

District I
1625 N. French Dr., Hobbs, NM 88240
Phone: (575) 393-6161 Fax: (575) 393-0720

District II
811 S. First St., Artesia, NM 88210
Phone: (575) 748-1283 Fax: (575) 748-9720

District III
1000 Rio Brazos Road, Aztec, NM 87410
Phone: (505) 334-6178 Fax: (505) 334-6170

District IV
1220 S. St. Francis Dr., Santa Fe, NM 87505
Phone: (505) 476-3460 Fax: (505) 476-3462

State of New Mexico

Form C-101
Revised July 18, 2013

Energy Minerals and Natural Resources

Oil Conservation Division

☐ AMENDED REPORT

1220 South St. Francis Dr.

Santa Fe, NM 87505

APPLICATION FOR PERMIT TO DRILL, RE-ENTER, DEEPEN, PLUGBACK, OR ADD A ZONE

¹ Operator Name and Address SCO Permian, LLC 4925 Greenville Ave, Suite 1030 Dallas, TX 75206		² OGRID Number 330782
		³ API Number 30-025-50227
⁴ Property Code 332910	⁵ Property Name Teague 16 State	⁶ Well No. 2

⁷ Surface Location

UL - Lot	Section	Township	Range	Lot Idn	Feet from	N/S Line	Feet From	E/W Line	County
K	16	23S	37E		2310	S	2310	W	Lea

⁸ Proposed Bottom Hole Location

UL - Lot	Section	Township	Range	Lot Idn	Feet from	N/S Line	Feet From	E/W Line	County
K	16	23S	37E		2310	S	2310	W	Lea

⁹ Pool Information

Pool Name Teague; Glorieta-Paddock, SW	Pool Code 58595
---	--------------------

Additional Well Information

¹¹ Work Type A	¹² Well Type O	¹³ Cable/Rotary R	¹⁴ Lease Type S	¹⁵ Ground Level Elevation 3305'
¹⁶ Multiple No	¹⁷ Proposed Depth 6100'	¹⁸ Formation Blaineby	¹⁹ Contractor Norton	²⁰ Spud Date August 16, 2022
Depth to Ground water 145' in CP 00423		Distance from nearest fresh water well 0.36 mi west of CP 00423		Distance to nearest surface water approx. 2 mi west of Rattlesnake Canyon

☒ We will be using a closed-loop system in lieu of lined pits²¹ Proposed Casing and Cement Program

Type	Hole Size	Casing Size	Casing Weight/ft	Setting Depth	Sacks of Cement	Estimated TOC
Surface	12.25"	9.625"	36# J-55	GL - 1,010'	331	GL
Production	7.875"	5.5"	17# L-80	GL - 6,100'	500	GL

Casing/Cement Program: Additional Comments

GL - 1000': fresh-water spud mud	1000' - TD: brine water
----------------------------------	-------------------------

²² Proposed Blowout Prevention Program

Type	Working Pressure	Test Pressure	Manufacturer
annular & double rams	5000	2500	Schaffer

²³ I hereby certify that the information given above is true and complete to the best of my knowledge and belief.

I further certify that I have complied with 19.15.14.9 (A) NMAC ☐ and/or 19.15.14.9 (B) NMAC ☐, if applicable.

Signature: *Cory Walk*

Printed name: Cory Walk

Title: Consultant

E-mail Address: cory@permitswest.com

Date: 02/02/23

Phone: 505-466-8120

OIL CONSERVATION DIVISION

Approved By:

P. Kautz

Title:

Approved Date: 02/14/2023

Expiration Date: 02/14/2025

Conditions of Approval Attached

District I
1625 N. French Dr., Hobbs, NM 88240
Phone: (575) 393-6161 Fax: (575) 393-0720
District II
811 S. First St., Artesia, NM 88210
Phone: (575) 748-1283 Fax: (575) 748-9720
District III
1000 Rio Brazos Road, Aztec, NM 87410
Phone: (505) 334-6178 Fax: (505) 334-6170
District IV
1220 S. St. Francis Dr., Santa Fe, NM 87505
Phone: (505) 476-3460 Fax: (505) 476-3462

State of New Mexico
Energy, Minerals & Natural Resources Department
OIL CONSERVATION DIVISION
1220 South St. Francis Dr.
Santa Fe, NM 87505

Form C-102
Revised August 1, 2011
Submit one copy to appropriate
District Office

☒ AMENDED REPORT
(Add a zone)

WELL LOCATION AND ACREAGE DEDICATION PLAT

¹ API Number 30-025-50227	² Pool Code 58595	³ Pool Name Teague; Glorieta-Paddock, SW
⁴ Property Code 332910	⁵ Property Name TEAGUE 16 STATE	⁶ Well Number 2
⁷ OGRID No. 330782	⁸ Operator Name SCO PERMIAN, LLC	⁹ Elevation 3305.8

¹⁰ Surface Location

UL or lot no.	Section	Township	Range	Lot Idn	Feet from the	North/South line	Feet from the	East/West line	County
K	16	23 S	37 E		2310	SOUTH	2310	WEST	LEA

¹¹ Bottom Hole Location If Different From Surface

UL or lot no.	Section	Township	Range	Lot Idn	Feet from the	North/South line	Feet from the	East/West line	County
¹² Dedicated Acres 40	¹³ Joint or Infill	¹⁴ Consolidation Code	¹⁵ Order No.						

No allowable will be assigned to this completion until all interests have been consolidated or a non-standard unit has been approved by the division.

<p>N89°26'10"E 2637.25 FT</p> <p>N89°31'23"E 2639.84 FT</p> <p>NW CORNER SEC. 16 LAT. = 32.3117202°N LONG. = 103.1764788°W NMSP EAST (FT) N = 479064.99 E = 898740.51</p> <p>N/4 CORNER SEC. 16 LAT. = 32.3117130°N LONG. = 103.1679443°W NMSP EAST (FT) N = 479090.94 E = 901377.37</p> <p>NE CORNER SEC. 16 LAT. = 32.3116943°N LONG. = 103.1594015°W NMSP EAST (FT) N = 479112.92 E = 904016.86</p> <p>W/4 CORNER SEC. 16 LAT. = 32.3044660°N LONG. = 103.1764737°W NMSP EAST (FT) N = 476425.80 E = 898770.59</p> <p>E/4 CORNER SEC. 16 LAT. = 32.3044394°N LONG. = 103.1593921°W NMSP EAST (FT) N = 476473.50 E = 904048.68</p> <p>SW CORNER SEC. 16 LAT. = 32.2972132°N LONG. = 103.1764690°W NMSP EAST (FT) N = 473787.13 E = 898800.52</p> <p>S/4 CORNER SEC. 16 LAT. = 32.2971995°N LONG. = 103.1679219°W NMSP EAST (FT) N = 473810.74 E = 901441.71</p> <p>SE CORNER SEC. 16 LAT. = 32.2971867°N LONG. = 103.1593763°W NMSP EAST (FT) N = 473834.88 E = 904082.44</p> <p>2310'</p> <p>TEAGUE 16 STATE 2 ELEV. = 3305.8' LAT. = 32.3035496°N (NAD83) LONG. = 103.1689982°W NMSP EAST (FT) N = 476117.42 E = 901084.03</p> <p>SURFACE LOCATION</p> <p>2310'</p> <p>S89°29'16"W 2641.55 FT</p> <p>S89°28'35"W 2641.10 FT</p> <p>N00°39'11"W 2639.62 FT</p> <p>N00°38'59"W 2639.10 FT</p> <p>S00°41'27"E 2639.87 FT</p> <p>S00°43'59"E 2639.09 FT</p>	<p>¹⁷ OPERATOR CERTIFICATION</p> <p>I hereby certify that the information contained herein is true and complete to the best of my knowledge and belief, and that this organization either owns a working interest or unleased mineral interest in the land including the proposed bottom hole location or has a right to drill this well at this location pursuant to a contract with an owner of such a mineral or working interest, or to a voluntary pooling agreement or a compulsory pooling order heretofore entered by the division.</p> <p><i>Cory Walk</i> 02-02-23 Signature Date</p> <p>Cory Walk Printed Name</p> <p>cory@permitswest.com E-mail Address</p> <p>¹⁸ SURVEYOR CERTIFICATION</p> <p>I hereby certify that the well location shown on this plat was plotted from field notes of actual surveys made by me or under my supervision, and that the same is true and correct to the best of my belief.</p> <p>JUNE 16, 2022 Date of Survey</p> <p><i>ALIMON F. JARAMILLO</i> Signature and Seal of Professional Surveyor: (12797)</p> <p>Certificate Number: 12797 SURV. NO. 9425A</p>
---	--

State of New Mexico
Energy, Minerals and Natural Resources Department

Submit Electronically
Via E-permitting

Oil Conservation Division
1220 South St. Francis Dr.
Santa Fe, NM 87505

NATURAL GAS MANAGEMENT PLAN

This Natural Gas Management Plan must be submitted with each Application for Permit to Drill (APD) for a new or recompleted well.

Section 1 – Plan Description

Effective May 25, 2021

I. Operator: SCO Permian, LLC **OGRID:** 3307892 **Date:** 02 / 02 / 2023

II. Type: ☐ Original ☐ Amendment due to ☐ 19.15.27.9.D(6)(a) NMAC ☐ 19.15.27.9.D(6)(b) NMAC ☒ Other.

If Other, please describe: Change pool

III. Well(s): Provide the following information for each new or recompleted well or set of wells proposed to be drilled or proposed to be recompleted from a single well pad or connected to a central delivery point.

Well Name	API	ULSTR	Footages	Anticipated Oil BBL/D	Anticipated Gas MCF/D	Anticipated Produced Water BBL/D
Teague 16 State 2	30-025- 50227	K-16-23s-37e	2310 FSL & 2310 FWL	150	175	20

IV. Central Delivery Point Name: Targa Midstream Services LLC (24650) [See 19.15.27.9(D)(1) NMAC]
P-16-23s-37e

V. Anticipated Schedule: Provide the following information for each new or recompleted well or set of wells proposed to be drilled or proposed to be recompleted from a single well pad or connected to a central delivery point.

Well Name	API	Spud Date	TD Reached Date	Completion Commencement Date	Initial Flow Back Date	First Production Date
Teague 16 State 2	30-025-50227	8-22-22	9-1-22	9-10-22	9-15-22	9-20-22

VI. Separation Equipment: ☒ Attach a complete description of how Operator will size separation equipment to optimize gas capture.

VII. Operational Practices: ☒ Attach a complete description of the actions Operator will take to comply with the requirements of Subsection A through F of 19.15.27.8 NMAC.

VIII. Best Management Practices: ☒ Attach a complete description of Operator's best management practices to minimize venting during active and planned maintenance.

Section 2 – Enhanced Plan

EFFECTIVE APRIL 1, 2022

Beginning April 1, 2022, an operator that is not in compliance with its statewide natural gas capture requirement for the applicable reporting area must complete this section.

☒ Operator certifies that it is not required to complete this section because Operator is in compliance with its statewide natural gas capture requirement for the applicable reporting area.

IX. Anticipated Natural Gas Production:

Well	API	Anticipated Average Natural Gas Rate MCF/D	Anticipated Volume of Natural Gas for the First Year MCF

X. Natural Gas Gathering System (NGGS):

Operator	System	ULSTR of Tie-in	Anticipated Gathering Start Date	Available Maximum Daily Capacity of System Segment Tie-in

XI. Map. ☐ Attach an accurate and legible map depicting the location of the well(s), the anticipated pipeline route(s) connecting the production operations to the existing or planned interconnect of the natural gas gathering system(s), and the maximum daily capacity of the segment or portion of the natural gas gathering system(s) to which the well(s) will be connected.

XII. Line Capacity. The natural gas gathering system ☐ will ☐ will not have capacity to gather 100% of the anticipated natural gas production volume from the well prior to the date of first production.

XIII. Line Pressure. Operator ☐ does ☐ does not anticipate that its existing well(s) connected to the same segment, or portion, of the natural gas gathering system(s) described above will continue to meet anticipated increases in line pressure caused by the new well(s).

☐ Attach Operator's plan to manage production in response to the increased line pressure.

XIV. Confidentiality: ☐ Operator asserts confidentiality pursuant to Section 71-2-8 NMSA 1978 for the information provided in Section 2 as provided in Paragraph (2) of Subsection D of 19.15.27.9 NMAC, and attaches a full description of the specific information for which confidentiality is asserted and the basis for such assertion.

Section 3 - Certifications

Effective May 25, 2021

Operator certifies that, after reasonable inquiry and based on the available information at the time of submittal:

☒ Operator will be able to connect the well(s) to a natural gas gathering system in the general area with sufficient capacity to transport one hundred percent of the anticipated volume of natural gas produced from the well(s) commencing on the date of first production, taking into account the current and anticipated volumes of produced natural gas from other wells connected to the pipeline gathering system; or

☐ Operator will not be able to connect to a natural gas gathering system in the general area with sufficient capacity to transport one hundred percent of the anticipated volume of natural gas produced from the well(s) commencing on the date of first production, taking into account the current and anticipated volumes of produced natural gas from other wells connected to the pipeline gathering system.

If Operator checks this box, Operator will select one of the following:

Well Shut-In. ☐ Operator will shut-in and not produce the well until it submits the certification required by Paragraph (4) of Subsection D of 19.15.27.9 NMAC; or

Venting and Flaring Plan. ☐ Operator has attached a venting and flaring plan that evaluates and selects one or more of the potential alternative beneficial uses for the natural gas until a natural gas gathering system is available, including:

- (a) power generation on lease;
- (b) power generation for grid;
- (c) compression on lease;
- (d) liquids removal on lease;
- (e) reinjection for underground storage;
- (f) reinjection for temporary storage;
- (g) reinjection for enhanced oil recovery;
- (h) fuel cell production; and
- (i) other alternative beneficial uses approved by the division.

Section 4 - Notices

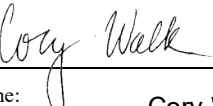
1. If, at any time after Operator submits this Natural Gas Management Plan and before the well is spud:

(a) Operator becomes aware that the natural gas gathering system it planned to connect the well(s) to has become unavailable or will not have capacity to transport one hundred percent of the production from the well(s), no later than 20 days after becoming aware of such information, Operator shall submit for OCD's approval a new or revised venting and flaring plan containing the information specified in Paragraph (5) of Subsection D of 19.15.27.9 NMAC; or

(b) Operator becomes aware that it has, cumulatively for the year, become out of compliance with its baseline natural gas capture rate or natural gas capture requirement, no later than 20 days after becoming aware of such information, Operator shall submit for OCD's approval a new or revised Natural Gas Management Plan for each well it plans to spud during the next 90 days containing the information specified in Paragraph (2) of Subsection D of 19.15.27.9 NMAC, and shall file an update for each Natural Gas Management Plan until Operator is back in compliance with its baseline natural gas capture rate or natural gas capture requirement.

2. OCD may deny or conditionally approve an APD if Operator does not make a certification, fails to submit an adequate venting and flaring plan which includes alternative beneficial uses for the anticipated volume of natural gas produced, or if OCD determines that Operator will not have adequate natural gas takeaway capacity at the time a well will be spud.

I certify that, after reasonable inquiry, the statements in and attached to this Natural Gas Management Plan are true and correct to the best of my knowledge and acknowledge that a false statement may be subject to civil and criminal penalties under the Oil and Gas Act.

Signature:	
Printed Name:	Cory Walk
Title:	Consultant
E-mail Address:	cory@permitswest.com
Date:	02-02-2023
Phone:	505 466-8120

OIL CONSERVATION DIVISION
(Only applicable when submitted as a standalone form)

Approved By:
Title:
Approval Date:
Conditions of Approval:

VI. SEPARATION EQUIPMENT

SCO Permian, LLC tentatively plans to install a 4' x 20' heater-treater based on estimated volumes. Associated equipment will include:

- fuel safety shut-off valve
- gas scrubber
- oil tanks (two 500 bbl)
- separator (3-phase)
- vapor recovery tower
- vapor recovery piping for all tanks
- water tank (one 500 bbl)

VII. Operational Practices

NMAC 19.15.27.8 (A) Venting & Flaring of Natural Gas

1. SCO Permian, LLC will comply NMAC 19.15.27.8 – venting and flaring of gas during drilling, completion, or production that constitutes waste as defined in 19.15.2 is banned.

NMAC 19.15.27.8 (B) Venting & Flaring During Drilling

1. SCO will capture or combust gas if technically feasible during drilling operations using best industry practices.
2. A flare stack with a 100% capacity for expected volume will be set on the pad ≥ 100 feet from the nearest well head and storage tank.
3. In an emergency, SCO will vent gas in order to avoid substantial impact. SCO will report vented or flared gas to the NMOCD.

NMAC 19.15.27.8 (C) Venting & Flaring During Completion or Recompletion

1. Facilities will be built and ready from the first day of flowback
2. Test separator will be properly separate gas and liquids. Temporary test separator will be used initially to process volumes. In addition, separator will be tied into flowback tanks which will be tied into the gas processing equipment for sale down a pipeline.
3. Should the facility not be ready to process gas, or the gas does not meet quality standards, then storage tanks will be set that are tied into gas busters or a temporary flare to manage all gas. This flare would meet the following requirements:
 - a) An appropriate sized flare stack with an automatic igniter
 - b) SCO analyzes gas samples twice a week
 - c) SCO flows the gas into a gathering line as soon as the pipeline specifications are met
 - d) SCO provides the NMOCD with pipeline specifications and natural gas data.

NMAC 19.15.27.8 (D) Venting & Flaring During Production

SCO will not vent or flare natural gas except:

1. During an emergency or malfunction
2. To unload or clean-up liquid holdup in a well to atmospheric pressure, provided
 - a) SCO does not vent after the well achieves a stabilized rate and pressure
 - b) SCO will be on-site while unloading liquids by manual purging and take all reasonable actions to achieve a stabilized rate and pressure as soon as possible

- c) SCO will optimize the system to minimize gas venting if the well is equipped with a plunger lift or auto control system
 - d) Best management practices will be used during downhole well maintenance.
- 3. During the first year of production from an exploratory well provided
 - a) SCO receives approval from the NMOCD
 - b) SCO stays in compliance with NMOCD gas capture requirements
 - c) SCO submits an updated C-129 form to the NMOCD
- 4. During the following activities unless prohibited
 - a) Gauging or sampling a storage tank or low-pressure production vessel
 - b) Loading out liquids from a storage tank
 - c) Repair and maintenance
 - d) Normal operation of a gas-activated pneumatic controller or pump
 - e) Normal operation of a storage tank but not including venting from a thief hatch
 - f) Normal operation of dehydration units
 - g) Normal operations of compressors, engines, turbines, valves, flanges, & connectors
 - h) During a Braden head, packer leak test, or production test lasting <24 hours
 - i) When natural gas does not meet the gathering line specifications
 - j) Commissioning of lines, equipment, or facilities only for as long as necessary to purge introduced impurities.

NMAC 19.15.27.8 (E) Performance Standards

- 1. SCO used a safety factor to design the separation and storage equipment. The equipment will be routed to a vapor recovery system and uses a flare as back up for startup, shutdown, maintenance, or malfunction of the VRU system.
- 2. SCO will install a flare that will handle the full facility vapor volume in case the VRU fails. It will have an auto-ignition system.
- 3. Flare stacks will be appropriately sized and designed to ensure proper combustion efficiency
 - a) Flare stacks installed or replaced will be equipped with an automatic ignitor or continuous pilot.
 - b) Previously installed flare stacks will be retrofitted within 18 months of May 25, 2021 with an automatic ignitor, continuous pilot, or technology that alerts SCO to flare malfunction.
 - c) Flare stacks replaced after May 25, 2021 will be equipped with an automatic ignitor or continuous pilot if at a well or facility with an average production of ≤ 60 Mcfd of natural gas.
 - d) Flare stacks will be located >100 feet from well head and storage tanks and securely anchored.
- 4. SCO will conduct an audio/visual/olfactory inspection on all components for leaks and defects every week.

5. SCO will make and keep records of AVO inspections available to the NMOCD for at least 5 years.
6. SCO may use a remote or automated monitoring technology to detect leaks and releases in lieu of AVO inspections with prior NMOCD approval.
7. Facilities will be designed to minimize waste.
8. SCO will resolve emergencies as promptly as possible.

NMAC 19.15.27.8 (F) Measuring or Estimating Vented & Flared Natural Gas

1. SCO will have meters on both the low pressure and high-pressure sides of the flares. Volumes will be recorded in the SCADA system.
2. SCO will install equipment to measure the volume of flared natural gas that has an average production of ≥ 60 Mcfd.
3. SCO's measuring equipment will conform to industry standards.
4. Measurement system will be designed such that it cannot be bypassed except for inspections and servicing the meters.
5. SCO will estimate the volume of vented or flared gas using a methodology that can be independently verified if metering is not practicable due to low flow rate or pressure.
6. SCO will estimate the volume of vented and flared gas based on the results of an annual GOR test for wells that do not require measuring equipment reported on form C-116.
7. SCO will install measuring equipment whenever the NMOCD determines that metering is necessary.

VIII. Best Management Practices

SCO Permian LLC will minimize venting during maintenance by:

1. Designing and operating system to route storage tank and process equipment emissions to the VRU. If the VRU is not operable, then vapors will be routed to the flare.
2. Scheduling maintenance for multiple tasks to minimize the need for blowdowns.
3. After completion of maintenance, gas will be flared until it meets pipeline specifications.

Operator:

SCO PERMIAN, LLC

Well Name: TEAGUE 16 STATE 002

API: 30-025-50227

Formation: PADDOCK-BLINEBRY Formation

County, State: Lea, NM

Field: PADDOCK-BLINEBRY

SH Location: 2310' FSL & 2310' FWL of Section 16 T23S R37E

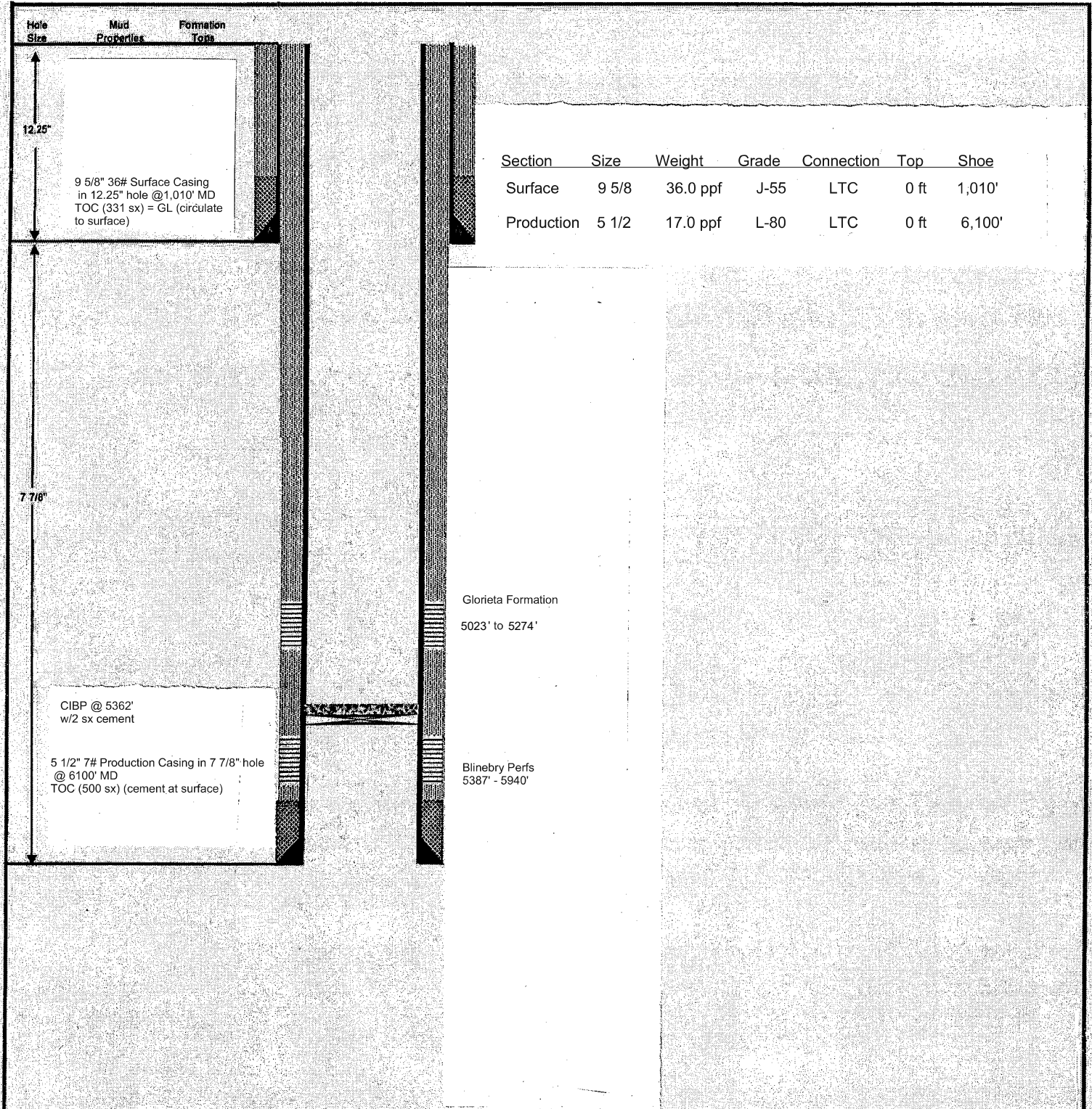
BH Location: 2310' FSL & 2310' FWL of Section 16 T23S R37E

Surface Latitude: 32.3035496

Surface Longitude: -103.1689982

KB Elevation: 3,317.0'

Ground Elevation: 3,305.0'



TEAGUE 16 No. 2

INSTRUCTIONS

This form is to be filed with the appropriate District Office of the Division not later than 20 days after the completion of any newly-drilled or deepened well and not later than 60 days after completion of closure. When submitted as a completion report, this shall be accompanied by one copy of all electrical and radio-activity logs run on the well and a summary of all special tests conducted, including drill stem tests. All depths reported shall be measured depths. In the case of directionally drilled wells, true vertical depths shall also be reported. For multiple completions, items 11, 12 and 26-31 shall be reported for each zone.

INDICATE FORMATION TOPS IN CONFORMANCE WITH GEOGRAPHICAL SECTION OF STATE

Southeastern New Mexico		Northwestern New Mexico	
T. Anhy	1050'	T. Canyon	T. Ojo Alamo
T. Salt		T. Strawn	T. Kirtland
B. Salt		T. Atoka	T. Fruitland
T. Yates	2620'	T. Miss	T. Pictured Cliffs
T. 7 Rivers	2830'	T. Devonian	T. Cliff House
T. Queen	3364'	T. Silurian	T. Menefee
T. Grayburg	3598'	T. Montoya	T. Point Lookout
T. San Andres	3864'	T. Simpson	T. Mancos
T. Glorieta	4982'	T. McKee	T. Gallup
T. Paddock		T. Ellenburger	Base Greenhorn
T. Blinbry	5347'	T. Gr. Wash	T. Dakota
T. Tubb	6028'	T. Delaware Sand	T. Morrison
T. Drinkard		T. Bone Springs	T. Todilto
T. Abo		T. QUEEN PAY 3480'	T. Entrada
T. Wolfcamp		T.	T. Wingate
T. Penn		T.	T. Chinle
T. Cisco (Bough C)		T.	T. Permian

OIL OR GAS
SANDS OR ZONES

No. 1, from 3364' to 3598' No. 3, from 4982' to 5347'
 No. 2, from 3864' to 4982' No. 4, from 5347' to 6028'

IMPORTANT WATER SANDS

Include data on rate of water inflow and elevation to which water rose in hole.

No. 1, from.....to.....feet.....
 No. 2, from.....to.....feet.....
 No. 3, from.....to.....feet.....

LITHOLOGY RECORD (Attach additional sheet if necessary)

From	To	Thickness In Feet	Lithology	From	To	Thickness In Feet	Lithology
1050	2620	1570	ANHYDRITE				
2620	2830	210	SANDSTONE & DOLOMITE				
2830	3364	534	DOLOMITE & SANDSTONE				
3364	3598	234	SANDSTONE & DOLOMITE				
3598	3864	266	DOLOMITE & SANDSTONE				
3864	4982	1118	DOLOMITE				
4982	5347	365	DOLOMITE & SANDSTONE				
5347	6028	681	DOLOMITE & SANDSTONE				
6028	6100	72	DOLOMITE & SANDSTONE				

District I
1625 N. French Dr., Hobbs, NM 88240
Phone:(575) 393-6161 Fax:(575) 393-0720
District II
811 S. First St., Artesia, NM 88210
Phone:(575) 748-1283 Fax:(575) 748-9720
District III
1000 Rio Brazos Rd., Aztec, NM 87410
Phone:(505) 334-6178 Fax:(505) 334-6170
District IV
1220 S. St Francis Dr., Santa Fe, NM 87505
Phone:(505) 476-3470 Fax:(505) 476-3462

State of New Mexico
Energy, Minerals and Natural Resources
Oil Conservation Division
1220 S. St Francis Dr.
Santa Fe, NM 87505

CONDITIONS

Action 182224

CONDITIONS

Operator: SCO PERMIAN, LLC 5728 NW 132nd Street Oklahoma City, OK 73142	OGRID: 330782
	Action Number: 182224
	Action Type: [C-101] Drilling Non-Federal/Indian (APD)

CONDITIONS

Created By	Condition	Condition Date
pkautz	None	2/14/2023