

Office
District I - (575) 393-6161
1625 N. French Dr., Hobbs, NM 88240
District II - (575) 748-1283
811 S. First St., Artesia, NM 88210
District III - (505) 334-6178
1000 Rio Brazos Rd., Aztec, NM 87410
District IV - (505) 476-3460
1220 S. St. Francis Dr., Santa Fe, NM
87505

State of New Mexico
Energy, Minerals and Natural Resources

Form C-103
Revised July 18, 2013

OIL CONSERVATION DIVISION
1220 South St. Francis Dr.
Santa Fe, NM 87505

WELL API NO. 30-025-02709
5. Indicate Type of Lease STATE <input checked="" type="checkbox"/> FEE
6. State Oil & Gas Lease No.
7. Lease Name or Unit Agreement State B
8. Well Number 4
9. OGRID Number 328992
10. Pool name or Wildcat Towsend-Wolfcamp
11. Elevation (Show whether DR, RKB, RT, GR, etc.) 3973.7

SUNDRY NOTICES AND REPORTS ON WELLS
(DO NOT USE THIS FORM FOR PROPOSALS TO DRILL OR TO DEEPEN OR PLUG BACK TO A DIFFERENT RESERVOIR. USE "APPLICATION FOR PERMIT" (FORM C-101) FOR SUCH PROPOSALS.)

1. Type of Well: Oil Well ☒ Gas Well ☐ Other ☐

2. Name of Operator
Sabinal Energy Operating, LLC

3. Address of Operator
1780 Hughes Landing Blvd Ste 1200, The Woodlands, TX 77380

4. Well Location
Unit Letter J :4610 feet from the South line and 2301 feet from the East line
Section 1 Township 16S Range 35E NMPM County: Lea, NM

12. Check Appropriate Box to Indicate Nature of Notice, Report or Other Data

NOTICE OF INTENTION TO:

PERFORM REMEDIAL WORK ☐ PLUG AND ABANDON ☐
TEMPORARILY ABANDON ☐ CHANGE PLANS ☐
PULL OR ALTER CASING ☐ MULTIPLE COMPL ☐
DOWNHOLE COMMINGLE ☐
CLOSED-LOOP SYSTEM ☐
OTHER: ☐

SUBSEQUENT REPORT OF:

REMEDIAL WORK ☐ ALTERING CASING ☐
COMMENCE DRILLING OPNS. ☐ P AND A ☒
CASING/CEMENT JOB ☐

PNR

OTHER: Devon Company Rep Notified 10/7/21
☐

13. Describe proposed or completed operations. (Clearly state all pertinent details, and give pertinent dates, including estimated date of starting any proposed work). SEE RULE 19.15.7.14 NMAC. For Multiple Completions: Attach wellbore diagram of proposed completion or recompletion.

10,500'-10,354' (25 sxs) Tag

9700'-9465' (25 sxs) Tag

6300'-6028' (25 sxs) Tag

5900'-4900' (25 sxs) Tag

4750'-4442' (50 sxs) P&S-Tag

3930'-3807' (25 sxs) Tag

3230'-3103' (25 sxs) Tag

1600'-1483' (25 sxs) Tag

1000'-900' (25 sxs) Tag

513'-0' (55 sxs) P&S-Circulate to Surf

NOTE: GOT OK FROM KERRY NMOCD TO LOWER TBG TAIL 10500' PUMP 40 SXS AND TAG THEN TAIL AT 9700' 25 SXS AND TAG, CHANGE OVER TO MUD THERE AND PRESSURE UP CASING THEN TAIL AT 7500' 25 SXS.

Spud Date:

I hereby certify that the information above is true and complete to the best of my knowledge and belief.

DocuSigned by:

SIGNATURE Jeffery Buford TITLE Manager DATE 5/5/22

642A4792E6AD4EF...

Type or print name Jeffery Buford E-mail address: Jeffery.buford@axisofs.com PHONE: 432-770-7200

For State Use Only:

APPROVED BY: Kerry Fortner TITLE Compliance Officer A DATE 3/8/23

Conditions of Approval (if any):

STATE B 4 Wellbore Diagram

Created: 03/03/22 By: N. Sirgo
 Updated: By:
 Lease:
 Surf. Loc.: 4610' FSL & 2301' FEL
 Surf. Loc.: SEC 1, T-16-S, R-35-E
 Bot. Loc.:
 County: Lea St.: New Mexico
 Status: Shut In

Well #: B4 Fd./St. #:
 API 30-025-02709
 Surface Survey:
 Labor: League:
 Bottom hole Survey:
 Labor: League:
 Cost Code:

Surface Casing

Size: 13-3/8
 Wt., Grd.: 48# H-40
 Depth: 357
 Sxs Cmt: 275
 Circulate: Yes
 TOC: Surf
 Hole Size: 17-1/2

Production Casing

Size: 8-5/8
 Wt., Grd.: 36# J-55
 Depth: 4,703
 Sxs Cmt: 2,050
 Circulate: Yes
 TOC: Surf
 Hole Size: 11
 DV Tool: N/A

Liner

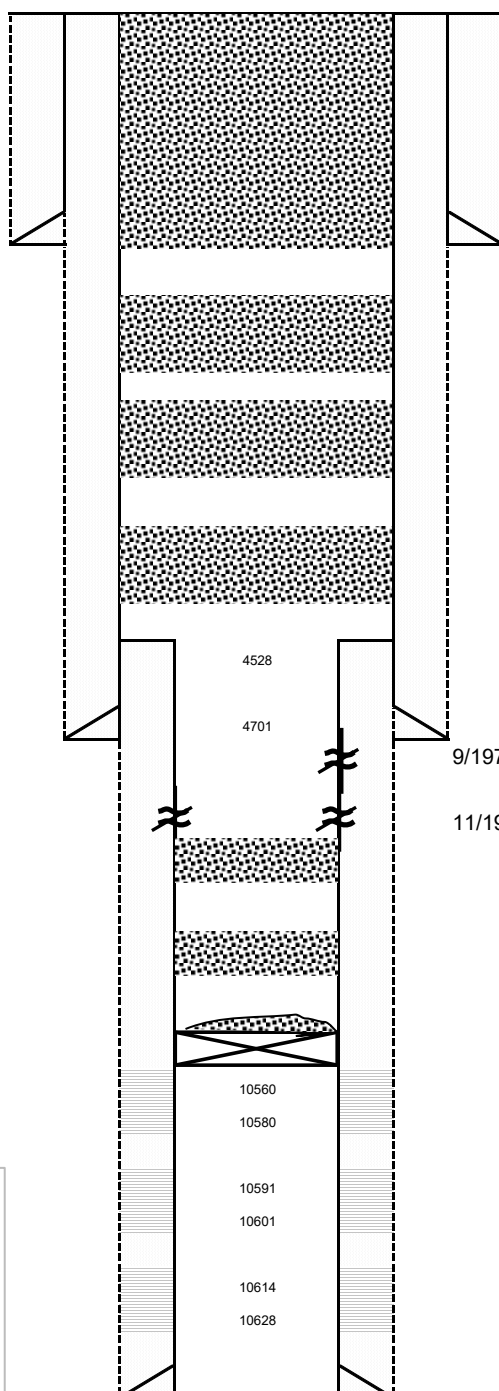
Size: 5-1/2
 Wt., Grd.: 17# N-80
 Top Liner: 4,528
 Bot Liner: 10,703
 Sxs Cmt: 200
 Circulate:
 TOC:
 Hole Size: 7-3/4
 DV Tool: N/A

Perforations

4 spf @ 10,560-80, 10,591-10,601,
 14-28 (176 holes)

History

11/1970 Csg leak: sqz'd csg leak at 5509-69
 1972 TA'd
 9/1979 Csg leak: sqz'd csg leaks at TOL @ 4728 then 5160, 5214, 5247, 6077, 6119, 6264 with total of 635 sxs cmt, bent csg at 9656, ran swedge thru bad



KB: 11
 DF:
 GL:
 Ini. Spud: 04/03/57
 Ini. Comp.: 06/04/57

Plug #6 @ 513 to surface

Plug #5 @ 900' with 25 sx cmt

Plug #4 @ 1600' with 25 sx cmt

Plug #3 @ 3230' with 25 sx cmt

9/1979 Sqz'd csg leaks at 4728, 5160, 5214, 5247,

11/1970 Sqz'd csg leak at 5509-69

Plug #2 @ 5900' with 25 sx cmt

Plug #1 @ 9000' with 25 sxs cmt

CIBP @ 10,500 with cmt on top

PBTD: 10,665
 TD: 10,703

District I
1625 N. French Dr., Hobbs, NM 88240
Phone:(575) 393-6161 Fax:(575) 393-0720
District II
811 S. First St., Artesia, NM 88210
Phone:(575) 748-1283 Fax:(575) 748-9720
District III
1000 Rio Brazos Rd., Aztec, NM 87410
Phone:(505) 334-6178 Fax:(505) 334-6170
District IV
1220 S. St Francis Dr., Santa Fe, NM 87505
Phone:(505) 476-3470 Fax:(505) 476-3462

State of New Mexico
Energy, Minerals and Natural Resources
Oil Conservation Division
1220 S. St Francis Dr.
Santa Fe, NM 87505

COMMENTS

Action 189334

COMMENTS

Operator: Sabinal Energy Operating, LLC 1780 HUGHES LANDING BLVD, STE THE WOODLANDS, TX 77380	OGRID: 328992
	Action Number: 189334
	Action Type: [C-103] Sub. Plugging (C-103P)

COMMENTS

Created By	Comment	Comment Date
plmartinez	DATA ENTRY PM.	3/9/2023

District I
1625 N. French Dr., Hobbs, NM 88240
Phone:(575) 393-6161 Fax:(575) 393-0720
District II
811 S. First St., Artesia, NM 88210
Phone:(575) 748-1283 Fax:(575) 748-9720
District III
1000 Rio Brazos Rd., Aztec, NM 87410
Phone:(505) 334-6178 Fax:(505) 334-6170
District IV
1220 S. St Francis Dr., Santa Fe, NM 87505
Phone:(505) 476-3470 Fax:(505) 476-3462

State of New Mexico
Energy, Minerals and Natural Resources
Oil Conservation Division
1220 S. St Francis Dr.
Santa Fe, NM 87505

CONDITIONS

Action 189334

CONDITIONS

Operator: Sabinal Energy Operating, LLC 1780 HUGHES LANDING BLVD, STE THE WOODLANDS, TX 77380	OGRID: 328992
	Action Number: 189334
	Action Type: [C-103] Sub. Plugging (C-103P)

CONDITIONS

Created By	Condition	Condition Date
kfortner	Need C103Q and marker photo to release	3/8/2023