

Submit One Copy To Appropriate District
Office

District I

1625 N. French Dr., Hobbs, NM 88240

District II

811 S. First St., Artesia, NM 88210

District III

1000 Rio Brazos Rd., Aztec, NM 87410

District IV

1220 S. St. Francis Dr., Santa Fe, NM

87505

State of New Mexico
Energy, Minerals and Natural Resources

OIL CONSERVATION DIVISION

1220 South St. Francis Dr.

Santa Fe, NM 87505

Form C-103

Revised November 3, 2011

WELL API NO. 30-005-60995	
5. Indicate Type of Lease STATE <input checked="" type="checkbox"/> FEE <input type="checkbox"/>	
6. State Oil & Gas Lease No.	
7. Lease Name or Unit Agreement Name Twin Lakes San Andres Unit	
8. Well Number 078	
9. OGRID Number 300825	
10. Pool name or Wildcat Cato; San Andres	
SUNDRY NOTICES AND REPORTS ON WELLS (DO NOT USE THIS FORM FOR PROPOSALS TO DRILL OR TO DEEPEN OR PLUG BACK TO A DIFFERENT RESERVOIR. USE "APPLICATION FOR PERMIT" (FORM C-101) FOR SUCH PROPOSALS.)	
1. Type of Well: <input checked="" type="checkbox"/> Oil Well <input type="checkbox"/> Gas Well <input type="checkbox"/> Other	
2. Name of Operator Blue Sky NM Inc.	
3. Address of Operator 7941 Katy Freeway Suite 522 Houston, TX 77024	
4. Well Location Unit Letter <u>K</u> : <u>2310</u> feet from the <u>S</u> line and <u>1650</u> feet from the <u>W</u> line Section <u>6</u> Township <u>09S</u> Range <u>29E</u> NMPM <u> </u> County <u>Chaves</u>	
11. Elevation (Show whether DR, RKB, RT, GR, etc.)	
12. Check Appropriate Box to Indicate Nature of Notice, Report or Other Data	
NOTICE OF INTENTION TO: PERFORM REMEDIAL WORK <input type="checkbox"/> PLUG AND ABANDON <input type="checkbox"/> TEMPORARILY ABANDON <input type="checkbox"/> CHANGE PLANS <input type="checkbox"/> PULL OR ALTER CASING <input type="checkbox"/> MULTIPLE COMPL <input type="checkbox"/>	SUBSEQUENT REPORT OF: REMEDIAL WORK <input type="checkbox"/> ALTERING CASING <input type="checkbox"/> COMMENCE DRILLING OPNS. <input type="checkbox"/> P AND A <input checked="" type="checkbox"/> CASING/CEMENT JOB <input type="checkbox"/>
OTHER: <input type="checkbox"/> <input checked="" type="checkbox"/> Location is ready for OCD inspection after P&A	
<input checked="" type="checkbox"/> All pits have been remediated in compliance with OCD rules and the terms of the Operator's pit permit and closure plan.	
<input checked="" type="checkbox"/> Rat hole and cellar have been filled and leveled. Cathodic protection holes have been properly abandoned.	
<input checked="" type="checkbox"/> A steel marker at least 4" in diameter and at least 4' above ground level has been set in concrete. It shows the	

OPERATOR NAME, LEASE NAME, WELL NUMBER, API NUMBER, QUARTER/QUARTER LOCATION OR UNIT LETTER, SECTION, TOWNSHIP, AND RANGE. ALL INFORMATION HAS BEEN WELDED OR PERMANENTLY STAMPED ON THE MARKER'S SURFACE.

- ☐ The location has been leveled as nearly as possible to original ground contour and has been cleared of all junk, trash, flow lines and other production equipment.
- ☐ Anchors, dead men, tie downs and risers have been cut off at least two feet below ground level.
- ☐ If this is a one-well lease or last remaining well on lease, the battery and pit location(s) have been remediated in compliance with OCD rules and the terms of the Operator's pit permit and closure plan. All flow lines, production equipment and junk have been removed from lease and well location.
- ☐ All metal bolts and other materials have been removed. Portable bases have been removed. (Poured onsite concrete bases do not have to be removed.)
- ☐ All other environmental concerns have been addressed as per OCD rules.
- ☐ Pipelines and flow lines have been abandoned in accordance with 19.15.35.10 NMAC. All fluids have been removed from non-retrieved flow lines and pipelines.
- ☐ If this is a one-well lease or last remaining well on lease: all electrical service poles and lines have been removed from lease and well location, except for utility's distribution infrastructure.

When all work has been completed, return this form to the appropriate District office to schedule an inspection.

SIGNATURE _____ TITLE Authorized Representative DATE 1/23/22

TYPE OR PRINT NAME Drake McCulloch E-MAIL: drake@dwsrigs.com PHONE (505) 320-1180

For State Use Only

APPROVED BY:  TITLE Petroleum Specialist DATE 04/17/23

Blue Sky NM, INC.

Plug And Abandonment End Of Well Report

Twin Lakes San Andres Unit #078

2310' FSL & 1650' FWL, Section 6, 09S, 29E

Chaves County, NM / API 30-005-60995

Work Summary:

- 1/5/23** Made BLM and NMOCD P&A operations notifications at 9:00 AM MST.
- 1/6/23** Arrived on location and held safety meeting. Fixed road onto location. R/U P&A rig. Checked well pressures: Tubing 0 psi, Casing: 0 psi, Bradenhead: 0 psi. Bled down well. N/D wellhead. N/U BOP and function tested. Began pulling Tubing. Secured and shut in well for the day.
- 1/7/23** Arrived on location and held safety meeting. Checked well pressures: Tubing 0 psi, Casing: 0 psi, Bradenhead: 0 psi. Bled down well. TOOH with tubing and tubing anchor. P/U 4.5" casing scraper. Round trip to 2669'. L/D scraper. P/U 4.5" CR. TIH to 2619' and set CR. Attempted to pressure test casing but was unsuccessful. R/U cementing services. Pumped plug #1 from 2619' to 1943' with 58 sx. TOOH. WOC overnight. Secured and shut in well for the day.
- 1/8/23** Arrived on location and held safety meeting. Checked well pressures: Tubing 0 psi, Casing: 0 psi, Bradenhead: 0 psi. Bled down well. R/U wireline services. RIH and tagged at 1943'. Ran CBL. R/D wireline services. Attempted to pressure test but was unsuccessful. TIH with tubing. Pumped salt gel from 1943' to 1540'. TOOH. R/U wireline services. RIH and perforated at 1165'. POOH. P/U 4.5" packer. TIH and set at 1058'. R/U cementing services. Pumped plug #2 from 1540' to 1165' to cover the Queen formation top. Plug #2 consisted of 108 sx, 29 sx in 4.5" casing and 79 sx in annulus. TOOH. WOC overnight. Secured and shut in well for the day.

- 1/9/23** Arrived on location and held safety meeting. Checked well pressures: Tubing 0 psi, Casing: 0 psi, Bradenhead: 0 psi. Bled down well. TIH and tagged top of plug #2 at 900'. R/U wireline services. Attempted to RIH but could not get to bottom. POOH. P/U 4.5" casing scraper. Round tripped with scraper to 800'. R/U wireline services. RIH and perforated at 822'. POOH. TIH with tubing and pumped salt gel spacer. TOOH. P/U 4.5" packer. TIH and set packer at 358'. Successfully established an injection rate. TOOH and L/D packer. TIH. R/U cementing services. Pumped plug #3 from 869' to 447' to cover the Yates formation top. Plug #3 consisted of 33 sx. TOOH. WOC 4 hours. TIH and tagged top of plug #3 at 580'. Attempted to pressure test but was unsuccessful. R/U cementing services. Continued pumping plug #3 from 580' to 400' with 14 sx. TOOH. R/U wireline services. RIH and perforated at 172'. POOH. Secured and shut in well for the day.
- 1/10/23** Arrived on location and held safety meeting. Checked well pressures: Tubing 0 psi, Casing: 0 psi, Bradenhead: 0 psi. Bled down well. TIH and tagged the top of plug #3 at 326'. TOOH. P/U 4.5" packer. TIH and set packer at 161'. Attempted to pressure tested above packer but test failed. TOOH. P/U 4.5" retainer. TIH and set at 161'. Established circulation through BH valve. R/U cementing services. Began pumping into retainer and cement locked up. Pump pressured up to 5,000 PSI. Stung out of retainer. Reverse circulated hole clean. Wait on wireline unit. Secured and shut in well for the day.
- 1/11/23** Arrived on location and held safety meeting. Checked well pressures: Tubing 0 psi, Casing: 0 psi, Bradenhead: 0 psi. Bled down well. Attempted to pressure test casing but was unsuccessful. R/U wireline services. RIH and perforated at 150'. POOH. P/U 4.5" packer. TIH and set packer at 128'. Successfully established injection rate through packer, into perforations and out BH valve. Attempted to pressure test casing above packer but was unsuccessful. Unset packer and TOOH. P/U 4.5" CR. TIH with 4.5" CR and set at 134'. R/U cementing services. Pumped plug #4 through CR, into perforations and out BH valve at surface, stung out of CR and pumped cement to surface in 4.5" casing. L/D tubing, R/D floor, N/D BOP, N/U wellhead. R/D unit and all equipment. MOL.
- 1/19/23** Arrived on location and held safety meeting. Used backhoe to safely expose wellhead. R/U water jet wellhead cutter. Performed water jet cutoff. Removed old wellhead. Tagged cement at 51' in 4.5" casing, and 32' in 8.6" Casing. R/U cementing services and filled both casing strings to surface with 10 sx (6 sx in 8.6", 4 sx in 4.5"). Welder attached marker per NMOC regulations.

Plug Summary:**Plug #1: (San Andres Perforations and Formation Top, 2,619'-1,943', 58 Sacks Type I/II Cement)**

P/U 4.5" casing scraper. Round trip to 2669'. L/D scraper. P/U 4.5" CR. TIH to 2619' and set CR. Attempted to pressure test casing but was unsuccessful. R/U cementing services. Pumped plug #1 from 2619' to 1943' with 58 sx. TOOH. WOC overnight. R/U wireline services. RIH and tagged at 1943'.

Plug #2: (Queen Formation Top 1,540-900', 108 Sacks Type I/II Cement)

R/U wireline services. RIH and perforated at 1165'. POOH. P/U 4.5" packer. TIH and set at 1058'. R/U cementing services. Pumped plug #2 from 1540' to 1165' to cover the Queen formation top. Plug #2 consisted of 108 sx, 29 sx in 4.5" casing and 79 sx in annulus. TOOH. WOC. TIH and tagged top of plug #2 at 900'.

Plug #3: (Yates Formation Top, 869' to 326', 47 Sacks Type I/II Cement)

R/U wireline services. Attempted to RIH but could not get to bottom. POOH. P/U 4.5" casing scraper. Round tripped with scraper to 800'. R/U wireline services. RIH and perforated at 822'. POOH. TIH with tubing and pumped salt gel spacer. TOOH. P/U 4.5" packer. TIH and set packer at 358'. Successfully established an injection rate. TOOH and L/D packer. TIH. R/U cementing services. Pumped plug #3 from 869' to 447' to cover the Yates formation top. Plug #3 consisted of 33 sx. TOOH. WOC 4 hours. TIH and tagged top of plug #3 at 580'. Attempted to pressure test but was unsuccessful. R/U cementing services. Continued pumping plug #3 from 580' to 400' with 14 sx. TIH and tagged the top of plug #3 at 326'.

Plug #4: (Surface Casing Shoe, 150' to Surface', 90 Sacks Type III Cement (10 sx in 4.5", 70 in 8.6") (10 sx for top off))

R/U wireline services. RIH and perforated at 172'. P/U 4.5" packer. TIH and set packer at 161'. Attempted to pressure test above packer but test failed. TOOH. P/U 4.5" retainer. TIH and set at 161'. Established circulation through BH valve. R/U cementing services. Began pumping into retainer and cement locked up. Pump pressured up to 5,000 PSI. Stung out of retainer. Reverse circulated hole clean. Attempted to pressure test casing but was unsuccessful. R/U wireline services. RIH and perforated at 150'. POOH. P/U 4.5" packer. TIH and set packer at 128'. Successfully established injection rate through packer, into perforations and out BH valve. Attempted

to pressure test casing above packer but was unsuccessful. Unset packer and TOOH. P/U 4.5" CR. TIH with 4.5" CR and set at 134'. R/U cementing services. Pumped plug #4 through CR, into perforations and out BH valve at surface, stung out of CR and pumped cement to surface in 4.5" casing. R/U water jet wellhead cutter. Preformed water jet cutoff. Removed old wellhead. Tagged cement at 51' in 4.5" casing, and 32' in 8.6" Casing. R/U cementing services and filled both casing strings to surface with 10 sx (6 sx in 8.6", 4 sx in 4.5"). Welder attached marker per NMOCD regulations.

Completed Wellbore Diagram

Blue Sky NM Inc.
Twin Lakes San Andres Unit #078
API: 30-005-60995
Chaves County, New Mexico

Surface Casing

8.625" 20# @ 128 ft
OH: 12.25'

Retainers at 161' and 134'

Plug 4

150 feet - surface
150 foot plug
90 Sacks of Type I/II Cement

Plug 3

869 feet - 326 feet
543 foot plug
47 Sacks of Type I/II Cement

Plug 2

1540 feet - 900 feet
640 foot plug
108 Sacks of Type I/II Cement

Plug 1

2619 feet - 1943 feet
676 foot plug
58 sacks of Type I/II Cement

Perforations

2744 feet - 2759 feet

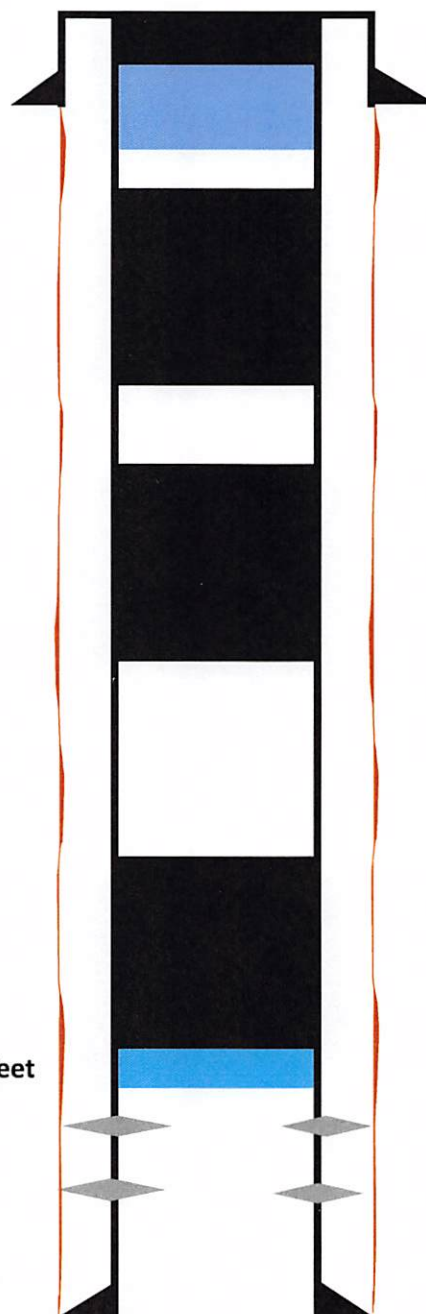
Formation

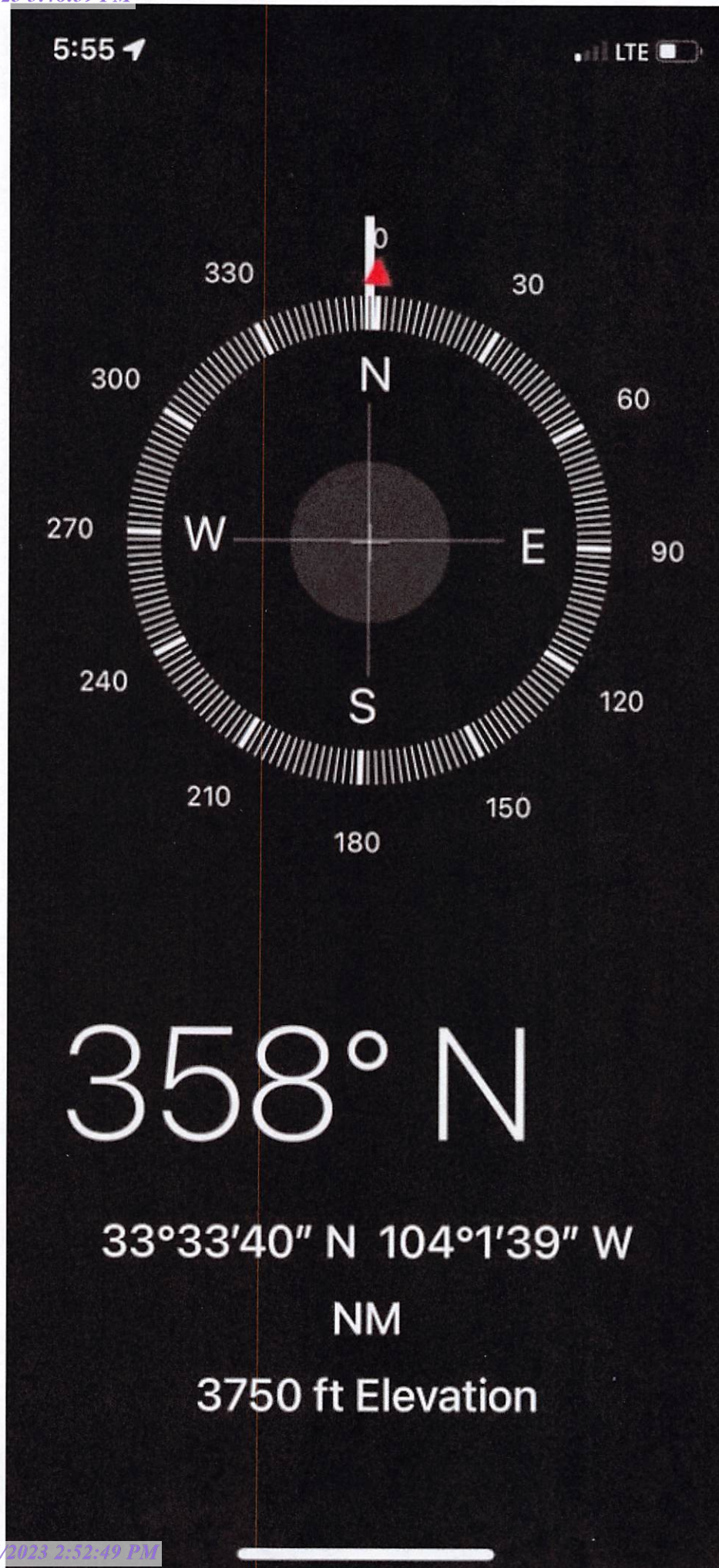
Yates - 772 feet
Queen - 1490 feet
San Andres - 2050 feet

Retainer @ 2669 feet

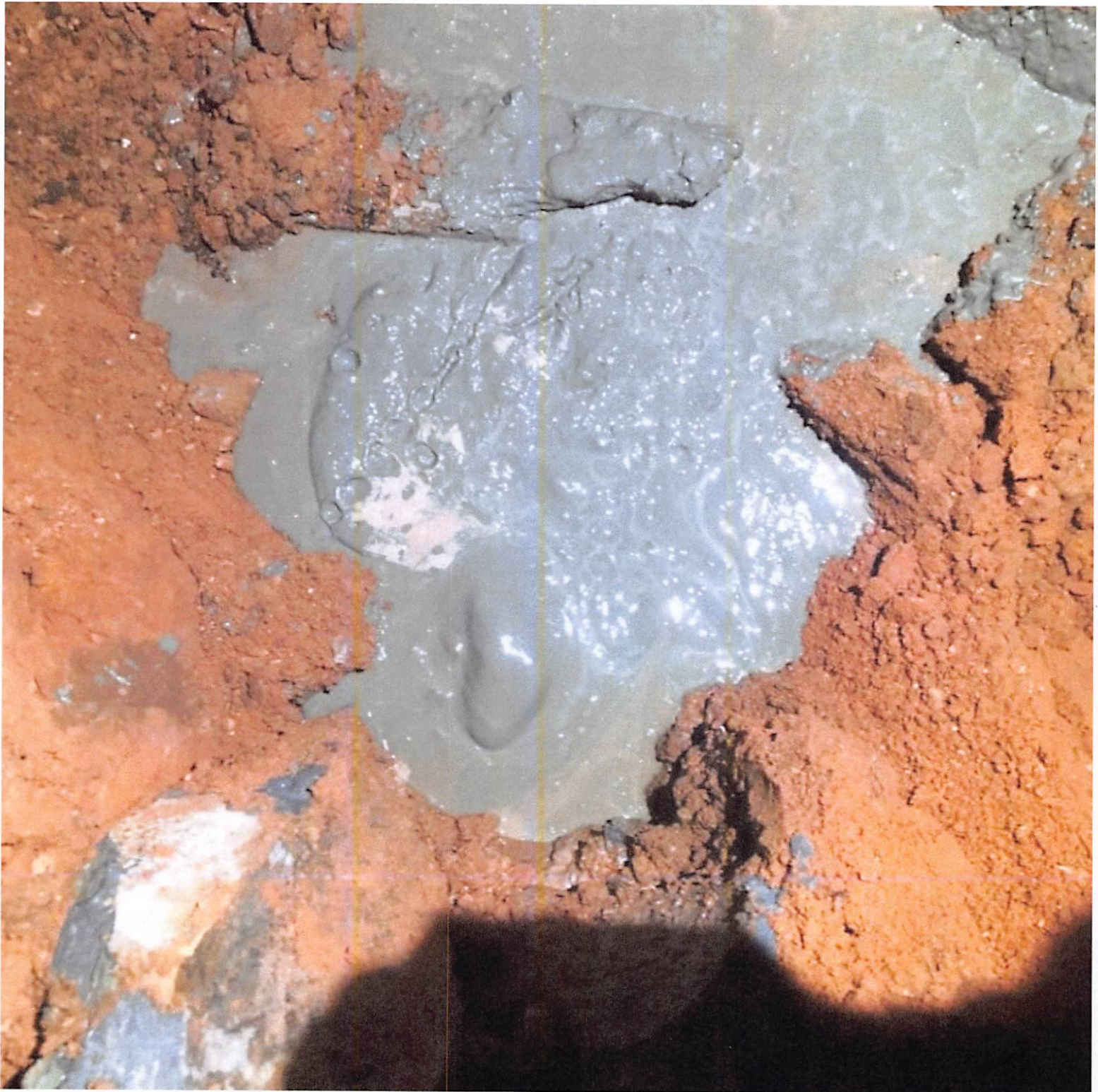
Production Casing

4.5" 9.5# @ 2825 feet
OH: 7.875"

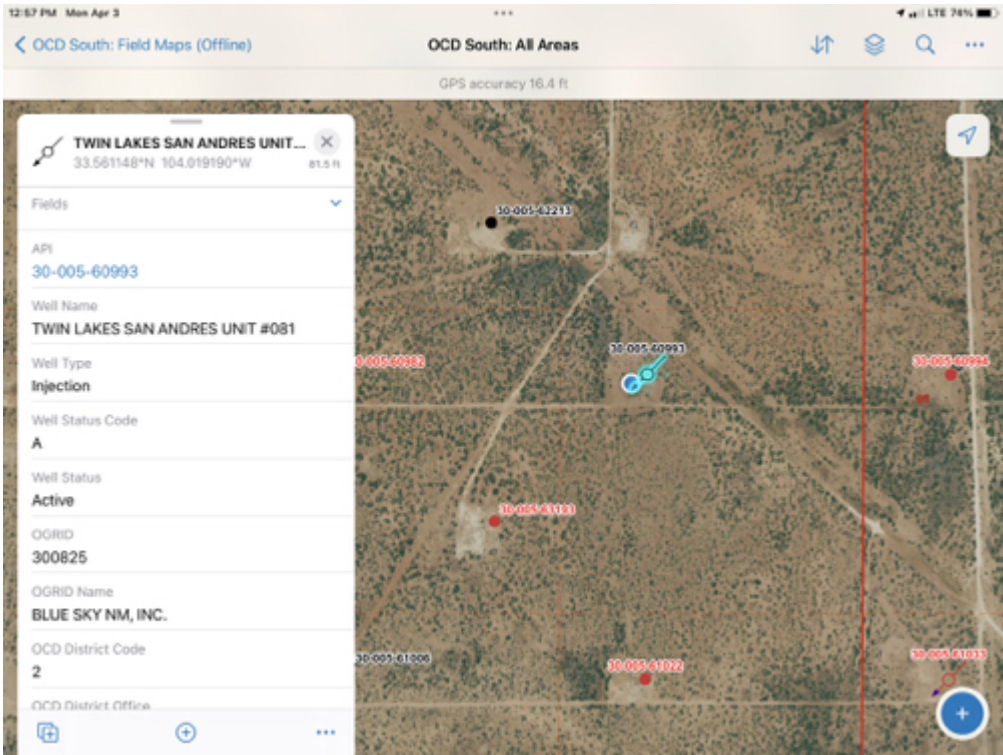














District I
1625 N. French Dr., Hobbs, NM 88240
Phone:(575) 393-6161 Fax:(575) 393-0720
District II
811 S. First St., Artesia, NM 88210
Phone:(575) 748-1283 Fax:(575) 748-9720
District III
1000 Rio Brazos Rd., Aztec, NM 87410
Phone:(505) 334-6178 Fax:(505) 334-6170
District IV
1220 S. St Francis Dr., Santa Fe, NM 87505
Phone:(505) 476-3470 Fax:(505) 476-3462

State of New Mexico
Energy, Minerals and Natural Resources
Oil Conservation Division
1220 S. St Francis Dr.
Santa Fe, NM 87505

COMMENTS

Action 181424

COMMENTS

Operator: J.A. Drake Well Service Inc. 607 W Pinon Farmington, NM 87401	OGRID: 330485
	Action Number: 181424
	Action Type: [C-103] Sub. Plugging (C-103P)

COMMENTS

Created By	Comment	Comment Date
john.harrison	Need final photos and site cleanup	4/17/2023

District I
1625 N. French Dr., Hobbs, NM 88240
Phone:(575) 393-6161 Fax:(575) 393-0720
District II
811 S. First St., Artesia, NM 88210
Phone:(575) 748-1283 Fax:(575) 748-9720
District III
1000 Rio Brazos Rd., Aztec, NM 87410
Phone:(505) 334-6178 Fax:(505) 334-6170
District IV
1220 S. St Francis Dr., Santa Fe, NM 87505
Phone:(505) 476-3470 Fax:(505) 476-3462

State of New Mexico
Energy, Minerals and Natural Resources
Oil Conservation Division
1220 S. St Francis Dr.
Santa Fe, NM 87505

CONDITIONS

Action 181424

CONDITIONS

Operator: J.A. Drake Well Service Inc. 607 W Pinon Farmington, NM 87401	OGRID: 330485
	Action Number: 181424
	Action Type: [C-103] Sub. Plugging (C-103P)

CONDITIONS

Created By	Condition	Condition Date
john.harrison	None	4/17/2023