

Submit 1 Copy To Appropriate District Office

District I - (575) 393-6161
1625 N. French Dr., Hobbs, NM 88240
District II - (575) 748-1283
811 S. First St., Artesia, NM 88210
District III - (505) 334-6178
1000 Rio Brazos Rd., Aztec, NM 87410
District IV - (505) 476-3460
1220 S. St. Francis Dr., Santa Fe, NM 87505

State of New Mexico
Energy, Minerals and Natural Resources

OIL CONSERVATION DIVISION
1220 South St. Francis Dr.
Santa Fe, NM 87505

Form C-103
Revised July 18, 2013

WELL API NO.
30-025-24641

5. Indicate Type of Lease
STATE ☐ FEE ☒

6. State Oil & Gas Lease No.
FEE

7. Lease Name or Unit Agreement Name

Judy

8. Well Number. #1

9. OGRID Number
37636

10. Pool name or Wildcat
Langlie Mattix / 7 Rivers

SUNDRY NOTICES AND REPORTS ON WELLS

(DO NOT USE THIS FORM FOR PROPOSALS TO DRILL OR TO DEEPEN OR PLUG BACK TO A DIFFERENT RESERVOIR. USE "APPLICATION FOR PERMIT" (FORM C-101) FOR SUCH PROPOSALS.)

1. Type of Well: Oil Well ☒ Gas Well ☐ Other Injection ☐

2. Name of Operator
State of New Mexico formerly Primal Energy Corporation

3. Address of Operator
1625 N. French Drive, Hobbs, N 88240

4. Well Location

Unit Letter C : 990 feet from the N line and 1980 feet from the W line
Section 7 Township 25S Range 37E NMPM Lea County

11. Elevation (Show whether DR, RKB, RT, GR, etc.)
3159' GR

12. Check Appropriate Box to Indicate Nature of Notice, Report or Other Data

NOTICE OF INTENTION TO:

PERFORM REMEDIAL WORK ☐ PLUG AND ABANDON ☐
TEMPORARILY ABANDON ☐ CHANGE PLANS ☐
PULL OR ALTER CASING ☐ MULTIPLE COMPL ☐
DOWNHOLE COMMINGLE ☐
CLOSED-LOOP SYSTEM ☐
OTHER: ☐

SUBSEQUENT REPORT OF:

REMEDIAL WORK ☐ ALTERING CASING ☐
COMMENCE DRILLING OPNS. ☐ P AND A ☒
CASING/CEMENT JOB ☐
OTHER: ☐

13. Describe proposed or completed operations. (Clearly state all pertinent details, and give pertinent dates, including estimated date of starting any proposed work). SEE RULE 19.15.7.14 NMAC. For Multiple Completions: Attach wellbore diagram of proposed completion or recompletion.

2/15/23: MOL. Spot equipment onto location, held off on RU Rig due to windy conditions. Check well pressures and open well to pit; 0# Casing, 0# Tubing, and 0# BH. Secure well and SDFD.

2/16/23: Held JSA. Check well pressures; 0# csg. 0# tbg. RU Rig, NU BOP. TOOH and LD prod tbg. RU A Plus WL and RIH w/ GRJB to 2600'. POOH and LD GRJB and RU and RIH w/ 4-1/2" CIBP and set @ 2565'. Load hole with water. RIH w/ CBL, run CBL from 2565' to surface. RD WL. Secure well and SDFD.

2/17/23: Held JSA. Check well pressures and open well to pit; no pressure. TIH w/ tbg. to 2565', establish circulation, circulate well clean w/ 25 sxs Salt Gel solution. Wait on cement to arrive on location. Secure well and SDFD.

2/21/23: Held JSA. Check well pressures and open to pit; no pressures. Establish circulation with 25 sxs Salt Gel solution. Pressure test Casing to 500#, tested good. Plug #1: 25 sxs Type III cmt from 2565' @ 14.8# 1.3 yield. TOOH w/ tbg LD 44 joints. RU A Plus WL, RIH and perf @ 1188', RD WL. TIH w/ 4-1/2" packer and establish circulation out perfs. Plug #2: 63 sxs Type III cement @ 14.8# 1.3 yield out perfs @ 1188'. TOOH standing back all tubing and WOC for 3.5 hours. TIH and tag Plug #2 @ 832'. TOOH and LD tbg. RU A Plus WL. SDFD.

2/22/23: Held JSA. Check well pressures and open well to pit; no pressures. RIH perf @ 390'. POOH and RD WL. TIH w/ 4-1/2" packer and establish circulation. Plug #3: 53 sxs Type III cmt @ 14.8# 1.3 yield out perfs @ 390'; 38 sxs out and 15 sxs in. TOOH and LD tbg. WOC for 4.5 hours. TIH, did not tag plug to 440'. Plug #3A: 15 sxs Type III cmt @ 14.8# 1.3 yield from 440'. TOOH. WOC overnight. SDFD.

2/23/23: Held JSA. Check well pressure and open to pit; no pressures. TIH to tag Plug #3A, no tag. TIH to 440'. Plug #3B: 15 sxs Type III cmt @ 14.8# 1.3 yield from 440'. TOOH and WOC. TIH and tag Plug #3B @ 260'. TOOH and LD tbg. RU A Plus WL and RIH and perf @ 150'. POOH and RD WL. RU pump to casing and establish circulation to surface. Plug #4: 35 sxs Type III cmt @ 14.8# 1.3 yield, circulated good cement to surface. SDFD.

2/24/23: Held JSA. Check well pressures and open well to pit; no pressures. Top off well and RD all equipment and MOL.

Note: P&A marker will be set once is tested by Welldone. A follow up sundry will be submitted when marker is set.

I hereby certify that the information above is true and complete to the best of my knowledge and belief.

SIGNATURE

Nell Lindemeyer

TITLE

Eng Tech

DATE

4/18/23

Type or print name

Nell Lindemeyer

E-mail address:

nelloapluswell.com

PHONE:

5054866958

For State Use Only

APPROVED BY:

[Signature]

TITLE

Petroleum Specialist

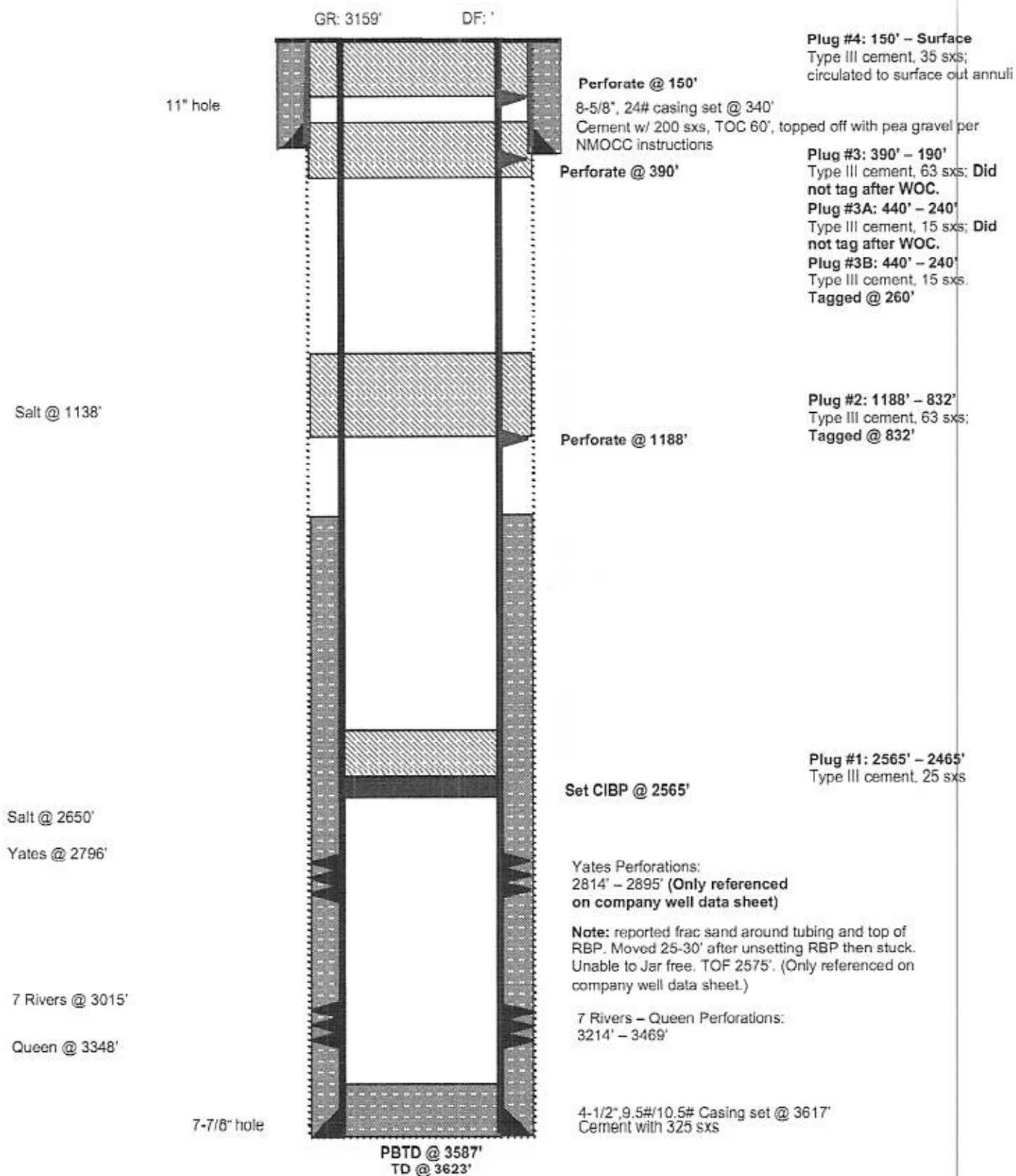
DATE

4/25/2023

Conditions of Approval (if any):

Judy 001 **As Plugged on 2/24/23**

Langlie Mattix / 7 Rivers
Unit C, 990' FNL & 1980' FWL, Section 7, T25S, R37E
Lea County, NM, API #30-025-24641





District I
1625 N. French Dr., Hobbs, NM 88240
Phone:(575) 393-6161 Fax:(575) 393-0720
District II
811 S. First St., Artesia, NM 88210
Phone:(575) 748-1283 Fax:(575) 748-9720
District III
1000 Rio Brazos Rd., Aztec, NM 87410
Phone:(505) 334-6178 Fax:(505) 334-6170
District IV
1220 S. St Francis Dr., Santa Fe, NM 87505
Phone:(505) 476-3470 Fax:(505) 476-3462

State of New Mexico
Energy, Minerals and Natural Resources
Oil Conservation Division
1220 S. St Francis Dr.
Santa Fe, NM 87505

CONDITIONS

Action 208767

CONDITIONS

Operator: A-PLUS WELL SERVICE, INC. P.O. Box 1979 Farmington, NM 87499	OGRID: 370317
	Action Number: 208767
	Action Type: [C-103] Sub. Plugging (C-103P)

CONDITIONS

Created By	Condition	Condition Date
john.harrison	None	4/26/2023