

## Energy, Minerals and Natural Resources

Revised August 1, 2011

Office  
District I - (575) 393-6161  
1625 N. French Dr., Hobbs, NM 88240  
District II - (575) 748-1283  
811 S. First St., Artesia, NM 88210  
District III - (505) 334-6178  
1000 Rio Brazos Rd., Aztec, NM 87410  
District IV - (505) 476-3460  
1220 S. St. Francis Dr., Santa Fe, NM  
87505

OIL CONSERVATION DIVISION  
1220 South St. Francis Dr.  
Santa Fe, NM 87505

WELL API NO.

30-015-37504

5. Indicate Type of Lease

STATE ☒ FEE ☐

6. State Oil &amp; Gas Lease No.

## SUNDRY NOTICES AND REPORTS ON WELLS

(DO NOT USE THIS FORM FOR PROPOSALS TO DRILL OR TO DEEPEN OR PLUG BACK TO A DIFFERENT RESERVOIR. USE "APPLICATION FOR PERMIT" (FORM C-101) FOR SUCH PROPOSALS.)

1. Type of Well: Oil Well ☒ Gas Well ☐ Other

2. Name of Operator

CIMAREX ENERGY CO. OF COLORADO

3. Address of Operator

600 N. MARIENFELD, SUITE 600, MIDLAND, TEXAS 79701

4. Well Location

Unit Letter O : 330 feet from the SOUTH line and 1650 feet from the EAST line  
Section 15 Township 19S Range 29E NMPM LEA County

11. Elevation (Show whether DR, RKB, RT, GR, etc.)

3,311' - GR

7. Lease Name or Unit Agreement Name

PARKWAY STATE

8. Well Number

004H

9. OGRID Number

162683

10. Pool name or Wildcat

TURKEY TRACK; BONE SPRING

## 12. Check Appropriate Box to Indicate Nature of Notice, Report or Other Data

## NOTICE OF INTENTION TO:

PERFORM REMEDIAL WORK ☐ PLUG AND ABANDON ☒  
TEMPORARILY ABANDON ☐ CHANGE PLANS ☐  
PULL OR ALTER CASING ☐ MULTIPLE COMPL ☐  
DOWNHOLE COMMINGLE ☐

OTHER: ☐

## SUBSEQUENT REPORT OF:

REMEDIAL WORK ☐ ALTERING CASING ☐  
COMMENCE DRILLING OPNS. ☐ P AND A  
CASING/CEMENT JOB ☐

OTHER: ☐

Notify OCD 24 hrs. prior to any work  
done

13. Describe proposed or completed operations. (Clearly state all pertinent details, and give pertinent dates, including estimated date of starting any proposed work). SEE RULE 19.15.7.14 NMAC. For Multiple Completions: Attach wellbore diagram of proposed completion or recompletion.

Test csg 500psi / 30 min - Run CBL

WOC &amp; Tag

- 1) SET 7" CIBP @ 7,500'; PUMP (25) SXS. CLASS "C" CMT. @ 7,500'-7,400'; CIRC. WELL W/ M.L.F.
- 2) PUMP (40) SXS. CLASS "C" CMT. @ 5,585'-5,435' (SPACER PLUG).
- 3) PUMP (35) SXS. CLASS "C" CMT. @ 3,684'-3,554' (T/DLWR.) spot 25 sx @ 50' below to 50' above TOC minimum - see CBL WOC & tag
- 4) PERF. X ATTEMPT TO SQZ. (60) SXS. CLASS "C" @ 2,575'-2,455' (9-5/8" CSG.SHOE); WOC X TAG.
- 5) PERF. X ATTEMPT TO SQZ. (50) SXS. CLASS "C" CMT. @ 1,435'-1,325' (T/YATES, B/SALT); WOC X TAG TOC.
- 6) PERF. X ATTEMPT TO SQZ. (45) SXS. CLASS "C" CMT. @ 515'-415' (13-3/8" CSG.SHOE); WOC X TAG TOC.
- 7) PERF. X CIRC. TO SURF., FILLING ALL ANNULI, (25) SXS. CLASS "C" CMT. @ 6'-3'. 200' - 35 sx cmt
- 8) DIG OUT X CUT OFF WELLHEAD 3' B.G.L.; VERIFY CMT. TO SURF. ON ALL ANNULI; WELD ON STEEL PLATE TO CSGS. X INSTALL DRY HOLE MARKER.
- 9) DURING THIS PROCEDURE WE PLAN TO USE A CLOSED-LOOP SYSTEM W/ A STEEL TANK AND HAUL CONTENTS TO THE REQUIRED DISPOSAL, PER OCD RULE 19.15.17.

Spud Date:

Rig Release Date:

\*\*\*\*SEE ATTACHED COA's\*\*\*\*

MUST BE PLUGGED BY 4/18/2024

I hereby certify that the information above is true and complete to the best of my knowledge and belief.

SIGNATURE

TITLE: AGENT

DATE: 04/07/2023

Type or print name: DAVID A. EYLER

E-mail address: DEYLER@MILAGRO-RES.COM PHONE: 432.687.3033

For State Use Only

APPROVED BY:

TITLE

Staff Manager

DATE 4/28/23

Conditions of Approval (if any):

## CONDITIONS FOR PLUGGING AND ABANDONMENT

### OCD - Southern District

The following is a guide or checklist in preparation of a plugging program, this is not all inclusive and care must be exercised in establishing special plugging programs in unique and unusual cases, **Notify NMOCD District Office II at (575)-748-1283 at least 24 hours before beginning work. After MIRU rig will remain on well until it is plugged to surface. OCD is to be notified before rig down. Company representative will be on location during plugging procedures.**

1. A notice of intent to plug and abandon a wellbore is required to be approved before plugging operations are conducted. A cement evaluation tool is required in order to ensure isolation of producing formations, protection of water and correlative rights. A cement bond log or other accepted cement evaluation tool is to be provided to the division for evaluation if one has not been previously run or if the well did not have cement circulated to surface during the original casing cementing job or subsequent cementing jobs. Insure all bradenheads have been exposed, identified and valves are operational prior to rig up.
2. Closed loop system is to be used for entire plugging operation. Upon completion, contents of steel pits are to be hauled to a permitted disposal location.
3. Trucking companies being used to haul oilfield waste fluids to a disposal – commercial or private – shall have an approved NMOCD C-133 permit. A copy of this permit shall be available in each truck used to haul waste products. It is the responsibility of the operator as well as the contractor, to verify that this permit is in place prior to performing work. Drivers shall be able to produce a copy upon request of an NMOCD Field inspector.
4. Filing a subsequent C-103 will serve as notification that the well has been plugged.
5. A final C-103 shall be filed (and a site inspection by NMOCD Inspector to determine if the location is satisfactorily cleaned, all equipment, electric poles and trash has been removed to Meet NMOCD standards) before bonding can be released.
6. If work has not begun within 1 Year of the approval of this procedure, an extension request must be file stating the reason the well has not been plugged.
7. Squeeze pressures are not to exceed 500 psi, unless approval is given by NMOCD.
8. Produced water **will not** be used during any part of the plugging operation.
9. Mud laden fluids must be placed between all cement plugs mixed at 25 sacks per 100 bbls of water.
10. All cement plugs will be a minimum of 100' in length or a minimum of 25 sacks of cement, whichever is greater. 50' of calculated cement excess required for inside casing plugs and 100% calculated cement excess required on outside casing plugs.
11. Class 'C' cement will be used above 7500 feet.
12. Class 'H' cement will be used below 7500 feet.
13. A cement plug is required to be set 50' above and 50' below, casing stubs, DV tools, attempted casing cut offs, cement tops outside casing, salt sections and anywhere the casing is perforated, these plugs require a 4 hour WOC and then will be tagged
14. All Casing Shoes Will Be Perforated 50' below shoe depth and Attempted to be Squeezed, cement needs to be 50' above and 50' Below Casing Shoe inside the Production Casing.

16. When setting the top out cement plug in production, intermediate and surface casing, wellbores should remain full at least 30 minutes after plugs are set
17. A CIBP is to be set within 100' of production perforations, capped with 100' of cement, WOC 4 hours and tag.
18. A CIBP with 35' of cement may be used in lieu of the 100' plug if set with a bailer. This plug will be placed within 100' of the top perforation, (WOC 4 hrs and tag).
19. No more than 3000' is allowed between cement plugs in cased hole and 2000' in open hole.
20. Some of the Formations to be isolated with cement plugs are: These plugs to be set to isolate formation tops
  - A) Fusselman
  - B) Devonian
  - C) Morrow
  - D) Wolfcamp
  - E) Bone Springs
  - F) Delaware
  - G) Any salt sections
  - H) Abo
  - I) Glorieta
  - J) Yates.
  - K) Cherry Canyon - Eddy County
  - L) Potash---(In the R-111-P Area (Page 3 & 4), a solid cement plug must be set across the salt section. Fluid used to mix the cement shall be saturated with the salts that are common to the section penetrated and in suitable proportions, not more than 3% calcium chloride (by weight of cement) will be considered the desired mixture whenever possible, WOC 4 hours and tag, this plug will be 50' below the bottom and 50' above the top of the Formation.
21. If cement does not exist behind casing strings at recommended formation depths, the casing can be cut and pulled with plugs set at recommended depths. If casing is not pulled, perforations will be shot and cement squeezed behind casing, WOC and tagged. These plugs will be set 50' below formation bottom to 50' above formation top inside the casing

#### DRY HOLE MARKER REQUIREMENTS

The operator shall mark the exact location of the plugged and abandoned well with a steel marker not less than four inches in diameter, 3' below ground level with a plate of at least ¼" welded to the top of the casing and the dry hole marker welded on the plate with the following information welded on the dry hole marker:

1. Operator name 2. Lease and Well Number 3.API Number 4. Unit Letter 5. Quarter Section (feet from the North, South, East or West) 6. Section, Township and Range 7. Plugging Date 8. County (SPECIAL CASES)-----AGRICULTURE OR PRARIE CHICKEN BREEDING AREAS

In these areas, a below ground marker is required with all pertinent information mentioned above on a plate, set 3' below ground level, a picture of the plate will be supplied to NMOCD for record, the exact location of the marker (longitude and latitude by GPS) will be provided to NMOCD (We typically require a current survey to verify the GPS)

#### SITE REMEDIATION DUE WITHIN ONE YEAR OF WELL PLUGGING COMPLETION



## R-111-P Area

### T 18S – R 30E

Sec 10 Unit P. Sec 11 Unit M,N. Sec 13 Unit L,M,N. Sec 14 Unit C -P. Sec 15 Unit A G,H,I,J,K,N,O,P. Sec 22 Unit All except for M. Sec 23, Sec 24 Unit C,D,E,L, Sec 26 Unit A-G, Sec 27 Unit A,B,C

### T 19S – R 29E

Sec 11 Unit P. Sec 12 Unit H-P. Sec 13. Sec 14 Unit A,B,F-P. Sec 15 Unit P. Sec 22 Unit A,B,C,F,G,H,I,J K,N,O,P. Sec 23. Sec 24. Sec 25 Unit D. Sec 26 Unit A- F. Sec 27 Unit A,B,C,F,G,H.

### T 19S – R 30E

Sec 2 Unit K,L,M,N. Sec 3 Unit I,L,M,N,O,P. Sec 4 Unit C,D,E,F,G,I-P. Sec 5 Unit A,B,C,E-P. Sec 6 Unit I,O,P. Sec 7 – Sec 10. Sec 11 Unit D, G—P. Sec 12 Unit A,B,E-P. Sec 13 Unit A-O. Sec 14-Sec 18. Sec 19 Unit A-L, P. Sec 20 – Sec 23. Sec 24 Unit C,D,E,F,L,M,N. Sec 25 Unit D. Sec 26 Unit A-G, I-P. Sec 27, Sec 28, Sec 29 Unit A,B,C,D,F,G,H,I,J,O,P. Sec 32 Unit A,B,G,H,I,J,N,O,P. Sec 33. Sec 34. Sec 35. Sec 36 Unit D,E,F,I-P.

### T 19S – R 31E

Sec 7 Unit C,D,E,F,L. Sec 18 Unit C,D,E,F,G,K,L. Sec 31 Unit M. Sec 34 Unit P. Sec 35 Unit M,N,O. Sec 36 Unit O,P.

### T 20S – R 29E

Sec 1 Unit H,I,P. Sec 13 Unit E,L,M,N. Sec 14 Unit B-P. Sec 15 Unit A,H,I,J,N,O,P. Sec 22 Unit A,B,C,F,G,H,I,J,O,P. Sec 23. Sec 24 Unit C,D,E,F,G,J-P. Sec 25 Unit A-O. Sec 26. Sec 27 Unit A,B,G,H,I,J,O,P. Sec 34 Unit A,B,G,H. Sec 35 Unit A-H. Sec 36 Unit B-G.

### T 20S – R 30E

Sec 1 – Sec 4. Sec 5 Unit A,B,C,E-P. Sec 6 Unit E,G-P. Sec 7 Unit A-H,I,J,O,P. Sec 8 – 17. Sec 18 Unit A,B,G,H,I,J,O,P. Sec 19 Unit A,B,G,H,I,J,O,P. Sec 20 – 29. Sec 30 Unit A-L,N,O,P. Sec 31 Unit A,B,G,H,I,P. Sec 32 – Sec 36.

### T 20S – R 31E

Sec 1 Unit A,B,C,E-P. Sec 2. Sec 3 Unit A,B,G,H,I,J,O,P. Sec 6 Unit D,E,F,J-P. Sec 7. Sec 8 Unit E-P. Sec 9 Unit E,F,J-P. Sec 10 Unit A,B,G-P. Sec 11 – Sec 36.

### T 21S – R 29E

Sec 1 – Sec 3. Sec 4 Unit L1 – L16,I,J,K,O,P. Sec 5 Unit L1. Sec 10 Unit A,B,H,P. Sec 11 – Sec 14. Sec 15 Unit A,H,I. Sec 23 Unit A,B. Sec 24 Unit A,B,C,D,F,G,H,I,J,O,P. Sec 25 Unit A,O,P. Sec 35 Unit G,H,I,J,K,N,O,P. Sec 36 A,B,C,F – P.

### T 21S – R 30E

Sec 1 – Sec 36

### T 21S – R 31E

Sec 1 – Sec 36

### T 22S – R 28E

Sec 36 Unit A,H,I,P.

**T 22S – R 29E**

Sec 1. Sec2. Sec 3 Unit I,J,N,O,P. Sec 9 Unit G – P. Sec 10 – Sec 16. Sec 19 Unit H,I,J. Sec 20 – Sec 28. Sec 29 Unit A,B,C,D,G,H,I,J,O,P. Sec 30 Unit A. Section 31 Unit C – P. Sec 32 – Sec 36

**T 22S – R 30E**

Sec 1 – Sec 36

**T 22S – R 31E**

Sec 1 – Sec 11. Sec 12 Unit B,C,D,E,F,L. Sec 13 Unit E,F,K,L,M,N. Sec 14 – Sec 23. Sec 24 Unit C,D,E,F,K,L,M,N. Sec 25 Unit A,B,C,D. Sec 26 Unit A,BC,D,G,H. Sec 27 – Sec 34.

**T 23S – R 28E**

Sec 1 Unit A

**T 23S – R 29E**

Sec 1 – Sec 5. Sec 6 Unit A – I, N,O,P. Sec 7 Unit A,B,C,G,H,I,P. Sec 8 Unit A – L, N,O,P. Sec 9 – Sec 16. Sec 17 Unit A,B,G,H,I,P. Sec 21 – Sec 23. Sec 24 Unit A – N. Sec 25 Unit D,E,L. Sec 26. Sec 27. Sec 28 Unit A – J, N,O,P. Sec 33 Unit A,B,C. Sec 34 Unit A,B,C,D,F,G,H. Sec 35. Sec 36 Unit B,C,D,E,F,G,K,L.

**T 23S – R 30E**

Sec 1 – Sec 18. Sec 19 Unit A – I,N,O,P. Sec 20, Sec 21. Sec 22 Unit A – N, P. Sec 23, Sec 24, Sec 25. Sec 26 Unit A,B,F-P. Sec 27 Unit C,D,E,I,N,O,P. Sec 28 Unit A – H, K,L,M,N. Sec 29 Unit A – J, O,P. Sec 30 Unit A,B. Sec 32 A,B. Sec 33 Unit C,D,H,I,O,P. Sec 34, Sec 35, Sec 36.

**T 23S – R 31E**

Sec 2 Unit D,E,J,O. Sec 3 – Sec 7. Sec 8 Unit A – G, K – N. Sec 9 Unit A,B,C,D. Sec 10 Unit D,P. Sec 11 Unit G,H,I,J,M,N,O,P. Sec 12 Unit E,L,K,M,N. Sec 13 Unit C,D,E,F,G,J,K,L,M,N,O. Sec 14. Sec 15 Unit A,B,E – P. Sec 16 Unit I, K – P. Sec 17 Unit B,C,D,E, I – P. Sec 18 – Sec 23. Sec 24 Unit B – G, K,L,M,N. Sec 25 Unit B – G, J,K,L. Sec 26 – Sec 34. Sec 35 Unit C,D,E.

**T 24S – R 29E**

Sec 2 Unit A, B, C, D. Sec 3 Unit A

**T 24S – R 30E**

Sec 1 Unit A – H, J – N. Sec 2, Sec 3. Sec 4 Unit A,B,F – K, M,N,O,P. Sec 9 Unit A – L. Sec 10 Unit A – L, O,P. Sec 11. Sec 12 Unit D,E,L. Sec 14 Unit B – G. Sec 15 Unit A,B,G,H.

**T 24S – R 31E**

Sec 3 Unit B – G, J – O. Sec 4. Sec 5 Unit A – L, P. Sec 6 Unit A – L. Sec 9 Unit A – J, O,P. Sec 10 Unit B – G, K – N. Sec 35 Unit E – P. Sec 36 Unit E,K,L,M,N.

**T 25S – R 31E**

Sec 1 Unit C,D,E,F. Sec 2 Unit A – H.

**Coterra Energy Company**

**2/19/2010**

<b>Property #:</b>	309548-091
<b>API#:</b>	30-015-37504
<b>TVD/MD:</b>	7,989' / 12,552'
<b>PBTD:</b>	12,260'
<b>Field:</b>	Parkway
<b>Objective:</b>	Second Bone Spring
<b>TVD/MD:</b>	7989' / 12,552
<b>Elevation:</b>	GL: 3,311' KB: 3,329' (18')

## CURRENT

### Hole Size

Updated 03/29/2023 by S. BRANNAN

**20" Conductor @ 60'**

**17-1/2"**

13-3/8", 48.0#, H40, ST&C @ 465'

**560 sxs Cmt; Circl'd Cmt**

**12-1/4"**

## TOC @ Unknown

9-5/8", 40#, J55, LTC @ 2515'

**815 sxs Cmt; Circl;d Cmt**

8-3/4"

**TAC @ 7,216'**

**Liner hanger @ 7515**

7", 26#, P110, LTC @ 7659'

**Liner hanger @ 7515**

**950 sxs Cmt; TOC @ Unknown**

**2-7/8" 2K# fiber glass stinger 7659-8160'**

2nd Bone Spring target @ 7950'

**Run ten (10) stage assembly on 4 1/2", 11.6#, P1107515'-12,260' (4735')**

**Piolt hole TD @ 8160'**

## Parkway State Com 4H

## 7/18/2020 CURRENT TUBING DETAIL

Quantity	Description	Length	Setting Depth
1	KB Correction	20.00	20.00
219	2-7/8" 6.5# L-80 8rd EUE Tubing	7,132.62	7,152.62
1	7" x 2 7/8" TAC w/ carbide slips	2.85	7,155.47
2	2-7/8" 6.5# L-80 8rd EUE Tubing	65.40	7,220.87
1	2-7/8" API Cup Type Seat Nipple	1.15	7,222.02
1	2 7/8" x 2' L-80 sub	2.10	7,224.12
1	Cavins Mother Hubbard and Desander Combo( MB442701F)	32.25	7,256.37
1	2 7/8" EUE x 3 1/2" EUE X-Over Collar	0.60	7,256.97
6	3-1/2" 9.30# L-80 8rd EUE Tubing	190.60	7,447.57
1	3-1/2" Bull Plug	0.30	7,447.87

### Rod Detail

**9/16/2020 CURRENT ROD DETAIL**

[illegible]



## Coterra Energy Company

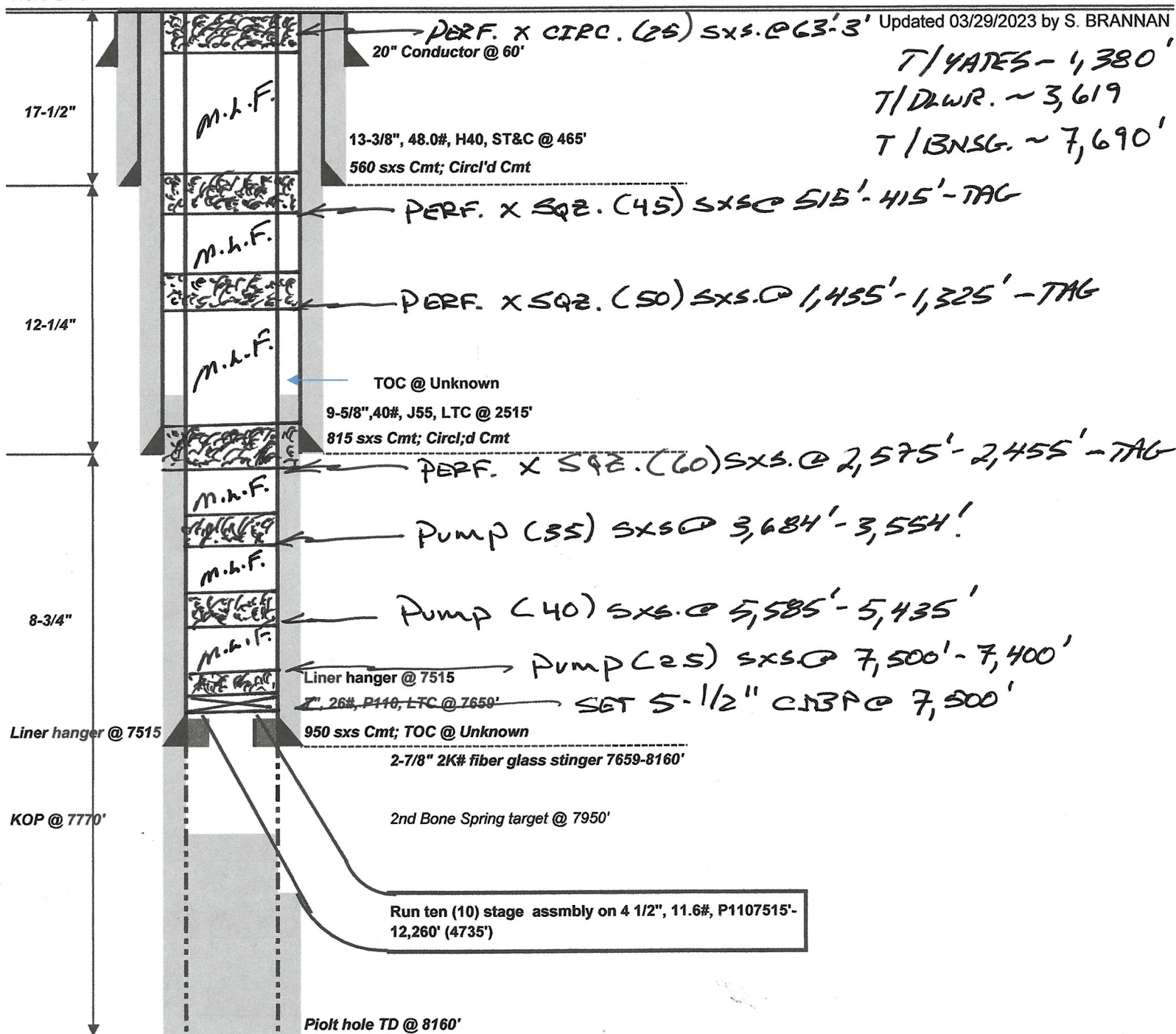
2/19/2010

Well: Parkway State 4H  
 Location: Sec 15, T19S-R29E  
 County, State: Eddy County, NM  
 Surface Location: 330 FSL, 1980 FEL  
 Bottomhole Loc: 330 FNL 1980 FEL  
 Superintendent: Mark Martino  
 Engineer: Dean Pearson

Property #: 309548-091  
 API#: 30-015-37504  
 TVD/MD: 7,989' / 12,552'  
 PBTD: 12,260'  
 Field: Parkway  
 Objective: Second Bone Spring  
 TVD/MD: 7989' / 12,552'  
 Elevation: GL: 3,311' KB: 3,329' (18')

Proposed

Hole Size



DAE 04107123

**District I**  
1625 N. French Dr., Hobbs, NM 88240  
Phone:(575) 393-6161 Fax:(575) 393-0720  
**District II**  
811 S. First St., Artesia, NM 88210  
Phone:(575) 748-1283 Fax:(575) 748-9720  
**District III**  
1000 Rio Brazos Rd., Aztec, NM 87410  
Phone:(505) 334-6178 Fax:(505) 334-6170  
**District IV**  
1220 S. St Francis Dr., Santa Fe, NM 87505  
Phone:(505) 476-3470 Fax:(505) 476-3462

**State of New Mexico**  
**Energy, Minerals and Natural Resources**  
**Oil Conservation Division**  
**1220 S. St Francis Dr.**  
**Santa Fe, NM 87505**

CONDITIONS

Action 205169

CONDITIONS

Operator: CIMAREX ENERGY CO. OF COLORADO 600 N. Marienfeld Street Midland, TX 79701	OGRID: 162683
	Action Number: 205169
	Action Type: [C-103] NOI Plug & Abandon (C-103F)

CONDITIONS

Created By	Condition	Condition Date
gcordero	None	4/28/2023