

Office
District I – (575) 393-6161
1625 N. French Dr., Hobbs, NM 88240
District II – (575) 748-1283
811 S. First St., Artesia, NM 88210
District III – (505) 334-6178
1000 Rio Brazos Rd., Aztec, NM 87410
District IV – (505) 476-3460
1220 S. St. Francis Dr., Santa Fe, NM
87505

Energy, Minerals and Natural Resources

Revised July 18, 2013

OIL CONSERVATION DIVISION
1220 South St. Francis Dr.
Santa Fe, NM 87505

WELL API NO. 30-005-10539
5. Indicate Type of Lease STATE <input checked="" type="checkbox"/> FEE <input type="checkbox"/>
6. State Oil & Gas Lease No.
7. Lease Name or Unit Agreement Name Cato San Andres Unit
8. Well Number 051
9. OGRID Number 330485
10. Pool name or Wildcat Cato; San Andres
11. Elevation (Show whether DR, RKB, RT, GR, etc.) 4168

SUNDRY NOTICES AND REPORTS ON WELLS
(DO NOT USE THIS FORM FOR PROPOSALS TO DRILL OR TO DEEPEN OR PLUG BACK TO A DIFFERENT RESERVOIR. USE "APPLICATION FOR PERMIT" (FORM C-101) FOR SUCH PROPOSALS.)

1. Type of Well: Oil Well ☒ Gas Well ☐ Other ☐

2. Name of Operator
Cano Petro of New Mexico, Inc.

3. Address of Operator
801 Cherry Street Suite 3200 Unit 25 Fort Worth, TX 76102

4. Well Location

Unit Letter I 1980 feet from the S line and 700 feet from the E line
Section 11 Township 08S Range 30E NMPM County Chaves

11. Elevation (Show whether DR, RKB, RT, GR, etc.)
4168

12. Check Appropriate Box to Indicate Nature of Notice, Report or Other Data

NOTICE OF INTENTION TO:

PERFORM REMEDIAL WORK ☐ PLUG AND ABANDON ☐
TEMPORARILY ABANDON ☐ CHANGE PLANS ☐
PULL OR ALTER CASING ☐ MULTIPLE COMPL ☐
DOWNHOLE COMMINGLE ☐
CLOSED-LOOP SYSTEM ☐
OTHER: ☐

SUBSEQUENT REPORT OF:

REMEDIAL WORK ☐ ALTERING CASING ☐
COMMENCE DRILLING OPNS. ☐ P AND A ☒
CASING/CEMENT JOB ☐
OTHER: ☐

13. Describe proposed or completed operations. (Clearly state all pertinent details, and give pertinent dates, including estimated date of starting any proposed work). SEE RULE 19.15.7.14 NMAC. For Multiple Completions: Attach wellbore diagram of proposed completion or recompletion.

NMOCD plugged well according to attached EOW report and plugged WBD.

Spud Date:

Rig Release Date:

I hereby certify that the information above is true and complete to the best of my knowledge and belief.

SIGNATURE

Drake McCulloch

TITLE Authorized Representative

DATE 6/14/22

Type or print name Drake McCulloch

E-mail address: drake@dwsrigs.com

PHONE: 505 320 1180

For State Use Only

APPROVED BY:

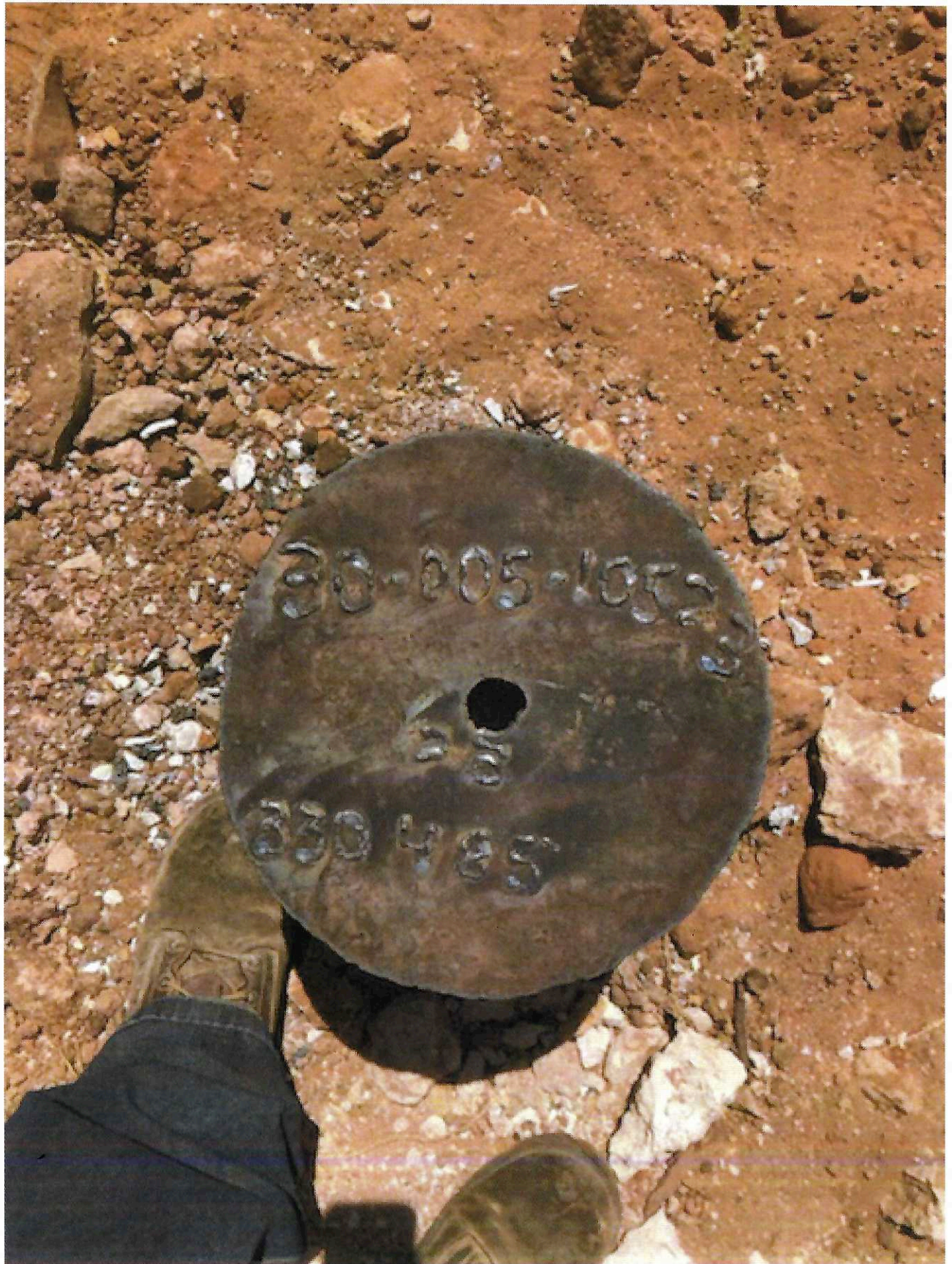
TITLE

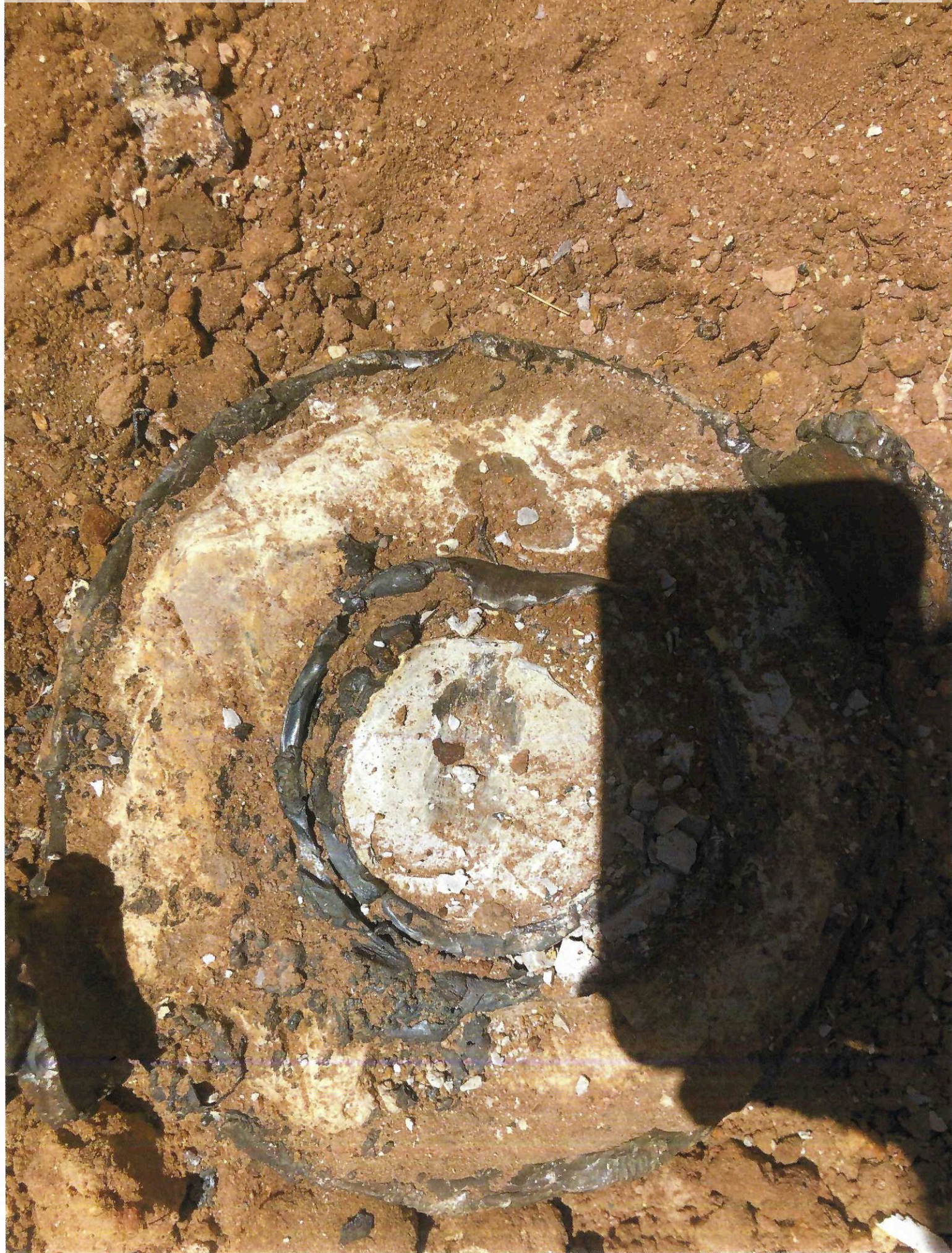
Conditions of Approval (if any):

Accepted for record – NMOCD

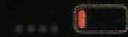
JRH 05/03/2023

DATE





11:00 ↗



102° E

33°38'23" N 103°50'35" W

4120 ft Elevation

Cano Petro Inc./NMOCD OWP

Plug And Abandonment End Of Well Report

Cato San Andres Unit #051

1980' FSL & 700' FEL, Section 11, T8S, R30E

Chaves County, NM / API 30-005-10539

Work Summary:

- 5/19/22** Made NMOCD P&A operations notifications at 9:00 AM MST.
- 5/20/22** MOL and R/U P&A rig. Prepped location with backhoe. Checked well pressures: Tubing: 0 psi, Casing: 0 psi, Bradenhead: 0 psi. Bled down well. N/D wellhead, N/U BOP and function tested. Change out handling tools to work with 2-1/16" production tubing inside 3 1/2" flush joint liner. Worked stuck tubing free. L/D 14 joints of 2-1/16" production tubing. Secured and shut-in well for the day.
- 5/21/22** Checked well pressures: Tubing: 0 psi, Casing: 0 psi, Bradenhead: 0 psi. Bled down well. L/D 103 joints of 2-1/16" production tubing. N/D BOP, N/U wellhead. R/D and MOL.
- 6/5/22** Prepped location with backhoe. MOL and R/U P&A rig. Checked well pressures: Tubing: 0 psi, Casing: 0 psi, Bradenhead: 0 psi. Bled down well. N/D wellhead, N/U BOP and function tested. Prepped and tallied 1 1/4" work string. Secured and shut-in well for the day.
- 6/6/22** Checked well pressures: Tubing: 0 psi, Casing: 0 psi, Bradenhead: 0 psi. Bled down well. P/U 1 1/4" work string to a depth of 3,510'. L/D 2 joints of tubing. R/U cementing services. Circulated wellbore clean with 25 bbls of fresh water. Pumped plug #1 from 3,443'-2,774' to cover the San Andres perforations and formation top. TOOH. WOC 4 hours. R/U wireline services. Ran CBL from top of plug #1 at approximately 2,774' to surface. CBL results were sent to NMOCD office for review. TIH to 320'. Secured and shut-in well for the day.

- 6/7/22** Checked well pressures: Tubing: 0 psi, Casing: 0 psi, Bradenhead: 0 psi. Bled down well. TIH and tagged plug #1 top at 3,408'. R/U cementing services. Pressure tested 3 ½" production liner to 500 psi in which it successfully held pressure. Re-pumped plug #1 from 3,408'-2,750'. Spotted 9.5 ppg mud spacer from 2,750'-1,595'. L/D tubing up to next plug depth. R/U cementing services. Pumped plug #2 from 1,595'-900' to cover the Yates and Rustler formation tops. Spotted 9.5 ppg mud spacer from 900'-500'. L/D tubing to surface. Secured and shut-in well for the day.
- 6/8/22** Checked well pressures: Tubing: 0 psi, Casing: 0 psi, Bradenhead: 0 psi. Bled down well. R/U wireline services. RIH and perforated squeeze holes at 508'. R/U cementing services. Successfully established circulation down 3 ½" production liner through perforations at 508' and back around and out both the Bradenhead and 4 ½" casing valves at surface with 37 bbls of fresh water. Successfully circulated cement down 3 ½" production liner through perforations at 508' and back around and out both the Bradenhead and 4 ½" casing valves at surface. N/D BOP, N/U wellhead. R/D and MOL.
- 6/13/22** Checked well pressures: Tubing: 0 psi, Casing: 0 psi, Bradenhead: 0 psi. Bled down well. Dug-out wellhead with backhoe. Performed wellhead cut-off. Cement was at surface in the 8-5/8" surface casing annulus, 4 ½" production casing annulus, and 3 ½" production liner. Installed subsurface P&A marker per NMOCD regulations. Photographed the P&A marker in place and recorded its location via GPS coordinates. Back filled P&A marker. R/D and MOL.

Plug Summary:**Plug #1:(San Andres Perforations and Formation Top 3,443'-2,750', 50 Sacks Type III Cement(Re-pumped 25 sx))**

Mixed 50 sx Type III cement and spotted a balanced plug to cover the San Andres perforations and formation top. Re-pumped 25 sx Type III.

Plug #2:(Yates and Rustler Formation Tops 1,595'-900', 25 Sacks Type III Cement)

Mixed 25 sx Type III cement and spotted a balanced plug to cover the Yates and Rustler formation tops.

Plug #3: (Surface Casing Shoe 508'-Surface, 165 Sacks Type III Cement)

RIH and perforated squeeze holes at 508'. R/U cementing services. Successfully established circulation down 3 ½" production liner through perforations at 508' and back around and out both the Bradenhead and 4 ½" casing valves at surface with 37 bbls of fresh water. Successfully circulated cement down 3 ½" production liner through perforations at 508' and back around and out both the Bradenhead and 4 ½" casing valves at surface. N/D BOP, N/U wellhead. R/D and MOL. Dug-out wellhead with backhoe. Performed wellhead cut-off. Cement was at surface in the 8-5/8" surface casing annulus, 4 ½" production casing annulus, and 3 ½" production liner. Installed subsurface P&A marker per NMOCD regulations. Photographed the P&A marker in place and recorded its location via GPS coordinates. Back filled P&A marker. R/D and MOL.

End of Well Wellbore Diagram

Cato San Andres Unit #051

API #: 30-005-10539

Chaves County, New Mexico

Plug 3

508 feet - Surface

508 foot plug

165 sacks of Type III Cement

Plug 2

1595 feet - 900 feet

695 foot plug

25 sack of Type III Cement

Plug 1

3443 feet - 2750 feet

693 foot plug

50 sacks of Type III Cement

Re-pump 25 sks Type III Cement

Perforations

3514 feet - 3557 feet

Surface Casing

8.625" 28# @ 458 ft

Formation

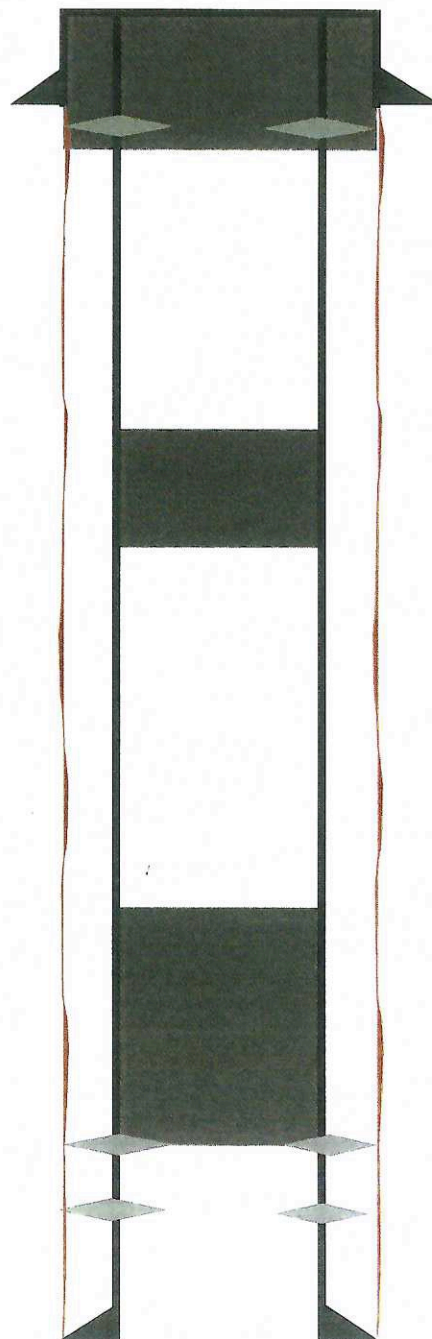
Rustler - 1072 ft

Yates - 1545 ft

San Andres - 3468 ft

Production Casing

4.5" 9.5# @ 3668 ft



District I
1625 N. French Dr., Hobbs, NM 88240
Phone:(575) 393-6161 Fax:(575) 393-0720
District II
811 S. First St., Artesia, NM 88210
Phone:(575) 748-1283 Fax:(575) 748-9720
District III
1000 Rio Brazos Rd., Aztec, NM 87410
Phone:(505) 334-6178 Fax:(505) 334-6170
District IV
1220 S. St Francis Dr., Santa Fe, NM 87505
Phone:(505) 476-3470 Fax:(505) 476-3462

State of New Mexico
Energy, Minerals and Natural Resources
Oil Conservation Division
1220 S. St Francis Dr.
Santa Fe, NM 87505

CONDITIONS

Action 118486

CONDITIONS

Operator: J.A. Drake Well Service Inc. 607 W Pinon Farmington, NM 87401	OGRID: 330485
	Action Number: 118486
	Action Type: [C-103] Sub. Plugging (C-103P)

CONDITIONS

Created By	Condition	Condition Date
john.harrison	None	5/3/2023