

Office
 District I – (575) 393-6161
 1625 N. French Dr., Hobbs, NM 88240
 District II – (575) 748-1283
 811 S. First St., Artesia, NM 88210
 District III – (505) 334-6178
 1000 Rio Brazos Rd., Aztec, NM 87410
 District IV – (505) 476-3460
 1220 S. St. Francis Dr., Santa Fe, NM
 87505

Energy, Minerals and Natural Resources

Revised July 18, 2013

OIL CONSERVATION DIVISION
 1220 South St. Francis Dr.
 Santa Fe, NM 87505

WELL API NO. 30-005-20293	
5. Indicate Type of Lease STATE <input checked="" type="checkbox"/> FEE <input type="checkbox"/>	
6. State Oil & Gas Lease No.	
7. Lease Name or Unit Agreement Name Cato San Andres Unit	
8. Well Number	053
9. OGRID Number	330485
10. Pool name or Wildcat Cato; San Andres	

SUNDRY NOTICES AND REPORTS ON WELLS
 (DO NOT USE THIS FORM FOR PROPOSALS TO DRILL OR TO DEEPEN OR PLUG BACK TO A DIFFERENT RESERVOIR. USE "APPLICATION FOR PERMIT" (FORM C-101) FOR SUCH PROPOSALS.)

1. Type of Well: Oil Well ☒ Gas Well ☐ Other ☐

2. Name of Operator
 Cano Petro of New Mexico, Inc.

3. Address of Operator
 801 Cherry Street Suite 3200 Unit 25 Fort Worth, TX 76102

4. Well Location

Unit Letter P 330 feet from the S line and 990 feet from the E line
 Section 11 Township 08S Range 30E NMPM County Chaves

11. Elevation (Show whether DR, RKB, RT, GR, etc.)
 4165

12. Check Appropriate Box to Indicate Nature of Notice, Report or Other Data

NOTICE OF INTENTION TO:

PERFORM REMEDIAL WORK ☐ PLUG AND ABANDON ☐
 TEMPORARILY ABANDON ☐ CHANGE PLANS ☐
 PULL OR ALTER CASING ☐ MULTIPLE COMPL ☐
 DOWNHOLE COMMINGLE ☐
 CLOSED-LOOP SYSTEM ☐
 OTHER: ☐

SUBSEQUENT REPORT OF:

REMEDIAL WORK ☐ ALTERING CASING ☐
 COMMENCE DRILLING OPNS. ☐ P AND A ☒
 CASING/CEMENT JOB ☐
 OTHER: ☐

13. Describe proposed or completed operations. (Clearly state all pertinent details, and give pertinent dates, including estimated date of starting any proposed work). SEE RULE 19.15.7.14 NMAC. For Multiple Completions: Attach wellbore diagram of proposed completion or recompletion.

NMOCD plugged well according to attached EOW report and plugged WBD.

Accepted for record – NMOCD

JRH 05/03/2023

Spud Date:

Rig Release Date:

I hereby certify that the information above is true and complete to the best of my knowledge and belief.

SIGNATURE Drake McCulloch TITLE Authorized Representative DATE 5/23/22

Type or print name Drake McCulloch E-mail address: drake@dwsrigs.com PHONE: 505 320 1180

For State Use Only

APPROVED BY: _____ TITLE _____ DATE _____

Conditions of Approval (if any):

Cano Petro Inc./NMOCD OWP

Plug And Abandonment End Of Well Report

Cato San Andres Unit #053

330' FSL & 990' FEL, Section 11, T8S, R30E

Chaves County, NM / API 30-005-20293

Work Summary:

- 5/13/22** Made NMOCD P&A operations notifications at 9:00 AM MST.
- 5/16/22** MOL and R/U P&A rig. Prepped location with backhoe. Checked well pressures: Tubing: 0 psi, Casing: 0 psi, Bradenhead: 0 psi. Bled down well. N/D wellhead, N/U BOP and function tested. P/U 4 ½" casing scraper and work string and TIH to a depth of 389' where a tag point was encountered. Attempted to make further progress down wellbore but was unsuccessful. TOOH and L/D casing scraper. P/U mule shoe sub, TIH and tagged up at 389'. Drilled down to 497'. TOOH. Secured and shut-in well for the day.
- 5/17/22** Checked well pressures: Tubing: 0 psi, Casing: 0 psi, Bradenhead: 0 psi. Bled down well. TIH with bit and tagged up at 497'. R/U power swivel. Drilled down to a depth of 976'. Circulated wellbore with fresh water and TOOH. Inspected BHA. TIH to 976'. R/U power swivel. Drilled down to a depth of 1,758'. Circulated wellbore with fresh water. TOOH. Secured and shut-in well for the day.
- 5/18/22** Checked well pressures: Tubing: 0 psi, Casing: 0 psi, Bradenhead: 0 psi. Bled down well. TIH and tagged up at 640'. R/U power swivel. Drilled down to a depth of 2,661' where no further progress could be made down wellbore. R/U cementing services. Pumped plug #1 from 2,661'-2,378' to cover the San Andres perforations and formation top. TOOH. WOC 4 hours. TIH to tag plug #1 but tagged at 2,661' without tagging cement. R/U cementing services. Re-pumped plug #1 from 2,661'-2,222' to cover the San Andres perforations and

formation top. TOOH. WOC overnight. Secured and shut-in well for the day.

5/19/22 Checked well pressures: Tubing: 0 psi, Casing: 0 psi, Bradenhead: 0 psi. Bled down well. TIH and tagged up at 480'. R/U power swivel. Drilled down to a depth of 845' where no more progress could be made down wellbore. Circulated wellbore with fresh water. TOOH. P/U packer, TIH and set at 356'. Attempted to establish injection rate below packer but was unsuccessful. Un-set packer and TOOH. TIH to 813' and tagged up. R/U cementing services. Pumped plug #2 from 813'-441' to cover the Yates and Rustler formation tops. TOOH. WOC 4 hours. TIH and tagged plug #2 top at 780'. R/U cementing services. Re-pumped plug #2 from 780'-376'. TOOH. WOC overnight. Secured and shut-in well for the day.

5/20/22 Checked well pressures: Tubing: 0 psi, Casing: 0 psi, Bradenhead: 0 psi. Bled down well. TIH and tagged plug #2 top at 552'. R/U cementing services. Spotted 9.5 ppg mud spacer from 552'-346'. TOOH. R/U wireline services. RIH and perforated squeeze holes at 346'. R/U cementing services. Successfully established circulation down 4 1/2" production casing through perforations at 346' and back around and out Bradenhead valve at surface with 6 bbls of fresh water. Successfully circulated cement down 4 1/2" production casing through perforations at 346' and back around and out Bradenhead valve at surface. N/D BOP, N/U wellhead. R/D and MOL.

5/23/22 Checked well pressures: Tubing: 0 psi, Casing: 0 psi, Bradenhead: 0 psi. Bled down well. Dug-out wellhead with backhoe. Performed wellhead cut-off. Cement was at surface in the 8-5/8" surface casing annulus. Ran weighted tally tape down 4 1/2" production casing and tagged cement 37' down. Ran 3/4" poly pipe down 4 1/2" production casing to 37'. R/U cementing services. Topped-off well with 10 sx of cement. Installed subsurface P&A marker per NMOC regulations. Photographed the P&A marker in place and recorded its location via GPS coordinates. Back filled P&A marker. R/D and MOL.

Plug Summary:

Plug #1:(San Andres Perforations and Formation Top 2,661'-2,222', 44 Sacks Type III Cement(Re-pumped 25 sx))

Mixed 44 sx Type III cement and spotted a balanced plug to cover the San Andres perforations and formation top. Re-pumped 25 sx Type III.

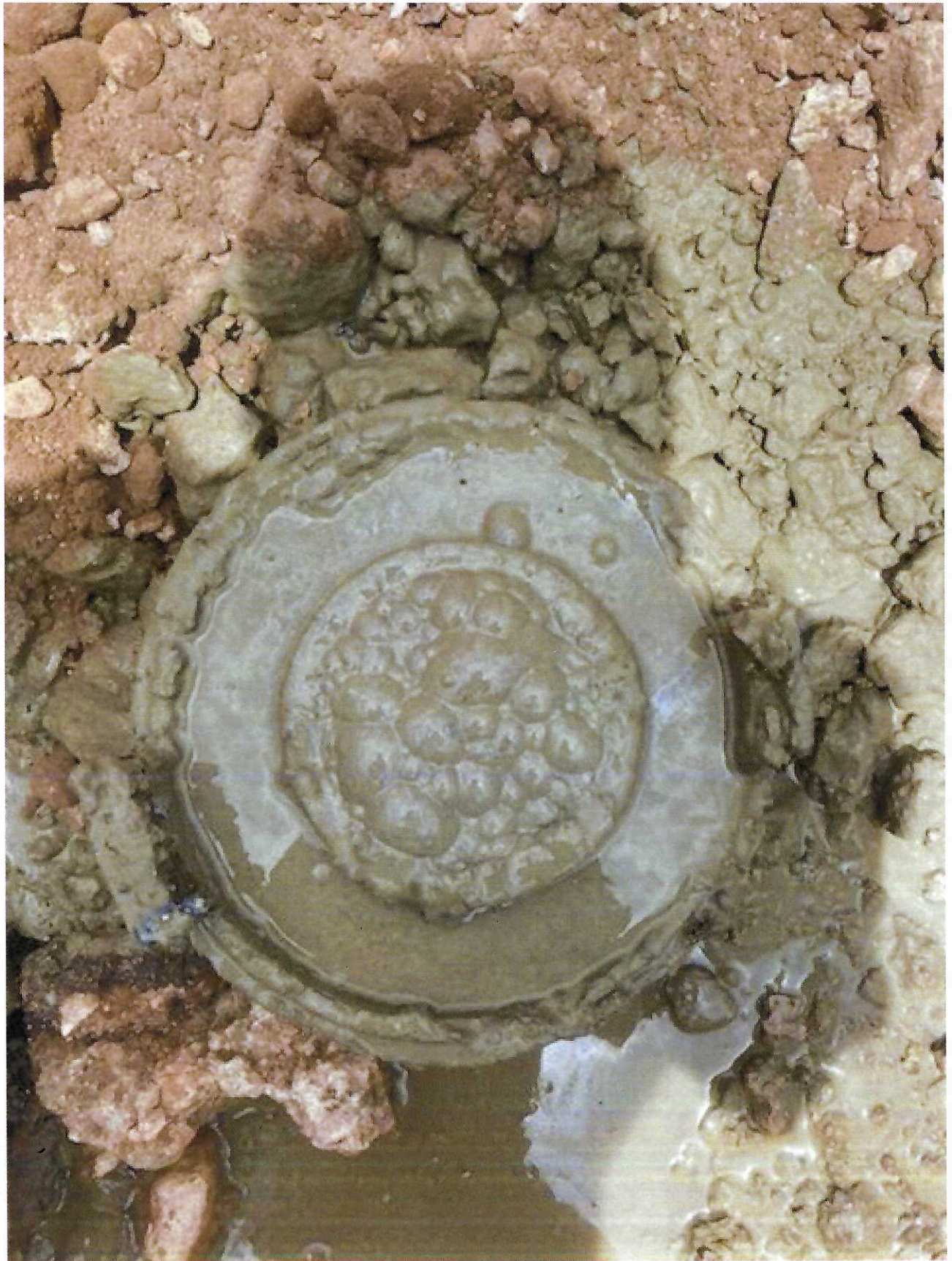
Plug #2:(Yates and Rustler Formation Tops 813'-552', 50 Sacks Type III Cement(Re-pumped 25 sx))

Mixed 50 sx Type III cement and spotted a balanced plug to cover the Yates and Rustler formation tops. Re-pumped 25 sx Type III

Plug #3: (Surface Casing Shoe 346'-Surface, 143 Sacks Type III Cement(10 sx for Top-Off))

RIH and perforated squeeze holes at 346'. R/U cementing services. Successfully established circulation down 4 ½" production casing through perforations at 346' and back around and out Bradenhead valve at surface with 6 bbls of fresh water. Successfully circulated cement down 4 ½" production casing through perforations at 346' and back around and out Bradenhead valve at surface. N/D BOP, N/U wellhead. R/D and MOL. Dug-out wellhead with backhoe. Performed wellhead cut-off. Cement was at surface in the 8-5/8" surface casing annulus. Ran weighted tally tape down 4 ½" production casing and tagged cement 37' down. Ran ¾" poly pipe down 4 ½" production casing to 37'. R/U cementing services. Topped-off well with 10 sx of cement. Installed subsurface P&A marker per NMOCD regulations. Photographed the P&A marker in place and recorded its location via GPS coordinates. Back filled P&A marker. R/D and MOL.





Verizon LTE 1:14 PM



0° N

33°37'41" N 103°50'41" W

Elida, NM

4160 ft Elevation

End of Well Wellbore Diagram

Cato San Andres Unit #053

API #: 30-005-20293

Chaves County, New Mexico

Plug 3

346 feet - Surface

346 foot plug

143 sacks of Type III Cement

10 sacks of Type III Top Out

Plug 2

813 feet - 552 feet

261 foot plug

50 sack of Type III Cement

Re-pumped 25 sks of Type III

Plug 1

2661 feet - 2222 feet

439 foot plug

44 sacks of Type III Cement

Re-pumped 25 sks of Type III

Perforations

3520 feet - 3634 feet

Surface Casing

8.625" 28# @ 296 ft

Formation

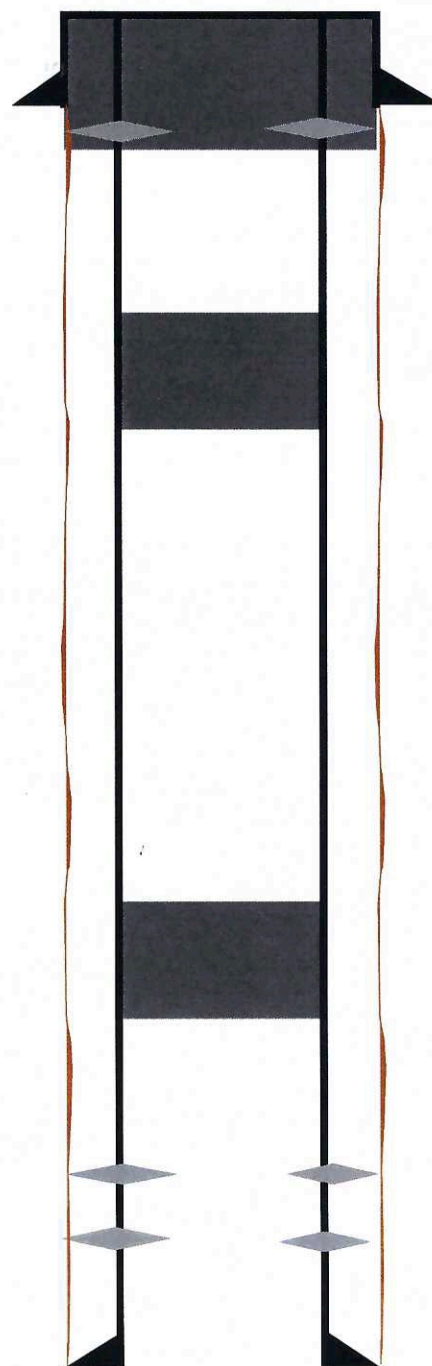
Rustler - 1072 ft

Yates - 1545 ft

San Andres - 3470 ft

Production Casing

4.5" 9.5# @ 3665 ft



District I
1625 N. French Dr., Hobbs, NM 88240
Phone:(575) 393-6161 Fax:(575) 393-0720
District II
811 S. First St., Artesia, NM 88210
Phone:(575) 748-1283 Fax:(575) 748-9720
District III
1000 Rio Brazos Rd., Aztec, NM 87410
Phone:(505) 334-6178 Fax:(505) 334-6170
District IV
1220 S. St Francis Dr., Santa Fe, NM 87505
Phone:(505) 476-3470 Fax:(505) 476-3462

State of New Mexico
Energy, Minerals and Natural Resources
Oil Conservation Division
1220 S. St Francis Dr.
Santa Fe, NM 87505

CONDITIONS

Action 110446

CONDITIONS

Operator: J.A. Drake Well Service Inc. 607 W Pinon Farmington, NM 87401	OGRID: 330485
	Action Number: 110446
	Action Type: [C-103] Sub. Plugging (C-103P)

CONDITIONS

Created By	Condition	Condition Date
john.harrison	None	5/3/2023