

Office  
 District I – (575) 393-6161  
 1625 N. French Dr., Hobbs, NM 88240  
 District II – (575) 748-1283  
 811 S. First St., Artesia, NM 88210  
 District III – (505) 334-6178  
 1000 Rio Brazos Rd., Aztec, NM 87410  
 District IV – (505) 476-3460  
 1220 S. St. Francis Dr., Santa Fe, NM  
 87505

Energy, Minerals and Natural Resources

Revised July 18, 2013

**OIL CONSERVATION DIVISION**  
 1220 South St. Francis Dr.  
 Santa Fe, NM 87505

WELL API NO.

30-005-60697

5. Indicate Type of Lease

STATE ☒ FEE ☐

6. State Oil &amp; Gas Lease No.

7. Lease Name or Unit Agreement Name

Twin Lakes San Andres Unit

8. Well Number 048

9. OGRID Number

300825

10. Pool name or Wildcat

Cato; San Andres

**SUNDRY NOTICES AND REPORTS ON WELLS**

(DO NOT USE THIS FORM FOR PROPOSALS TO DRILL OR TO DEEPEN OR PLUG BACK TO A DIFFERENT RESERVOIR. USE "APPLICATION FOR PERMIT" (FORM C-101) FOR SUCH PROPOSALS.)

1. Type of Well: Oil Well ☒ Gas Well ☐ Other ☐

2. Name of Operator

Blue Sky NM Inc.

3. Address of Operator

7941 Katy Freeway Suite 522 Houston, TX 77024

4. Well Location

Unit Letter M 570 feet from the S line and 330 feet from the W line

Section 31 Township 08S Range 29E NMPM County Chaves

11. Elevation (Show whether DR, RKB, RT, GR, etc.)

3980

**12. Check Appropriate Box to Indicate Nature of Notice, Report or Other Data****NOTICE OF INTENTION TO:**PERFORM REMEDIAL WORK ☐ PLUG AND ABANDON ☐TEMPORARILY ABANDON ☐ CHANGE PLANS ☐PULL OR ALTER CASING ☐ MULTIPLE COMPL ☐DOWNHOLE COMMINGLE ☐CLOSED-LOOP SYSTEM ☐OTHER: ☐**SUBSEQUENT REPORT OF:**REMEDIAL WORK ☐ ALTERING CASING ☐COMMENCE DRILLING OPNS. ☐ P AND A ☒CASING/CEMENT JOB ☐OTHER: ☐

13. Describe proposed or completed operations. (Clearly state all pertinent details, and give pertinent dates, including estimated date of starting any proposed work). SEE RULE 19.15.7.14 NMAC. For Multiple Completions: Attach wellbore diagram of proposed completion or recompletion.

NMOCD has plugged well according to attached EOW files and well bore diagram.

Spud Date:

Rig Release Date:

Accepted for record – NMOCD

JRH 05/03/2023

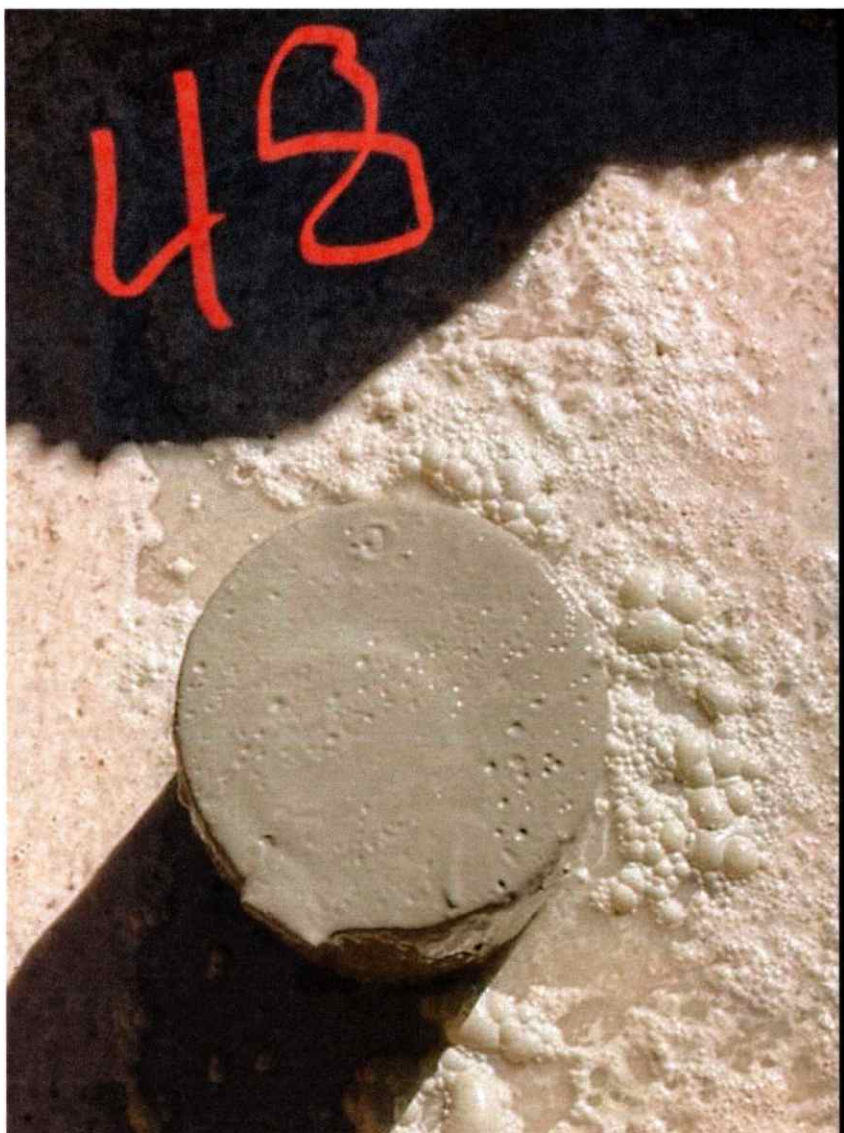
I hereby certify that the information above is true and complete to the best of my knowledge and belief.

SIGNATURE \_\_\_\_\_ TITLE Authorized Representative \_\_\_\_\_ DATE 10/31/22

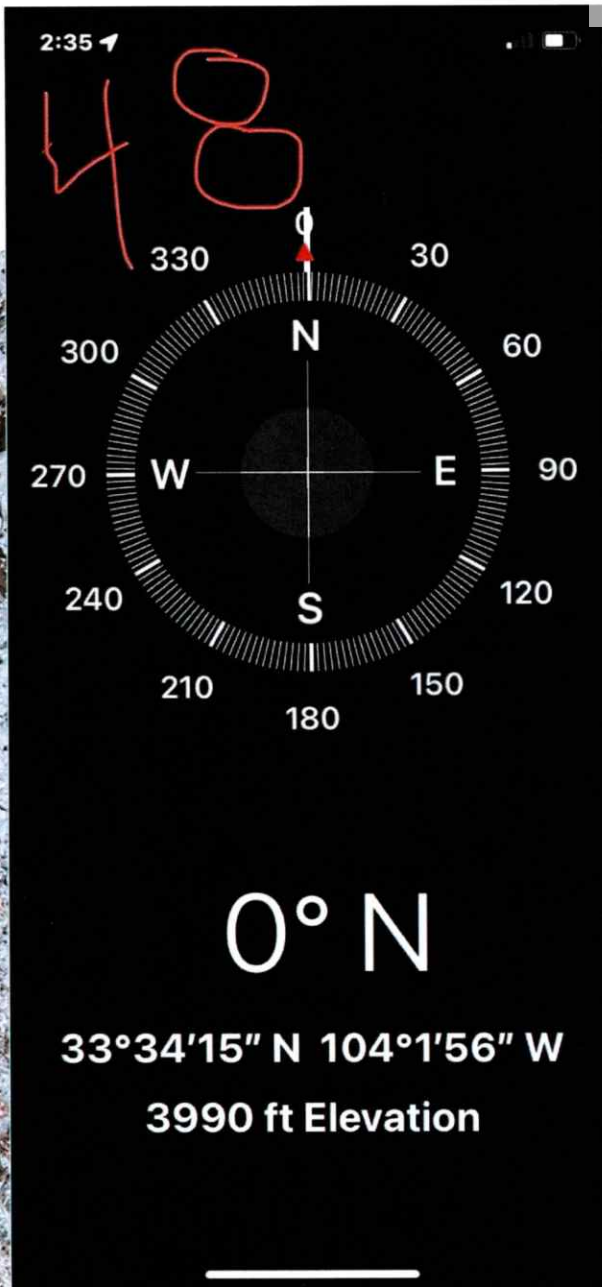
Type or print name Drake McCulloch \_\_\_\_\_ E-mail address: [drake@dwsrigs.com](mailto:drake@dwsrigs.com) \_\_\_\_\_ PHONE: 505 320 1180**For State Use Only**

APPROVED BY: \_\_\_\_\_ TITLE \_\_\_\_\_ DATE \_\_\_\_\_

Conditions of Approval (if any): \_\_\_\_\_







## **Blue Sky NM, INC.**

### **Plug And Abandonment End Of Well Report**

#### **Twin Lakes San Andres Unit #048**

570' FSL & 330' FWL, Section 31, 08S, 29E

Chaves County, NM / API 30-005-60697

#### **Work Summary:**

- 9/17/22** Made BLM and NMOCD P&A operations notifications at 9:00 AM MST.
- 9/18/22** Arrived on location and held safety meeting. R/U P&A rig. Checked well pressures: Tubing 0 psi, Casing: 0 psi, Bradenhead: 0 psi. Bled down well. N/D wellhead. N/U BOP and function tested. P/U 4.5" casing scraper. TIH to 2,664'. TOOH and L/D 4.5" casing scraper. P/U 4.5" CR. TIH and set CR at 2614'. Attempted to pressure test casing, but casing failed. R/U cementing services and pumped plug #1 from 2614' to 1934' to cover the San Andres formation top and perforations. L/D 22 joints and TOOH. WOC overnight. Secured and shut in well for the day.
- 9/19/22** Arrived on location and held safety meeting. Checked well pressures: Tubing 0 psi, Casing: 0 psi, Bradenhead: 0 psi. Bled down well. TIH and tagged top of plug #1 at 1850'. POOH. Successfully pressure tested to 800 PSI. R/U wireline services. RIH and perforated at 1540'. POOH and R/D wireline services. P/U packer and TIH. Set packer at 1530'. Reset packer and successfully established an injection rate. Pumped plug #2 from 1540' to 1100' to cover the Queen formation top. R/D cementing services. TOOH. WOC 4 hours. TIH and tagged to of plug #2 at 1290. R/U cementing services and continued pumping plug #2 to 1100'. R/D cementing services. TOOH. WOC overnight. Secured and shut in well for the day.
- 9/20/22** Arrived on location and held safety meeting. Checked well pressures: Tubing 0 psi, Casing: 0 psi, Bradenhead: 0 psi. Bled down well. TIH and tagged top of plug #2 at 1100'. Attempted to pressure



test but was unsuccessful. R/U wireline services. RIH and perforated at 820'. POOH and R/D wireline services. P/U packer and TIH. Set packer at 347'. Successfully established circulation rate. Pumped plug #3 from 820' to 347' to cover the Yates formation top. TOOH and WOC. TIH and tagged top of plug #3 at 355'. TOOH. R/U wire line. RIH and perforated at 170'. POOH. TIH and R/U cementing services. Unable to establish injection rate. Began pumping plug #4 from 170' with 4.5 sx. TOOH. R/U wireline services. RIH and perforate at 100'. POOH. R/D wireline. TIH and successfully establish injection rate. R/U cementing services and continue pumping plug #4 from 170' to surface to cover casing shoe. WOC overnight. Secured and shut in well.

**10/21/22** Arrived on location and held safety meeting. Checked well pressures: Tubing 0 psi, Casing: 0 psi, Bradenhead: 0 psi. Bled down well. TIH and tag the top of plug #4 at 96'. Attempted to establish circulation but was unsuccessful. TOOH. R/U wireline. TIH and perforated at 75'. POOH. Attempted to establish circulation but received no returns. R/U cementing services and continued pumping plug #4 from 96' to surface. R/D cementing services, nipple down floor, bop, and rig. MOL.

**10/19/22** Arrived on location and held safety meeting. Used backhoe to safely expose wellhead. R/U water jet wellhead cutter. Preformed water jet cutoff. Removed old wellhead. Tagged cement at 2' in in 4.5" casing and at 31' in annulus. R/U cementing services. Topped off 4.5" with 1 sx and topped off annulus with 6 sx. Welder attached marker per NMOCD regulations.

### **Plug Summary:**

#### **Plug #1: (San Andres Perforations and Formation Top, 2,614'-1,850', 46 Sacks Type III Cement)**

P/U 4.5" CR. TIH and set CR at 2614'. Attempted to pressure test casing, but casing failed. R/U cementing services and pumped plug #1 from 2614' to 1934' to cover the San Andres formation top and perforations. L/D 22 joints and TOOH. WOC overnight. TIH and tagged top of plug #1 at 1850'.

#### **Plug #2: (Queen Formation Top 1,540-1100', 106 Sacks Type III Cement)**

R/U wireline services. RIH and perforated at 1540'. POOH and R/D wireline services. P/U packer and TIH. Set packer at 1530'. Reset packer and successfully established an injection rate. Pumped plug #2 from 1540' to 1100' to cover the Queen formation top. R/D cementing services. TOOH. WOC 4 hours. TIH and tagged top of plug

#2 at 1290'. R/U cementing services and continued pumping plug #2 to 1100'. R/D cementing services. TOOH. WOC overnight. TIH and tagged top of plug #2 at 1100'.

**Plug #3: (Yates Formation Top, 820' to 355', 93 Sacks Type III Cement)**

R/U wireline services. RIH and perforated at 820'. POOH and R/D wireline services. P/U packer and TIH. Set packer at 347'. Successfully established circulation rate. Pumped plug #3 from 820' to 347' to cover the Yates formation top. TOOH and WOC. TIH and tagged top of plug #3 at 355'.

**Plug #4: (Surface Casing Shoe, 170' to Surface', 43 Sacks Type III Cement [7 sx for top off])**

R/U wire line. RIH and perforated at 170'. POOH. TIH and R/U cementing services. Unable to establish injection rate. Began pumping plug #4 from 170' with 4.5 sx. TOOH. R/U wireline services. RIH and perforate at 100'. POOH. R/D wireline. TIH and successfully establish injection rate. R/U cementing services and continue pumping plug #4 from 170' to surface to cover casing shoe. WOC overnight. TIH and tag the top of plug #4 at 96'. Attempted to establish circulation but was unsuccessful. TOOH. R/U wireline. TIH and perforated at 75'. POOH. Attempted to establish circulation but received no returns. R/U cementing services and continued pumping plug #4 from 96' to surface. R/U water jet wellhead cutter. Performed water jet cutoff. Removed old wellhead. Tagged cement at 2' in in 4.5" casing and at 31' in annulus. R/U cementing services. Topped off 4.5" with 1 sx and topped off annulus with 6 sx. Welder attached marker per NMOCD regulations.

## Completed Wellbore Diagram

Blue Sky NM Inc.  
Twin Lakes San Andres Unit #048  
API: 30-005-60697  
Chaves County, New Mexico

### Surface Casing

8.625" 20# @ 120 ft  
OH: 12.5'

### Plug 4

170 feet - surface  
170 foot plug  
47 Sacks of Type III Cement

### Plug 3

820 feet - 355 feet  
465 foot plug  
93 Sacks of Type III Cement

### Plug 2

1540 feet - 1100 feet  
440 foot plug  
106 Sacks of Type III Cement

### Plug 1

2614 feet - 1850 feet  
764 foot plug  
46 sacks of Type III Cement

### Perforations

2664 feet - 2698 feet

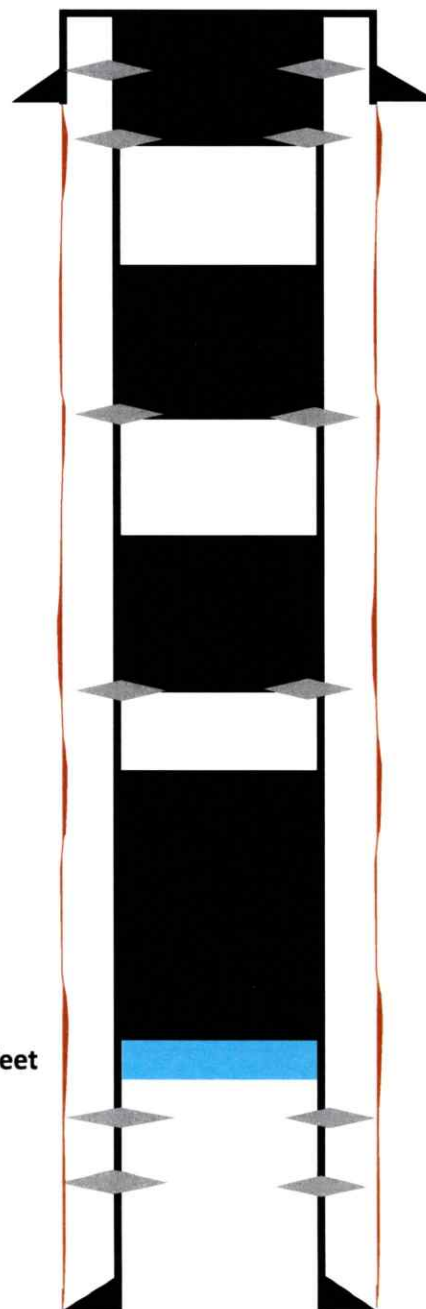
### Formation

Yates - 772 feet  
Queen - 1490 feet  
San Andres - 2034 feet

Retainer @ 2614 feet

### Production Casing

4.5" 9.5# @ 2799 feet  
OH: 7.875"



**District I**  
1625 N. French Dr., Hobbs, NM 88240  
Phone:(575) 393-6161 Fax:(575) 393-0720  
**District II**  
811 S. First St., Artesia, NM 88210  
Phone:(575) 748-1283 Fax:(575) 748-9720  
**District III**  
1000 Rio Brazos Rd., Aztec, NM 87410  
Phone:(505) 334-6178 Fax:(505) 334-6170  
**District IV**  
1220 S. St Francis Dr., Santa Fe, NM 87505  
Phone:(505) 476-3470 Fax:(505) 476-3462

State of New Mexico  
Energy, Minerals and Natural Resources  
Oil Conservation Division  
1220 S. St Francis Dr.  
Santa Fe, NM 87505

CONDITIONS

Action 158209

CONDITIONS

|  |  |
|--|--|
| Operator:<br>J.A. Drake Well Service Inc.<br>607 W Pinon<br>Farmington, NM 87401 | OGRID:<br>330485                               |
|  | Action Number:<br>158209                       |
|  | Action Type:<br>[C-103] Sub. Plugging (C-103P) |

CONDITIONS

| Created By    | Condition | Condition Date |
|---------------|-----------|----------------|
| john.harrison | None      | 5/3/2023       |