

Submit 1 Copy To Appropriate District Office
 District I - (575) 393-6161
 1625 N. French Dr., Hobbs, NM 88240
 District II - (575) 748-1283
 811 S. First St., Artesia, NM 88210
 District III - (505) 334-6178
 1000 Rio Brazos Rd., Aztec, NM 87410
 District IV - (505) 476-3460
 1220 S. St. Francis Dr., Santa Fe, NM 87505

State of New Mexico
 Energy, Minerals and Natural Resources

OIL CONSERVATION DIVISION
 1220 South St. Francis Dr.
 Santa Fe, NM 87505

Form C-103
 Revised July 18, 2013

WELL API NO.
 30-015-23303

5. Indicate Type of Lease
 STATE ☐ FEE ☒

6. State Oil & Gas Lease No.
 NMNM911

7. Lease Name or Unit Agreement Name
 El Paso Federal

8. Well Number 5

9. OGRID Number
 151416

10. Pool name or Wildcat
 Burton Flat;Morrow(Pro Gas)

SUNDRY NOTICES AND REPORTS ON WELLS
 (DO NOT USE THIS FORM FOR PROPOSALS TO DRILL OR TO DEEPEN OR PLUG BACK TO A DIFFERENT RESERVOIR. USE "APPLICATION FOR PERMIT" (FORM C-101) FOR SUCH PROPOSALS.)

1. Type of Well: Oil Well ☐ Gas Well ☒ Other

2. Name of Operator
 Fasken Oil and Ranch, Ltd

3. Address of Operator
 6101 Holiday Hill Road Midland, TX 79707

4. Well Location
 Unit Letter I : 2684 feet from the North line and 660 feet from the West line
 Section 01 Township 21S Range 26E NMPM County Eddy

11. Elevation (Show whether DR, RKB, RT, GR, etc.)

12. Check Appropriate Box to Indicate Nature of Notice, Report or Other Data

NOTICE OF INTENTION TO:

PERFORM REMEDIAL WORK ☐ PLUG AND ABANDON ☒
 TEMPORARILY ABANDON ☐ CHANGE PLANS ☐
 PULL OR ALTER CASING ☐ MULTIPLE COMPL ☐
 DOWNHOLE COMMINGLE ☐
 CLOSED-LOOP SYSTEM ☐
 OTHER: ☐

SUBSEQUENT REPORT OF:

REMEDIAL WORK ☐ ALTERING CASING ☐
 COMMENCE DRILLING OPNS. ☐ P AND A ☒
 CASING/CEMENT JOB ☐
 OTHER: ☐

13. Describe proposed or completed operations. (Clearly state all pertinent details, and give pertinent dates, including estimated date of starting any proposed work). SEE RULE 19.15.7.14 NMAC. For Multiple Completions: Attach wellbore diagram of proposed completion or recompletion.

See attached completed plug and abandon procedure and WBD

Spud Date:

Rig Release Date:

I hereby certify that the information above is true and complete to the best of my knowledge and belief.

SIGNATURE Viola Vasquez TITLE Regulatory Analyst DATE 04-03-2023

Type or print name Viola Vasquez E-mail address: violav@forl.com PHONE: 432-687-1777

For State Use Only

APPROVED BY: [Signature] TITLE Petroleum Specialist DATE 05/08/2023

Conditions of Approval (if any):

Fasken Oil and Ranch, LTD.

Combined Daily Operations Report

8/1/2022 thru 11/6/2022

Page 1

Printed 11/9/2022

El Paso Federal # 5

Well ID: EL0505

2684 FNL & 660 FWL Section 1, Township T21S, Range R26E

Eddy Co., NM

Sep 6, 2022 Tuesday

SITP-650 psi, SICP-650 psi, SISP-0 psi. Notified BLM. McNabb vacuum truck loaded tank with 200 bbw and 240 bfw. Bled down tubing and casing pressure to open top tank. RUPU Permian 5 Rig No.29 and plugging equipment. Set TWS catwalk and 2 pipe racks. SWI and SDON. (RG)

AFE #: 4226

Daily Cost:

Total Daily Cost:

Total Cum. Cost:

Sep 7, 2022 Wednesday

SITP-650 psi, SICP-650 psi, SISP-0 psi. Notified BLM. McNabb vacuum truck loaded tank with 200 bbw and 240 bfw tank. Bled down tubing and casing pressure to open top tank. RUPU Permian 5 Rig No. 29 and plugged equipment. Set TWS catwalk and 2 set pipe racks. SWI and SDON. (RG)

AFE #: 4226

Daily Cost:

Total Daily Cost:

Total Cum. Cost:

Sep 8, 2022 Thursday

SITP-50 psi, SICP-50 psi, SISCIP-0 psi. Bled down pressure to open top tank. POW with remaining 123 jts 2-3/8" EUE 8rd N80 bare tubing, LD 4-1/2" x 2 3/8" TOSSD and 4-1/2" Arrowset IX packer with 2-3/8" x 4' EUE 8rd N80 tubing sub with 2-3/8" wireline entry guide. RU Permian 5 Wireline, RIW with 3.625" gauge ring and junk basket to 9775'. Located casing collar @ 9736'. Updated BLM and received approval to proceed with job. RIW with 4-1/2" CIBP, set @ 9748', POW and RDWL. RU Hydrostatic TT. RIW with 2-3/8" SN and 300 jts of 2 3/8" EUE 8rd N80 bare tubing. Found 3 jts with galled threads and RD Hydrostatic. Ordered 15 jts to be delivered in the morning, SWI and SDON. (RG)

AFE #: 4226

Daily Cost:

Total Daily Cost:

Total Cum. Cost:

Sep 9, 2022 Friday

SITP-0 psi, SICP-0 psi, SISP-0 psi. Received and unloaded 15 jts of 2-3/8" 4.7# L80 EUE yellow band tubing. RIW with 306 jts and tagged CIBP at 9748'. Circulated with 160 bbls of 10# mud laden brine water, tested casing to 520 psi for 10 mins and bled down pressure. Spotted 25 sx (5.3 bbls) of Class "H" 15.6 ppg, 1.18 yield cement and displaced with 36.0 bbls of 10# mud laden brine water from 9748' - 9410'. Witnessed by BLM. POW with 60 jts of work string and WOC 4 hrs. RIW with 54 jts of 2 3/8" tubing and tagged cement @ 9556'. Cement not set up, notified BLM. POW with 6 jts to 9366' and flushed tubing with 2 bbls of 10# mud laden bw. Well circulated and POW with 48 jts of work string. Let cement set up over weekend with EOT @ 7778'. SWI and SDON. (RG)

AFE #: 4226

Daily Cost:

Total Daily Cost:

Total Cum. Cost:

Sep 10, 2022 Saturday

No activity. (RG)

AFE #: 4226

Daily Cost:

Total Daily Cost:

Total Cum. Cost:

Fasken Oil and Ranch, LTD.**Combined Daily Operations Report**

8/1/2022 thru 11/6/2022

Page 2

Printed 11/9/2022

Sep 11, 2022 Sunday

No activity. (RG)

AFE #: 4226

Daily Cost:

Total Daily Cost:

Total Cum. Cost:

Sep 12, 2022 Monday

SITP-0 psi. SICP-0 psi, SISP-0 psi. Crew arrived at 10:30 am Mountain time due to safety meeting. RIW with 303 jts 2-3/8" tubing and tagged cement at 9630'. BLM witnessed and approved tag depth. POW and LD 42 jts of work string to 8668'. Mixed and spotted 25 sacks (5.3 bbls) of Class "H" 15.6 ppg, 1.18 yield cement and displaced with 32.2 bbls of 10# mud laden brine water from 8330' - 8668'. POW with 60 jts of work string with EOT at 6762'. WOC to tag in the morning. SWI and SDON. (RG)

AFE #: 4226

Daily Cost:

Total Daily Cost:

Total Cum. Cost:

Sep 13, 2022 Tuesday

SITP-0 psi. SICP-0 psi, SISP-0 psi. RIW with 52 jts of 2 3/8" tubing and tagged TOC @ 8471'. Witnessed by BLM and called cement tag good. POW and LD with 45 jts of workstring with EOT @ 7048'. Mixed and spotted 25 sx (5.3 bbls) of Class "C" 14.8 ppg and 1.32 yield cement. Displaced with 25.6 bbls of 10# mud laden brine water from 6670' - 7048'. POW with 60 jts of workstring and shut in tubing and casing. WOC 4 hrs to tag. RIW with 43 jts 2-3/8" tubing and tagged cement @ 6762'. Witnessed by BLM and called cement tag good. POW with 70 jts workstring tubing to 4508'. Mixed and spotted 25 sx (5.3 bbls) of Class "C" 14.8 ppg, 1.32 yield cement and displaced with 15.8 bbls of 10# mud laden brine water from 4130' - 4508'. POW with 60 jts of workstring. WOC to tag in the morning. SWI and SDON. (RG)

AFE #: 4226

Daily Cost:

Total Daily Cost:

Total Cum. Cost:

Sep 14, 2022 Wednesday

SITP-0 psi. SICP-0 psi, SISP-0 psi. Crew arrived on location at 8:00 am Mountain time. RIW with 21 jts 2-3/8" tubing and tagged cement @ 4222'. Witnessed by BLM and called cement tag good. POW and LD with 132 jts 2-3/8" work string. RUWL and RIW with 3-1/8" perf gun and shot 4 squeeze holes at 3054'. POW with wireline and found all shots fired. RIW with AD-1 tension packer, 80 jts 2-3/8" 4.7# EUE N80 tubing and set packer @ 2541'. Broke circulation from intermediate casing with 10 bbls of 10# mud laden bw at 2 bpm with 150 psi. Squeezed perfs with 30 sx (7.1 bbls) of Class "C" 14.8 ppg, 1.32 yield cement with 2% calcium chloride into perfs at 3054' and displaced cement to 2900' with 15.3 bbls of 10# mud laden bw. Shut in tubing and casing with 550 psi. WOC and SDON. (RG)

AFE #: 4226

Daily Cost:

Total Daily Cost:

Total Cum. Cost:

Fasken Oil and Ranch, LTD.**Combined Daily Operations Report**

Page 3

8/1/2022 thru 11/6/2022

Printed 11/9/2022

Sep 15, 2022 Thursday

SITP - 50 psi, SICP - 0 psi, SIIP - 50 psi. SISP - 0 psi. Bled down, RIW with 9 jts of 2 3/8" tubing and tagged cement 2825'. Witnessed by BLM, cement tag OK. POW LD with 24 jts and stand back 74 jts of workstring. RU wireline, RIW with 3 1/8" gun and shot 4 squeeze holes at 2397'. Surface casing on vacuum and intermediate casing slight blow. POW with wireline, RIW with AD-1 Tension Packer and 58 jts of 2 3/8" 4.7# EUE N80 tubing. Set packer at 1,843'. Broke circ with Intermediate casing with 1 bbls of 10# mud laden brine water at 150 psi at 2 bpm. Squeezed perfs with 35 sx (8.2 bbls) of Class "C" 14.8 ppg and 1.32 yield cement with 2% calcium chloride into perfs at 2,397'. Displaced cement to 2,273' with 13.7 bbls of 10# mud laden brine water. Shut in tubing and casing with 500 psi. WOC, ordered more Class "C" cement and SDON. (RG)

AFE #: 4226

Daily Cost:

Total Daily Cost:

Total Cum. Cost: !

Sep 16, 2022 Friday

SITP-50 psi, SICP-0 psi, SIIP-50 psi, SISP-0 psi. Bled down well. RIW w/ 10 jts 2-3/8" tubing and tagged cement @2169'. Witnessed by Kent Caffall (575-361-0063) w/ BLM and called cement tag good. POW and LD w/ 74 jts of workstring. RU wireline, RIW w/ 3-1/8" gun and shot 4 squeeze holes at 450'. POW w/ wireline and found all shots fired. ND BOP and NU 7 1/16" 3k flange. Attempted to circ down 4-1/2" out 13 3/8" casing w/ 8 5/8" shut in and pressured up 900 psi. Bled down pressure and loaded surface casing w/ 4 bbls. Attempted to pump down surface casing and pressured up 1000 psi, held for 5 mins w/ 0 pressure loss. Bled down pressure, mixed and circulated w/ 120 sx of Class "C" 14.8 ppg, 1.32 yield cement from 450' to surface on 4-1/2" production and 8-5/8" intermediate casing. Shut in and WOC 2 hrs. Found cement to surface and RDPU and plugging equipment. Well is plugged and awaiting cutoff date. (RG)

AFE #: 4226

Daily Cost:

Total Daily Cost:

Total Cum. Cost: --

Sep 23, 2022 Friday

Called and notified New Mexico BLM and informed them of days plans. BCM backhoe and welder arrived on location and dug out wellhead and guy wire anchors. Welder cut off wellhead, welded plate onto casing, installed 1" x 2000 psi valve on top of plate, closed valve and removed handle. Filled bottle with grease and placed over valve. Backhoe backfilled hole and covered casing. Removed mast anchors and back dug location. Sent 5K wellhead and 5K flange to Downing for cleaning and inspection. WELL IS PLUGGED AND ABANDONED.

AFE #: 4226

Daily Cost:

Total Daily Cost:

Total Cum. Cost:

Report Based On:

Date Range: 8/1/2022 through 11/6/2022

Wells selected based on the following Report Menu selections:

Wells = El Paso Federal # 5.

Well: El Paso Federal No. 5

Operator: Fasken Oil and Ranch, Ltd. [Tops](#)Location: 2684' FNL and 660' FWL
Sec 1, T21S, R26E
Eddy County, NM

Compl.: 10/15/1980

API #: 30-015-23303

TD: 11,400'

PBSD: 9,733

Casing: 13-3/8" 48# H-40 @ 400' KB [Delwre sd 2347'](#)

w/350sxHowcoLite w/1/4#flocele+2%CaCl2(12.7 ppg,

1.84cuft/sk)+100sx"C"+2% CaCl2(14.8 ppg, 1.32cuft/sk)

TOC surf, Circ 122 sx [BS Lime 4433'](#)**8-5/8" 24#J55&32#K55 @ 3004.00' KB**

w/1000sxHowcoLite w/1/2#flocele+2%CaCl2(12.7ppg,

1.84cf/sk)+300sx Thixset w/1/4#flocele+2%CaCl2(14.1ppg, 1.5cf/sk)

+200sx"C"+w/2%CaCl2(14.8ppg, 1.32cf/sk) [1BS sand 5485](#)

TOC Surf, 1"8stgs fr1375'w/518sx"C"+w/4%CaCl2

4-1/2" 11.6&13.5# N-80 @ 11,400'

Stg1: 500sx"H"+w/3#kcl+1/4#flocele(15.6ppg, 1.19cf/sk)

+500sx"H"+w/3#kcl(15.6ppg, 1.18cf/sk)

DV tool: 6998', no cement circulated

Stg2: 1400sx"C"50-50 Pozw/2%gel/sk(13.7ppg, 1.36cf/sk)

+500sx"H"+w/3#kcl(15.6ppg, 1.18cf/sk)

TOC 4350' by temp survey [2BS sand 5992](#)[3BS 8056](#)

Plug 1

TAG

[Wlfc 8618](#)

Plug 2

TAG

Plug 3

TAG

Plug 4

TAG

Plug 5

TAG

Plug 6

Surface

Pkr1: 4-1/2" Otis XLB pkr, WL set 10-2-80

10,723.00

Burton Flat, W. (Strawn)

[Strwn 9838](#)

9,798'-9,806' (17h, 2spf)

9,864'-68' (9h, 2spf)

9,881'-86' (11h, 2spf)

9,895'-99' (9h, 2spf)

[Atoka 10078](#)[Morrow Cl 10702](#)

Plug1 10,267'-10,695' w/25sx "H"

CIBP 10,695'

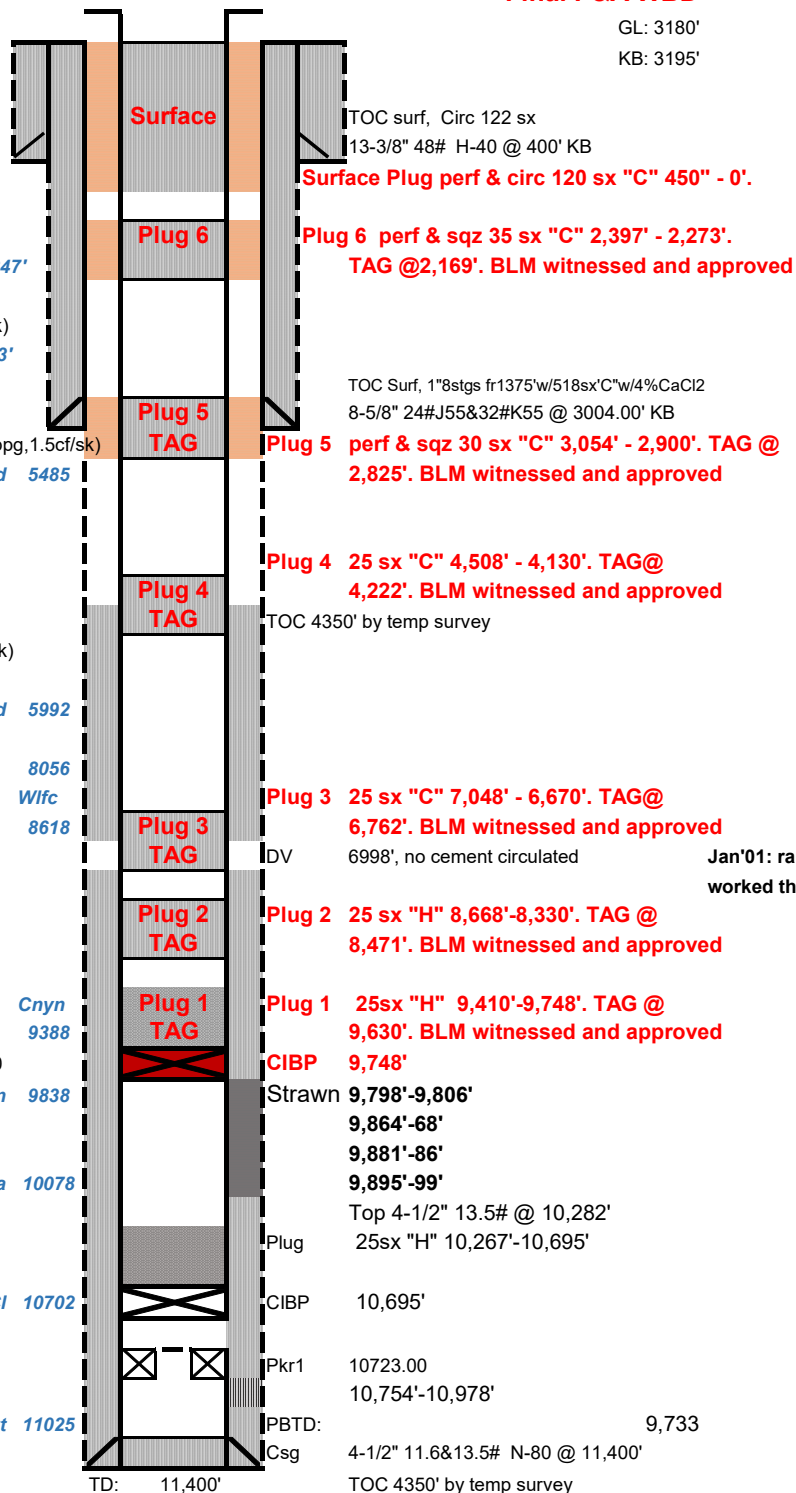
Morrow

10,754'-10,978'

[Barnett 11025](#)

Hole sizes: 17-1/2" to 400'; 12-1/4" to 3000'; 7-7/8" to 11,400'

Status: Shut-in April 2019



Final P&A WBD

Sep-22

GL: 3180'

KB: 3195'

cwb

2-11-21

EP5 wb diagram.xls

District I
1625 N. French Dr., Hobbs, NM 88240
Phone:(575) 393-6161 Fax:(575) 393-0720
District II
811 S. First St., Artesia, NM 88210
Phone:(575) 748-1283 Fax:(575) 748-9720
District III
1000 Rio Brazos Rd., Aztec, NM 87410
Phone:(505) 334-6178 Fax:(505) 334-6170
District IV
1220 S. St Francis Dr., Santa Fe, NM 87505
Phone:(505) 476-3470 Fax:(505) 476-3462

State of New Mexico
Energy, Minerals and Natural Resources
Oil Conservation Division
1220 S. St Francis Dr.
Santa Fe, NM 87505

CONDITIONS

Action 203770

CONDITIONS

Operator: FASKEN OIL & RANCH LTD 6101 Holiday Hill Rd Midland, TX 79707	OGRID: 151416
	Action Number: 203770
	Action Type: [C-103] Sub. Plugging (C-103P)

CONDITIONS

Created By	Condition	Condition Date
john.harrison	None	5/8/2023