

Submit 1 Copy To Appropriate District Office
 District I – (575) 393-6161
 1625 N. French Dr., Hobbs, NM 88240
 District II – (575) 748-1283
 811 S. First St., Artesia, NM 88210
 District III – (505) 334-6178
 1000 Rio Brazos Rd., Aztec, NM 87410
 District IV – (505) 476-3460
 1220 S. St. Francis Dr., Santa Fe, NM 87505

State of New Mexico
 Energy, Minerals and Natural Resources

OIL CONSERVATION DIVISION
 1220 South St. Francis Dr.
 Santa Fe, NM 87505

Form C-103
 Revised July 18, 2013

WELL API NO. 30-025-34197
5. Indicate Type of Lease STATE <input type="checkbox"/> FEE <input checked="" type="checkbox"/>
6. State Oil & Gas Lease No. 29221
7. Lease Name or Unit Agreement Name Watson 6
8. Well Number #001
9. OGRID Number 210091
10. Pool name or Wildcat Upper Permo Penn

SUNDRY NOTICES AND REPORTS ON WELLS (DO NOT USE THIS FORM FOR PROPOSALS TO DRILL OR TO DEEPEN OR PLUG BACK TO A DIFFERENT RESERVOIR. USE "APPLICATION FOR PERMIT" (FORM C-101) FOR SUCH PROPOSALS.)	
1. Type of Well: Oil Well <input type="checkbox"/> Gas Well <input checked="" type="checkbox"/> Other SWD	
2. Name of Operator DKD, LLC	
3. Address of Operator PO Box 682, Tatum, NM 88267	
4. Well Location Unit Letter 2857 : _____ feet from the S _____ line and 1417 feet from the W _____ line Section 6 Township 16 Range 36 NMPM County Lea	
11. Elevation (Show whether DR, RKB, RT, GR, etc.) 3957	

12. Check Appropriate Box to Indicate Nature of Notice, Report or Other Data

NOTICE OF INTENTION TO:		SUBSEQUENT REPORT OF:	
PERFORM REMEDIAL WORK <input type="checkbox"/>	PLUG AND ABANDON <input type="checkbox"/>	REMEDIAL WORK <input type="checkbox"/>	ALTERING CASING <input type="checkbox"/>
TEMPORARILY ABANDON <input type="checkbox"/>	CHANGE PLANS <input type="checkbox"/>	COMMENCE DRILLING OPNS. <input type="checkbox"/>	P AND A <input type="checkbox"/>
PULL OR ALTER CASING <input type="checkbox"/>	MULTIPLE COMPL <input type="checkbox"/>	CASING/CEMENT JOB <input type="checkbox"/>	
DOWNHOLE COMMINGLE <input type="checkbox"/>			
CLOSED-LOOP SYSTEM <input type="checkbox"/>			
OTHER: <input type="checkbox"/>		OTHER: Post-workover Final Report <input checked="" type="checkbox"/>	

13. Describe proposed or completed operations. (Clearly state all pertinent details, and give pertinent dates, including estimated date of starting any proposed work). SEE RULE 19.15.7.14 NMAC. For Multiple Completions: Attach wellbore diagram of proposed completion or recompletion.

See Attached Post-Workover Final Report

Spud Date:

4/12/2023

Rig Release Date:

5/10/2023

I hereby certify that the information above is true and complete to the best of my knowledge and belief.

SIGNATURE Regina Watson TITLE Owner DATE 5/18/2023
 Type or print name Regina Watson E-mail address: dkddisposals@gmail.com PHONE: (575) 398-3490
For State Use Only

APPROVED BY: Kerry Fortner TITLE Compliance Officer A DATE 5/18/23
 Conditions of Approval: _____

Watson 6 #1 SWD

API: 30-025-34197

Page 1

Form C-103 – Work Plan

DKD, LLC – OGRID 210091

Well: Watson 6 #1 SWD API: 30-025-34197

Post-Reporting of Well Workover

4/12/23 - Pulling Unit on location at 9:30 AM. Stand-by for rig mat and BOP. BOP on location at 11:00 AM. Rig mat on location at 11:30 AM. Pulling Unit rigged-up at 12:30 PM. BOP on at 2:30 PM. Start trying to unseat Packer at 3:00 PM. Pulling 100 points. Packer has not unset. Shut down at 5:00 PM. Left 100 points pulled on Pack overnight.

4/13/23 – Crew on location at 6:30 AM. Start pulling 100 points and banging on Packer at 7:00 AM until 8:45 AM. Call Rotary Wire Line (Rotary) to run free point to see where we are stuck. Rotary on-site at 9:30 AM. Run spud inside tubing. Couldn't get past 3,900 ft. Release Rotary at 11:30 AM. Call for swivel from TWS Inc. (TWS) to get torque on Packer. Power swivel on location at 1:00 PM. Start turning and working tubing at 1:45 PM. No movement. Shut down at 4:30 PM.

4/14/23 – Crew and Rotary Wireline on location at 7:00 AM. Run 200-grain shot to back-off the collar. Back-off was successful. Come out of hole with 3852 ft of pipe. Put Port-sub on and run back in hole to do outside shot at 5343 ft. Come out of hole at 7:45 PM. Pipe tallied. Bad pipe found at 2,783 ft.

4/17/23 – Work string arrives on location and is tallied. Going in hole. Rotary on location at 10:15 AM. Tag and screw into tubing at 11:00 AM. Have free tubing movement. Try again to release packer before running cutters. Cut explosives at 10,191 ft. Come out of hole. Stand working string backup. Lay bad pipe down. Shut down at 5:45 PM.

4/18/23 – Tally bad pipe and work string. Start in hole with cut-rite to dress tubing to get fish and jars on old packer. TWS reverse unit for this job. In hole with tools at 2:45 PM. Start milling at 3:00 PM with cut-rite; 3:30 PM fish on. Coming out of hole, rig broke throttle sensor at 6:00 PM. Shut down. Mechanic on the way to throttle sensor.

4/19/23 – Crew here at 7:00 AM. Coming out of hole the packer broke. Wind shut us down at 12:00 PM.

4/20/23 – Crew here at 7:00 AM. Run in hole with Bridge Plug and Test Packer to test casing. In hole at 11:00 AM. Set Bridge Plug to test casing. Test Bridge Plug to 1,000 lbs. Test casing to 500 lbs. Had to pump-up twice, then held 500 lbs. Took 41 bbls to load tubing and 113 bbls to load casing. Coming out of hole with Bridge Plug and test Packer. Out of hole at 5:00 PM.

4/21/23 – Used cut-rite tool on tubing. Started in hole on top of Packer at noon. Start cutting on Packer. Cut to rubbers. Stopped at 5:30 PM. Shut down for the weekend.

4/24/23 – Crew on location at 6:30 AM. Cut on Packer until 9:00 AM. Come out to inspect cut-rite shoe. Had a spring in the shoe holding us up. Started in hole again at 2:00 PM with new cut-rite shoe. On bottom at 5:00 PM. Will start milling tomorrow morning.

4/25/23 – Crew on location at 6:45 AM. Start cut-rite at 7:00 AM. Stop at 1:00 PM. Come out of hole and inspect cut-rite and change over to new cut-rite. Out of hole at 4:30 PM. Cut 20" on body of Packer.

4/26/23 – Crew on location at 6:00 AM. Going in hole at 6:30 AM. Caught Packer part at 9,163 ft. Pushed to bottom. Continue milling, latched on to something then come out of hole. Wind shut us down at 4:30 PM.

4/27/23 – Crew on location at 6:45 AM. Coming out of hole at 7:15 AM. Slow and smooth with something wedged on cut-rite. Out of hole – had nothing. Will run box top and try to screw onto whatever it is. Lost it coming out of hole. Out at 10:45 AM. Go back in with cut-rite shoe. Shutdown at 8:00 PM.

4/28/23 – Wind shut us down – did not work.

4/29 & 4/30/23 – Shut down for weekend.

5/1/23 – Finish going in the hole with shoe and cut on rubbers for the rest of the day. Shut down at 4:30 PM. Think we got all rubbers out.

5/2/23 – Crew on location at 7:00 AM. Cut-rite for 1-1/2 hours. Start out of the hole to change cut-rite. Change cut-rite and go back to cut more. Shut down at 5:00 PM.

5/3/23 – Crew on location at 7:00 AM. Start cutting Packer. Cut Packer for 4 hours. Packer released. Start out of hole with collars. Out at 5:00 PM. Start in hole with Bridge Plug and test Packer to re-check casing to 500 lbs.

5/4/23 – Crew on location at 7:00 AM. Finish running in hole with Bridge Plug and test Packer to test casing. Loaded casing with 87 bbls and pressured up to 540 lbs. Let it set for 40 minutes. Went from 540 lbs to 520 lbs. Start coming of the hole and laying down work string. Shut down at 4:00 PM with 170 joints out.

5/5/23 – Crew on location at 7:00 AM. Finish coming of the hole and laying down work string. Out of hole at 10:00 AM. Crew left at 10:30 AM. Released work string.

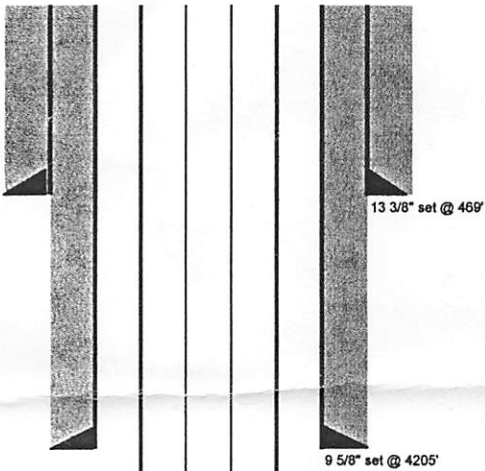
Shut down for the weekend (5/6 – 5/7)

5/8/23 – Fog very thick. Crew on location at 7:00 AM. New pipe arrived at 8:00 AM. Unload pipe and tally new string. Crew left at 11:00 AM.

5/9/23 – Crew on location at 7:00 AM. Run new 5-1/2 X 2-7/8" Arrowset 1X Packer and new string (L-80 poly-lined pipe) in hole. Set Packer at 10,259 ft. Going in hole at 7:45 AM. Run in Packer with Back-off tool. Displace casing with 155 bbls fresh water and packer fluid. Set Packer. Load casing with 55 bbls and pressure-up to 530 lbs.

5/10/23 – Crew on location at 7:00 AM. Flange-up wellhead. Release rig and BOP at 10:00 AM. OCD will be here 5/12/23 for MIT test.

5/12/23 – Ran MIT test for OCD at 8:30 AM. Test was successful. Chart was submitted and accepted by OCD on-line.



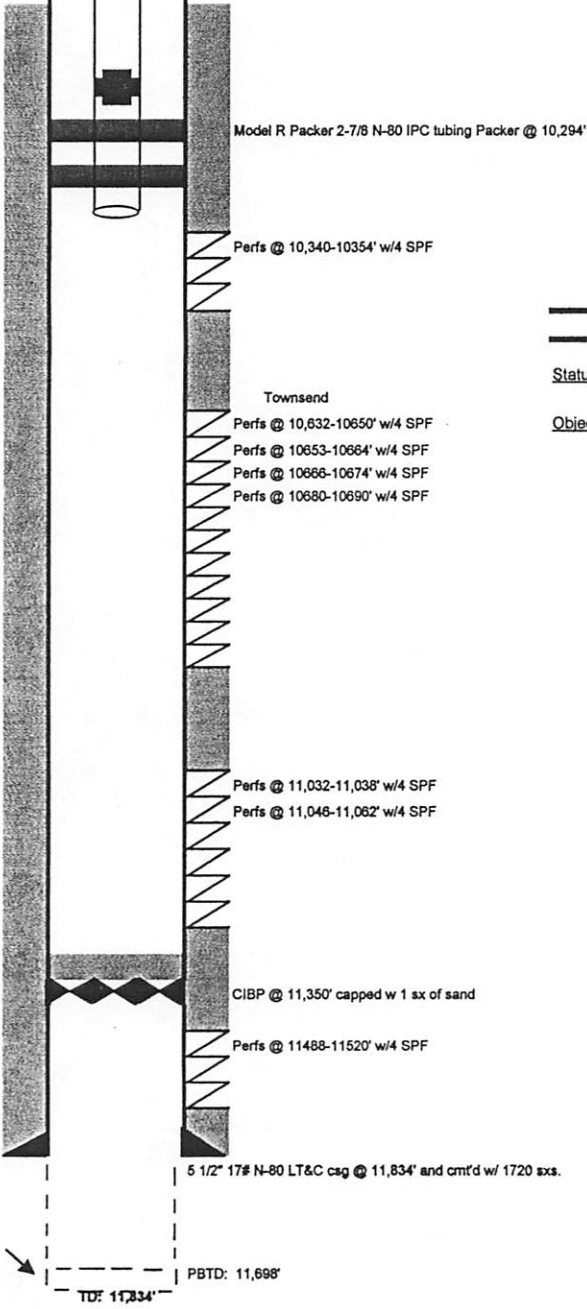
WELL:	Watson 1-6	OPERATOR:	DKD, L.L.C.
COUNTY:	Lea	LOCATION:	SEC 6-16S-36E
STATE:	New Mexico	FIELD:	Lovington (Strawn)
FWL:	1417'	ELEVATION:	GL: 3957' KB: 3975'
FSL:	2857'		

CASING RECORD						
SURFACE CASING						
O.D.	WT./FT.	GRADE	THD	TOP	BTM	NO. JTS.
13.375"	54.50#	H40	ST&C	0'	495'	
9.625"	40.#	J55		0'	4,205'	

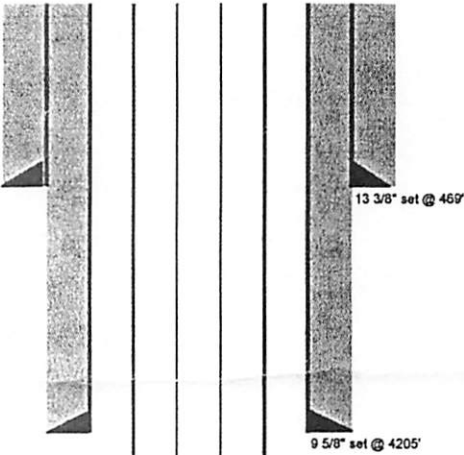
PRODUCTION CASING						
O.D.	WT./FT.	GRADE	THD	TOP	BTM	NO. JTS.
5.500"	17.00#	N80		0'	11,698'	

TUBING						
O.D.	WT./FT.	GRADE	THD	TOP	BTM	
2.875"	6.50#	N80	EUE	0'	10,294'	

PERFORATION RECORD				
DATE	TOP	BOTTOM	SPF	ZONE
	10,340'	10,354'	3	Bough C
	10,632'	10,650'	6	Townsend
	10,666'	10,674'	5	Townsend
	10,680'	10,690'	6	Townsend



REMARKS	
Status:	Salt Water Disposal Well cased. PBTD @ 11,698' due to 107' fill.
Objective:	



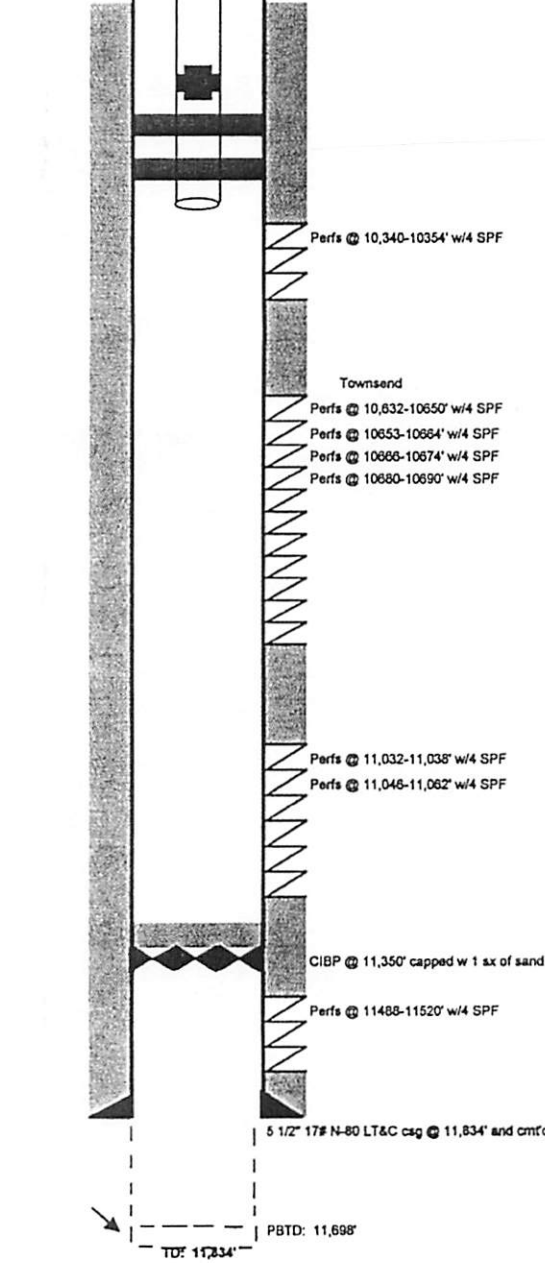
WELL:	Watson 1-6	OPERATOR:	DKD, L.L.C.
COUNTY:	Lea	LOCATION:	SEC 6-16S-36E
STATE:	New Mexico	FIELD:	Lovington (Strawn)
FWL:	1417'		
FSL:	2857'	ELEVATION:	GL: 3957' KB: 3975'

CASING RECORD						
SURFACE CASING						
O.D.	WT./FT.	GRADE	THD	TOP	BTM	NO. JTS.
13.375"	54.50#	H40	ST&C	0'	495'	
9.625"	40.#	J55		0'	4,205'	

PRODUCTION CASING						
O.D.	WT./FT.	GRADE	THD	TOP	BTM	NO. JTS.
5.500"	17.00#	N80		0'	11,698'	

TUBING						
O.D.	WT./FT.	GRADE	THD	TOP	BTM	
2.875"	6.50#	N80	EUE	0'	10,294'	

PERFORATION RECORD				
DATE	TOP	BOTTOM	SPF	ZONE
	10,340'	10,354'	3	Bough C
	10,632'	10,650'	6	Townsend
	10,666'	10,674'	5	Townsend
	10,680'	10,690'	6	Townsend



REMARKS	
Status:	Salt Water Disposal Well cased. PBTD @ 11,698' due to 107' fill.
Objective:	

District I
1625 N. French Dr., Hobbs, NM 88240
Phone:(575) 393-6161 Fax:(575) 393-0720
District II
811 S. First St., Artesia, NM 88210
Phone:(575) 748-1283 Fax:(575) 748-9720
District III
1000 Rio Brazos Rd., Aztec, NM 87410
Phone:(505) 334-6178 Fax:(505) 334-6170
District IV
1220 S. St Francis Dr., Santa Fe, NM 87505
Phone:(505) 476-3470 Fax:(505) 476-3462

State of New Mexico
Energy, Minerals and Natural Resources
Oil Conservation Division
1220 S. St Francis Dr.
Santa Fe, NM 87505

CONDITIONS

Action 217967

CONDITIONS

Operator: DKD,LLC P.O. Box 682 Tatum, NM 88267	OGRID: 210091
	Action Number: 217967
	Action Type: [C-103] NOI Workover (C-103G)

CONDITIONS

Created By	Condition	Condition Date
kfortner	None	5/18/2023