

State of New Mexico
Energy, Minerals and Natural ResourcesForm C-103
Revised July 18, 2013

Office
District I - (575) 393-6161
1625 N. French Dr., Hobbs, NM 88240
District II - (575) 748-1283
811 S. First St., Artesia, NM 88210
District III - (505) 334-6178
1000 Rio Brazos Rd., Aztec, NM 87410
District IV - (505) 476-3460
1220 S. St. Francis Dr., Santa Fe, NM
87505

OIL CONSERVATION DIVISION
1220 South St. Francis Dr.
Santa Fe, NM 87505

WELL API NO. 30-025-43422
5. Indicate Type of Lease STATE <input checked="" type="checkbox"/> FEE <input type="checkbox"/>
6. State Oil & Gas Lease No. 316809
7. Lease Name or Unit Agreement Name Quail "16" State SWD
8. Well Number 9
9. OGRID Number 151416
10. Pool name or Wildcat SWD; Devonian

SUNDRY NOTICES AND REPORTS ON WELLS
(DO NOT USE THIS FORM FOR PROPOSALS TO DRILL OR TO DEEPEN OR PLUG BACK TO A DIFFERENT RESERVOIR. USE "APPLICATION FOR PERMIT" (FORM C-101) FOR SUCH PROPOSALS.)

1. Type of Well: Oil Well ☐ Gas Well ☐ Other ☐ Salt Water Disposal2. Name of Operator
Fasken Oil and Ranch, Ltd.3. Address of Operator
6101 Holiday Hill Road, Midland, TX 797074. Well Location
Unit Letter N : 1050 feet from the South line and 2330 feet from the West line
Section 16 Township 20S Range 34E NMPM County Lea11. Elevation (Show whether DR, RKB, RT, GR, etc.)
3636.7 GL

12. Check Appropriate Box to Indicate Nature of Notice, Report or Other Data

NOTICE OF INTENTION TO:

PERFORM REMEDIAL WORK ☒ PLUG AND ABANDON ☐
TEMPORARILY ABANDON ☐ CHANGE PLANS ☐
PULL OR ALTER CASING ☐ MULTIPLE COMPL ☐
DOWNHOLE COMMINGLE ☐
CLOSED-LOOP SYSTEM ☐
OTHER: ☐

SUBSEQUENT REPORT OF:

REMEDIAL WORK ☐ ALTERING CASING ☐
COMMENCE DRILLING OPNS. ☐ P AND A ☐
CASING/CEMENT JOB ☐
OTHER: Intermediate Casing ☐

13. Describe proposed or completed operations. (Clearly state all pertinent details, and give pertinent dates, including estimated date of starting any proposed work). SEE RULE 19.15.7.14 NMAC. For Multiple Completions: Attach wellbore diagram of proposed completion or recompletion.

See attached procedure.

Spud Date:

Rig Release Date:

I hereby certify that the information above is true and complete to the best of my knowledge and belief.

SIGNATURE Addison Guelker TITLE Environmental Analyst DATE 6/1/23Type or print name Addison Guelker E-mail address: addisong@forl.com PHONE: 432-687-1777

For State Use Only

APPROVED BY: _____ TITLE _____ DATE _____

Conditions of Approval (if any): _____

Quail 16 State SWD No. 9
1050' FSL & 2330' FWL
Section 16, T20S, R34E
Lea County, New Mexico

OBJECTIVE:	Replace Tubing String, Stimulate
WELL DATA:	
13-3/8" 48# H-40, 54.5# J-55 casing:	Set at 1650', cmt with 945 sx "C" (12.8 ppg) + 290 sx "C" (14.8 ppg), circ 130 bbls cmt to surface
9-5/8" 40# HC-K55 casing:	Set at 5191', DV tool at 3846.16', ECP at 3848.70', cmt 1 st stg with 362 sx "C" (12.5 ppg) + 250 sx "C" (14.8 ppg), circ 20 bbls cmt to surface. Cmt 2 nd stg with 1527 sx "C" (12.5 ppg) + 200 sx "C" (14.8 ppg), circ 205 bbls cmt to surface.
7" 26# NT80/NT90, 29# HC-L80 casing:	Set at 14,726' DV tool #1 at 10,186.72', DV tool #2 at 5208.14', cmt 1 st stg with 455 sx Pro-Eco "H" (13.1 ppg) + 150 sx "H" (17.5 ppg), circ 30 bbls cmt to surface. Cmt 2 nd stg with 347 sx Pro-Eco "C" (11.8 ppg) + 205 sx "H", circ 20 bbls cmt to surface. Cmt 3 rd stg with 280 sx Pro-Eco "C" (11.6 ppg) + 152 sx "C" (14.8 ppg), circ 11 bbls cmt to surface.
6" Open Hole:	+/-14,730'-16,500' (Devonian)
KB:	25' above GL
TD:	16,500'
Marker Joint:	7" marker joint at 11,005.32'-11,017.51'
Tubing Detail:	See WBD.

1. Locate and test anchors.
2. MIRU Pulling Unit, rig mats, catwalk, two sets of pipe racks. Set frac tank and load with 400 bbl fresh water treated with biocide.
3. Take delivery of +/-14,850' 4-1/2" 12.75# L-80 8rd EUE w/ IC-1850AR IPC tubing. Clean, drift and inspect threads on casing. Tally new tubing string and install clean thread protectors.
4. ND tree, NU manual BOP with 4.5" pipe rams. RU Casing crew with LD machine.
5. Pick up on tubing, and POW laying down, 7-1/16" x 4-1/2" Buttress box x 4-1/2" buttress box pipe landing sub, (2) 4-1/2" Buttress L80 IC-101 subs (30.10'), 325 jts 4-1/2" Buttress L-80 IC-101 Nylon Tubing, 4-1/2" Buttress x 3-1/2" EUE 8 rd IPC XO, 3-1/2" x 2.813" X ss profile nipple, and 3-1/2" EUE x 3.07" nickel plated seal assembly. Install thread protectors on all tubing before laying down. Haul tubing string to NOV for salvage/inspection.
6. Inspect and redress seal assembly.
7. RIW with redressed/new nickel plated seal assembly with 2 sets of off molded seals and IPC coated mule shoe bottom, 3-1/2" EUE 8rd x 2.813" X ss profile nipple, 4-1/2" 8rd EUE x 3.5" EUE 8rd IPC XO, +/- 14,674' of 4-1/2" 12.75# L-80 8rd EUE w/ IC-1850AR IPC tubing.
8. Space out tubing and land seal assembly with 18 pts compression on permanent packer set at 14,712', load casing with PW and test packer and casing to 500 psi for 10".
9. Mix packer fluid with FW, release seal assembly and pump 250 bfw with packer fluid and biocide down annulus, latch into seal assembly. Pressure test 7" x 4.5" tubing/casing annulus to 500 psi with chart recorder.
10. Following good test. Hang tubing, ND BOP and NU new injection tree and RDPU. Notify OCD 48 hrs prior to running H5 test on casing annulus.
11. MIRU Stimulation Company.
12. RU pump trucks equipped for 20 bpm to pull from acid transports. Tie pumps into 3" regular thread injection T and test lines to 3000 psi.

13. Open well and acidize Devonian open hole interval with +/-12,000 gals 15% NEFE HCl acid, double inhibited, with 4000# rock salt in 5 stages as follows:

- 2,000 gals 15% NEFE DI HCl
- 750 lbs graded rock salt in gelled brine water
- 2,000 gals 15% NEFE DI HCl
- 750 lbs graded rock salt in gelled brine water
- 1,500 gals 15% NEFE DI HCl
- 1000 lbs graded rock salt in gelled brine water
- 3,000 gals 15% NEFE DI HCl
- 1500 lbs graded rock salt in gelled brine water
- 3,500 gals 15% NEFE DI HCl

Displace acid with 200 bfw + 500 bpw from battery. Treat at 20-25 bpm as pressure allows. Do not exceed 3000 psi without contacting Midland office for further instructions. Note ISIP, 5", 10" 15" pressures.

14. Bleed off any pressure on lines. RD acid pumps.

15. Return well to injection. Report daily rates and pressures on drilling report.

Well:

Operator:

Location:

Compl.:

API #:

TD:

PBTD:

Casing:

Quail 16 State SWD No. 9

Fasken Oil and Ranch, Ltd.

1050' FSL and 2330' FWL
Sec 16, T20S, R34E
Lea County, NM

1/9/2017 released rig

30-025-434224

16,500'

16,500' (open hole TD)

13-3/8" 54# J55 & 48# H40 @ 1650' KB

w/ 945sx "C" (12.8 ppg) + 290 sx "C" (14.8 ppg)

TOC surf, circ 130 bbls cmt

9-5/8" 40# HCK55 @ 5191' KB

1st stg: 362 sx "C" (12.5 ppg) + 250sx "C" (14.8 ppg)

Circ 20 bbls cmt off DV tool

DV- 9-5/8" @ 3846.16'

2nd stg: 1527 sx "C" (12.5 ppg) + 200 sx "C" (14.8 ppg)

TOC surf, circ 205 bbls cmt

7" 26# NT80/NT90, 29# HC-L80 @ 14726'

1st stg: 455 sx Pro-Eco "H" (13.1 ppg) + 150 sx "H" (17.5 ppg)

circ 30 bbls cmt off DV1

DV1- 7" @ 10,186.72'

2nd stg: 347 sx Pro-Eco "C" (11.8 ppg) + 205 sx "H"

circ 20 bbls cmt off DV2

DV2- 7" @ 5208.14'

3rd stg: 280 sx Pro-Eco "C" (11.6 ppg) + 152 sx "C" (14.8 ppg)

TOC surf, circ 11 bbls cmt

Hole Sizes:

17-1/2" Surf-1,665'

12-1/4" 1665'-5205'

8-3/4" 5205'-14,733'

6" 14,733'-16,500'

Tubing Detail	
1-Downing 7-1/16" x 4-1/2 Btrs Box X 4-1.2" Btrs Box pipe landing sub	
1 – 4-1/2" x 20.10' Buttress L-80 IC-101 Nylon IPC Sub (New)	
1 – 4-1/2" x 10.00' Buttress L-80 IC-101 Nylon IPC Sub (New)	
325 – jts 4-1/2" Buttress L-80 IC-101 Nylon IPC Tubing (New)	
1 – 4-1/2" Buttress x 3-1/2" EUE 8rd IPC x 4-1/2" OD. (New)	
1 – 3-1/2" EUE 8rd x 2.813" X SS Inline Profile Nipple w/ PN NP coupling, Set at: 14,703.50' (New)	
1 – 3-1/2" EUE 8rd x 3.07' Nickel Plated Seal Assembly w/ 2 sets of Off Molded Seals w/ Mule Shoed btm IPC coated	
Total	
+KB	
Compression	
Total	

as of 1/18/17

GL: 3636.7'

KB: 3661.7'

TOC surf, circ 205 bbls cmt

13-3/8" 54# J55 & 48# H40 @ 1650' KB

TOC surf, circ 130 bbls cmt

DV- 9-5/8" @ 3846.16'

9-5/8" 40# HCK55 @ 5191' KB

TOC surf, circ 205 bbls cmt

DV2- 7" @ 5208.14'

DV1- 7" @ 10,186.72'

pk^r set at 14,712'

Weatherford nickel plated 7" x 4.5" x 4" ID seal bore permanent pkr w/ nickel plated 3-1/2" x 2.831" "XN" Nipple w/ 2.67" ID No-Go, 3-1/2" x 6' FG tubing sub and 3-1/2" EUE 8rd SS WL entry guide

PBTD: 16,500' (open hole TD)

TD: 16,500'

7" 26# NT80/NT90, 29# HC-L80 @ 14726'

TOC surf, circ 11 bbls cmt

6" open hole from 7" casing shoe (+/-14,726') to 16,500'

1.00

20.10

10.00

14644.40

1.00

1.10

3.07

14680.67

23.00

-1.10

14702.57

Released to Imaging: 6/2/2023 3:27:50 PM

Proposed 6/1/2023

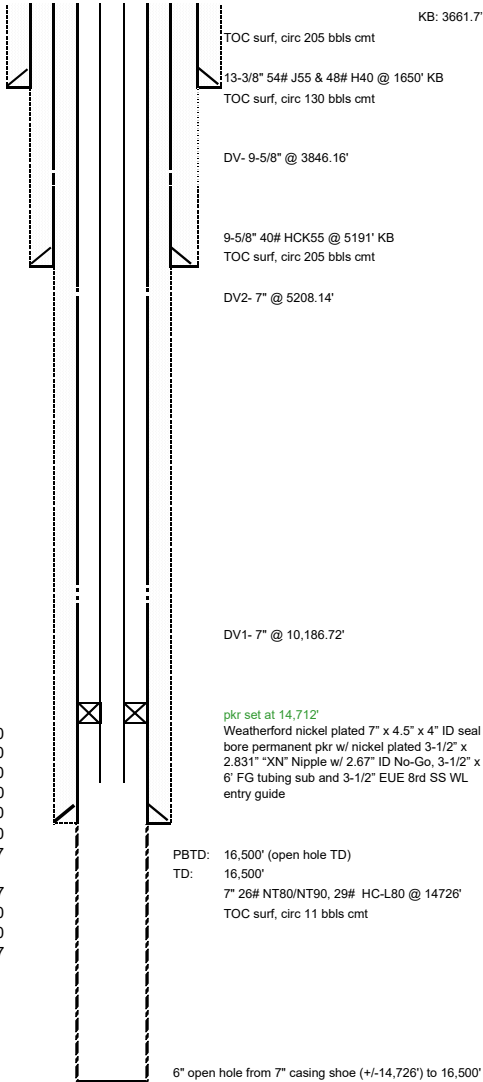
Well: **Quail 16 State SWD No. 9**
Operator: **Fasken Oil and Ranch, Ltd.**
Location: 1050' FSL and 2330' FWL
Sec 16, T20S, R34E
Lea County, NM
Compl.: 1/9/2017 released rig
API #: 30-025-434224
TD: 16,500'
PBTD: 16,500' (open hole TD)
Casing: **13-3/8" 54# J55 & 48# H40 @ 1650' KB**
w/ 945sx "C" (12.8 ppg) + 290 sx "C" (14.8 ppg)
TOC surf, circ 130 bbls cmt
9-5/8" 40# HCK55 @ 5191' KB
1st stg: 362 sx "C" (12.5 ppg) + 250sx "C" (14.8 ppg)
Circ 20 bbls cmt off DV tool
DV- 9-5/8" @ 3846.16'
2nd stg: 1527 sx "C" (12.5 ppg) + 200 sx "C" (14.8 ppg)
TOC surf, circ 205 bbls cmt
7" 26# NT80/NT90, 29# HC-L80 @ 14726'
1st stg: 455 sx Pro-Eco "H" (13.1 ppg) + 150 sx "H" (17.5 ppg)
circ 30 bbls cmt off DV1
DV1- 7" @ 10,186.72'
2nd stg: 347 sx Pro-Eco "C" (11.8 ppg) + 205 sx "H"
circ 20 bbls cmt off DV2
DV2- 7" @ 5208.14'
3rd stg: 280 sx Pro-Eco "C" (11.6 ppg) + 152 sx "C" (14.8 ppg)
TOC surf, circ 11 bbls cmt

Hole Sizes: 17-1/2" Surf-1,665'
12-1/4" 1665'-5205'
8-3/4" 5205'-14,733'
6" 14,733'-16,500'

Tubing Detail

1-Downing 7-1/16" x 4-1/2 8rd EUE X 4-1.2" 8rd EUE pipe landing sub
1 - 4-1/2" x 20.10' 8rd EUE L-80 IC-1850AR IPC Sub (New)
1 - 4-1/2" x 10.00' 8rd EUE L-80 IC-1850AR IPC Sub (New)
325 - jts 4-1/2" 8rd EUE L-80 IC-1850AR IPC Tubing (New)
1 - 4-1/2" 8rd EUE x 3-1/2" EUE 8rd IPC x 4-1/2" OD. (New)
1 - 3-1/2" EUE 8rd x 2.813" X SS Inline Profile Nipple w/ PN NP coupling, Set at: 14,703.50'
1 - 3-1/2" EUE 8rd x 3.07" Nickel Plated Seal Assembly w/ 2 sets of Off Molded Seals w/ Mule Shoed btm IPC coated

Total 14680.67
+KB 23.00
Compression -1.10
Total 14702.57



District I
1625 N. French Dr., Hobbs, NM 88240
Phone:(575) 393-6161 Fax:(575) 393-0720
District II
811 S. First St., Artesia, NM 88210
Phone:(575) 748-1283 Fax:(575) 748-9720
District III
1000 Rio Brazos Rd., Aztec, NM 87410
Phone:(505) 334-6178 Fax:(505) 334-6170
District IV
1220 S. St Francis Dr., Santa Fe, NM 87505
Phone:(505) 476-3470 Fax:(505) 476-3462

State of New Mexico
Energy, Minerals and Natural Resources
Oil Conservation Division
1220 S. St Francis Dr.
Santa Fe, NM 87505

CONDITIONS

Action 222907

CONDITIONS

Operator: FASKEN OIL & RANCH LTD 6101 Holiday Hill Rd Midland, TX 79707	OGRID: 151416
	Action Number: 222907
	Action Type: [C-103] NOI Workover (C-103G)

CONDITIONS

Created By	Condition	Condition Date
mgebremichael	The conditions for approval are as follows: no change to tubing size and packer setting depth.	6/2/2023