

Well Name: TANK FEDERAL	Well Location: T18S / R32E / SEC 1 / NWSW /	County or Parish/State: LEA / NM
Well Number: 01	Type of Well: OIL WELL	Allottee or Tribe Name:
Lease Number: NMNM63365	Unit or CA Name:	Unit or CA Number:
US Well Number: 300252988800S1	Well Status: Producing Oil Well	Operator: MATADOR PRODUCTION COMPANY

For record only Like approval from BLM KF NMOCD 6/9/23

Notice of Intent

Sundry ID: 2719947

Type of Submission: Notice of Intent	Type of Action: Plug and Abandonment
Date Sundry Submitted: 03/09/2023	Time Sundry Submitted: 11:30
Date proposed operation will begin: 04/01/2023	

Procedure Description: BLM Bond No.: NMB001079 Surety Bond No.: RLB0015172 Matador is requesting to plug and abandon the Tank 1 Federal #001, per the required BLM COAs, following the procedure below: • Notify BLM 24 hrs before MIRU. • Safety mtg, MIRU, check pressures, ND wellhead, NU BOPs & POOH w/ rods & tbg. • RIH & Set CIBP at 8,300'; Pressure test csg to 500 psi for 30 minutes; Circulate and displace hole w/ MLF. • Spot 25 sks CI H cmt on CIBP; WOC & Tag. (Isolate open perforations) • Spot 115 sk balanced plug CI C cmt at 7,260'; WOC & Tag. (Bone Spring & DV tool) • Spot 115 sk balanced plug CI C cmt at 5,600'. (Delaware & Grayburg) • Spot 25 sk balanced plug CI C cmt at 3,300'. (7 Rivers & Production casing TOC) • Perf @ 2,900' & Sqz 50 sks CI C cmt. WOC & Tag. (Intermediate Shoe & Yates) • Perf @ 465' & Sqz CI C cmt to surface on all strings. (Surface Shoe) • Cut off wellhead and ensure cmt to surface on all csg strings. • Install dry hole marker per BLM/NMOCD specifications. *Current and proposed wellbore diagrams attached **Mud laden fluid (MLF) mixed at 25sx/100 bbls water will be spotted between each plug.

Surface Disturbance

Is any additional surface disturbance proposed?: No

NOI Attachments

- Procedure Description
- Tank_1_Federal__001_Planned_PA_WBD_20230309110400.pdf
 - Tank_1_Federal__001_Current_WBD_20230309110359.pdf

Well Name: TANK FEDERAL	Well Location: T18S / R32E / SEC 1 / NWSW /	County or Parish/State: LEA / NM
Well Number: 01	Type of Well: OIL WELL	Allottee or Tribe Name:
Lease Number: NMNM63365	Unit or CA Name:	Unit or CA Number:
US Well Number: 300252988800S1	Well Status: Producing Oil Well	Operator: MATADOR PRODUCTION COMPANY

Conditions of Approval

Specialist Review

TANK_FEDERAL_1__2719947__COA_AND_PROCEDURE_20230501164632.pdf

Operator

I certify that the foregoing is true and correct. Title 18 U.S.C. Section 1001 and Title 43 U.S.C. Section 1212, make it a crime for any person knowingly and willfully to make to any department or agency of the United States any false, fictitious or fraudulent statements or representations as to any matter within its jurisdiction. Electronic submission of Sundry Notices through this system satisfies regulations requiring a

Operator Electronic Signature: NICKY FITZGERALD

Signed on: MAR 09, 2023 11:02 AM

Name: MATADOR PRODUCTION COMPANY

Title: Regulatory Consultant

Street Address: 5400 LBJ FREEWAY STE 1500

City: DALLAS

State: TX

Phone: (972) 371-5448

Email address: nicky.fitzgerald@matadorresources.com

Field

Representative Name:

Street Address:

City:

State:

Zip:

Phone:

Email address:

BLM Point of Contact

BLM POC Name: KEITH P IMMATTY

BLM POC Title: ENGINEER

BLM POC Phone: 5759884722

BLM POC Email Address: KIMMATTY@BLM.GOV

Disposition: Approved

Disposition Date: 05/01/2023

Signature: KEITH IMMATTY

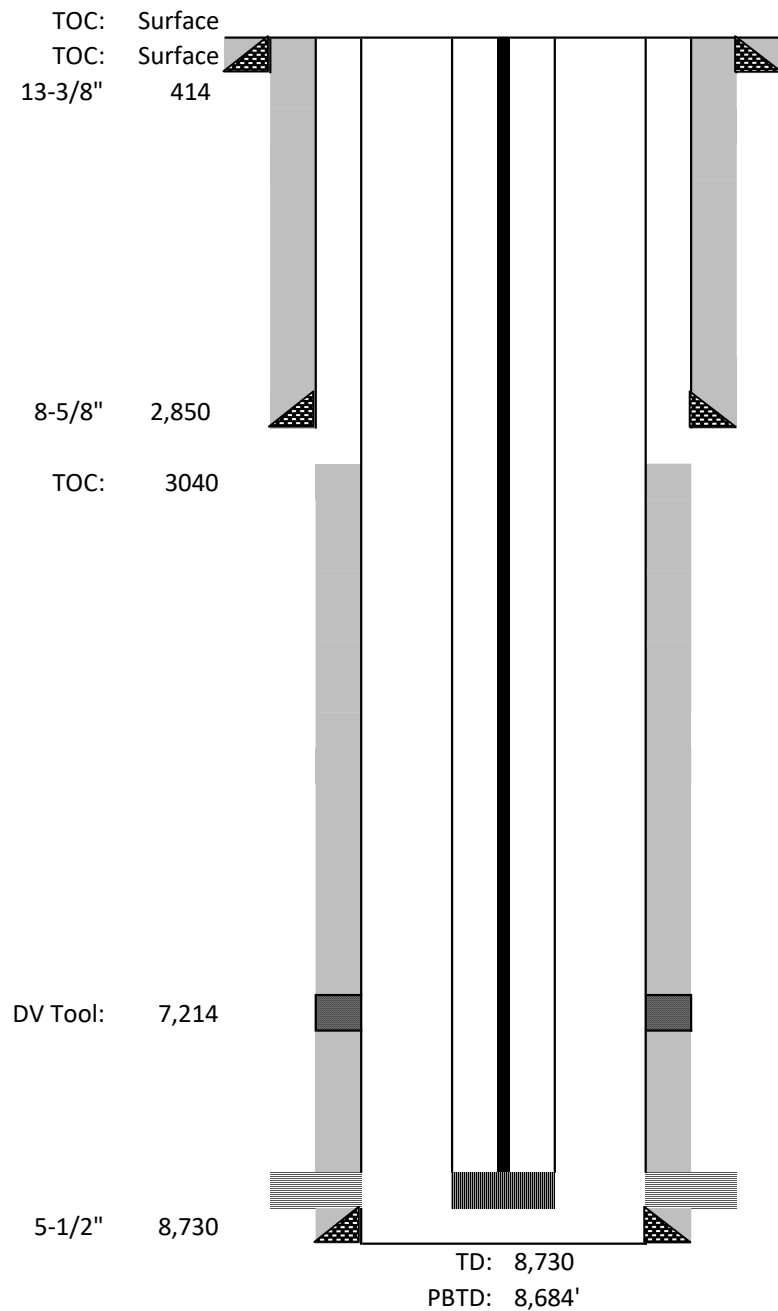
Matador is requesting to plug and abandon the Tank 1 Federal #001, per the required BLM COAs, following the procedure below:

- Notify BLM 24 hrs before MIRU.
- Safety mtg, MIRU, check pressures, ND wellhead, NU BOPs & POOH w/ rods & tbg.
- RIH & Set CIBP at 8,300'; Pressure test csg to 500 psi for 30 minutes; Circulate and displace hole w/ MLF.
- Spot 25 sks CI H cmt on CIBP; WOC & Tag. (Isolate open perforations)
- Spot 115 sk balanced plug CI C cmt at 7,260'; WOC & Tag **6105' or higher**. (Bone Spring & DV tool)
- Spot 115 sk balanced plug CI C cmt at 5,600'. (Delaware & Grayburg)
- Spot 25 sk balanced plug CI C cmt at 3,300'. (7 Rivers & Production casing TOC)
- Perf @ 2,900' & Sqz 50 sks CI C cmt. WOC & Tag. Verify **2723' or higher** (Intermediate Shoe & Yates)
- **TOS: Perf and sqz 25sx Class C. 1540-1425'. Tag and verify**
- Perf @ 465' & Sqz CI C cmt to surface on all strings. (Surface Shoe)
- Cut off wellhead and ensure cmt to surface on all csg strings.
- Install dry hole marker per BLM/NMOCD specifications.

*Current and proposed wellbore diagrams attached

**Mud laden fluid (MLF) mixed at 25sx/100 bbls water will be spotted between each plug.

Tank 1 Federal #1
1650' FSL & 990' FWL Sec. 1-T18S-R32E
Lea County, NM
API: 30-025-29888
CURRENT WELLBORE SCHEMATIC
Spudded: 12/3/87



1/23/1988 Bone Spring perfs (8,377'-8,406')
1/8/1988 Bone Spring perfs (8,432'-8,462')
1/3/1988 Bone Spring perfs (8,530'-8,532')

	Casing Information		Type	Weight (lb/ft)	Joints	Depth Set
	Hole Size	Casing Size				
Surface	17-1/2"	13-3/8"	J-55	54.5#	10	414
Intermediate	11"	8-5/8"	J-55	24#, 32#	68	2,850
Production	7-7/8"	5-1/2"	J-55	17#	209	8,730
DV Tool						7,214
SH Joint						4,000

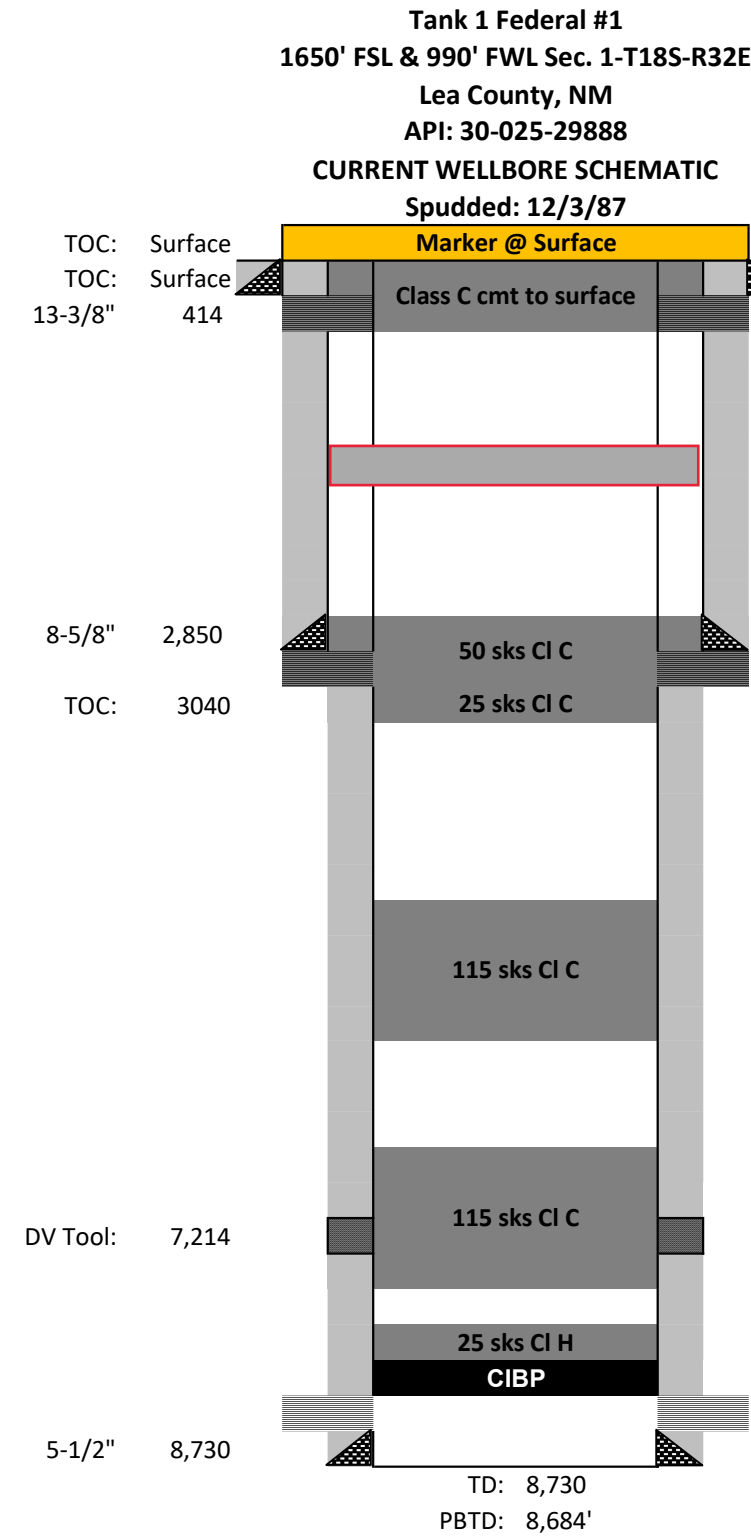
	Cementing Record		
	Type	TOC	Date Run
Surface	425 sks CI C	Surface	12/3/1987
Intermediate	1100 sks x 200 sks CI C	Surface	12/7/1987
Production 1st	175 sks x 150 sks SSI	3040	12/24/1987
Production 2nd	1200 sks x 100 sks CI H	DV Tool	12/24/1987

	Tubing Information	
Item	Notes	Depth
Tubing	(254) 2-3/8" tubing	
Tubing Anchor	TA	8,243'
Tubing	(10) 2-3/8" tubing	
Seating Nipple	SN	8,570'
Sand Screen	SND SCRIN	
Bull Plug	2-3/8" BP	8,595'
Plug Back Depth	PBTD	8,684'

Geologic Markers	
Rustler	1,327
Yates	2,802
7 Rivers	3,242
Penrose	4,257
Grayburg	4,548
Delaware	5,544
Bone Spring	6,218

	Rod String Information
Item	Notes
Pony Rod	4' Pony Rods
Rod	(114) 7/8" Rods
Rod	(206) 3/4" Rods
Rod	(21) 7/8" Rods
Pump	2" x 1.25" x 24' W/BOC

	Perforation Information	
Date	Formation	Depth
1/23/1988	Bone Spring perms	(8,377'-8,406')
1/8/1988	Bone Spring perms	(8,432'-8,462')
1/3/1988	Bone Spring perms	(8,530'-8,532')



	Casing Information		Type	Weight (lb/ft)	Joints	Depth Set
	Hole Size	Casing Size				
Surface	17-1/2"	13-3/8"	J-55	54.5#	10	414
Intermediate	11"	8-5/8"	J-55	24#, 32#	68	2,850
Production	7-7/8"	5-1/2"	J-55	17#	209	8,730
DV Tool						7,214
SH Joint						4,000

	Cementing Record			Geologic Markers	
	Type	TOC	Date Run		
Surface	425 sks CI C	Surface	12/3/1987	Rustler	1,327
Intermediate	1100 sks x 200 sks CI C	Surface	12/7/1987	Yates	2,802
Production 1st	175 sks x 150 sks SSI	3040	12/24/1987	7 Rivers	3,242
Production 2nd	1200 sks x 100 sks CI H	DV Tool	12/24/1987	Penrose	4,257
				Grayburg	4,548
				Delaware	5,544
				Bone Spring	6,218

Perforation Information		
Date	Formation	Depth
1/23/1988	Bone Spring perfs	(8,377'-8,406')
1/8/1988	Bone Spring perfs	(8,432'-8,462')
1/3/1988	Bone Spring perfs	(8,530'-8,532')

Sundry ID 2719947

Plug Type	Top	Bottom	Length	Tag	Sacks	Notes
Surface Plug	0.00	465.00	465.00	Verify circulated to surface	325.00	Same as below plug
Shoe Plug	359.86	464.00	104.14	WOC and Tag	325.00	Perf and sqz
Top of Salt @ 1490	1425.10	1540.00	114.90	WOC and Tag	25.00	Perf and sqz
Yates @ 2802	2723.98	2852.00	128.02	WOC and Tag	50.00	Same as below plug
Shoe Plug	2771.50	2900.00	128.50	WOC and Tag	50.00	Perf and sqz
TOC 3050' Perf and sqz above plugs						
Delaware @ 5544	5438.56	5594.00	155.44		115.00	
Bonesprings @ 6218	6105.82	6268.00	162.18	WOC and Tag	115.00	
DV tool plug	7091.86	7264.00	172.14	WOC and Tag	115.00	
CIBP Plug	8265.00	8300.00	35.00	Verify CIBP depth	25.00	Leak test 500psi, 30mins

No more than 2000' is to be allowed between plugs in open hole, and no more than 3000' between plugs in cased hole.

Class H >7500'

Class C <7500'

Fluid used to mix the cement in R111P shall be saturated with the salts common to the section penetrated, and in suitable proportions, but not more than 3% calcium chloride by weight of cement will be considered the desired mixture whenever possible.

Critical, High Cave Karst: Cave Karst depth to surface

R111P: Solid plug in all annuli - 50' from bottom of salt to surface.

Class C: 1.32 ft³/sx

Class H: 1.06 ft³/sx

Onshore Order 2.III.G Drilling Abandonment Requirements: "All formations bearing usable-quality water, oil, gas, or geothermal resources, and/or a prospectively valuable deposit of minerals shall be protected.

Cave Karst/Potash Cement	Low	500.00
---------------------------------	------------	--------

Shoe @ 414.00

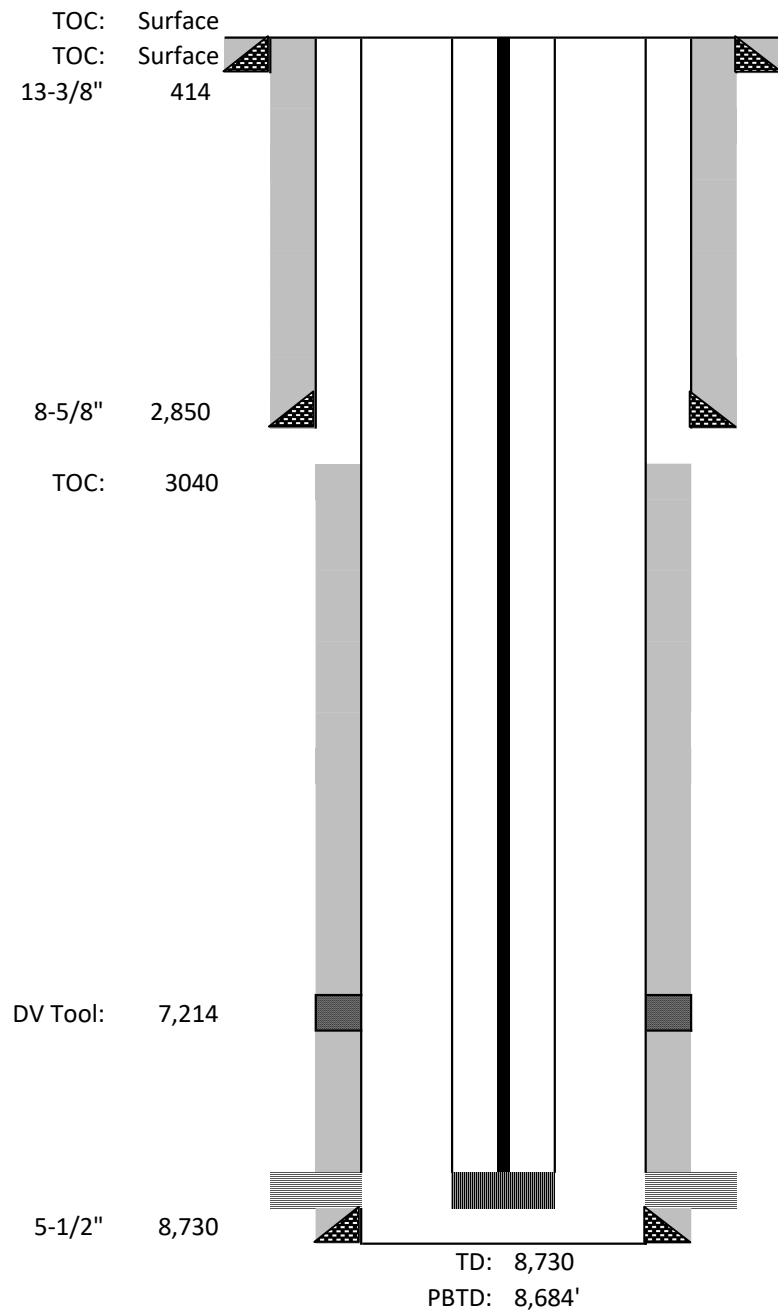
Shoe @ 2850.00

Shoe @ 8730.00

Perforatons Top @	8432.00	Perforations	8462.00
-------------------	---------	--------------	---------

DV Tool @	7214.00	CIBP @	8300.00
-----------	---------	--------	---------

Tank 1 Federal #1
1650' FSL & 990' FWL Sec. 1-T18S-R32E
Lea County, NM
API: 30-025-29888
CURRENT WELLBORE SCHEMATIC
Spudded: 12/3/87



	Casing Information					
	Hole Size	Casing Size	Type	Weight (lb/ft)	Joints	Depth Set
Surface	17-1/2"	13-3/8"	J-55	54.5#	10	414
Intermediate	11"	8-5/8"	J-55	24#, 32#	68	2,850
Production	7-7/8"	5-1/2"	J-55	17#	209	8,730
DV Tool						7,214
SH Joint						4,000

	Cementing Record		
	Type	TOC	Date Run
Surface	425 sks CI C	Surface	12/3/1987
Intermediate	1100 sks x 200 sks CI C	Surface	12/7/1987
Production 1st	175 sks x 150 sks SSI	3040	12/24/1987
Production 2nd	1200 sks x 100 sks CI H	DV Tool	12/24/1987

	<div> <div></div> <div>Tubing Information</div> </div>	
Item	Notes	Depth
Tubing	(254) 2-3/8" tubing	
Tubing Anchor	TA	8,243'
Tubing	(10) 2-3/8" tubing	
Seating Nipple	SN	8,570'
Sand Screen	SND SCRN	
Bull Plug	2-3/8" BP	8,595'
Plug Back Depth	PBTD	8,684'

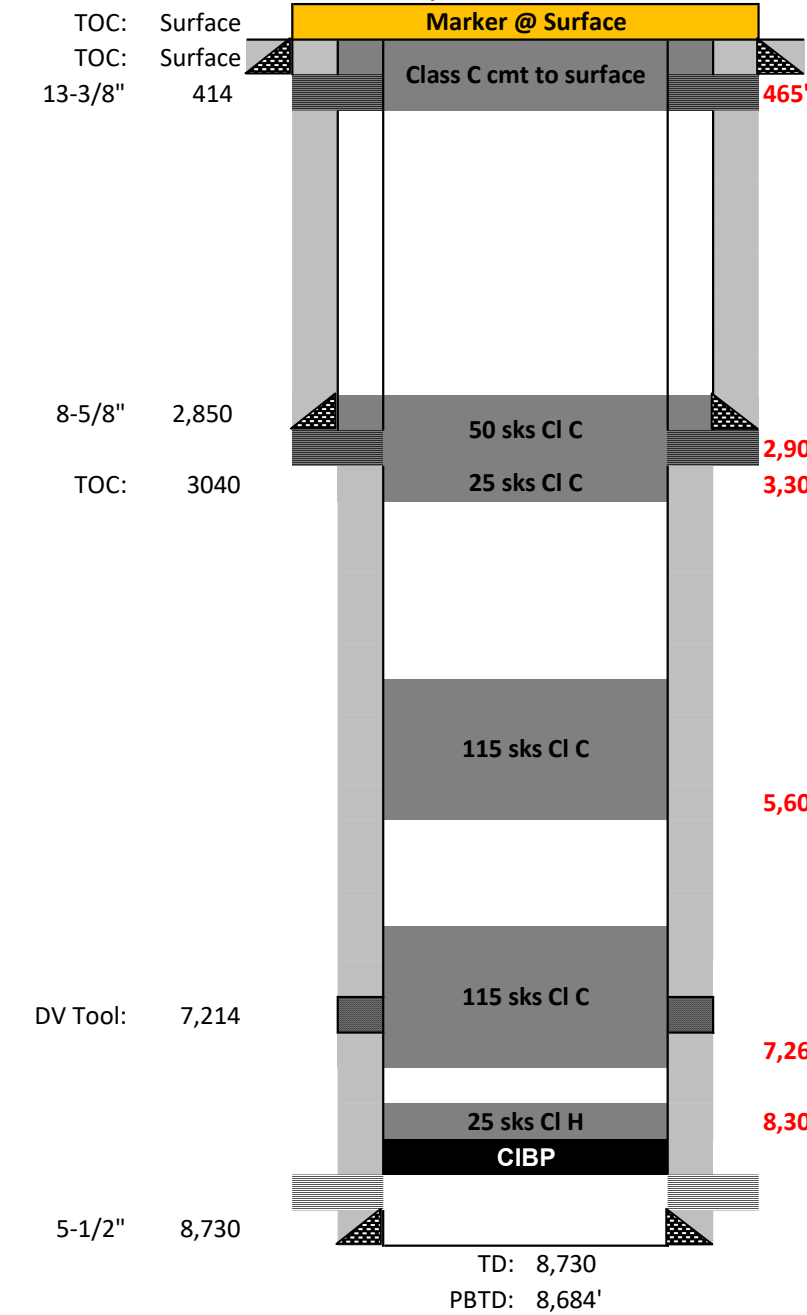
Geologic Markers	
Rustler	1,327
Yates	2,802
7 Rivers	3,242
Penrose	4,257
Grayburg	4,548
Delaware	5,544
Bone Spring	6,218

	Rod String Information
Item	Notes
Pony Rod	4' Pony Rods
Rod	(114) 7/8" Rods
Rod	(206) 3/4" Rods
Rod	(21) 7/8" Rods
Pump	2" x 1.25" x 24' W/BOC

	Perforation Information	
Date	Formation	Depth
1/23/1988	Bone Spring perms	(8,377'-8,406')
1/8/1988	Bone Spring perms	(8,432'-8,462')
1/3/1988	Bone Spring perms	(8,530'-8,532')

1/23/1988	Bone Spring perfs	(8,377'-8,406')
1/8/1988	Bone Spring perfs	(8,432'-8,462')
1/3/1988	Bone Spring perfs	(8,530'-8,532')

Tank 1 Federal #1
1650' FSL & 990' FWL Sec. 1-T18S-R32E
Lea County, NM
API: 30-025-29888
CURRENT WELLBORE SCHEMATIC
Spudded: 12/3/87



	Casing Information					
	Hole Size	Casing Size	Type	Weight (lb/ft)	Joints	Depth Set
Surface	17-1/2"	13-3/8"	J-55	54.5#	10	414
Intermediate	11"	8-5/8"	J-55	24#, 32#	68	2,850
Production	7-7/8"	5-1/2"	J-55	17#	209	8,730
DV Tool						7,214
SH Joint						4,000

	Cementing Record			Geologic Markers	
	Type	TOC	Date Run		
Surface	425 sks CI C	Surface	12/3/1987	Rustler	1,327
Intermediate	1100 sks x 200 sks CI C	Surface	12/7/1987	Yates	2,802
Production 1st	175 sks x 150 sks SSI	3040	12/24/1987	7 Rivers	3,242
Production 2nd	1200 sks x 100 sks CI H	DV Tool	12/24/1987	Penrose	4,257
				Grayburg	4,548
				Delaware	5,544
				Bone Spring	6,218

	Perforation Information	
Date	Formation	Depth
1/23/1988	Bone Spring perms	(8,377'-8,406')
1/8/1988	Bone Spring perms	(8,432'-8,462')
1/3/1988	Bone Spring perms	(8,530'-8,532')

District I
1625 N. French Dr., Hobbs, NM 88240
Phone:(575) 393-6161 Fax:(575) 393-0720
District II
811 S. First St., Artesia, NM 88210
Phone:(575) 748-1283 Fax:(575) 748-9720
District III
1000 Rio Brazos Rd., Aztec, NM 87410
Phone:(505) 334-6178 Fax:(505) 334-6170
District IV
1220 S. St Francis Dr., Santa Fe, NM 87505
Phone:(505) 476-3470 Fax:(505) 476-3462

State of New Mexico
Energy, Minerals and Natural Resources
Oil Conservation Division
1220 S. St Francis Dr.
Santa Fe, NM 87505

COMMENTS

Action 225839

COMMENTS

Operator: MATADOR PRODUCTION COMPANY One Lincoln Centre Dallas, TX 75240	OGRID: 228937
	Action Number: 225839
	Action Type: [C-103] NOI Plug & Abandon (C-103F)

COMMENTS

Created By	Comment	Comment Date
plmartinez	DATA ENTRY PM.	6/9/2023

District I
1625 N. French Dr., Hobbs, NM 88240
Phone:(575) 393-6161 Fax:(575) 393-0720
District II
811 S. First St., Artesia, NM 88210
Phone:(575) 748-1283 Fax:(575) 748-9720
District III
1000 Rio Brazos Rd., Aztec, NM 87410
Phone:(505) 334-6178 Fax:(505) 334-6170
District IV
1220 S. St Francis Dr., Santa Fe, NM 87505
Phone:(505) 476-3470 Fax:(505) 476-3462

State of New Mexico
Energy, Minerals and Natural Resources
Oil Conservation Division
1220 S. St Francis Dr.
Santa Fe, NM 87505

CONDITIONS

Action 225839

CONDITIONS

Operator: MATADOR PRODUCTION COMPANY One Lincoln Centre Dallas, TX 75240	OGRID: 228937
	Action Number: 225839
	Action Type: [C-103] NOI Plug & Abandon (C-103F)

CONDITIONS

Created By	Condition	Condition Date
kfortner	Like approval from BLM	6/9/2023