

District I

1625 N. French Dr., Hobbs, NM 88240 Phone: (575) 393-6161 Fax: (575) 393-0720

District II811 S. First St., Artesia, NM 88210
Phone: (575) 748-1283 Fax: (575) 748-9720**District III**

1000 Rio Brazos Road, Aztec, NM 87410 Phone: (505) 334-6178 Fax: (505) 334-6170

District IV

1220 S. St. Francis Dr., Santa Fe, NM 87505 Phone: (505) 476-3460 Fax: (505) 476-3462

State of New Mexico
Energy Minerals and Natural Resources Oil Conservation Division
1220 South St. Francis Dr.
Santa Fe, NM 87505



Form C-101 Revised July 18,
 2013
AMENDED
REPORT

APPLICATION FOR PERMIT TO DRILL, RE-ENTER, DEEPEN, PLUGBACK, OR ADD A ZONE

¹ Operator Name and Address COG OPERATING LLC		² OGRID Number 229137
		³ API Number
⁴ Property Code 334298	⁵ Property Name Coonskin 28 Fee SWD	⁶ Well No. 1

⁷ Surface Location

UL - Lot	Section	Township	Range	Lot Idn	Feet from	N/S Line	Feet From	E/W Line	County
C	28	24S	35E		1,130'	NORTH	1,960'	WEST	LEA

⁸ Proposed Bottom Hole Location

UL - Lot	Section	Township	Range	Lot Idn	Feet from	N/S Line	Feet From	E/W Line	County

⁹ Pool Information

Pool Name	Pool Code
SWD; Devonian	96101

Additional Well Information

¹¹ Work Type New Well	¹² Well Type S	¹³ Cable/Rotary R	¹⁴ Lease Type P	¹⁵ Ground Level Elevation 3,396'
¹⁶ Multiple N	¹⁷ Proposed Depth 19,550'	¹⁸ Formation Devonian	¹⁹ Contractor TBD	²⁰ Spud Date Upon Approval
Depth to Ground water 230'	Distance from nearest fresh water well 0.19 miles		Distance to nearest surface water N/A	

☒ **We will be using a closed-loop system in lieu of lined pits****²¹ Proposed Casing and Cement Program****SWD-2253**

Type	Hole Size	Casing Size	Casing Weight/ft	Setting Depth	Sacks of Cement	Estimated TOC
Surf	26"	20"	94	625'	1205	Surf
Int	17-1/2"	13-3/8"	54.5	5,450'	3550	Surf
Int	12-1/4"	9-5/8"	53.5	12,500'	2060	Surf
Prod	8-1/5"	7-5/8"	29.7	17,400'	440	12,600' (TOL)

Casing/Cement Program: Additional Comments

--

²² Proposed Blowout Prevention Program

Type	Working Pressure	Test Pressure	Manufacturer
Annular, Pipe & Blind/Shear Rams	10,000 psi	7,000 psi	Hydrill, Cameron or Equivalent

²³ I hereby certify that the information given above is true and complete to the best of my knowledge and belief.**I further certify that I have complied with 19.15.14.9 (A) NMAC and/or 19.15.14.9 (B) NMAC, if applicable.**

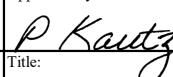
Signature:

Printed name: **Mayte Reyes**Title: **Senior Regulatory Analyst**E-mail Address: **mayte.x.reyes@conocophillips.com**Date: **12/09/2022**

Phone:

OIL CONSERVATION DIVISION

Approved By:



Title:

Approved Date: **07/06/2023**Expiration Date: **07/06/2025**

Conditions of Approval Attached

District I

1625 N. French Dr., Hobbs, NM 88240
Phone: (575) 393-6161 Fax: (575) 393-0720

District II

811 S. First St., Artesia, NM 88210
Phone: (575) 748-1283 Fax: (575) 748-9720

District III

1000 Rio Brazos Road, Aztec, NM 87410
Phone: (505) 334-6178 Fax: (505) 334-6170

District IV

1220 S. St. Francis Dr., Santa Fe, NM 87505
Phone: (505) 476-3460 Fax: (505) 476-3462

State of New Mexico
Energy, Minerals & Natural Resources Department
OIL CONSERVATION DIVISION
1220 South St. Francis Dr.
Santa Fe, NM 87505

Form C-102

Revised August 1, 2011

Submit one copy to appropriate

District Office

☐ AMENDED REPORT

WELL LOCATION AND ACREAGE DEDICATION PLAT

¹ API Number 30-025- 51692	² Pool Code 96101	³ Pool Name SWD;Devonian
⁴ Property Code 334298	⁵ Property Name COONSKIN 28 FEE SWD	⁶ Well Number 1
⁷ OGRID No. 229137	⁸ Operator Name COG OPERATING, LLC	⁹ Elevation 3310'

¹⁰ Surface Location

UL or lot no.	Section	Township	Range	Lot Idn	Feet from the	North/South line	Feet from the	East/West line	County
B	28	24S	35E		1130	NORTH	1960	WEST	LEA

¹¹ Bottom Hole Location If Different From Surface

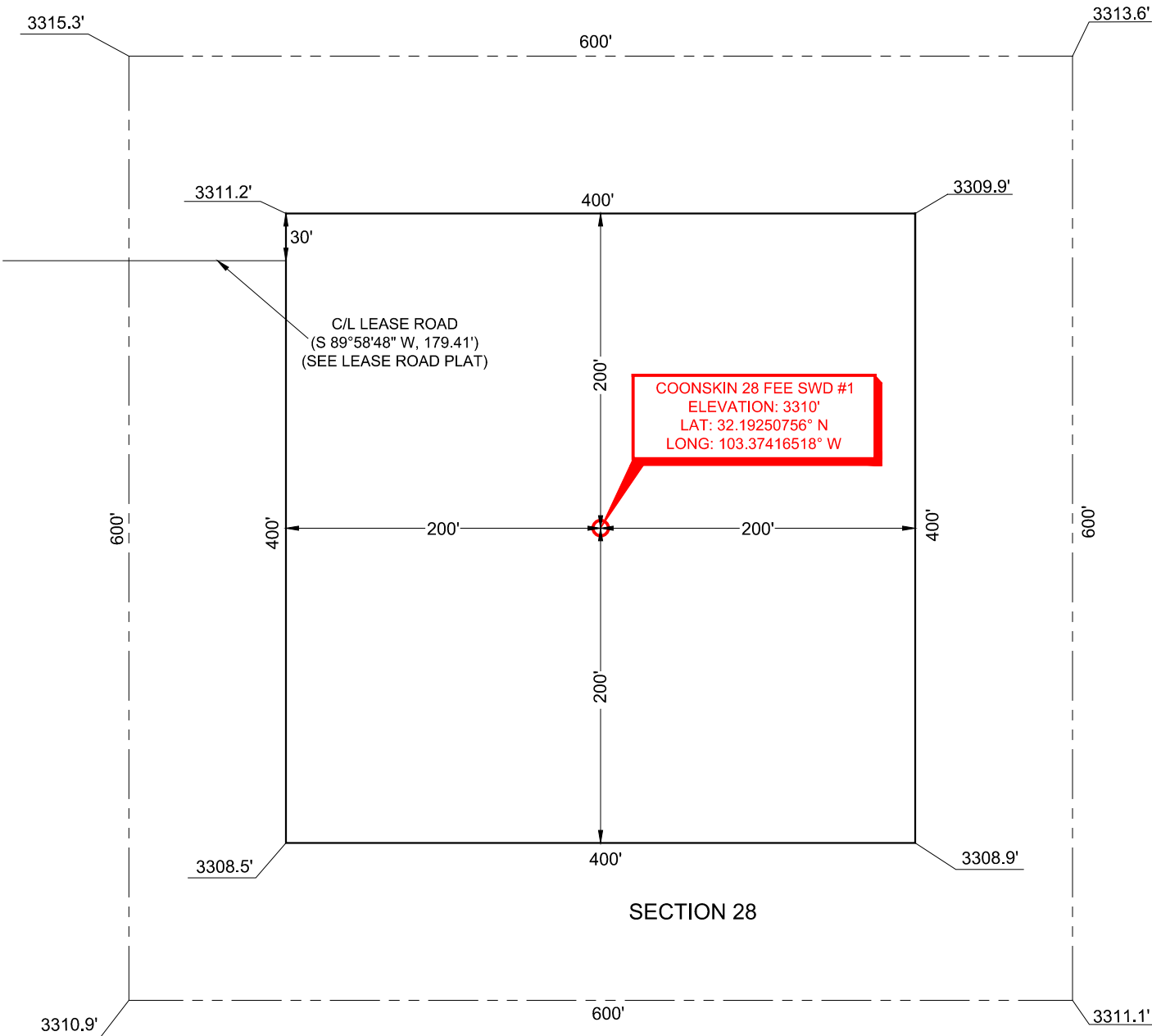
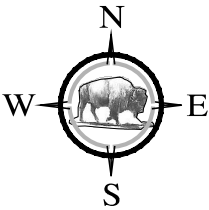
UL or lot no.	Section	Township	Range	Lot Idn	Feet from the	North/South line	Feet from the	East/West line	County

¹² Dedicated Acres	¹³ Joint or Infill	¹⁴ Consolidation Code	¹⁵ Order No. SWD-2253
-------------------------------	-------------------------------	----------------------------------	--

No allowable will be assigned to this completion until all interests have been consolidated or a non-standard unit has been approved by the division.

¹⁶ (C) DETAIL "A" 	^(D) 	^(E) "OPERATOR CERTIFICATION" I hereby certify that the information contained herein is true and complete to the best of my knowledge and belief, and that this organization either owns a working interest or unleased mineral interest in the land including the proposed bottom hole location or has a right to drill this well at this location pursuant to a contract with an owner of such a mineral or working interest, or to a voluntary pooling agreement or a compulsory pooling order heretofore entered by the division. Mayte Reyes 12/9/2022 Signature Date Mayte Reyes Printed Name mayte.x.reyes@cop.com E-mail Address
^(B) CORNER DATA NAD 27 GRID - NM EAST A: FOUND 2" IRON PIPE N 430913.2 - E 794795.3 B: FOUND 1" IRON PIPE N 433555.7 - E 794773.0 C: FOUND 2" IRON PIPE N 436196.1 - E 794750.6 D: FOUND 1" IRON PIPE N 436211.5 - E 797387.3 E: FOUND 2" IRON PIPE N 436243.2 - E 800020.4 F: FOUND 1" IRON PIPE N 433602.8 - E 800045.3 G: FOUND 2" IRON PIPE N 430964.0 - E 800071.1 H: FOUND 1" IRON PIPE N 430939.2 - E 797434.9	^(F) GEODETIC DATA NAD 27 GRID - NM EAST SURFACE LOCATION N 435077.6 - E 796720.2 LAT: 32.19250756° N LONG: 103.37416518° W 28 GEODETIC DATA NAD 83 GRID - NM EAST SURFACE LOCATION N 435136.4 - E 837905.9 LAT: 32.19341083° N LONG: 103.50776132° W	^(G) "SURVEYOR CERTIFICATION" I hereby certify that the well location shown on this plat was plotted from field notes of actual surveys made by me or under my supervision, and that the same is true and correct to the best of my belief. 4-4-2019 Date of Survey Signature and Seal of Professional Surveyor 12351 Certificate Number

COONSKIN 28 FEE SWD #1
(1130' FNL & 1960' FWL)
SECTION 28, T24S, R35E, N.M.P.M.,
LEA COUNTY, NEW MEXICO



DIRECTIONS TO LOCATION

FROM THE INTERSECTION OF CR-2 (BATTLE AXE ROAD) AND HIGHWAY 128;

GO SOUTHEAST ON HIGHWAY 128 APPROX. 0.71 OF A MILE TO A LEASE ROAD ON THE LEFT;

TURN LEFT AND GO NORTH APPROX. 0.90 OF A MILE UNTIL FRAC PIT AND TURN RIGHT ONTO LEASE ROAD;

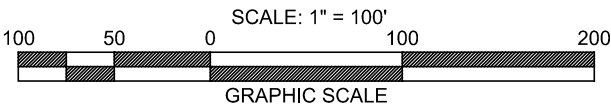
GO EAST ON LEASE ROAD APPROX. 1.34 MILES;

SITE ON RIGHT APPROX. 785.77 FEET



1-800-321-2537

WWW.NM811.ORG



COORDINATES ARE
NAD 27 GRID
DISTANCES ARE GROUND

NEW MEXICO DAMAGE PREVENTION
CONSTRUCTION NOTE: UNDER GROUND UTILITIES MUST
BE VERIFIED BY CONTRACTOR PRIOR TO EXCAVATING.

FIELD DATE: 03/25/19		
SCALE: 1"= 100'	DATE: 04/10/19	
DRWN: MTL	APPVD: SJS	CREW: JM
PROJ. NO. 19-553 COONSKIN 28 - #1		

COG OPERATING, LLC.

COONSKIN 28 FEE SWD #1
LOCATED IN
SECTION 28, T24S, R35E
LEA COUNTY, NEW MEXICO



CONCHO



Construction Surveying Services
PO Box 2295, Alamogordo, NM 88311
(575) 443-6202 FAX (575) 443-1151

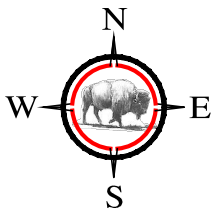


COPYRIGHT 2019

VICINITY MAP



SECTION 28, TOWNSHIP 24 SOUTH, RANGE 35 EAST
LEA COUNTY, NEW MEXICO

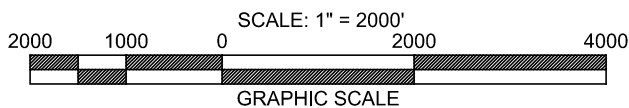


OPERATOR: COG OPERATING, LLC
LEASE: COONSKIN 28 FEE SWD
WELL NO: 1
ELEVATION: 3310'
LOCATION: 1130' FNL, 1960' FWL



1-800-321-2537

WWW.NM811.ORG



BEARINGS ARE
NAD 27 GRID
DISTANCES ARE GROUND

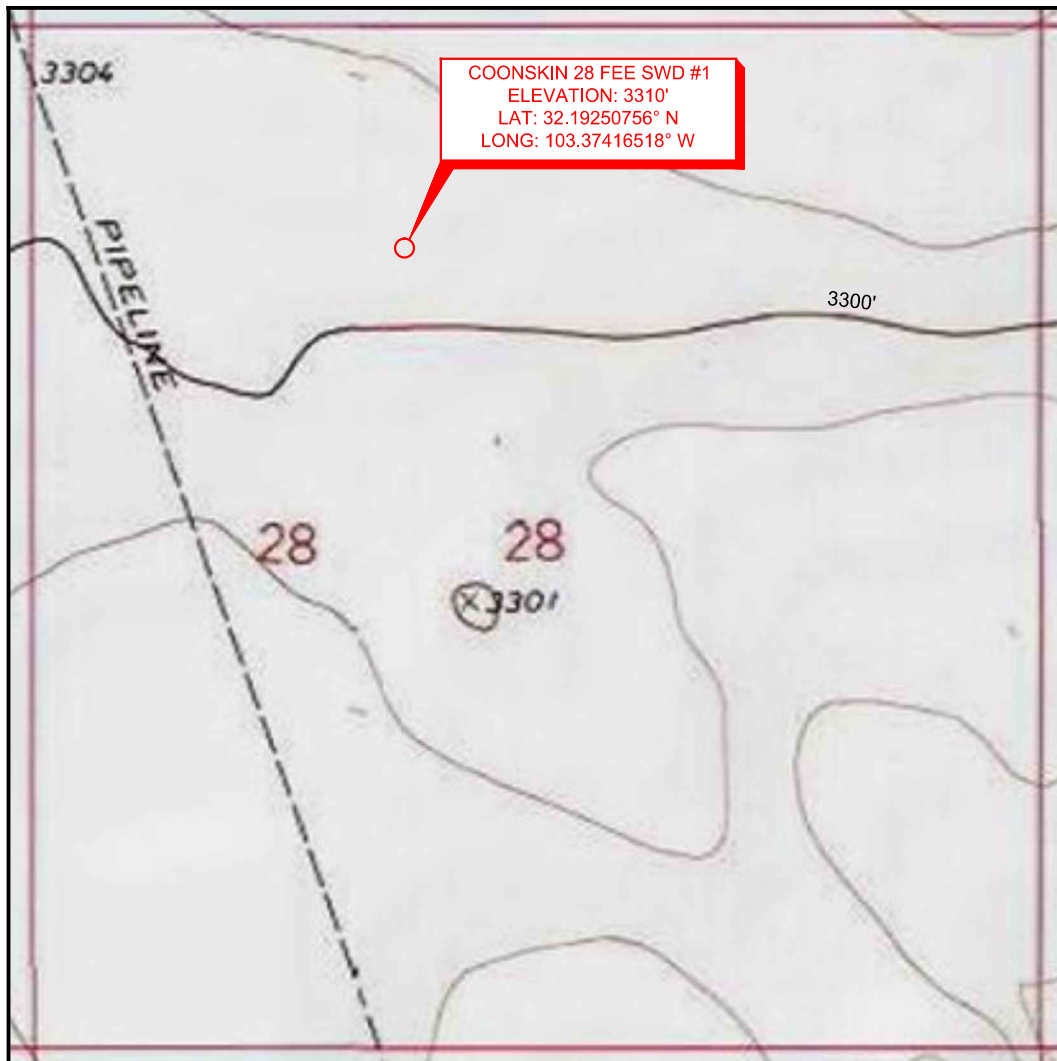
NEW MEXICO DAMAGE PREVENTION
CONSTRUCTION NOTE: UNDER GROUND UTILITIES MUST
BE VERIFIED BY CONTRACTOR PRIOR TO EXCAVATING.

FIELD DATE: 03/25/19 SCALE: 1"= 2000' DATE: 04/04/19 DRWN: DJD APPVD: SJS CREW: JM PROJ. NO. 19-553 COONSKIN 28 - #1		COG OPERATING, LLC. COONSKIN 28 FEE SWD #1 LOCATED IN SECTION 28, T24S, R35E LEA COUNTY, NEW MEXICO	 CONCHO  Construction Surveying Services PO Box 2295, Alamogordo, NM 88311 (575) 443-6202 FAX (575) 443-1151	
--	--	--	---	---

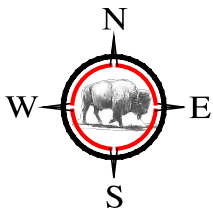
BISON CREEK SERVICES, LLC 24443 IH-20, BLDG. 9, WILLS POINT, TEXAS 79169 PHONE: 903-873-3600 WWW.BISON-CREEK.COM

COPYRIGHT 2019

LOCATION VERIFICATION MAP



SECTION 28, TOWNSHIP 24 SOUTH, RANGE 35 EAST
LEA COUNTY, NEW MEXICO



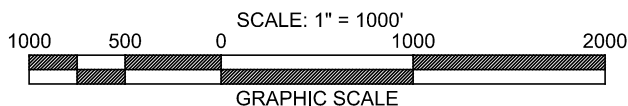
OPERATOR: COG OPERATING, LLC
LEASE: COONSKIN 28 FEE SWD
WELL NO: 1
ELEVATION: 3310'
LOCATION: 1130' FNL, 1960' FWL

USGS TOPO. SOURCE MAP:
ESRI "USA TOPO MAPS" NATIONAL
GEOGRAPHIC SOCIETY, I-CUBED (2014)
CONTOUR INTERVAL: 10'



1-800-321-2537

WWW.NM811.ORG



COORDINATES ARE
NAD 27 GRID
DISTANCES ARE GROUND

NEW MEXICO DAMAGE PREVENTION
CONSTRUCTION NOTE: UNDER GROUND UTILITIES MUST
BE VERIFIED BY CONTRACTOR PRIOR TO EXCAVATING.

FIELD DATE: 03/25/19		
SCALE: 1"= 1000'	DATE: 04/04/19	
DRWN: DJD	APPVD: SJS	CREW: JM
PROJ. NO. 19-553 COONSKIN 28 - #1		

COG OPERATING, LLC.

COONSKIN 28 FEE SWD #1
LOCATED IN
SECTION 28, T24S, R35E
LEA COUNTY, NEW MEXICO

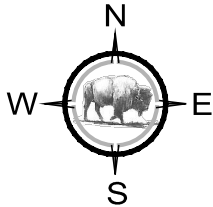


Construction Surveying Services
PO Box 2295, Alamogordo, NM 88311
(575) 443-6202 FAX (575) 443-1151

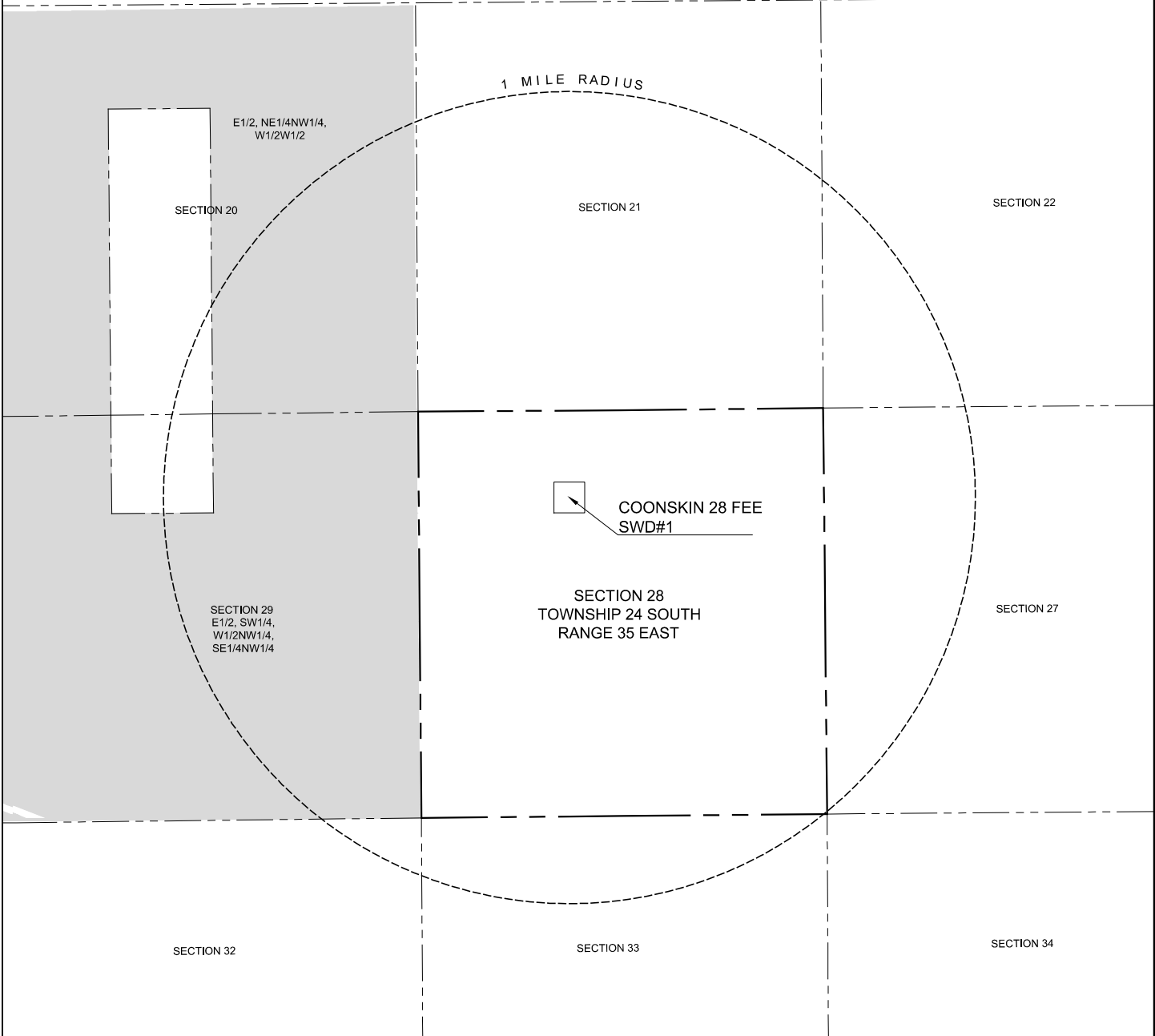


COPYRIGHT 2019

BISON CREEK SERVICES, LLC 24443 IH-20, BLDG. 9, WILLS POINT, TEXAS 79169 PHONE: 903-873-3600 WWW.BISON-CREEK.COM



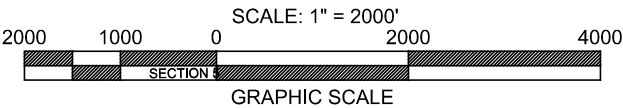
SECTION NO. 28
TOWNSHIP 24 SOUTH
RANGE 35 EAST
N. M. P. M. NEW MEXICO
LEA COUNTY, NEW MEXICO



NOTE: RESEARCH AND TITLE PROVIDED BY OTHERS. BISON CREEK LAND SERVICES, LLC IS NOT LIABLE AND/OR RESPONSIBLE FOR ANY TITLE ERRORS OR OMISSIONS RELATED TO THIS PLAT.

NOTE: BASIS OF BEARINGS ARE THE NEW MEXICO STATE PLANE COORDINATE SYSTEM, EAST ZONE NAD 27 AND COORDINATES AND DISTANCES ARE OF GRID VALUES. DISTANCES MUST BE MULTIPLIED BY A COMBINED SCALE FACTOR OF 0.99984743 TO OBTAIN SURFACE DISTANCES.

SHADED AREA =
PITCHFORK RACH



1-800-321-2537

WWW.NM811.ORG

NEW MEXICO DAMAGE PREVENTION
CONSTRUCTION NOTE: UNDER GROUND UTILITIES MUST
BE VERIFIED BY CONTRACTOR PRIOR TO EXCAVATING.

SCALE: 1"= 2000'	DATE: 04/05/19	
DRWN: DV	APPVD: JPK	CREW: RJR
AFE NO.		
PROJ. NO.19-553-COONSKIN 1 MILE		

CONCHO OPERATING, LLC.
EXHIBIT OF PROPOSED
COONSKIN 28 FEE SWD #1
(1 MILE RADIUS)
LOCATED IN
SECTION 28,
TOWNSHIP 24 SOUTH,
RANGE 35 EAST,
N. M. P. M. NEW MEXICO



CONCHO



Construction Surveying Services
PO Box 2295, Alamogordo, NM 88311
(575) 443-6202 FAX (575) 443-1151



COPYRIGHT 2019

BISON CREEK LAND SERVICES, LLC 24443 INTERSTAE 20, WILLS POINT, TEXAS 75169 PHONE: (903) 873 - 3600

Well Name: Stove Coonskin 28 Fee SWD #1

Location: C- Sec 28-T24S-R35E; 1130' FNL and 1960 FWL

Lea Co., NM

1. Casing Program

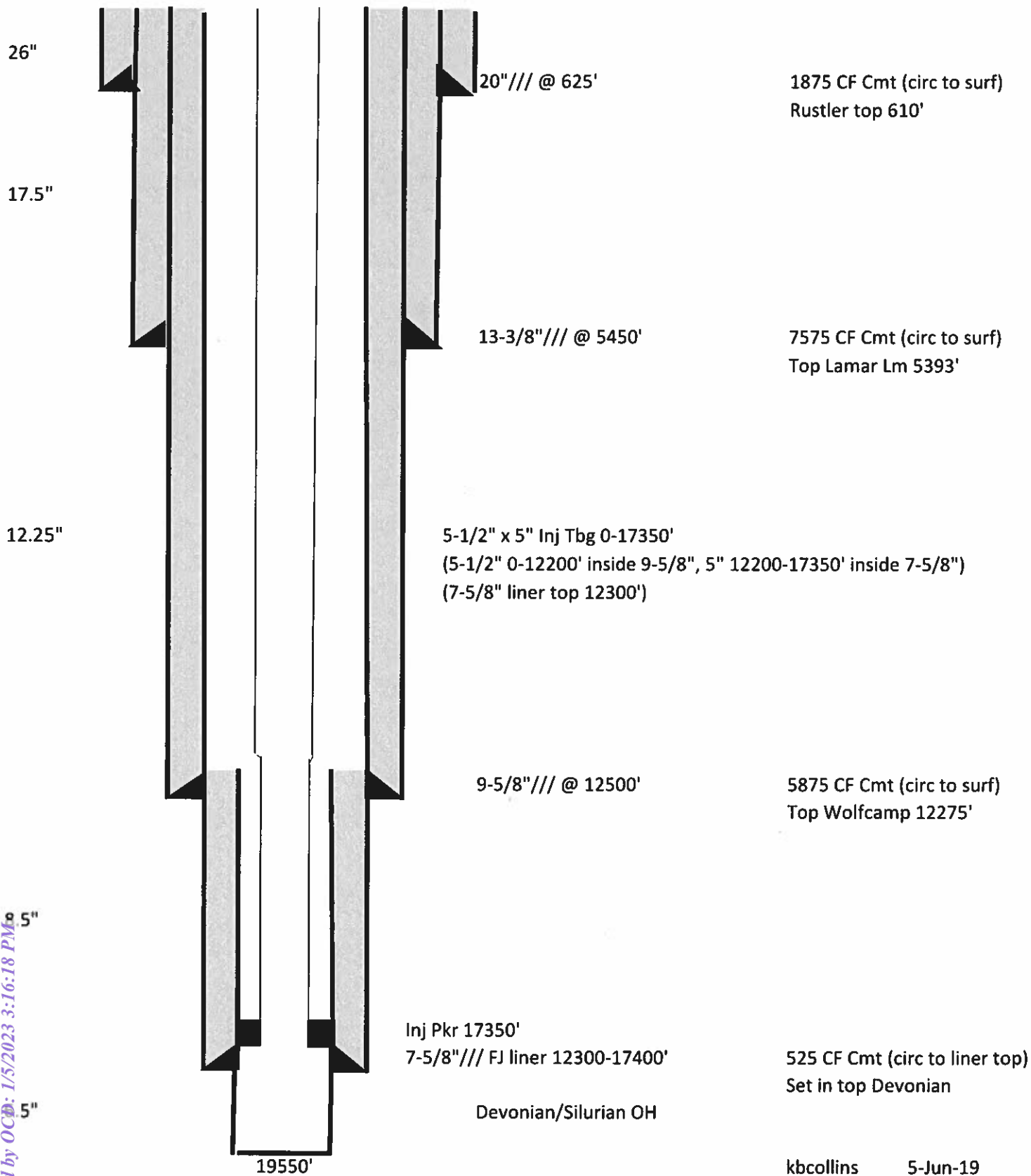
Hole Size	Casing Size	Set Depth	Sacks of Cement	Grade	Weight	Mud Weight	Top of Cement
26"	20"	625'	1205	K-55	94	8.4 ppg	Surface
17 ½"	13 3/8"	5450'	3550	HCL-80	54.5	10.0 ppg	Surface
12 ¼"	9 5/8"	12500'	2060	P110	53.5	10.0 ppg	Surface
8 1/5"	7 5/8"	17400'	440		29.7	10.0 ppg	12,600' (TOL)

2. Cementing Program

Casing		# Sks	Yld. Ft3/sk	Density (ppg)	Top of Cement	Excess	Slurry Description
Surf.	Lead	640	1.72	13.5	Surface	125%	Class C
Surf.	Tail	565	1.34	14.8	325	50%	Class C
1 st Inter.	Lead	3065	2.17	12.7	Surface	100%	85:15 Class C Poz-Mix
1 st Inter.	Tail	485	1.33	14.8	4950	75%	Class C
2 nd Inter. Stage 1	Lead	745	3.88	10.5	5350	50%	HSLD 9420
2 nd Inter. Stage 1	Tail	320	1.54	13.8	11500	50%	HSLD 125
2 nd Inter. Stage 2	Lead	850	2.18	11.8	Surface	0%	HSLD 6811R
2 nd Inter. Stage 2	Tail	145	1.33	14.8	4850	0%	Class C
Production Liner	Primary	440	1.34	15.6	12300	50%	HSLD 87

Coonskin 28 Fee SWD 1
1130' FNL, 1960' FWL
C-28-24s-35e
Lea, NM
30-025-xxxxx

Zero:
KB elev:
GL elev: 3310'



kbcollins 5-Jun-19

Well Name: Stove Coonskin 28 Fee SWD #1

Location: C- Sec 28-T24S-R35E; 1130' FNL and 1960 FWL

Lea Co., NM

1. Casing Program

Hole Size	Casing Size	Set Depth	Sacks of Cement	Grade	Weight	Mud Weight	Top of Cement
26"	20"	625'	1205	K-55	94	8.4 ppg	Surface
17 ½"	13 3/8"	5450'	3550	HCL-80	54.5	10.0 ppg	Surface
12 ¼"	9 5/8"	12500'	2060	P110	53.5	10.0 ppg	Surface
8 1/5"	7 5/8"	17400'	440		29.7	10.0 ppg	12,600' (TOL)

2. Cementing Program

Casing		# Sks	Yld. Ft3/sk	Density (ppg)	Top of Cement	Excess	Slurry Description
Surf.	Lead	640	1.72	13.5	Surface	125%	Class C
Surf.	Tail	565	1.34	14.8	325	50%	Class C
1 st Inter.	Lead	3065	2.17	12.7	Surface	100%	85:15 Class C Poz-Mix
1 st Inter.	Tail	485	1.33	14.8	4950	75%	Class C
2 nd Inter. Stage 1	Lead	745	3.88	10.5	5350	50%	HSLD 9420
2 nd Inter. Stage 1	Tail	320	1.54	13.8	11500	50%	HSLD 125
2 nd Inter. Stage 2	Lead	850	2.18	11.8	Surface	0%	HSLD 6811R
2 nd Inter. Stage 2	Tail	145	1.33	14.8	4850	0%	Class C
Production Liner	Primary	440	1.34	15.6	12300	50%	HSLD 87

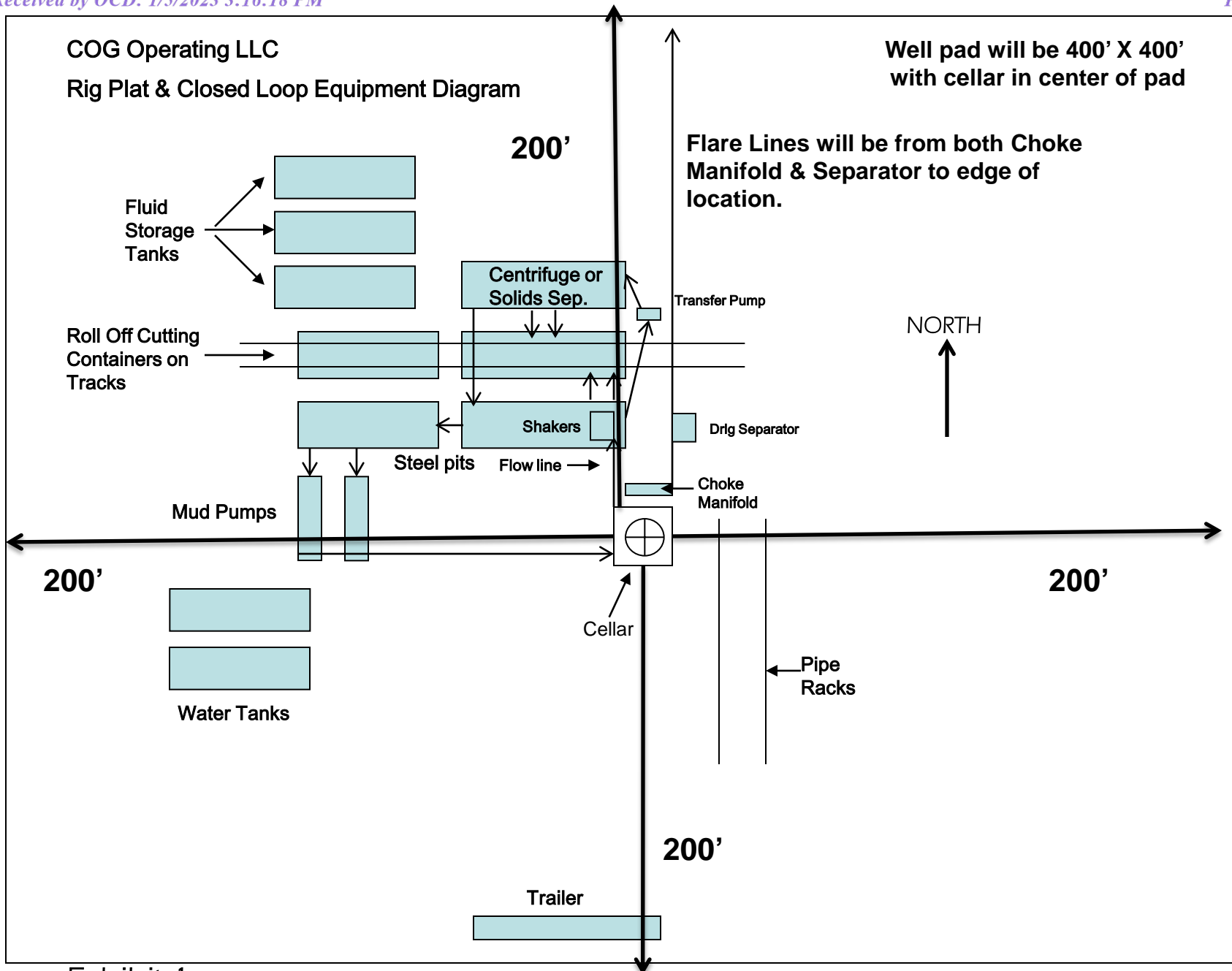


Exhibit 1

Well Name: Stove Coonskin 28 Fee SWD #1

Location: C- Sec 28-T24S-R35E; 1130' FNL and 1960 FWL

Lea Co., NM

1. Casing Program

Hole Size	Casing Size	Set Depth	Sacks of Cement	Grade	Weight	Mud Weight	Top of Cement
26"	20"	625'	1205	K-55	94	8.4 ppg	Surface
17 ½"	13 3/8"	5450'	3550	HCL-80	54.5	10.0 ppg	Surface
12 ¼"	9 5/8"	12500'	2060	P110	53.5	10.0 ppg	Surface
8 1/5"	7 5/8"	17400'	440		29.7	10.0 ppg	12,600' (TOL)

2. Cementing Program

Casing		# Sks	Yld. Ft3/sk	Density (ppg)	Top of Cement	Excess	Slurry Description
Surf.	Lead	640	1.72	13.5	Surface	125%	Class C
Surf.	Tail	565	1.34	14.8	325	50%	Class C
1 st Inter.	Lead	3065	2.17	12.7	Surface	100%	85:15 Class C Poz-Mix
1 st Inter.	Tail	485	1.33	14.8	4950	75%	Class C
2 nd Inter. Stage 1	Lead	745	3.88	10.5	5350	50%	HSLD 9420
2 nd Inter. Stage 1	Tail	320	1.54	13.8	11500	50%	HSLD 125
2 nd Inter. Stage 2	Lead	850	2.18	11.8	Surface	0%	HSLD 6811R
2 nd Inter. Stage 2	Tail	145	1.33	14.8	4850	0%	Class C
Production Liner	Primary	440	1.34	15.6	12300	50%	HSLD 87

Well Name: Stove Coonskin 28 Fee SWD #1

Location: C- Sec 28-T24S-R35E; 1130' FNL and 1960 FWL

Lea Co., NM

1. Casing Program

Hole Size	Casing Size	Set Depth	Sacks of Cement	Grade	Weight	Mud Weight	Top of Cement
26"	20"	625'	1205	K-55	94	8.4 ppg	Surface
17 ½"	13 3/8"	5450'	3550	HCL-80	54.5	10.0 ppg	Surface
12 ¼"	9 5/8"	12500'	2060	P110	53.5	10.0 ppg	Surface
8 1/5"	7 5/8"	17400'	440		29.7	10.0 ppg	12,600' (TOL)

2. Cementing Program

Casing		# Sks	Yld. Ft3/sk	Density (ppg)	Top of Cement	Excess	Slurry Description
Surf.	Lead	640	1.72	13.5	Surface	125%	Class C
Surf.	Tail	565	1.34	14.8	325	50%	Class C
1 st Inter.	Lead	3065	2.17	12.7	Surface	100%	85:15 Class C Poz-Mix
1 st Inter.	Tail	485	1.33	14.8	4950	75%	Class C
2 nd Inter. Stage 1	Lead	745	3.88	10.5	5350	50%	HSLD 9420
2 nd Inter. Stage 1	Tail	320	1.54	13.8	11500	50%	HSLD 125
2 nd Inter. Stage 2	Lead	850	2.18	11.8	Surface	0%	HSLD 6811R
2 nd Inter. Stage 2	Tail	145	1.33	14.8	4850	0%	Class C
Production Liner	Primary	440	1.34	15.6	12300	50%	HSLD 87

District I

1625 N. French Dr., Hobbs, NM 88240
 Phone:(575) 393-6161 Fax:(575) 393-0720

District II

811 S. First St., Artesia, NM 88210
 Phone:(575) 748-1283 Fax:(575) 748-9720

District III

1000 Rio Brazos Rd., Aztec, NM 87410
 Phone:(505) 334-6178 Fax:(505) 334-6170

District IV

1220 S. St Francis Dr., Santa Fe, NM 87505
 Phone:(505) 476-3470 Fax:(505) 476-3462

State of New Mexico
Energy, Minerals and Natural Resources
Oil Conservation Division
1220 S. St Francis Dr.
Santa Fe, NM 87505

CONDITIONS

Action 173186

CONDITIONS

Operator: COG OPERATING LLC 600 W Illinois Ave Midland, TX 79701	OGRID: 229137
	Action Number: 173186
	Action Type: [C-101] Drilling Non-Federal/Indian (APD)

CONDITIONS

Created By	Condition	Condition Date
pkautz	In addition to the requirements of the APD, operator shall complete the conditions contained in the UIC permit including logging (CBL for liner; mud logging, etc.), well testing, and reporting as stipulated.	7/6/2023
pkautz	Notify OCD 24 hours prior to casing & cement	7/6/2023
pkautz	Once the well is spud, to prevent ground water contamination through whole or partial conduits from the surface, the operator shall drill without interruption through the fresh water zone or zones and shall immediately set in cement the water protection string	7/6/2023
pkautz	Oil base muds are not to be used until fresh water zones are cased and cemented providing isolation from the oil or diesel. This includes synthetic oils. Oil based mud, drilling fluids and solids must be contained in a steel closed loop system	7/6/2023
pkautz	CEMENT MUST BE CIRCULATED ON ALL STRINGS	7/6/2023
pkautz	The Operator is to notify NMOCD by sundry (Form C-103) within ten (10) days of the well being spud	7/6/2023