

Office
District I – (575) 393-6161
1625 N. French Dr., Hobbs, NM 88240
District II – (575) 748-1283
811 S. First St., Artesia, NM 88210
District III – (505) 334-6178
1000 Rio Brazos Rd., Aztec, NM 87410
District IV – (505) 476-3460
1220 S. St. Francis Dr., Santa Fe, NM
87505

State of New Mexico
Energy, Minerals and Natural Resources

OIL CONSERVATION DIVISION
1220 South St. Francis Dr.
Santa Fe, NM 87505

Form C-103
Revised July 18, 2013

WELL API NO. 30-025-48809	
5. Indicate Type of Lease STATE <input type="checkbox"/> FEE <input type="checkbox"/>	
6. State Oil & Gas Lease No. NM138897, NM45706	
7. Lease Name or Unit Agreement Name CLINCHER FED COM	
8. Well Number 701H	
9. OGRID Number 373910	
10. Pool name or Wildcat WC-025 G-09 S253502D; UPR WOLFCAMP	
SUNDRY NOTICES AND REPORTS ON WELLS (DO NOT USE THIS FORM FOR PROPOSALS TO DRILL OR TO DEEPEN OR PLUG BACK TO A DIFFERENT RESERVOIR. USE "APPLICATION FOR PERMIT" (FORM C-101) FOR SUCH PROPOSALS.)	
1. Type of Well: Oil Well <input checked="" type="checkbox"/> Gas Well <input type="checkbox"/> Other <input type="checkbox"/>	
2. Name of Operator Franklin Mountain Energy LLC	
3. Address of Operator 44 Cook Street, Suite 1000, Denver, CO 80206	
4. Well Location Unit Letter <u>4</u> : <u>250</u> feet from the <u>NORTH</u> line and <u>395</u> feet from the <u>WEST</u> line Section <u>1</u> Township <u>25S</u> Range <u>35E</u> NMPM County <u>LEA</u>	
11. Elevation (Show whether DR, RKB, RT, GR, etc.) 3273	

12. Check Appropriate Box to Indicate Nature of Notice, Report or Other Data

NOTICE OF INTENTION TO:	SUBSEQUENT REPORT OF:
PERFORM REMEDIAL WORK <input type="checkbox"/>	REMEDIAL WORK <input type="checkbox"/>
TEMPORARILY ABANDON <input type="checkbox"/>	ALTERING CASING <input type="checkbox"/>
PULL OR ALTER CASING <input type="checkbox"/>	COMMENCE DRILLING OPNS. <input type="checkbox"/>
DOWNHOLE COMMINGLE <input type="checkbox"/>	P AND A <input type="checkbox"/>
CLOSED-LOOP SYSTEM <input type="checkbox"/>	CASING/CEMENT JOB <input type="checkbox"/>
OTHER: Amend C-102 <input type="checkbox"/>	OTHER: <input type="checkbox"/>

13. Describe proposed or completed operations. (Clearly state all pertinent details, and give pertinent dates, including estimated date of starting any proposed work). SEE RULE 19.15.7.14 NMAC. For Multiple Completions: Attach wellbore diagram of proposed completion or recompletion.

Franklin Mountain Energy, LLC (FME), Operator of the above captioned well, respectfully submits the attached, updated, C-102 for OCD record.

A corresponding sundry has also been submitted to the BLM; upon approval, the BLM sundry will be submitted to the OCD for record.

Once like approval is granted by the BLM, submit that approval to the Division.

Spud Date: 11.6.2021

Rig Release Date: 1.7.2022

I hereby certify that the information above is true and complete to the best of my knowledge and belief.

SIGNATURE Rachael Overbey TITLE Dir. Ops Planning & Regulatory DATE 7/13/2023

Type or print name Rachael Overbey E-mail address: roverbey@fmellc.com PHONE: 303-570-4057

For State Use Only

APPROVED BY: Dean R McClure TITLE Petroleum Engineer DATE 07/13/2023

Conditions of Approval (if any):

District I
1625 N. French Dr., Hobbs, NM 88240
Phone: (575) 393-6161 Fax: (575) 393-0720
District II
811 S. First St., Artesia, NM 88210
Phone: (575) 748-1283 Fax: (575) 748-9720
District III
1000 Rio Brazos Road, Aztec, NM 87410
Phone: (505) 334-6178 Fax: (505) 334-6170
District IV
1220 S. St. Francis Dr., Santa Fe, NM 87505
Phone: (505) 476-3460 Fax: (505) 476-3462

State of New Mexico
Energy, Minerals & Natural Resources Department
OIL CONSERVATION DIVISION
1220 South St. Francis Dr.
Santa Fe, NM 87505

Form C-102
Revised August 1, 2011
Submit one copy to appropriate
District Office

☒ AMENDED REPORT

WELL LOCATION AND ACREAGE DEDICATION PLAT

¹ API Number 30-025-48809		² Pool Code 98187		³ Pool Name WC-025 G-09 S253502D; UPR WOLFCAMP	
⁴ Property Code 330789		⁵ Property Name CLINCHER FED COM			⁶ Well Number 701H
⁷ OGRID No. 373910		⁸ Operator Name FRANKLIN MOUNTAIN ENERGY LLC			⁹ Elevation 3273.4'

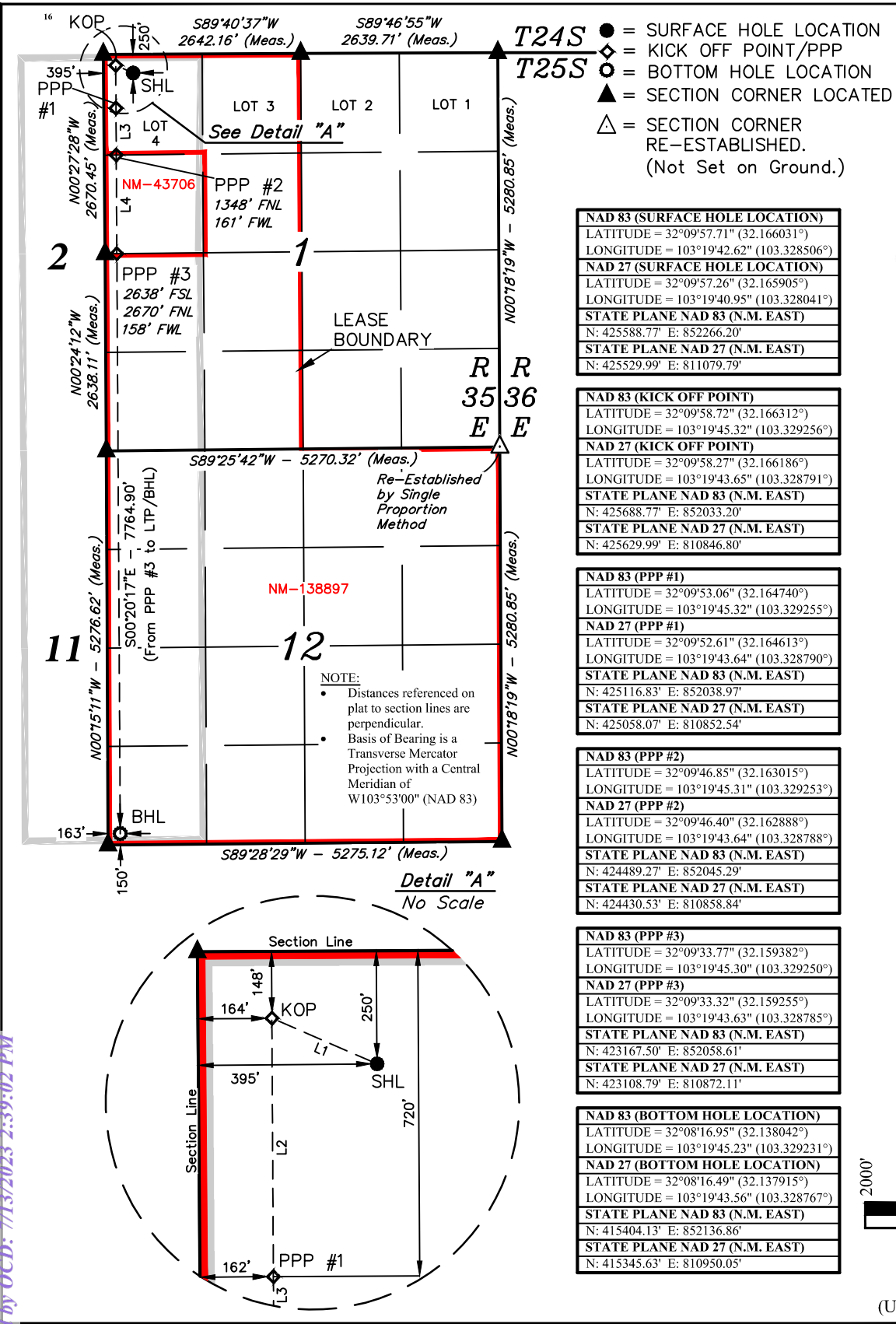
¹⁰ Surface Location

UL or lot no.	Section	Township	Range	Lot Idn	Feet from the	North/South line	Feet from the	East/West line	County
4	1	25S	35E		250	NORTH	395	WEST	LEA

¹¹ Bottom Hole Location If Different From Surface

UL or lot no.	Section	Township	Range	Lot Idn	Feet from the	North/South line	Feet from the	East/West line	County
M	12	25S	35E		150	SOUTH	163	WEST	LEA
¹² Dedicated Acres 641.51		¹³ Joint or Infill		¹⁴ Consolidation Code		¹⁵ Order No.			

No allowable will be assigned to this completion until all interests have been consolidated or a non-standard unit has been approved by the division.



- T24S** ● = SURFACE HOLE LOCATION
T25S ◆ = KICK OFF POINT/PPP
○ = BOTTOM HOLE LOCATION
▲ = SECTION CORNER LOCATED
△ = SECTION CORNER RE-ESTABLISHED.
(Not Set on Ground.)

NAD 83 (SURFACE HOLE LOCATION)	
LATITUDE = 32°09'57.71" (32.166031°)	
LONGITUDE = 103°19'42.62" (103.328506°)	
NAD 27 (SURFACE HOLE LOCATION)	
LATITUDE = 32°09'57.26" (32.165905°)	
LONGITUDE = 103°19'40.95" (103.328041°)	
STATE PLANE NAD 83 (N.M. EAST)	
N: 425588.77' E: 852266.20'	
STATE PLANE NAD 27 (N.M. EAST)	
N: 425529.99' E: 811079.79'	

NAD 83 (KICK OFF POINT)	
LATITUDE = 32°09'58.72" (32.166312°)	
LONGITUDE = 103°19'45.32" (103.329256°)	
NAD 27 (KICK OFF POINT)	
LATITUDE = 32°09'58.27" (32.166186°)	
LONGITUDE = 103°19'43.65" (103.328791°)	
STATE PLANE NAD 83 (N.M. EAST)	
N: 425688.77' E: 852033.20'	
STATE PLANE NAD 27 (N.M. EAST)	
N: 425629.99' E: 810846.80'	

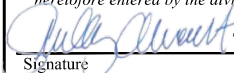
NAD 83 (PPP #1)	
LATITUDE = 32°09'53.06" (32.164740°)	
LONGITUDE = 103°19'45.32" (103.329255°)	
NAD 27 (PPP #1)	
LATITUDE = 32°09'52.61" (32.164613°)	
LONGITUDE = 103°19'43.64" (103.328790°)	
STATE PLANE NAD 83 (N.M. EAST)	
N: 425116.83' E: 852038.97'	
STATE PLANE NAD 27 (N.M. EAST)	
N: 425058.07' E: 810852.54'	

NAD 83 (PPP #2)	
LATITUDE = 32°09'46.85" (32.163015°)	
LONGITUDE = 103°19'45.31" (103.329253°)	
NAD 27 (PPP #2)	
LATITUDE = 32°09'46.40" (32.162888°)	
LONGITUDE = 103°19'43.64" (103.328788°)	
STATE PLANE NAD 83 (N.M. EAST)	
N: 424489.27' E: 852045.29'	
STATE PLANE NAD 27 (N.M. EAST)	
N: 424430.53' E: 810858.84'	

NAD 83 (PPP #3)	
LATITUDE = 32°09'33.77" (32.159382°)	
LONGITUDE = 103°19'45.30" (103.329250°)	
NAD 27 (PPP #3)	
LATITUDE = 32°09'33.32" (32.159255°)	
LONGITUDE = 103°19'43.63" (103.328785°)	
STATE PLANE NAD 83 (N.M. EAST)	
N: 423167.50' E: 852058.61'	
STATE PLANE NAD 27 (N.M. EAST)	
N: 423108.79' E: 810872.11'	

NAD 83 (BOTTOM HOLE LOCATION)	
LATITUDE = 32°08'16.95" (32.138042°)	
LONGITUDE = 103°19'45.23" (103.329231°)	
NAD 27 (BOTTOM HOLE LOCATION)	
LATITUDE = 32°08'16.49" (32.137915°)	
LONGITUDE = 103°19'43.56" (103.328767°)	
STATE PLANE NAD 83 (N.M. EAST)	
N: 415404.13' E: 852136.86'	
STATE PLANE NAD 27 (N.M. EAST)	
N: 415345.63' E: 810950.05'	

¹⁷ OPERATOR CERTIFICATION
I hereby certify that the information contained herein is true and complete to the best of my knowledge and belief, and that this organization either owns a working interest or unleased mineral interest in the land including the proposed bottom hole location or has a right to drill this well at this location pursuant to a contract with an owner of such a mineral or working interest, or to a voluntary pooling agreement or a compulsory pooling order heretofore entered by the division.

 7/22/2021
Signature Date

Shelly Albrecht
Printed Name

salbrecht@fmellc.com
E-mail Address

¹⁸ SURVEYOR CERTIFICATION
I hereby certify that the well location shown on this plat was plotted from field notes of actual surveys made by me or under my supervision, and that the same is true and correct to the best of my belief.

February 13, 2020

Date of Survey
Signature and Seal of Professional Surveyor:



Certificate Number:

LINE TABLE		
LINE	DIRECTION	LENGTH
L1	N66°31'57"W	253.59'
L2	S00°20'16"E	572.05'
L3	S00°20'17"E	627.68'
L4	S00°20'17"E	1322.03'



S C A L E

DRAWN BY: S.F. 02-24-20
REV: 2 A.T. 07-21-21
(UPDATE DEDICATED ACREAGE)

District I
1625 N. French Dr., Hobbs, NM 88240
Phone:(575) 393-6161 Fax:(575) 393-0720
District II
811 S. First St., Artesia, NM 88210
Phone:(575) 748-1283 Fax:(575) 748-9720
District III
1000 Rio Brazos Rd., Aztec, NM 87410
Phone:(505) 334-6178 Fax:(505) 334-6170
District IV
1220 S. St Francis Dr., Santa Fe, NM 87505
Phone:(505) 476-3470 Fax:(505) 476-3462

State of New Mexico
Energy, Minerals and Natural Resources
Oil Conservation Division
1220 S. St Francis Dr.
Santa Fe, NM 87505

COMMENTS

Action 239925

COMMENTS

Operator: Franklin Mountain Energy LLC 44 Cook Street, Suite 1000 Denver, CO 80206	OGRID: 373910
	Action Number: 239925
	Action Type: [C-103] NOI Change of Plans (C-103A)

COMMENTS

Created By	Comment	Comment Date
dmcclure	Per email communication, the Operator is requesting a change in HSU.	7/13/2023
dmcclure	For future submittals please include the requested change in the body of the sundry.	7/13/2023

District I
1625 N. French Dr., Hobbs, NM 88240
Phone:(575) 393-6161 Fax:(575) 393-0720
District II
811 S. First St., Artesia, NM 88210
Phone:(575) 748-1283 Fax:(575) 748-9720
District III
1000 Rio Brazos Rd., Aztec, NM 87410
Phone:(505) 334-6178 Fax:(505) 334-6170
District IV
1220 S. St Francis Dr., Santa Fe, NM 87505
Phone:(505) 476-3470 Fax:(505) 476-3462

State of New Mexico
Energy, Minerals and Natural Resources
Oil Conservation Division
1220 S. St Francis Dr.
Santa Fe, NM 87505

CONDITIONS

Action 239925

CONDITIONS

Operator: Franklin Mountain Energy LLC 44 Cook Street, Suite 1000 Denver, CO 80206	OGRID: 373910
	Action Number: 239925
	Action Type: [C-103] NOI Change of Plans (C-103A)

CONDITIONS

Created By	Condition	Condition Date
dmcclure	Once like approval is granted by the BLM, submit that approval to the Division.	7/13/2023