

Submit 1 Copy To Appropriate District  
Office  
District I – (575) 393-6161  
1625 N. French Dr., Hobbs, NM 88240  
District II – (575) 748-1283  
811 S. First St., Artesia, NM 88210  
District III – (505) 334-6178  
1000 Rio Brazos Rd., Aztec, NM 87410  
District IV – (505) 476-3460  
1220 S. St. Francis Dr., Santa Fe, NM  
87505

State of New Mexico  
Energy, Minerals and Natural Resources

OIL CONSERVATION DIVISION  
1220 South St. Francis Dr.  
Santa Fe, NM 87505

Form C-103  
Revised July 18, 2013

SUNDRY NOTICES AND REPORTS ON WELLS (DO NOT USE THIS FORM FOR PROPOSALS TO DRILL OR TO DEEPEN OR PLUG BACK TO A DIFFERENT RESERVOIR. USE "APPLICATION FOR PERMIT" (FORM C-101) FOR SUCH PROPOSALS.)		WELL API NO. 30-015-02142
1. Type of Well: Oil Well <input checked="" type="checkbox"/> Gas Well <input type="checkbox"/> Injection Well <input type="checkbox"/>		5. Indicate Type of Lease STATE <input type="checkbox"/> X FEE <input type="checkbox"/>
2. Name of Operator State of New Mexico formerly Canyon E&P Company		6. State Oil & Gas Lease No. 308697
3. Address of Operator 1625 N. French Drive, Hobbs, N 88240		7. Lease Name or Unit Agreement Name Artesia Metex Unit
4. Well Location Unit Letter <u>G</u> : <u>1650</u> feet from the <u>N</u> line and <u>2310</u> feet from the <u>E</u> line Section <u>30</u> Township <u>18S</u> Range <u>28E</u> NMPM Eddy County		8. Well Number. 043
11. Elevation (Show whether DR, RKB, RT, GR, etc.) DF: 3566'		9. OGRID Number 269864
		10. Pool name or Wildcat Artesia QU-GB-SA

12. Check Appropriate Box to Indicate Nature of Notice, Report or Other Data

NOTICE OF INTENTION TO:

PERFORM REMEDIAL WORK ☐ PLUG AND ABANDON ☐  
 TEMPORARILY ABANDON ☐ CHANGE PLANS ☐  
 PULL OR ALTER CASING ☐ MULTIPLE COMPL ☐  
 DOWNHOLE COMMINGLE ☐  
 CLOSED-LOOP SYSTEM ☐  
 OTHER: ☐

SUBSEQUENT REPORT OF:

REMEDIAL WORK ☐ ALTERING CASING ☐  
 COMMENCE DRILLING OPNS. ☐ P AND A ☒  
 CASING/CEMENT JOB ☐  
 OTHER: ☐

13. Describe proposed or completed operations. (Clearly state all pertinent details, and give pertinent dates, including estimated date of starting any proposed work). SEE RULE 19.15.7.14 NMAC. For Multiple Completions: Attach wellbore diagram of proposed completion or recompletion.

**6/20/23:** MOL from the Artesia Metex #45. Clean location with backhoe. Dig for BH, no BH connection found; have hole on surface. Spot equipment. RU rig. TOO H and LD rods, stuck, worked free. Cut wellhead connection. Flange up and NU BOP. TOO H w/ 2-7/8" tubing, was stuck, worked free. LD 40 joints, tubing dragging and hanging up while TOO H. Secure well and SDFD.

**6/21/23:** Travel to location. Held JSA. Check well pressures; no pressures, opened well to pit. TOO H with rest of tubing. Standby for A+ WL. Clean equipment and location. RU A+ WL, RIH w/ 6.125" GRJB, did not go through, dug further, found reduction from 8-1/8" to 5-1/2" and back to 7". RIH with CBL tools and run CBL. POOL, LD tools and RD WL. Call for 7" slip collar and a 7" to 8-5/8" swedge. Secure well and SDFD.

**6/22/23:** Travel to location. Held JSA. Check well pressures, no pressure, open well to pit. ND BOP. Dig around wellhead. Cut off 5-1/2" swedge and weld on slip collar. NU BOP. RU A+ WL and RIH w/ 6" GRJB, tagged @ 1480', come out clean JB. RIH w/ 6" GRJB, tagged @ 1510', come out w/ LD JBGR. RIH w/ 3.125" GRJB to try to tag packer @ 1950', did not tag, ran to 2000'. POOH and LD tools and RD WL. TIH w/ 63 joints of tubing to 2000'. RU pump to tubing and establish circulation until clean with 100 bbls w/ 25 sxs salt gel. Received approval for inside plug from 2000'-1657' ETOC.

**Plug #1.** Mix and pump 60 sxs of Type III cmt @ 14.8# 1.3 yield from 2000' to 1657'. LD 10 joints and TOO H, had issue with malfunctioning tongs, fixed. WOC overnight. Secure well and SDFD.

**6/23/23:** Travel to location. Held JSA. Check well pressure, no pressure, open well to pit. TIH and tag Plug #1 @ 1732'. PUH to 1480', RU pump to tubing and establish circulation. Pressure test casing to 500#, test OK.

**Plug #2.** Mix and pump 25 sxs Type III cmt @ 14.8# 1.3 yield from 1480' to 1335'. TOO H and WOC for 3.5 hrs. TIH and tag Plug #2 @ 1372'. TOO H. RU A+ WL, RIH and perf @ 890', RD WL. TIH w/ 7" packer and set. Try to establish injection rate, note able to circulate, pressured up to 500#. TOOL w/ packer, tong malfunctioning. Worked on tongs and backups. Secure well and SDFD.

**6/26/23:** Travel to location. Held JSA. Check well pressures, no pressure. TIH to 950', RU pump to tubing and establish circulation.

**Plug #3.** Mix and pump 25 sxs Type III cmt @ 14.8# 1.3 yield from 950'-807'. WOC 4hrs, TIH to tag Plug #3, did not tag plug, TOO H. TIH w/ 7" packer, establish injection rate, pressured up to 500#, bled down slow broke over and established rate.

**Plug #3A.** Mix and pump 62 sxs Type III cmt @ 14.8# 1.3 yield from 890' to 710'; 31 sxs inside, 31 sxs outside. TOO H and LD tubing, remove packer. SDFD.

6/27/23: Travel to location. Held JSA. Check well pressures, no pressure, open well to pit. TIH and tag Plug #3A @ 702'.  
TOOH and RU A+ WL. RIH and perf @ 630', POOH and RD WL. TIH w/ 7" packer and set. RU pump to tubing, attempt to get  
injection rate, no rate. TOOH and LD packer. TIH to 680' and RU pump to tubing and establish circulation.  
**Plug #4.** Mix and pump 25 sxs Type III cmt @ 14.8# 1.3 yield from 680' to 535'. WOC 3 hrs, TIH and tag Plug #4 @ 540'.  
TOOH. RU A+ WL, RIH and perf @ 220', POOH and RD WL. Establish injection rate and circulation.  
**Plug #5.** Mix and pump 121 sxs Type III cmt @ 14.8# 1.3 yield from 220' to 0'. ND BOP, RD rig and pumping equipment.  
Clean and secure location. MOL. SDFN.  
6/28/23: Travel to location. Dig out wellhead with backhoe. Cut off wellhead, TOC @ surface. Weld on Plug and Abandonment  
marker. Backfill wellhead cellar. MOL.

I hereby certify that the information above is true and complete to the best of my knowledge and belief.

SIGNATURE *Neil Lindenmeyer* TITLE ENGINEER TECH DATE 7/06/23

Type or print name Neil Lindenmeyer E-mail address: neilleap@uswell.com PHONE: 505-486-6958

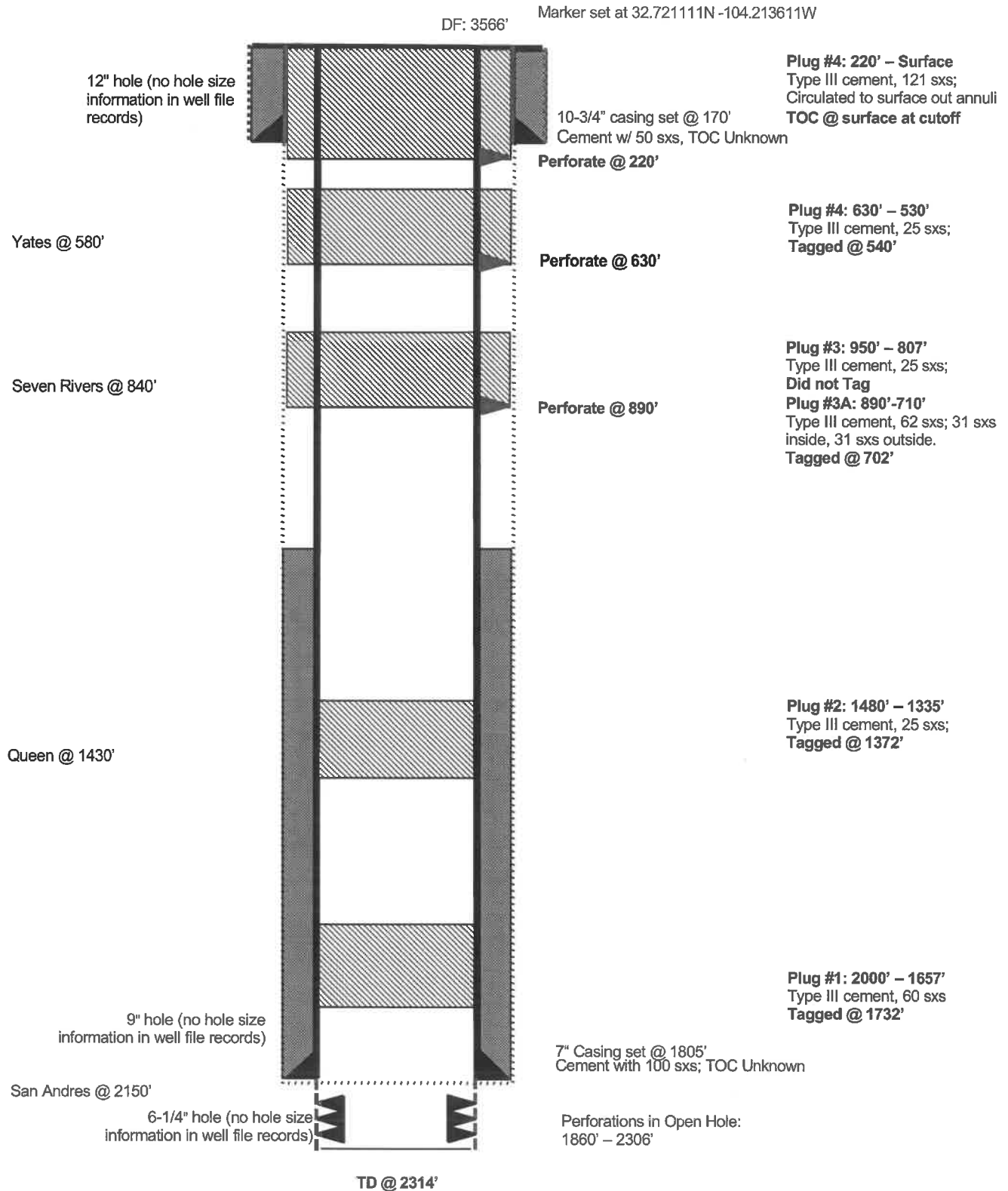
**For State Use Only**

APPROVED BY: John Harrison TITLE Petroleum Specialist DATE 7/19/23

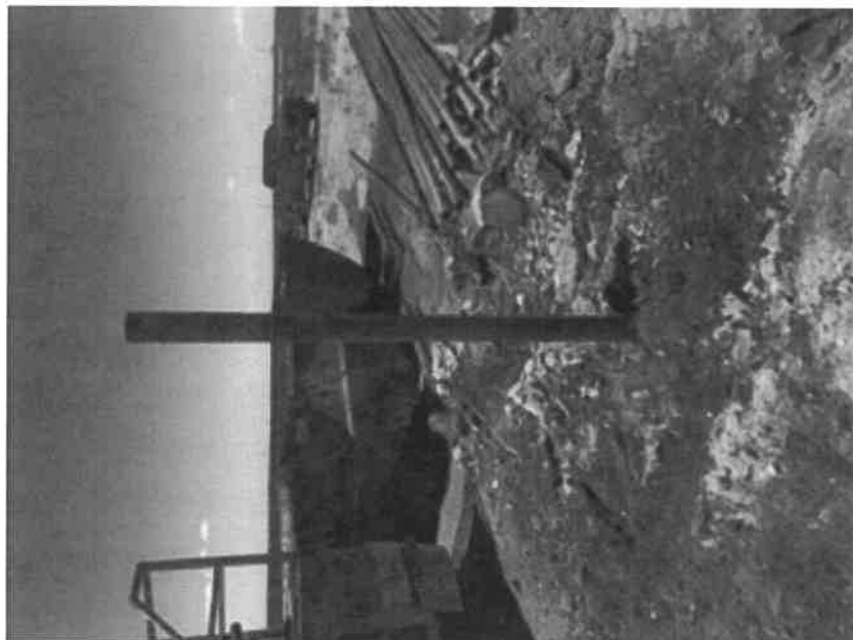
Conditions of Approval (if any):

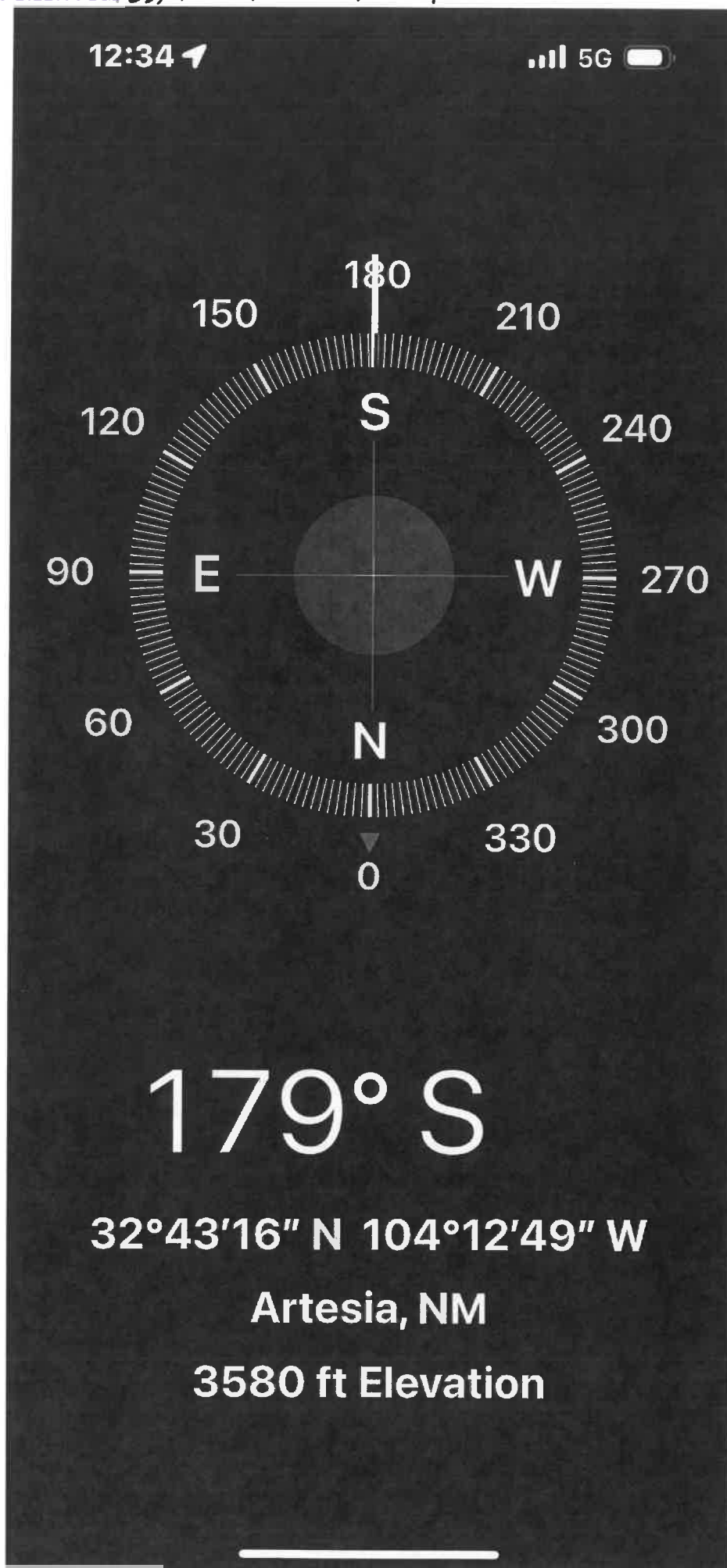
**Artesia Metex Unit 043****As Plugged on 6/28/2023**

Artesia Queen-Grayburg-San Andres  
Unit G, 1650' FNL & 2310' FEL, Section 30, T18S, R28E  
Eddy County, NM, API #30-015-02142



ARTESIA METEX Unit #43  
API 30-015-20142









**District I**  
1625 N. French Dr., Hobbs, NM 88240  
Phone:(575) 393-6161 Fax:(575) 393-0720  
**District II**  
811 S. First St., Artesia, NM 88210  
Phone:(575) 748-1283 Fax:(575) 748-9720  
**District III**  
1000 Rio Brazos Rd., Aztec, NM 87410  
Phone:(505) 334-6178 Fax:(505) 334-6170  
**District IV**  
1220 S. St Francis Dr., Santa Fe, NM 87505  
Phone:(505) 476-3470 Fax:(505) 476-3462

State of New Mexico  
Energy, Minerals and Natural Resources  
Oil Conservation Division  
1220 S. St Francis Dr.  
Santa Fe, NM 87505

CONDITIONS

Action 237340

CONDITIONS

Operator: A-PLUS WELL SERVICE, INC. P.O. Box 1979 Farmington, NM 87499	OGRID: 370317
	Action Number: 237340
	Action Type: [C-103] Sub. Plugging (C-103P)

CONDITIONS

Created By	Condition	Condition Date
john.harrison	None	7/19/2023