

Submit One Copy To Appropriate District Office
 District I
 1625 N. French Dr., Hobbs, NM 88240
 District II
 811 S. First St., Artesia, NM 88210
 District III
 1000 Rio Brazos Rd., Aztec, NM 87410
 District IV
 1220 S. St. Francis Dr., Santa Fe, NM 87505

State of New Mexico
 Energy, Minerals and Natural Resources

OIL CONSERVATION DIVISION
 1220 South St. Francis Dr.
 Santa Fe, NM 87505

Form C-103

Revised November 3, 2011

SUNDRY NOTICES AND REPORTS ON WELLS (DO NOT USE THIS FORM FOR PROPOSALS TO DRILL OR TO DEEPEN OR PLUG BACK TO A DIFFERENT RESERVOIR. USE "APPLICATION FOR PERMIT" (FORM C-101) FOR SUCH PROPOSALS.)		WELL API NO. 30-005-60597																				
1. Type of Well: <input checked="" type="checkbox"/> Oil Well <input type="checkbox"/> Gas Well <input type="checkbox"/> Other		5. Indicate Type of Lease STATE <input checked="" type="checkbox"/> FEE <input type="checkbox"/>																				
2. Name of Operator Blue Sky NM Inc		6. State Oil & Gas Lease No.																				
3. Address of Operator 7941 Katy Freeway Suite 522 Houston, TX 77024		7. Lease Name or Unit Agreement Name Twin Lakes San Andres																				
4. Well Location Unit Letter <u>N</u> : 330 feet from the <u>S</u> line and 1650 feet from the <u>W</u> line Section <u>30</u> Township <u>08S</u> Range <u>29E</u> NMPM _____ County <u>Chaves</u>		8. Well Number 014																				
11. Elevation (Show whether DR, RKB, RT, GR, etc.)		9. OGRID Number 300825																				
10. Pool name or Wildcat Twin Lake ; San Andres																						
12. Check Appropriate Box to Indicate Nature of Notice, Report or Other Data																						
<table border="0"> <tr> <td colspan="2"> NOTICE OF INTENTION TO: </td> <td colspan="2"> SUBSEQUENT REPORT OF: </td> </tr> <tr> <td>PERFORM REMEDIAL WORK <input type="checkbox"/></td> <td>PLUG AND ABANDON <input type="checkbox"/></td> <td>REMEDIAL WORK <input type="checkbox"/></td> <td>ALTERING CASING <input type="checkbox"/></td> </tr> <tr> <td>TEMPORARILY ABANDON <input type="checkbox"/></td> <td>CHANGE PLANS <input type="checkbox"/></td> <td>COMMENCE DRILLING OPNS. <input type="checkbox"/></td> <td>P AND A <input checked="" type="checkbox"/></td> </tr> <tr> <td>PULL OR ALTER CASING <input type="checkbox"/></td> <td>MULTIPLE COMPL <input type="checkbox"/></td> <td>CASING/CEMENT JOB <input type="checkbox"/></td> <td></td> </tr> <tr> <td colspan="2"> OTHER: <input type="checkbox"/> </td> <td colspan="2"> <input checked="" type="checkbox"/> Location is ready for OCD inspection after P&A </td> </tr> </table>			NOTICE OF INTENTION TO:		SUBSEQUENT REPORT OF:		PERFORM REMEDIAL WORK <input type="checkbox"/>	PLUG AND ABANDON <input type="checkbox"/>	REMEDIAL WORK <input type="checkbox"/>	ALTERING CASING <input type="checkbox"/>	TEMPORARILY ABANDON <input type="checkbox"/>	CHANGE PLANS <input type="checkbox"/>	COMMENCE DRILLING OPNS. <input type="checkbox"/>	P AND A <input checked="" type="checkbox"/>	PULL OR ALTER CASING <input type="checkbox"/>	MULTIPLE COMPL <input type="checkbox"/>	CASING/CEMENT JOB <input type="checkbox"/>		OTHER: <input type="checkbox"/>		<input checked="" type="checkbox"/> Location is ready for OCD inspection after P&A	
NOTICE OF INTENTION TO:		SUBSEQUENT REPORT OF:																				
PERFORM REMEDIAL WORK <input type="checkbox"/>	PLUG AND ABANDON <input type="checkbox"/>	REMEDIAL WORK <input type="checkbox"/>	ALTERING CASING <input type="checkbox"/>																			
TEMPORARILY ABANDON <input type="checkbox"/>	CHANGE PLANS <input type="checkbox"/>	COMMENCE DRILLING OPNS. <input type="checkbox"/>	P AND A <input checked="" type="checkbox"/>																			
PULL OR ALTER CASING <input type="checkbox"/>	MULTIPLE COMPL <input type="checkbox"/>	CASING/CEMENT JOB <input type="checkbox"/>																				
OTHER: <input type="checkbox"/>		<input checked="" type="checkbox"/> Location is ready for OCD inspection after P&A																				
<input checked="" type="checkbox"/> All pits have been remediated in compliance with OCD rules and the terms of the Operator's pit permit and closure plan. <input checked="" type="checkbox"/> Rat hole and cellar have been filled and leveled. Cathodic protection holes have been properly abandoned. <input checked="" type="checkbox"/> A steel marker at least 4" in diameter and at least 4' above ground level has been set in concrete. It shows the																						

OPERATOR NAME, LEASE NAME, WELL NUMBER, API NUMBER, QUARTER/QUARTER LOCATION OR UNIT LETTER, SECTION, TOWNSHIP, AND RANGE. ALL INFORMATION HAS BEEN WELDED OR PERMANENTLY STAMPED ON THE MARKER'S SURFACE.

- ☐ The location has been leveled as nearly as possible to original ground contour and has been cleared of all junk, trash, flow lines and other production equipment.
- ☐ Anchors, dead men, tie downs and risers have been cut off at least two feet below ground level.
- ☐ If this is a one-well lease or last remaining well on lease, the battery and pit location(s) have been remediated in compliance with OCD rules and the terms of the Operator's pit permit and closure plan. All flow lines, production equipment and junk have been removed from lease and well location.
- ☐ All metal bolts and other materials have been removed. Portable bases have been removed. (Poured onsite concrete bases do not have to be removed.)
- ☐ All other environmental concerns have been addressed as per OCD rules.
- ☐ Pipelines and flow lines have been abandoned in accordance with 19.15.35.10 NMAC. All fluids have been removed from non-retrieved flow lines and pipelines.
- ☐ If this is a one-well lease or last remaining well on lease: all electrical service poles and lines have been removed from lease and well location, except for utility's distribution infrastructure.

When all work has been completed, return this form to the appropriate District office to schedule an inspection.

SIGNATURE Ethan Wakefield TITLE Authorized Representative DATE 5/22/23

TYPE OR PRINT NAME Ethan Wakefield E-MAIL: e.wakefield@dwsrigs.com PHONE (405) 343-7736

For State Use Only

APPROVED BY: John Harrison TITLE Petroleum Specialist DATE 7/19/23

Blue Sky NM

Plug And Abandonment End Of Well Report

Twin Lakes San Andres #014

330' FSL & 1650' FWL, Section 30, 08S, 29E

Chaves County, NM / API 30-005-60597

Work Summary:

- 5/12/23** Made BLM and NMOCD P&A operations notifications at 9:00 AM MST.
- 5/13/23** Arrived on location and held safety meeting. Prepared location using backhoe. Built road to move rig in. Moved equipment onto location. R/U P&A rig. ND WH, NU BOP, R/U floor. Prepped and tallied 2-3/8" work string. P/U 4.5" casing scraper. TIH and tagged at 2590'. TOOH. L/D scraper. Installed 4.5" CR. TIH and set at 2585'. R/U cementing services. Successfully circulated hole with 6 bbls, pumped 48 bbls total. Attempted to pressure test casing but was unsuccessful. R/D cementers. TOOH. Shut in and secured well for the day.
- 5/14/23** Arrived on location and held safety meeting. Checked well pressures. Tubing: 0 psi, Casing: 0 psi Bradenhead: 0 psi. Bleed down well. R/U wireline services. Wireline truck experienced issues. Waited for repairs. RIH and logged well. POOH. R/D wireline. TIH to 2585'. R/U cementing services. Pumped plug #1 from 2585' to approximately 1936'. R/D cementers. L/D 20 joints and TOOH. WOC 4 hours. TIH and tagged TOC at 1950'. R/U cementing services. Attempted to pressure test casing but was unsuccessful. Pumped mud/gel spacer from 1950' to 1540'. R/D cementers. L/D 13 joints and TOOH. Shut in and secured well for the day.
- 5/15/23** Arrived on location and held safety meeting. Checked well pressures. Tubing: 0 psi, Casing: 0 psi Bradenhead: 0 psi. Bleed down well. R/U wireline services. RIH and perforated at 1540'. POOH. TIH with 4.5" packer. Set packer at 1040'. R/U cementing services. Successfully

established an injection rate. Pumped plug #2 from 1540' to approximately 1165' with 29 sacks in 4.5" casing and 63 sacks outside. R/D cementers. Unset packer and TOOH. WOC 4 hours. TIH and tagged plug #2 at 1135'. Pumped mud/gel spacer from 1135' to 822'. L/D 10 joints and TOOH. P/U packer. TIH and set at 346'. Attempted to pressure test casing below the packer but was unsuccessful. Attempted to pressure test casing above the packer but again was unsuccessful. Unset packer and TOOH. L/D packer. TIH to 851'. R/U cementing services. Pumped plug #3 from 851' to approximately 347'. R/D cementers. L/D 13 joints and TOOH. WOC overnight. Shut in and secured well.

5/16/23 Arrived on location and held safety meeting. Checked well pressures. Tubing: 0 psi, Casing: 0 psi Bradenhead: 0 psi. Bleed down well. TIH and tagged plug #3 at 535'. R/U cementing services. Continued pumping plug #3 from 535' to 445' with 7 sx. R/D cementers. TOOH. WOC 4 hours. TIH and tagged plug #3 at 445'. Pumped mud/gel spacer from 445' to 170'. TOOH. R/U wireline services. RIH and perforated at 170'. POOH. P/U CR due to hole in casing. Set CR at 160'. R/U cementing services. Pumped plug #4 through CR, into perforations and out BH valve at surface. Stung out of CR and continued pumping plug #4 from 160 to surface. Pumped 77 sacks through CR and 12 sacks above CR. R/D cementers. R/D floor, ND BOP, NU WH. R/D all equipment. MOL.

5/26/23 Arrived on location and held safety meeting. Used backhoe to safely expose wellhead. Set up welding unit on location. Performed wellhead cutoff. Removed old wellhead. Tagged cement at 20' inside and 15' outside. Filled casing to surface with 12 sacks. Welder attached marker per NMOCD regulations.

Plug Summary:

Plug #1: (San Andres Perforations and Formation Top, 2,585'-1,950', 49 Sacks Type I/II Cement)

TIH and set CR at 2585'. R/U cementing services. Successfully circulated hole with 6 bbls, pumped 48 bbls total. Attempted to pressure test casing but was unsuccessful. TOOH for wireline. TIH to 2585'. R/U cementing services. Pumped plug #1 from 2585' to approximately 1936'. R/D cementers. L/D 20 joints and TOOH. WOC 4 hours. TIH and tagged TOC at 1950'.

Plug #2: (Queen Formation Top 1,540'-1,135', 92 Sacks Type I/II Cement)

R/U wireline services. RIH and perforated at 1540'. POOH. TIH with 4.5" packer. Set packer at 1040'. R/U cementing services. Successfully

established an injection rate. Pumped plug #2 from 1540' to approximately 1165' with 29 sacks in 4.5" casing and 63 sacks outside. R/D cementers. Unset packer and TOOH. WOC 4 hours. TIH and tagged plug #2 at 1135'.

Plug #3: (Yates Formation Top, 851' to 445', 46 Sacks Type I/II Cement)

P/U packer. TIH and set at 346'. Attempted to pressure test casing below the packer but was unsuccessful. Attempted to pressure test casing above the packer but again was unsuccessful. Unset packer and TOOH. L/D packer. TIH to 851'. R/U cementing services. Pumped plug #3 from 851' to approximately 347'. R/D cementers. L/D 13 joints and TOOH. WOC. TIH and tagged plug #3 at 535'. R/U cementing services. Continued pumping plug #3 from 535' to 445' with 7 sx. R/D cementers. TOOH. WOC 4 hours. TIH and tagged plug #3 at 445'.

Plug #4: (Surface Casing Shoe, 170' to Surface', 101 Sacks Type I/II Cement (12 sx for top off))

R/U wireline services. RIH and perforated at 170'. POOH. P/U CR. Due to hole in casing set CR at 160'. R/U cementing services. Pumped plug #4 through CR, into perforations and out BH valve at surface. Stung out of CR and continued pumping plug #4 from 160 to surface. Pumped 77 sacks through CR and 12 sacks above CR. Performed wellhead cutoff. Removed old wellhead. Tagged cement at 20' inside and 15' outside. Filled casing to surface with 12 sacks. Welder attached marker per NMOCD regulations.

Completed Wellbore Diagram

Blue Sky NM Inc.
Twin Lakes San Andres Unit #014
API: 30-005-60597
Chaves County, New Mexico

Surface Casing

8.625" 20# @ 120 ft
OH: 12.5'

Plug 4

170 feet - surface
170 foot plug
101 Sacks of Type III Cement

Plug 3

851 feet - 445 feet
406 foot plug
46 Sacks of Type III Cement

Plug 2

1540 feet - 1135 feet
405 foot plug
92 Sacks of Type III Cement

Plug 1

2585 feet - 1950 feet
635 foot plug
49 sacks of Type III Cement

Perforations

2647 feet - 2693 feet

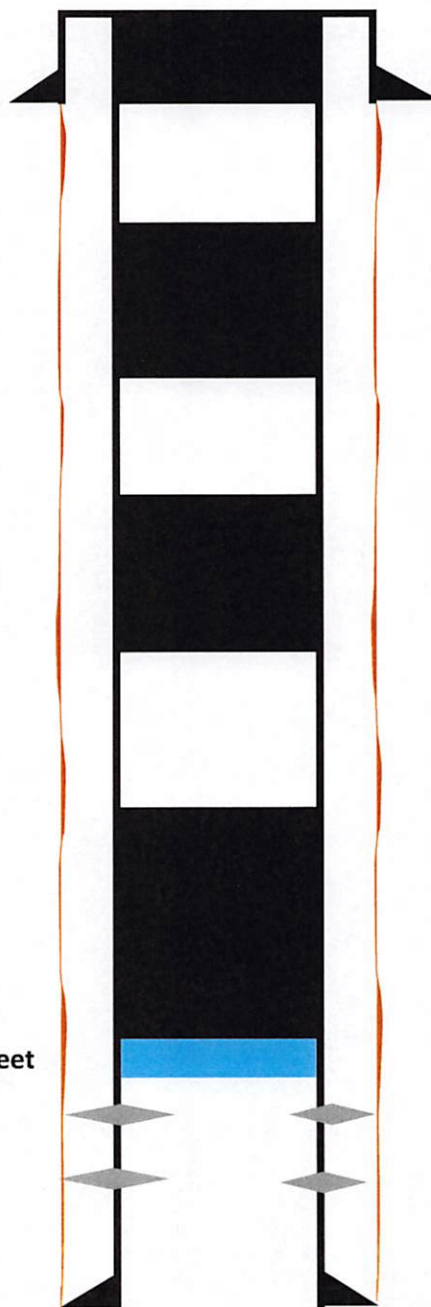
Formation

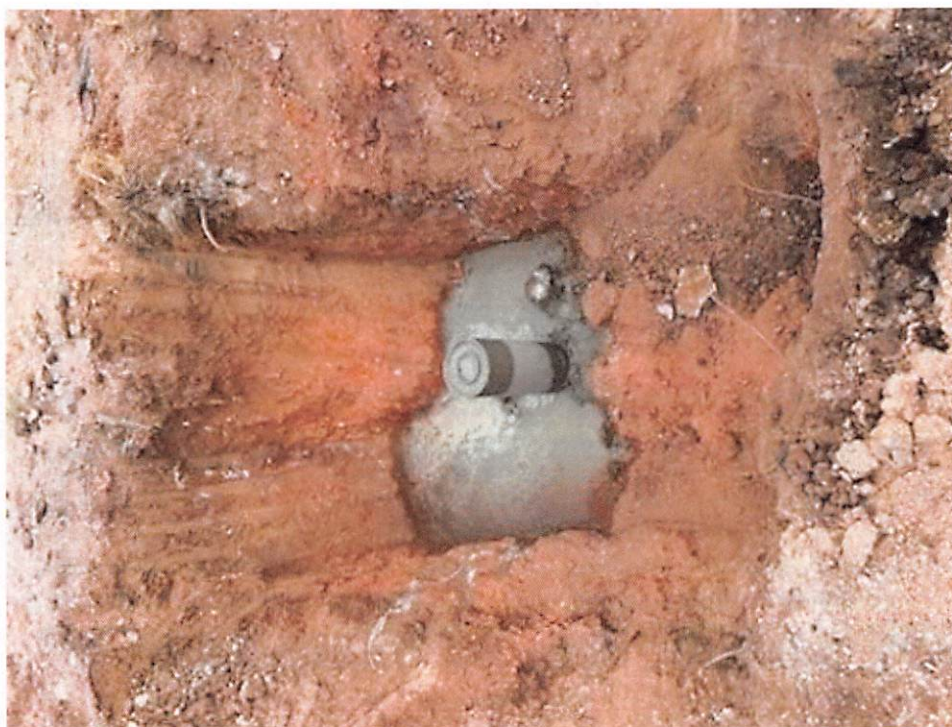
Yates - 772 feet
Queen - 1490 feet
San Andres - 2036 feet

Retainer @ 2585 feet

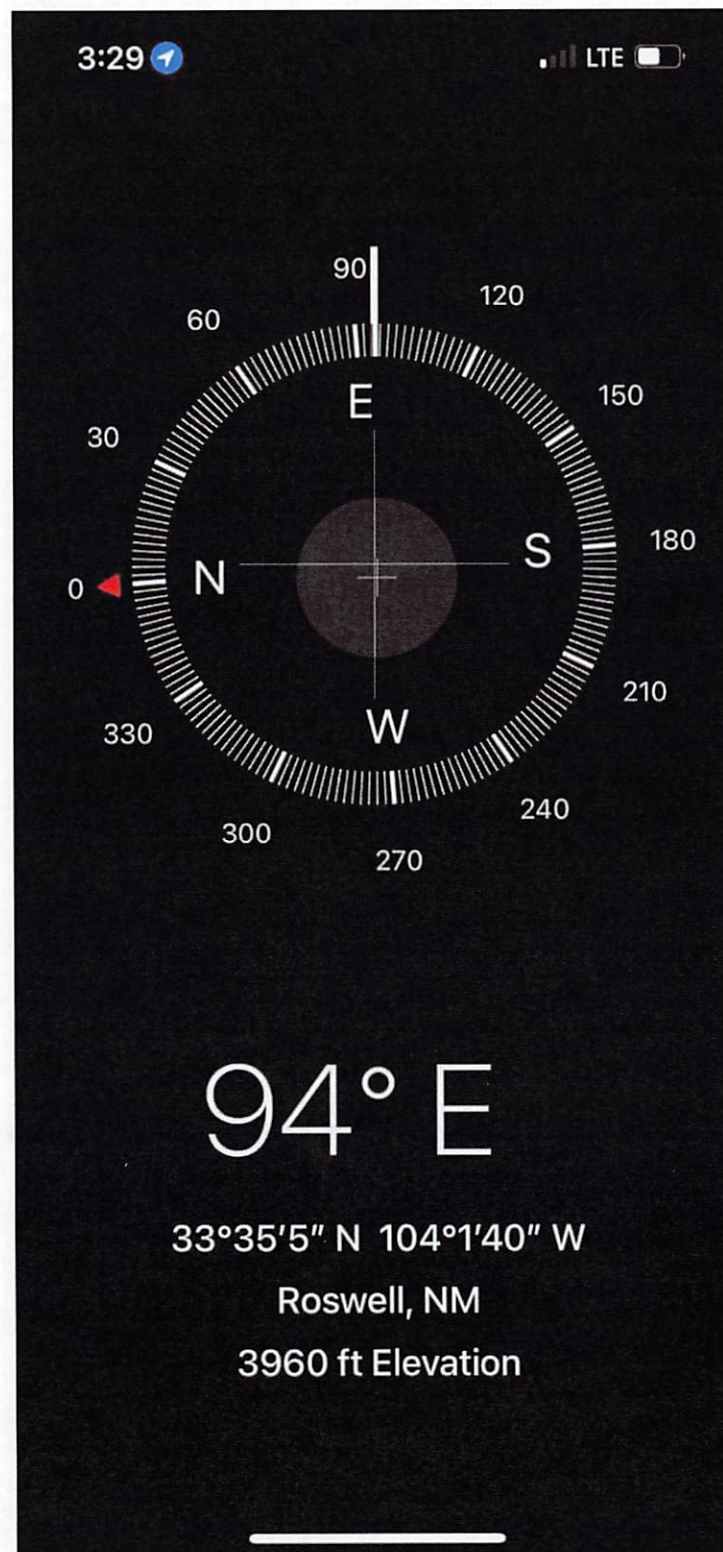
Production Casing

4.5" 9.5# @ 2875 feet
OH: 7.5"











District I
1625 N. French Dr., Hobbs, NM 88240
Phone:(575) 393-6161 Fax:(575) 393-0720
District II
811 S. First St., Artesia, NM 88210
Phone:(575) 748-1283 Fax:(575) 748-9720
District III
1000 Rio Brazos Rd., Aztec, NM 87410
Phone:(505) 334-6178 Fax:(505) 334-6170
District IV
1220 S. St Francis Dr., Santa Fe, NM 87505
Phone:(505) 476-3470 Fax:(505) 476-3462

State of New Mexico
Energy, Minerals and Natural Resources
Oil Conservation Division
1220 S. St Francis Dr.
Santa Fe, NM 87505

CONDITIONS

Action 242308

CONDITIONS

Operator: J.A. Drake Well Service Inc. 607 W Pinon Farmington, NM 87401	OGRID: 330485
	Action Number: 242308
	Action Type: [C-103] Sub. Plugging (C-103P)

CONDITIONS

Created By	Condition	Condition Date
john.harrison	None	7/20/2023