

Submit 1 Copy To Appropriate District

Office

District I – (575) 393-6161

1625 N. French Dr., Hobbs, NM 88240

District II – (575) 748-1283

811 S. First St., Artesia, NM 88210

District III – (505) 334-6178

1000 Rio Brazos Rd., Aztec, NM 87410

District IV – (505) 476-3460

1220 S. St. Francis Dr., Santa Fe, NM

87505

State of New Mexico
Energy, Minerals and Natural Resources

OIL CONSERVATION DIVISION
1220 South St. Francis Dr.
Santa Fe, NM 87505

Form C-103

Revised July 18, 2013

SUNDRY NOTICES AND REPORTS ON WELLS (DO NOT USE THIS FORM FOR PROPOSALS TO DRILL OR TO DEEPEN OR PLUG BACK TO A DIFFERENT RESERVOIR. USE "APPLICATION FOR PERMIT" (FORM C-101) FOR SUCH PROPOSALS.)		WELL API NO. 30-015-00948
1. Type of Well: Oil Well <input checked="" type="checkbox"/> Gas Well <input type="checkbox"/> Injection Well <input type="checkbox"/>		5. Indicate Type of Lease STATE <input type="checkbox"/> X FEE <input type="checkbox"/>
2. Name of Operator State of New Mexico formerly Canyon E&P Company		6. State Oil & Gas Lease No. E-2123
3. Address of Operator 1625 N. French Drive, Hobbs, N 88240		7. Lease Name or Unit Agreement Name Artesia Metex Unit
4. Well Location Unit Letter <u>G</u> : <u>2310</u> feet from the <u>N</u> line and <u>2310</u> feet from the <u>E</u> line Section <u>25</u> Township <u>18S</u> Range <u>27E</u> NMPM Eddy County		8. Well Number. 039
11. Elevation (Show whether DR, RKB, RT, GR, etc.) GL: 3557'		9. OGRID Number 269864
		10. Pool name or Wildcat Artesia QU-GB-SA

12. Check Appropriate Box to Indicate Nature of Notice, Report or Other Data

NOTICE OF INTENTION TO:

PERFORM REMEDIAL WORK ☐ PLUG AND ABANDON ☐
 TEMPORARILY ABANDON ☐ CHANGE PLANS ☐
 PULL OR ALTER CASING ☐ MULTIPLE COMPL ☐
 DOWNHOLE COMMINGLE ☐
 CLOSED-LOOP SYSTEM ☐

OTHER: ☐

SUBSEQUENT REPORT OF:

REMEDIAL WORK ☐ ALTERING CASING ☐
 COMMENCE DRILLING OPNS. ☐ P AND A ☒
 CASING/CEMENT JOB ☐

OTHER: ☐

13. Describe proposed or completed operations. (Clearly state all pertinent details, and give pertinent dates, including estimated date of starting any proposed work). SEE RULE 19.15.7.14 NMAC. For Multiple Completions: Attach wellbore diagram of proposed completion or recompletion.

5/23/23: MOL. Spot rig and equipment onto location. Dig out BH. 5-1/2" Csg broke @ surface. RU Rig. TOOHH w/ rods, pulled 52 rods before parting around 1300'. Try to remove wellhead cap to flange up, csg broke on surface along with tbq, tbq fell down hole. Dig and start to remove next connection on wellhead, connection came loose, pulled to remove connected and pulled along casing. Called for tools to fish 2-7/8" tubing and spear for 5-1/2" casing. Clean and remove mesquite from location and rig up rest of equipment. Secure well and SDFD.

5/25/23: Held JSA. Check well pressures, no pressure, open well to pit. Spot tubing float and fishing trailer. Standby for plate and slips for 5-1/2" csg. Pull up set slips. Call for and wait on slip collar and connection to go from 5-1/2" to 7-5/8" companion flange. Secure and clean location. SDFD.

5/26/23: Held JSA. Check well pressures, no pressure, open well to pit. Standby on tools. SDFD.

5/29/23: Held JSA. Check well pressures, no pressure, open well to pit. Cut 5-1/2" casing and remove old wellhead (BH). RU on tubing and start pulling, tubing stuck, worked free. TOOHH w/ 2-7/8" fish production tubing. LD 57 jnts ~1800' of pipe, not all came out, tubing was pitted and jnt was cut in half. RU A+ WL and RIH w/ 3.625 GRJB, tag @ 1270'. RD WL. Secure well and SDFD. Csg parted @ ~1290', rods parted @ ~1250-1300'.

5/30/23: Held JSA. Check well pressures, no pressure, open well to pit. TIH w/ OS to try to fish rods, ran in hole to 1900'. TOOHH, no rods. Change OS for 4.5" YellowJacket impression tool, TIH to 1900'. TOOHH w/ impression tool, markings on the sides indicates shifted or parted casing. TOOHH and stand back. RU A+ WL. RIH w/ JB 3.25" OD, was able to go down to 1800'. LD JB and RD WL. TIH to 1750', RU pump to pump Plug #1

Plug 1: 25 sxs of Type III cmt @ 14.8# 1.3 yield from 1750' to 1500'. TOOHH LD 16 jnts, stand back rest. WOC overnight. Secure well and SDFD.

6/1/23: Held JSA. Check well pressures, no pressure, open well to pit. TIH and tag plug #1 @ 1229'. TOOHH and LD tubing. RU A+ WL, RIH and run CBL from 1229' to surface. TOOHH and LD logging tools. RIH and perf @ 700', TOOHH WL. TIH w/ 5-1/2" packer, unable to set packer due to scale on casing. Establish circulation and injection rate, pressure up to 500#, bled down slowly to 350#.

Plug 2: 80 sxs Type III cmt @ 14.8# 1.3 yield, 33 sxs out and 47 sxs in. TOOHH and LD packer and tubing. Secure location and SDFD.

6/2/23: Held JSA. Check well pressures, no pressure, open well to pit. TIH and tag plug #2 @ 265', TOOL and LD tubing. RU A+ WL, perf @ 150', RD WL. RU Pump and established injection rate.

Plug 3: 110 sxs Type III cmt @ 14.8# 1.3 yield, lost circulation during plug, no circulation to surface. Displace plug to 75' and WOC for 3.5 hrs. TIH and tag plug 3 @ 100'. RU WL, RIH and perf @ 50'. RU pump and establish circulation to surface.

Plug 3A: 70 sxs Type III cmt @ 14.8# 1.3 yield, good cmt circulation to surface. ND BOP. RD Rig and pumping equipment. MOL and SDFN.

6/28/23: Travel to location. Dig out wellhead with backhoe. Cut off wellhead, TOC @ surface. Weld on Plug and Abandonment Marker. Backfill wellhead cellar. MOL.

I hereby certify that the information above is true and complete to the best of my knowledge and belief.

SIGNATURE *Neil Lindemeyer* TITLE Engineer Tech DATE 7/6/23

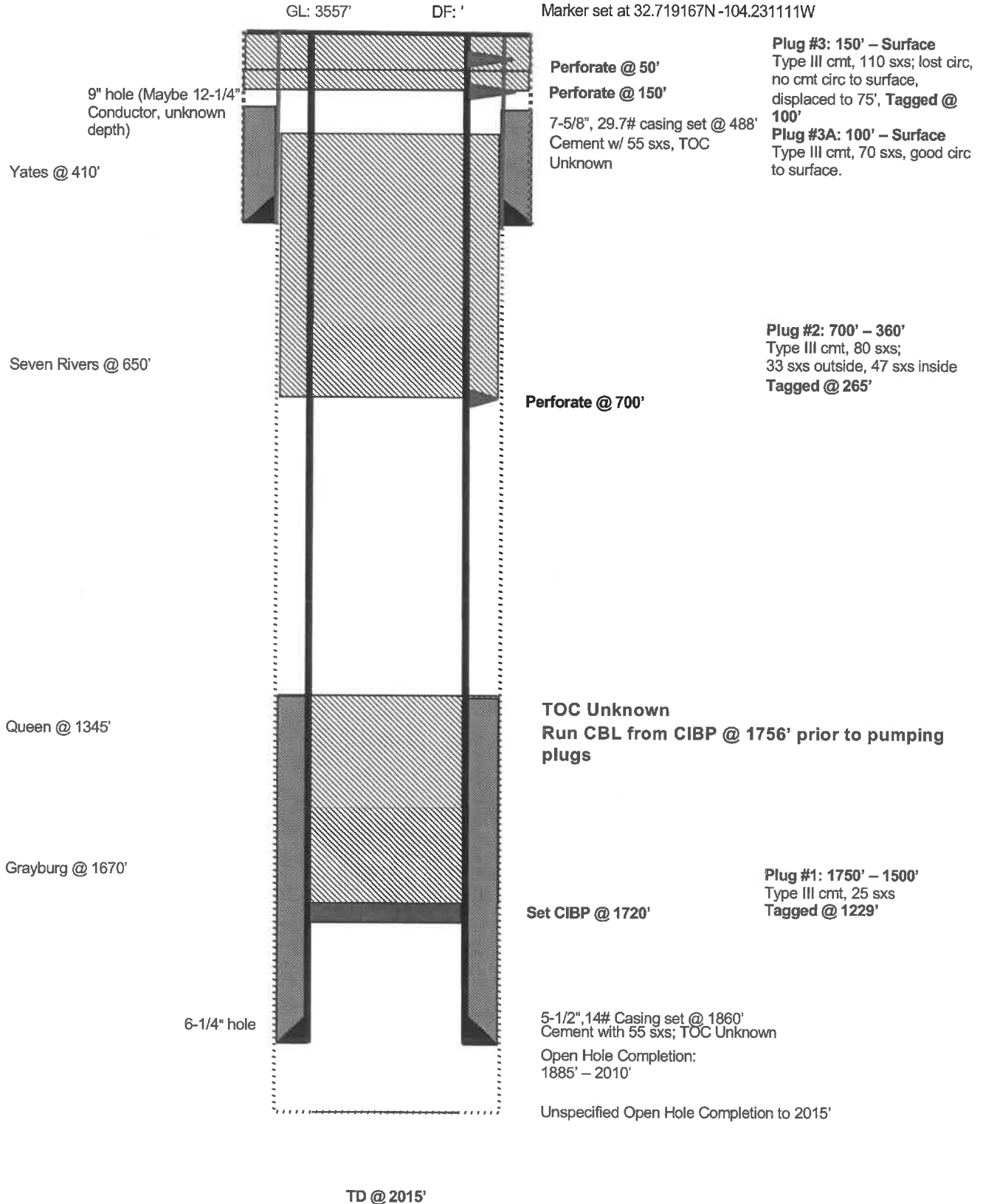
Type or print name Neil Lindemeyer E-mail address: neil@apluswell.com PHONE: 505-486-6958

For State Use Only

APPROVED BY: John Harrison TITLE Petroleum Specialist DATE 7/20/23

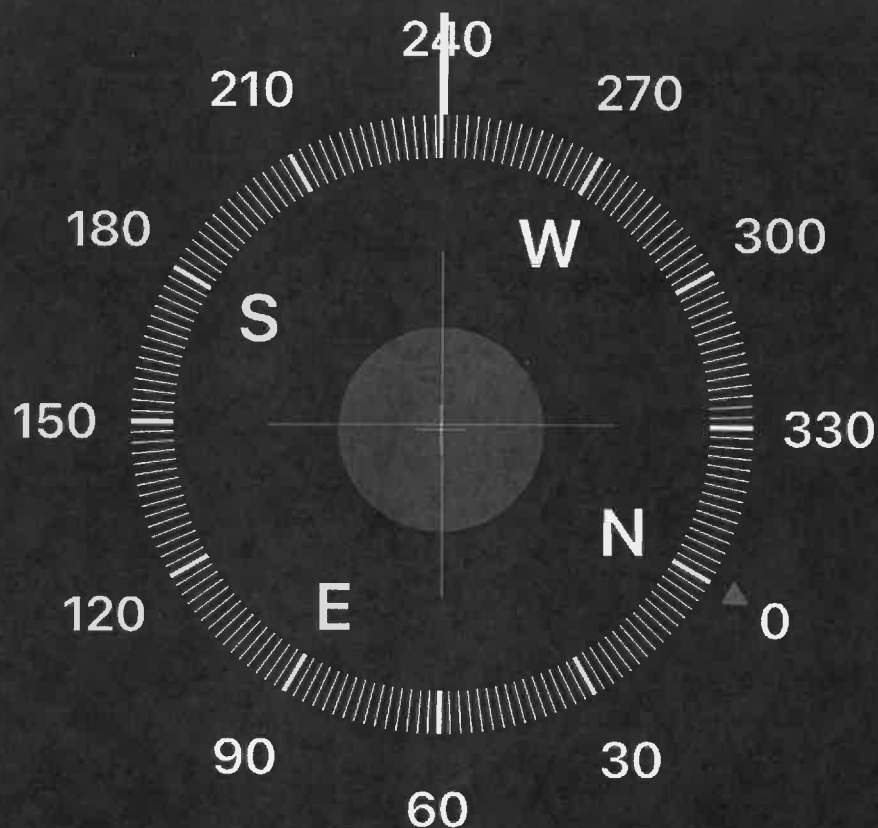
Conditions of Approval (if any):

Artesia Metex Unit 039
As Plugged on 6/28/2023
Artesia Queen-Grayburg-San Andres
Unit G, 2310' FNL & 2310' FEL, Section 25, T18S, R27E
Eddy County, NM, API #30-015-00948



10:10

5G



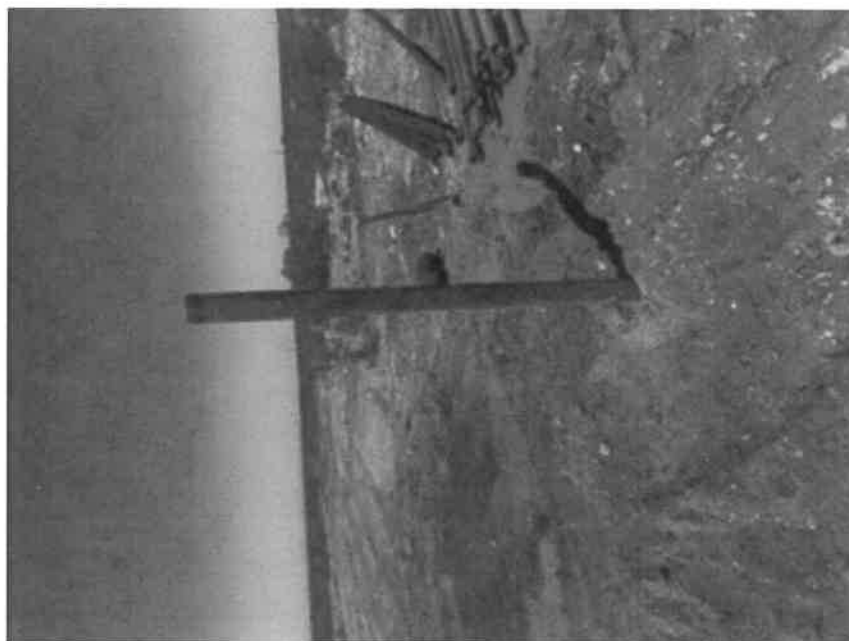
239° SW

32°43'9" N 104°13'52" W

Artesia, NM

3560 ft Elevation

ARTESIA METEX UNIT #39
API: 30-015-00948





District I
1625 N. French Dr., Hobbs, NM 88240
Phone:(575) 393-6161 Fax:(575) 393-0720
District II
811 S. First St., Artesia, NM 88210
Phone:(575) 748-1283 Fax:(575) 748-9720
District III
1000 Rio Brazos Rd., Aztec, NM 87410
Phone:(505) 334-6178 Fax:(505) 334-6170
District IV
1220 S. St Francis Dr., Santa Fe, NM 87505
Phone:(505) 476-3470 Fax:(505) 476-3462

State of New Mexico
Energy, Minerals and Natural Resources
Oil Conservation Division
1220 S. St Francis Dr.
Santa Fe, NM 87505

CONDITIONS

Action 237336

CONDITIONS

Operator: A-PLUS WELL SERVICE, INC. P.O. Box 1979 Farmington, NM 87499	OGRID: 370317
	Action Number: 237336
	Action Type: [C-103] Sub. Plugging (C-103P)

CONDITIONS

Created By	Condition	Condition Date
john.harrison	None	7/20/2023