

Office

District I - (575) 393-6161

1625 N. French Dr., Hobbs, NM 88240

District II - (575) 748-1283

811 S. First St., Artesia, NM 88210

District III - (505) 334-6178

1000 Rio Brazos Rd., Aztec, NM 87410

District IV - (505) 476-3460

1220 S. St. Francis Dr., Santa Fe, NM

87505

State of New Mexico
Energy, Minerals and Natural Resources

Form C-103

Revised July 18, 2013

OIL CONSERVATION DIVISION
1220 South St. Francis Dr.
Santa Fe, NM 87505

WELL API NO.

30-025-36485

5. Indicate Type of Lease

STATE ☐ X FEE ☐

6. State Oil & Gas Lease No.

7. Lease Name or Unit Agreement Name

New Mexico 36 State

8. Well Number. #1

9. OGRID Number

37636

10. Pool name or Wildcat

Skaggs Drinkard

SUNDRY NOTICES AND REPORTS ON WELLS

(DO NOT USE THIS FORM FOR PROPOSALS TO DRILL OR TO DEEPEN OR PLUG BACK TO A DIFFERENT RESERVOIR. USE "APPLICATION FOR PERMIT" (FORM C-101) FOR SUCH PROPOSALS.)

1. Type of Well: Oil Well ☐ X Gas Well ☐ Other Injection

2. Name of Operator

State of New Mexico formerly Pride Energy Corporation

3. Address of Operator

1625 N. French Drive, Hobbs, N 88240

4. Well Location

Unit Letter J : 2310 feet from the S line and 2310 feet from the E line
Section 36 Township 19S Range 37E NMPM Lea County

11. Elevation (Show whether DR, RKB, RT, GR, etc.)

12. Check Appropriate Box to Indicate Nature of Notice, Report or Other Data

NOTICE OF INTENTION TO:

PERFORM REMEDIAL WORK ☐TEMPORARILY ABANDON ☐PULL OR ALTER CASING ☐DOWNHOLE COMMINGLE ☐CLOSED-LOOP SYSTEM ☐OTHER: ☐PLUG AND ABANDON ☐CHANGE PLANS ☐MULTIPLE COMPL ☐

SUBSEQUENT REPORT OF:

REMEDIAL WORK ☐COMMENCE DRILLING OPNS. ☐CASING/CEMENT JOB ☐ALTERING CASING ☐P AND A ☒OTHER: ☐

13. Describe proposed or completed operations. (Clearly state all pertinent details, and give pertinent dates, including estimated date of starting any proposed work). SEE RULE 19.15.7.14 NMAC. For Multiple Completions: Attach wellbore diagram of proposed completion or recompletion.

2/2/23: Travel to location with equipment. Dig out wellhead with Backhoe. Cut off and remove wellhead, cement found at cut off. Weld on Plug and Abandonment Marker at 32.61579N -105.20403W. Backfill around marker, load backhoe and MOL.

I hereby certify that the information above is true and complete to the best of my knowledge and belief.

SIGNATURE

TITLE

DATE

Type or print name

E-mail address:

PHONE:

For State Use Only

APPROVED BY:

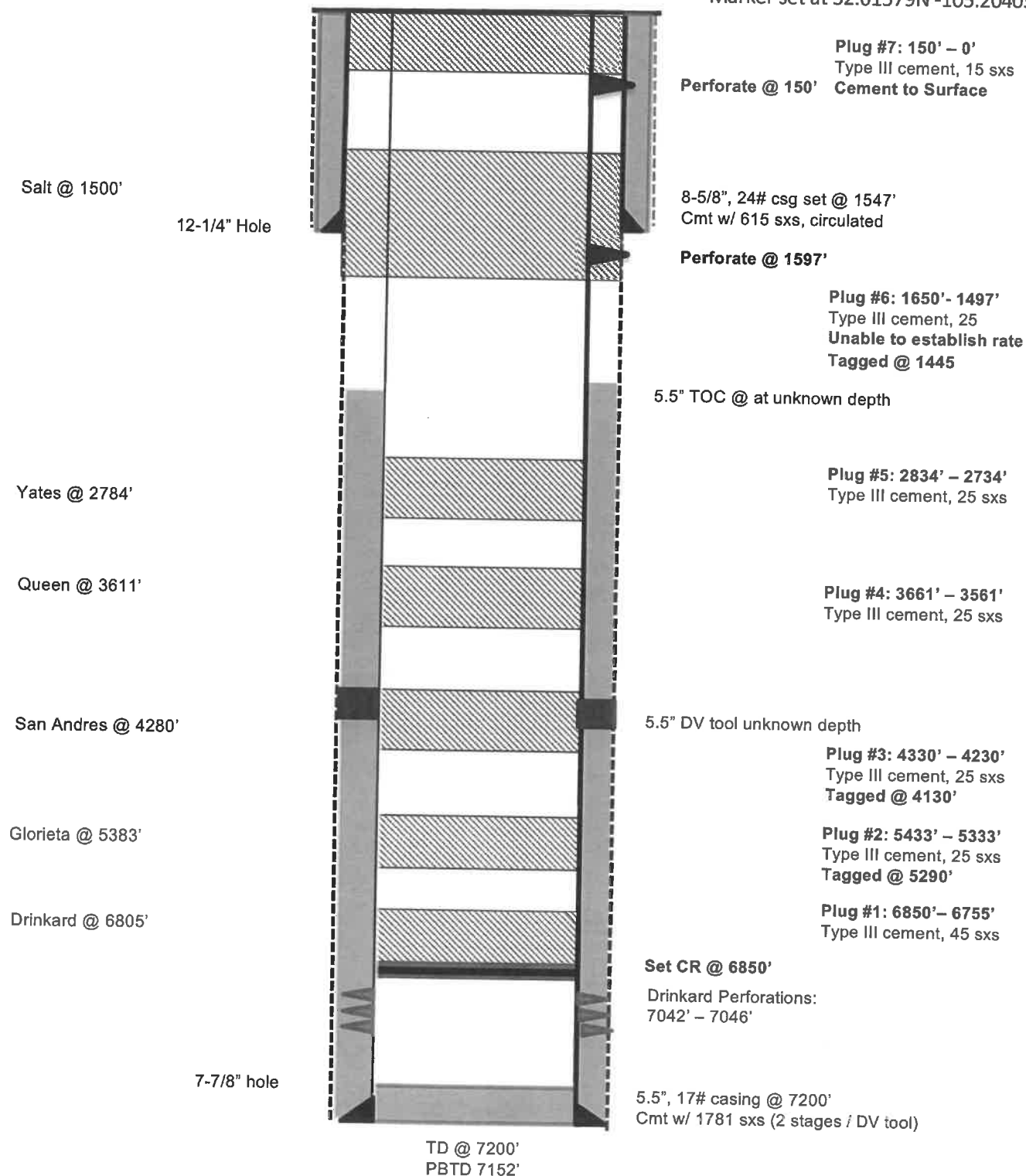
TITLE

DATE

Conditions of Approval (if any):

New Mexico 36 State #1
As Plugged on 2/2/2023
 Skaggs Drinkard
 J, 2310' FSL & 2310' FEL, Section 36, T19S, R37E
 Lea County, NM, API# 30-025-36485

Marker set at 32.61579N -105.20403W



District I
1625 N. French Dr., Hobbs, NM 88240
Phone:(575) 393-6161 Fax:(575) 393-0720

District II
811 S. First St., Artesia, NM 88210
Phone:(575) 748-1283 Fax:(575) 748-9720

District III
1000 Rio Brazos Rd., Aztec, NM 87410
Phone:(505) 334-6178 Fax:(505) 334-6170

District IV
1220 S. St Francis Dr., Santa Fe, NM 87505
Phone:(505) 476-3470 Fax:(505) 476-3462

State of New Mexico
Energy, Minerals and Natural Resources
Oil Conservation Division
1220 S. St Francis Dr.
Santa Fe, NM 87505

CONDITIONS

Action 242519

CONDITIONS

Operator: A-PLUS WELL SERVICE, INC. P.O. Box 1979 Farmington, NM 87499	OGRID: 370317
	Action Number: 242519
	Action Type: [C-103] Sub. Plugging (C-103P)

CONDITIONS

Created By	Condition	Condition Date
john.harrison	None	7/20/2023