

Submit a Copy To Appropriate District  
Office  
District I – (575) 393-6161  
1625 N. French Dr., Hobbs, NM 88240  
District II – (575) 748-1283  
811 S. First St., Artesia, NM 88210  
District III – (505) 334-6178  
1000 Rio Brazos Rd., Aztec, NM 87410  
District IV – (505) 476-3460  
1220 S. St. Francis Dr., Santa Fe, NM  
87505

State of New Mexico  
Energy, Minerals and Natural Resources

Form C-103  
Revised July 18, 2013

OIL CONSERVATION DIVISION  
1220 South St. Francis Dr.  
Santa Fe, NM 87505

WELL API NO. 30-025-50492
5. Indicate Type of Lease STATE <input type="checkbox"/> FEE <input type="checkbox"/> FED <input checked="" type="checkbox"/>
6. State Oil & Gas Lease No.
7. Lease Name or Unit Agreement Name Ibex 15/10 Fed Com
8. Well Number 523H
9. OGRID Number 14744
10. Pool name or Wildcat Antelope Ridge; Bone Spring, Northwest 2207 Antelope Ridge; Bone Spring, West 2209
11. Elevation (Show whether DR, RKB, RT, GR, etc.) 3459' GL

SUNDRY NOTICES AND REPORTS ON WELLS  
(DO NOT USE THIS FORM FOR PROPOSALS TO DRILL OR TO DEEPEN OR PLUG BACK TO A DIFFERENT RESERVOIR. USE "APPLICATION FOR PERMIT" (FORM C-101) FOR SUCH PROPOSALS.)

1. Type of Well: Oil Well ☒ Gas Well ☐ Other ☐

2. Name of Operator  
Mewbourne Oil Company

3. Address of Operator  
PO Box 5270 Hobbs, NM 88240

4. Well Location  
Unit Letter N \_\_\_\_\_ : 280 \_\_\_\_\_ feet from the South \_\_\_\_\_ line and 1580 \_\_\_\_\_ feet from the West \_\_\_\_\_ line  
Section 15 Township 23S Range 34E NMPM Lea County

12. Check Appropriate Box to Indicate Nature of Notice, Report or Other Data

NOTICE OF INTENTION TO:

PERFORM REMEDIAL WORK ☐ PLUG AND ABANDON ☐  
TEMPORARILY ABANDON ☐ CHANGE PLANS ☒  
PULL OR ALTER CASING ☐ MULTIPLE COMPL ☐  
DOWNHOLE COMMINGLE ☐  
CLOSED-LOOP SYSTEM ☐  
OTHER: ☐

SUBSEQUENT REPORT OF:

REMEDIAL WORK ☐ ALTERING CASING ☐  
COMMENCE DRILLING OPNS. ☐ P AND A ☐  
CASING/CEMENT JOB ☐  
OTHER: ☐

13. Describe proposed or completed operations. (Clearly state all pertinent details, and give pertinent dates, including estimated date of starting any proposed work). SEE RULE 19.15.7.14 NMAC. For Multiple Completions: Attach wellbore diagram of proposed completion or recompletion.

Mewbourne Oil Company would like to change the dedicated acreage from 320 to 640.

C-102 attached for each Pool.

**Administrative Order R-22737**

If you have any questions, please contact Bradley Bishop.

I hereby certify that the information above is true and complete to the best of my knowledge and belief.

SIGNATURE Jackie Lathan TITLE Regulatory DATE 07/03/2023

Type or print name Jackie Lathan E-mail address: jlathan@mewbourne.com PHONE: 575-393-5905

**For State Use Only**

APPROVED BY: \_\_\_\_\_ TITLE \_\_\_\_\_ DATE \_\_\_\_\_  
Conditions of Approval (if any): \_\_\_\_\_

District I  
1625 N. French Dr., Hobbs, NM 88240  
Phone: (575) 393-6161 Fax: (575) 393-0720  
District II  
811 S. First St., Artesia, NM 88210  
Phone: (575) 748-1283 Fax: (575) 748-9720  
District III  
1000 Rio Brazos Road, Aztec, NM 87410  
Phone: (505) 334-6178 Fax: (505) 334-6170  
District IV  
1220 S. St. Francis Dr., Santa Fe, NM 87505  
Phone: (505) 476-3460 Fax: (505) 476-3462

State of New Mexico  
Energy, Minerals & Natural Resources Department  
OIL CONSERVATION DIVISION  
1220 South St. Francis Dr.  
Santa Fe, NM 87505

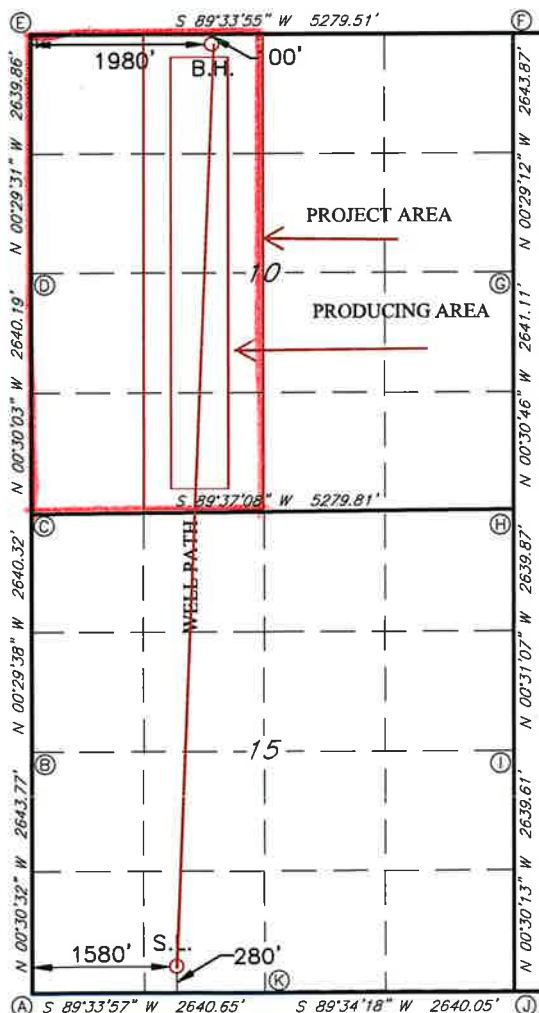
Form C-102  
Revised August 1, 2011  
Submit one copy to appropriate  
District Office

☒ AMENDED REPORT

WELL LOCATION AND ACREAGE DEDICATION PLAT

<sup>1</sup> API Number <b>30-025-50492</b>		<sup>2</sup> Pool Code <b>2207</b>		<sup>3</sup> Pool Name <b>ANTELOPE RIDGE; BONE SPRING, NORTHWEST</b>					
<sup>4</sup> Property Code <b>333189</b>		<sup>5</sup> Property Name <b>IBEX 15/10 FED COM</b>						<sup>6</sup> Well Number <b>523 H</b>	
<sup>7</sup> GRID NO. <b>14744</b>		<sup>8</sup> Operator Name <b>MEWBOURNE OIL COMPANY</b>						<sup>9</sup> Elevation <b>3459'</b>	
<sup>10</sup> Surface Location									
UL or lot no. <b>N</b>	Section <b>15</b>	Township <b>23S</b>	Range <b>34E</b>	Lot Idn	Feet from the <b>280</b>	North/South line <b>SOUTH</b>	Feet from the <b>1580</b>	East/West line <b>WEST</b>	County <b>LEA</b>
<sup>11</sup> Bottom Hole Location If Different From Surface									
UL or lot no. <b>C</b>	Section <b>10</b>	Township <b>23S</b>	Range <b>34E</b>	Lot Idn	Feet from the <b>100</b>	North/South line <b>NORTH</b>	Feet from the <b>1980</b>	East/West line <b>WEST</b>	County <b>LEA</b>
<sup>12</sup> Dedicated Acres <b>32.0</b>		<sup>13</sup> Joint or Infill		<sup>14</sup> Consolidation Code		<sup>15</sup> Order No. <b>R-22737</b>			

No allowable will be assigned to this completion until all interest have been consolidated or a non-standard unit has been approved by the division.



GEODETIC DATA  
NAD 83 GRID - NM EAST  
SURFACE LOCATION  
N: 473289.7 - E: 810760.8  
LAT: 32.2981353° N  
LONG: 103.4613736° W

BOTTOM HOLE  
N: 483474.8 - E: 811072.1  
LAT: 32.3261226° N  
LONG: 103.4600977° W

CORNER DATA  
NAD 83 GRID - NM EAST  
A: FOUND BRASS CAP "1913"  
N: 472997.8 - E: 809183.6

B: FOUND BRASS CAP "1913"  
N: 475641.0 - E: 809160.1

C: FOUND BRASS CAP "1913"  
N: 478280.8 - E: 809137.4

D: FOUND BRASS CAP "1913"  
N: 480920.4 - E: 809114.3

E: FOUND PK NAIL  
N: 483559.7 - E: 809091.7

F: FOUND PK NAIL  
N: 483599.8 - E: 814370.1

G: FOUND BRASS CAP "1913"  
N: 480956.4 - E: 814392.6

H: FOUND BRASS CAP "1913"  
N: 478315.9 - E: 814416.2

I: FOUND BRASS CAP "1913"  
N: 475676.6 - E: 814440.1

J: FOUND BRASS CAP "1913"  
N: 473037.5 - E: 814463.3

K: FOUND BRASS CAP "1913"  
N: 473017.8 - E: 811823.8

<sup>17</sup> OPERATOR CERTIFICATION

I hereby certify that the information contained herein is true and complete to the best of my knowledge and belief, and that this organization either owns a working interest or unleased mineral interest in the land including the proposed bottom hole location or has a right to drill this well at this location pursuant to a contract with an owner of such a mineral or working interest, or to a voluntary pooling agreement or a compulsory pooling order heretofore entered by the division.

Signature *Bradley Bishop* Date **3/23/2023**

Printed Name **BRADLEY BISHOP**

E-mail Address **BBISHOP@MEWBOURNE.COM**

<sup>18</sup> SURVEYOR CERTIFICATION

I hereby certify that the well location shown on this plat was plotted from field notes of actual surveys made by me or under my supervision, and that the same is true and correct to the best of my belief.

**01-28-2021**

Date of Survey

Signature and Seal of Professional Surveyor

**19680**

Certificate Number



Job No: LS21010077

District I  
1625 N. French Dr., Hobbs, NM 88240  
Phone: (575) 393-6161 Fax: (575) 393-0720  
District II  
811 S. First St., Artesia, NM 88210  
Phone: (575) 748-1283 Fax: (575) 748-9720  
District III  
1000 Rio Brazos Road, Aztec, NM 87410  
Phone: (505) 334-6178 Fax: (505) 334-6170  
District IV  
1220 S. St. Francis Dr., Santa Fe, NM 87505  
Phone: (505) 476-3460 Fax: (505) 476-3462

State of New Mexico  
Energy, Minerals & Natural Resources Department  
**OIL CONSERVATION DIVISION**  
1220 South St. Francis Dr.  
Santa Fe, NM 87505

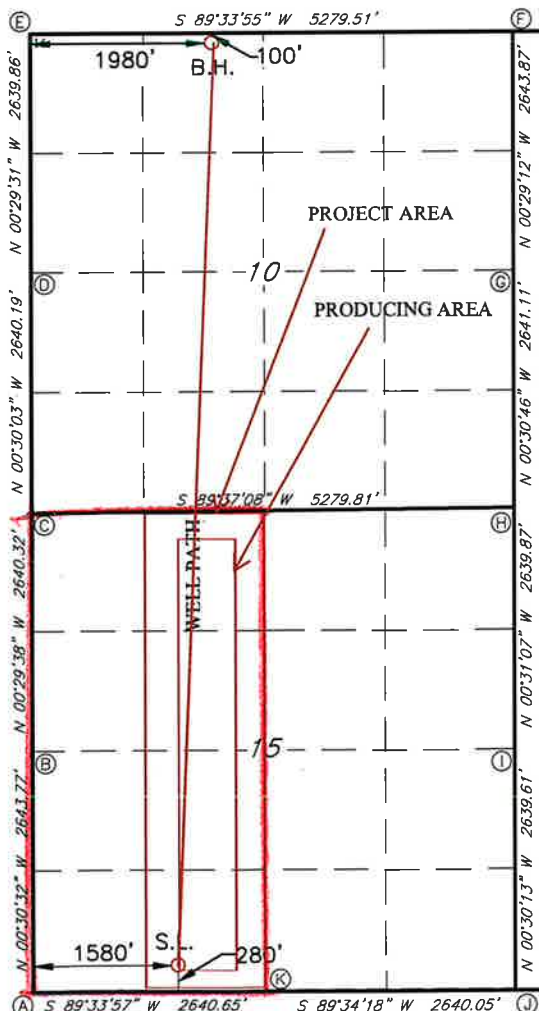
Form C-102  
Revised August 1, 2011  
Submit one copy to appropriate  
District Office

☒ AMENDED REPORT

**WELL LOCATION AND ACREAGE DEDICATION PLAT**

<sup>1</sup> API Number <b>30-025-50492</b>		<sup>2</sup> Pool Code <b>2209</b>		<sup>3</sup> Pool Name <b>ANTELOPE RIDGE; BONE SPRING, WEST</b>					
<sup>4</sup> Property Code <b>333189</b>		<sup>5</sup> Property Name <b>IBEX 15/10 FED COM</b>						<sup>6</sup> Well Number <b>523H</b>	
<sup>7</sup> OGRID NO. <b>14744</b>		<sup>8</sup> Operator Name <b>MEWBOURNE OIL COMPANY</b>						<sup>9</sup> Elevation <b>3459'</b>	
<sup>10</sup> Surface Location									
UL or lot no. <b>N</b>	Section <b>15</b>	Township <b>23S</b>	Range <b>34E</b>	Lot Idn	Feet from the <b>280</b>	North/South line <b>SOUTH</b>	Feet From the <b>1580</b>	East/West line <b>WEST</b>	County <b>LEA</b>
<sup>11</sup> Bottom Hole Location If Different From Surface									
UL or lot no. <b>C</b>	Section <b>10</b>	Township <b>23S</b>	Range <b>34E</b>	Lot Idn	Feet from the <b>100</b>	North/South line <b>NORTH</b>	Feet from the <b>1980</b>	East/West line <b>WEST</b>	County <b>LEA</b>
<sup>12</sup> Dedicated Acres <b>320</b>		<sup>13</sup> Joint or Infill		<sup>14</sup> Consolidation Code		<sup>15</sup> Order No. <b>R-22737</b>			

No allowable will be assigned to this completion until all interest have been consolidated or a non-standard unit has been approved by the division.



**GEODETIC DATA**  
NAD 83 GRID - NM EAST  
**SURFACE LOCATION**  
N: 473289.7 - E: 810760.8  
LAT: 32.2981353° N  
LONG: 103.4613736° W

**BOTTOM HOLE**  
N: 483474.8 - E: 811072.1  
LAT: 32.3261226° N  
LONG: 103.4600977° W

**CORNER DATA**  
NAD 83 GRID - NM EAST  
A: FOUND BRASS CAP "1913"  
N: 472997.8 - E: 809183.6  
B: FOUND BRASS CAP "1913"  
N: 475641.0 - E: 809160.1  
C: FOUND BRASS CAP "1913"  
N: 478280.8 - E: 809137.4  
D: FOUND BRASS CAP "1913"  
N: 480920.4 - E: 809114.3  
E: FOUND PK NAIL  
N: 483559.7 - E: 809091.7  
F: FOUND PK NAIL  
N: 483599.8 - E: 814370.1  
G: FOUND BRASS CAP "1913"  
N: 480956.4 - E: 814392.6  
H: FOUND BRASS CAP "1913"  
N: 478315.9 - E: 814416.2  
I: FOUND BRASS CAP "1913"  
N: 475676.6 - E: 814440.1  
J: FOUND BRASS CAP "1913"  
N: 473037.5 - E: 814463.3  
K: FOUND BRASS CAP "1913"  
N: 473017.8 - E: 811823.8

**<sup>17</sup> OPERATOR CERTIFICATION**

I hereby certify that the information contained herein is true and complete to the best of my knowledge and belief, and that this organization either owns a working interest or unleased mineral interest in the land including the proposed bottom hole location or has a right to drill this well at this location pursuant to a contract with an owner of such a mineral or working interest, or to a voluntary pooling agreement or a compulsory pooling order heretofore entered by the division.

Signature *Bradley Bishop* Date **3/23/2023**  
Printed Name **BRADLEY BISHOP**  
E-mail Address **BBISHOP@MEWBOURNE.COM**

**<sup>18</sup> SURVEYOR CERTIFICATION**

I hereby certify that the well location shown on this plat was plotted from field notes of actual surveys made by me or under my supervision, and that the same is true and correct to the best of my belief.

**01-28-2021**

Date of Survey

Signature and Seal of Professional Surveyor

**19680**

Certificate Number



Job No: LS21010077

**District I**  
1625 N. French Dr., Hobbs, NM 88240  
Phone:(575) 393-6161 Fax:(575) 393-0720  
**District II**  
811 S. First St., Artesia, NM 88210  
Phone:(575) 748-1283 Fax:(575) 748-9720  
**District III**  
1000 Rio Brazos Rd., Aztec, NM 87410  
Phone:(505) 334-6178 Fax:(505) 334-6170  
**District IV**  
1220 S. St Francis Dr., Santa Fe, NM 87505  
Phone:(505) 476-3470 Fax:(505) 476-3462

State of New Mexico  
Energy, Minerals and Natural Resources  
Oil Conservation Division  
1220 S. St Francis Dr.  
Santa Fe, NM 87505

CONDITIONS

Action 235493

CONDITIONS

Operator: MEWBOURNE OIL CO P.O. Box 5270 Hobbs, NM 88241	OGRID: 14744
	Action Number: 235493
	Action Type: [C-103] NOI Change of Plans (C-103A)

CONDITIONS

Created By	Condition	Condition Date
pkautz	None	7/21/2023