

Submit 1 Copy To Appropriate District Office
 District I – (575) 393-6161
 1625 N. French Dr., Hobbs, NM 88240
 District II – (575) 748-1283
 811 S. First St., Artesia, NM 88210
 District III – (505) 334-6178
 1000 Rio Brazos Rd., Aztec, NM 87410
 District IV – (505) 476-3460
 1220 S. St. Francis Dr., Santa Fe, NM 87505

State of New Mexico
 Energy, Minerals and Natural Resources

Form C-103
 Revised July 18, 2013

OIL CONSERVATION DIVISION
 1220 South St. Francis Dr.
 Santa Fe, NM 87505

SUNDRY NOTICES AND REPORTS ON WELLS (DO NOT USE THIS FORM FOR PROPOSALS TO DRILL OR TO DEEPEN OR PLUG BACK TO A DIFFERENT RESERVOIR. USE "APPLICATION FOR PERMIT" (FORM C-101) FOR SUCH PROPOSALS.) 1. Type of Well: Oil Well <input checked="" type="checkbox"/> Gas Well <input type="checkbox"/> Other <input type="checkbox"/>		WELL API NO. 30-025-43033
2. Name of Operator Kaiser-Francis Oil Company		5. Indicate Type of Lease STATE <input type="checkbox"/> FEE <input type="checkbox"/> FED <input type="checkbox"/>
3. Address of Operator P.O. Box 21468, Tulsa, OK 74121		6. State Oil & Gas Lease No.
4. Well Location Unit Letter <u>I</u> : <u>2057</u> feet from the <u>South</u> line and <u>875</u> feet from the <u>East</u> line Section <u>6</u> Township <u>23S</u> Range <u>34E</u> NMPM County <u>Lea</u>		7. Lease Name or Unit Agreement Name Bell Lake Unit North
11. Elevation (Show whether DR, RKB, RT, GR, etc.) 3,458' GR		8. Well Number 230H
9. OGRID Number 12361		10. Pool name or Wildcat Ojo Chiso; Bone Spring, Southwest

12. Check Appropriate Box to Indicate Nature of Notice, Report or Other Data

NOTICE OF INTENTION TO:

PERFORM REMEDIAL WORK ☐ PLUG AND ABANDON ☐
 TEMPORARILY ABANDON ☐ CHANGE PLANS ☐
 PULL OR ALTER CASING ☐ MULTIPLE COMPL ☐
 DOWNHOLE COMMINGLE ☐
 CLOSED-LOOP SYSTEM ☐
 OTHER: UPDATE DEDICATED ACREAGE ☒ OTHER: ☐

SUBSEQUENT REPORT OF:

REMEDIAL WORK ☐ ALTERING CASING ☐
 COMMENCE DRILLING OPNS. ☐ P AND A ☐
 CASING/CEMENT JOB ☐
 OTHER: ☐

13. Describe proposed or completed operations. (Clearly state all pertinent details, and give pertinent dates, including estimated date of starting any proposed work). SEE RULE 19.15.7.14 NMAC. For Multiple Completions: Attach wellbore diagram of proposed completion or recompletion.

Kaiser-Francis Oil Company requests to update the dedicated acreage for the Bell Lake Unit North 230H to 480.03 acres. An amended C-102 is attached.

Spud Date: 11/20/2017

Rig Release Date: 1/5/2018

I hereby certify that the information above is true and complete to the best of my knowledge and belief.

SIGNATURE *Christina Opfer*
 Type or print name Christina Opfer

TITLE Regulatory Manager
 E-mail address ChristinaO@kfoc.net

DATE 6/14/2023
 PHONE 918-491-4468

For State Use Only

APPROVED BY: _____ TITLE _____ DATE _____

Conditions of Approval (if any):

DISTRICT I
1625 N. French Dr., Hobbs, NM 88240
Phone: (575) 393-6161 Fax: (575) 393-0720

DISTRICT II
811 S. First St., Artesia, NM 88210
Phone: (575) 748-1283 Fax: (575) 748-9720

DISTRICT III
1000 Rio Brazos Road, Aztec, NM 87410
Phone: (505) 334-6178 Fax: (505) 334-6170

DISTRICT IV
1220 S. St. Francis Dr., Santa Fe, NM 87505
Phone: (505) 476-3460 Fax: (505) 476-3462

State of New Mexico
Energy, Minerals & Natural Resources Department
OIL CONSERVATION DIVISION
1220 South St. Francis Dr.
Santa Fe, New Mexico 87505

Form C-102

Revised August 1, 2011

Submit one copy to appropriate
District Office

X AMENDED REPORT

WELL LOCATION AND ACREAGE DEDICATION PLAT

API Number 30-025-43033	Pool Code 98259	Pool Name Ojo Chiso; Bone Spring, Southwest
Property Code 316707	Property Name BELL LAKE UNIT NORTH	Well Number 230H
OGRID No.	Operator Name KAISER-FRANCIS OIL COMPANY	Elevation 3458'

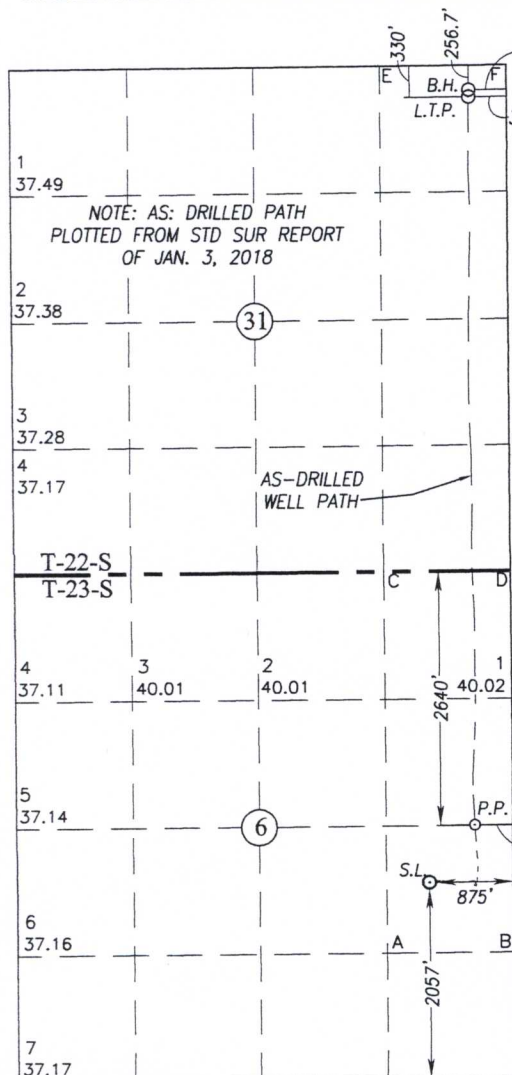
Surface Location

UL or lot No.	Section	Township	Range	Lot Idn	Feet from the	North/South line	Feet from the	East/West line	County
I	6	23-S	34-E		2057	SOUTH	875	EAST	LEA

AS-Drilled Bottom Hole Location If Different From Surface

UL or lot No.	Section	Township	Range	Lot Idn	Feet from the	North/South line	Feet from the	East/West line	County
A	31	22-S	34-E		256.7	NORTH	394.5	EAST	LEA
Dedicated Acres 480.03	Joint or Infill	Consolidation Code	Order No.						

NO ALLOWABLE WILL BE ASSIGNED TO THIS COMPLETION UNTIL ALL INTERESTS HAVE BEEN CONSOLIDATED OR A NON-STANDARD UNIT HAS BEEN APPROVED BY THE DIVISION



SCALE: 1"=2000'

BOTTOM HOLE LOCATION NAD 83 NME	BOTTOM HOLE LOCATION NAD 27 NME
Y = 493773.7 N	Y = 493713.5 N
X = 798059.4 E	X = 756876.4 E
LAT. = 32.354714° N	LAT. = 32.354590° N
LONG. = 103.501962° W	LONG. = 103.501481° W
L.T.P. LOCATION NAD 83 NME	L.T.P. LOCATION NAD 27 NME
Y = 493700.3 N	Y = 493640.2 N
X = 798058.0 E	X = 756875.0 E
LAT. = 32.354513° N	LAT. = 32.354389° N
LONG. = 103.501968° W	LONG. = 103.501487° W

CORNER COORDINATES TABLE

NAD 27 NME	
A - Y = 484719.1 N, X = 756012.2 E	
B - Y = 484728.3 N, X = 757332.2 E	
C - Y = 488681.9 N, X = 755982.3 E	
D - Y = 488692.5 N, X = 757302.5 E	
E - Y = 493962.7 N, X = 755950.1 E	
F - Y = 493973.3 N, X = 757269.2 E	

CORNER COORDINATES TABLE

NAD 83 NME	
A - Y = 484779.0 N, X = 797195.4 E	
B - Y = 484788.2 N, X = 798515.4 E	
C - Y = 488741.9 N, X = 797165.5 E	
D - Y = 488752.5 N, X = 798485.7 E	
E - Y = 494022.9 N, X = 797133.1 E	
F - Y = 494033.4 N, X = 798452.2 E	

PENETRATION POINT NAD 83 NME
Y = 486109.8 N
X = 798110.5 E
LAT. = 32.333649° N
LONG. = 103.501989° W

PENETRATION POINT NAD 27 NME
Y = 486050.0 N
X = 756927.3 E
ELAT. = 32.333525° N
LONG. = 103.501509° W

GEODETIC COORDINATES SURFACE LOCATION NAD 83 NME
Y = 485519.8 N
X = 797634.9 E
LAT. = 32.332037° N
LONG. = 103.503544° W

GEODETIC COORDINATES SURFACE LOCATION NAD 27 NME
Y = 485459.9 N
X = 756451.7 E
LAT. = 32.331913° N
LONG. = 103.503063° W

OPERATOR CERTIFICATION

I hereby certify that the information herein is true and complete to the best of my knowledge and belief, and that this organization either owns a working interest or unleased mineral interest in the land including the proposed bottom hole location or has a right to drill this well at this location pursuant to a contract with an owner of such mineral or working interest, or to a voluntary pooling agreement or a compulsory pooling order heretofore entered by the division.

Christina Opfer 4/28/2023

Signature

Date

Christina Opfer

Printed Name

ChristinaO@kfoc.net

E-mail Address

SURVEYOR CERTIFICATION

I hereby certify that the well location shown on this plat was plotted from field notes of actual surveys made by me or under my supervision, and that the same is true and correct to the best of my belief.

MARCH 11, 2016

Date of Survey

Signature & Seal of Professional Surveyor:

Ronald J. Eidson
3239
Certificate Number Gary G. Eidson 12641
Ronald J. Eidson 3239

LSL REL. W.O.: 17131036 JWSC W.O.: 18.13.0066

District I
1625 N. French Dr., Hobbs, NM 88240
Phone:(575) 393-6161 Fax:(575) 393-0720
District II
811 S. First St., Artesia, NM 88210
Phone:(575) 748-1283 Fax:(575) 748-9720
District III
1000 Rio Brazos Rd., Aztec, NM 87410
Phone:(505) 334-6178 Fax:(505) 334-6170
District IV
1220 S. St Francis Dr., Santa Fe, NM 87505
Phone:(505) 476-3470 Fax:(505) 476-3462

State of New Mexico
Energy, Minerals and Natural Resources
Oil Conservation Division
1220 S. St Francis Dr.
Santa Fe, NM 87505

CONDITIONS

Action 227523

CONDITIONS

Operator: KAISER-FRANCIS OIL CO PO Box 21468 Tulsa, OK 74121146	OGRID: 12361
	Action Number: 227523
	Action Type: [C-103] NOI Change of Plans (C-103A)

CONDITIONS

Created By	Condition	Condition Date
pkautz	None	8/1/2023