

District I
1625 N. French Dr., Hobbs, NM 88240
Phone: (575) 393-6161 Fax: (575) 393-0720

District II
811 S. First St., Artesia, NM 88210
Phone: (575) 748-1283 Fax: (575) 748-9720

District III
1000 Rio Brazos Road, Aztec, NM 87410
Phone: (505) 334-6178 Fax: (505) 334-6170

District IV
1220 S. St. Francis Dr., Santa Fe, NM 87505
Phone: (505) 476-3460 Fax: (505) 476-3462

State of New Mexico

Form C-101
Revised July 18, 2013

Energy Minerals and Natural Resources

Oil Conservation Division

☐ AMENDED REPORT

1220 South St. Francis Dr.

Santa Fe, NM 87505

APPLICATION FOR PERMIT TO DRILL, RE-ENTER, DEEPEN, PLUGBACK, OR ADD A ZONE

¹ Operator Name and Address FAE II Operating LLC 11757 Katy Freeway, Suite 725 Houston, TX 77079		² OGRID Number 329326
		³ API Number 30-025-28278
⁴ Property Code 331161	⁵ Property Name STATE A A/C 2	⁶ Well No. #069

⁷ Surface Location

UL - Lot	Section	Township	Range	Lot Idn	Feet from	N/S Line	Feet From	E/W Line	County
I	08	22S	36E		2615	S	1295	E	LEA

⁸ Proposed Bottom Hole Location

UL - Lot	Section	Township	Range	Lot Idn	Feet from	N/S Line	Feet From	E/W Line	County
I	08	22S	36E		2615	S	1295	E	LEA

⁹ Pool Information

Pool Name EUNICE; 7 RVRs-QUEEN, SOUTH	Pool Code 24130
--	--------------------

Additional Well Information

¹¹ Work Type A	¹² Well Type I	¹³ Cable/Rotary R	¹⁴ Lease Type S	¹⁵ Ground Level Elevation 3550'
¹⁶ Multiple NO	¹⁷ Proposed Depth 3900'	¹⁸ Formation QUEEN	¹⁹ Contractor TBD	²⁰ Spud Date 01/16/2023
Depth to Ground water		Distance from nearest fresh water well		Distance to nearest surface water

☒ We will be using a closed-loop system in lieu of lined pits

R-22349

²¹ Proposed Casing and Cement Program

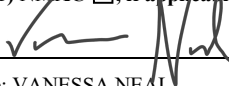
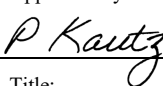
Type	Hole Size	Casing Size	Casing Weight/ft	Setting Depth	Sacks of Cement	Estimated TOC
Surface	12.250"	8.625"	24#	582'	375 sxs	Surface
Production	7.875"	5.500"	14#	3900'	800 sxs	Surface

Casing/Cement Program: Additional Comments

--

²² Proposed Blowout Prevention Program

Type	Working Pressure	Test Pressure	Manufacturer
Double Ram	3,000#	3,000#	Unknown

²³ I hereby certify that the information given above is true and complete to the best of my knowledge and belief. I further certify that I have complied with 19.15.14.9 (A) NMAC <input type="checkbox"/> and/or 19.15.14.9 (B) NMAC <input type="checkbox"/> , if applicable. Signature: 		OIL CONSERVATION DIVISION	
Printed name: VANESSA NEAL		Approved By: 	
Title: SR RESERVOIR ENGINEER		Title:	
E-mail Address: vanessa@faenergyus.com		Approved Date: 08/08/2023	Expiration Date: 08/08/2025
Date: 20 DEC 2022	Phone: 832-219-0990	Conditions of Approval Attached	

District I
1625 N. French Dr., Hobbs, NM 88240
Phone: (575) 393-6161 Fax: (575) 393-0720

District II
811 S. First St., Artesia, NM 88210
Phone: (575) 748-1283 Fax: (575) 748-9720

District III
1000 Rio Brazos Road, Aztec, NM 87410
Phone: (505) 334-6178 Fax: (505) 334-6170

District IV
1220 S. St. Francis Dr., Santa Fe, NM 87505
Phone: (505) 476-3460 Fax: (505) 476-3462

State of New Mexico
Energy, Minerals & Natural Resources Department
OIL CONSERVATION DIVISION
1220 South St. Francis Dr.
Santa Fe, NM 87505

Form C-102
Revised August 1, 2011
Submit one copy to appropriate
District Office
☐ AMENDED REPORT

WELL LOCATION AND ACREAGE DEDICATION PLAT

¹ API Number 30-025-28278	² Pool Code 24130	³ Pool Name EUNICE; 7 RVRs-QUEEN, SOUTH
⁴ Property Code 331161	⁵ Property Name STATE A A/C 2	
⁷ OGRID No. 329326	⁸ Operator Name FAE II OPERATING, LLC	⁶ Well Number #069
		⁹ Elevation 3550'

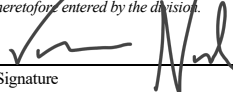
10 Surface Location

UL - Lot	Section	Township	Range	Lot Idn	Feet from	N/S Line	Feet From	E/W Line	County
I	08	22S	36E		2615	S	1295	E	LEA

¹¹ Bottom Hole Location If Different From Surface

UL - Lot	Section	Township	Range	Lot Idn	Feet from	N/S Line	Feet From	E/W Line	County
¹² Dedicated Acres 40	¹³ Joint or Infill Y	¹⁴ Consolidation Code		¹⁵ Order No. R-22349					

No allowable will be assigned to this completion until all interests have been consolidated or a non-standard unit has been approved by the division.

16				<p>17 OPERATOR CERTIFICATION</p> <p><i>I hereby certify that the information contained herein is true and complete to the best of my knowledge and belief, and that this organization either owns a working interest or unleased mineral interest in the land including the proposed bottom hole location or has a right to drill this well at this location pursuant to a contract with an owner of such a mineral or working interest or to a voluntary pooling agreement or a compulsory pooling order heretofore entered by the division.</i></p> <p> 12/20/2022</p> <p>Signature Date</p> <p><u>VANESSA NEAL</u> Printed Name</p> <p><u>vanessa@faenergyus.com</u> E-mail Address</p>
		NE/4 SE/4 Sec 08 (40 acres)	<p>1295'</p>	<p>18 SURVEYOR CERTIFICATION</p> <p><i>I hereby certify that the well location shown on this plat was plotted from field notes of actual surveys made by me or under my supervision, and that the same is true and correct to the best of my belief.</i></p> <p>Date of Survey</p> <p>Signature and Seal of Professional Surveyor:</p> <p>Certificate Number</p>
			2615'	

Well Name: STATE A A/C 2 #069 API: 30-025-28278 Lease Type: STATE
 Location: 2615' FSL & 1295' FEL T-R-Sec-Spot-Lot: 22S-36E-08I Lease No: 20094-001
 Formation(s): [24130] Eunice; 7 RVRs-QUEEN, South County/State: Lea, NM

Surface Csg

Size: 8-5/8"
 Wt.&Thrd: 24#
 Grade: J-55 STC
 Set @: 577'
 Sxs cmt: 375 sxs
 Circ: 75 sxs
 TOC: Surface
 Hole Size: 12-1/4"

KB: 3562'
 DF:
 GL: 3550'
 Spud Date: 9/8/1983
 Compl. Date: 10/9/1983

History - Highlights

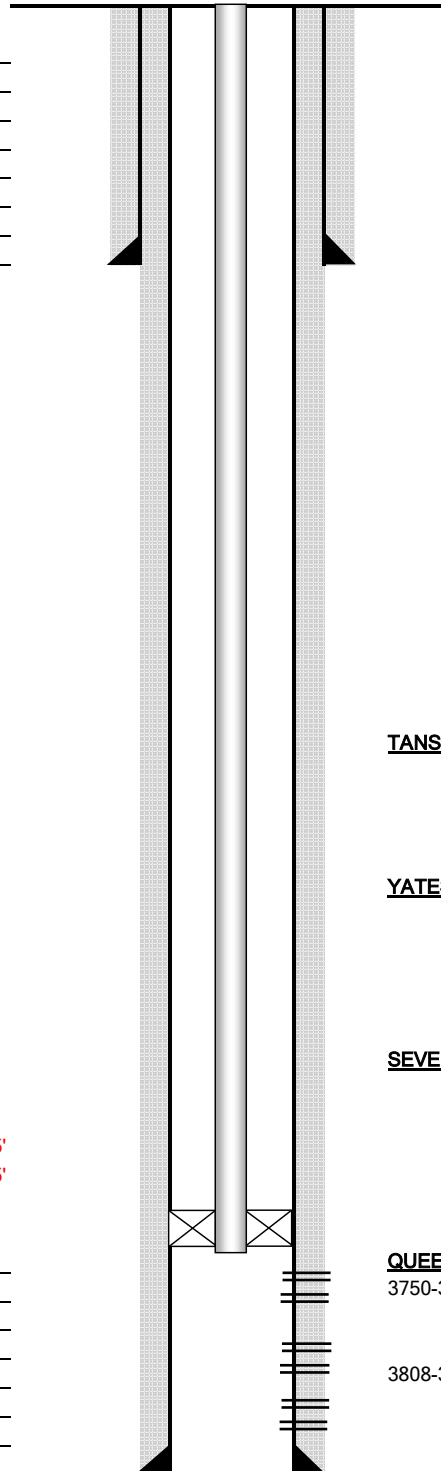
1983-10: Drilled INJ, completed in 2 stages. Low volume, high pressure injector from start

1984-10: Acidized, increased inj from 18 to 128 BWPD

1991-12: TA well

PROPOSED: Reactivate Injector. Clean out to PBTD @ 3897'. Circulate well clean. Acidize 3750-3862' w/ 5000 gals 15% NEFE HCL acid, 1500# rocksalt & flush w/ 500 bbls 2% KCL. RIH w/ injection string & return to injection.

All info from OCD well files ONLY

PROPOSED

AS-1X Pkr 3725'
 EOT 3725'

Production Csg

Size: 5-1/2"
 Wt.&Thrd: 14#
 Grade: K-55 STC
 Set @: 3900'
 Sxs Cmt: 800 sxs
 Circ: 45 sxs
 TOC: Surface
 Hole Size: 7-7/8"

QUEEN (Top @ 3749')

3750-3802' (1 SPF, 44 holes) - Oct 1983
 Acidized w/ 2500 gals 15% NEFE HCL acid

3808-3816', 3821-3835', 3838-3843', 3846-3848', 3852-3862' (1 SPF, 53 holes) - Oct 19
 Acidized w/ 2500 gals 15% NEFE HCL acid

PBTD 3897'
 TD 3900'

Tubulars - Capacities and Performance

2-3/8" Tubing (~119 jts 2-3/8" IPC tbg, AS-1X Packer)

Well Name: STATE A A/C 2 #069 API: 30-025-28278 Lease Type: STATE
 Location: 2615' FSL & 1295' FEL T-R-Sec-Spot-Lot: 22S-36E-08I Lease No: 20094-001
 Formation(s): [24130] Eunice; 7 RVRs-QUEEN, South County/State: Lea, NM

Surface Csg

Size: 8-5/8"
 Wt.&Thrd: 24#
 Grade: J-55 STC
 Set @: 577'
 Sxs cmt: 375 sxs
 Circ: 75 sxs
 TOC: Surface
 Hole Size: 12-1/4"

KB: 3562'
 DF:
 GL: 3550'
 Spud Date: 9/8/1983
 Compl. Date: 10/9/1983

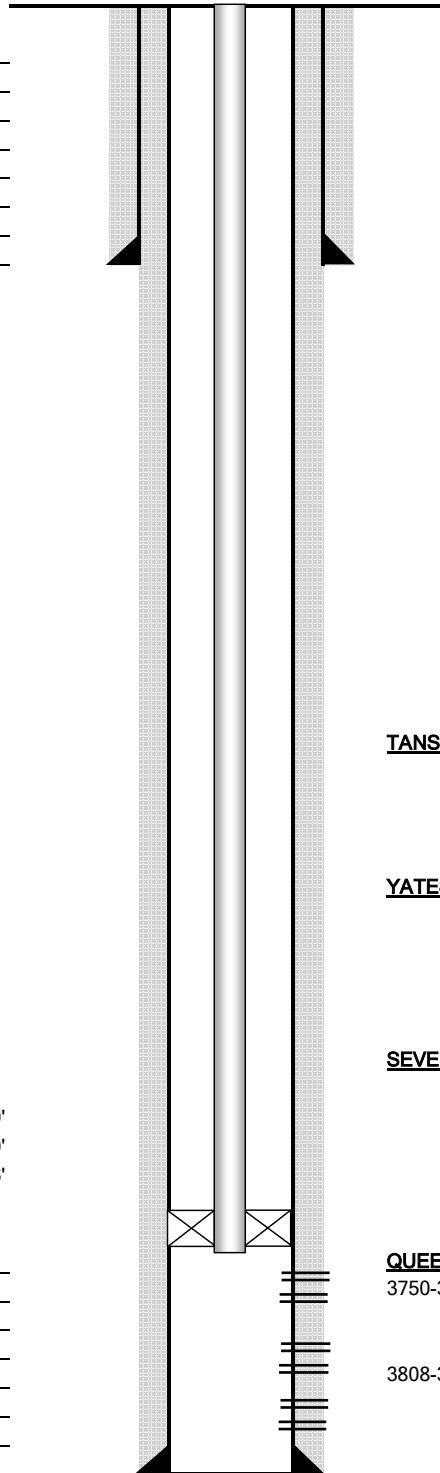
History - Highlights

1983-10: Drilled INJ, completed in 2 stages. Low volume, high pressure injector from start

1984-10: Acidized, increased inj from 18 to 128 BWPD

1991-12: TA well

All info from OCD well files ONLY

CURRENT

TANSILL (Top @ 3007')

YATES (Top @ 3169')

SEVEN RIVERS (Top @ 3356')

On/Off Tool 3709'
 Otis Pkr 3710'
 EOT 3716'

Production Csg

Size: 5-1/2"
 Wt.&Thrd: 14#
 Grade: K-55 STC
 Set @: 3900'
 Sxs Cmt: 800 sxs
 Circ: 45 sxs
 TOC: Surface
 Hole Size: 7-7/8"

QUEEN (Top @ 3749')

3750-3802' (1 SPF, 44 holes) - Oct 1983
 Acidized w/ 2500 gals 15% NEFE HCL acid

3808-3816', 3821-3835', 3838-3843', 3846-3848', 3852-3862' (1 SPF, 53 holes) - Oct 19
 Acidized w/ 2500 gals 15% NEFE HCL acid

PBTB 3897'
 TD 3900'

Tubulars - Capacities and Performance

2-3/8" Tubing (119 jts 2-3/8" cmt lined tbg, On/Off tool, N-Profile Nipple)
 Otis Perma-latch Packer, set w/ 10,000 lb tension

District I
1625 N. French Dr., Hobbs, NM 88240
Phone:(575) 393-6161 Fax:(575) 393-0720
District II
811 S. First St., Artesia, NM 88210
Phone:(575) 748-1283 Fax:(575) 748-9720
District III
1000 Rio Brazos Rd., Aztec, NM 87410
Phone:(505) 334-6178 Fax:(505) 334-6170
District IV
1220 S. St Francis Dr., Santa Fe, NM 87505
Phone:(505) 476-3470 Fax:(505) 476-3462

State of New Mexico
Energy, Minerals and Natural Resources
Oil Conservation Division
1220 S. St Francis Dr.
Santa Fe, NM 87505

CONDITIONS

Action 168774

CONDITIONS

Operator: FAE II Operating LLC 11757 Katy Freeway, Suite 725 Houston, TX 77079	OGRID: 329326
	Action Number: 168774
	Action Type: [C-101] Drilling Non-Federal/Indian (APD)

CONDITIONS

Created By	Condition	Condition Date
pkautz	In addition to the requirements of the APD, operator shall complete the conditions contained in the UIC permit including logging (CBL for liner; mud logging, etc.), well testing, and reporting as stipulated.	8/8/2023