

District I

1625 N. French Dr., Hobbs, NM 88240
Phone:(575) 393-6161 Fax:(575) 393-0720

District II

811 S. First St., Artesia, NM 88210
Phone:(575) 748-1283 Fax:(575) 748-9720

District III

1000 Rio Brazos Rd., Aztec, NM 87410
Phone:(505) 334-6178 Fax:(505) 334-6170

District IV

1220 S. St Francis Dr., Santa Fe, NM 87505
Phone:(505) 476-3470 Fax:(505) 476-3462

State of New Mexico
Energy, Minerals and Natural Resources
Oil Conservation Division
1220 S. St Francis Dr.
Santa Fe, NM 87505

Form C-101
August 1, 2011

Permit 347750

APPLICATION FOR PERMIT TO DRILL, RE-ENTER, DEEPEN, PLUGBACK, OR ADD A ZONE

1. Operator Name and Address AMEREDEV OPERATING, LLC 2901 Via Fortuna Austin, TX 78746		2. OGRID Number 372224
		3. API Number 30-025-51895
4. Property Code 320645	5. Property Name MAGNOLIA 26 36 22 STATE COM	6. Well No. 182H

7. Surface Location

UL - Lot N	Section 22	Township 26S	Range 36E	Lot Idn N	Feet From 650	N/S Line S	Feet From 1808	E/W Line W	County Lea
---------------	---------------	-----------------	--------------	--------------	------------------	---------------	-------------------	---------------	---------------

8. Proposed Bottom Hole Location

UL - Lot C	Section 15	Township 26S	Range 36E	Lot Idn C	Feet From 50	N/S Line N	Feet From 2310	E/W Line W	County Lea
---------------	---------------	-----------------	--------------	--------------	-----------------	---------------	-------------------	---------------	---------------

9. Pool Information

WC-025 G-08 S263620C;LWR BONE SPRIN	98150
-------------------------------------	-------

Additional Well Information

11. Work Type New Well	12. Well Type OIL	13. Cable/Rotary	14. Lease Type State	15. Ground Level Elevation 2903
16. Multiple N	17. Proposed Depth 20640	18. Formation 2nd Bone Spring Carbonate	19. Contractor	20. Spud Date 1/1/2024
Depth to Ground water		Distance from nearest fresh water well		Distance to nearest surface water

☒ We will be using a closed-loop system in lieu of lined pits

21. Proposed Casing and Cement Program

Type	Hole Size	Casing Size	Casing Weight/ft	Setting Depth	Sacks of Cement	Estimated TOC
Surf	17.5	13.375	54.5	1720	1355	0
Int1	12.25	10.75	45.5	5021	1336	0
Prod	8.75	5.5	17	20640	6385	0

Casing/Cement Program: Additional Comments

--

22. Proposed Blowout Prevention Program

Type	Working Pressure	Test Pressure	Manufacturer
Double Ram	5000	5000	TBD

23. I hereby certify that the information given above is true and complete to the best of my knowledge and belief. I further certify I have complied with 19.15.14.9 (A) NMAC <input checked="" type="checkbox"/> and/or 19.15.14.9 (B) NMAC <input checked="" type="checkbox"/> if applicable. Signature:	OIL CONSERVATION DIVISION	
Printed Name: Electronically filed by Christie Hanna	Approved By: Paul F Kautz	
Title: Regulatory	Title: Geologist	
Email Address: channa@ameredev.com	Approved Date: 8/25/2023	Expiration Date: 8/25/2025
Date: 8/18/2023	Phone: 737-300-4723	Conditions of Approval Attached

District I
1625 N. French Dr., Hobbs, NM 88240
Phone: (575) 393-6161 Fax: (575) 393-0720
District II
811 S. First St., Artesia, NM 88210
Phone: (575) 748-1283 Fax: (575) 748-9720
District III
1000 Rio Brazos Road, Aztec, NM 87410
Phone: (505) 334-6178 Fax: (505) 334-6170
District IV
1220 S. St. Francis Dr., Santa Fe, NM 87505
Phone: (505) 476-3460 Fax: (505) 476-3462

State of New Mexico
Energy, Minerals & Natural Resources
Department
OIL CONSERVATION DIVISION
1220 South St. Francis Dr.
Santa Fe, NM 87505

FORM C-102
Revised August 1, 2011
Submit one copy to appropriate
District Office

☐ AMENDED REPORT

WELL LOCATION AND ACREAGE DEDICATION PLAT

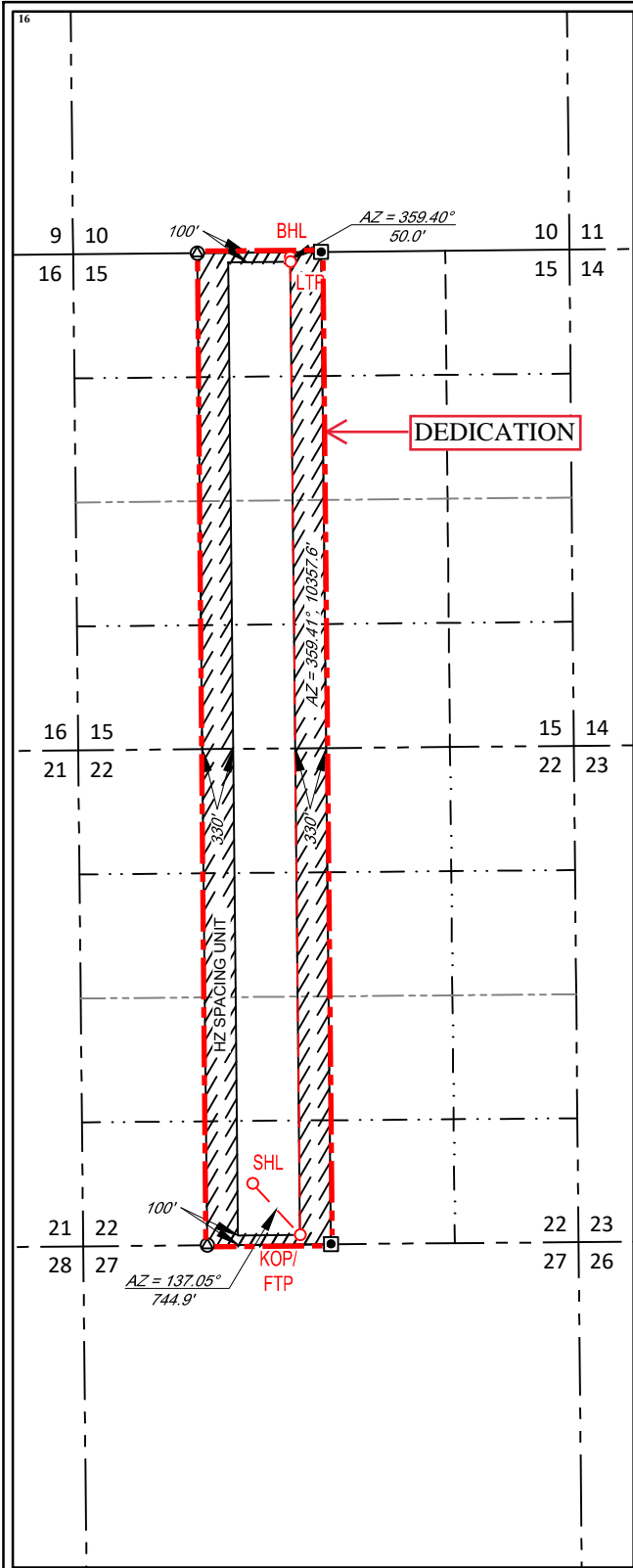
¹ API Number 30-025-	² Pool Code 98150	³ Pool Name WC-025 G-08 S263620C; LWR BONE SPRING
⁴ Property Code 320645	⁵ Property Name MAGNOLIA 26 36 22 STATE COM	
⁷ OGRID No. 372224	⁸ Operator Name AMEREDEV OPERATING, LLC.	⁶ Well Number 182H ⁹ Elevation 2903'

¹⁰ Surface Location									
UL or lot no. N	Section 22	Township 26-S	Range 36-E	Lot Idn -	Feet from the 650'	North/South line SOUTH	Feet from the 1808'	East/West line WEST	County LEA

¹¹ Bottom Hole Location If Different From Surface									
UL or lot no. C	Section 15	Township 26-S	Range 36-E	Lot Idn -	Feet from the 50'	North/South line NORTH	Feet from the 2310'	East/West line WEST	County LEA

¹² Dedicated Acres 320	¹³ Joint or Infill	¹⁴ Consolidation Code C	¹⁵ Order No.
--------------------------------------	-------------------------------	---------------------------------------	-------------------------

No allowable will be assigned to this completion until all interests have been consolidated or a non-standard unit has been approved by the division.



NEW MEXICO EAST
NAD 1983

SURFACE LOCATION (SHL)

650' FSL - SEC. 22
1808' FWL - SEC. 22
X=875312 Y=373886
LAT.: N 32.0233142
LONG.: W 103.2557088

KICK OFF POINT (KOP)
FIRST TAKE POINT (FTP)

100' FSL - SEC. 22
2310' FWL - SEC. 22
X=875820 Y=373341
LAT.: N 32.0218016
LONG.: W 103.2540889

LAST TAKE POINT (LTP)

100' FNL - SEC. 15
2310' FWL - SEC. 15
X=875714 Y=383698
LAT.: N 32.0502710
LONG.: W 103.2540965

BOTTOM HOLE LOCATION (BHL)

50' FNL - SEC. 15
2310' FWL - SEC. 15
X=875714 Y=383748
LAT.: N 32.0504084
LONG.: W 103.2540965

¹⁷OPERATOR CERTIFICATION

I hereby certify that the information contained herein is true and complete to the best of my knowledge and belief, and that this organization either owns a working interest or unleased mineral interest in the land including the proposed bottom hole location or has a right to drill this well at this location pursuant to a contract with an owner of such a mineral or working interest, or to a voluntary pooling agreement or a compulsory pooling order heretofore entered by the division.

Floyd Hammond 6/28/2023
Signature Date

hammond@ameredev.com
Printed Name E-mail Address

¹⁸SURVEYOR CERTIFICATION

I hereby certify that the well location shown on this plat was plotted from field notes of actual surveys made by me or under my supervision, and that the same is true to the best of my belief.

05/11/2019
Date of Survey
Signature and Seal of Professional Surveyor

ANGEL M. BAEZA
NEW MEXICO
25116
PROFESSIONAL SURVEYOR

Certificate Number

District I

1625 N. French Dr., Hobbs, NM 88240
 Phone:(575) 393-6161 Fax:(575) 393-0720

District II

811 S. First St., Artesia, NM 88210
 Phone:(575) 748-1283 Fax:(575) 748-9720

District III

1000 Rio Brazos Rd., Aztec, NM 87410
 Phone:(505) 334-6178 Fax:(505) 334-6170

District IV

1220 S. St Francis Dr., Santa Fe, NM 87505
 Phone:(505) 476-3470 Fax:(505) 476-3462

State of New Mexico
Energy, Minerals and Natural Resources
Oil Conservation Division
1220 S. St Francis Dr.
Santa Fe, NM 87505

Form APD Conditions

Permit 347750

PERMIT CONDITIONS OF APPROVAL

Operator Name and Address: AMEREDEV OPERATING, LLC [372224] 2901 Via Fortuna Austin, TX 78746	API Number: 30-025-51895
	Well: MAGNOLIA 26 36 22 STATE COM #182H

OCD Reviewer	Condition
pkautz	Notify OCD 24 hours prior to casing & cement
pkautz	Will require a File As Drilled C-102 and a Directional Survey with the C-104
pkautz	Once the well is spud, to prevent ground water contamination through whole or partial conduits from the surface, the operator shall drill without interruption through the fresh water zone or zones and shall immediately set in cement the water protection string
pkautz	Oil base muds are not to be used until fresh water zones are cased and cemented providing isolation from the oil or diesel. This includes synthetic oils. Oil based mud, drilling fluids and solids must be contained in a steel closed loop system
pkautz	Cement is required to circulate on both surface and intermediate1 strings of casing
pkautz	The Operator is to notify NMOCD by sundry (Form C-103) within ten (10) days of the well being spud
pkautz	IF ON ANY STRING CEMENT DOES NOT CIRCULATE, A RCBL MUST BE RUN ON THAT STRING OF CASING.



Ameredev Operating

**Lea County, NM (N83-NME)
MAGNOLIA ST COM PROJECT
MAGNOLIA ST COM 26 36 22 #182H**

OWB

Plan: PWP

Standard Planning Report - Geographic

14 June, 2023



Planning Report - Geographic

Database:	AUS-COMPASS - EDM_15 - 32bit	Local Co-ordinate Reference:	Well MAGNOLIA ST COM 26 36 22 #182H
Company:	Ameredev Operating	TVD Reference:	Mean Sea Level (System)
Project:	Lea County, NM (N83-NME)	MD Reference:	Mean Sea Level (System)
Site:	MAGNOLIA ST COM PROJECT	North Reference:	Grid
Well:	MAGNOLIA ST COM 26 36 22 #182H	Survey Calculation Method:	Minimum Curvature
Wellbore:	OWB		
Design:	PWP		

Project	Lea County, NM (N83-NME)		
Map System:	US State Plane 1983	System Datum:	Mean Sea Level
Geo Datum:	North American Datum 1983		
Map Zone:	New Mexico Eastern Zone		

Site		MAGNOLIA ST COM PROJECT			
Site Position:		Northing:	373,452.69 usft	Latitude:	32.0221651
From:	Lat/Long	Easting:	873,778.76 usft	Longitude:	-103.2606704
Position Uncertainty:		0.0 usft	Slot Radius:	13-3/16 "	

Well		MAGNOLIA ST COM 26 36 22 #182H				
Well Position	+N/-S	0.0 usft	Northing:	373,459.67 usft	Latitude:	32.0221627
	+E/-W	0.0 usft	Easting:	874,568.52 usft	Longitude:	-103.2581223
Position Uncertainty		0.0 usft	Wellhead Elevation:	usft	Ground Level:	usft
Grid Convergence:		0.57 °				

Wellbore	OWB				
Magnetics	Model Name	Sample Date	Declination (°)	Dip Angle (°)	Field Strength (nT)
	IGRF2020	6/13/2023	6.15	59.69	47,222.17696360

Design	PWP			
Audit Notes:				
Version:	Phase:	PROTOTYPE	Tie On Depth:	0.0
Vertical Section:	Depth From (TVD) (usft)	+N/-S (usft)	+E/-W (usft)	Direction (°)
	0.0	0.0	0.0	359.41

Plan Survey Tool Program	Date	6/14/2023		
Depth From (usft)	Depth To (usft)	Survey (Wellbore)	Tool Name	Remarks
1	0.0	20,640.4 PWP (OWB)	MWD	
			OWSG MWD - Standard	

Plan Sections										
Measured Depth (usft)	Inclination (°)	Azimuth (°)	Vertical Depth (usft)	+N/-S (usft)	+E/-W (usft)	Dogleg Rate (°/100usft)	Build Rate (°/100usft)	Turn Rate (°/100usft)	TFO (°)	Target
0.0	0.00	0.00	0.0	0.0	0.0	0.00	0.00	0.00	0.00	
1,000.0	0.00	0.00	1,000.0	0.0	0.0	0.00	0.00	0.00	0.00	
1,550.0	11.00	115.37	1,546.6	-22.5	47.6	2.00	2.00	0.00	115.37	
8,289.0	11.00	115.37	8,161.9	-573.5	1,209.4	0.00	0.00	0.00	0.00	
8,839.0	0.00	0.00	8,708.5	-596.0	1,257.0	2.00	-2.00	0.00	180.00	
9,483.1	0.00	0.00	9,352.5	-596.0	1,257.0	0.00	0.00	0.00	0.00	
10,233.1	90.00	359.41	9,830.0	-118.6	1,252.1	12.00	12.00	-0.08	359.41	
20,640.4	90.00	359.41	9,830.0	10,288.2	1,145.1	0.00	0.00	0.00	0.00	BHL (MSC #182H)



Planning Report - Geographic

Database:	AUS-COMPASS - EDM_15 - 32bit	Local Co-ordinate Reference:	Well MAGNOLIA ST COM 26 36 22 #182H
Company:	Ameredev Operating	TVD Reference:	Mean Sea Level (System)
Project:	Lea County, NM (N83-NME)	MD Reference:	Mean Sea Level (System)
Site:	MAGNOLIA ST COM PROJECT	North Reference:	Grid
Well:	MAGNOLIA ST COM 26 36 22 #182H	Survey Calculation Method:	Minimum Curvature
Wellbore:	OWB		
Design:	PWP		

Planned Survey									
Measured Depth (usft)	Inclination (°)	Azimuth (°)	Vertical Depth (usft)	+N/-S (usft)	+E/-W (usft)	Map Northing (usft)	Map Easting (usft)	Latitude	Longitude
0.0	0.00	0.00	0.0	0.0	0.0	373,459.67	874,568.52	32.0221627	-103.2581223
Dewey Lake									
100.0	0.00	0.00	100.0	0.0	0.0	373,459.67	874,568.52	32.0221627	-103.2581223
200.0	0.00	0.00	200.0	0.0	0.0	373,459.67	874,568.52	32.0221627	-103.2581223
300.0	0.00	0.00	300.0	0.0	0.0	373,459.67	874,568.52	32.0221627	-103.2581223
400.0	0.00	0.00	400.0	0.0	0.0	373,459.67	874,568.52	32.0221627	-103.2581223
500.0	0.00	0.00	500.0	0.0	0.0	373,459.67	874,568.52	32.0221627	-103.2581223
600.0	0.00	0.00	600.0	0.0	0.0	373,459.67	874,568.52	32.0221627	-103.2581223
700.0	0.00	0.00	700.0	0.0	0.0	373,459.67	874,568.52	32.0221627	-103.2581223
800.0	0.00	0.00	800.0	0.0	0.0	373,459.67	874,568.52	32.0221627	-103.2581223
900.0	0.00	0.00	900.0	0.0	0.0	373,459.67	874,568.52	32.0221627	-103.2581223
1,000.0	0.00	0.00	1,000.0	0.0	0.0	373,459.67	874,568.52	32.0221627	-103.2581223
Start Build 2.00									
1,100.0	2.00	115.37	1,100.0	-0.7	1.6	373,458.92	874,570.10	32.0221606	-103.2581172
1,200.0	4.00	115.37	1,199.8	-3.0	6.3	373,456.68	874,574.82	32.0221543	-103.2581020
1,300.0	6.00	115.37	1,299.5	-6.7	14.2	373,452.95	874,582.70	32.0221439	-103.2580768
1,400.0	8.00	115.37	1,398.7	-11.9	25.2	373,447.73	874,593.71	32.0221292	-103.2580414
1,500.0	10.00	115.37	1,497.5	-18.6	39.3	373,441.03	874,607.84	32.0221104	-103.2579960
1,550.0	11.00	115.37	1,546.6	-22.5	47.6	373,437.12	874,616.08	32.0220994	-103.2579696
Start 6739.0 hold at 1550.0 MD									
1,600.0	11.00	115.37	1,595.7	-26.6	56.2	373,433.03	874,624.70	32.0220880	-103.2579419
1,700.0	11.00	115.37	1,693.9	-34.8	73.4	373,424.86	874,641.94	32.0220650	-103.2578865
1,701.1	11.00	115.37	1,695.0	-34.9	73.6	373,424.77	874,642.14	32.0220648	-103.2578859
Rustler									
1,800.0	11.00	115.37	1,792.0	-43.0	90.7	373,416.68	874,659.18	32.0220421	-103.2578312
1,900.0	11.00	115.37	1,890.2	-51.2	107.9	373,408.51	874,676.42	32.0220192	-103.2577758
2,000.0	11.00	115.37	1,988.4	-59.3	125.1	373,400.34	874,693.66	32.0219962	-103.2577205
2,100.0	11.00	115.37	2,086.5	-67.5	142.4	373,392.16	874,710.90	32.0219733	-103.2576651
2,171.8	11.00	115.37	2,157.0	-73.4	154.8	373,386.29	874,723.28	32.0219568	-103.2576254
Salado									
2,200.0	11.00	115.37	2,184.7	-75.7	159.6	373,383.99	874,728.14	32.0219503	-103.2576097
2,300.0	11.00	115.37	2,282.8	-83.9	176.9	373,375.81	874,745.39	32.0219274	-103.2575544
2,400.0	11.00	115.37	2,381.0	-92.0	194.1	373,367.64	874,762.63	32.0219045	-103.2574990
2,500.0	11.00	115.37	2,479.2	-100.2	211.3	373,359.46	874,779.87	32.0218815	-103.2574437
2,600.0	11.00	115.37	2,577.3	-108.4	228.6	373,351.29	874,797.11	32.0218586	-103.2573883
2,700.0	11.00	115.37	2,675.5	-116.6	245.8	373,343.11	874,814.35	32.0218356	-103.2573330
2,800.0	11.00	115.37	2,773.7	-124.7	263.1	373,334.94	874,831.59	32.0218127	-103.2572776
2,900.0	11.00	115.37	2,871.8	-132.9	280.3	373,326.76	874,848.83	32.0217898	-103.2572222
3,000.0	11.00	115.37	2,970.0	-141.1	297.6	373,318.59	874,866.07	32.0217668	-103.2571669
3,100.0	11.00	115.37	3,068.1	-149.3	314.8	373,310.41	874,883.31	32.0217439	-103.2571115
3,164.0	11.00	115.37	3,131.0	-154.5	325.8	373,305.18	874,894.35	32.0217292	-103.2570761
Tansill									
3,200.0	11.00	115.37	3,166.3	-157.4	332.0	373,302.24	874,900.55	32.0217209	-103.2570562
3,300.0	11.00	115.37	3,264.5	-165.6	349.3	373,294.06	874,917.80	32.0216980	-103.2570008
3,400.0	11.00	115.37	3,362.6	-173.8	366.5	373,285.89	874,935.04	32.0216751	-103.2569454
3,500.0	11.00	115.37	3,460.8	-182.0	383.8	373,277.71	874,952.28	32.0216521	-103.2568901
3,600.0	11.00	115.37	3,559.0	-190.1	401.0	373,269.54	874,969.52	32.0216292	-103.2568347
3,700.0	11.00	115.37	3,657.1	-198.3	418.2	373,261.36	874,986.76	32.0216062	-103.2567794
3,800.0	11.00	115.37	3,755.3	-206.5	435.5	373,253.19	875,004.00	32.0215833	-103.2567240
3,846.6	11.00	115.37	3,801.0	-210.3	443.5	373,249.38	875,012.03	32.0215726	-103.2566982
Capitan									
3,900.0	11.00	115.37	3,853.5	-214.7	452.7	373,245.01	875,021.24	32.0215603	-103.2566686
4,000.0	11.00	115.37	3,951.6	-222.8	470.0	373,236.84	875,038.48	32.0215374	-103.2566133
4,100.0	11.00	115.37	4,049.8	-231.0	487.2	373,228.67	875,055.72	32.0215145	-103.2565579



Planning Report - Geographic

Database:	AUS-COMPASS - EDM_15 - 32bit	Local Co-ordinate Reference:	Well MAGNOLIA ST COM 26 36 22 #182H
Company:	Ameredev Operating	TVD Reference:	Mean Sea Level (System)
Project:	Lea County, NM (N83-NME)	MD Reference:	Mean Sea Level (System)
Site:	MAGNOLIA ST COM PROJECT	North Reference:	Grid
Well:	MAGNOLIA ST COM 26 36 22 #182H	Survey Calculation Method:	Minimum Curvature
Wellbore:	OWB		
Design:	PWP		

Planned Survey										
Measured Depth (usft)	Inclination (°)	Azimuth (°)	Vertical Depth (usft)	+N/-S (usft)	+E/-W (usft)	Map Northing (usft)	Map Easting (usft)	Latitude	Longitude	
4,200.0	11.00	115.37	4,147.9	-239.2	504.4	373,220.49	875,072.97	32.0214915	-103.2565026	
4,300.0	11.00	115.37	4,246.1	-247.4	521.7	373,212.32	875,090.21	32.0214686	-103.2564472	
4,400.0	11.00	115.37	4,344.3	-255.5	538.9	373,204.14	875,107.45	32.0214456	-103.2563919	
4,500.0	11.00	115.37	4,442.4	-263.7	556.2	373,195.97	875,124.69	32.0214227	-103.2563365	
4,600.0	11.00	115.37	4,540.6	-271.9	573.4	373,187.79	875,141.93	32.0213998	-103.2562811	
4,700.0	11.00	115.37	4,638.8	-280.1	590.7	373,179.62	875,159.17	32.0213768	-103.2562258	
4,800.0	11.00	115.37	4,736.9	-288.2	607.9	373,171.44	875,176.41	32.0213539	-103.2561704	
4,900.0	11.00	115.37	4,835.1	-296.4	625.1	373,163.27	875,193.65	32.0213309	-103.2561151	
4,962.1	11.00	115.37	4,896.0	-301.5	635.8	373,158.19	875,204.35	32.0213167	-103.2560807	
Lamar										
5,000.0	11.00	115.37	4,933.2	-304.6	642.4	373,155.09	875,210.89	32.0213080	-103.2560597	
5,100.0	11.00	115.37	5,031.4	-312.8	659.6	373,146.92	875,228.14	32.0212851	-103.2560043	
5,165.8	11.00	115.37	5,096.0	-318.1	671.0	373,141.54	875,239.48	32.0212700	-103.2559679	
Bell Canyon										
5,200.0	11.00	115.37	5,129.6	-320.9	676.9	373,138.74	875,245.38	32.0212621	-103.2559490	
5,300.0	11.00	115.37	5,227.7	-329.1	694.1	373,130.57	875,262.62	32.0212392	-103.2558936	
5,400.0	11.00	115.37	5,325.9	-337.3	711.3	373,122.39	875,279.86	32.0212162	-103.2558383	
5,500.0	11.00	115.37	5,424.1	-345.5	728.6	373,114.22	875,297.10	32.0211933	-103.2557829	
5,600.0	11.00	115.37	5,522.2	-353.6	745.8	373,106.04	875,314.34	32.0211704	-103.2557275	
5,700.0	11.00	115.37	5,620.4	-361.8	763.1	373,097.87	875,331.58	32.0211474	-103.2556722	
5,800.0	11.00	115.37	5,718.5	-370.0	780.3	373,089.69	875,348.82	32.0211245	-103.2556168	
5,900.0	11.00	115.37	5,816.7	-378.2	797.5	373,081.52	875,366.06	32.0211015	-103.2555615	
6,000.0	11.00	115.37	5,914.9	-386.3	814.8	373,073.34	875,383.30	32.0210786	-103.2555061	
6,100.0	11.00	115.37	6,013.0	-394.5	832.0	373,065.17	875,400.55	32.0210556	-103.2554508	
6,200.0	11.00	115.37	6,111.2	-402.7	849.3	373,057.00	875,417.79	32.0210327	-103.2553954	
6,300.0	11.00	115.37	6,209.4	-410.9	866.5	373,048.82	875,435.03	32.0210098	-103.2553400	
6,400.0	11.00	115.37	6,307.5	-419.0	883.8	373,040.65	875,452.27	32.0209868	-103.2552847	
6,500.0	11.00	115.37	6,405.7	-427.2	901.0	373,032.47	875,469.51	32.0209639	-103.2552293	
6,600.0	11.00	115.37	6,503.8	-435.4	918.2	373,024.30	875,486.75	32.0209409	-103.2551740	
6,700.0	11.00	115.37	6,602.0	-443.5	935.5	373,016.12	875,503.99	32.0209180	-103.2551186	
6,791.7	11.00	115.37	6,692.0	-451.0	951.3	373,008.63	875,519.80	32.0208970	-103.2550679	
Brushy Canyon										
6,800.0	11.00	115.37	6,700.2	-451.7	952.7	373,007.95	875,521.23	32.0208951	-103.2550633	
6,900.0	11.00	115.37	6,798.3	-459.9	970.0	372,999.77	875,538.47	32.0208721	-103.2550079	
7,000.0	11.00	115.37	6,896.5	-468.1	987.2	372,991.60	875,555.72	32.0208492	-103.2549525	
7,100.0	11.00	115.37	6,994.7	-476.2	1,004.4	372,983.42	875,572.96	32.0208262	-103.2548972	
7,200.0	11.00	115.37	7,092.8	-484.4	1,021.7	372,975.25	875,590.20	32.0208033	-103.2548418	
7,300.0	11.00	115.37	7,191.0	-492.6	1,038.9	372,967.07	875,607.44	32.0207804	-103.2547865	
7,400.0	11.00	115.37	7,289.1	-500.8	1,056.2	372,958.90	875,624.68	32.0207574	-103.2547311	
7,500.0	11.00	115.37	7,387.3	-508.9	1,073.4	372,950.72	875,641.92	32.0207345	-103.2546757	
7,600.0	11.00	115.37	7,485.5	-517.1	1,090.6	372,942.55	875,659.16	32.0207115	-103.2546204	
7,700.0	11.00	115.37	7,583.6	-525.3	1,107.9	372,934.37	875,676.40	32.0206886	-103.2545650	
7,742.1	11.00	115.37	7,625.0	-528.7	1,115.1	372,930.93	875,683.67	32.0206789	-103.2545417	
Bone Spring Lime										
7,800.0	11.00	115.37	7,681.8	-533.5	1,125.1	372,926.20	875,693.64	32.0206656	-103.2545097	
7,900.0	11.00	115.37	7,780.0	-541.6	1,142.4	372,918.02	875,710.88	32.0206427	-103.2544543	
8,000.0	11.00	115.37	7,878.1	-549.8	1,159.6	372,909.85	875,728.13	32.0206198	-103.2543990	
8,100.0	11.00	115.37	7,976.3	-558.0	1,176.8	372,901.67	875,745.37	32.0205968	-103.2543436	
8,200.0	11.00	115.37	8,074.4	-566.2	1,194.1	372,893.50	875,762.61	32.0205739	-103.2542882	
8,289.0	11.00	115.37	8,161.9	-573.5	1,209.4	372,886.22	875,777.96	32.0205535	-103.2542390	
Start Drop -2.00										
8,300.0	10.78	115.37	8,172.6	-574.3	1,211.3	372,885.33	875,779.83	32.0205510	-103.2542329	
8,400.0	8.78	115.37	8,271.2	-581.6	1,226.7	372,878.06	875,795.18	32.0205305	-103.2541837	
8,500.0	6.78	115.37	8,370.2	-587.4	1,238.9	372,872.26	875,807.41	32.0205143	-103.2541444	



Planning Report - Geographic

Database:	AUS-COMPASS - EDM_15 - 32bit	Local Co-ordinate Reference:	Well MAGNOLIA ST COM 26 36 22 #182H
Company:	Ameredev Operating	TVD Reference:	Mean Sea Level (System)
Project:	Lea County, NM (N83-NME)	MD Reference:	Mean Sea Level (System)
Site:	MAGNOLIA ST COM PROJECT	North Reference:	Grid
Well:	MAGNOLIA ST COM 26 36 22 #182H	Survey Calculation Method:	Minimum Curvature
Wellbore:	OWB		
Design:	PWP		

Planned Survey										
Measured Depth (usft)	Inclination (°)	Azimuth (°)	Vertical Depth (usft)	+N/-S (usft)	+E/-W (usft)	Map Northing (usft)	Map Easting (usft)	Latitude	Longitude	
8,600.0	4.78	115.37	8,469.7	-591.7	1,248.0	372,867.94	875,816.51	32.0205022	-103.2541152	
8,700.0	2.78	115.37	8,569.5	-594.6	1,254.0	372,865.12	875,822.47	32.0204942	-103.2540960	
8,800.0	0.78	115.37	8,669.4	-595.9	1,256.8	372,863.79	875,825.28	32.0204905	-103.2540870	
8,839.0	0.00	0.00	8,708.5	-596.0	1,257.0	372,863.67	875,825.52	32.0204902	-103.2540862	
Start 644.0 hold at 8839.0 MD										
8,900.0	0.00	0.00	8,769.4	-596.0	1,257.0	372,863.67	875,825.52	32.0204902	-103.2540862	
9,000.0	0.00	0.00	8,869.4	-596.0	1,257.0	372,863.67	875,825.52	32.0204902	-103.2540862	
9,100.0	0.00	0.00	8,969.4	-596.0	1,257.0	372,863.67	875,825.52	32.0204902	-103.2540862	
9,200.0	0.00	0.00	9,069.4	-596.0	1,257.0	372,863.67	875,825.52	32.0204902	-103.2540862	
9,300.0	0.00	0.00	9,169.4	-596.0	1,257.0	372,863.67	875,825.52	32.0204902	-103.2540862	
9,400.0	0.00	0.00	9,269.4	-596.0	1,257.0	372,863.67	875,825.52	32.0204902	-103.2540862	
9,446.6	0.00	0.00	9,316.0	-596.0	1,257.0	372,863.67	875,825.52	32.0204902	-103.2540862	
First Bone Spring										
9,483.1	0.00	0.00	9,352.5	-596.0	1,257.0	372,863.67	875,825.52	32.0204902	-103.2540862	
KOP-Start DLS 12.00 TFO 359.41										
9,500.0	2.03	359.41	9,369.4	-595.7	1,257.0	372,863.97	875,825.52	32.0204910	-103.2540862	
9,525.0	5.03	359.41	9,394.4	-594.2	1,257.0	372,865.51	875,825.50	32.0204952	-103.2540863	
9,550.0	8.03	359.41	9,419.2	-591.3	1,257.0	372,868.36	875,825.47	32.0205030	-103.2540863	
9,575.0	11.03	359.41	9,443.9	-587.2	1,256.9	372,872.50	875,825.43	32.0205144	-103.2540863	
9,600.0	14.03	359.41	9,468.3	-581.8	1,256.9	372,877.92	875,825.37	32.0205293	-103.2540863	
9,625.0	17.03	359.41	9,492.4	-575.1	1,256.8	372,884.61	875,825.30	32.0205477	-103.2540863	
9,650.0	20.03	359.41	9,516.1	-567.1	1,256.7	372,892.56	875,825.22	32.0205696	-103.2540863	
9,675.0	23.03	359.41	9,539.3	-557.9	1,256.6	372,901.73	875,825.13	32.0205948	-103.2540863	
9,700.0	26.03	359.41	9,562.1	-547.6	1,256.5	372,912.11	875,825.02	32.0206233	-103.2540863	
9,725.0	29.03	359.41	9,584.2	-536.0	1,256.4	372,923.67	875,824.90	32.0206551	-103.2540863	
9,750.0	32.03	359.41	9,605.7	-523.3	1,256.3	372,936.36	875,824.77	32.0206900	-103.2540863	
9,775.0	35.03	359.41	9,626.6	-509.5	1,256.1	372,950.17	875,824.63	32.0207279	-103.2540863	
9,800.0	38.03	359.41	9,646.7	-494.6	1,256.0	372,965.05	875,824.48	32.0207688	-103.2540863	
9,825.0	41.03	359.41	9,666.0	-478.7	1,255.8	372,980.96	875,824.31	32.0208126	-103.2540864	
9,850.0	44.03	359.41	9,684.4	-461.8	1,255.6	372,997.86	875,824.14	32.0208590	-103.2540864	
9,875.0	47.03	359.41	9,701.9	-444.0	1,255.4	373,015.70	875,823.95	32.0209081	-103.2540864	
9,900.0	50.03	359.41	9,718.4	-425.2	1,255.2	373,034.43	875,823.76	32.0209595	-103.2540864	
9,925.0	53.03	359.41	9,734.0	-405.7	1,255.0	373,054.00	875,823.56	32.0210133	-103.2540864	
9,950.0	56.03	359.41	9,748.5	-385.3	1,254.8	373,074.36	875,823.35	32.0210693	-103.2540865	
9,975.0	59.03	359.41	9,761.9	-364.2	1,254.6	373,095.45	875,823.13	32.0211273	-103.2540865	
10,000.0	62.03	359.41	9,774.2	-342.5	1,254.4	373,117.21	875,822.91	32.0211871	-103.2540865	
10,025.0	65.03	359.41	9,785.3	-320.1	1,254.2	373,139.58	875,822.68	32.0212486	-103.2540865	
10,050.0	68.03	359.41	9,795.3	-297.2	1,253.9	373,162.51	875,822.44	32.0213116	-103.2540865	
10,075.0	71.03	359.41	9,804.0	-273.7	1,253.7	373,185.93	875,822.20	32.0213760	-103.2540866	
10,100.0	74.03	359.41	9,811.5	-249.9	1,253.4	373,209.77	875,821.96	32.0214415	-103.2540866	
10,101.7	74.23	359.41	9,812.0	-248.3	1,253.4	373,211.38	875,821.94	32.0214459	-103.2540866	
Second Bone Spring										
10,125.0	77.03	359.41	9,817.8	-225.7	1,253.2	373,233.98	875,821.71	32.0215081	-103.2540866	
10,150.0	80.03	359.41	9,822.8	-201.2	1,252.9	373,258.47	875,821.46	32.0215754	-103.2540866	
10,175.0	83.03	359.41	9,826.4	-176.5	1,252.7	373,283.20	875,821.20	32.0216434	-103.2540866	
10,200.0	86.03	359.41	9,828.8	-151.6	1,252.4	373,308.08	875,820.95	32.0217118	-103.2540867	
10,225.0	89.03	359.41	9,829.9	-126.6	1,252.2	373,333.05	875,820.69	32.0217804	-103.2540867	
10,233.1	90.00	359.41	9,830.0	-118.6	1,252.1	373,341.11	875,820.61	32.0218025	-103.2540867	
LP-Start 10407.3 hold at 10233.1 MD										
10,300.0	90.00	359.41	9,830.0	-51.6	1,251.4	373,408.05	875,819.92	32.0219865	-103.2540868	
10,400.0	90.00	359.41	9,830.0	48.4	1,250.4	373,508.04	875,818.89	32.0222614	-103.2540869	
10,500.0	90.00	359.41	9,830.0	148.4	1,249.3	373,608.04	875,817.86	32.0225363	-103.2540870	
10,600.0	90.00	359.41	9,830.0	248.4	1,248.3	373,708.03	875,816.83	32.0228111	-103.2540871	
10,700.0	90.00	359.41	9,830.0	348.4	1,247.3	373,808.03	875,815.81	32.0230860	-103.2540871	



Planning Report - Geographic

Database:	AUS-COMPASS - EDM_15 - 32bit	Local Co-ordinate Reference:	Well MAGNOLIA ST COM 26 36 22 #182H
Company:	Ameredev Operating	TVD Reference:	Mean Sea Level (System)
Project:	Lea County, NM (N83-NME)	MD Reference:	Mean Sea Level (System)
Site:	MAGNOLIA ST COM PROJECT	North Reference:	Grid
Well:	MAGNOLIA ST COM 26 36 22 #182H	Survey Calculation Method:	Minimum Curvature
Wellbore:	OWB		
Design:	PWP		

Planned Survey									
Measured Depth (usft)	Inclination (°)	Azimuth (°)	Vertical Depth (usft)	+N/-S (usft)	+E/-W (usft)	Map Northing (usft)	Map Easting (usft)	Latitude	Longitude
10,800.0	90.00	359.41	9,830.0	448.3	1,246.3	373,908.02	875,814.78	32.0233609	-103.2540872
10,900.0	90.00	359.41	9,830.0	548.3	1,245.2	374,008.02	875,813.75	32.0236357	-103.2540873
11,000.0	90.00	359.41	9,830.0	648.3	1,244.2	374,108.01	875,812.72	32.0239106	-103.2540874
11,100.0	90.00	359.41	9,830.0	748.3	1,243.2	374,208.01	875,811.69	32.0241855	-103.2540875
11,200.0	90.00	359.41	9,830.0	848.3	1,242.1	374,308.00	875,810.66	32.0244603	-103.2540876
11,300.0	90.00	359.41	9,830.0	948.3	1,241.1	374,407.99	875,809.64	32.0247352	-103.2540877
11,400.0	90.00	359.41	9,830.0	1,048.3	1,240.1	374,507.99	875,808.61	32.0250100	-103.2540878
11,500.0	90.00	359.41	9,830.0	1,148.3	1,239.1	374,607.98	875,807.58	32.0252849	-103.2540879
11,600.0	90.00	359.41	9,830.0	1,248.3	1,238.0	374,707.98	875,806.55	32.0255598	-103.2540880
11,700.0	90.00	359.41	9,830.0	1,348.3	1,237.0	374,807.97	875,805.52	32.0258346	-103.2540881
11,800.0	90.00	359.41	9,830.0	1,448.3	1,236.0	374,907.97	875,804.49	32.0261095	-103.2540882
11,900.0	90.00	359.41	9,830.0	1,548.3	1,234.9	375,007.96	875,803.47	32.0263844	-103.2540883
12,000.0	90.00	359.41	9,830.0	1,648.3	1,233.9	375,107.96	875,802.44	32.0266592	-103.2540884
12,100.0	90.00	359.41	9,830.0	1,748.3	1,232.9	375,207.95	875,801.41	32.0269341	-103.2540885
12,200.0	90.00	359.41	9,830.0	1,848.3	1,231.9	375,307.95	875,800.38	32.0272090	-103.2540886
12,300.0	90.00	359.41	9,830.0	1,948.3	1,230.8	375,407.94	875,799.35	32.0274838	-103.2540887
12,400.0	90.00	359.41	9,830.0	2,048.3	1,229.8	375,507.94	875,798.32	32.0277587	-103.2540888
12,500.0	90.00	359.41	9,830.0	2,148.3	1,228.8	375,607.93	875,797.30	32.0280336	-103.2540889
12,600.0	90.00	359.41	9,830.0	2,248.3	1,227.7	375,707.93	875,796.27	32.0283084	-103.2540890
12,700.0	90.00	359.41	9,830.0	2,348.2	1,226.7	375,807.92	875,795.24	32.0285833	-103.2540890
12,800.0	90.00	359.41	9,830.0	2,448.2	1,225.7	375,907.92	875,794.21	32.0288581	-103.2540891
12,900.0	90.00	359.41	9,830.0	2,548.2	1,224.7	376,007.91	875,793.18	32.0291330	-103.2540892
13,000.0	90.00	359.41	9,830.0	2,648.2	1,223.6	376,107.90	875,792.15	32.0294079	-103.2540893
13,100.0	90.00	359.41	9,830.0	2,748.2	1,222.6	376,207.90	875,791.12	32.0296827	-103.2540894
13,200.0	90.00	359.41	9,830.0	2,848.2	1,221.6	376,307.89	875,790.10	32.0299576	-103.2540895
13,300.0	90.00	359.41	9,830.0	2,948.2	1,220.5	376,407.89	875,789.07	32.0302325	-103.2540896
13,400.0	90.00	359.41	9,830.0	3,048.2	1,219.5	376,507.88	875,788.04	32.0305073	-103.2540897
13,500.0	90.00	359.41	9,830.0	3,148.2	1,218.5	376,607.88	875,787.01	32.0307822	-103.2540898
13,600.0	90.00	359.41	9,830.0	3,248.2	1,217.5	376,707.87	875,785.98	32.0310571	-103.2540899
13,700.0	90.00	359.41	9,830.0	3,348.2	1,216.4	376,807.87	875,784.95	32.0313319	-103.2540900
13,800.0	90.00	359.41	9,830.0	3,448.2	1,215.4	376,907.86	875,783.93	32.0316068	-103.2540901
13,900.0	90.00	359.41	9,830.0	3,548.2	1,214.4	377,007.86	875,782.90	32.0318816	-103.2540902
14,000.0	90.00	359.41	9,830.0	3,648.2	1,213.4	377,107.85	875,781.87	32.0321565	-103.2540903
14,100.0	90.00	359.41	9,830.0	3,748.2	1,212.3	377,207.85	875,780.84	32.0324314	-103.2540904
14,200.0	90.00	359.41	9,830.0	3,848.2	1,211.3	377,307.84	875,779.81	32.0327062	-103.2540905
14,300.0	90.00	359.41	9,830.0	3,948.2	1,210.3	377,407.84	875,778.78	32.0329811	-103.2540906
14,400.0	90.00	359.41	9,830.0	4,048.2	1,209.2	377,507.83	875,777.76	32.0332560	-103.2540907
14,500.0	90.00	359.41	9,830.0	4,148.2	1,208.2	377,607.83	875,776.73	32.0335308	-103.2540907
14,600.0	90.00	359.41	9,830.0	4,248.1	1,207.2	377,707.82	875,775.70	32.0338057	-103.2540908
14,700.0	90.00	359.41	9,830.0	4,348.1	1,206.2	377,807.81	875,774.67	32.0340806	-103.2540909
14,800.0	90.00	359.41	9,830.0	4,448.1	1,205.1	377,907.81	875,773.64	32.0343554	-103.2540910
14,900.0	90.00	359.41	9,830.0	4,548.1	1,204.1	378,007.80	875,772.61	32.0346303	-103.2540911
15,000.0	90.00	359.41	9,830.0	4,648.1	1,203.1	378,107.80	875,771.59	32.0349051	-103.2540912
15,100.0	90.00	359.41	9,830.0	4,748.1	1,202.0	378,207.79	875,770.56	32.0351800	-103.2540913
15,200.0	90.00	359.41	9,830.0	4,848.1	1,201.0	378,307.79	875,769.53	32.0354549	-103.2540914
15,300.0	90.00	359.41	9,830.0	4,948.1	1,200.0	378,407.78	875,768.50	32.0357297	-103.2540915
15,400.0	90.00	359.41	9,830.0	5,048.1	1,199.0	378,507.78	875,767.47	32.0360046	-103.2540916
15,500.0	90.00	359.41	9,830.0	5,148.1	1,197.9	378,607.77	875,766.44	32.0362795	-103.2540917
15,600.0	90.00	359.41	9,830.0	5,248.1	1,196.9	378,707.77	875,765.41	32.0365543	-103.2540918
15,700.0	90.00	359.41	9,830.0	5,348.1	1,195.9	378,807.76	875,764.39	32.0368292	-103.2540919
15,800.0	90.00	359.41	9,830.0	5,448.1	1,194.8	378,907.76	875,763.36	32.0371041	-103.2540920
15,900.0	90.00	359.41	9,830.0	5,548.1	1,193.8	379,007.75	875,762.33	32.0373789	-103.2540921
16,000.0	90.00	359.41	9,830.0	5,648.1	1,192.8	379,107.75	875,761.30	32.0376538	-103.2540922
16,100.0	90.00	359.41	9,830.0	5,748.1	1,191.8	379,207.74	875,760.27	32.0379286	-103.2540923
16,200.0	90.00	359.41	9,830.0	5,848.1	1,190.7	379,307.74	875,759.24	32.0382035	-103.2540923



Planning Report - Geographic

Database:	AUS-COMPASS - EDM_15 - 32bit	Local Co-ordinate Reference:	Well MAGNOLIA ST COM 26 36 22 #182H
Company:	Ameredev Operating	TVD Reference:	Mean Sea Level (System)
Project:	Lea County, NM (N83-NME)	MD Reference:	Mean Sea Level (System)
Site:	MAGNOLIA ST COM PROJECT	North Reference:	Grid
Well:	MAGNOLIA ST COM 26 36 22 #182H	Survey Calculation Method:	Minimum Curvature
Wellbore:	OWB		
Design:	PWP		

Planned Survey										
Measured Depth (usft)	Inclination (°)	Azimuth (°)	Vertical Depth (usft)	+N/-S (usft)	+E/-W (usft)	Map Northing (usft)	Map Easting (usft)	Latitude	Longitude	
16,300.0	90.00	359.41	9,830.0	5,948.1	1,189.7	379,407.73	875,758.22	32.0384784	-103.2540924	
16,400.0	90.00	359.41	9,830.0	6,048.1	1,188.7	379,507.72	875,757.19	32.0387532	-103.2540925	
16,500.0	90.00	359.41	9,830.0	6,148.0	1,187.6	379,607.72	875,756.16	32.0390281	-103.2540926	
16,600.0	90.00	359.41	9,830.0	6,248.0	1,186.6	379,707.71	875,755.13	32.0393030	-103.2540927	
16,700.0	90.00	359.41	9,830.0	6,348.0	1,185.6	379,807.71	875,754.10	32.0395778	-103.2540928	
16,800.0	90.00	359.41	9,830.0	6,448.0	1,184.6	379,907.70	875,753.07	32.0398527	-103.2540929	
16,900.0	90.00	359.41	9,830.0	6,548.0	1,183.5	380,007.70	875,752.05	32.0401276	-103.2540930	
17,000.0	90.00	359.41	9,830.0	6,648.0	1,182.5	380,107.69	875,751.02	32.0404024	-103.2540931	
17,100.0	90.00	359.41	9,830.0	6,748.0	1,181.5	380,207.69	875,749.99	32.0406773	-103.2540932	
17,200.0	90.00	359.41	9,830.0	6,848.0	1,180.4	380,307.68	875,748.96	32.0409521	-103.2540933	
17,300.0	90.00	359.41	9,830.0	6,948.0	1,179.4	380,407.68	875,747.93	32.0412270	-103.2540934	
17,400.0	90.00	359.41	9,830.0	7,048.0	1,178.4	380,507.67	875,746.90	32.0415019	-103.2540935	
17,500.0	90.00	359.41	9,830.0	7,148.0	1,177.4	380,607.67	875,745.88	32.0417767	-103.2540936	
17,600.0	90.00	359.41	9,830.0	7,248.0	1,176.3	380,707.66	875,744.85	32.0420516	-103.2540937	
17,700.0	90.00	359.41	9,830.0	7,348.0	1,175.3	380,807.66	875,743.82	32.0423265	-103.2540938	
17,800.0	90.00	359.41	9,830.0	7,448.0	1,174.3	380,907.65	875,742.79	32.0426013	-103.2540938	
17,900.0	90.00	359.41	9,830.0	7,548.0	1,173.2	381,007.65	875,741.76	32.0428762	-103.2540939	
18,000.0	90.00	359.41	9,830.0	7,648.0	1,172.2	381,107.64	875,740.73	32.0431511	-103.2540940	
18,100.0	90.00	359.41	9,830.0	7,748.0	1,171.2	381,207.64	875,739.70	32.0434259	-103.2540941	
18,200.0	90.00	359.41	9,830.0	7,848.0	1,170.2	381,307.63	875,738.68	32.0437008	-103.2540942	
18,300.0	90.00	359.41	9,830.0	7,948.0	1,169.1	381,407.62	875,737.65	32.0439756	-103.2540943	
18,400.0	90.00	359.41	9,830.0	8,047.9	1,168.1	381,507.62	875,736.62	32.0442505	-103.2540944	
18,500.0	90.00	359.41	9,830.0	8,147.9	1,167.1	381,607.61	875,735.59	32.0445254	-103.2540945	
18,600.0	90.00	359.41	9,830.0	8,247.9	1,166.0	381,707.61	875,734.56	32.0448002	-103.2540946	
18,700.0	90.00	359.41	9,830.0	8,347.9	1,165.0	381,807.60	875,733.53	32.0450751	-103.2540947	
18,800.0	90.00	359.41	9,830.0	8,447.9	1,164.0	381,907.60	875,732.51	32.0453500	-103.2540948	
18,900.0	90.00	359.41	9,830.0	8,547.9	1,163.0	382,007.59	875,731.48	32.0456248	-103.2540949	
19,000.0	90.00	359.41	9,830.0	8,647.9	1,161.9	382,107.59	875,730.45	32.0458997	-103.2540950	
19,100.0	90.00	359.41	9,830.0	8,747.9	1,160.9	382,207.58	875,729.42	32.0461746	-103.2540951	
19,200.0	90.00	359.41	9,830.0	8,847.9	1,159.9	382,307.58	875,728.39	32.0464494	-103.2540952	
19,300.0	90.00	359.41	9,830.0	8,947.9	1,158.8	382,407.57	875,727.36	32.0467243	-103.2540952	
19,400.0	90.00	359.41	9,830.0	9,047.9	1,157.8	382,507.57	875,726.34	32.0469991	-103.2540953	
19,500.0	90.00	359.41	9,830.0	9,147.9	1,156.8	382,607.56	875,725.31	32.0472740	-103.2540954	
19,600.0	90.00	359.41	9,830.0	9,247.9	1,155.8	382,707.56	875,724.28	32.0475489	-103.2540955	
19,700.0	90.00	359.41	9,830.0	9,347.9	1,154.7	382,807.55	875,723.25	32.0478237	-103.2540956	
19,800.0	90.00	359.41	9,830.0	9,447.9	1,153.7	382,907.55	875,722.22	32.0480986	-103.2540957	
19,900.0	90.00	359.41	9,830.0	9,547.9	1,152.7	383,007.54	875,721.19	32.0483735	-103.2540958	
20,000.0	90.00	359.41	9,830.0	9,647.9	1,151.6	383,107.53	875,720.17	32.0486483	-103.2540959	
20,100.0	90.00	359.41	9,830.0	9,747.9	1,150.6	383,207.53	875,719.14	32.0489232	-103.2540960	
20,200.0	90.00	359.41	9,830.0	9,847.9	1,149.6	383,307.52	875,718.11	32.0491980	-103.2540961	
20,300.0	90.00	359.41	9,830.0	9,947.8	1,148.6	383,407.52	875,717.08	32.0494729	-103.2540962	
20,400.0	90.00	359.41	9,830.0	10,047.8	1,147.5	383,507.51	875,716.05	32.0497478	-103.2540963	
20,500.0	90.00	359.41	9,830.0	10,147.8	1,146.5	383,607.51	875,715.02	32.0500226	-103.2540964	
20,600.0	90.00	359.41	9,830.0	10,247.8	1,145.5	383,707.50	875,713.99	32.0502975	-103.2540965	
20,640.4	90.00	359.41	9,830.0	10,288.2	1,145.1	383,747.86	875,713.58	32.0504084	-103.2540965	
TD at 20640.4										



Planning Report - Geographic

Database:	AUS-COMPASS - EDM_15 - 32bit	Local Co-ordinate Reference:	Well MAGNOLIA ST COM 26 36 22 #182H
Company:	Ameredev Operating	TVD Reference:	Mean Sea Level (System)
Project:	Lea County, NM (N83-NME)	MD Reference:	Mean Sea Level (System)
Site:	MAGNOLIA ST COM PROJECT	North Reference:	Grid
Well:	MAGNOLIA ST COM 26 36 22 #182H	Survey Calculation Method:	Minimum Curvature
Wellbore:	OWB		
Design:	PWP		

Design Targets									
Target Name									
- hit/miss target	Dip Angle	Dip Dir.	TVD	+N/-S	+E/-W	Northing	Easting	Latitude	Longitude
- Shape	(°)	(°)	(usft)	(usft)	(usft)	(usft)	(usft)		
LTP (MSC #182H)	0.00	0.00	9,830.0	10,238.2	1,145.6	383,697.87	875,714.08	32.0502710	-103.2540965
- plan hits target center									
- Point									
FTP (MSC #182H)	0.00	0.00	9,830.0	-118.9	1,251.4	373,340.77	875,819.93	32.0218016	-103.2540889
- plan misses target center by 0.7usft at 10232.7usft MD (9830.0 TVD, -118.9 N, 1252.1 E)									
- Point									
BHL (MSC #182H)	0.00	0.00	9,830.0	10,288.2	1,145.1	383,747.86	875,713.58	32.0504084	-103.2540965
- plan hits target center									
- Point									

Formations						
Measured Depth (usft)	Vertical Depth (usft)	Name	Lithology	Dip (°)	Dip Direction (°)	
0.0	0.0	Dewey Lake				
1,701.1	1,695.0	Rustler				
2,171.8	2,157.0	Salado				
3,164.0	3,131.0	Tansill				
3,846.6	3,801.0	Capitan				
4,962.1	4,896.0	Lamar				
5,165.8	5,096.0	Bell Canyon				
6,791.7	6,692.0	Brushy Canyon				
7,742.1	7,625.0	Bone Spring Lime				
9,446.6	9,316.0	First Bone Spring				
10,101.7	9,812.0	Second Bone Spring				

Plan Annotations				
Measured Depth (usft)	Vertical Depth (usft)	Local Coordinates		Comment
		+N/-S (usft)	+E/-W (usft)	
1,000.0	1,000.0	0.0	0.0	Start Build 2.00
1,550.0	1,546.6	-22.5	47.6	Start 6739.0 hold at 1550.0 MD
8,289.0	8,161.9	-573.5	1,209.4	Start Drop -2.00
8,839.0	8,708.5	-596.0	1,257.0	Start 644.0 hold at 8839.0 MD
9,483.1	9,352.5	-596.0	1,257.0	KOP-Start DLS 12.00 TFO 359.41
10,233.1	9,830.0	-118.6	1,252.1	LP-Start 10407.3 hold at 10233.1 MD
20,640.4	9,830.0	10,288.2	1,145.1	TD at 20640.4

State of New Mexico
Energy, Minerals and Natural Resources Department

Submit Electronically
Via E-permitting

Oil Conservation Division
1220 South St. Francis Dr.
Santa Fe, NM 87505

NATURAL GAS MANAGEMENT PLAN

This Natural Gas Management Plan must be submitted with each Application for Permit to Drill (APD) for a new or recompleted well.

Section 1 – Plan Description

Effective May 25, 2021

I. Operator: _____ Ameredev II, LLC _____ **OGRID:** _____ 372224 _____ **Date:** _____ 06/21/2023 _____

II. Type: ☒ Original ☐ Amendment due to ☐ 19.15.27.9.D(6)(a) NMAC ☐ 19.15.27.9.D(6)(b) NMAC ☐ Other.

If Other, please describe: _____

III. Well(s): Provide the following information for each new or recompleted well or set of wells proposed to be drilled or proposed to be recompleted from a single well pad or connected to a central delivery point.

Well Name	API	ULSTR	Footages	Anticipated Oil BBL/D	Anticipated Gas MCF/D	Anticipated Produced Water BBL/D
Magnolia 26 36 22 State Com 073H	30025-		230' FSL & 1015' FEL	1,000	5,018	3,838
Magnolia 26 36 22 State Com 074H	30025-		200' FNL & 310' FEL	115	576	203
Magnolia 26 36 22 State Com 181H	30025-		230' FSL & 1060' FWL	115	576	203
Magnolia 26 36 22 State Com 182H	30025-		650' FSL & 1808' FWL	115	576	203
Magnolia 26 36 22 State Com 183H	30025-		230' FSL & 1035' FEL	115	576	203
Magnolia 26 36 22 State Com 184H	30025-		200' FNL & 290' FEL	115	576	203

IV. Central Delivery Point Name: _____ [See 19.15.27.9(D)(1) NMAC]

V. Anticipated Schedule: Provide the following information for each new or recompleted well or set of wells proposed to be drilled or proposed to be recompleted from a single well pad or connected to a central delivery point.

Well Name	API	Spud Date	TD Reached Date	Completion Commencement Date	Initial Flow Back Date	First Production Date
Magnolia 26 36 22 State Com 073H	30025-	10/01/2024	11/15/2024	12/15/2024	01/01/2025	01/04/2025
Magnolia 26 36 22 State Com 074H	30025-	10/01/2024	11/15/2024	12/15/2024	01/01/2025	01/04/2025
Magnolia 26 36 22 State Com 181H	30025-	10/01/2024	11/15/2024	12/15/2024	01/01/2025	01/04/2025
Magnolia 26 36 22 State Com 182H	30025-	10/01/2024	11/15/2024	12/15/2024	01/01/2025	01/04/2025
Magnolia 26 36 22 State Com 183H	30025-	10/01/2024	11/15/2024	12/15/2024	01/01/2025	01/04/2025
Magnolia 26 36 22 State Com 184H	30025-	10/01/2024	11/15/2024	12/15/2024	01/01/2025	01/04/2025

VI. Separation Equipment: ☒ Attach a complete description of how Operator will size separation equipment to optimize gas capture.

VII. Operational Practices: ☒ Attach a complete description of the actions Operator will take to comply with the requirements of Subsection A through F of 19.15.27.8 NMAC.

VIII. Best Management Practices: ☒ Attach a complete description of Operator's best management practices to minimize venting during active and planned maintenance.

Section 2 – Enhanced Plan

EFFECTIVE APRIL 1, 2022

Beginning April 1, 2022, an operator that is not in compliance with its statewide natural gas capture requirement for the applicable reporting area must complete this section.

☒ Operator certifies that it is not required to complete this section because Operator is in compliance with its statewide natural gas capture requirement for the applicable reporting area.

IX. Anticipated Natural Gas Production:

Well	API	Anticipated Average Natural Gas Rate MCF/D	Anticipated Volume of Natural Gas for the First Year MCF

X. Natural Gas Gathering System (NGGS):

Operator	System	ULSTR of Tie-in	Anticipated Gathering Start Date	Available Maximum Daily Capacity of System Segment Tie-in

XI. Map. ☐ Attach an accurate and legible map depicting the location of the well(s), the anticipated pipeline route(s) connecting the production operations to the existing or planned interconnect of the natural gas gathering system(s), and the maximum daily capacity of the segment or portion of the natural gas gathering system(s) to which the well(s) will be connected.

XII. Line Capacity. The natural gas gathering system ☐ will ☐ will not have capacity to gather 100% of the anticipated natural gas production volume from the well prior to the date of first production.

XIII. Line Pressure. Operator ☐ does ☐ does not anticipate that its existing well(s) connected to the same segment, or portion, of the natural gas gathering system(s) described above will continue to meet anticipated increases in line pressure caused by the new well(s).

☐ Attach Operator's plan to manage production in response to the increased line pressure.

XIV. Confidentiality: ☐ Operator asserts confidentiality pursuant to Section 71-2-8 NMSA 1978 for the information provided in Section 2 as provided in Paragraph (2) of Subsection D of 19.15.27.9 NMAC, and attaches a full description of the specific information for which confidentiality is asserted and the basis for such assertion.

Section 3 - Certifications

Effective May 25, 2021

Operator certifies that, after reasonable inquiry and based on the available information at the time of submittal:

☒ Operator will be able to connect the well(s) to a natural gas gathering system in the general area with sufficient capacity to transport one hundred percent of the anticipated volume of natural gas produced from the well(s) commencing on the date of first production, taking into account the current and anticipated volumes of produced natural gas from other wells connected to the pipeline gathering system; or

☐ Operator will not be able to connect to a natural gas gathering system in the general area with sufficient capacity to transport one hundred percent of the anticipated volume of natural gas produced from the well(s) commencing on the date of first production, taking into account the current and anticipated volumes of produced natural gas from other wells connected to the pipeline gathering system.

If Operator checks this box, Operator will select one of the following:

Well Shut-In. ☐ Operator will shut-in and not produce the well until it submits the certification required by Paragraph (4) of Subsection D of 19.15.27.9 NMAC; or

Venting and Flaring Plan. ☐ Operator has attached a venting and flaring plan that evaluates and selects one or more of the potential alternative beneficial uses for the natural gas until a natural gas gathering system is available, including:

- (a) power generation on lease;
- (b) power generation for grid;
- (c) compression on lease;
- (d) liquids removal on lease;
- (e) reinjection for underground storage;
- (f) reinjection for temporary storage;
- (g) reinjection for enhanced oil recovery;
- (h) fuel cell production; and
- (i) other alternative beneficial uses approved by the division.

Section 4 - Notices

1. If, at any time after Operator submits this Natural Gas Management Plan and before the well is spud:

(a) Operator becomes aware that the natural gas gathering system it planned to connect the well(s) to has become unavailable or will not have capacity to transport one hundred percent of the production from the well(s), no later than 20 days after becoming aware of such information, Operator shall submit for OCD's approval a new or revised venting and flaring plan containing the information specified in Paragraph (5) of Subsection D of 19.15.27.9 NMAC; or

(b) Operator becomes aware that it has, cumulatively for the year, become out of compliance with its baseline natural gas capture rate or natural gas capture requirement, no later than 20 days after becoming aware of such information, Operator shall submit for OCD's approval a new or revised Natural Gas Management Plan for each well it plans to spud during the next 90 days containing the information specified in Paragraph (2) of Subsection D of 19.15.27.9 NMAC, and shall file an update for each Natural Gas Management Plan until Operator is back in compliance with its baseline natural gas capture rate or natural gas capture requirement.

2. OCD may deny or conditionally approve an APD if Operator does not make a certification, fails to submit an adequate venting and flaring plan which includes alternative beneficial uses for the anticipated volume of natural gas produced, or if OCD determines that Operator will not have adequate natural gas takeaway capacity at the time a well will be spud.

I certify that, after reasonable inquiry, the statements in and attached to this Natural Gas Management Plan are true and correct to the best of my knowledge and acknowledge that a false statement may be subject to civil and criminal penalties under the Oil and Gas Act.

Signature: <i>Cesca Yu</i>
Printed Name: Cesca Yu
Title: Engineer
E-mail Address: cyu@ameredev.com
Date: 06/21/2023
Phone: 512-775-1417

OIL CONSERVATION DIVISION
(Only applicable when submitted as a standalone form)

Approved By:
Title:
Approval Date:
Conditions of Approval:

Natural Gas Management Plan

VI. Separation Equipment: Attach a complete description of how Operator will size separation equipment to optimize gas capture.

- Separation equipment is sized to allow for retention time and velocity to adequately separate oil, gas, and water at anticipated peak rates.
- All central tank battery equipment is designed to efficiently capture the remaining gas from the liquid phase.
- Valves and meters are designed to service without flow interruption or venting of gas.

VII. Operational Practices: Attach a complete description of the actions Operator will take to comply with the requirements of Subsection A through F 19.15.27.8 NMAC.

19.15.27.8 (A)

Ameredev's field operations are designed with the goal of minimizing flaring and preventing venting of natural gas. If capturing the gas is not possible then the gas is combusted/flared using properly sized flares or combustors in accordance with state air permit rules.

19.15.27.8 (B) Venting and Flaring during drilling operations

- A properly-sized flare stack will be located at a minimum 100' from the nearest surface hole location on the pad.
- All natural gas produced during drilling operations will be flared. Venting will only occur if there is an equipment malfunction and/or to avoid risk of an immediate and substantial adverse impact on safety, public health, or the environment.

19.15.27.8 (C) Venting and Flaring during completions or recompletions operations.

- During all phases of flowback, wells will flow through a sand separator, or other appropriate flowback separation equipment, and the well stream will be directed to a central tank battery (CTB) through properly sized flowlines
- The CTB will have properly sized separation equipment for maximum anticipated flowrates
- Multiple stages of separation will be used to separate gas from liquids. All gas will be routed to a sales outlet. Fluids will be routed to tanks equipped with a closed loop system that will recover any residual gas from the tanks and route such gas to a sales outlet.

19.15.27.8 (D) Venting and Flaring during production operations.

- During production, the well stream will be routed to the CTB where multiple stages of separation will separate gas from liquids. All gas will be routed to a sales outlet. Fluids will be routed to tanks with a closed

loop system that will recover any residual gas from the tanks and route such gas to a sales outlet, minimizing tank emissions.

- Flares are equipped with auto-ignition systems and continuous pilot operations.
- Automatic gauging equipment is installed on all tanks.

19.15.27.8 (E) Performance Standards

- Production equipment will be designed to handle maximum anticipated rates and pressure.
- Automatic gauging equipment is installed on all tanks to minimize venting
- All flared gas will be combusted in a flare stack that is properly sized and designed to ensure proper combustion.
- Flares are equipped with continuous pilots and auto-ignitors along with remote monitoring of the pilot status
- Weekly AVOs and monthly LDAR inspections will be performed on all wells and facilities that produce more than 60 Mcfd.
- Gas/H₂S detectors will be installed throughout the facilities and wellheads to detect leaks and enable timely repairs.

19.15.27.8 (F) Measurement or estimation of vented and flared natural gas

- All high pressure flared gas is measured by equipment conforming to API 14.10.
- No meter bypasses are installed.
- When metering is not practical due to low pressure/low rate, the vented or flared volume will be estimated through flare flow curves with the assistance of air emissions consultants, as necessary.

VIII. Best Management Practices: Attach a complete description of Operator's best management practices to minimize venting during active and planned maintenance.

- Ameredev will use best management practices to vent as minimally as possible during well intervention operations and downhole well maintenance
- All natural gas is routed into the gas gathering system and directed to one of Ameredev's multiple gas sales outlets.
- All venting events will be recorded and all start-up, shutdown, maintenance logs will be kept for control equipment
- All control equipment will be maintained to provide highest run-time possible
- All procedures are drafted to keep venting and flaring to the absolute minimum