

Submit 4 Copy To Appropriate District Office  
 District I - (575) 393-6161  
 1625 N. French Dr., Hobbs, NM 88240  
 District II - (575) 748-1283  
 811 S. First St., Artesia, NM 88210  
 District III - (505) 334-6178  
 1000 Rio Brazos Rd., Aztec, NM 87410  
 District IV - (505) 476-3460  
 1220 S. St. Francis Dr., Santa Fe, NM 87505

State of New Mexico  
 Energy, Minerals and Natural Resources

Form C-103  
 Revised July 18, 2013

OIL CONSERVATION DIVISION  
 1220 South St. Francis Dr.  
 Santa Fe, NM 87505

WELL API NO.

30-025-06728

5. Indicate Type of Lease

STATE ☐ FEE ☒

6. State Oil & Gas Lease No.

7. Lease Name or Unit Agreement Name

NORTHEAST DRINKARD UT.  
(NEDU)

8. Well Number 808

9. OGRID Number 873

10. Pool name or Wildcat

EUNICE: B-T-D, NORTH (22900)

SUNDRY NOTICES AND REPORTS ON WELLS

(DO NOT USE THIS FORM FOR PROPOSALS TO DRILL OR TO DEEPEN OR PLUG BACK TO A DIFFERENT RESERVOIR. USE "APPLICATION FOR PERMIT" (FORM C-101) FOR SUCH PROPOSALS.)

1. Type of Well: Oil Well ☐ Gas Well ☒ Other

2. Name of Operator

APACHE CORPORATION

3. Address of Operator

303 VETERANS AIRPARK LANE, STE. 3000, MIDLAND TX 79705

4. Well Location

Unit Letter A : 660 feet from the N line and 660 feet from the E line

Section 22 Township 21S Range 37E NMPM County LEA

11. Elevation (Show whether DR, RKB, RT, GR, etc.)

3412' GL

12. Check Appropriate Box to Indicate Nature of Notice, Report or Other Data

NOTICE OF INTENTION TO:

PERFORM REMEDIAL WORK ☐ PLUG AND ABANDON ☐

TEMPORARILY ABANDON ☐ CHANGE PLANS ☐

PULL OR ALTER CASING ☐ MULTIPLE COMPL ☐

DOWNHOLE COMMINGLE ☐

CLOSED-LOOP SYSTEM ☐

OTHER: ☐

SUBSEQUENT REPORT OF:

REMEDIAL WORK ☐ ALTERING CASING ☐

COMMENCE DRILLING OPNS. ☐ P AND A ☒

CASING/CEMENT JOB ☐ PNR

OTHER: ☐

13. Describe proposed or completed operations. (Clearly state all pertinent details, and give pertinent dates, including estimated date of starting any proposed work). SEE RULE 19.15.7.14 NMAC. For Multiple Completions: Attach wellbore diagram of proposed completion or recompletion.

8/7/23 - NOTIFIED NMOCD. MIRU.

8/8/23 - CIRCULATED MLF. SPOTTED 35 SX OF CLASS "C" CEMENT FROM 5557' - 5349'. CIRCULATED MLF. SPOTTED 35 SX OF CLASS "C" CEMENT FROM 4046' - 3838'.

8/9/23 - PERFD @ 2850'. CIRCULATED MLF. SPOTTED 95 SX OF CLASS "C" CEMENT FROM 2913' - 2348'.

8/10/23 - TAGGED @ 2312'. Perf @ 1290'. CIRCULATED MLF. SQUEEZED 140 SX CLASS "C" CEMENT FROM 1290' - 1090'.

TAGGED @ 1028'. PERFD @ 341'. CIRCULATED MLF. SQUEEZED 266 SX OF CLASS "C" CEMENT FROM 341' - SURFACE. VERIFIED CEMENT AT SURFACE.

8/21/23 - CUTOFF WELLHEAD AND INSTALLED PLATE.

Spud Date:

Rig Release Date:

I hereby certify that the information above is true and complete to the best of my knowledge and belief.

SIGNATURE Kelton L. Woodard TITLE Plugging Agent DATE 8/23/23

Type or print name KELTON L. WOODARD E-mail address: kelton@jmrsvcs.com PHONE: (432)618-1050  
 For State Use Only

APPROVED BY: Kerry Fortner TITLE Compliance Officer A DATE 8/25/23

Conditions of Approval (if any):

Authorized by Carrie Kirkland - Apache P&A Tech 8/24/23

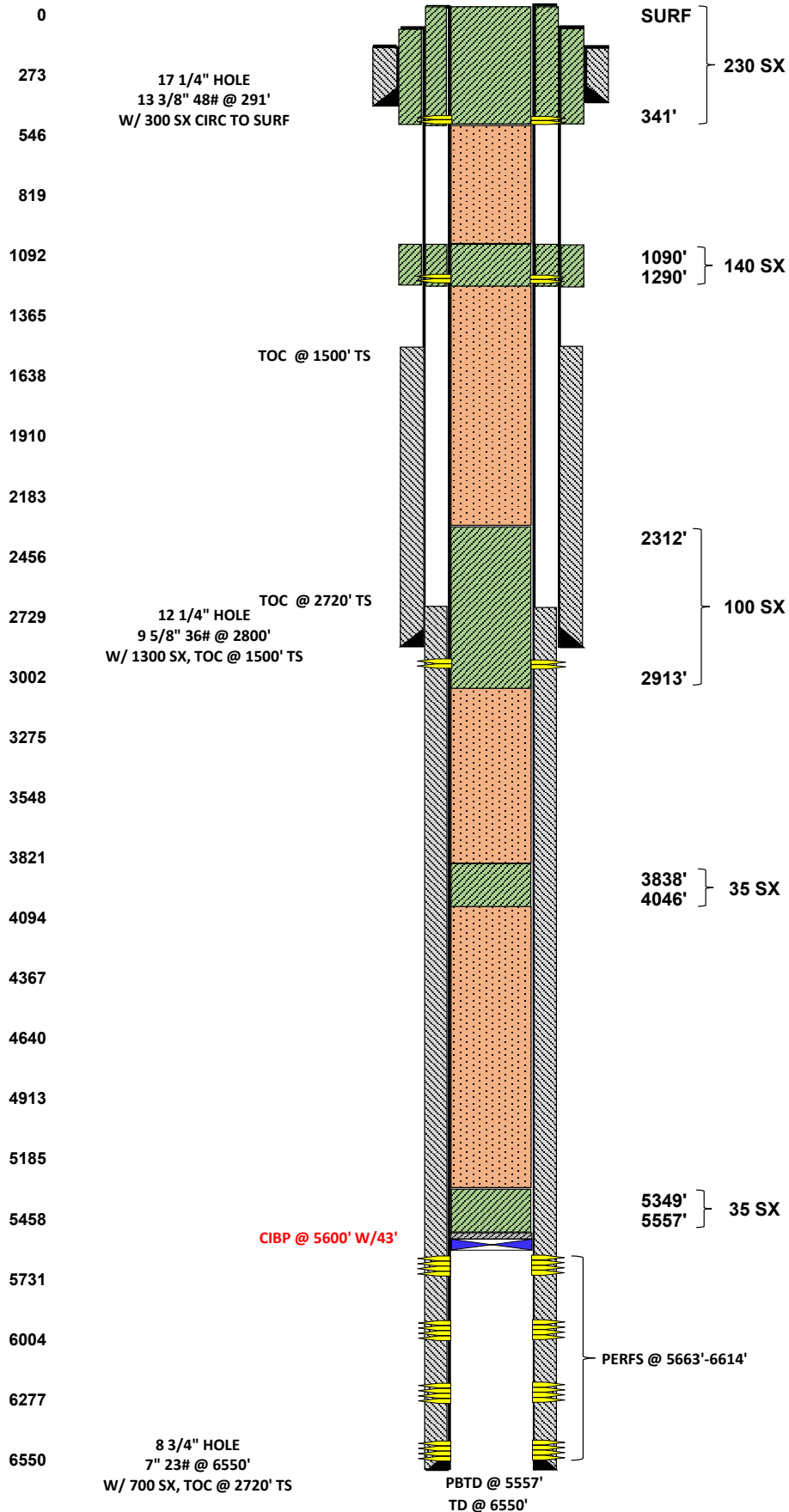


## WELL BORE INFO.

LEASE NAME	NEDU
WELL #	808W
API #	30-025-06728
COUNTY	LEA, NM

DEPTH SX/CMT

## FINAL P&amp;A WB DIAGRAM



SURF

## PLUG #5

8-10-23 PUH & PERF'D @ 341', EPIR/CIRC TO SURF, SQZ'D 266 SX CLASS "C" CMT FROM 341' TO SURF. VERIFIED CMT AT SURF. RDMO, CUT OFF WH, ANCHORS, INSTALL DRY HOLE MARKER, PERFORM RECLAMATION AT LATER DATE. PA COMPLETE.

230 SX

341'

1090'

1290' 140 SX

## PLUG #4

8-10-23 PUH & PERF'D @ 1290', EPIR & SQZ'D 140 SX CLASS "C" CMT FROM 1290'-1090', WOC/TAGGED @ 1028'.

2312'

100 SX

2913'

## PLUG #3

8-8-23 PUH, CHANGED PACKER, SET.  
8-9-23 PERF'D @ 2850', NO PIR, KERRY FORTNER APPROVED TO SPOT 100 SX CLASS "C" CMT FROM 2913'-2348', WOC/TAGGED @ 2312'.

3838'

4046' 35 SX

## PLUG #2

8-8-23 PUH & SPOTTED 35 SX CLASS "C" CMT FROM 4046'-3838'.

5349'

5557' 35 SX

## PLUG #1

8-7-23 MIRU P&A UNIT, RIH W/28 JTS TBG.  
8-8-23 CONT. IN W/ TBG, VERIFIED CIBP @ 5557', CIRC W/MLF & SPOTTED 35 SX CLASS "C" CMT FROM 5557'-5349'.

**District I**  
1625 N. French Dr., Hobbs, NM 88240  
Phone:(575) 393-6161 Fax:(575) 393-0720  
**District II**  
811 S. First St., Artesia, NM 88210  
Phone:(575) 748-1283 Fax:(575) 748-9720  
**District III**  
1000 Rio Brazos Rd., Aztec, NM 87410  
Phone:(505) 334-6178 Fax:(505) 334-6170  
**District IV**  
1220 S. St Francis Dr., Santa Fe, NM 87505  
Phone:(505) 476-3470 Fax:(505) 476-3462

State of New Mexico  
Energy, Minerals and Natural Resources  
Oil Conservation Division  
1220 S. St Francis Dr.  
Santa Fe, NM 87505

COMMENTS

Action 257081

COMMENTS

Operator: APACHE CORPORATION 303 Veterans Airpark Ln Midland, TX 79705	OGRID: 873
	Action Number: 257081
	Action Type: [C-103] Sub. Plugging (C-103P)

COMMENTS

Created By	Comment	Comment Date
plmartinez	DATA ENTRY PM	8/28/2023

**District I**  
1625 N. French Dr., Hobbs, NM 88240  
Phone:(575) 393-6161 Fax:(575) 393-0720  
**District II**  
811 S. First St., Artesia, NM 88210  
Phone:(575) 748-1283 Fax:(575) 748-9720  
**District III**  
1000 Rio Brazos Rd., Aztec, NM 87410  
Phone:(505) 334-6178 Fax:(505) 334-6170  
**District IV**  
1220 S. St Francis Dr., Santa Fe, NM 87505  
Phone:(505) 476-3470 Fax:(505) 476-3462

State of New Mexico  
Energy, Minerals and Natural Resources  
Oil Conservation Division  
1220 S. St Francis Dr.  
Santa Fe, NM 87505

CONDITIONS

Action 257081

CONDITIONS

Operator: APACHE CORPORATION 303 Veterans Airpark Ln Midland, TX 79705	OGRID: 873
	Action Number: 257081
	Action Type: [C-103] Sub. Plugging (C-103P)

CONDITIONS

Created By	Condition	Condition Date
kfortner	Need C103Q and marker photo to release	8/25/2023