

District I1625 N. French Dr., Hobbs, NM 88240
Phone:(575) 393-6161 Fax:(575) 393-0720**District II**811 S. First St., Artesia, NM 88210
Phone:(575) 748-1283 Fax:(575) 748-9720**District III**1000 Rio Brazos Rd., Aztec, NM 87410
Phone:(505) 334-6178 Fax:(505) 334-6170**District IV**1220 S. St Francis Dr., Santa Fe, NM 87505
Phone:(505) 476-3470 Fax:(505) 476-3462

State of New Mexico

Energy, Minerals and Natural Resources

Oil Conservation Division

1220 S. St Francis Dr.

Santa Fe, NM 87505

Form C-101

August 1, 2011

Permit 349226

APPLICATION FOR PERMIT TO DRILL, RE-ENTER, DEEPEN, PLUGBACK, OR ADD A ZONE

1. Operator Name and Address Silverback Operating II, LLC 19707 IH10 West, Suite 201 San Antonio, TX 78256		2. OGRID Number 330968
		3. API Number 30-015-26977
4. Property Code 332001	5. Property Name ROY AET	6. Well No. 004

7. Surface Location

UL - Lot O	Section 8	Township 19S	Range 25E	Lot Idn	Feet From 665	N/S Line S	Feet From 1967	E/W Line E	County Eddy
---------------	--------------	-----------------	--------------	---------	------------------	---------------	-------------------	---------------	----------------

8. Proposed Bottom Hole Location

UL - Lot O	Section 8	Township 19S	Range 25E	Lot Idn O	Feet From 665	N/S Line S	Feet From 1967	E/W Line E	County Eddy
---------------	--------------	-----------------	--------------	--------------	------------------	---------------	-------------------	---------------	----------------

9. Pool Information

WILDCAT;ABO	97019
-------------	-------

Additional Well Information

11. Work Type New Well	12. Well Type OIL	13. Cable/Rotary	14. Lease Type Private	15. Ground Level Elevation 3542
16. Multiple N	17. Proposed Depth 8134	18. Formation Abo Formation	19. Contractor	20. Spud Date 10/10/2023
Depth to Ground water		Distance from nearest fresh water well		Distance to nearest surface water

☒ We will be using a closed-loop system in lieu of lined pits**21. Proposed Casing and Cement Program**

Type	Hole Size	Casing Size	Casing Weight/ft	Setting Depth	Sacks of Cement	Estimated TOC
Surf	14.75	9.625	36	1075	1000	0
Prod	8.75	7	23	8134	1600	0

Casing/Cement Program: Additional Comments

DV TOOL @ 5342 TUBING -2.875, J-55, 6.5# TOP 0-BASE-5000

22. Proposed Blowout Prevention Program

Type	Working Pressure	Test Pressure	Manufacturer
Double Ram	5000	5000	Vista

23. I hereby certify that the information given above is true and complete to the best of my knowledge and belief. I further certify I have complied with 19.15.14.9 (A) NMAC <input checked="" type="checkbox"/> and/or 19.15.14.9 (B) NMAC <input checked="" type="checkbox"/> , if applicable.		OIL CONSERVATION DIVISION	
Signature:			
Printed Name:		Approved By:	
Title:		Title:	
Email Address:		Approved Date:	Expiration Date:
Date:	Phone:	Conditions of Approval Attached	

District I

1625 N. French Dr., Hobbs, NM 88240
Phone: (575) 393-6161 Fax: (575) 393-0720

District II

811 S. First St., Artesia, NM 88210
Phone: (575) 748-1283 Fax: (575) 748-9720

District III

1000 Rio Brazos Road, Aztec, NM 87410
Phone: (505) 334-6178 Fax: (505) 334-6170

District IV

1220 S. St. Francis Dr., Santa Fe, NM 87505
Phone: (505) 476-3460 Fax: (505) 476-3462

State of New Mexico
Energy, Minerals & Natural Resources Department
OIL CONSERVATION DIVISION
1220 South St. Francis Dr.
Santa Fe, NM 87505

Form C-102

Revised August 1, 2011

Submit one copy to appropriate

District Office

☐ AMENDED REPORT

WELL LOCATION AND ACREAGE DEDICATION PLAT

¹ API Number 30-015-26977	² Pool Code 97019	³ Pool Name WILDCAT; ABO
⁴ Property Code 332001	⁵ Property Name ROY "AET"	⁶ Well Number 4
⁷ OGRID No. 330968	⁸ Operator Name SILVERBACK OPERATING II, LLC	⁹ Elevation 3,542'

¹⁰ Surface Location

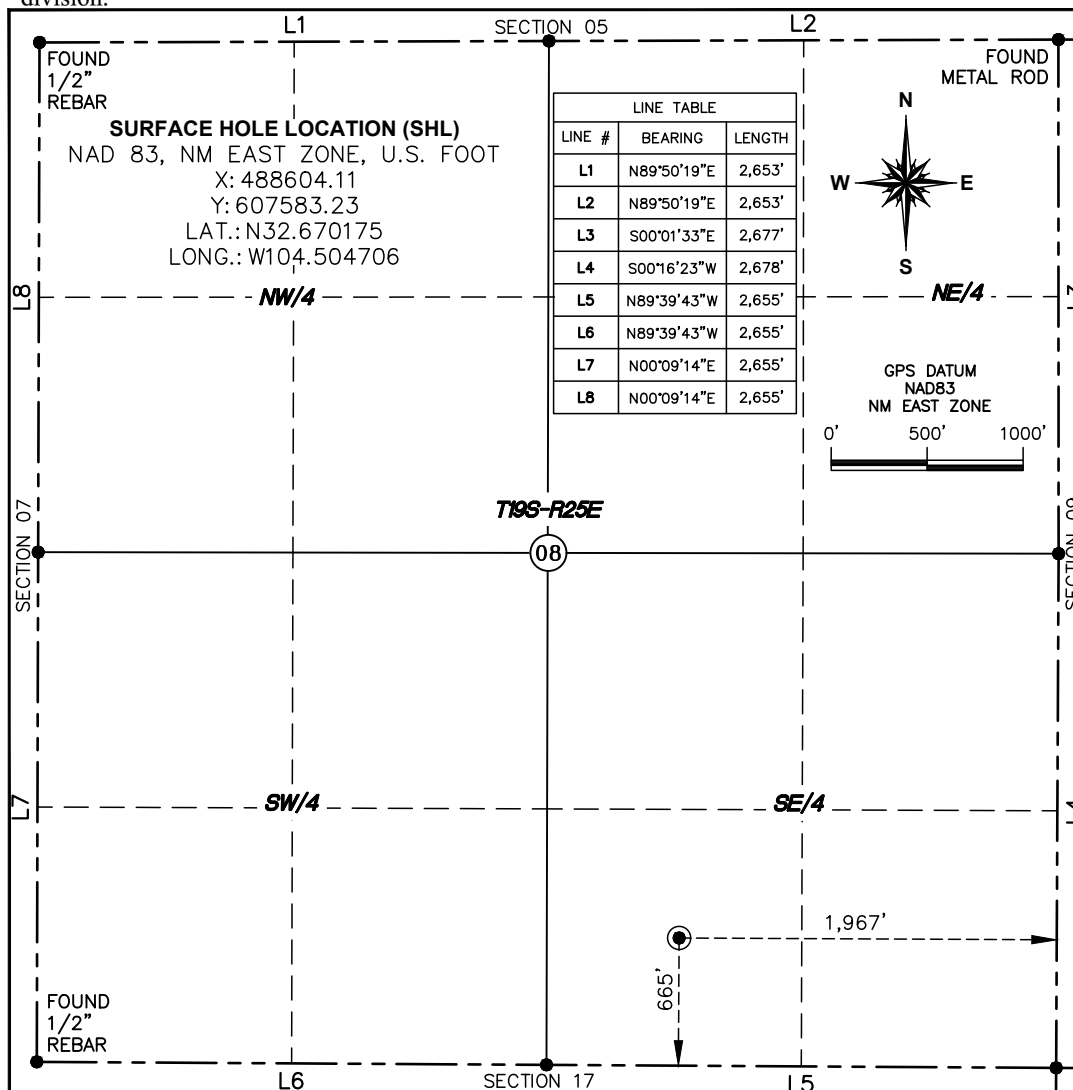
UL or lot no.	Section	Township	Range	Lot Idn	Feet from the	North/South line	Feet from the	East/West line	County
O	08	19-S	25-E		665'	SOUTH	1,967'	EAST	EDDY

¹¹ Bottom Hole Location If Different From Surface

UL or lot no.	Section	Township	Range	Lot Idn	Feet from the	North/South line	Feet from the	East/West line	County

¹² Dedicated Acres 40	¹³ Joint or Infill	¹⁴ Consolidation Code	¹⁵ Order No.
-------------------------------------	-------------------------------	----------------------------------	-------------------------

No allowable will be assigned to this completion until all interests have been consolidated or a non-standard unit has been approved by the division.

¹⁷ OPERATOR CERTIFICATION

I hereby certify that the information contained herein is true and complete to the best of my knowledge and belief, and that this organization either owns a working interest or unleased mineral interest in the land including the proposed bottom hole location or has a right to drill this well at this location pursuant to a contract with an owner of such a mineral or working interest, or to a voluntary pooling agreement or a compulsory pooling order heretofore entered by the division.

Fatma Abdallah 09/18/2023

Signature Date

Fatma Abdallah

Printed Name

fabdallah@silverbackexp.com

E-mail Address

¹⁸ SURVEYOR CERTIFICATION

I hereby certify that the well location shown on this plat was plotted from field notes of actual surveys made by me or under my supervision, and that the same is true and correct to the best of my belief.

9/13/23

Date of Survey

Signature and Seal of Professional Surveyor:

MATTHEW C. BISSETT
NEW MEXICO
20450
PROFESSIONAL SURVEYOR

Matthew C. Bissett

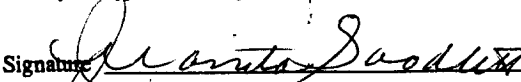
20450
Certificate Number

Submit to Appropriate
District Office -
State Lease - 6 copies
Fee Lease - 5 copies
DISTRICT I
P.O. Box 1980, Hobbs, NM 88240
DISTRICT II
P.O. Drawer DD, Artesia, NM 88210
DISTRICT III
1000 Rio Brazos Rd., Aztec, NM 87410

State of New Mexico
Energy, Minerals and Natural Resources Department
OIL CONSERVATION DIVISION
P.O. Box 2088
Santa Fe, New Mexico 87504-2088

Form C-105
Revised 1-1-89

WELL API NO. 30-015-26977
5. Indicate Type of Lease STATE <input type="checkbox"/> FEE <input checked="" type="checkbox"/>
6. State Oil & Gas Lease No.

WELL COMPLETION OR RECOMPLETION REPORT AND LOG					
1a. Type of Well: OIL WELL <input checked="" type="checkbox"/> GAS WELL <input type="checkbox"/> DRY <input type="checkbox"/> OTHER _____				7. Lease Name or Unit Agreement Name Roy AET	
b. Type of Completion: NEW WELL <input checked="" type="checkbox"/> WORK OVER <input type="checkbox"/> DEEPEN <input type="checkbox"/> PLUG BACK <input type="checkbox"/> DIFF RESVR <input type="checkbox"/> OTHER _____					
2. Name of Operator YATES PETROLEUM CORPORATION (505) 748-1471				8. Well No. 4	
3. Address of Operator 105 South 4th St., Artesia, NM 88210				9. Pool name or Wildcat North Dagger Draw U/Penn	
4. Well Location Unit Letter <u>0</u> : <u>660</u> Feet From The <u>South</u> Line and <u>1980</u> Feet From The <u>East</u> Line Section <u>8</u> Township <u>19S</u> Range <u>25E</u> NMPM Eddy County					
10. Date Spudded 5-19-92	11. Date T.D. Reached 6-4-92	12. Date Compl. (Ready to Prod.) 6-18-92	13. Elevations (DF& RKB, RT, GR, etc.) 3545' GR	14. Elev. Casinghead	
15. Total Depth 8134'	16. Plug Back T.D. 7918'	17. If Multiple Compl. How Many Zones?	18. Intervals Drilled By Rotary Tools 0-8134'	Cable Tools	
19. Producing Interval(s), of this completion - Top, Bottom, Name 7752-7814' Canyon				20. Was Directional Survey Made No	
21. Type Electric and Other Logs Run CNL/LDT; DLL				22. Was Well Cored No	
23. CASING RECORD (Report all strings set in well)					
CASING SIZE	WEIGHT LB/FT.	DEPTH SET	HOLE SIZE	CEMENTING RECORD	AMOUNT PULLED
20"		40'	26"	RediMix	
9-5/8"	36#	1075'	14-3/4"	1000 sx	
7"	23# & 26#	8134'	8-3/4"	1600 sx	
24. LINER RECORD					
SIZE	TOP	BOTTOM	SACKS CEMENT	SCREEN	
			25. TUBING RECORD		
			SIZE	DEPTH SET	PACKER SET
			2-7/8"	7588'	
26. Perforation record (interval, size, and number) 7752-7814' w/26 - .50" Holes			27. ACID, SHOT, FRACTURE, CEMENT, SQUEEZE, ETC.		
			DEPTH INTERVAL		
			AMOUNT AND KIND MATERIAL USED		
			7752-7814'		
			w/11400g. 20% NEFE		
28. PRODUCTION					
Date First Production 6-17-92		Production Method (Flowing, gas lift, pumping - Size and type pump) Pumping			Well Status (Prod. or Shut-in) Producing
Date of Test 6-18-92	Hours Tested 24	Choke Size 2"	Prod'n For Test Period	Oil - Bbl. 189	Gas - MCF 222
				Water - Bbl. 283	Gas - Oil Ratio 1175
Flow Tubing Press. 30#	Casing Pressure 75#	Calculated 24-Hour Rate	Oil - Bbl. 189	Gas - MCF 222	Water - Bbl. 283
					Oil Gravity - API - (Corr.) 42
29. Disposition of Gas (Sold, used for fuel, vented, etc.) Sold - connected to Yates Gas Gathering 6-17-92					Test Witnessed By John Dehler
30. List Attachments Deviation Survey, Logs					
31. I hereby certify that the information shown on both sides of this form is true and complete to the best of my knowledge and belief					
Signature 		Printed Name <u>Juanita Goodlett</u> Title <u>Production Supv.</u> Date <u>6-25-92</u>			

INSTRUCTIONS

This form is to be filed with the appropriate District Office of the Division not later than 20 days after the completion of any newly-drilled or deepened well. It shall be accompanied by one copy of all electrical and radio-activity logs run on the well and a summary of all special tests conducted, including drill stem tests. All depths reported shall be measured depths. In the case of directionally drilled wells, true vertical depths shall also be reported. For multiple completions, Items 25 through 29 shall be reported for each zone. The form is to be filed in quintuplicate except on state land, where six copies are required. See Rule 1105.

INDICATE FORMATION TOPS IN CONFORMANCE WITH GEOGRAPHICAL SECTION OF STATE

Southeastern New Mexico		Northwestern New Mexico	
T. Anhy	T. Canyon 7628	T. Ojo Alamo	T. Penn. "B"
T. Salt	T. Strawn	T. Kirtland-Fruitland	T. Penn. "C"
B. Salt	T. Atoka	T. Pictured Cliffs	T. Penn. "D"
T. Yates	T. Miss	T. Cliff House	T. Leadville
T. 7 Rivers	T. Devonian	T. Menefee	T. Madison
T. Queen	T. Silurian	T. Point Lookout	T. Elbert
T. Grayburg	T. Montoya	T. Mancos	T. McCracken
T. San Andres 614	T. Simpson	T. Gallup	T. Ignacio Otzte
T. Glorieta 2040	T. McKee	Base Greenhorn	T. Granite
T. Paddock	T. Ellenburger	T. Dakota	T.
T. Blinebry	T. Gr. Wash	T. Morrison	T.
T. Tubb	T. Delaware Sand	T. Todilto	T.
T. Drinkard	T. Bone Springs	T. Entrada	T.
T. Abo	T.	T. Wingate	T.
T. Wolfcamp LM 5468	T.	T. Chinle	T.
T. Penn	T.	T. Permian	T.
T. Cisco (Bough C)	T.	T. Penn "A"	T.

OIL OR GAS SANDS OR ZONES

No. 1, from.....to.....	No. 3, from.....to.....
No. 2, from.....to.....	No. 4, from.....to.....

IMPORTANT WATER SANDS

Include data on rate of water inflow and elevation to which water rose in hole.

No. 1, from.....to.....	feet.....
No. 2, from.....to.....	feet.....
No. 3, from.....to.....	feet.....

LITHOLOGY RECORD (Attach additional sheet if necessary)

From	To	Thickness in Feet	Lithology	From	To	Thickness in Feet	Lithology
0	40	40	Surface				
40	3800	3760	Dolo				
3800	4040	240	LS, Dolo, Cht				
4040	4300	260	Dolo, SS, Sh				
4300	4610	310	Dolo, Sh				
4610	5468	858	Dolo				
5468	7030	1562	LS, Sh				
7030	7430	400	Sh, LS, SS				
7430	7600	170	SS, Sh				
7600	7750	150	Sh, LS				
7750	8134	384	LS, Sh				

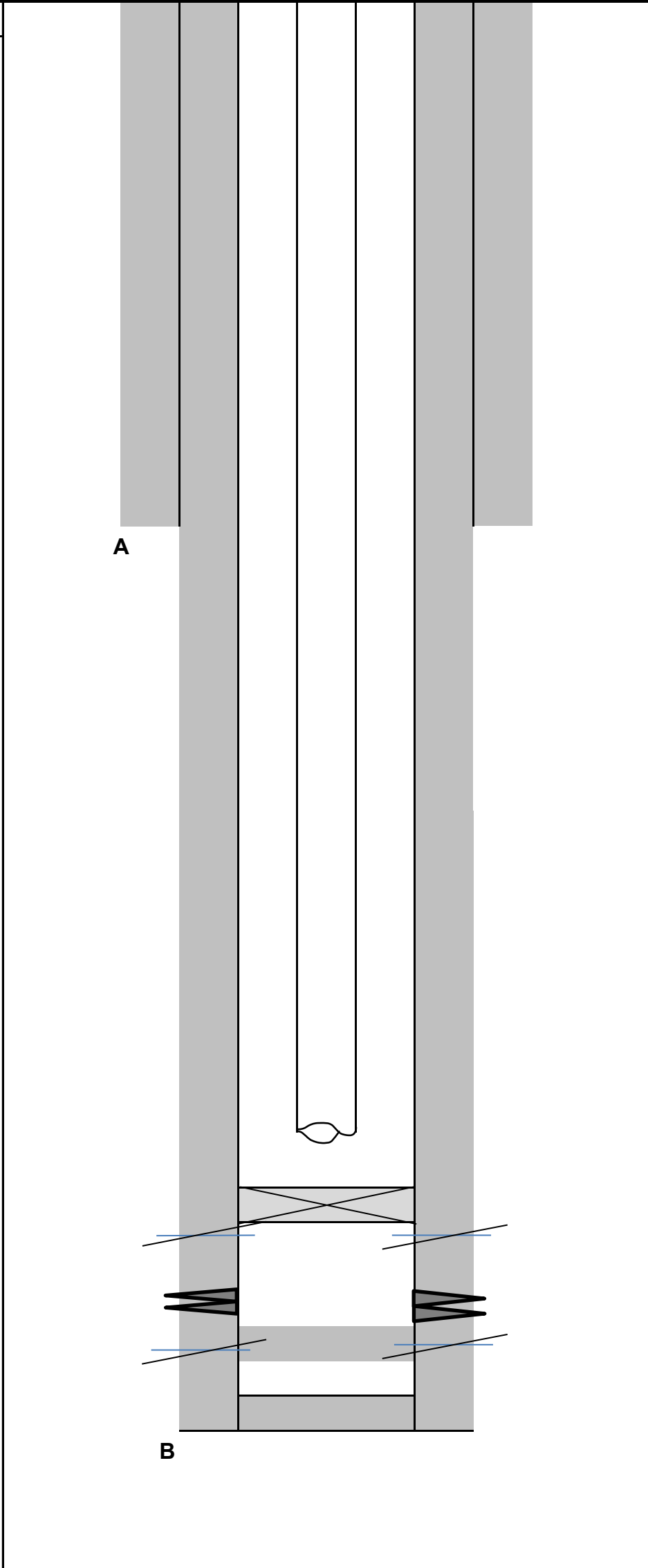
Roy AET No. 4 Recompletion Procedure

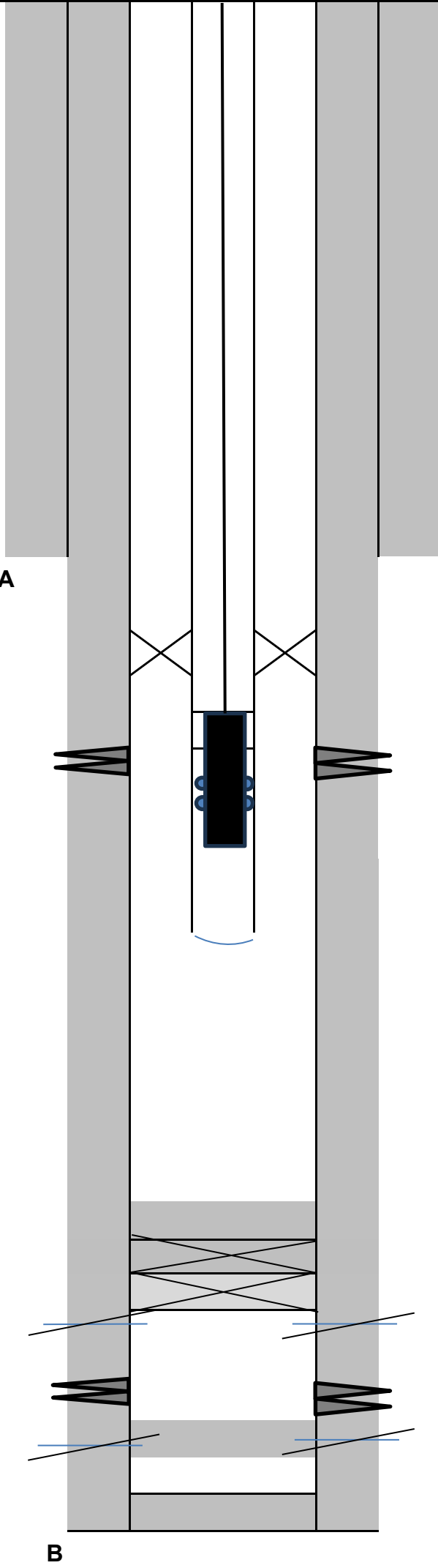
Objective: Recomplete to the Abo

Summary: MIRU workover rig. POOH while scanning tbg. Stand back 4,900' of tbg. RU wireline. Set CIBP at +/- 7,675'. Test csg. Dump bail 35' cmt on CIBP. Run CBL. GIH w/ csg gun and perf the Abo from 4884-88', 4872-77', 4854-62', 4818-38' w/ 5" csg gun. GIH with Mod R type pkr. Acidize perfs w/ 5000 gals 20% NEFE HCL acid. POOH w/ pkr. Run rod pumping assy and place on production.

Procedure:

- 1) MIRU double drum workover rig with pump and tank. Load tank with 3% KCL.
- 2) Bleed down tbg and csg pressure. Load tbg and csg as needed. ND tree. NU BOP's. POOH with tbg. RU scanners and scan tbg while POOH. Stand back 4,900' of tbg.
- 3) RU cased hole wireline. Make gauge ring/junk basket run to CIBP at 7,700'. GIH and set CIBP at +/- 7,675'. Do not set plug any shallower than 7,752'. Load csg with KCL water and test csg to 500 psi. GIH and dump bail 35' cmt on CIBP. Run GR/CCL/VDL-Radial CBL from 5,000' to surface. Make pressure pass only if needed and with no more than 500 psi on csg. Correlate and tie in log to Schlumberger Dual Laterolog/Micro-SFL/Gamma Ray log dated 06/05/1992. GIH with 5" csg gun loaded 4 spf with deep penetrating charges and perforate the Abo from 4,818' - 4,838', 4,854' - 4,862', 4,872' - 4,877', and 4,884' - 4,888' as per Schlumberger Dual Laterolog/Micro-SFL/Gamma Ray log dated 06/05/1992.
- 4) GIH with Mod R/Arrowset 3 type pkr and seating nipple on 2 7/8" tbg to +/- 4,780'.
- 5) RU swab and swab test well.
- 6) If warranted, RU acid pump and acidize perfs with 5,000 gals 20% NEFE HCL acid. Drop balls for diversion.
- 7) RU swab and swab test.
- 8) Load well with 3 % KCL. POOH with tbg and pkr. GIH with mud anchor, perf nipple, SN, and TAC on 2 7/8" tbg. Pump depth will be determined after swab test. ND BOP. Install pumping tee. Run rods and pump.
- 9) Install horse head and hang rods on pumping unit. Hook up flowline. RD workover rig. Install 4" poly flowline to facility. Set used tanks and separator at facility. Place well on production.

ROY AET #4 Current				Sec-TWN-RNG:		Sec 8-T19S-R25E Unit O		30-015-26977					
				Footage Calls:		660' FSL & 1,980' FEL							
COMMENTS													
<div>DV Tool at 5342</div> <div>CIBP @ 7700</div> <div>Canyon/ U Penn Perfs 7752-7814 Sqz drld out to 7920 Blk Sqz Perfs 7715 & 8060</div>	<div>A</div> <div>B</div>			Casing Detail									
				#	HOLE	CSG	WGHT	GRADE	Top	Depth	TOC	SX	
				A	14.75	9.63	36	J55	0	1,075	Surface	1000	
				B	8.75	7.00	23 & 26	J55 & N80	0	8,134	Surface	1600	DV tool @ 5342
				FORMATION TOPS									
				FORMATION		TOP (FT)		FORMATION		TOP			
				TUBING DETAIL									
				OD	GRADE	WGHT	TOP	BASE	COMMENTS				
				2.875"	J55	6.5	0	7,624	240 jts open ended				
PERFORATION DETAIL													
	FORMATION		TOP	BASE	TREATMENT								
A	CANYON/U PENN		7,752	7,814									
TD: 8,134 MD													

ROY AET #4 Proposed				Sec-TWN-RNG:		Sec 8-T19S-R25E Unit O			30-015-26977					
				Footage Calls:		660' FSL & 1,980' FEL								
<div>COMMENTS</div> <div>2 7/8" tbg</div> <div>TAC</div> <div>Abo perfs 4818-38 4854-62 4872-77 4884-88</div> <div>DV Tool at 5342</div> <div>CIBP @ 7695 w/ 35' cmt CIBP @ 7700</div> <div>Canyon/ U Penn Perfs 7752-7814 Sqz drld out to 7920 Blk Sqz Perfs 7715 & 8060</div>				CASING DETAIL										
				#	HOLE	CSG	WGHT	GRADE	Top	Depth	TOC	SX		
				A	14.75	9.63	36	J55	0	1,075	Surface	1000		
				B	8.75	7.00	23 & 26	J55 & N80	0	8,134	Surface	1600	DV tool @ 5342	
				FORMATION TOPS										
				FORMATION		TOP (FT)		FORMATION			TOP			
				TUBING DETAIL										
				OD		GRADE		WGHT		TOP		BASE		COMMENTS
				2.875"		J55		6.5		0		5,000		
				PERFORATION DETAIL										
					FORMATION			TOP		BASE		TREATMENT		
				A	CANYON/U PENN			7,752		7,814				
				B	Abo			4,818		4,888		5,000 gals 20% NEFE		
TD: 8,134 MD														

District I
1625 N. French Dr., Hobbs, NM 88240
Phone:(575) 393-6161 Fax:(575) 393-0720
District II
811 S. First St., Artesia, NM 88210
Phone:(575) 748-1283 Fax:(575) 748-9720
District III
1000 Rio Brazos Rd., Aztec, NM 87410
Phone:(505) 334-6178 Fax:(505) 334-6170
District IV
1220 S. St Francis Dr., Santa Fe, NM 87505
Phone:(505) 476-3470 Fax:(505) 476-3462

State of New Mexico
Energy, Minerals and Natural Resources
Oil Conservation Division
1220 S. St Francis Dr.
Santa Fe, NM 87505

CONDITIONS

Action 267920

CONDITIONS

Operator: Silverback Operating II, LLC 19707 IH10 West, Suite 201 San Antonio, TX 78256	OGRID: 330968
	Action Number: 267920
	Action Type: [C-101] Drilling Non-Federal/Indian (APD)

CONDITIONS

Created By	Condition	Condition Date
ward.rikala	Following conclusion of recompletion, submit a subsequent report for the work performed.	9/26/2023