

Well Name: SD EA 18 19 FED COM P15	Well Location: T26S / R33E / SEC 18 / NENE / 32.049537 / -103.605918	County or Parish/State: LEA / NM
Well Number: 17H	Type of Well: OIL WELL	Allottee or Tribe Name:
Lease Number: NMNM132070	Unit or CA Name:	Unit or CA Number:
US Well Number: 300254408900X1	Well Status: Abandoned	Operator: CHEVRON USA INCORPORATED

Accepted for record –NMOCD gc11/2/2023

Subsequent Report

Sundry ID: 2757425

Type of Submission: Subsequent Report

Type of Action: Plug and Abandonment

Date Sundry Submitted: 10/21/2023

Time Sundry Submitted: 01:41

Date Operation Actually Began: 09/14/2023

Actual Procedure: See attachments.

SR Attachments

Actual Procedure

Subsequent_Report_20231021134058.pdf

Well Name: 6301 DEAVILLE BLVD COM
P15

Well Location: T26S / R33E / SEC 18 /
NENE / 32.049537 / -103.605918

County or Parish/State: LEA /
NM

Well Number: 17H

Type of Well: OIL WELL

Allottee or Tribe Name:

Lease Number: NMNM132070

Unit or CA Name:

Unit or CA Number:

US Well Number: 300254408900X1

Well Status: Abandoned

Operator: CHEVRON USA
INCORPORATED

Operator

I certify that the foregoing is true and correct. Title 18 U.S.C. Section 1001 and Title 43 U.S.C. Section 1212, make it a crime for any person knowingly and willfully to make to any department or agency of the United States any false, fictitious or fraudulent statements or representations as to any matter within its jurisdiction. Electronic submission of Sundry Notices through this system satisfies regulations requiring a

Operator Electronic Signature: MARK TORRES

Signed on: OCT 21, 2023 01:41 PM

Name: CHEVRON USA INCORPORATED

Title: Well Abandonment Engineer

Street Address: 6301 DEAVILLE BLVD

City: MIDLAND

State: TX

Phone: (989) 264-2525

Email address: MARKTORRES@CHEVRON.COM

Field

Representative Name:

Street Address:

City:

State:

Zip:

Phone:

Email address:

BLM Point of Contact

BLM POC Name: JAMES A AMOS

BLM POC Title: Acting Assistant Field Manager

BLM POC Phone: 5752345927

BLM POC Email Address: jamos@blm.gov

Disposition: Accepted

Disposition Date: 10/31/2023

Signature: James A Amos



P&A Operations Summary - External

Well Name SD EA 18 19 FED COM P15 17H	Field Name Bone Spring	Lease SD EA 18 19 FED COM P15	Area Delaware Basin
Business Unit Mid-Continent	County/ Parish Lea	Global Metrics Region Lower 48	Surface UWI 3002544089
Basic Well Data			
Current RKB Elevation 3,264.00, 6/4/2018	Original RKB Elevation (ft) 3,264.00	Latitude (°) 32° 2' 57.883" N	Longitude (°) 103° 36' 19.62" W
Daily Operations			
Start Date	Summary		
4/6/2023			
9/14/2023	Held safety meeting. Move from Cooksey 26-1H to Salado draw 18-17. MIRU ND WH NU BOP		
9/15/2023	Held safety meeting, check pressure. MIRU WL tagged at 10' RDWL MIRU FMC remove back pressure valve		
9/18/2023	Held safety meeting, check pressure. RU Renegade WL run CBL (TOC at +/- 3,500'). RDWL and TIH to 2800'		
9/19/2023	Held safety meeting, check pressure. TIH tag at 12037' Pump 35 sacks H cement at 12037'-11705' TOH WOC		
9/20/2023	Held safety meeting, check pressure, Tag TOC at 11900 TOH Pump 60 sacks H cement at 11455-10887 TOH Pump 25 sacks H cement at 9140-8903 TOH Pump 25 sacks C cement at 6050-5788 TOH Pump 35 sacks C cement at 4980-4609' TOH WOC		
9/21/2023	Held safety meeting check pressure. TIH tag TOC at 4490' TOH to 2600'		
9/22/2023	Held safety meeting check pressure. RU Renegade WL perf at 3500' Pump 160 sacks C cement at 3500'-2941' WOC		
9/23/2023	Held safety meeting, check pressure. Tag TOC at 2838' TOH RUWL perf at 2600' unable to EIR perf at 2500 EIR TIH to 2650 Pump 25 sacks C cement at 2650'-2388' TOH Pump 145 sacks C cement at 2500'-1993' WOC		
9/25/2023	Held safety meeting check pressure. Tag TOC at 1981 TOH RUWL perf at 1750, 1600, 1500 unable to circulate RDWL		
9/26/2023	Held safety meeting, check pressure. MIRU WL run CBL Perf at 1750 break circulation cut casing at 1750 RDWL ND BOPE NU BOPE		
9/27/2023	Held safety meeting check pressure. Tested BOP Released latch ring, unable to pull casing due lack of tools		
9/28/2023	Held safety meeting, check pressure. RU casing jacks worked hanger free at 300k Pulled hanger free of WH and was unable remove hanger from BOP Contacted team shut in well		
9/29/2023	Held safety meeting, check pressure. MIRU WL cut casing at 1740 RDWL RU casing jacks worked casing up to 300k Pulled hanger free out of WH and circulated well clean still unable pull with rig		
10/2/2023	Held safety meeting, check pressure. Prep for jacking out casing laydown 1 joint of 5-1/2 casing due storm moving in		
10/3/2023	LD 5-1/2" csg f/ 1,750' - 0'. Change over to 2-3/8 equipment TIH with scraper to 1640		
10/4/2023	Held safety meeting, check pressure. TOH install bit worked down to 1750' circulate clean TOH laydown BHA TIH Pump 40 sacks C cement at 1800-1650 TOH		
10/5/2023	Held safety meeting, check pressure RUWL log well TIH Spot mud TOH TIH Pump 155 sacks C cement at 892-400 TOH WOC		
10/6/2023	Held safety meeting, check pressure. TIH tag TOC at 411 TOH RUWL perf at 400,320,300 circulated clear TIH Pump 35 sacks C cement at 411'-300' TOH Pump 190 sacks C cement at 300'-0' R/D		

AS PLUGGED WELLBORE DIAGRAM

FIELD: Delaware Basin
 LEASE/UNIT: SD EA 18 19 FED COM P15
 WELL NO.: 17H
 COUNTY: Lea ST: New Mexico
 LOCATION: 455' FNL & 955' FEL, Sec. 18, T-26S, R-33E

API NO.: 30-025-44089
 CHEVNO:
 PROD FORMATION:
 STATUS: TA'd

Spud Date: 6/4/2018
 TD Date: 12/5/2018
 Comp Date: 7/23/2019
 GL: 3,264'
 KB: 3,264'

Base of Fresh Water: 200'
R-111-P: NO

Conductor Casing

Size: 20"
 Wt., Grd.: 94# H-40
 Depth: 153'
 TOC: Surf
 Hole Size: 24"

Surface Casing

Size: 13-3/8"
 Wt., Grd.: 54.5# J55 STC
 Depth: 842'
 Sxs Cmt: 803 sx
 Circulate: Yes - 92 bbls
 TOC: Surf
 Hole Size: 17-1/2"

Intermediate Casing

Size: 9-5/8"
 Wt., Grd.: 43.5# L80
 Depth: 11,405'
 DV Tool: 4,789'
 Sxs Cmt: 2191 sx
 Circulate: Yes - 112 bbls
 TOC: Surf
 Hole Size: 12-1/4"

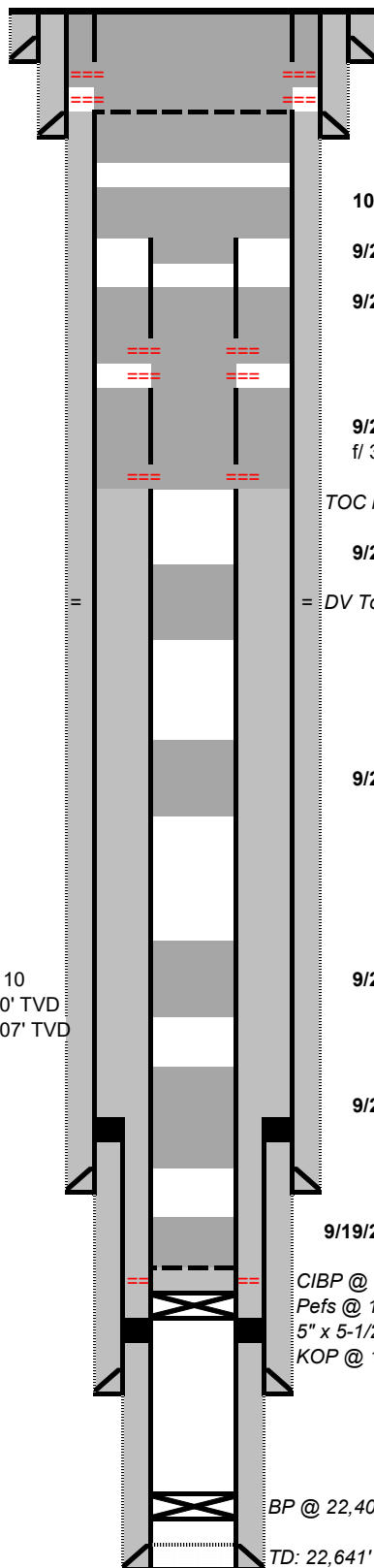
Intermediate Liner

Size: 7-5/8"
 Wt., Grd.: 29.7# P110
 Depth: 12,210' MD
 Liner Top: 11,075' MD
 Sxs Cmt: 149 sx Class H
 Circulate: No
 TOC: Unknown
 Hole Size: 8-1/2"

Production Casing

Size: 5" XO to 5-1/2"
 Wt., Grd.: 18# P110, 20# P110
 Depth: 22,591' MD/12,600' TVD
 Crossover Depth: 12,207' MD / 12,207' TVD
 Sxs Cmt: 1895 sx
 Circulate: No
 TOC: 11,063' (CALC)
 Hole Size: 6-3/4"

Formation	Top (MD)
Rustler	800'
Castile	3,480'
Lamar	4,900'
Bell Canyon	4,930'
Cherry Canyon	5,970'
Brushy Canyon	7,620'
Bone Spring	9,090'
Upper Avalon	9,120'
Bone Spring 1	10,040'
Wolfcamp	12140'



10/6/23: Perf 9-5/8" csg @ 400', 325', 300' (est. circ)
 Spot 35 sx Class C f/ 411' - 300', circulate 190 sx
 Class C f/ 300' - 0' (inside out 9-5/8"

10/5/23: Spot 155 sx Class C f/ 892' - 400'
 Tag plug @ 411'

10/4/23: Spot 40 sx Class C f/ 1,800' - 1,650'
 Tag plug @ 1,635'

9/26/23 - 10/3/23: Cut/pull 5-1/2" f/ 1,750'

9/23/23: Perf @ 2,600' (no inj.), perf @ 2,500' (est. circ)
 Spot 25 sx Class C f/ 2,600' - 2,388'
 Circ. 145 sx Class C f/ 2,500' - 1,993'
 Tag plug @ 1,981'

9/22/23: Perf @ 3,500' and circ. 160 sx Class C
 f/ 3,500' - 2,941'; tag plug @ 2,836'

TOC behind 5-1/2" @ 3,500' per CBL 9/18/2023

9/20/23: Spot 35 sx Class C f/ 4,980' - 4,609'
 Tag plug @ 4,490'
 = DV Tool @ 4,789'

9/20/23: Spot 25 sx Class C f/ 6,050' - 5,788'

9/20/23: Spot 25 sx Class H f/ 9,140' - 8,903'

9/20/23: Spot 60 sx Class H f/ 11,455' - 10,887'

9/19/23: Spot 35 sx Class H f/ 12,037' - 11,705'
 Tag plug @ 11,900'

CIBP @ 12,100' w/ 30' cement dump bailed on top (2022)
 Pefs @ 12,160' - 12,165' (cement squeeze 2019)
 5" x 5-1/2" XO @ 12,207'
 KOP @ 12,288' MD

H2S Concentration >100 PPM? NO
NORM Present in Area? NO

BP @ 22,403' MD

TD: 22,641' MD / 12,614' TVD

CURRENT WELLBORE DIAGRAM

FIELD: Delaware Basin API NO.: 30-025-44089
 LEASE/UNIT: SD EA 18 19 FED COM P15 CHEVNO:
 WELL NO.: 17H PROD FORMATION:
 COUNTY: Lea ST: New Mexico STATUS: TA'd
 LOCATION: 455' FNL & 955' FEL, Sec. 18, T-26S, R-33E

Spud Date: 6/4/2018
 TD Date: 12/5/2018
 Comp Date: 7/23/2019
 GL: 3,264'
 KB: 3,264'

Base of Fresh Water: 200'
 R-111-P: NO

Conductor Casing

Size: 20"
 Wt., Grd.: 94# H-40
 Depth: 153'
 TOC: Surf
 Hole Size: 24"

Surface Casing

Size: 13-3/8"
 Wt., Grd.: 54.5# J55 STC
 Depth: 842'
 Sxs Cmt: 803 sx
 Circulate: Yes - 92 bbls
 TOC: Surf
 Hole Size: 17-1/2"

Intermediate Casing

Size: 9-5/8"
 Wt., Grd.: 43.5# L80
 Depth: 11,405'
 DV Tool: 4,789'
 Sxs Cmt: 2191 sx
 Circulate: Yes - 112 bbls
 TOC: Surf
 Hole Size: 12-1/4"

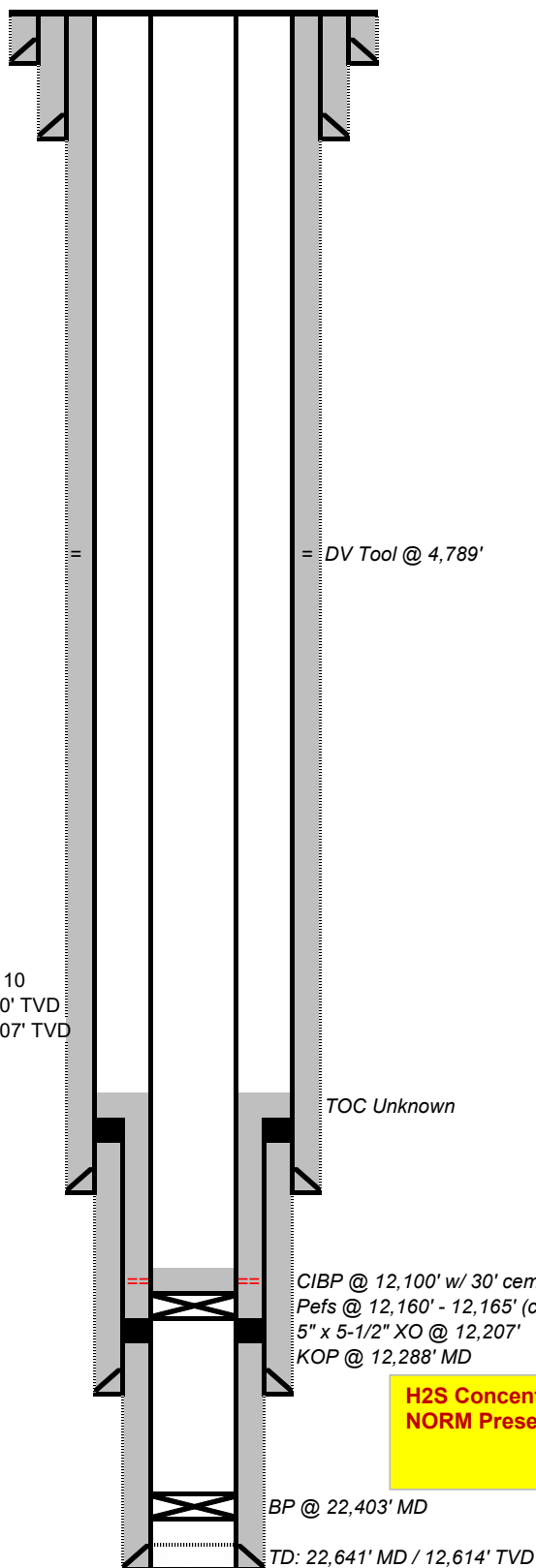
Intermediate Liner

Size: 7-5/8"
 Wt., Grd.: 29.7# P110
 Depth: 12,210' MD
 Liner Top: 11,075' MD
 Sxs Cmt: 149 sx Class H
 Circulate: No
 TOC: Unknown
 Hole Size: 8-1/2"

Production Casing

Size: 5" XO to 5-1/2"
 Wt., Grd.: 18# P110, 20# P110
 Depth: 22,591' MD/12,600' TVD
 Crossover Depth: 12,207' MD / 12,207' TVD
 Sxs Cmt: 1895 sx
 Circulate: No
 TOC: Unknown
 Hole Size: 6-3/4"

Formation	Top (MD)
Rustler	800'
Castile	3,480'
Lamar	4,900'
Bell Canyon	4,930'
Cherry Canyon	5,970'
Brushy Canyon	7,620'
Bone Spring	9,090'
Upper Avalon	9,120'
Bone Spring 1	10,040'
Wolfcamp	12140'



District I
1625 N. French Dr., Hobbs, NM 88240
Phone:(575) 393-6161 Fax:(575) 393-0720
District II
811 S. First St., Artesia, NM 88210
Phone:(575) 748-1283 Fax:(575) 748-9720
District III
1000 Rio Brazos Rd., Aztec, NM 87410
Phone:(505) 334-6178 Fax:(505) 334-6170
District IV
1220 S. St Francis Dr., Santa Fe, NM 87505
Phone:(505) 476-3470 Fax:(505) 476-3462

State of New Mexico
Energy, Minerals and Natural Resources
Oil Conservation Division
1220 S. St Francis Dr.
Santa Fe, NM 87505

COMMENTS

Action 281666

COMMENTS

Operator: CHEVRON U S A INC 6301 Deauville Blvd Midland, TX 79706	OGRID: 4323
	Action Number: 281666
	Action Type: [C-103] Sub. Plugging (C-103P)

COMMENTS

Created By	Comment	Comment Date
plmartinez	DATA ENTRY PM.	11/3/2023

District I
1625 N. French Dr., Hobbs, NM 88240
Phone:(575) 393-6161 Fax:(575) 393-0720
District II
811 S. First St., Artesia, NM 88210
Phone:(575) 748-1283 Fax:(575) 748-9720
District III
1000 Rio Brazos Rd., Aztec, NM 87410
Phone:(505) 334-6178 Fax:(505) 334-6170
District IV
1220 S. St Francis Dr., Santa Fe, NM 87505
Phone:(505) 476-3470 Fax:(505) 476-3462

State of New Mexico
Energy, Minerals and Natural Resources
Oil Conservation Division
1220 S. St Francis Dr.
Santa Fe, NM 87505

CONDITIONS

Action 281666

CONDITIONS

Operator: CHEVRON U S A INC 6301 Deauville Blvd Midland, TX 79706	OGRID: 4323
	Action Number: 281666
	Action Type: [C-103] Sub. Plugging (C-103P)

CONDITIONS

Created By	Condition	Condition Date
gcordero	None	11/2/2023