

Submit 1 Copy To Appropriate District

Office

District I - (575) 393-6161

1625 N. French Dr., Hobbs, NM 88240

District II - (575) 748-1283

811 S. First St., Artesia, NM 88210

District III - (505) 334-6178

1000 Rio Brazos Rd., Aztec, NM 87410

District IV - (505) 476-3460

1220 S. St. Francis Dr., Santa Fe, NM

87505

State of New Mexico
Energy, Minerals and Natural ResourcesOIL CONSERVATION DIVISION
1220 South St. Francis Dr.
Santa Fe, NM 87505Form C-103
Revised July 18, 2013WELL API NO.
30-045-24262

5. Indicate Type of Lease

STATE ☐ FEE ☒

6. State Oil & Gas Lease No.

7. Lease Name or Unit Agreement Name
Dorothy

8. Well Number. 001

9. OGRID Number
23645210. Pool name or Wildcat
CHA CHA Gallup

SUNDRY NOTICES AND REPORTS ON WELLS

(DO NOT USE THIS FORM FOR PROPOSALS TO DRILL OR TO DEEPEN OR PLUG BACK TO A DIFFERENT RESERVOIR. USE "APPLICATION FOR PERMIT" (FORM C-101) FOR SUCH PROPOSALS.)

1. Type of Well: Oil Well ☒ Gas Well ☐ Injection Well ☐2. Name of Operator
Petro Mex LLC3. Address of Operator
P.O. Box 6724, Farmington, NM 87499-6724

4. Well Location

Unit Letter I : 1840 feet from the S line and 520 feet from the E line
Section 11 Township 29N Range 15W NMPM San Juan County11. Elevation (Show whether DR, RKB, RT, GR, etc.)
GL: 5170'

12. Check Appropriate Box to Indicate Nature of Notice, Report or Other Data

NOTICE OF INTENTION TO:

PERFORM REMEDIAL WORK ☐ PLUG AND ABANDON ☒
TEMPORARILY ABANDON ☐ CHANGE PLANS ☐
PULL OR ALTER CASING ☐ MULTIPLE COMPL ☐
☒ DOWNHOLE COMMINGLE
☒ CLOSED-LOOP SYSTEM ☐
OTHER: ☐

SUBSEQUENT REPORT OF:

REMEDIAL WORK ☐ ALTERING CASING ☐
COMMENCE DRILLING OPNS. ☐ AND A ☐
CASING/CEMENT JOB ☐
OTHER: ☐

13. Describe proposed or completed operations. (Clearly state all pertinent details, and give pertinent dates, including estimated date of starting any proposed work). SEE RULE 19.15.7.14 NMAC. For Multiple Completions: Attach wellbore diagram of proposed completion or recompletion.

Intent to P&A this well. Notify NMOCD to witness plugging operations.

MIRU, NU BOP, POH with any rods and tubing from well set @ 4508'.

Set CIBP @ 4125'. Run CBL prior to pumping any cement, plugs may change depending on CBL results. Attempt to pressure test casing to 600#. If casing does not test, spot or tag plugs as necessary. Mix and pump 12 sxs Class G Cement above CIBP @ 4125'. WOC and tag.

Perforate 4-1/2" casing @ 3254'. Set CR @ 3204' and test ROI. Mix and squeeze sxs Class G Cement; sxs outside and sxs inside. WOC and tag.

PUH to 2897'. Mix and pump 12 sxs Class G Cement. WOC and tag.

PUH to 1333'. Mix and pump 12 sxs Class G Cement. WOC and tag.

PUH to 352' (8-5/8" casing x 12-1/4" hole set @ 298' with 250 sxs Cement, Circ ~2-1/2 bbls to surface). Mix and Pump 28 sxs Class G Cement to surface. WOC and tag.

Cut off WH. Install 4" diameter 4' tall Above Grade P&A marker. Top off as necessary. Record Long/Lat.

Note: 50' excess cement required for inside.

Note: 100% cement excess to be used inside open hole.

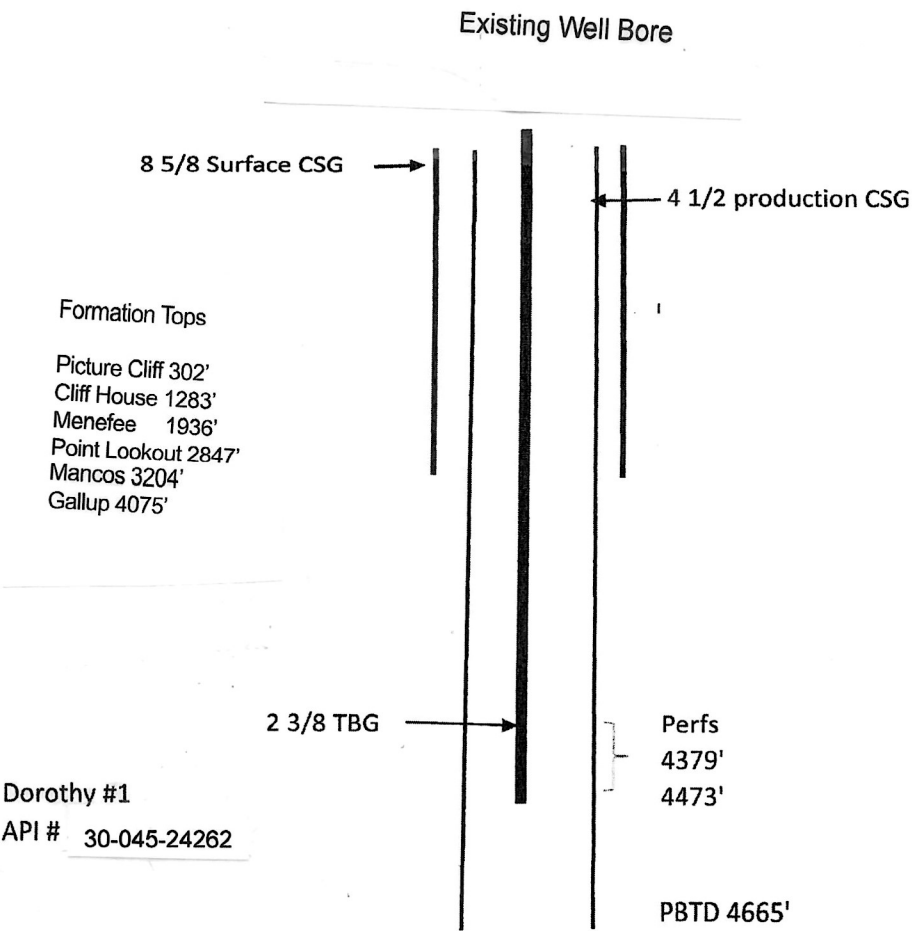
I hereby certify that the information above is true and complete to the best of my knowledge and belief.

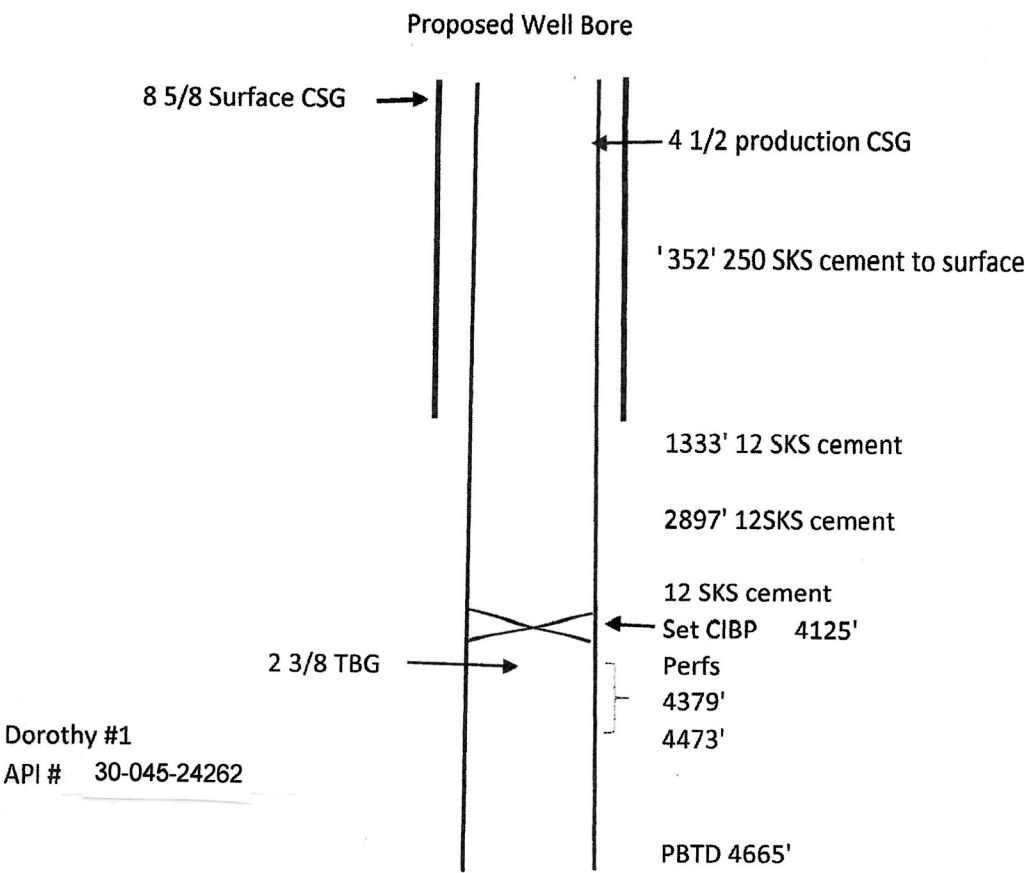
SIGNATURE Linn R Wilson TITLE V.P. Operations DATE 9/29/2023Type or print name Linn R Wilson E-mail address: linn-wilson@3ism.com PHONE: 505 486 5557

For State Use Only

APPROVED BY: Monica Kuehling TITLE Deputy Oil and Gas Inspector DATE 11/13/2023

Conditions of Approval (if any):





Please see Attached form C-103

District I
1625 N. French Dr., Hobbs, NM 88240
Phone:(575) 393-6161 Fax:(575) 393-0720
District II
811 S. First St., Artesia, NM 88210
Phone:(575) 748-1283 Fax:(575) 748-9720
District III
1000 Rio Brazos Rd., Aztec, NM 87410
Phone:(505) 334-6178 Fax:(505) 334-6170
District IV
1220 S. St Francis Dr., Santa Fe, NM 87505
Phone:(505) 476-3470 Fax:(505) 476-3462

State of New Mexico
Energy, Minerals and Natural Resources
Oil Conservation Division
1220 S. St Francis Dr.
Santa Fe, NM 87505

CONDITIONS

Action 270878

CONDITIONS

Operator: PETRO MEX LLC P.O. Box 6724 Farmington, NM 87499	OGRID: 236452
	Action Number: 270878
	Action Type: [C-103] NOI Plug & Abandon (C-103F)

CONDITIONS

Created By	Condition	Condition Date
mkuehling	two stage cement job - where is the dv tool will need to cover dv tool with plug - tag first plug - add chacra plug Chacra top 810 feet - Notify NMOCD 24 hours prior to moving on	11/13/2023