

Office  
 District I – (575) 393-6161  
 1625 N. French Dr., Hobbs, NM 88240  
 District II – (575) 748-1283  
 811 S. First St., Artesia, NM 88210  
 District III – (505) 334-6178  
 1000 Rio Brazos Rd., Aztec, NM 87410  
 District IV – (505) 476-3460  
 1220 S. St. Francis Dr., Santa Fe, NM  
 87505

State of New Mexico  
 Energy, Minerals and Natural Resources

Form C-103  
 Revised July 18, 2013

OIL CONSERVATION DIVISION  
 1220 South St. Francis Dr.  
 Santa Fe, NM 87505

WELL API NO. MULTIPLE
5. Indicate Type of Lease STATE <input type="checkbox"/> FEE <input type="checkbox"/>
6. State Oil & Gas Lease No.
7. Lease Name or Unit Agreement Name Resolute 12 Fed Com
8. Well Number MULTIPLE
9. OGRID Number 7377
10. Pool name or Wildcat

<b>SUNDRY NOTICES AND REPORTS ON WELLS</b> (DO NOT USE THIS FORM FOR PROPOSALS TO DRILL OR TO DEEPEN OR PLUG BACK TO A DIFFERENT RESERVOIR. USE "APPLICATION FOR PERMIT" (FORM C-101) FOR SUCH PROPOSALS.)	
1. Type of Well: Oil Well <input checked="" type="checkbox"/> Gas Well <input type="checkbox"/> Other <input type="checkbox"/>	
2. Name of Operator EOG Resources, Inc.	
3. Address of Operator P.O. Box 2267, Midland, TX 79702	
4. Well Location Unit Letter _____: _____ feet from the _____ line and _____ feet from the _____ line Section 12 Township 25S Range 33E NMPM Lea County	
11. Elevation (Show whether DR, RKB, RT, GR, etc.)	

12. Check Appropriate Box to Indicate Nature of Notice, Report or Other Data

<b>NOTICE OF INTENTION TO:</b> PERFORM REMEDIAL WORK <input type="checkbox"/> PLUG AND ABANDON <input type="checkbox"/> TEMPORARILY ABANDON <input type="checkbox"/> CHANGE PLANS <input type="checkbox"/> PULL OR ALTER CASING <input type="checkbox"/> MULTIPLE COMPL <input type="checkbox"/> DOWNHOLE COMMINGLE <input type="checkbox"/> CLOSED-LOOP SYSTEM <input type="checkbox"/> OTHER: <input type="checkbox"/>		<b>SUBSEQUENT REPORT OF:</b> REMEDIAL WORK <input type="checkbox"/> ALTERING CASING <input type="checkbox"/> COMMENCE DRILLING OPNS. <input type="checkbox"/> P AND A <input type="checkbox"/> CASING/CEMENT JOB <input type="checkbox"/> OTHER: PLC-778 <input checked="" type="checkbox"/>	
--	--	--	--

13. Describe proposed or completed operations. (Clearly state all pertinent details, and give pertinent dates, including estimated date of starting any proposed work). SEE RULE 19.15.7.14 NMAC. For Multiple Completions: Attach wellbore diagram of proposed completion or recompletion.

Pursuant to Administrative Order PLC-778 EOG Resources, Inc. ("EOG") respectfully request to add the following wells authorized to commingle production at the central tank battery located in the S2 of Section 12, Township 25 South, Range 33 East, Lea County, NM. All production from the subject well will be allocated using readings from individual well meters.

Resolute 12 Fed Com 206H	30-025-51458	Resolute 12 Fed Com 582H	30-025-47595
Resolute 12 Fed Com 510H	30-025-51279	Resolute 7 Fed Com 511H	30-025-51223
Resolute 12 Fed Com 517H	30-025-51280		
Resolute 12 Fed Com 519H	30-025-51282		
Resolute 12 Fed Com 581H	30-025-51281		

Spud Date:

Rig Release Date:

I hereby certify that the information above is true and complete to the best of my knowledge and belief.

SIGNATURE Lisa Youngblood TITLE Regulatory Specialist DATE 05/19/2023

Type or print name Lisa Youngblood E-mail address: lisa\_youngblood@eogresources.com PHONE: 432-247-6331

**For State Use Only**

APPROVED BY: Dean R. McIlure TITLE Petroleum Engineer DATE 12/15/2023

Conditions of Approval (if any):

**District I**  
1625 N. French Dr., Hobbs, NM 88240  
Phone: (575) 393-6161 Fax: (575) 393-0720

**District II**  
811 S. First St., Artesia, NM 88210  
Phone: (575) 748-1283 Fax: (575) 748-9720

**District III**  
1000 Rio Brazos Road, Aztec, NM 87410  
Phone: (505) 334-6178 Fax: (505) 334-6170

**District IV**  
1220 S. St. Francis Dr., Santa Fe, NM 87505  
Phone: (505) 476-3460 Fax: (505) 476-3462

State of New Mexico  
Energy, Minerals & Natural Resources  
Department  
OIL CONSERVATION DIVISION  
1220 South St. Francis Dr.  
Santa Fe, NM 87505

**FORM C-102**  
**Revised August 1, 2011**  
**Submit one copy to appropriate**  
**District Office**

AMENDED REPORT

## WELL LOCATION AND ACREAGE DEDICATION PLAT

<sup>1</sup> API Number <b>30-025-51279</b>		<sup>2</sup> Pool Code <b>97903</b>		<sup>3</sup> Pool Name <b>WC-025 G-08 S253235G; Lower Bone Spring</b>					
<sup>4</sup> Property Code <b>329310</b>		<sup>5</sup> Property Name <b>RESOLUTE 12 FED COM</b>						<sup>6</sup> Well Number <b>510H</b>	
<sup>7</sup> OGRID No. <b>7377</b>		<sup>8</sup> Operator Name <b>EOG RESOURCES, INC.</b>						<sup>9</sup> Elevation <b>3496'</b>	
<sup>10</sup> Surface Location									
UL or lot no. <b>P</b>	Section <b>12</b>	Township <b>25-S</b>	Range <b>32-E</b>	Lot Idn <b>-</b>	Feet from the <b>310'</b>	North/South line <b>SOUTH</b>	Feet from the <b>547'</b>	East/West line <b>EAST</b>	County <b>LEA</b>
<sup>11</sup> Bottom Hole Location If Different From Surface									
UL or lot no. <b>1</b>	Section <b>1</b>	Township <b>25-S</b>	Range <b>32-E</b>	Lot Idn <b>-</b>	Feet from the <b>100'</b>	North/South line <b>NORTH</b>	Feet from the <b>660'</b>	East/West line <b>EAST</b>	County <b>LEA</b>
<sup>12</sup> Dedicated Acres <b>640.21</b>		<sup>13</sup> Joint or Infill		<sup>14</sup> Consolidation Code		<sup>15</sup> Order No.			

No allowable will be assigned to this completion until all interests have been consolidated or a non-standard unit has been approved by the division.

**NEW MEXICO EAST  
NAD 1983**

**SURFACE LOCATION (SHL)**  
 310' FSL - SEC. 12  
 547' FEL - SEC. 12  
 X=761619 Y=414924  
 LAT.: N 32.1387029  
 LONG.: W 103.6216560

**KICK OFF POINT (KOP)  
UPPER MOST PERF. (UMP)**  
 100' FSL - SEC. 12  
 1125' FEL - SEC. 12  
 X=761042 Y=414707  
 LAT.: N 32.1381174  
 LONG.: W 103.6235238

**FED PERF. POINT (FPP)**  
 0' FNL - SEC. 12  
 1125' FEL - SEC. 12  
 X=761012 Y=419886  
 LAT.: N 32.1523554  
 LONG.: W 103.6235099

**POINT OF INTERSECTION (PI)**  
 30' FSL - SEC. 1  
 1125' FEL - SEC. 1  
 X=761012 Y=419916  
 LAT.: N 32.1524378  
 LONG.: W 103.6235098

**LOWER MOST PERF. (LMP)  
BOTTOM HOLE LOCATION (BHL)**  
 100' FNL - SEC. 1  
 660' FEL - SEC. 1  
 X=761457 Y=425075  
 LAT.: N 32.1666099  
 LONG.: W 103.6219614

**17 OPERATOR CERTIFICATION**  
 I hereby certify that the information contained herein is true and complete to the best of my knowledge and belief, and that this organization either owns a working interest or unleased mineral interest in the land including the proposed bottom hole location or has a right to drill this well at this location pursuant to a contract with an owner of such a mineral or working interest, or to a voluntary pooling agreement or a compulsory pooling order heretofore entered by the division.

*Star L Harrell* 4/10/2023  
 Signature Date

**Star L Harrell**  
 Printed Name  
 star\_harrell@eogresources.com  
 E-mail Address

**18 SURVEYOR CERTIFICATION**  
 I hereby certify that the well location shown on this plat was plotted from field notes of actual surveys made by me or under my supervision, and that the same is true to the best of my belief.

08/04/2022  
 Date of Survey  
 Signature and Seal of Professional Surveyor

**Certificate Number**

**NEW MEXICO EAST  
NAD 1927**

<b>SURFACE LOCATION (SHL)</b> X=720433 Y=414966 LAT.: N 32.1385796 LONG.: W 103.6211815	<b>KICK OFF POINT (KOP) UPPER MOST PERF. (UMP)</b> X=719856 Y=414649 LAT.: N 32.1379931 LONG.: W 103.6230493
<b>FED PERF. POINT (FPP)</b> X=719827 Y=419826 LAT.: N 32.1522307 LONG.: W 103.6230346	<b>POINT OF INTERSECTION (PI)</b> X=719827 Y=419858 LAT.: N 32.1523135 LONG.: W 103.6230345
<b>LOWER MOST PERF. (LMP) BOTTOM HOLE LOCATION (BHL)</b> X=720272 Y=425017 LAT.: N 32.1664857 LONG.: W 103.6214854	

District I  
1625 N. French Dr., Hobbs, NM 88240  
Phone: (575) 393-6161 Fax: (575) 393-0720  
District II  
811 S. First St., Artesia, NM 88210  
Phone: (575) 748-1283 Fax: (575) 748-9720  
District III  
1000 Rio Brazos Road, Aztec, NM 87410  
Phone: (505) 334-6178 Fax: (505) 334-6170  
District IV  
1220 S. St. Francis Dr., Santa Fe, NM 87505  
Phone: (505) 476-3460 Fax: (505) 476-3462

State of New Mexico  
Energy, Minerals & Natural Resources  
Department  
OIL CONSERVATION DIVISION  
1220 South St. Francis Dr.  
Santa Fe, NM 87505

FORM C-102  
Revised August 1, 2011  
Submit one copy to appropriate  
District Office

☐ AMENDED REPORT

WELL LOCATION AND ACREAGE DEDICATION PLAT

<sup>1</sup> API Number <b>30-025-51223</b>		<sup>2</sup> Pool Code <b>97903</b>		<sup>3</sup> Pool Name <b>WC-025 G-08 S253235G; Lower Bone Spring</b>	
<sup>4</sup> Property Code		<sup>5</sup> Property Name <b>RESOLUTE 7 FED COM</b>			<sup>6</sup> Well Number <b>511H</b>
<sup>7</sup> OGRID No. <b>7377</b>		<sup>8</sup> Operator Name <b>EOG RESOURCES, INC.</b>			<sup>9</sup> Elevation <b>3492'</b>
<sup>10</sup> Surface Location					
UL or lot no. <b>4</b>	Section <b>7</b>	Township <b>25-S</b>	Range <b>33-E</b>	Lot Idn <b>-</b>	Feet from the <b>310'</b>
		North/South line <b>SOUTH</b>		Feet from the <b>755'</b>	East/West line <b>WEST</b>
				County <b>LEA</b>	
<sup>11</sup> Bottom Hole Location If Different From Surface					
UL or lot no. <b>1</b>	Section <b>1</b>	Township <b>25-S</b>	Range <b>32-E</b>	Lot Idn <b>-</b>	Feet from the <b>100'</b>
		North/South line <b>NORTH</b>		Feet from the <b>60'</b>	East/West line <b>EAST</b>
				County <b>LEA</b>	
<sup>12</sup> Dedicated Acres <b>640.21</b>		<sup>13</sup> Joint or Infill		<sup>14</sup> Consolidation Code	
				<sup>15</sup> Order No.	

No allowable will be assigned to this completion until all interests have been consolidated or a non-standard unit has been approved by the division.

	<p>NEW MEXICO EAST NAD 1983</p> <p><u>SURFACE LOCATION (SHL)</u></p> <p>310' FSL - SEC. 7 755' FWL - SEC. 7 X=762921 Y=414935 LAT.: N 32.1387102 LONG.: W 103.6174493</p> <p><u>KICK OFF POINT (KOP)</u></p> <p><u>UPPER MOST PERF. (UMP)</u></p> <p>100' FSL - SEC. 12 60' FEL - SEC. 12 X=762107 Y=414719 LAT.: N 32.1381326 LONG.: W 103.6200832</p> <p><u>FED PERF. POINT (FPP)</u></p> <p>0' FNL - SEC. 12 55' FEL - SEC. 12 X=762082 Y=419900 LAT.: N 32.1523745 LONG.: W 103.6200528</p> <p><u>LOWER MOST PERF. (LMP)</u></p> <p><u>BOTTOM HOLE LOCATION (BHL)</u></p> <p>100' FNL - SEC. 1 60' FEL - SEC. 1 X=762057 Y=425081 LAT.: N 32.1666154 LONG.: W 103.6200224</p>	<p><sup>17</sup>OPERATOR CERTIFICATION</p> <p>I hereby certify that the information contained herein is true and complete to the best of my knowledge and belief, and that this organization either owns a working interest or unleased mineral interest in the land including the proposed bottom hole location or has a right to drill this well at this location pursuant to a contract with an owner of such a mineral or working interest, or to a voluntary pooling agreement or a compulsory pooling order heretofore entered by the division.</p> <p><i>Star L Harrell</i> 4/10/2023 Signature Date</p> <p>Star L Harrell Printed Name</p> <p>star_harrell@eogresources.com E-mail Address</p> <p><sup>18</sup>SURVEYOR CERTIFICATION</p> <p>I hereby certify that the well location shown on this plat was plotted from field notes of actual surveys made by me or under my supervision, and that the same is true to the best of my belief.</p> <p>07/19/2019 Date of Survey</p> <p>Signature and Seal of Professional Surveyor</p> <p></p> <p>Certificate Number</p> <p>NEW MEXICO EAST NAD 1927</p> <p><u>SURFACE LOCATION (SHL)</u> X=721735 Y=414877 LAT.: N 32.1385828 LONG.: W 103.6169749</p> <p><u>KICK OFF POINT (KOP)</u> X=720921 Y=414861 LAT.: N 32.1380082 LONG.: W 103.6196088</p> <p><u>FED PERF. POINT (FPP)</u> X=720807 Y=419842 LAT.: N 32.1522499 LONG.: W 103.6195776</p> <p><u>LOWER MOST PERF. (LMP)</u> X=720812 Y=425023 LAT.: N 32.1664912 LONG.: W 103.6195464</p>
--	---	---

District I  
1625 N. French Dr., Hobbs, NM 88240  
Phone: (575) 393-6161 Fax: (575) 393-0720  
District II  
811 S. First St., Artesia, NM 88210  
Phone: (575) 748-1283 Fax: (575) 748-9720  
District III  
1000 Rio Brazos Road, Aztec, NM 87410  
Phone: (505) 334-6178 Fax: (505) 334-6170  
District IV  
1220 S. St. Francis Dr., Santa Fe, NM 87505  
Phone: (505) 476-3460 Fax: (505) 476-3462

State of New Mexico  
Energy, Minerals & Natural Resources  
Department  
OIL CONSERVATION DIVISION  
1220 South St. Francis Dr.  
Santa Fe, NM 87505

FORM C-102  
Revised August 1, 2011  
Submit one copy to appropriate  
District Office

☐ AMENDED REPORT

### WELL LOCATION AND ACREAGE DEDICATION PLAT

<sup>1</sup> API Number <b>30-025-51280</b>		<sup>2</sup> Pool Code <b>97903</b>		<sup>3</sup> Pool Name <b>WC-025 G-08 S253235G; Lower Bone Spring</b>	
<sup>4</sup> Property Code <b>329310</b>		<sup>5</sup> Property Name <b>RESOLUTE 12 FED COM</b>			<sup>6</sup> Well Number <b>517H</b>
<sup>7</sup> OGRID No. <b>7377</b>		<sup>8</sup> Operator Name <b>EOG RESOURCES, INC.</b>			<sup>9</sup> Elevation <b>3503'</b>
<sup>10</sup> Surface Location					
UL or lot no. <b>0</b>	Section <b>12</b>	Township <b>25-S</b>	Range <b>32-E</b>	Lot Idn <b>-</b>	Feet from the <b>344'</b>
		North/South line <b>SOUTH</b>		Feet from the <b>1538'</b>	East/West line <b>EAST</b>
				County <b>LEA</b>	
<sup>11</sup> Bottom Hole Location If Different From Surface					
UL or lot no. <b>2</b>	Section <b>1</b>	Township <b>25-S</b>	Range <b>32-E</b>	Lot Idn <b>-</b>	Feet from the <b>100'</b>
		North/South line <b>NORTH</b>		Feet from the <b>2346'</b>	East/West line <b>EAST</b>
				County <b>LEA</b>	
<sup>12</sup> Dedicated Acres <b>640.21</b>		<sup>13</sup> Joint or Infill		<sup>14</sup> Consolidation Code	
				<sup>15</sup> Order No.	

No allowable will be assigned to this completion until all interests have been consolidated or a non-standard unit has been approved by the division.

	<p><b>NEW MEXICO EAST NAD 1983</b></p> <p><u>SURFACE LOCATION (SHL)</u> 344' FSL - SEC. 12 1538' FEL - SEC. 12 X=760628 Y=414946 LAT.: N 32.1387826 LONG.: W 103.6248572</p> <p><u>KICK OFF POINT (KOP)</u> <u>UPPER MOST PERF. (UMP)</u> 100' FSL - SEC. 12 2323' FEL - SEC. 12 X=759844 Y=414693 LAT.: N 32.1381002 LONG.: W 103.6273926</p> <p><u>FED PERF. POINT (FPP)</u> 0' FNL - SEC. 12 2329' FEL - SEC. 12 X=759808 Y=419871 LAT.: N 32.1523336 LONG.: W 103.6274009</p> <p><u>LOWER MOST PERF. (LMP)</u> <u>BOTTOM HOLE LOCATION (BHL)</u> 100' FNL - SEC. 1 2346' FEL - SEC. 1 X=759771 Y=425058 LAT.: N 32.1665941 LONG.: W 103.6274091</p>	<p><b>17 OPERATOR CERTIFICATION</b> I hereby certify that the information contained herein is true and complete to the best of my knowledge and belief, and that this organization either owns a working interest or unleased mineral interest in the land including the proposed bottom hole location or has a right to drill this well at this location pursuant to a contract with an owner of such a mineral or working interest, or to a voluntary pooling agreement or a compulsory pooling order heretofore entered by the division.</p> <p><i>Star L Harrell</i> 4/10/2023 Signature Date</p> <p><b>Star L Harrell</b> Printed Name</p> <p>star_harrell@eogresources.com E-mail Address</p>	
	<p><b>18 SURVEYOR CERTIFICATION</b> I hereby certify that the well location shown on this plat was plotted from field notes of actual surveys made by me or under my supervision, and that the same is true to the best of my belief.</p> <p><b>08/03/2022</b> Date of Survey</p> <p><i>[Signature]</i> Signature and Seal of Professional Surveyor</p> <p> Certificate Number</p>	<p><b>NEW MEXICO EAST NAD 1927</b></p> <p><u>SURFACE LOCATION (SHL)</u> X=719442 Y=414888 LAT.: N 32.1366582 LONG.: W 103.6243827</p> <p><u>KICK OFF POINT (KOP)</u> <u>UPPER MOST PERF. (UMP)</u> X=718630 Y=414635 LAT.: N 32.1379759 LONG.: W 103.6269180</p> <p><u>FED PERF. POINT (FPP)</u> X=718623 Y=419812 LAT.: N 32.1522094 LONG.: W 103.6269255</p> <p><u>LOWER MOST PERF. (LMP)</u> <u>BOTTOM HOLE LOCATION (BHL)</u> X=718586 Y=425000 LAT.: N 32.1664700 LONG.: W 103.6269329</p>	

District I  
1625 N. French Dr., Hobbs, NM 88240  
Phone: (575) 393-6161 Fax: (575) 393-0720  
District II  
811 S. First St., Artesia, NM 88210  
Phone: (575) 748-1283 Fax: (575) 748-9720  
District III  
1000 Rio Brazos Road, Aztec, NM 87410  
Phone: (505) 334-6178 Fax: (505) 334-6170  
District IV  
1220 S. St. Francis Dr., Santa Fe, NM 87505  
Phone: (505) 476-3460 Fax: (505) 476-3462

State of New Mexico  
Energy, Minerals & Natural Resources  
Department  
OIL CONSERVATION DIVISION  
1220 South St. Francis Dr.  
Santa Fe, NM 87505

FORM C-102  
Revised August 1, 2011  
Submit one copy to appropriate  
District Office

☐ AMENDED REPORT

WELL LOCATION AND ACREAGE DEDICATION PLAT

<sup>1</sup> API Number <b>30-025-51282</b>		<sup>2</sup> Pool Code <b>97903</b>		<sup>3</sup> Pool Name <b>WC-025 G-08 S253235G; Lower Bone Spring</b>	
<sup>4</sup> Property Code <b>329310</b>		<sup>5</sup> Property Name <b>RESOLUTE 12 FED COM</b>			<sup>6</sup> Well Number <b>519H</b>
<sup>7</sup> OGRID No. <b>7377</b>		<sup>8</sup> Operator Name <b>EOG RESOURCES, INC.</b>			<sup>9</sup> Elevation <b>3495'</b>
<sup>10</sup> Surface Location					
UL or lot no. <b>P</b>	Section <b>12</b>	Township <b>25-S</b>	Range <b>32-E</b>	Lot Idn <b>-</b>	Feet from the <b>310'</b>
				North/South line <b>SOUTH</b>	Feet from the <b>567'</b>
				East/West line <b>EAST</b>	County <b>LEA</b>
<sup>11</sup> Bottom Hole Location If Different From Surface					
UL or lot no. <b>1</b>	Section <b>1</b>	Township <b>25-S</b>	Range <b>32-E</b>	Lot Idn <b>-</b>	Feet from the <b>100'</b>
				North/South line <b>NORTH</b>	Feet from the <b>1220'</b>
				East/West line <b>EAST</b>	County <b>LEA</b>
<sup>12</sup> Dedicated Acres <b>640.21</b>		<sup>13</sup> Joint or Infill		<sup>14</sup> Consolidation Code	
				<sup>15</sup> Order No.	

No allowable will be assigned to this completion until all interests have been consolidated or a non-standard unit has been approved by the division.

	<p>NEW MEXICO EAST NAD 1983</p> <p><u>SURFACE LOCATION (SHL)</u> 310' FSL - SEC. 12 567' FEL - SEC. 12 X=761599 Y=414923 LAT.: N 32.1387027 LONG.: W 103.6217206</p> <p><u>KICK OFF POINT (KOP)</u> UPPER MOST PERF. (UMP) 100' FSL - SEC. 12 1385' FEL - SEC. 12 X=760782 Y=414704 LAT.: N 32.1381137 LONG.: W 103.6243638</p> <p><u>FED PERF. POINT (FPP)</u> 0' FNL - SEC. 12 1385' FEL - SEC. 12 X=760752 Y=419883 LAT.: N 32.1523507 LONG.: W 103.6243500</p> <p><u>POINT OF INTERSECTION (PI)</u> 30' FSL - SEC. 1 1385' FEL - SEC. 1 X=760752 Y=419913 LAT.: N 32.1524331 LONG.: W 103.6243499</p> <p><u>LOWER MOST PERF. (LMP)</u> <u>BOTTOM HOLE LOCATION (BHL)</u> 100' FNL - SEC. 1 1220' FEL - SEC. 1 X=760897 Y=425070 LAT.: N 32.1666046 LONG.: W 103.6237712</p>	<p><sup>17</sup>OPERATOR CERTIFICATION I hereby certify that the information contained herein is true and complete to the best of my knowledge and belief, and that this organization either owns a working interest or unleased mineral interest in the land including the proposed bottom hole location or has a right to drill this well at this location pursuant to a contract with an owner of such a mineral or working interest, or to a voluntary pooling agreement or a compulsory pooling order heretofore entered by the division.</p> <p><i>Star L Harrell</i> 4/10/2023 Signature Date</p> <p>Star L Harrell Printed Name</p> <p>star_harrell@eogresources.com E-mail Address</p> <p><sup>18</sup>SURVEYOR CERTIFICATION I hereby certify that the well location shown on this plat was plotted from field notes of actual surveys made by me or under my supervision, and that the same is true to the best of my belief.</p> <p>08/03/2022 Date of Survey</p> <p>Signature and Seal of Professional Surveyor</p> <p> Certificate Number</p>
	<p>NEW MEXICO EAST NAD 1927</p> <p><u>SURFACE LOCATION (SHL)</u> X=720413 Y=414865 LAT.: N 32.1365753 LONG.: W 103.6212462</p> <p><u>KICK OFF POINT (KOP)</u> UPPER MOST PERF. (UMP) X=719596 Y=414646 LAT.: N 32.1379893 LONG.: W 103.6238893</p> <p><u>FED PERF. POINT (FPP)</u> X=719567 Y=419825 LAT.: N 32.1522280 LONG.: W 103.6238746</p> <p><u>POINT OF INTERSECTION (PI)</u> X=719567 Y=419855 LAT.: N 32.1523089 LONG.: W 103.6238746</p> <p><u>LOWER MOST PERF. (LMP)</u> <u>BOTTOM HOLE LOCATION (BHL)</u> X=719712 Y=426011 LAT.: N 32.1664804 LONG.: W 103.6232950</p>	



District I  
1625 N. French Dr., Hobbs, NM 88240  
Phone: (575) 393-6161 Fax: (575) 393-0720  
District II  
811 S. First St., Artesia, NM 88210  
Phone: (575) 748-1283 Fax: (575) 748-9720  
District III  
1000 Rio Brazos Road, Aztec, NM 87410  
Phone: (505) 334-6178 Fax: (505) 334-6170  
District IV  
1220 S. St. Francis Dr., Santa Fe, NM 87505  
Phone: (505) 476-3460 Fax: (505) 476-3462

State of New Mexico  
Energy, Minerals & Natural Resources  
Department  
OIL CONSERVATION DIVISION  
1220 South St. Francis Dr.  
Santa Fe, NM 87505

FORM C-102  
Revised August 1, 2011  
Submit one copy to appropriate  
District Office

☐ AMENDED REPORT

### WELL LOCATION AND ACREAGE DEDICATION PLAT

<sup>1</sup> API Number <b>30-025-51281</b>	<sup>2</sup> Pool Code <b>97903</b>	<sup>3</sup> Pool Name <b>WC-025 G-08 S253235G; Lower Bone Spring</b>
<sup>4</sup> Property Code <b>329310</b>	<sup>5</sup> Property Name <b>RESOLUTE 12 FED COM</b>	<sup>6</sup> Well Number <b>581H</b>
<sup>7</sup> OGRID No. <b>7377</b>	<sup>8</sup> Operator Name <b>EOG RESOURCES, INC.</b>	<sup>9</sup> Elevation <b>3503'</b>

#### <sup>10</sup>Surface Location

UL or lot no.	Section	Township	Range	Lot Idn	Feet from the	North/South line	Feet from the	East/West line	County
<b>0</b>	<b>12</b>	<b>25-S</b>	<b>32-E</b>	<b>-</b>	<b>344'</b>	<b>SOUTH</b>	<b>1518'</b>	<b>EAST</b>	<b>LEA</b>

#### <sup>11</sup>Bottom Hole Location If Different From Surface

UL or lot no.	Section	Township	Range	Lot Idn	Feet from the	North/South line	Feet from the	East/West line	County
<b>2</b>	<b>1</b>	<b>25-S</b>	<b>32-E</b>	<b>-</b>	<b>100'</b>	<b>NORTH</b>	<b>2150'</b>	<b>EAST</b>	<b>LEA</b>

<sup>12</sup> Dedicated Acres <b>640.21</b>	<sup>13</sup> Joint or Infill	<sup>14</sup> Consolidation Code	<sup>15</sup> Order No.
--	-------------------------------	----------------------------------	-------------------------

No allowable will be assigned to this completion until all interests have been consolidated or a non-standard unit has been approved by the division.

	<p>NEW MEXICO EAST NAD 1983</p> <p><u>SURFACE LOCATION (SHL)</u></p> <p>344' FSL - SEC. 12 1518' FEL - SEC. 12 X=760648 Y=414946 LAT.: N 32.1387828 LONG.: W 103.6247926</p> <p><u>KICK OFF POINT (KOP)</u> <u>UPPER MOST PERF. (UMP)</u></p> <p>100' FSL - SEC. 12 2150' FEL - SEC. 12 X=760017 Y=414695 LAT.: N 32.1381027 LONG.: W 103.6268352</p> <p><u>FED PERF. POINT (FPP)</u></p> <p>0' FNL - SEC. 12 2145' FEL - SEC. 12 X=759992 Y=419873 LAT.: N 32.1523370 LONG.: W 103.6268059</p> <p><u>LOWER MOST PERF. (LMP)</u> <u>BOTTOM HOLE LOCATION (BHL)</u></p> <p>100' FNL - SEC. 1 2150' FEL - SEC. 1 X=759967 Y=425060 LAT.: N 32.1665960 LONG.: W 103.6267766</p>	<p><sup>17</sup>OPERATOR CERTIFICATION</p> <p>I hereby certify that the information contained herein is true and complete to the best of my knowledge and belief, and that this organization either owns a working interest or unleased mineral interest in the land including the proposed bottom hole location or has a right to drill this well at this location pursuant to a contract with an owner of such a mineral or working interest, or to a voluntary pooling agreement or a compulsory pooling order heretofore entered by the division.</p> <p><i>Star L Harrell</i> 4/10/2023 Signature Date</p> <p>Star L Harrell Printed Name</p> <p>star_harrell@eogresources.com E-mail Address</p> <p><sup>18</sup>SURVEYOR CERTIFICATION</p> <p>I hereby certify that the well location shown on this plat was plotted from field notes of actual surveys made by me or under my supervision, and that the same is true to the best of my belief.</p> <p>08/03/2022 Date of Survey</p> <p>Signature and Seal of Professional Surveyor</p> <p> Certificate Number</p> <p>NEW MEXICO EAST NAD 1927</p> <p><u>SURFACE LOCATION (SHL)</u> X=719402 Y=414868 LAT.: N 32.1395595 LONG.: W 103.6243181</p> <p><u>KICK OFF POINT (KOP)</u> <u>UPPER MOST PERF. (UMP)</u> X=718831 Y=414507 LAT.: N 32.1379783 LONG.: W 103.6263606</p> <p><u>FED PERF. POINT (FPP)</u> X=718807 Y=419815 LAT.: N 32.1522127 LONG.: W 103.6263305</p> <p><u>LOWER MOST PERF. (LMP)</u> <u>BOTTOM HOLE LOCATION (BHL)</u> X=718762 Y=425002 LAT.: N 32.1664718 LONG.: W 103.6263004</p>
--	--	--

District I  
1625 N. French Dr., Hobbs, NM 88240  
Phone: (575) 393-6161 Fax: (575) 393-0720  
District II  
811 S. First St., Artesia, NM 88210  
Phone: (575) 748-1283 Fax: (575) 748-9720  
District III  
1000 Rio Brazos Road, Aztec, NM 87410  
Phone: (505) 334-6178 Fax: (505) 334-6170  
District IV  
1220 S. St. Francis Dr., Santa Fe, NM 87505  
Phone: (505) 476-3460 Fax: (505) 476-3462

State of New Mexico  
Energy, Minerals & Natural Resources  
Department  
OIL CONSERVATION DIVISION  
1220 South St. Francis Dr.  
Santa Fe, NM 87505

FORM C-102  
Revised August 1, 2011  
Submit one copy to appropriate  
District Office

☐ AMENDED REPORT

### WELL LOCATION AND ACREAGE DEDICATION PLAT

<sup>1</sup> API Number <b>30-025-47595</b>	<sup>2</sup> Pool Code <b>97903</b>	<sup>3</sup> Pool Name <b>WC-025 G-08 S253235G; Lower Bone Spring</b>
<sup>4</sup> Property Code <b>329310</b>	<sup>5</sup> Property Name <b>RESOLUTE 12 FED COM</b>	<sup>6</sup> Well Number <b>582H</b>
<sup>7</sup> OGRID No. <b>7377</b>	<sup>8</sup> Operator Name <b>EOG RESOURCES, INC.</b>	<sup>9</sup> Elevation <b>3495'</b>

#### <sup>10</sup>Surface Location

UL or lot no.	Section	Township	Range	Lot Idn	Feet from the	North/South line	Feet from the	East/West line	County
<b>P</b>	<b>12</b>	<b>25-S</b>	<b>32-E</b>	<b>-</b>	<b>310'</b>	<b>SOUTH</b>	<b>527'</b>	<b>EAST</b>	<b>LEA</b>

#### <sup>11</sup>Bottom Hole Location If Different From Surface

UL or lot no.	Section	Township	Range	Lot Idn	Feet from the	North/South line	Feet from the	East/West line	County
<b>1</b>	<b>1</b>	<b>25-S</b>	<b>32-E</b>	<b>-</b>	<b>100'</b>	<b>NORTH</b>	<b>930'</b>	<b>EAST</b>	<b>LEA</b>

<sup>12</sup> Dedicated Acres <b>640.21</b>	<sup>13</sup> Joint or Infill	<sup>14</sup> Consolidation Code	<sup>15</sup> Order No.
--	-------------------------------	----------------------------------	-------------------------

No allowable will be assigned to this completion until all interests have been consolidated or a non-standard unit has been approved by the division.

	<p>NEW MEXICO EAST NAD 1983</p> <p><u>SURFACE LOCATION (SHL)</u></p> <p>310' FSL - SEC. 12 527' FEL - SEC. 12 X=761639 Y=414924 LAT.: N 32.1387032 LONG.: W 103.6215914</p> <p><u>KICK OFF POINT (KOP)</u> <u>UPPER MOST PERF. (UMP)</u></p> <p>100' FSL - SEC. 12 930' FEL - SEC. 12 X=761237 Y=414709 LAT.: N 32.1381202 LONG.: W 103.6228938</p> <p><u>FED PERF. POINT (FPP)</u></p> <p>0' FNL - SEC. 12 925' FEL - SEC. 12 X=761212 Y=419889 LAT.: N 32.1523589 LONG.: W 103.6228639</p> <p><u>LOWER MOST PERF. (LMP)</u> <u>BOTTOM HOLE LOCATION (BHL)</u></p> <p>100' FNL - SEC. 1 930' FEL - SEC. 1 X=761187 Y=425073 LAT.: N 32.1666076 LONG.: W 103.6228340</p>	<p><sup>17</sup>OPERATOR CERTIFICATION</p> <p>I hereby certify that the information contained herein is true and complete to the best of my knowledge and belief, and that this organization either owns a working interest or unleased mineral interest in the land including the proposed bottom hole location or has a right to drill this well at this location pursuant to a contract with an owner of such a mineral or working interest, or to a voluntary pooling agreement or a compulsory pooling order heretofore entered by the division.</p> <p><i>Star L. Harrell</i> 4/10/2023 Signature Date</p> <p>Star L Harrell Printed Name</p> <p>star_harrell@eogresources.com E-mail Address</p>
	<p><sup>18</sup>SURVEYOR CERTIFICATION</p> <p>I hereby certify that the well location shown on this plat was plotted from field notes of actual surveys made by me or under my supervision, and that the same is true to the best of my belief.</p> <p>08/04/2022 Date of Survey</p> <p>Signature and Seal of Professional Surveyor</p>	<p> </p>
	<p>Certificate Number</p>	<p>NEW MEXICO EAST NAD 1927</p>
	<p><u>SURFACE LOCATION (SHL)</u></p> <p>X=720453 Y=414606 LAT.: N 32.1365788 LONG.: W 103.6211169</p> <p><u>KICK OFF POINT (KOP)</u> <u>UPPER MOST PERF. (UMP)</u></p> <p>X=720051 Y=414651 LAT.: N 32.1379958 LONG.: W 103.6224194</p> <p><u>FED PERF. POINT (FPP)</u></p> <p>X=720027 Y=419831 LAT.: N 32.1522343 LONG.: W 103.6223887</p> <p><u>LOWER MOST PERF. (LMP)</u> <u>BOTTOM HOLE LOCATION (BHL)</u></p> <p>X=720002 Y=425014 LAT.: N 32.1664834 LONG.: W 103.6223579</p>	

District I  
1625 N. French Dr., Hobbs, NM 88240  
Phone: (575) 393-6161 Fax: (575) 393-0720  
District II  
811 S. First St., Artesia, NM 88210  
Phone: (575) 748-1283 Fax: (575) 748-9720  
District III  
1000 Rio Brazos Road, Aztec, NM 87410  
Phone: (505) 334-6178 Fax: (505) 334-6170  
District IV  
1220 S. St. Francis Dr., Santa Fe, NM 87505  
Phone: (505) 476-3460 Fax: (505) 476-3462

State of New Mexico  
Energy, Minerals & Natural Resources  
Department  
OIL CONSERVATION DIVISION  
1220 South St. Francis Dr.  
Santa Fe, NM 87505

FORM C-102

Revised August 1, 2011

Submit one copy to appropriate

District Office

☐ AMENDED REPORT

## WELL LOCATION AND ACREAGE DEDICATION PLAT

<sup>1</sup> API Number <b>30-025-51458</b>	<sup>2</sup> Pool Code <b>97903</b>	<sup>3</sup> Pool Name <b>WC-025 G-08 S2532356; LOWER BONE SPRING</b>
<sup>4</sup> Property Code <b>329310</b>	<sup>5</sup> Property Name <b>RESOLUTE 12 FED COM</b>	<sup>6</sup> Well Number <b>206H</b>
<sup>7</sup> OGRID No. <b>7377</b>	<sup>8</sup> Operator Name <b>EOG RESOURCES, INC.</b>	<sup>9</sup> Elevation <b>3503'</b>

<sup>10</sup>Surface Location

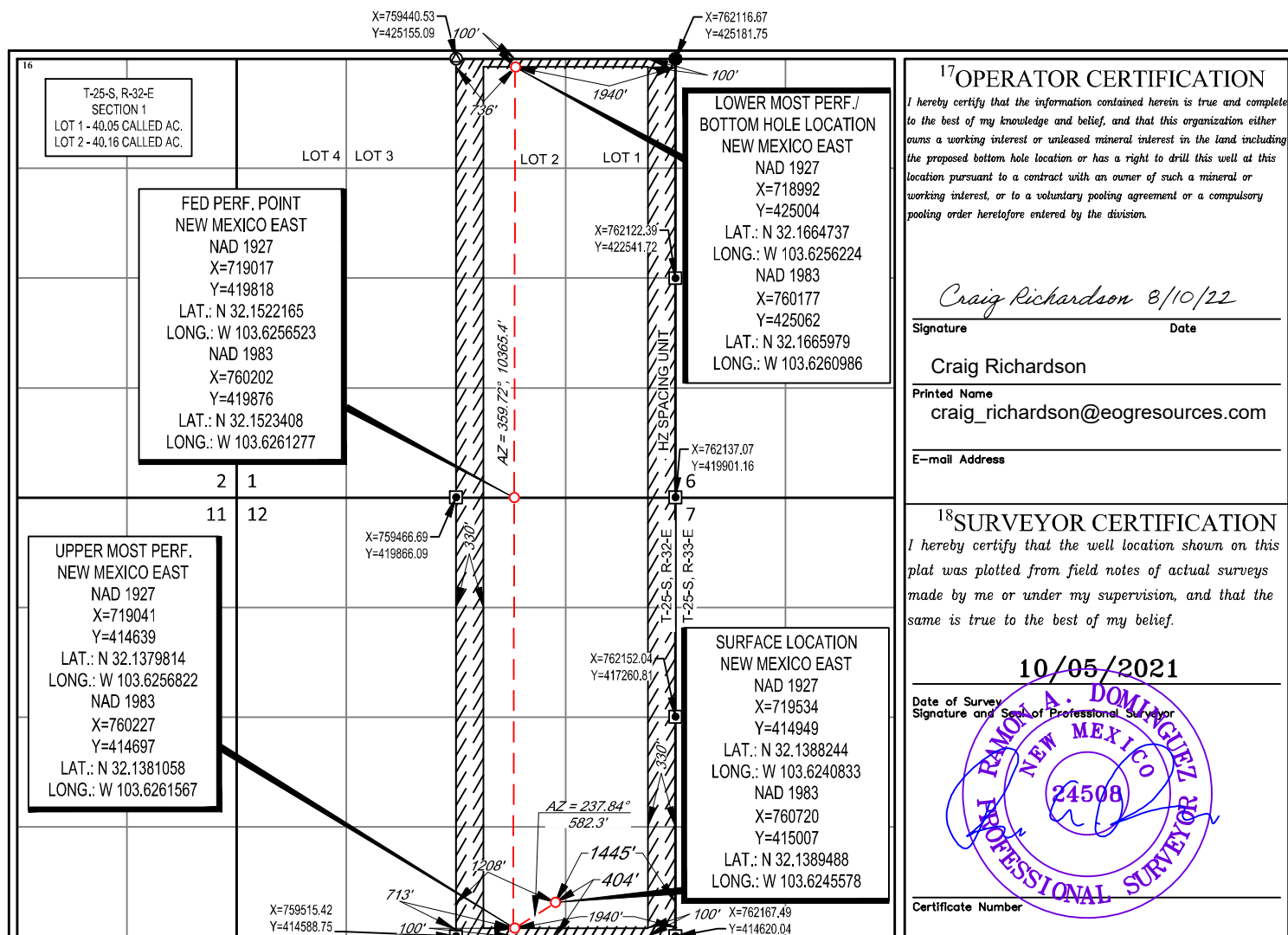
UL or lot no.	Section	Township	Range	Lot Idn	Feet from the	North/South line	Feet from the	East/West line	County
<b>0</b>	<b>12</b>	<b>25-S</b>	<b>32-E</b>	<b>-</b>	<b>404'</b>	<b>SOUTH</b>	<b>1445'</b>	<b>EAST</b>	<b>LEA</b>

<sup>11</sup>Bottom Hole Location If Different From Surface

UL or lot no.	Section	Township	Range	Lot Idn	Feet from the	North/South line	Feet from the	East/West line	County
<b>1</b>	<b>1</b>	<b>25-S</b>	<b>32-E</b>	<b>-</b>	<b>100'</b>	<b>NORTH</b>	<b>1940'</b>	<b>EAST</b>	<b>LEA</b>

<sup>12</sup> Dedicated Acres <b>640.21</b>	<sup>13</sup> Joint or Infill	<sup>14</sup> Consolidation Code	<sup>15</sup> Order No.
--	-------------------------------	----------------------------------	-------------------------

No allowable will be assigned to this completion until all interests have been consolidated or a non-standard unit has been approved by the division.





**District I**  
1625 N. French Dr., Hobbs, NM 88240  
Phone:(575) 393-6161 Fax:(575) 393-0720  
**District II**  
811 S. First St., Artesia, NM 88210  
Phone:(575) 748-1283 Fax:(575) 748-9720  
**District III**  
1000 Rio Brazos Rd., Aztec, NM 87410  
Phone:(505) 334-6178 Fax:(505) 334-6170  
**District IV**  
1220 S. St Francis Dr., Santa Fe, NM 87505  
Phone:(505) 476-3470 Fax:(505) 476-3462

**State of New Mexico**  
**Energy, Minerals and Natural Resources**  
**Oil Conservation Division**  
**1220 S. St Francis Dr.**  
**Santa Fe, NM 87505**

CONDITIONS

Action 286543

CONDITIONS

Operator: EOG RESOURCES INC P.O. Box 2267 Midland, TX 79702	OGRID: 7377
	Action Number: 286543
	Action Type: [C-103] Sub. General Sundry (C-103Z)

CONDITIONS

Created By	Condition	Condition Date
dmcclure	Please review the content of the order to ensure you are familiar with the authorities granted and any conditions of approval. If you have any questions regarding this matter, please contact me.	12/15/2023
dmcclure	30-025-47595 RESOLUTE 12 FEDERAL COM #582H already approved to be included in the commingling project authorized by PLC-778	12/15/2023