



Test Report

Start Date: Monday, February 27th, 2023, 1:58 PM MST
End Date: Tuesday, February 28th, 2023, 10:45 AM MST
Device: VB100-0040
Well Licensee: 30-015-02142
Well Name: Artesia Metex 043
UWI: 30-015-02142
Well License Number: 30-015-02142
Surface Location: State of NM
Bottom Hole Location: Unknown

Test Operator: Sean O. Jacobson
Authorized By: State of NM
Test Reason: IJJA Pre Plugging
Scope Of Work: 12 Hour
AFE Number: 52100-0000072986
GPS: 32.72102,-104.21356
Notes: GTG
Prepared By: Curtis Shuck - QMS

Flow Test

Average Flowrate

0.0028

m3/d

Average Flow
Temperature**15.4**

°C

Average Flow
Pressure**3.2**

kPag

Flow Duration

20.8

hours

Methane Flow
Mass**0.0059**

gm/hour

Methane
Concentration: 7.05 %

Pressure Test

Maximum Shut-In Pressure

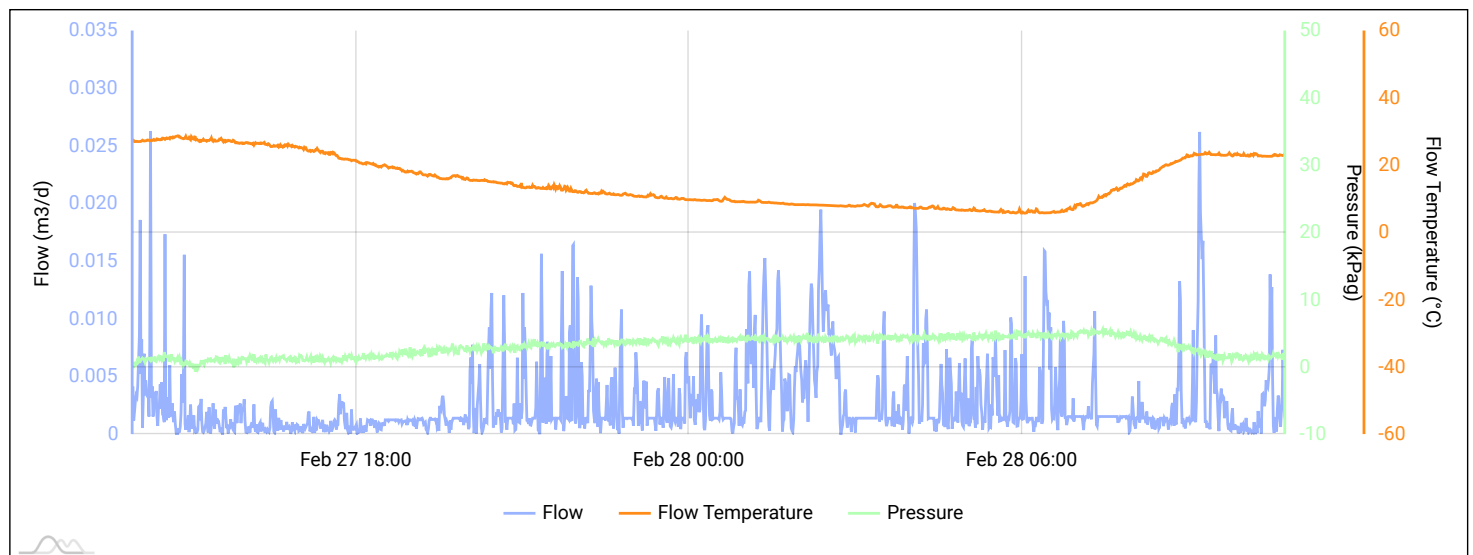
--

Shut-in Pressure Duration

0.0

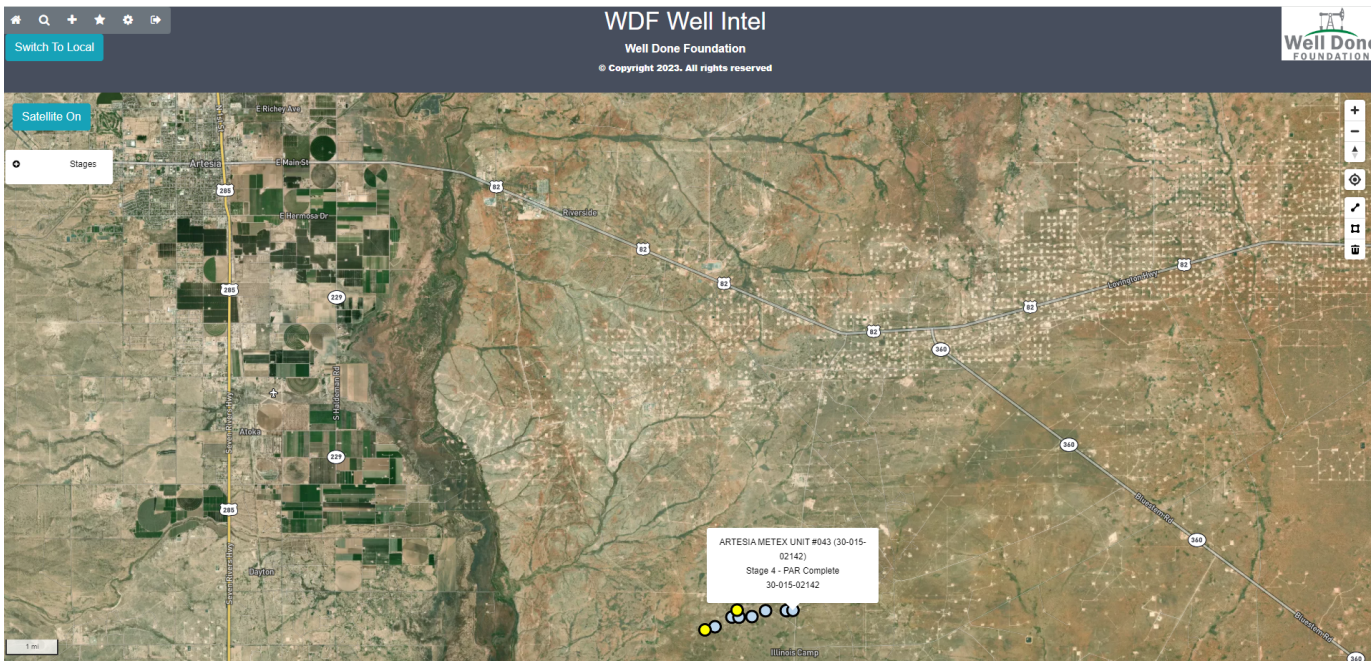
hours

Flow/Pressure/Temperature Timeseries



Field Notes

#	Date	Note
1	2023-06-27	ces: Arrive on location with WDF Measure 1. Inspect cement. Perform Field Gas Analysis. Collect Gas Sample for Laboratory analysis. Take site photos. WILDCAT OUT!
2	2023-03-12	Arrived 11:18am 3/12/2023. Rigged down flow test. SP VB #20
3	2023-03-11	Arrived 12:46pm 3/11/2023. Rigged up flow test. SP VB #20
4	2023-02-28	Arrived 10:45am 2/28/2023. Rigged down flow test.
5	2023-02-27	Arrived 1:30pm 2/27/2023. Rigged up Ventbuster #40 for flow testing.



February 27, 2023

	Atmospheric conditions and temperature °F	RealFeel °F	Atmospheric pressure inHg	Wind speed mph	Humidity
Night	+39°	+32°	26.2	↖ NW 12.1	24%
Morning	+34°	+28°	26.2	↖ NW 6.3	36%
Day	+63°	+63°	26.3	➡ W 16.1	9%
Evening	+59°	+59°	26.2	↙ SW 15.2	11%

February 28, 2023

	Atmospheric conditions and temperature °F	RealFeel °F	Atmospheric pressure inHg	Wind speed mph	Humidity
Night	+48°	+45°	26.2	↙ SW 9.2	18%
Morning	+43°	+37°	26.1	↙ SW 8.1	29%
Day	+70°	+70°	26.2	↙ SW 20.4	9%
Evening	+63°	+63°	26.1	↙ SW 10.5	10%



www.permianls.com
575.397.3713 2609 W Marland Hobbs NM 88240

C6+ Gas Analysis Report

16148G	Artesia Meter #43	Artesia Meter #43	
Sample Point Code	Sample Point Name	Sample Point Location	
Laboratory Services	2023064927	Tedlar Bag	SOJ - Spot
Source Laboratory	Lab File No	Container Identity	Sampler
USA	USA	USA	New Mexico
District	Area Name	Field Name	Facility Name
Feb 28, 2023 10:45	Feb 28, 2023 10:45	Mar 2, 2023 07:29	Mar 6, 2023
Date Sampled	Date Effective	Date Received	Date Reported
Luis			
Ambient Temp (°F)	Flow Rate (Mcf)	Analyst	Press PSI @ Temp °F Source Conditions
Well Done Foundation		NG	
Operator		Lab Source Description	

Component	Normalized Mol %	Un-Normalized Mol %	GPM
H2S (H2S)	0.0000	0	
Nitrogen (N2)	98.2110	98.20983	
CO2 (CO2)	0.4110	0.41073	
Methane (C1)	0.7050	0.70461	
Ethane (C2)	0.1520	0.15219	0.0410
Propane (C3)	0.1050	0.10543	0.0290
I-Butane (IC4)	0.0140	0.01441	0.0050
N-Butane (NC4)	0.0380	0.03827	0.0120
I-Pentane (IC5)	0.0170	0.01739	0.0060
N-Pentane (NC5)	0.0260	0.02623	0.0090
Hexanes Plus (C6+)	0.3210	0.3209	0.1390
TOTAL	100.0000	100.0000	0.2410

Method(s): Gas C6+ - GPA 2261, Extended Gas - GPA 2286, Calculations - GPA 2172

Analyzer Information			
Device Type:	Gas Chromatograph	Device Make:	Shimadzu
Device Model:	GC-2014	Last Cal Date:	Feb 13, 2023

Gross Heating Values (Real, BTU/ft³)			
14.696 PSI @ 60.00 Å°F		14.73 PSI @ 60.00 Å°F	
Dry	Saturated	Dry	Saturated
32.4	32.7	32.5	32.8

Calculated Total Sample Properties	
GPA2145-16 *Calculated at Contract Conditions	
Relative Density Real	Relative Density Ideal
0.9756	0.9756
Molecular Weight	
28.2586	

C6+ Group Properties		
Assumed Composition		
C6 - 60.000%	C7 - 30.000%	C8 - 10.000%

Field H2S
0 PPM

PROTREND STATUS: Passed By Validator on Mar 7, 2023
DATA SOURCE: Imported

PASSED BY VALIDATOR REASON:
Close enough to be considered reasonable.

VALIDATOR:
Brooke Rush
VALIDATOR COMMENTS:
OK

Source	Date	Notes
Brooke Rush	Mar 7, 2023 2:19 pm	Methane = 7,050 PPM

District I
1625 N. French Dr., Hobbs, NM 88240
Phone:(575) 393-6161 Fax:(575) 393-0720
District II
811 S. First St., Artesia, NM 88210
Phone:(575) 748-1283 Fax:(575) 748-9720
District III
1000 Rio Brazos Rd., Aztec, NM 87410
Phone:(505) 334-6178 Fax:(505) 334-6170
District IV
1220 S. St Francis Dr., Santa Fe, NM 87505
Phone:(505) 476-3470 Fax:(505) 476-3462

State of New Mexico
Energy, Minerals and Natural Resources
Oil Conservation Division
1220 S. St Francis Dr.
Santa Fe, NM 87505

DEFINITIONS

Action 295385

DEFINITIONS

Operator: CANYON E & P COMPANY 251 O'Connor Ridge Blvd. Irving, TX 75038	OGRID: 269864
	Action Number: 295385
	Action Type: [UF-OMA] Pre-Plug Methane Monitoring (UF-OMA-MMA)

DEFINITIONS

The Orphan Well Mitigation Activity (OMA) forms are a subset of the OCD's forms exclusively designed for activities related to State of New Mexico's contracted plugging and reclamation activities. Specifically, these forms are used for orphan wells or associated facilities which are in a "Reclamation Fund Approved" status. This status represents wells or facilities where the OCD has acquired a hearing order allowing the OCD to perform plugging or reclamation on wells and associated facilities that no longer have a viable operator to perform the necessary work. These forms are not to be utilized for any other purpose.

District I

1625 N. French Dr., Hobbs, NM 88240
Phone:(575) 393-6161 Fax:(575) 393-0720

District II

811 S. First St., Artesia, NM 88210
Phone:(575) 748-1283 Fax:(575) 748-9720

District III

1000 Rio Brazos Rd., Aztec, NM 87410
Phone:(505) 334-6178 Fax:(505) 334-6170

District IV

1220 S. St Francis Dr., Santa Fe, NM 87505
Phone:(505) 476-3470 Fax:(505) 476-3462

State of New Mexico
Energy, Minerals and Natural Resources
Oil Conservation Division
1220 S. St Francis Dr.
Santa Fe, NM 87505

QUESTIONS

Action 295385

QUESTIONS

Operator: CANYON E & P COMPANY 251 O'Connor Ridge Blvd. Irving, TX 75038	OGRID: 269864
	Action Number: 295385
	Action Type: [UF-OMA] Pre-Plug Methane Monitoring (UF-OMA-MMA)

QUESTIONS

Prerequisites	
[OGRID] Well Operator	[269864] CANYON E & P COMPANY
[API] Well Name and Number	[30-015-02142] ARTESIA METEX UNIT #043
Well Status	Plugged (not released)

Monitoring Event Information*Please answer all the questions in this group.*

Reason For Filing	Pre-Plug Methane Monitoring
Date of monitoring	02/27/2023
Latitude	32.72102
Longitude	-104.21356

Monitoring Event Details*Please answer all the questions in this group.*

Flow rate in cubic meters per day (m³/day)	0.00
Test duration in hours (hr)	20.9
Average flow temperature in degrees Celsius (°C)	15.4
Average gauge flow pressure in kilopascals (kPag)	3.2
Methane concentration in part per million (ppm)	7,050
Methane emission rate in grams per hour (g/hr)	0.01
Testing Method	Steady State

Monitoring Contractor*Please answer all the questions in this group.*

Name of monitoring contractor	Well Done New Mexico LLC
-------------------------------	--------------------------