

Submit a Copy To Appropriate District

Office
 District I – (575) 393-6161
 1625 N. French Dr., Hobbs, NM 88240
 District II – (575) 748-1283
 811 S. First St., Artesia, NM 88210
 District III – (505) 334-6178
 1000 Rio Brazos Rd., Aztec, NM 87410
 District IV – (505) 476-3460
 1220 S. St. Francis Dr., Santa Fe, NM
 87505

State of New Mexico
 Energy, Minerals and Natural Resources

Form C-103
 Revised July 18, 2013

OIL CONSERVATION DIVISION
 1220 South St. Francis Dr.
 Santa Fe, NM 87505

SUNDRY NOTICES AND REPORTS ON WELLS (DO NOT USE THIS FORM FOR PROPOSALS TO DRILL OR TO DEEPEN OR PLUG BACK TO A DIFFERENT RESERVOIR. USE "APPLICATION FOR PERMIT" (FORM C-101) FOR SUCH PROPOSALS.)		WELL API NO. 30-039-30531
1. Type of Well: Oil Well <input type="checkbox"/> Gas Well <input checked="" type="checkbox"/> Other		5. Indicate Type of Lease STATE <input checked="" type="checkbox"/> FEE <input type="checkbox"/>
2. Name of Operator HILCORP ENERGY COMPANY		6. State Oil & Gas Lease No. E-289-23
3. Address of Operator 382 Road 3100, Aztec, NM 87410		7. Lease Name or Unit Agreement Name Northeast Blanco Unit
4. Well Location Unit Letter <u>K</u> <u>2685</u> feet from the <u>North</u> line and <u>2415</u> feet from the <u>West</u> line Section <u>2</u> Township <u>30N</u> Range <u>07W</u> NMPM Rio Arriba County		8. Well Number 258H
11. Elevation (Show whether DR, RKB, RT, GR, etc.) 6295' GL		9. OGRID Number 372171
10. Pool name or Wildcat S. Los Pinos Fruitland Sand/Pictured Cliffs		

12. Check Appropriate Box to Indicate Nature of Notice, Report or Other Data

NOTICE OF INTENTION TO:	SUBSEQUENT REPORT OF:
PERFORM REMEDIAL WORK <input type="checkbox"/>	REMEDIAL WORK <input type="checkbox"/>
TEMPORARILY ABANDON <input type="checkbox"/>	ALTERING CASING <input type="checkbox"/>
PULL OR ALTER CASING <input type="checkbox"/>	COMMENCE DRILLING OPNS. <input type="checkbox"/>
DOWNHOLE COMMINGLE <input type="checkbox"/>	P AND A <input checked="" type="checkbox"/>
CLOSED-LOOP SYSTEM <input type="checkbox"/>	CASING/CEMENT JOB <input type="checkbox"/>
OTHER: <input type="checkbox"/>	OTHER: <input type="checkbox"/>

13. Describe proposed or completed operations. (Clearly state all pertinent details, and give pertinent dates, including estimated date of starting any proposed work). SEE RULE 19.15.7.14 NMAC. For Multiple Completions: Attach wellbore diagram of proposed completion or recompletion.

Hilcorp Energy Company plugged and abandoned the subject well on 11/15/2023 per the attached report.

Spud Date:

Rig Release Date:

11/15/2023

I hereby certify that the information above is true and complete to the best of my knowledge and belief.

SIGNATURE Tammy Jones TITLE Operations / Regulatory Technician DATE 11/27/2023

Type or print name Tammy Jones E-mail address: tajones@hilcorp.com PHONE: 505-324-5185

For State Use Only

APPROVED BY: _____ TITLE _____ DATE _____

Conditions of Approval (if any): _____

NORTHEAST BLANCO UNIT 258H

E-289-23

30.039.30531

PLUG & ABANDON

11/2/2023 – MIRU. CHECK PSI ON WELL. SITP 0#, SICP 0#, SIICP 0#, BH 0#, NO PRESSURE ON WELL. ND WH. NU AND FUNCTION TEST BOP'S. RU RIG FLOOR. UNSET TBG HANGER. TOO H W/ TBG. P/U 3-7/8" STRING MILL. TIH TO W/ STRING MILL AND BIT. TAG HARD AT 3914'. L/D TBG (TALLYING). L/D STRING MILL. SIW. SDFN.

11/3/2023 – CHECK PSI ON WELL SITP N/A, SICP 0#, SIICP 0#, BH 0#, BDW 0 MIN. PU 4-1/2" RBP. RIH & SET AT 30'. LOAD AND PT PLUG TO 500 PSI (GOOD). ND BOP. EXCAVATE WH. NU BOP. FT AND PT BOP (GOOD). PLD 4-1/2" RBP. RU WL. PU JET CUTTER. RIH TO 3295'. KI RIG PUMP. PUMP JET CUTTER TO 3890'. MAKE JET CUT IN 4-1/2" CSG AT 3880' (19' ABOVE COLLAR). POOH. RD WL. PU SELECT 4-1/2" RBP & SET AT 30'. LOAD AND TEST PLUG TO 500 PSI (GOOD). ND BOP. ND WELLHEAD. HELD PJSM. RU WELDER. WELD SLIPS TO 4-1/2" CSG. NU 11" 5K SPOOL. NU 11" 5K BOP W/4-1/2" RAMS. NU 11" 5K X 7" 3K X-OVER SPOOL. RU WELLCHECK. LOAD AND PRESSURE TEST BOP (CHARTED, GOOD). RD WELLCHECK. PLD 4-1/2" RBP. RU WL. PU PERF GUN. RIH. PUMP 30BBL WTR. SHOOT 3 SPF AT 2369' (CENTER OF CSG PCKR). POOH. RD WL. SIW. SDFN.

11/6/2023 – (MONICA KUEHLING, NMOCD APPROVED REVISED PLUGGING DESIGN AFTER FAILING TO PULL THE 4-1/2" CASING – SEE ATTACHED EMAILS) CHECK PSI ON WELL SITP N/A, SICP 0#, SIICP 0#, BH 0#, BDW 0 MIN. TIE BACK DRILL LINE. TO PULL 4 1/2" CASING. LW WITH 60 BBL OF FW. BEFORE SPEARING INTO 4 1/2" CASING. ATTEMPT TO PULL 4 1/2" CASING WITH SPEAR. SW @ 45,000, PULLED 120,000. CAME OFF SLIPS 1' @ 90,000. NO SUCCESS. WAITING ON ORDERS TO PROCEED. R/D FISHING TOOLS. XO HANDLING TOOLS, PIPE RAMS TO 2 3/8". XO STRIPPING HEAD TO 2 3/8". XO BACK TO DOUBLE LINE. WAITING ON TBG FLOAT MOVED AROUND. TALLY, STRAP, DRIFT AND PU 2.375" 4.7# TBG 16 JTS. TOO H TO PERF. RU WIRELINE. TIH 8 STDS. START PU 2.374" TBG TO 3860'. TOO H 12 STDS OF 2.375" TBG. SIW. SDFN. **(JOHN DURHAM WITH NMOCD ON LOCATION)**

11/7/2023 – CHECK PSI ON WELL SITP 0#, SICP 0#, SIICP 0#, BH 0#, BDW 0 MIN. TOO H 49 STDS OF 2.375" TBG. RU FISHING HAND. RIH 1 JT TBG & SET RBP. FOR WELL CONTROL. ND 11" BOP RENTAL. NU 7" BOP, PRESSURE TEST & FUNCTION TEST BOP. RU FLOOR. RIH UN-SET RBP & RD FISHING HAND. MU 4 1/2" CICR. TIH WITH 2.375" TBG TO 3840' & SET CICR. LW 55 BBL ON BACKSIDE, NO FLUID TO SURFACE. LOAD TUBING 12 BBL. PT 500 PSI ON CICR. **CEMENT PLUG #1 (COVER 7" SHOE)** 44 SX 10.7 BBL, 1.37, 14.8#, 6.64 GAL/SX TOC @ 3730', BOC @ 3880'. 7 SKS ABOVE, AND 37 SKS BELOW CICR. DISPLACE 14.4 BBL. LD 4 JTS. TOO H 59 STDS OF 2.375" TBG. LD STINGER. WOC. MU TAG SUB, TIH 59 STDS & TAG BACK @ 3840'. PUMP 25 BBL OF FW. **RE-PUMP CEMENT PLUG #1 (COVER 7" SHOE)** 10 SX 2.4 BBL, 1.37, 14.8#, 6.64 GAL/SX. TOC @ 3683', BOC @ 3840'. LD 6 JTS. TOO H 58 STDS OF 2.375" TBG. SIW. SDFN. **(JOHN DURHAM WITH NMOCD ON LOCATION)**

11/8/2023 – (MONICA KUEHLING, NMOCD APPROVED REVISED PLUGGING DESIGN AFTER FAILING TO GET AMPLE CMT ON TOP OF CICR @ 3820' – SEE ATTACHED EMAILS) CHECK PSI ON WELL SITP 0#, SICP 0#, SIICP 0#, BH 0#, BDW 0 MIN. MU TAG SUB, TIH WITH 2.375" TBG & TAG CEMENT PLUG #1 @ 3831'. TRY TO LW WITH 80 BBL. NO CIRCULATION. TOO H 60 STDS OF 2.375" TBG. RU WIRELINE, RIH WITH 4-1/2" GR, AND CIBP TO 3040'. NO SUCCESS PASS THAT DEPTH. MU 4-1/2" SCRAPER & BIT. TIH TO CLEAR CASING FROM 3040' TO 3060'. TRIP TO 3830'. TOO H WITH 2.375" TBG. RU WIRELINE, RIH WITH CIBP TO 3162'. COULDN'T PASS SPOT. POOH & RD WIRELINE. SIW. SDFN. **(JOHN DURHAM WITH NMOCD ON LOCATION)**

NORTHEAST BLANCO UNIT 258H

E-289-23

30.039.30531

PLUG & ABANDON

11/9/2023 – CHECK PSI ON WELL SITP 0#, SICP 0#, SIICP 0#, BH 0#, BDW 0 MIN. RU W/L. RIH WITH SINKER BAR & 4-1/2" GR. TAG FLUID @ 2,365'. POOH & RD W/L. TIH WITH 61 STDS OF 2.375" TBG TO 3831'. **CEMENT PLUG #1 (COVER 7" SHOE)** 10 SX 2.3 BBL, 1.37, 14.8#, 6.64 GAL/SX. TOC @ 3681', BOC @ 3831'. DISPLACE 5 BBL, LD 6 JTS. TOO H 58 STDS OF 2.375" TBG, & WOC. RU FISHING HAND. MU ASIX 4-1/2" PACKER, 2 JTS & TAG SUB FOR TAIL PIPE. RIH TO 2335' & SET. LW 13 BBL, PT TO 600 PSI FOR 10 MIN & PASSED. UNSET PACKER, RIH TO 2400' & SET. LW 16 BBL, PT 700 PSI FOR 10 MIN, & PASSED. UNSET PACKER, RIH TO 2400' & SET. LW 16 BBL, PT 700 PSI FOR 10 MIN, & PASSED. LOOSING FLUID @ 2366'. RIH & TAG CEMENT PLUG #1 @ 3668'. LD 14 JTS. TOO H 51 STDS OF 2.375" TBG. LD PACKER. RU W/L. RIH & PERF & 3290'. POOH & RD W/L. SIW. SDFN. **(JOHN DURHAM WITH NMOCD ON LOCATION)**

11/10/2023 – CHECK PSI ON WELL SITP 0#, SICP 0#, SIICP 0#, BH 0#, BDW 0 MIN. MU 4-1/2" CICR, TIH W/ 2.375" TBG TO 3240', SET @ DEPTH. RU CEMENTERS TO RIG FLOOR. PUMP TBG CAPACITY & WELL STILL ON VACCUUM INTO FORMATION. **PUMP CEMENT PLUG #2 (PC TOP & 7" SHOE)** TO SEAL WHERE WE ARE LOSSING CIRCULATION TO SURFACE. PUMP 7 SKS OUT OF 40 SKS & CEMENT TRUCK WENT DOWN. WHICH TO DISPLACE PLUG TO END OF TBG. WOC PLUG. STAYED STING INTO CICR. LOAD TBG WITH FW TO PRESSURE TEST BUT STILL ON A VACUUM OUT INTO FORMATION. LOAD BACK SIDE WITH FW STILL ON A VACUUM. **RE-PUMP CEMENT PLUG #2 (PC TOP & 7" SHOE)** 40 SX 9.7 BBL, 1.37, 14.8#, 6.64 GAL/SX. TOC @ 3240', PUMP 40 SXS BELOW CICR. DISPLACE 12.5 BBL TO END OF TBG. WOC PLUG OVER THE WEEKEND. SIW. SDFN.

11/13/2023 – CHECK PSI ON WELL SITP 0#, SICP 0#, SIICP 0#, BH 0#, BDW 0 MIN. RU CEMENTERS TO RIG FLOOR. LW 77 BBLS, & PUMP 120 BBLS 1.4 BBLS/MIN. @ 510 PSI. GOT CIRCULATION TO SURFACE, PT TO 560 PSI & FAILED, STILL LOOSING FLUID INTO FORMATION. **RE-PUMP CEMENT PLUG #2 (PC TOP & 7" SHOE)** 35 SX 8.5 BBL, 1.37, 14.8#, 6.64 GAL/SX. TOC @ 3140', BOC @ 3240'. PUMP 28 SXS BELOW CICR & 7 SXS ON TOP OF CICR. DISPLACE 12.1 BBLS. LD 4 JTS. TOO H 49 STDS OF 2.375" TBG. LD STINGER. WOC. TIH WITH 49 STDS & TAG BACK @ 3240' ON TOP OF CICR. LW WITH 32 BBLS, PUMP 35 BBLS & PT TO 560 PSI. FAILED. **RE-PUMP CEMENT PLUG #2 ON TOP OF CICR (PC TOP)** 8 SX 1.9 BBL, 1.37, 14.8#, 6.64 GAL/SX. TOC @ 3125', BOC @ 3240'. PUMP 8 SXS ON TOP OF CICR. DISPLACE 11 BBLS. LD 5 JTS. TOO H 49 STDS OF 2.375" TBG. WOC OVERNIGHT. RU WIRELINE, RIH WITH 4-1/2" GR TO 2915', LD GR. RIH & PERF CIRCULATING HOLES @ 2915' FOR CEMENT PLUG #3. POOH & RD WIRELINE. SIW. SDFN. **(NMOCD REP. ANTHONY BUNNY ON LOCATION)**

11/14/2023 – CHECK PSI ON WELL SITP 0#, SICP 0#, SIICP 0#, BH 0#, BDW 0 MIN. TIH 49 STDS OF 2.375" TBG & TAG CEMENT PLUG #2 (PC TOP) @ 3116'. LD 9 JTS. TOO H 45 STDS OF 2.375" TBG. LD TAG SUB, MU 4-1/2" CICR & TIH TO 2865'. SET @ DEPTH. LW 35 BBLS, PUMP 45 BBLS @ 550 PSI, 1.4 BBLS/MIN. **PUMP CEMENT PLUG #3 (FRD,DV TOOL,FRD TOP)** 80 SX 19.5 BBL, 1.37, 14.8#, 6.64 GAL/SX. TOC @ 2365', BOC @ 2915'. 32 SKS ABOVE, AND 48 SKS BELOW CICR. DISPLACE 9.1 BBL, LD 17 JTS, R/O 18 BBLS @ 2339'. TOO H 37 STDS OF 2.375" TBG. LD STINGER & WOC. TIH 37 STDS & TAG CEMENT PLUG #3 @ 2402'. LD 6 JTS. **(NMOCD REP. APPROVED TAG)** TOO H 35 STDS OF 2.375" TBG. RU WIRELINE, RIH WITH 4-1/2" GR TO 2308', LD GR. RIH & PERF CIRCULATING HOLES @ 2308' FOR CEMENT PLUG #4. POOH & RD WIRELINE. MU 4-1/2" CICR, TIH 35 STDS OF 2.375" TBG TO 2258' SET @ DEPTH. LW 15 BBLS, PUMP 20 BBLS. **PUMP CEMENT PLUG #4 (PC,OJO)** 26 SX 6.3 BBL, 1.37, 14.8#, 6.64 GAL/SX. TOC @ 2108', BOC @ 2308'. 10 SKS ABOVE, AND 16 SKS BELOW CICR. DISPLACE 8.1 BBL, LD 5 JTS TOO H 33 STDS OF 2.375" TBG. WOC OVERNIGHT. RU WIRELINE, RIH & PERF CIRCULATING HOLES @ 360' FOR CEMENT PLUG #5 (SURFACE). POOH & RD WIRELINE. SIW. SDFN. **(JOHN DURHAM WITH NMOCD ON LOCATION)**

NORTHEAST BLANCO UNIT 258H E-289-23 30.039.30531 PLUG & ABANDON

11/15/2023 – CHECK PSI ON WELL SITP 0#, SICP 0#, SIICP 0#, BH 0#, BDW 0 MIN. MU TAG SUB, TIH WITH 2.375" TBG & TAG CEMENT PLUG #4 @ 2045'. LD 66 JTS OF 2.375" TBG. RU CEMENTERS. LW W/5 BBLS OF FW, PUMP 25 BBLS TO SURFACE. **PUMP CEMENT PLUG #5 (SURFACE SHOE)** 60 SXS 1.37, 14.8#, 6.64 GAL/SX. TOC @ 0', BOC @ 360'. RD RIG FLOOR, ND BOP, PREP TO CUT OFF WH (W.O.C.) **(NOTIFIED NMOCD MONICA KUEHLING AND BLM OF RIG MOVE FROM NEBU 258H TO SAN JUAN 30-5 UNIT 47)** CUT OFF WH (TOC IN 7" 0'/TOC, 4.5" 0', & BH 13') WELD ON P&A MARKER, FILL CASING AND CELLAR WITH 25 SX CEMENT. RIG DOWN RIG AND EQUIPMENT - **(RIG RELEASED @ 18:30 11/15/23)**.

NMOCD INSPECTOR – JOHN DURHAM, WITNESSED PLUGGING OPERATIONS.

Tammy Jones

From: Kuehling, Monica, EMNRD <monica.kuehling@emnrd.nm.gov>
Sent: Wednesday, November 8, 2023 9:14 AM
To: Rustin Mikeska
Cc: Max Weaver; Lee Murphy; Michael Wissing; Priscilla Shorty; Tammy Jones; Brice Clyde - (C); Issac Overright - (C); Craig Lingo; Durham, John, EMNRD
Subject: RE: [EXTERNAL] Hilcorp P&A Variance Request: Northeast Blanco Unit 258H

CAUTION: External sender. DO NOT open links or attachments from UNKNOWN senders.

NMOCD approves below

Thank you

Monica Kuehling
 Compliance Officer Supervisor
 Deputy Oil and Gas Inspector
 New Mexico Oil Conservation Division
 North District
 Office Phone: 505-334-6178 ext. 123
 Cell Phone: 505-320-0243
 Email - monica.kuehling@emnrd.nm.gov

From: Rustin Mikeska <rmikeska@hilcorp.com>
Sent: Wednesday, November 8, 2023 9:02 AM
To: Kuehling, Monica, EMNRD <monica.kuehling@emnrd.nm.gov>
Cc: Max Weaver <mweaver@hilcorp.com>; Lee Murphy <lmurphy@hilcorp.com>; Michael Wissing <mwissing@hilcorp.com>; Priscilla Shorty <pshorty@hilcorp.com>; Tammy Jones <tajones@hilcorp.com>; Brice Clyde - (C) <Brice.Clyde@hilcorp.com>; Issac Overright - (C) <Issac.Overright@hilcorp.com>; Craig Lingo <clingo@hilcorp.com>; Durham, John, EMNRD <john.durham@emnrd.nm.gov>
Subject: RE: [EXTERNAL] Hilcorp P&A Variance Request: Northeast Blanco Unit 258H

Good morning Monica – Please review the following proposal after failing to get ample cmt on top of our CICR @ 3,820’.

Completed:

- Jet cut 4-1/2” csg 2 3,880’. Max out rig pull – pull and pump diagnostics suggest csg pkr @ 2,360’ is holding and likely permanent.
- **[Added] Plug #1 (7” Shoe)**
 1. Set CICR @ 3,840’ – establish injection into jet cut & 4-1/2”.
 2. 37sx (9.0bbl) below CICR
 3. 7sx (1.7bbl) on top of CICR
 4. WOC 4hr, Tag CICR – no cmt on top of CICR
 5. Repump 10sx (2.4 bbl) cmt on top
 6. WOC 4hr, Tag 10’ high @ 3,830’ – communication w/ depleted zone & probable failed CICR.

Proposed:

1. Set CIBP on wire in 4-1/2” @ 3,820’ (10’ above tag depth) – Pressure test 4-1/2” casing to ensure “bottom” has been achieved.
2. Spot 10sx (2.4 bbl) Class III cmt on top (145’).

3. Perf circ holes in 4-1/2" @ 3,290' for Plug #2
4. Continue execution as proposed.

Thanks,

Rustin Mikeska

P&A – Petroleum Engineer

Cell: (254) 913-6777

Office: (713) 289-2931

rmikeska@hilcorp.com



From: Kuehling, Monica, EMNRD <monica.kuehling@emnrd.nm.gov>

Sent: Monday, November 6, 2023 2:19 PM

To: Rustin Mikeska <rmikeska@hilcorp.com>

Cc: Max Weaver <mweaver@hilcorp.com>; Lee Murphy <lmurphy@hilcorp.com>; Michael Wissing <mwissing@hilcorp.com>; Priscilla Shorty <pshorty@hilcorp.com>; Tammy Jones <tajones@hilcorp.com>; Brice Clyde - (C) <Brice.Clyde@hilcorp.com>; Issac Overright - (C) <Issac.Overright@hilcorp.com>; Craig Lingo <clingo@hilcorp.com>; Durham, John, EMNRD <john.durham@emnrd.nm.gov>

Subject: RE: [EXTERNAL] Hilcorp P&A Variance Request: Northeast Blanco Unit 258H

CAUTION: External sender. DO NOT open links or attachments from UNKNOWN senders.

NMOCD approves below

Thank you

Monica Kuehling

Compliance Officer Supervisor

Deputy Oil and Gas Inspector

New Mexico Oil Conservation Division

North District

Office Phone: 505-334-6178 ext. 123

Cell Phone: 505-320-0243

Email - monica.kuehling@emnrd.nm.gov

From: Rustin Mikeska <rmikeska@hilcorp.com>

Sent: Monday, November 6, 2023 12:27 PM

To: Kuehling, Monica, EMNRD <monica.kuehling@emnrd.nm.gov>

Cc: Max Weaver <mweaver@hilcorp.com>; Lee Murphy <lmurphy@hilcorp.com>; Michael Wissing <mwissing@hilcorp.com>; Priscilla Shorty <pshorty@hilcorp.com>; Tammy Jones <tajones@hilcorp.com>; Brice Clyde - (C) <Brice.Clyde@hilcorp.com>; Issac Overright - (C) <Issac.Overright@hilcorp.com>; Craig Lingo <clingo@hilcorp.com>

Subject: RE: [EXTERNAL] Hilcorp P&A Variance Request: Northeast Blanco Unit 258H

Afternoon Monica – After failing to pull the 4-1/2" casing, we are proposing the following:

Northeast Blanco Unit 258H

3003930531

Completed:

Jet cut 4-1/2" csg 2 3,880'. Max out rig pull – pull and pump diagnostics suggest csg pkr @ 2,360' is holding and likely permanent.

Proposal:

1. Perf circ holes in 4-1/2" @ 2,365' below csg pkr to allow for circulation of cmt plugs #1 - #3.
2. **[Added] Plug #1** (7" Shoe) | ~200' balanced cmt plug consisting of 44sx (10.7bbl)
 - A. Set CICR @ 3,840' – establish injection into jet cut & 4-1/2".
 - B. 37sx (9.0bbl) below CICR – *this volume includes:*
 1. 100% excess for the openhole capacity & 120' pipe-in-pipe volume
 2. Annular volume to circulate up 7" x 4-1/2" annulus if open formation will allow
 - C. 7sx (1.7bbl) on top of CICR
3. **[Revised] Plug #2** (PC Top) w/ 4hr WOC & Tag
 - A. Perf 4-1/2" csg @ 3,290' MD – establish circulation.
 - B. Set CICR @ 3,240'.
 - C. 22sx (5.4 bbl) 150' balanced cmt plug from 3,140' – 3,290'
4. Obtain pressure test on 4-1/2" & 7" casing to show full integrity of csg strings
5. **[Revised] Plug #3** (FRD, DV Tool, KR D Tops) ***Note – this plug will be split if any BH or IC pressure exists.**
 - A. Perf 4-1/2" csg @ 2,915' – establish circulation.
 - B. 80sx (19.5 bbl) 550' balanced cmt plug from 2,365' – 2,915'
6. **[Revised] Plug #4** (PC & FRD Tops)
 - A. Perf 4-1/2" csg @ 2,308' MD – establish circulation.
 - B. Set CICR @ 2,258'.
 - C. 22sx (5.4 bbl) 150' balanced cmt plug from 2,158' – 2,308'
7. **Plug #5** (Surface Plug) w/ 4hr WOC
 - A. As originally proposed.

All cement is Class III "Select" 1.37 yield cement.

Thanks,

Rustin Mikeska

P&A – Petroleum Engineer

Cell: (254) 913-6777

Office: (713) 289-2931

rmikeska@hilcorp.com**From:** Rustin Mikeska**Sent:** Tuesday, October 31, 2023 10:47 AM**To:** Kuehling, Monica, EMNRD <monica.kuehling@emnrd.nm.gov>

Cc: Max Weaver <mweaver@hilcorp.com>; Lee Murphy <lmurphy@hilcorp.com>; Michael Wissing <mwissing@hilcorp.com>; Priscilla Shorty <pshorty@hilcorp.com>; Tammy Jones <tajones@hilcorp.com>; Brice Clyde - (C) <Brice.Clyde@hilcorp.com>; Issac Overright - (C) <Issac.Overright@hilcorp.com>; Craig Lingo <clingo@hilcorp.com>

Subject: RE: [EXTERNAL] Hilcorp P&A Variance Request: Northeast Blanco Unit 258H

Good morning Monica – As discussed, we have reviewed the packer used on the 4-1/2" casing and believe we can cut/pull the 4-1/2" casing. This would greatly simplify and improve the plugging design.

Proposed (Pull Casing Design):

1. POOH w/ 2-3/8" production tbg.
2. Cut/Pull 4-1/2" casing from 3,880'
3. Set 7" CICR @ 3,840'
4. **Plug #1 (7" Liner Shoe)** | Sqz 20' of 7" casing and 50' openhole capacity + 100%, then spot cmt on top of CICR.

- a. [Below CICR] 19sx (4.6bbl) Class III "Select" cmt
- b. [Above CICR] 17sx (4.1bbl) Class III "Select" cmt
- c. WOC 4hr, tag TOC @ 3,740'
5. Pressure test plug & casing to 560psi for 30min
6. **Plug #2 (PC)** | Circulate in and spot 150' balanced cmt plug from 3,140' – 3,290'
 - a. 25sx (6.1 bbl) Class III "Select" cmt
7. **Plug #3 (FRD, DV Tool)** | circulate in and spot 238' cmt plug from 2,677' – 2,915'
8. **Plug #4 (KRD, OJO)** | Circulate in and spot 331' balanced cmt plug from 2,158' – 2,489'
 - a. 54sx (13.2bbl) Class III "Select" cmt
 - b. * Ojo and Kirtland plugs will be separated if BH pressure present.
9. **Plug #5 (Surface)** | Circulate in and spot 356' balanced cmt plug from 356' – surface.
 - a. 50sx (12.2bbl) Class III "Select" cmt
10. WOC 4hr – Cut wellhead, well P&A marker, top off cmt at surface.

Note: State-submitted cement reports for the 7" casing suggest cement behind pipe to surface. Cement was circulated to surface in both stages as proposed in the drilling program.

Thanks,

Rustin Mikeska

P&A – Petroleum Engineer

Cell: (254) 913-6777

Office: (713) 289-2931

rmikeska@hilcorp.com



From: Kuehling, Monica, EMNRD <monica.kuehling@emnrd.nm.gov>

Sent: Thursday, October 26, 2023 3:53 PM

To: Rustin Mikeska <rmikeska@hilcorp.com>

Cc: Max Weaver <mweaver@hilcorp.com>; Lee Murphy <lmurphy@hilcorp.com>; Michael Wissing <mwissing@hilcorp.com>;

Priscilla Shorty <pshorty@hilcorp.com>; Tammy Jones <tajones@hilcorp.com>; Brice Clyde - (C) <Brice.Clyde@hilcorp.com>

Subject: RE: [EXTERNAL] Hilcorp P&A Variance Request: Northeast Blanco Unit 258H

CAUTION: External sender. DO NOT open links or attachments from UNKNOWN senders.

Rustin

Agreed

You will need to tag first plug as well.

Monica

From: Rustin Mikeska <rmikeska@hilcorp.com>

Sent: Thursday, October 26, 2023 11:24 AM

To: Kuehling, Monica, EMNRD <monica.kuehling@emnrd.nm.gov>

Cc: Max Weaver <mweaver@hilcorp.com>; Lee Murphy <lmurphy@hilcorp.com>; Michael Wissing <mwissing@hilcorp.com>;

Priscilla Shorty <pshorty@hilcorp.com>; Tammy Jones <tajones@hilcorp.com>; Brice Clyde - (C) <Brice.Clyde@hilcorp.com>

Subject: RE: [EXTERNAL] Hilcorp P&A Variance Request: Northeast Blanco Unit 258H

Morning Monica – As discussed, the following plug designs will be revisited pending the pressure test after Plug #1 to determine whether they need to be split.

Plug #2 | PC & FRD

Plug #3 | DV Tool, KRD, Ojo

Thanks,

Rustin Mikeska

P&A – Petroleum Engineer

Cell: (254) 913-6777

Office: (713) 289-2931

rmikeska@hilcorp.com



From: Kuehling, Monica, EMNRD <monica.kuehling@emnrd.nm.gov>

Sent: Thursday, October 26, 2023 12:12 PM

To: Rustin Mikeska <rmikeska@hilcorp.com>

Cc: Max Weaver <mweaver@hilcorp.com>; Lee Murphy <lmurphy@hilcorp.com>; Michael Wissing <mwissing@hilcorp.com>; Priscilla Shorty <pshorty@hilcorp.com>; Tammy Jones <tajones@hilcorp.com>; Brice Clyde - (C) <Brice.Clyde@hilcorp.com>

Subject: RE: [EXTERNAL] Hilcorp P&A Variance Request: Northeast Blanco Unit 258H

CAUTION: External sender. DO NOT open links or attachments from UNKNOWN senders.

Rustin

As discussed on phone – the pc and fruitland plug cannot be combined

Please revise below

Monica

From: Rustin Mikeska <rmikeska@hilcorp.com>

Sent: Thursday, October 26, 2023 10:52 AM

To: Kuehling, Monica, EMNRD <monica.kuehling@emnrd.nm.gov>

Cc: Max Weaver <mweaver@hilcorp.com>; Lee Murphy <lmurphy@hilcorp.com>; Michael Wissing <mwissing@hilcorp.com>; Priscilla Shorty <pshorty@hilcorp.com>; Tammy Jones <tajones@hilcorp.com>; Brice Clyde - (C) <Brice.Clyde@hilcorp.com>

Subject: [EXTERNAL] Hilcorp P&A Variance Request: Northeast Blanco Unit 258H

CAUTION: This email originated outside of our organization. Exercise caution prior to clicking on links or opening attachments.

Morning Monica,

As discussed, we are proposing the following P&A plug design based on close proximity of the openhole packer to the 7" casing shoe. We plan to move to this well early next week.

Northeast Blanco Unit 258H

3003930531

Proposal:

1. **[Added] Plug #1** (7" Shoe) | ~200' balanced cmt plug consisting of 31sx (7.6bbl)
 - A. Perf 4-1/2" csg @ 3,840' MD – establish injection into annulus.
 - B. Set CICR @ 3,790' MD

- C. 24sx (5.9bbl) below CICR – *this volume includes 100% excess for the openhole capacity & 150' pipe-in-pipe volume*
- D. 7sx (1.7bbl) on top of CICR
2. **[Revised] Plug #2** (PC & FRD Tops)
- A. Perf 4-1/2" csg @ 3,290' MD – establish circulation.
- B. 81sx (19.8bbl) 577' balanced cmt plug from 2,765' – 3,290'
3. **[Revised] Plug #3** (DV Tool, KRD, Ojo Tops) ***Note – this plug will be split if any BH or IC pressure exists.**
- A. Perf 4-1/2" csg @ 2,777' – establish circulation.
- B. 90sx (22.0bbl) 619' balanced cmt plug from 2,158' – 2,777'
4. **Plug #4** (Surface Plug)
- A. As originally proposed.

Note – If a pressure test is not obtained on the 4-1/2" after Plug #1, a CICR will be used to ensure proper placement of cmt. All cement is Class III "Select" 1.37 yield cement.

No bradenhead pressure observed in historical BH test (NMOCD records).

Thanks,

Rustin Mikeska

P&A – Petroleum Engineer

Cell: (254) 913-6777

Office: (713) 289-2931

rmikeska@hilcorp.com



The information contained in this email message is confidential and may be legally privileged and is intended only for the use of the individual or entity named above. If you are not an intended recipient or if you have received this message in error, you are hereby notified that any dissemination, distribution, or copy of this email is strictly prohibited. If you have received this email in error, please immediately notify us by return email or telephone if the sender's phone number is listed above, then promptly and permanently delete this message.

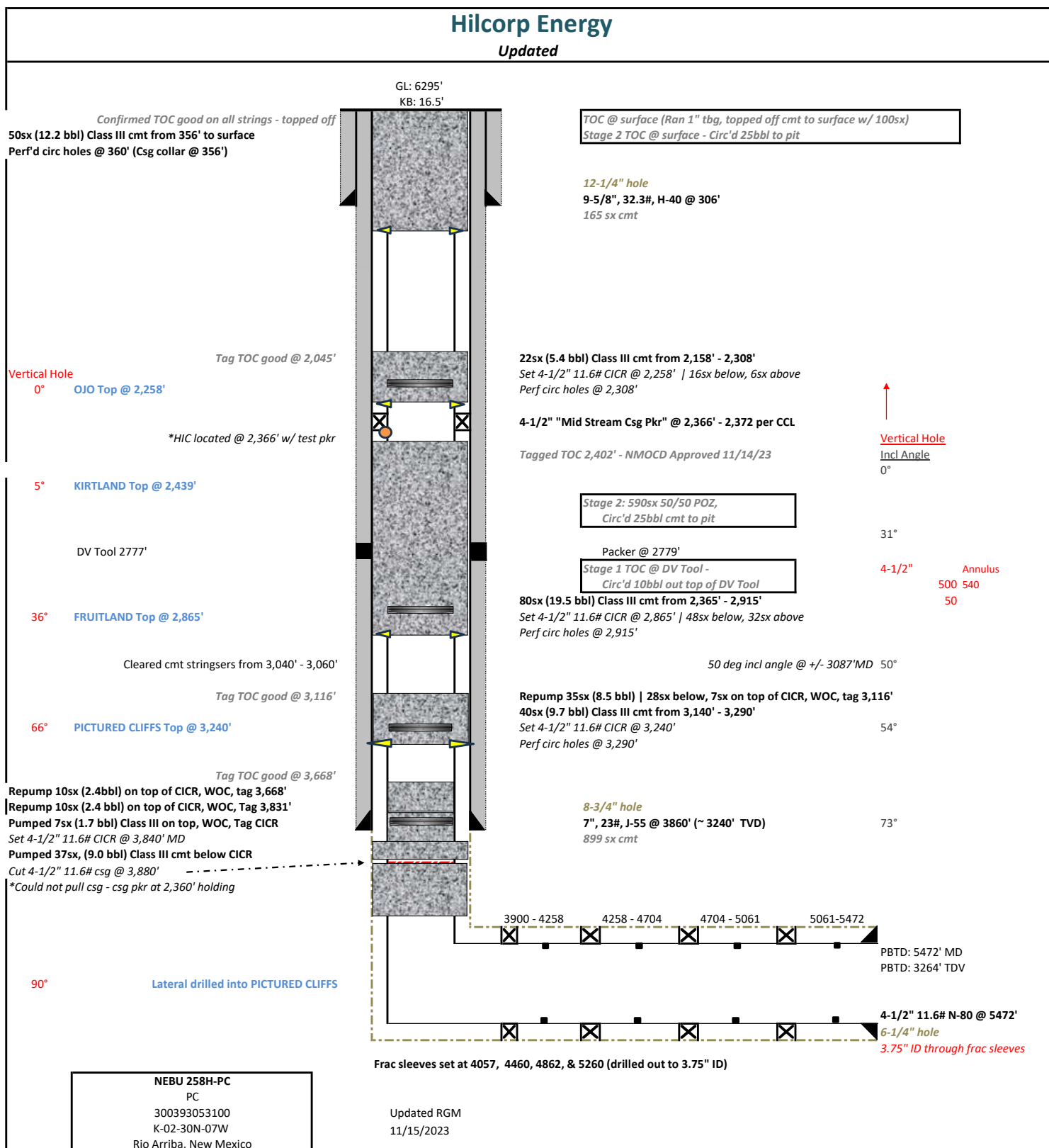
While all reasonable care has been taken to avoid the transmission of viruses, it is the responsibility of the recipient to ensure that the onward transmission, opening, or use of this message and any attachments will not adversely affect its systems or data. No responsibility is accepted by the company in this regard and the recipient should carry out such virus and other checks as it considers appropriate.

The information contained in this email message is confidential and may be legally privileged and is intended only for the use of the individual or entity named above. If you are not an intended recipient or if you have received this message in error, you are hereby notified that any dissemination, distribution, or copy of this email is strictly prohibited. If you have received this email in error, please immediately notify us by return email or telephone if the sender's phone number is listed above, then promptly and permanently delete this message.

While all reasonable care has been taken to avoid the transmission of viruses, it is the responsibility of the recipient to ensure that the onward transmission, opening, or use of this message and any attachments will not adversely affect its systems or data. No responsibility is accepted by the company in this regard and the recipient should carry out such virus and other checks as it considers appropriate.

The information contained in this email message is confidential and may be legally privileged and is intended only for the use of the individual or entity named above. If you are not an intended recipient or if you have received this message in error, you are hereby notified that any dissemination, distribution, or copy of this email is strictly prohibited. If you have received this email in error, please immediately notify us by return email or telephone if the sender's phone number is listed above, then promptly and permanently delete this message.

While all reasonable care has been taken to avoid the transmission of viruses, it is the responsibility of the recipient to ensure that the onward transmission, opening, or use of this message and any attachments will not adversely affect its systems or data. No responsibility is accepted by the company in this regard and the recipient should carry out such virus and other checks as it considers appropriate.



District I
1625 N. French Dr., Hobbs, NM 88240
Phone:(575) 393-6161 Fax:(575) 393-0720

District II
811 S. First St., Artesia, NM 88210
Phone:(575) 748-1283 Fax:(575) 748-9720

District III
1000 Rio Brazos Rd., Aztec, NM 87410
Phone:(505) 334-6178 Fax:(505) 334-6170

District IV
1220 S. St Francis Dr., Santa Fe, NM 87505
Phone:(505) 476-3470 Fax:(505) 476-3462

State of New Mexico
Energy, Minerals and Natural Resources
Oil Conservation Division
1220 S. St Francis Dr.
Santa Fe, NM 87505

CONDITIONS

Action 288241

CONDITIONS

Operator: HILCORP ENERGY COMPANY 1111 Travis Street Houston, TX 77002	OGRID: 372171
	Action Number: 288241
	Action Type: [C-103] Sub. Plugging (C-103P)

CONDITIONS

Created By	Condition	Condition Date
mkuehling	well plugged 11/15/2023	12/22/2023