

Submit 1 Copy To Appropriate District Office  
 District I – (575) 393-6161  
 1625 N. French Dr., Hobbs, NM 88240  
 District II – (575) 748-1283  
 811 S. First St., Artesia, NM 88210  
 District III – (505) 334-6178  
 1000 Rio Brazos Rd., Aztec, NM 87410  
 District IV – (505) 476-3460  
 1220 S. St. Francis Dr., Santa Fe, NM 87505

State of New Mexico  
 Energy, Minerals and Natural Resources

Form C-103  
 Revised July 18, 2013

OIL CONSERVATION DIVISION  
 1220 South St. Francis Dr.  
 Santa Fe, NM 87505

WELL API NO. 30-025-38082
5. Indicate Type of Lease STATE <input type="checkbox"/> FEE <input type="checkbox"/>
6. State Oil & Gas Lease No.
7. Lease Name or Unit Agreement Name INBE 12
8. Well Number #001
9. OGRID Number 372076
10. Pool name or Wildcat WILDCAT;GROUP 8

SUNDRY NOTICES AND REPORTS ON WELLS  
 (DO NOT USE THIS FORM FOR PROPOSALS TO DRILL OR TO DEEPEN OR PLUG BACK TO A DIFFERENT RESERVOIR. USE "APPLICATION FOR PERMIT" (FORM C-101) FOR SUCH PROPOSALS.)

1. Type of Well: Oil Well <input checked="" type="checkbox"/> Gas Well <input type="checkbox"/> Other <input type="checkbox"/>
2. Name of Operator Lease Holders Acquisitions
3. Address of Operator 705 S Mustang rd #127, Yukon, OK 73099
4. Well Location Unit Letter: O : 660 feet from the S line and 1900 feet from the E line Section 12 Township 11S Range 33E NMPM County: Lea
11. Elevation (Show whether DR, RKB, RT, GR, etc.)

12. Check Appropriate Box to Indicate Nature of Notice, Report or Other Data

NOTICE OF INTENTION TO:		SUBSEQUENT REPORT OF:	
PERFORM REMEDIAL WORK <input type="checkbox"/>	PLUG AND ABANDON <input type="checkbox"/>	REMEDIAL WORK <input type="checkbox"/>	ALTERING CASING <input type="checkbox"/>
TEMPORARILY ABANDON <input type="checkbox"/>	CHANGE PLANS <input type="checkbox"/>	COMMENCE DRILLING OPNS. <input type="checkbox"/>	P AND A <input checked="" type="checkbox"/>
PULL OR ALTER CASING <input type="checkbox"/>	MULTIPLE COMPL <input type="checkbox"/>	CASING/CEMENT JOB <input type="checkbox"/>	
DOWNHOLE COMMINGLE <input type="checkbox"/>			
CLOSED-LOOP SYSTEM <input type="checkbox"/>			
OTHER: <input type="checkbox"/>		OTHER: <input type="checkbox"/>	

13. Describe proposed or completed operations. (Clearly state all pertinent details, and give pertinent dates, including estimated date of starting any proposed work). SEE RULE 19.15.7.14 NMAC. For Multiple Completions: Attach wellbore diagram of proposed completion or recompletion.

See Plugging Procedure/Events Below

Spud Date:

Rig Release Date:

I hereby certify that the information above is true and complete to the best of my knowledge and belief.

SIGNATURE: Ethan Wakefield TITLE: Authorized Representative DATE: 11/21/2023

Type or print name: Ethan Wakefield E-mail address: e.wakefield@dwsrags.com PHONE: 405-343-7736

**For State Use Only**

APPROVED BY: John Garcia TITLE: Supervisor DATE: 12/26/23  
 Conditions of Approval (if any):

## **Lease Holders Aquisitions**

### **Plug And Abandonment End Of Well Report**

**INBE 12 #001**

**660' FSL & 1900' FEL, Section 12, 11S, 33E**

**Lea County, NM / API 30-025-38082**

#### **Work Summary:**

- 10/17/23** Made BLM and NMOCD P&A operations notifications at 9:00 AM MST.
- 10/18/23** Moved rig and equipment to location.
- 10/19/23** Arrived on location held safety meeting. Checked well pressures. R/U unit and all equipment. Pulled 112 7/8" rods and 116 3/4" rods. NU BOP and function tested. Shut in and secured well.
- 10/20/23** Arrived on location held safety meeting. Checked well pressures. Pulled 47 stands of tubing wet with oil. Shutdown due to surrounding cattle and landowner. On hold until dry work can resume. Performed maintenance to rig and crew truck.
- 10/21/23** Arrived on location held safety meeting. Checked well pressures. R/U wireline services. RIH and perforated tubing at 3290' and at 3282'. Pulled tubing. L/D 285 joints and 78 3/4" rods. P/U casing scraper. TIH with casing scraper to 8900'. Secured well and shut down overnight.
- 10/22/23** Arrived on location held safety meeting. Checked well pressures. TOOH with casing scraper. P/U CR. TIH and set CR at 8597'. Roll hole with 200 bbls. Continued to circulate to get oil and gas out. Secured and shut in well.
- 10/23/23** Arrived on location held safety meeting. Checked well pressures. R/U wireline services. RIH and logged well. POOH. TIH with tubing to CR. R/U cementing services. Pumped plug #1 from 8592' to 8422'. TOOH. WOC overnight.

- 10/24/23** Arrived on location held safety meeting. Checked well pressures. TIH and tagged plug #1 at 8377'. R/U cementing services. Successfully pressure tested casing. Pumped mud gel spacer from 8377' to 7650'. R/D cementers. L/D tubing. R/U cementing services. Pumped plug #2 from 7650' to 7443'. R/D cementers. L/D tubing. R/U cementing services. Pumped mud/gel spacer from 7443' to 6550'. R/D cementers. L/D tubing. R/U cementers. Pumped plug #3 from 6550' to 6343'. R/D cementers. L/D tubing. R/U cementing services. Pumped mud/gel spacer from 6343' to 5150'. TOOH. Shut in and secured well.
- 10/25/23** Arrived on location held safety meeting. Checked well pressures. R/U wireline services. RIH and tagged at 2630'. POOH. TIH with bit to 5150'. TOOH. R/U wireline services. RIH and perforated at 5150'. Repaired disk assist on rig. Secured well and shut down overnight.
- 10/26/23** Arrived on location held safety meeting. Checked well pressures. TIH with packer. Set packer at 4804'. Attempted to establish and injection rate but could not inject. TOOH. TIH to 5213'. R/U cementing services. Pumped plug #4 from 5213' to 4938'. TOOH. WOC overnight.
- 10/27/23** Arrived on location held safety meeting. Checked well pressures. TIH and tagged plug #4 at 4930'. R/U cementing services. Pumped mud/gel spacer from 4930' to 4170'. TOOH. Once out of hole the well began flowing water. Put gauges on and shut in well for 30 minutes. Pressure was at zero. R/U wireline services. RIH and perforated at 4170'. After perforating the well started flowing. POOH. TIH with a packer. Set packer at 3917'. Established an injection rate of 2 bbls/min at 100 psi. R/U cementing services. Pumped plug #5 from 4170' to 4020'. TOOH. Shut in and secured well for the night.
- 10/28/23** Arrived on location held safety meeting. Checked well pressures. TIH and tagged cement high at 2654'. TOOH. Wait on power swivel. R/U power swivel. Drilled out cement from 2654' to 2723'. Cleaned hole. TOOH. Plug migrated due to waterflow. Shut in and secured well.
- 10/29/23** Arrived on location held safety meeting. Checked well pressures. Thawed air lines and supply. TIH and drilled cement from 2723' to 3251'. Shutdown and secured well. Winterized pump and swivel.
- 10/30/23** Arrived on location held safety meeting. Checked well pressures. TIH and tagged at 3251'. Drilled cement to 3411'. Was able to TIH to 4170'. R/D power swivel. Shutdown and secured well. Winterized pump and equipment.

- 10/31/23** Arrived on location held safety meeting. Checked well pressures. TIH and tagged at 3251'. Drilled cement to 3411'. Was able to TIH to 4170'. R/D power swivel. Shutdown and secured well. Winterized pump and equipment.
- 11/1/23** Arrived on location held safety meeting. Checked well pressures. TIH and tagged plug #5 at 4180'. R/U cementing services. Continued pumping plug #5 from 4180' to 4020'. L/D 10 joints and TOOH. WOC 4 hours. TIH and tagged plug #5 at 3885'. R/U cementing services. Attempted to pump mud/gel spacer but tubing pressured up. TOOH. Secured and shut in well.
- 11/2/23** Arrived on location held safety meeting. Checked well pressures. TIH and tagged plug #5 at 3885'. R/U cementing services. Pumped mud/gel spacer from 3885' to 3750'. R/D cementers. L/D 4 joints and TOOH. R/U wireline services. RIH and perforated at 3750'. POOH. P/U packer. TIH and set packer at 3506'. R/U cementing services. Established an injection rate of 2.5 bbls/min at 320 psi. Pumped plug #6 from 3750' to 3600'. R/D cementers. Unset packer and TOOH. WOC overnight. Shut in and secured well.
- 11/3/23** Arrived on location held safety meeting. Checked well pressures. TIH and tagged plug #6 at 3140'. R/U cementing services. Pumped mud/gel spacer from 3140' to 2250'. R/D cementers. L/D 33 joints and TOOH. R/U wireline services. RIH and perforated at 2550'. POOH. P/U packer. TIH and set packer at 2306' with EOT at 2369'. R/U cementing services. Successfully established an injection rate of 4 bbls/min at 225 psi. Pumped plug #7 from 2550' to 2400'. R/D cementers. TOOH. WOC overnight. Shut in and secured well.
- 11/4/23** Arrived on location held safety meeting. Checked well pressures. TIH and tagged plug #7 at 2366'. R/U cementing services. pumped mud/gel spacer from 2366' to 475'. L/D 62 joints and TOOH. P/U packer. TIH and set at 463'. Successfully pressure tested casing below packer. Attempted to pressure test above packer but was unsuccessful. Unset packer and TOOH. R/U wireline services. RIH and perforated at 475'. P/U packer. TIH and set packer. Circulated through perforations. TOOH. P/U CR. TIH and set CR at 463'. Secured well and shut in for the day.
- 11/5/23** Arrived on location held safety meeting. Checked well pressures. R/U cementing services. Pumped plug #8 through CR and into perforations. Sting out of CR and cemented inside from 436' to surface. R/D all equipment and prepare to MOL.
- 11/17/23** Arrived on location and held safety meeting. Used backhoe to safely expose wellhead. Set up welding unit on location. Performed

wellhead cutoff. Removed old wellhead. Tagged at 15' in the surface casing and at 12' in the production casing. R/U cementers and topped off both strings. Welder attached marker per NMOCD regulations.

### **Plug Summary:**

#### **Plug #1: (Perforations, 8,597'-8,377', 21 Sacks Class H Cement)**

P/U CR. TIH and set CR at 8597'. Roll hole with 200 bbls. Continued to circulate to get oil and gas out. R/U wireline services. RIH and logged well. POOH. TIH with tubing to CR. R/U cementing services. Pumped plug #1 from 8597' to 8422'. TOOH. WOC overnight. TIH and tagged plug #1 at 8377'. R/U cementing services. Successfully pressure tested casing.

#### **Plug #2: (Abo Formation Top, 7,650'-7,443', 25 Sacks Class H Cement)**

R/U cementing services. Pumped plug #2 from 7650' to 7443'. R/D cementers. L/D tubing. R/U cementing services.

#### **Plug #3: (Tubb Formation Top, 6,550'-6,343', 25 Sacks Class H Cement)**

R/U cementers. Pumped plug #3 from 6550' to 6343'. R/D cementers.

#### **Plug #4: (Glorieta Formation Top, 5,213'-4,930', 34 Sacks Class H Cement)**

R/U wireline services. RIH and tagged at 2630'. POOH. TIH with bit to 5150'. TOOH. R/U wireline services. RIH and perforated at 5150'. TIH with packer. Set packer at 4804'. Attempted to establish and injection rate but could not inject. TOOH. TIH to 5213'. R/U cementing services. Pumped plug #4 from 5213' to 4938'. TOOH. WOC overnight. TIH and tagged plug #4 at 4930'.

#### **Plug #5: (Intermediate Casing Shoe, 4,180'-3,885', 45 Sacks Type I/II Cement)**

R/U wireline services. RIH and perforated at 4170'. After perforating the well started flowing. POOH. TIH with a packer. Set packer at 3917'. Established an injection rate of 2 bbls/min at 100 psi. R/U cementing services. Pumped plug #5 from 4170' to 4020'. TIH and tagged cement high at 2654'. Drilled out until 4180'. TIH and tagged plug #5 at 4180'. R/U cementing services. Continued



pumping plug #5 from 4180' to 4020'. L/D 10 joints and TOOH. WOC 4 hours. TIH and tagged plug #5 at 3885'.

**Plug #6: (San Andres Formation Top, 3,750'-3,140', 48 Sacks Type I/II Cement)**

R/U wireline services. RIH and perforated at 3750'. POOH. P/U packer. TIH and set packer at 3506'. R/U cementing services. Established an injection rate of 2.5 bbls/min at 320 psi. Pumped plug #6 from 3750' to 3600'. R/D cementers. Unset packer and TOOH. WOC overnight. TIH and tagged plug #6 at 3140'.

**Plug #7: (Yates Formation Top, 2,550'-2,366', 48 Sacks Type I/II Cement)**

R/U wireline services. RIH and perforated at 2550'. POOH. P/U packer. TIH and set packer at 2306' with EOT at 2369'. R/U cementing services. Successfully established an injection rate of 4 bbls/min at 225 psi. Pumped plug #7 from 2550' to 2400'. R/D cementers. TOOH. WOC overnight. TIH and tagged plug #7 at 2366'.

**Plug #8: (Surface, 475'-Surface', 393 Sacks Type I/II Cement (20 sx for top off))**

P/U packer. TIH and set at 463'. Successfully pressure tested casing below packer. Attempted to pressure test above packer but was unsuccessful. Unset packer and TOOH. R/U wireline services. RIH and perforated at 475'. P/U packer. TIH and set packer. Circulated through perforations. TOOH. P/U CR. TIH and set CR at 463'. R/U cementing services. Pumped plug #8 through CR and into perforations. Sting out of CR and cemented inside from 436' to surface. Performed wellhead cutoff. Removed old wellhead. Tagged at 15' in the surface casing and at 12' in the production casing. R/U cementers and topped off both strings. Welder attached marker per NMOCD regulations.

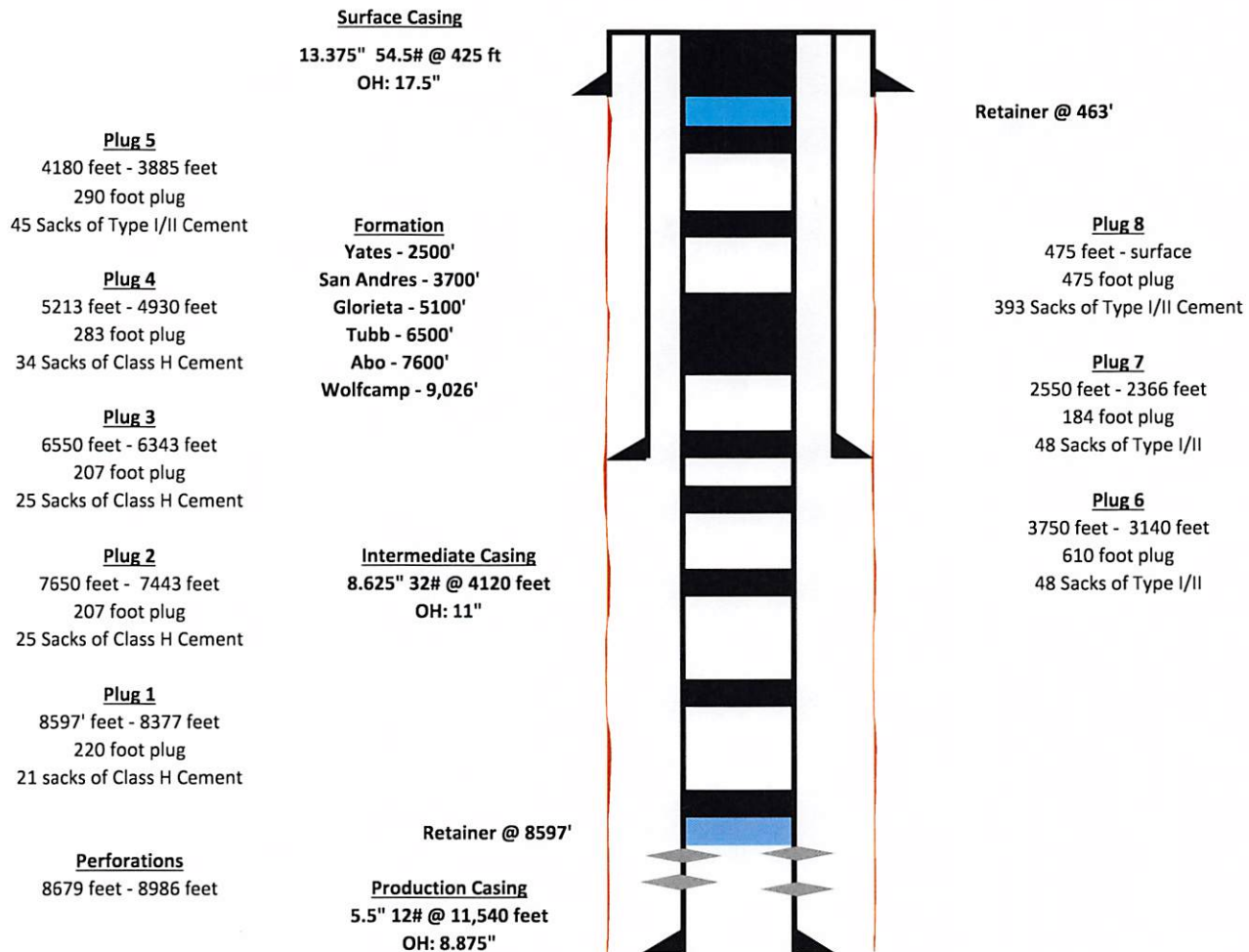
## Completed Wellbore Diagram

LEASE HOLDERS ACQUISITIONS

INBE 12 #001

API: 30-025-38082

Lea County, New Mexico

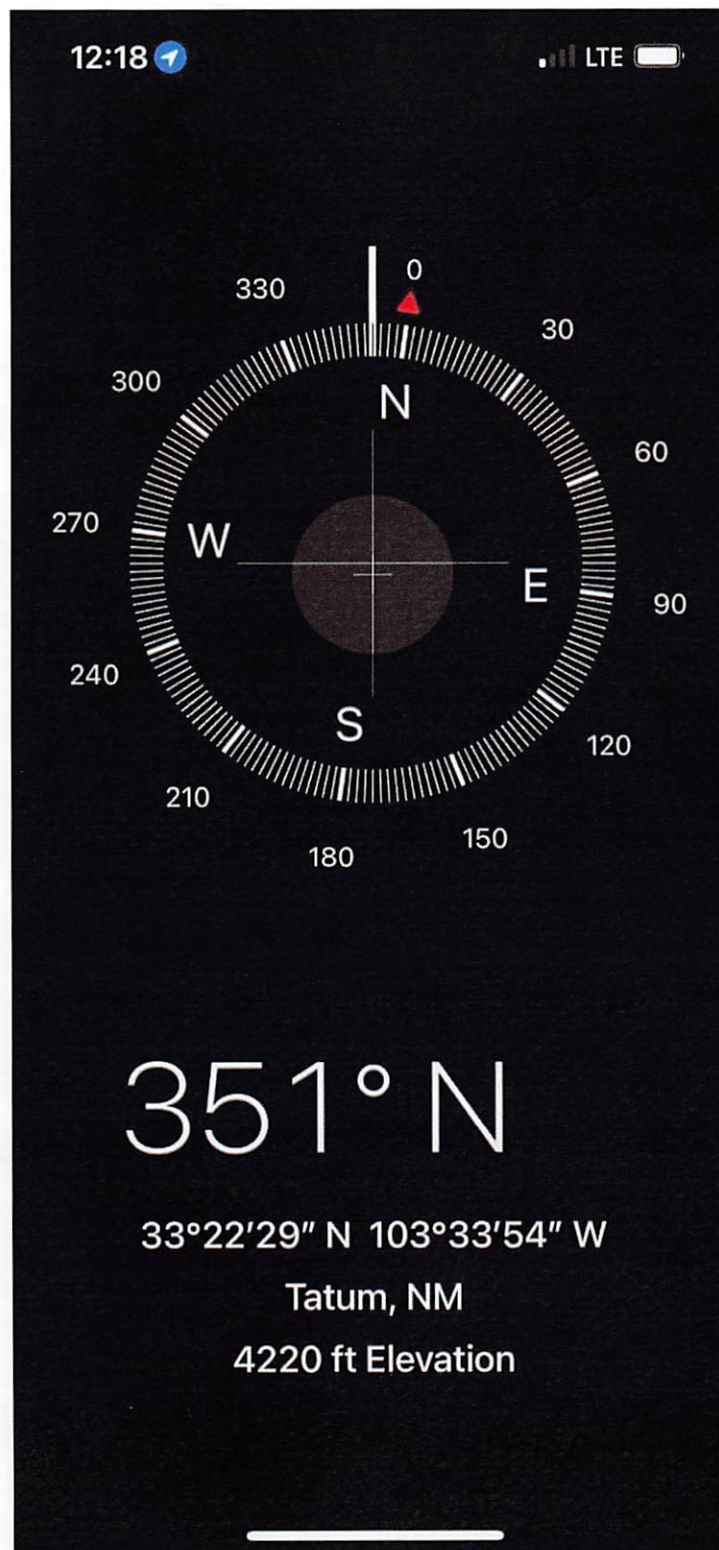














**District I**  
1625 N. French Dr., Hobbs, NM 88240  
Phone:(575) 393-6161 Fax:(575) 393-0720  
**District II**  
811 S. First St., Artesia, NM 88210  
Phone:(575) 748-1283 Fax:(575) 748-9720  
**District III**  
1000 Rio Brazos Rd., Aztec, NM 87410  
Phone:(505) 334-6178 Fax:(505) 334-6170  
**District IV**  
1220 S. St Francis Dr., Santa Fe, NM 87505  
Phone:(505) 476-3470 Fax:(505) 476-3462

State of New Mexico  
Energy, Minerals and Natural Resources  
Oil Conservation Division  
1220 S. St Francis Dr.  
Santa Fe, NM 87505

CONDITIONS  
  
Action 292529

CONDITIONS

Operator: J.A. Drake Well Service Inc. 607 W Pinon Farmington, NM 87401	OGRID: 330485
	Action Number: 292529
	Action Type: [C-103] Sub. Plugging (C-103P)

CONDITIONS

Created By	Condition	Condition Date
jagarcia	None	12/26/2023