

<b>Well Name:</b> SAN JUAN 29-7 UNIT	<b>Well Location:</b> T29N / R7W / SEC 1 / NESW / 36.752384 / -107.526149	<b>County or Parish/State:</b> RIO ARRIBA / NM
<b>Well Number:</b> 85B	<b>Type of Well:</b> CONVENTIONAL GAS WELL	<b>Allottee or Tribe Name:</b>
<b>Lease Number:</b> NMSF078945	<b>Unit or CA Name:</b> SAN JUAN 29-7 UNIT--MV	<b>Unit or CA Number:</b> NMNM78417A
<b>US Well Number:</b> 3003925667	<b>Well Status:</b> Abandoned	<b>Operator:</b> HILCORP ENERGY COMPANY

Subsequent Report

**Sundry ID:** 2764734

**Type of Submission:** Subsequent Report

**Date Sundry Submitted:** 12/06/2023

**Date Operation Actually Began:** 11/29/2023

**Type of Action:** Plug and Abandonment

**Time Sundry Submitted:** 07:52

**Actual Procedure:** Hilcorp Energy Company plugged and abandoned the subject well on 12/04/2023 per the attached report.

SR Attachments

**Actual Procedure**

HILCORP\_SAN\_JUAN\_29\_7\_UNIT\_85B\_CBL\_20231206075228.pdf

SJ\_29\_7\_UNIT\_85B\_P\_A\_Subsequent\_20231206075209.pdf

Well Name: SAN JUAN 29-7 UNIT	Well Location: T29N / R7W / SEC 1 / NESW / 36.752384 / -107.526149	County or Parish/State: RIO ARRIBA / NM
Well Number: 85B	Type of Well: CONVENTIONAL GAS WELL	Allottee or Tribe Name:
Lease Number: NMSF078945	Unit or CA Name: SAN JUAN 29-7 UNIT--MV	Unit or CA Number: NMNM78417A
US Well Number: 3003925667	Well Status: Abandoned	Operator: HILCORP ENERGY COMPANY

Operator

I certify that the foregoing is true and correct. Title 18 U.S.C. Section 1001 and Title 43 U.S.C. Section 1212, make it a crime for any person knowingly and willfully to make to any department or agency of the United States any false, fictitious or fraudulent statements or representations as to any matter within its jurisdiction. Electronic submission of Sundry Notices through this system satisfies regulations requiring a

Operator Electronic Signature: TAMMY JONES	Signed on: DEC 06, 2023 07:52 AM
Name: HILCORP ENERGY COMPANY	
Title: Regulatory Compliance Specialist	
Street Address: 382 ROAD 3100	
City: AZTEC	State: NM
Phone: (505) 324-5185	
Email address: TAJONES@HILCORP.COM	

Field

Representative Name:		
Street Address:		
City:	State:	Zip:
Phone:		
Email address:		

BLM Point of Contact

BLM POC Name: MATTHEW H KADE	BLM POC Title: Petroleum Engineer
BLM POC Phone: 5055647736	BLM POC Email Address: MKADE@BLM.GOV
Disposition: Accepted	Disposition Date: 12/06/2023
Signature: Matthew Kade	

SAN JUAN 29-7 UNIT 85B

30.039.25667

PLUG &amp; ABANDON

**11/29/2023** – MIRU. CHECK PSI ON WELL. SITP 136#, SICP 149#, BH 0#, BD WELL. ND WH. NU AND FUNCTION TEST BOP'S. RU RIG FLOOR. PULL TBG HANGER. TOO H W/ TBG. LD TBG (TALLYING). SIW. SDFN. **(BLM REP ON LOCATION, JOSEPH MAESTAS)**

**11/30/2023** – CHECK PSI ON WELL. SITP 0#, SICP 76#, BH 0#, BD WELL. MU 4.5" BIT & SCRAPER, TIH 2.375" TBG TO 5740'. TOO H & LD BIT & SCRAPER. MU 4.5" CICR, TIH 2.375" TBG TO 5730'. SET CICR @ 5730'. PULL TENSION ON CICR LOAD TBG W/21 BBLS FW. PT TBG TO 800 PSI. GOOD TEST. **CEMENT PLUG #1 (CLIFF HOUSE PERFS)** 14 SX 3.4 BBL, 1.37, 14.8#, 6.64 GAL/SX. TOC @ 5730', BOC @ 5930'. 14 SKS BELOW CICR. DISPLACE 22.1 BBL, LD 23 JTS. TOO H 80 STDS OF 2.375" TBG. LD STINGER. MU 4.5" CICR, TIH 80 STDS OF 2.375" TBG TO 5040'. SET CICR @ 5040'. LW 25 BBLS FW, INJECTION RATE @ 2.4 BBLS/MIN, 64 PSI. **CEMENT PLUG #2 (LEWIS PERFS, CHACRA TOP)** 32 SX 7.8 BBL, 1.37, 14.8#, 6.64 GAL/SX. TOC @ 5040', BOC @ 5280'. 32 SKS BELOW CICR. DISPLACE 19.5 BBLS, LD 18 JTS. TOO H 12 STD OF 2.375" TBG. SIW. SDFN. **(BLM REP ON LOCATION JIMMY DOBSON)**

**12/01/2023** – CHECK PSI ON WELL. SITP 0#, SICP 0#, BH 0#, BDW 0 MIN. TIH 12 STDS OF 2.375" TBG, PU 6 JTS TO 4644'. RU CMTERS TO RIG FLOOR. PT PUMP & LINES. LW 180 BBLS, PUMP 200 BBLS. CIRC WELL CLEAN, PT 560 PSI FOR 30 MINS. & PASSED. **(BLM REP. JIMMY DOBSON & NMOCD APPROVED TO COMBINE 7" SHOE & PC TOP)**. **CEMENT PLUG #3 (7" SHOE & PC TOP)** 57 SX 13.9 BBL, 1.37, 14.8#, 6.64 GAL/SX. TOC @ 4175', BOC @ 4644'. DISPLACE 16.1 BBLS, LD 38 JTS. **CEMENT PLUG #4 (FRD TOP)** 25 SX 6.1 BBL, 1.37, 14.8#, 6.64 GAL/SX. TOC @ 3305', BOC @ 3455'. DISPLACE 12.7 BBLS, LD 24 JTS. **CEMENT PLUG #5 (KRD & OJO TOP)** 54 SX 13.1 BBL, 1.37, 14.8#, 6.64 GAL/SX. TOC @ 2385', BOC @ 2710'. DISPLACE 9.2 BBLS, LD 40 JTS. **CEMENT PLUG #6 (NACIMIENTO TOP)** 25 SX 6.1 BBL, 1.37, 14.8#, 6.64 GAL/SX. TOC @ 1311', BOC @ 1461'. DISPLACE 5 BBLS, LD 30 JTS. TOO H 8 STD OF 2.375" TBG. RU WIRELINE, **RUN CBL, 1300' TO SURFACE**. POOH & RD WIRELINE. SIW. SDFWND. **(BLM REP ON LOCATION JIMMY DOBSON)**

**12/04/2023** – **(REVISED PLUG DESIGN APPROVED BY KENNY RENNICK, BLM AND MONICA KUEHLING, NMOCD)** CHECK PSI ON WELL. SITP 0#, SICP 0#, BH 0#, BDW 0 MIN. RU W/L, RIH & PERF SQUEEZE HOLES @ 500'. POOH & RD W/L. INJECTION RATE 1.6BBLS/MIN @ 69 PSI. TIH 5 STDS. **CEMENT PLUG #7 (SURFACE SHOE)** 45 SX 10.9 BBL, 1.37, 14.8#, 6.64 GAL/SX. TOC @ 350', BOC @ 500'. 20 SXS OUTSIDE, 25 SXS INSIDE 7". DISPLACE 1.3 BBLS, LD 1 JTS. RO 4 BBLS. TOO H 5 STDS & WOC. MU TAG SUB TIH 5 STDS & TAG CEMENT PLUG #7 @ 369'. LD 10 JTS OF 2.375" TBG. RU W/L, RIH & PERF SQUEEZE HOLES @ 162'. POOH & RD W/L. INJECTION RATE 1.4BBLS/MIN @ 50 PSI. RU CEMENTERS. LW W/2 BBLS OF FW, PUMP 10 BBLS TO SURFACE. **PUMP CEMENT PLUG #8 (SURFACE PLUG)** 64 SXS 1.37, 14.8#, 6.64 GAL/SX. TOC @ 0', BOC @ 162'. RD RIG FLOOR. ND BOP. PREP TO CUT OFF WH (W.O.C.). **(NOTIFIED NMOCD MONICA KUEHLING AND BLM OF RIG MOVE FROM SAN JUAN 29-7 UNIT 85B TO GREEN COM #1)** CUT OFF WH. (TOC IN 7" 0'/TOC, & BH 0') WELD ON P&A MARKER, FILL CASING AND CELLAR WITH 16 SXS OF CEMENT. RD RIG AND EQUIPMENT **(RIG RELEASED @ 19:30 12/4/23)**

**BLM INSPECTOR – JIMMY DOBSON, WITNESSED PLUGGING OPERATIONS.**

**Tammy Jones**

---

**From:** Rennick, Kenneth G <krennick@blm.gov>  
**Sent:** Monday, December 4, 2023 9:39 AM  
**To:** Rustin Mikeska; Kuehling, Monica, EMNRD; Brice Clyde - (C)  
**Cc:** Max Weaver; Lee Murphy; Michael Wissing; Priscilla Shorty; Tammy Jones; Kade, Matthew H  
**Subject:** Re: [EXTERNAL] RE: Hilcorp P&A Variance Request: San Juan 29-7 Unit 85B

**CAUTION:** External sender. DO NOT open links or attachments from UNKNOWN senders.

The BLM finds the proposal appropriate.

Kenneth (Kenny) Rennick

Petroleum Engineer

Bureau of Land Management  
Farmington Field Office  
6251 College Blvd  
Farmington, NM 87402

Email: [krennick@blm.gov](mailto:krennick@blm.gov)  
Mobile & Text: 505.497.0019

---

**From:** Rustin Mikeska <rmikeska@hilcorp.com>  
**Sent:** Monday, December 4, 2023 9:30 AM  
**To:** Kuehling, Monica, EMNRD <monica.kuehling@emnrd.nm.gov>; Brice Clyde - (C) <Brice.Clyde@hilcorp.com>; Rennick, Kenneth G <krennick@blm.gov>  
**Cc:** Max Weaver <mweaver@hilcorp.com>; Lee Murphy <lmurphy@hilcorp.com>; Michael Wissing <mwissing@hilcorp.com>; Priscilla Shorty <pshorty@hilcorp.com>; Tammy Jones <tajones@hilcorp.com>; Kade, Matthew H <mkade@blm.gov>  
**Subject:** RE: [EXTERNAL] RE: Hilcorp P&A Variance Request: San Juan 29-7 Unit 85B

Good morning Monica/Kenny – We perf'd at 500' and obtained good circulation up annulus. We will execute the following plugs as proposed:

**San Juan 29-7 Unit 85B**

3003925667

**Completed:**

- Pump Plugs #1-#6 as approved.
- Pump circ holes in 7" csg @ 500' – established circ up annulus to surface.

**Proposal:**

1. **[Revised] Plug #7** (9-5/8" Shoe) | Circulate in 150' balanced cmt plug from 350' - 500' using 45sx (11.0 bbl) Class III cmt (1.37 yield).
2. *Execute remainder of design as NOI'd.*
3. Perf circ holes in 7" @ 162'.
4. **Plug #8** (Surface) | Circulate in 150' balanced cmt plug from 162' to surface 45sx (11.0 bbl) Class III cmt (1.37 yield).

5. Cut wellhead, weld P&A marker, confirm TOC, spot cmt as needed.

No bradenhead pressure observed on arrival 11/30/2023.

Thanks,

**Rustin Mikeska**

P&A – Petroleum Engineer

Cell: (254) 913-6777

Office: (713) 289-2931

[rmikeska@hilcorp.com](mailto:rmikeska@hilcorp.com)



---

**From:** Kuehling, Monica, EMNRD <[monica.kuehling@emnrd.nm.gov](mailto:monica.kuehling@emnrd.nm.gov)>

**Sent:** Monday, December 4, 2023 9:22 AM

**To:** Brice Clyde - (C) <[Brice.Clyde@hilcorp.com](mailto:Brice.Clyde@hilcorp.com)>; Rennick, Kenneth G <[krennick@blm.gov](mailto:krennick@blm.gov)>; Rustin Mikeska <[rmikeska@hilcorp.com](mailto:rmikeska@hilcorp.com)>

**Cc:** Max Weaver <[mweaver@hilcorp.com](mailto:mweaver@hilcorp.com)>; Lee Murphy <[lmurphy@hilcorp.com](mailto:lmurphy@hilcorp.com)>; Michael Wissing <[mwissing@hilcorp.com](mailto:mwissing@hilcorp.com)>; Priscilla Shorty <[pshorty@hilcorp.com](mailto:pshorty@hilcorp.com)>; Tammy Jones <[tajones@hilcorp.com](mailto:tajones@hilcorp.com)>; Kade, Matthew H <[mkade@blm.gov](mailto:mkade@blm.gov)>

**Subject:** RE: [EXTERNAL] RE: Hilcorp P&A Variance Request: San Juan 29-7 Unit 85B

**CAUTION:** External sender. DO NOT open links or attachments from UNKNOWN senders.

I know where you are I went by Rustin email from 7:45 this morning

---

**From:** Brice Clyde - (C) <[Brice.Clyde@hilcorp.com](mailto:Brice.Clyde@hilcorp.com)>

**Sent:** Monday, December 4, 2023 8:19 AM

**To:** Kuehling, Monica, EMNRD <[monica.kuehling@emnrd.nm.gov](mailto:monica.kuehling@emnrd.nm.gov)>; Rennick, Kenneth G <[krennick@blm.gov](mailto:krennick@blm.gov)>; Rustin Mikeska <[rmikeska@hilcorp.com](mailto:rmikeska@hilcorp.com)>

**Cc:** Max Weaver <[mweaver@hilcorp.com](mailto:mweaver@hilcorp.com)>; Lee Murphy <[lmurphy@hilcorp.com](mailto:lmurphy@hilcorp.com)>; Michael Wissing <[mwissing@hilcorp.com](mailto:mwissing@hilcorp.com)>; Priscilla Shorty <[pshorty@hilcorp.com](mailto:pshorty@hilcorp.com)>; Tammy Jones <[tajones@hilcorp.com](mailto:tajones@hilcorp.com)>; Kade, Matthew H <[mkade@blm.gov](mailto:mkade@blm.gov)>

**Subject:** Re: [EXTERNAL] RE: Hilcorp P&A Variance Request: San Juan 29-7 Unit 85B

We are on the San Juan 29-7 unit 85B. API #3003925667. No pressure on BH or 7" casing

Get [Outlook for Android](#)

---

**From:** Kuehling, Monica, EMNRD <[monica.kuehling@emnrd.nm.gov](mailto:monica.kuehling@emnrd.nm.gov)>

**Sent:** Monday, December 4, 2023 8:03:18 AM

**To:** Rennick, Kenneth G <[krennick@blm.gov](mailto:krennick@blm.gov)>; Rustin Mikeska <[rmikeska@hilcorp.com](mailto:rmikeska@hilcorp.com)>

**Cc:** Max Weaver <[mweaver@hilcorp.com](mailto:mweaver@hilcorp.com)>; Lee Murphy <[lmurphy@hilcorp.com](mailto:lmurphy@hilcorp.com)>; Michael Wissing <[mwissing@hilcorp.com](mailto:mwissing@hilcorp.com)>; Priscilla Shorty <[pshorty@hilcorp.com](mailto:pshorty@hilcorp.com)>; Tammy Jones <[tajones@hilcorp.com](mailto:tajones@hilcorp.com)>; Brice Clyde - (C) <[Brice.Clyde@hilcorp.com](mailto:Brice.Clyde@hilcorp.com)>; Kade, Matthew H <[mkade@blm.gov](mailto:mkade@blm.gov)>

**Subject:** RE: [EXTERNAL] RE: Hilcorp P&A Variance Request: San Juan 29-7 Unit 85B

**CAUTION:** External sender. DO NOT open links or attachments from UNKNOWN senders.

Is there pressure on the intermediate – let me know before continuing

Perforate at 500 feet - try to get something in – there is only 20 feet of cement below the surface shoe

Monica Kuehling  
Compliance Officer Supervisor  
Deputy Oil and Gas Inspector  
New Mexico Oil Conservation Division  
North District  
Office Phone: 505-334-6178 ext. 123  
Cell Phone: 505-320-0243  
Email - [monica.kuehling@emnrd.nm.gov](mailto:monica.kuehling@emnrd.nm.gov)

---

**From:** Rennick, Kenneth G <[krennick@blm.gov](mailto:krennick@blm.gov)>  
**Sent:** Monday, December 4, 2023 7:48 AM  
**To:** Rustin Mikeska <[rmikeska@hilcorp.com](mailto:rmikeska@hilcorp.com)>; Kuehling, Monica, EMNRD <[monica.kuehling@emnrd.nm.gov](mailto:monica.kuehling@emnrd.nm.gov)>  
**Cc:** Max Weaver <[mweaver@hilcorp.com](mailto:mweaver@hilcorp.com)>; Lee Murphy <[lmurphy@hilcorp.com](mailto:lmurphy@hilcorp.com)>; Michael Wissing <[mwissing@hilcorp.com](mailto:mwissing@hilcorp.com)>; Priscilla Shorty <[pshorty@hilcorp.com](mailto:pshorty@hilcorp.com)>; Tammy Jones <[tajones@hilcorp.com](mailto:tajones@hilcorp.com)>; Brice Clyde - (C) <[Brice.Clyde@hilcorp.com](mailto:Brice.Clyde@hilcorp.com)>; Kade, Matthew H <[mkade@blm.gov](mailto:mkade@blm.gov)>  
**Subject:** Re: [EXTERNAL] RE: Hilcorp P&A Variance Request: San Juan 29-7 Unit 85B

The BLM finds the proposal appropriate.

Get [Outlook for iOS](#)

---

**From:** Rustin Mikeska <[rmikeska@hilcorp.com](mailto:rmikeska@hilcorp.com)>  
**Sent:** Monday, December 4, 2023 7:44:04 AM  
**To:** Kuehling, Monica, EMNRD <[monica.kuehling@state.nm.us](mailto:monica.kuehling@state.nm.us)>; Rennick, Kenneth G <[krennick@blm.gov](mailto:krennick@blm.gov)>  
**Cc:** Max Weaver <[mweaver@hilcorp.com](mailto:mweaver@hilcorp.com)>; Lee Murphy <[lmurphy@hilcorp.com](mailto:lmurphy@hilcorp.com)>; Michael Wissing <[mwissing@hilcorp.com](mailto:mwissing@hilcorp.com)>; Priscilla Shorty <[pshorty@hilcorp.com](mailto:pshorty@hilcorp.com)>; Tammy Jones <[tajones@hilcorp.com](mailto:tajones@hilcorp.com)>; Brice Clyde - (C) <[Brice.Clyde@hilcorp.com](mailto:Brice.Clyde@hilcorp.com)>; Kade, Matthew H <[mkade@blm.gov](mailto:mkade@blm.gov)>  
**Subject:** [EXTERNAL] RE: Hilcorp P&A Variance Request: San Juan 29-7 Unit 85B

**This email has been received from outside of DOI - Use caution before clicking on links, opening attachments, or responding.**

Morning Monica/Kenny – Please review the following proposal based on CBL run 12/1/2023.

### San Juan 29-7 Unit 85B

3003925667

#### Completed:

- Pump Plugs #1-#6 as approved.
- Run CBL from 1,300' to surface.
  - Cement bond present at 9-5/8" shoe.

#### Proposal:

1. **[Revised] Plug #7** (9-5/8" Shoe) | Spot 150' inside cement plug from 390' - 540' using 25sx (6.1 bbl) Class III cmt (1.37 yield).

2. **[Revised] Plug #8** (Surface) | Cut wellhead, run 1" poly pipe into 9-5/8" x 7" annulus, fill annulus & 7" csg w/ 200' cmt using 59sx (14.4 bbl) Class III cmt (1.37 yield).

No bradenhead pressure observed on arrival 11/30/2023.

Thanks,

**Rustin Mikeska**

P&A – Petroleum Engineer

Cell: (254) 913-6777

Office: (713) 289-2931

[rmikeska@hilcorp.com](mailto:rmikeska@hilcorp.com)



---

**From:** Rustin Mikeska

**Sent:** Friday, December 1, 2023 9:23 AM

**To:** Kuehling, Monica, EMNRD <[monica.kuehling@state.nm.us](mailto:monica.kuehling@state.nm.us)>; [krennick@blm.gov](mailto:krennick@blm.gov)

**Cc:** Max Weaver <[mweaver@hilcorp.com](mailto:mweaver@hilcorp.com)>; Lee Murphy <[lmurphy@hilcorp.com](mailto:lmurphy@hilcorp.com)>; Michael Wissing <[mwissing@hilcorp.com](mailto:mwissing@hilcorp.com)>;

Priscilla Shorty <[pshorty@hilcorp.com](mailto:pshorty@hilcorp.com)>; Tammy Jones <[tajones@hilcorp.com](mailto:tajones@hilcorp.com)>; Brice Clyde - (C) <[Brice.Clyde@hilcorp.com](mailto:Brice.Clyde@hilcorp.com)>;

Kade, Matthew H <[mkade@blm.gov](mailto:mkade@blm.gov)>; [DPORCH@BLM.GOV](mailto:DPORCH@BLM.GOV)

**Subject:** Hilcorp P&A Variance Request: San Juan 29-7 Unit 85B

Good morning Monica,

We are proposing the following change to Plug #3 & #4 – combine to cover 4-1/2" liner top. BLM approves proposal.

## San Juan 29-7 Unit 85B

3003925667

Proposal:

1. **[Revised] Plug #3** (7" Liner Shoe, 4-1/2" Liner Top, PC Top) | Spot 469' cement plug using 57sx Class III cmt (1.37 yield).
2. Continue NOI as proposed.

No bradenhead pressure observed on arrival 11/30/2023.

Thanks,

**Rustin Mikeska**

P&A – Petroleum Engineer

Cell: (254) 913-6777

Office: (713) 289-2931

[rmikeska@hilcorp.com](mailto:rmikeska@hilcorp.com)



---

The information contained in this email message is confidential and may be legally privileged and is intended only for the use of the individual or entity named above. If you are not an intended recipient or if you have received this message in error, you are hereby notified that any dissemination, distribution, or copy of this email is strictly prohibited. If you have received this email in error, please immediately notify us by return email or telephone if the sender's phone number is listed above, then promptly and permanently delete this message.

While all reasonable care has been taken to avoid the transmission of viruses, it is the responsibility of the recipient to ensure that the onward transmission, opening, or use of this message and any attachments will not adversely affect its systems or data. No responsibility is accepted by the company in this regard and the recipient should carry out such virus and other checks as it considers appropriate.



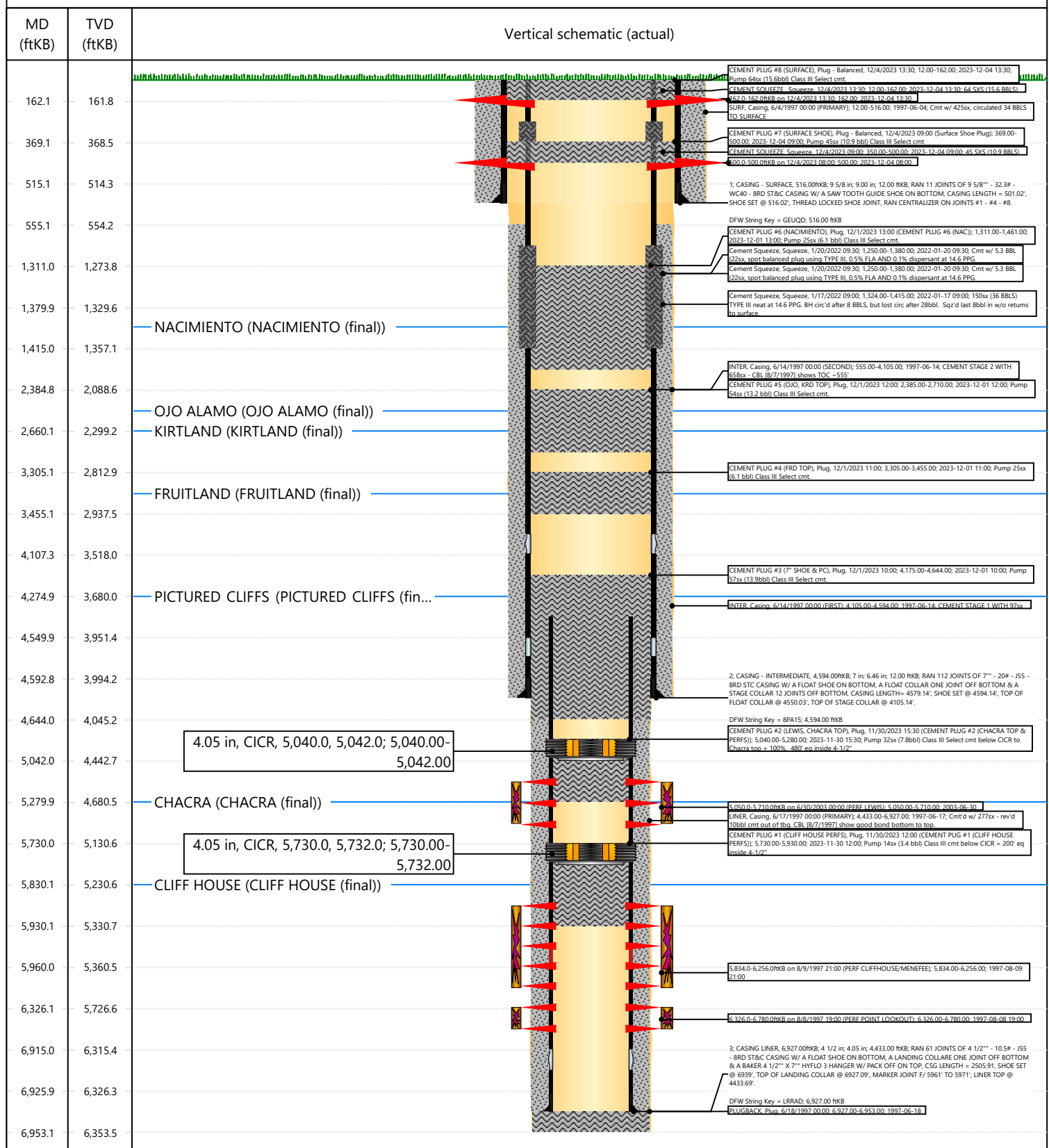


## Current Schematic - Version 3

Well Name: SAN JUAN 29-7 UNIT #85B

API / UWI 3003925667	Surface Legal Location 001-029N-007W-K	Field Name BLANCO MESAVERDE (PRORAT #0078	Route 1101	State/Province NEW MEXICO	Well Configuration Type DEVIATED
Ground Elevation (ft) 6,795.00	Original KB/RT Elevation (ft) 6,807.00	RKB to GL (ft) 12.00	KB-Casing Flange Distance (ft)	KB-Tubing Hanger Distance (ft)	

## Original Hole [DEVIATED]





**District I**  
1625 N. French Dr., Hobbs, NM 88240  
Phone:(575) 393-6161 Fax:(575) 393-0720  
**District II**  
811 S. First St., Artesia, NM 88210  
Phone:(575) 748-1283 Fax:(575) 748-9720  
**District III**  
1000 Rio Brazos Rd., Aztec, NM 87410  
Phone:(505) 334-6178 Fax:(505) 334-6170  
**District IV**  
1220 S. St Francis Dr., Santa Fe, NM 87505  
Phone:(505) 476-3470 Fax:(505) 476-3462

State of New Mexico  
Energy, Minerals and Natural Resources  
Oil Conservation Division  
1220 S. St Francis Dr.  
Santa Fe, NM 87505

CONDITIONS

Action 291724

CONDITIONS

Operator: HILCORP ENERGY COMPANY 1111 Travis Street Houston, TX 77002	OGRID: 372171
	Action Number: 291724
	Action Type: [C-103] Sub. Plugging (C-103P)

CONDITIONS

Created By	Condition	Condition Date
mkuehling	well plugged 12/4/2023	12/26/2023