

District I  
1625 N. French Dr., Hobbs, NM 88240  
District II  
811 S. First St., Artesia, NM 88210  
District III  
1000 Rio Brazos Road, Aztec, NM 87410  
District IV  
1220 S. St. Francis Dr., Santa Fe, NM 87505

State of New Mexico  
Energy Minerals and Natural Resources  
Department  
Oil Conservation Division  
1220 South St. Francis Dr.  
Santa Fe, NM 87505

Form C-144  
Revised April 3, 2017

For temporary pits, below-grade tanks, and multi-well fluid management pits, submit to the appropriate NMOCD District Office.  
For permanent pits submit to the Santa Fe Environmental Bureau office and provide a copy to the appropriate NMOCD District Office.

Pit, Below-Grade Tank, or  
Proposed Alternative Method Permit or Closure Plan Application

**BGT1**

- Type of action: ☐ Below grade tank registration  
☐ Permit of a pit or proposed alternative method  
☒ Closure of a pit, below-grade tank, or proposed alternative method  
☐ Modification to an existing permit/or registration  
☐ Closure plan only submitted for an existing permitted or non-permitted pit, below-grade tank, or proposed alternative method

**Instructions:** Please submit one application (Form C-144) per individual pit, below-grade tank or alternative request

Please be advised that approval of this request does not relieve the operator of liability should operations result in pollution of surface water, ground water or the environment. Nor does approval relieve the operator of its responsibility to comply with any other applicable governmental authority's rules, regulations or ordinances.

1.  
Operator: Reliable Production, LLC OGRID #: 371618  
Address: 407 Ouray Avenue, Farmington, NM 87410  
Facility or well name: Sangre De Cristo #2  
API Number: 30-045-20881 OCD Permit Number: \_\_\_\_\_  
U/L or Qtr/Qtr D Section 34 Township 30N Range 11W County: San Juan  
Center of Proposed Design: Latitude 36.7735176 Longitude -107.9843521 NAD83  
Surface Owner: ☒ Federal ☐ State ☐ Private ☐ Tribal Trust or Indian Allotment

2.  
☐ **Pit:** Subsection F, G or J of 19.15.17.11 NMAC  
Temporary: ☐ Drilling ☐ Workover  
☐ Permanent ☐ Emergency ☐ Cavitation ☐ P&A ☐ Multi-Well Fluid Management Low Chloride Drilling Fluid ☐ yes ☐ no  
☐ Lined ☐ Unlined Liner type: Thickness \_\_\_\_\_ mil ☐ LLDPE ☐ HDPE ☐ PVC ☐ Other \_\_\_\_\_  
☐ String-Reinforced  
Liner Seams: ☐ Welded ☐ Factory ☐ Other \_\_\_\_\_ Volume: \_\_\_\_\_ bbl Dimensions: L \_\_\_\_\_ x W \_\_\_\_\_ x D \_\_\_\_\_

3.  
☒ **Below-grade tank:** Subsection I of 19.15.17.11 NMAC  
Volume: 17 bbl Type of fluid: Produced Water  
Tank Construction material: Fiberglass  
☐ Secondary containment with leak detection ☐ Visible sidewalls, liner, 6-inch lift and automatic overflow shut-off  
☐ Visible sidewalls and liner ☒ Visible sidewalls only ☐ Other \_\_\_\_\_  
Liner type: Thickness \_\_\_\_\_ mil ☐ HDPE ☐ PVC ☐ Other \_\_\_\_\_

4.  
☐ **Alternative Method:**  
Submittal of an exception request is required. Exceptions must be submitted to the Santa Fe Environmental Bureau office for consideration of approval.

5.  
**Fencing:** Subsection D of 19.15.17.11 NMAC (Applies to permanent pits, temporary pits, and below-grade tanks)  
☐ Chain link, six feet in height, two strands of barbed wire at top (Required if located within 1000 feet of a permanent residence, school, hospital, institution, or church)  
☐ Four foot height, four strands of barbed wire evenly spaced between one and four feet  
☒ Alternate. Please specify \_\_\_\_\_

6.

**Netting:** Subsection E of 19.15.17.11 NMAC (*Applies to permanent pits and permanent open top tanks*)

- ☐ Screen ☐ Netting ☐ Other \_\_\_\_\_
- ☐ Monthly inspections (If netting or screening is not physically feasible)

7.

**Signs:** Subsection C of 19.15.17.11 NMAC

- ☐ 12"x 24", 2" lettering, providing Operator's name, site location, and emergency telephone numbers
- ☐ Signed in compliance with 19.15.16.8 NMAC

8.

**Variances and Exceptions:**

Justifications and/or demonstrations of equivalency are required. Please refer to 19.15.17 NMAC for guidance.

***Please check a box if one or more of the following is requested, if not leave blank:***

- ☐ Variance(s): Requests must be submitted to the appropriate division district for consideration of approval.
- ☐ Exception(s): Requests must be submitted to the Santa Fe Environmental Bureau office for consideration of approval.

9.

**Siting Criteria (regarding permitting):** 19.15.17.10 NMAC

***Instructions: The applicant must demonstrate compliance for each siting criteria below in the application. Recommendations of acceptable source material are provided below. Siting criteria does not apply to drying pads or above-grade tanks.***

**General siting**

**Ground water is less than 25 feet below the bottom of a low chloride temporary pit or below-grade tank.**

- ☐ NM Office of the State Engineer - iWATERS database search; ☐ USGS; ☐ Data obtained from nearby wells

☐ Yes ☐ No  
☐ NA

**Ground water is less than 50 feet below the bottom of a Temporary pit, permanent pit, or Multi-Well Fluid Management pit .**

NM Office of the State Engineer - iWATERS database search; USGS; Data obtained from nearby wells

☐ Yes ☐ No  
☐ NA

Within incorporated municipal boundaries or within a defined municipal fresh water well field covered under a municipal ordinance adopted pursuant to NMSA 1978, Section 3-27-3, as amended. **(Does not apply to below grade tanks)**

- Written confirmation or verification from the municipality; Written approval obtained from the municipality

☐ Yes ☐ No

Within the area overlying a subsurface mine. **(Does not apply to below grade tanks)**

- Written confirmation or verification or map from the NM EMNRD-Mining and Mineral Division

☐ Yes ☐ No

Within an unstable area. **(Does not apply to below grade tanks)**

- Engineering measures incorporated into the design; NM Bureau of Geology & Mineral Resources; USGS; NM Geological Society; Topographic map

☐ Yes ☐ No

Within a 100-year floodplain. **(Does not apply to below grade tanks)**

- FEMA map

☐ Yes ☐ No

**Below Grade Tanks**

Within 100 feet of a continuously flowing watercourse, significant watercourse, lakebed, sinkhole, wetland, or playa lake (measured from the ordinary high-water mark).

- Topographic map; Visual inspection (certification) of the proposed site

☐ Yes ☐ No

Within 200 horizontal feet of a spring or a fresh water well used for public or livestock consumption.

- NM Office of the State Engineer - iWATERS database search; Visual inspection (certification) of the proposed site

☐ Yes ☐ No

**Temporary Pit using Low Chloride Drilling Fluid** (maximum chloride content 15,000 mg/liter)

Within 100 feet of a continuously flowing watercourse, or any other significant watercourse or within 200 feet of any lakebed, sinkhole, or playa lake (measured from the ordinary high-water mark). (Applies to low chloride temporary pits.)

- Topographic map; Visual inspection (certification) of the proposed site

☐ Yes ☐ No

Within 300 feet from a occupied permanent residence, school, hospital, institution, or church in existence at the time of initial application.

- Visual inspection (certification) of the proposed site; Aerial photo; Satellite image

☐ Yes ☐ No

Within 200 horizontal feet of a spring or a private, domestic fresh water well used by less than five households for domestic or stock watering purposes, or 300feet of any other fresh water well or spring, in existence at the time of the initial application.

NM Office of the State Engineer - iWATERS database search; Visual inspection (certification) of the proposed site

☐ Yes ☐ No

Within 100 feet of a wetland.

- US Fish and Wildlife Wetland Identification map; Topographic map; Visual inspection (certification) of the proposed site

☐ Yes ☐ No

### **Temporary Pit Non-low chloride drilling fluid**

Within 300 feet of a continuously flowing watercourse, or any other significant watercourse, or within 200 feet of any lakebed, sinkhole, or playa lake (measured from the ordinary high-water mark).

- Topographic map; Visual inspection (certification) of the proposed site

☐ Yes ☐ No

Within 300 feet from a permanent residence, school, hospital, institution, or church in existence at the time of initial application.

- Visual inspection (certification) of the proposed site; Aerial photo; Satellite image

☐ Yes ☐ No

Within 500 horizontal feet of a spring or a private, domestic fresh water well used by less than five households for domestic or stock watering purposes, or 1000 feet of any other fresh water well or spring, in the existence at the time of the initial application;

- NM Office of the State Engineer - iWATERS database search; Visual inspection (certification) of the proposed site

☐ Yes ☐ No

Within 300 feet of a wetland.

- US Fish and Wildlife Wetland Identification map; Topographic map; Visual inspection (certification) of the proposed site

☐ Yes ☐ No

### **Permanent Pit or Multi-Well Fluid Management Pit**

Within 300 feet of a continuously flowing watercourse, or 200 feet of any other significant watercourse, or lakebed, sinkhole, or playa lake (measured from the ordinary high-water mark).

- Topographic map; Visual inspection (certification) of the proposed site

☐ Yes ☐ No

Within 1000 feet from a permanent residence, school, hospital, institution, or church in existence at the time of initial application.

- Visual inspection (certification) of the proposed site; Aerial photo; Satellite image

☐ Yes ☐ No

Within 500 horizontal feet of a spring or a fresh water well used for domestic or stock watering purposes, in existence at the time of initial application.

- NM Office of the State Engineer - iWATERS database search; Visual inspection (certification) of the proposed site

☐ Yes ☐ No

Within 500 feet of a wetland.

- US Fish and Wildlife Wetland Identification map; Topographic map; Visual inspection (certification) of the proposed site

☐ Yes ☐ No

10.

#### **Temporary Pits, Emergency Pits, and Below-grade Tanks Permit Application Attachment Checklist:** Subsection B of 19.15.17.9 NMAC

**Instructions:** Each of the following items must be attached to the application. Please indicate, by a check mark in the box, that the documents are attached.

- ☐ Hydrogeologic Report (Below-grade Tanks) - based upon the requirements of Paragraph (4) of Subsection B of 19.15.17.9 NMAC  
☐ Hydrogeologic Data (Temporary and Emergency Pits) - based upon the requirements of Paragraph (2) of Subsection B of 19.15.17.9 NMAC  
☐ Siting Criteria Compliance Demonstrations - based upon the appropriate requirements of 19.15.17.10 NMAC  
☐ Design Plan - based upon the appropriate requirements of 19.15.17.11 NMAC  
☐ Operating and Maintenance Plan - based upon the appropriate requirements of 19.15.17.12 NMAC  
☐ Closure Plan (Please complete Boxes 14 through 18, if applicable) - based upon the appropriate requirements of Subsection C of 19.15.17.9 NMAC and 19.15.17.13 NMAC

☐ Previously Approved Design (attach copy of design) API Number: \_\_\_\_\_ or Permit Number: \_\_\_\_\_

11.

#### **Multi-Well Fluid Management Pit Checklist:** Subsection B of 19.15.17.9 NMAC

**Instructions:** Each of the following items must be attached to the application. Please indicate, by a check mark in the box, that the documents are attached.

- ☐ Design Plan - based upon the appropriate requirements of 19.15.17.11 NMAC  
☐ Operating and Maintenance Plan - based upon the appropriate requirements of 19.15.17.12 NMAC  
☐ A List of wells with approved application for permit to drill associated with the pit.  
☐ Closure Plan (Please complete Boxes 14 through 18, if applicable) - based upon the appropriate requirements of Subsection C of 19.15.17.9 NMAC and 19.15.17.13 NMAC  
☐ Hydrogeologic Data - based upon the requirements of Paragraph (4) of Subsection B of 19.15.17.9 NMAC  
☐ Siting Criteria Compliance Demonstrations - based upon the appropriate requirements of 19.15.17.10 NMAC

☐ Previously Approved Design (attach copy of design) API Number: \_\_\_\_\_ or Permit Number: \_\_\_\_\_

12.

**Permanent Pits Permit Application Checklist:** Subsection B of 19.15.17.9 NMAC**Instructions:** Each of the following items must be attached to the application. Please indicate, by a check mark in the box, that the documents are attached.

- ☐ Hydrogeologic Report - based upon the requirements of Paragraph (1) of Subsection B of 19.15.17.9 NMAC  
☐ Siting Criteria Compliance Demonstrations - based upon the appropriate requirements of 19.15.17.10 NMAC  
☐ Climatological Factors Assessment  
☐ Certified Engineering Design Plans - based upon the appropriate requirements of 19.15.17.11 NMAC  
☐ Dike Protection and Structural Integrity Design - based upon the appropriate requirements of 19.15.17.11 NMAC  
☐ Leak Detection Design - based upon the appropriate requirements of 19.15.17.11 NMAC  
☐ Liner Specifications and Compatibility Assessment - based upon the appropriate requirements of 19.15.17.11 NMAC  
☐ Quality Control/Quality Assurance Construction and Installation Plan  
☐ Operating and Maintenance Plan - based upon the appropriate requirements of 19.15.17.12 NMAC  
☐ Freeboard and Overtopping Prevention Plan - based upon the appropriate requirements of 19.15.17.11 NMAC  
☐ Nuisance or Hazardous Odors, including H<sub>2</sub>S, Prevention Plan  
☐ Emergency Response Plan  
☐ Oil Field Waste Stream Characterization  
☐ Monitoring and Inspection Plan  
☐ Erosion Control Plan  
☐ Closure Plan - based upon the appropriate requirements of Subsection C of 19.15.17.9 NMAC and 19.15.17.13 NMAC

13.

**Proposed Closure:** 19.15.17.13 NMAC**Instructions:** Please complete the applicable boxes, Boxes 14 through 18, in regards to the proposed closure plan.

- Type: ☐ Drilling ☐ Workover ☐ Emergency ☐ Cavitation ☐ P&A ☐ Permanent Pit ☐ Below-grade Tank ☐ Multi-well Fluid Management Pit  
☐ Alternative
- Proposed Closure Method: ☐ Waste Excavation and Removal  
☐ Waste Removal (Closed-loop systems only)  
☐ On-site Closure Method (Only for temporary pits and closed-loop systems)  
☐ In-place Burial ☐ On-site Trench Burial  
☐ Alternative Closure Method

14.

**Waste Excavation and Removal Closure Plan Checklist:** (19.15.17.13 NMAC) **Instructions:** Each of the following items must be attached to the closure plan. Please indicate, by a check mark in the box, that the documents are attached.

- ☐ Protocols and Procedures - based upon the appropriate requirements of 19.15.17.13 NMAC  
☐ Confirmation Sampling Plan (if applicable) - based upon the appropriate requirements of Subsection C of 19.15.17.13 NMAC  
☐ Disposal Facility Name and Permit Number (for liquids, drilling fluids and drill cuttings)  
☐ Soil Backfill and Cover Design Specifications - based upon the appropriate requirements of Subsection H of 19.15.17.13 NMAC  
☐ Re-vegetation Plan - based upon the appropriate requirements of Subsection H of 19.15.17.13 NMAC  
☐ Site Reclamation Plan - based upon the appropriate requirements of Subsection H of 19.15.17.13 NMAC

15.

**Siting Criteria (regarding on-site closure methods only):** 19.15.17.10 NMAC**Instructions:** Each siting criteria requires a demonstration of compliance in the closure plan. Recommendations of acceptable source material are provided below. Requests regarding changes to certain siting criteria require justifications and/or demonstrations of equivalency. Please refer to 19.15.17.10 NMAC for guidance.

- |   |   |
|---|---|
| Ground water is less than 25 feet below the bottom of the buried waste.<br>- NM Office of the State Engineer - iWATERS database search; USGS; Data obtained from nearby wells   | <input type="checkbox"/> Yes <input type="checkbox"/> No<br><input type="checkbox"/> NA |
| Ground water is between 25-50 feet below the bottom of the buried waste<br>- NM Office of the State Engineer - iWATERS database search; USGS; Data obtained from nearby wells   | <input type="checkbox"/> Yes <input type="checkbox"/> No<br><input type="checkbox"/> NA |
| Ground water is more than 100 feet below the bottom of the buried waste.<br>- NM Office of the State Engineer - iWATERS database search; USGS; Data obtained from nearby wells  | <input type="checkbox"/> Yes <input type="checkbox"/> No<br><input type="checkbox"/> NA |
| Within 100 feet of a continuously flowing watercourse, or 200 feet of any other significant watercourse, lakebed, sinkhole, or playa lake (measured from the ordinary high-water mark).<br>- Topographic map; Visual inspection (certification) of the proposed site                        | <input type="checkbox"/> Yes <input type="checkbox"/> No                                |
| Within 300 feet from a permanent residence, school, hospital, institution, or church in existence at the time of initial application.<br>- Visual inspection (certification) of the proposed site; Aerial photo; Satellite image  | <input type="checkbox"/> Yes <input type="checkbox"/> No                                |
| Within 300 horizontal feet of a private, domestic fresh water well or spring used for domestic or stock watering purposes, in existence at the time of initial application.<br>- NM Office of the State Engineer - iWATERS database; Visual inspection (certification) of the proposed site | <input type="checkbox"/> Yes <input type="checkbox"/> No                                |
| Written confirmation or verification from the municipality; Written approval obtained from the municipality   | <input type="checkbox"/> Yes <input type="checkbox"/> No                                |
| Within 300 feet of a wetland.<br>US Fish and Wildlife Wetland Identification map; Topographic map; Visual inspection (certification) of the proposed site   | <input type="checkbox"/> Yes <input type="checkbox"/> No                                |
| Within incorporated municipal boundaries or within a defined municipal fresh water well field covered under a municipal ordinance   | <input type="checkbox"/> Yes <input type="checkbox"/> No                                |

adopted pursuant to NMSA 1978, Section 3-27-3, as amended.

- Written confirmation or verification from the municipality; Written approval obtained from the municipality

☐ Yes ☐ No

Within the area overlying a subsurface mine.

- Written confirmation or verification or map from the NM EMNRD-Mining and Mineral Division

☐ Yes ☐ No

Within an unstable area.

- Engineering measures incorporated into the design; NM Bureau of Geology & Mineral Resources; USGS; NM Geological Society; Topographic map

☐ Yes ☐ No

Within a 100-year floodplain.

- FEMA map

☐ Yes ☐ No

16.

**On-Site Closure Plan Checklist:** (19.15.17.13 NMAC) *Instructions: Each of the following items must be attached to the closure plan. Please indicate, by a check mark in the box, that the documents are attached.*

- ☐ Siting Criteria Compliance Demonstrations - based upon the appropriate requirements of 19.15.17.10 NMAC  
☐ Proof of Surface Owner Notice - based upon the appropriate requirements of Subsection E of 19.15.17.13 NMAC  
☐ Construction/Design Plan of Burial Trench (if applicable) based upon the appropriate requirements of Subsection K of 19.15.17.11 NMAC  
☐ Construction/Design Plan of Temporary Pit (for in-place burial of a drying pad) - based upon the appropriate requirements of 19.15.17.11 NMAC  
☐ Protocols and Procedures - based upon the appropriate requirements of 19.15.17.13 NMAC  
☐ Confirmation Sampling Plan (if applicable) - based upon the appropriate requirements of 19.15.17.13 NMAC  
☐ Waste Material Sampling Plan - based upon the appropriate requirements of 19.15.17.13 NMAC  
☐ Disposal Facility Name and Permit Number (for liquids, drilling fluids and drill cuttings or in case on-site closure standards cannot be achieved)  
☐ Soil Cover Design - based upon the appropriate requirements of Subsection H of 19.15.17.13 NMAC  
☐ Re-vegetation Plan - based upon the appropriate requirements of Subsection H of 19.15.17.13 NMAC  
☐ Site Reclamation Plan - based upon the appropriate requirements of Subsection H of 19.15.17.13 NMAC

17.

**Operator Application Certification:**

I hereby certify that the information submitted with this application is true, accurate and complete to the best of my knowledge and belief.

Name (Print): \_\_\_\_\_ Title: \_\_\_\_\_

Signature: \_\_\_\_\_ Date: \_\_\_\_\_

e-mail address: \_\_\_\_\_ Telephone: \_\_\_\_\_

18.

**OCD Approval:** ☐ Permit Application (including closure plan) ☒ Closure ~~Plan~~ ☐ OCD Conditions (see attachment)

OCD Representative Signature: Victoria Venegas Approval Date: 11/26/2023

Title: Environmental Specialist OCD Permit Number: BGT1

19.

**Closure Report (required within 60 days of closure completion):** 19.15.17.13 NMAC

*Instructions: Operators are required to obtain an approved closure plan prior to implementing any closure activities and submitting the closure report. The closure report is required to be submitted to the division within 60 days of the completion of the closure activities. Please do not complete this section of the form until an approved closure plan has been obtained and the closure activities have been completed.*

☐ Closure Completion Date: 12/19/2023

20.

**Closure Method:**

- ☒ Waste Excavation and Removal ☐ On-Site Closure Method ☐ Alternative Closure Method ☐ Waste Removal (Closed-loop systems only)  
☐ If different from approved plan, please explain.

21.

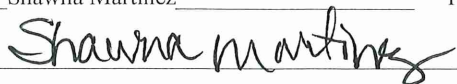
**Closure Report Attachment Checklist:** *Instructions: Each of the following items must be attached to the closure report. Please indicate, by a check mark in the box, that the documents are attached.*

- ☒ Proof of Closure Notice (surface owner and division)  
☐ Proof of Deed Notice (required for on-site closure for private land only)  
☐ Plot Plan (for on-site closures and temporary pits)  
☒ Confirmation Sampling Analytical Results (if applicable)  
☐ Waste Material Sampling Analytical Results (required for on-site closure)  
☒ Disposal Facility Name and Permit Number  
☒ Soil Backfilling and Cover Installation  
☐ Re-vegetation Application Rates and Seeding Technique  
☐ Site Reclamation (Photo Documentation)  
 On-site Closure Location: Latitude 36.7743301 Longitude -107.9850998 NAD: ☐ 1927 ☒ 1983

**Operator Closure Certification:**

I hereby certify that the information and attachments submitted with this closure report is true, accurate and complete to the best of my knowledge and belief. I also certify that the closure complies with all applicable closure requirements and conditions specified in the approved closure plan.

Name (Print): Shawna Martinez Title: Regulatory Specialist

Signature:  Date: 12/19/2023

e-mail address: shawna@walsheng.net Telephone: 505-327-4892

Shawna Martinez

**From:** Venegas, Victoria, EMNRD <Victoria.Venegas@emnrd.nm.gov>  
**Sent:** Tuesday, December 5, 2023 8:21 AM  
**To:** Shawna Martinez  
**Cc:** Michael Dean; Clay Green; Arleen Smith; John Hampton Jr.  
**Subject:** RE: [EXTERNAL] 72 Hour Notification BGT Removal Sangre De Cristo #2 API# 30-045-20881

Good morning,  
The 72-hour notice for BGT removal has been received and noted in OCD e-Permitting.  
Thank you,

**Victoria Venegas** • Environmental Specialist  
Environmental Bureau  
EMNRD - Oil Conservation Division  
506 W. Texas Ave. Artesia, NM 88210  
(575) 909-0269 | [Victoria.Venegas@emnrd.nm.gov](mailto:Victoria.Venegas@emnrd.nm.gov)  
<https://www.emnrd.nm.gov/ocd/>



**From:** Shawna Martinez <shawna@walsheng.net>  
**Sent:** Tuesday, December 5, 2023 8:16 AM  
**To:** Venegas, Victoria, EMNRD <Victoria.Venegas@emnrd.nm.gov>  
**Cc:** Michael Dean <michael.dean@walsheng.net>; Clay Green <clay@walsheng.net>; Arleen Smith <arleen@walsheng.net>; John Hampton Jr. <jdhampton@walsheng.net>  
**Subject:** [EXTERNAL] 72 Hour Notification BGT Removal Sangre De Cristo #2 API# 30-045-20881

CAUTION: This email originated outside of our organization. Exercise caution prior to clicking on links or opening attachments.

Good Morning,

Walsh Engineering on behalf of Reliable Production is providing 72-hour notification for the removal of the BGT on the Sangre De Cristo #2. This is scheduled for Friday, December 8<sup>th</sup>, 2023 @ 9:00am.

# 30-045-20881 SANGRE DE CRISTO #002 [317526]

## General Well Information

Operator: [371618] RELIABLE PRODUCTION LLC  
Status: Active  
Well Type: Gas  
Work Type: New  
  
Surface Location: D-34-30N-11W Lot: 4 960 FNL 800 FWL  
Lat/Long: 36.7735176,-107.9843521 NAD83  
GL Elevation: 5869  
KB Elevation:  
DF Elevation:

Thank You,

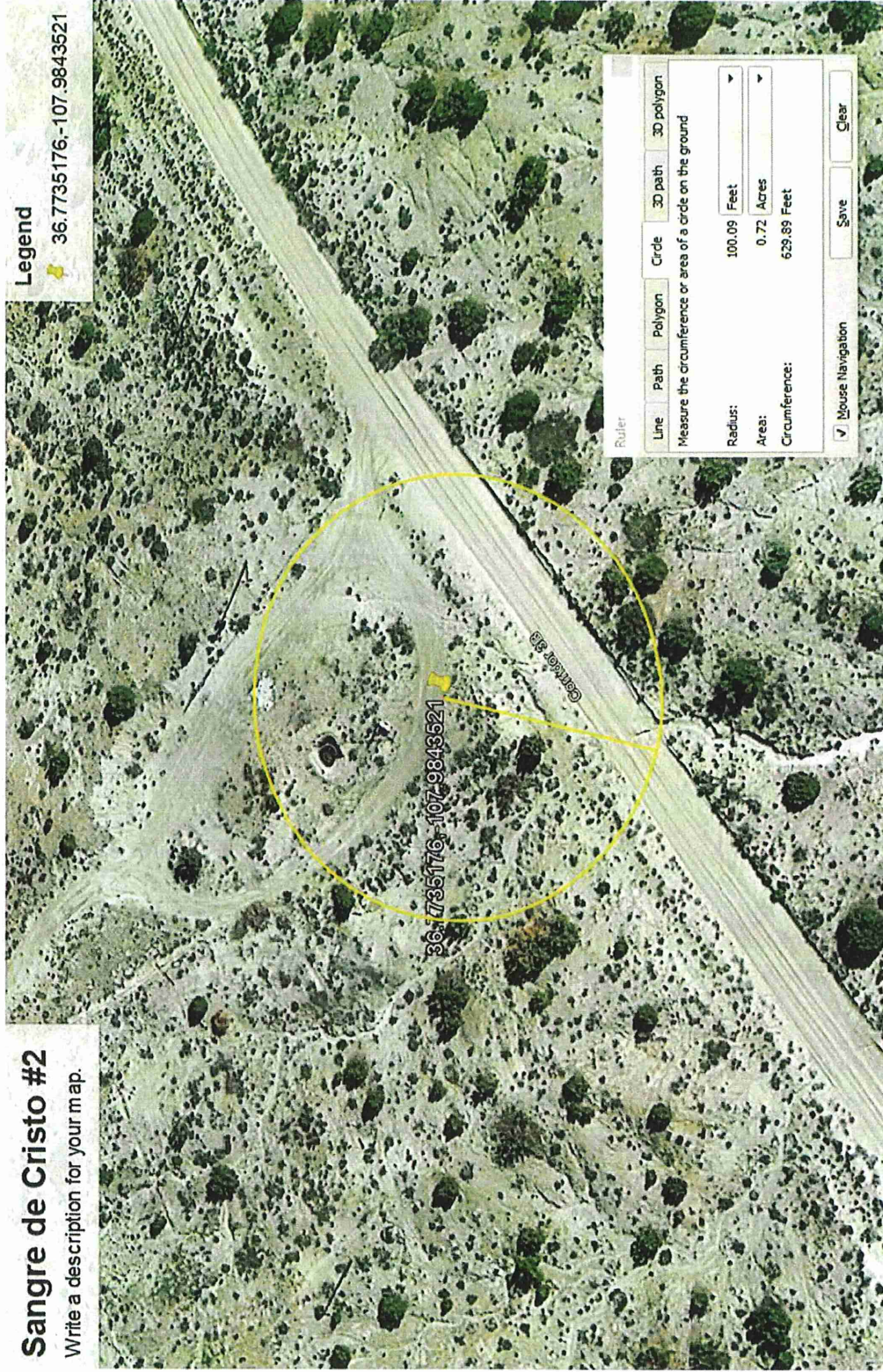


Shawna Martinez  
Regulatory Specialist  
Walsh Engineering | Epic Energy, LLC  
O:505-327-4892 | C:505-635-9042  
[Shawna@walsheng.net](mailto:Shawna@walsheng.net)

## 30-045-20881 SANGRE de CRISTO # 2 – Siting Criteria

### Sangre de Cristo #2

Write a description for your map.





# New Mexico Office of the State Engineer

## Point of Diversion Summary

(quarters are 1=NW 2=NE 3=SW 4=SE)

(quarters are smallest to largest)

(NAD83 UTM in meters)

Well Tag	POD Number	Q64	Q16	Q4	Sec	Tws	Rng	X	Y
	SJ 03841 POD10			3	34	30N	11W	261236	4075354

Driller License:

Driller Company:

Driller Name:

WD1210 MATTHEW CAIN, NATIONAL EWP INC.

Drill Start Date:

07/18/2013

Drill Finish Date:

07/19/2013

Plug Date:

Log File Date:

08/08/2013

PCW Rcv Date:

Source:

Shallow

Pump Type:

Pipe Discharge Size:

Estimated Yield:

0 GPM

Casing Size:

2.00

Depth Well:

42 feet

Depth Water:

30 feet

Water Bearing Stratifications:

Top

Bottom

Description

0

42

Sandstone/Gravel/Conglomerate

Casing Perforations:

Top

Bottom

22

42

The data is furnished by the NMOSE/ISC and is accepted by the recipient with the expressed understanding that the OSE/ISC make no warranties, expressed or implied, concerning the accuracy, completeness, reliability, usability, or suitability for any particular purpose of the data.

10/30/23 10:32 AM POINT OF DIVERSION SUMMARY



# New Mexico Office of the State Engineer

## Water Column/Average Depth to Water

(A CLW#### in the POD suffix indicates the POD has been replaced & no longer serves a water right file.) (R=POD has been replaced, O=orphaned, C=the file is closed) (quarters are 1=NW 2=NE 3=SW 4=SE) (quarters are smallest to largest) (NAD83 UTM in meters) (In feet)

POD Number	Code	Sub-basin	County	Q	Q	Q	Sec	Tws	Rng	X	Y	DepthWell	DepthWater	Water Column	
<a href="#">SJ 03841 POD10</a>	SJ	SJ	SJ	64	16	4	3	34	30N	11W	261236	4075354	42	30	12
Average Depth to Water:													30 feet		
Minimum Depth:													30 feet		
Maximum Depth:													30 feet		

Record Count: 1

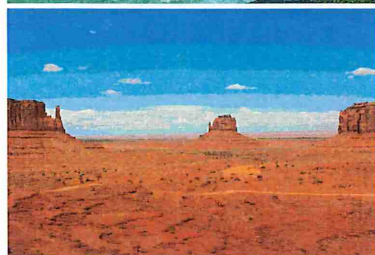
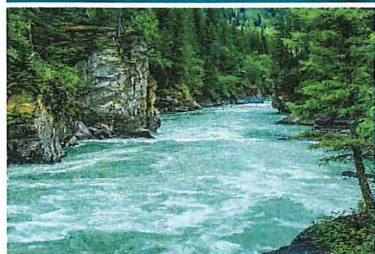
PLSS Search:

Section(s): 34 Township: 30N Range: 11W

The data is furnished by the NMOSE/ISC and is accepted by the recipient with the expressed understanding that the OSE/ISC make no warranties, expressed or implied, concerning the accuracy, completeness, reliability, usability, or suitability for any particular purpose of the data.

10/30/23 10:30 AM WATER COLUMN/ AVERAGE DEPTH TO WATER

Report to:  
Clay Green



5796 U.S. Hwy 64  
Farmington, NM 87401

Phone: (505) 632-1881  
Envirotech-inc.com



# envirotech

*Practical Solutions for a Better Tomorrow*

## Analytical Report

### Reliable Production

Project Name: BGT Sampling

Work Order: E312046

Job Number: 20015-C-0001

Received: 12/8/2023

Revision: 1

Report Reviewed By:

Walter Hinchman  
Laboratory Director  
12/15/23

Envirotech Inc. certifies the test results meet all requirements of TNI unless noted otherwise.  
Statement of Data Authenticity: Envirotech Inc, attests the data reported has not been altered in any way.  
Partial or incomplete reproduction of this report is prohibited, unless approved by Envirotech Inc.  
Envirotech Inc, holds the Utah TNI certification NM00979 for data reported.  
Envirotech Inc, holds the Texas TNI certification T104704557 for data reported.

Date Reported: 12/15/23

Clay Green  
407 Ouray Ave  
Farmington, NM 87401



Project Name: BGT Sampling  
Workorder: E312046  
Date Received: 12/8/2023 10:18:00AM

Clay Green,

Thank you for choosing Envirotech, Inc. as your analytical testing laboratory for the sample(s) received on, 12/8/2023 10:18:00AM, under the Project Name: BGT Sampling.

The analytical test results summarized in this report with the Project Name: BGT Sampling apply to the individual samples collected, identified and submitted bearing the project name on the enclosed chain-of-custody. Subcontracted sample analyses not conducted by Envirotech, Inc., are attached in full as issued by the subcontract laboratory.

Please review the Chain-of-Custody (COC) and Sample Receipt Checklist (SRC) for any issues regarding sample receipt temperature, containers, preservation etc. To best understand your test results, review the entire report summarizing your sample data and the associated quality control batch data.

All reported data in this analytical report were analyzed according to the referenced method(s) and are in compliance with the latest NELAC/TNI standards, unless otherwise noted. Samples or analytical quality control parameters not meeting specific QC criteria are qualified with a data flag. Data flag definitions are located in the Notes and Definitions section of this analytical report.

If you have any questions concerning this report, please feel free to contact Envirotech, Inc.

Respectfully,

**Walter Hinchman**  
Laboratory Director  
Office: 505-632-1881  
Cell: 775-287-1762  
[whinchman@envirotech-inc.com](mailto:whinchman@envirotech-inc.com)

**Raina Schwanz**  
Laboratory Administrator  
Office: 505-632-1881  
[rainaschwanz@envirotech-inc.com](mailto:rainaschwanz@envirotech-inc.com)

**Alexa Michaels**  
Sample Custody Officer  
Office: 505-632-1881  
[labadmin@envirotech-inc.com](mailto:labadmin@envirotech-inc.com)

Field Offices:

**Southern New Mexico Area**

**Lynn Jarboe**  
Laboratory Technical Representative  
Office: 505-421-LABS(5227)  
Cell: 505-320-4759  
[ljjarboe@envirotech-inc.com](mailto:ljjarboe@envirotech-inc.com)

**Michelle Golzales**  
Client Representative  
Office: 505-421-LABS(5227)  
Cell: 505-947-8222  
[mgonzales@envirotech-inc.com](mailto:mgonzales@envirotech-inc.com)

Envirotech Web Address: [www.envirotech-inc.com](http://www.envirotech-inc.com)

# Table of Contents

Title Page	1
Cover Page	2
Table of Contents	3
Sample Summary	4
Sample Data	5
Sangre De Cristo #2 BGT	5
Sangre De Cristo #25 BGT	6
QC Summary Data	7
QC - Volatile Organics by EPA 8021B	7
QC - Nonhalogenated Organics by EPA 8015D - GRO	8
QC - Nonhalogenated Organics by EPA 8015D - DRO/ORO	9
QC - Anions by EPA 300.0/9056A	10
Definitions and Notes	11
Chain of Custody etc.	12

Page 15 of 38

Received by OCD: 12/20/2023 7:08:33 AM

Sample Summary

Reliable Production	Project Name:	BGT Sampling	Reported:
407 Ouray Ave	Project Number:	20015-C-0001	
Farmington NM, 87401	Project Manager:	Clay Green	12/15/23 11:24

Client Sample ID	Lab Sample ID	Matrix	Sampled	Received	Container
Sangre De Cristo #2 BGT	E312046-01A	Soil	12/08/23	12/08/23	Glass Jar, 4 oz.
Sangre De Cristo #25 BGT	E312046-02A	Soil	12/08/23	12/08/23	Glass Jar, 4 oz.



Released to Imaging: 12/26/2023 11:40:29 AM

## Sample Data

Reliable Production  
407 Ouray Ave  
Farmington NM, 87401

Project Name: BGT Sampling  
Project Number: 20015-C-0001  
Project Manager: Clay Green

**Reported:**  
12/15/2023 11:24:53AM

### Sangre De Cristo #2 BGT

E312046-01

Analyte	Result	Reporting Limit	Dilution	Prepared	Analyzed	Notes
<b>Volatile Organics by EPA 8021B</b>						
	mg/kg	mg/kg		Analyst: RKS		Batch: 2349098
Benzene	ND	0.0250	1	12/08/23	12/12/23	
Ethylbenzene	ND	0.0250	1	12/08/23	12/12/23	
Toluene	ND	0.0250	1	12/08/23	12/12/23	
o-Xylene	ND	0.0250	1	12/08/23	12/12/23	
p,m-Xylene	ND	0.0500	1	12/08/23	12/12/23	
Total Xylenes	ND	0.0250	1	12/08/23	12/12/23	
Surrogate: 4-Bromochlorobenzene-PID	95.6 %	70-130		12/08/23	12/12/23	
<b>Nonhalogenated Organics by EPA 8015D - GRO</b>						
	mg/kg	mg/kg		Analyst: RKS		Batch: 2349098
Gasoline Range Organics (C6-C10)	ND	20.0	1	12/08/23	12/12/23	
Surrogate: 1-Chloro-4-fluorobenzene-FID	88.0 %	70-130		12/08/23	12/12/23	
<b>Nonhalogenated Organics by EPA 8015D - DRO/ORO</b>						
	mg/kg	mg/kg		Analyst: KM		Batch: 2350045
Diesel Range Organics (C10-C28)	ND	25.0	1	12/13/23	12/14/23	
Oil Range Organics (C28-C36)	ND	50.0	1	12/13/23	12/14/23	
Surrogate: n-Nonane	80.4 %	50-200		12/13/23	12/14/23	
<b>Anions by EPA 300.0/9056A</b>						
	mg/kg	mg/kg		Analyst: BA		Batch: 2350008
Chloride	ND	20.0	1	12/11/23	12/12/23	



## Sample Data

Reliable Production  
407 Ouray Ave  
Farmington NM, 87401

Project Name: BGT Sampling  
Project Number: 20015-C-0001  
Project Manager: Clay Green

**Reported:**  
12/15/2023 11:24:53AM

### Sangre De Cristo #25 BGT

E312046-02

Analyte	Result	Reporting Limit	Dilution	Prepared	Analyzed	Notes
<b>Volatile Organics by EPA 8021B</b>						
	mg/kg	mg/kg		Analyst: RKS		Batch: 2349098
Benzene	ND	0.0250	1	12/08/23	12/12/23	
Ethylbenzene	ND	0.0250	1	12/08/23	12/12/23	
Toluene	ND	0.0250	1	12/08/23	12/12/23	
o-Xylene	ND	0.0250	1	12/08/23	12/12/23	
p,m-Xylene	ND	0.0500	1	12/08/23	12/12/23	
Total Xylenes	ND	0.0250	1	12/08/23	12/12/23	
<i>Surrogate: 4-Bromochlorobenzene-PID</i>						
	96.2 %	70-130		12/08/23	12/12/23	
<b>Nonhalogenated Organics by EPA 8015D - GRO</b>						
	mg/kg	mg/kg		Analyst: RKS		Batch: 2349098
Gasoline Range Organics (C6-C10)	ND	20.0	1	12/08/23	12/12/23	
<i>Surrogate: 1-Chloro-4-fluorobenzene-FID</i>						
	88.3 %	70-130		12/08/23	12/12/23	
<b>Nonhalogenated Organics by EPA 8015D - DRO/ORO</b>						
	mg/kg	mg/kg		Analyst: KM		Batch: 2350045
Diesel Range Organics (C10-C28)	ND	25.0	1	12/13/23	12/14/23	
Oil Range Organics (C28-C36)	ND	50.0	1	12/13/23	12/14/23	
<i>Surrogate: n-Nonane</i>						
	82.7 %	50-200		12/13/23	12/14/23	
<b>Anions by EPA 300.0/9056A</b>						
	mg/kg	mg/kg		Analyst: BA		Batch: 2350008
Chloride	ND	20.0	1	12/11/23	12/12/23	



# QC Summary Data

Reliable Production 407 Ouray Ave Farmington NM, 87401	Project Name: BGT Sampling Project Number: 20015-C-0001 Project Manager: Clay Green	Reported: 12/15/2023 11:24:53AM
--	---	------------------------------------

## Volatile Organics by EPA 8021B

Analyst: RKS

Analyte	Result mg/kg	Reporting Limit mg/kg	Spike Level mg/kg	Source Result mg/kg	Rec %	Rec Limits %	RPD %	RPD Limit %	Notes
---------	-----------------	-----------------------------	-------------------------	---------------------------	----------	--------------------	----------	-------------------	-------

### Blank (2349098-BLK1)

Prepared: 12/08/23 Analyzed: 12/12/23

Benzene	ND	0.0250							
Ethylbenzene	ND	0.0250							
Toluene	ND	0.0250							
o-Xylene	ND	0.0250							
p,m-Xylene	ND	0.0500							
Total Xylenes	ND	0.0250							
Surrogate: 4-Bromochlorobenzene-PID	7.16		8.00		89.4	70-130			

### LCS (2349098-BS1)

Prepared: 12/08/23 Analyzed: 12/12/23

Benzene	4.77	0.0250	5.00		95.4	70-130			
Ethylbenzene	5.01	0.0250	5.00		100	70-130			
Toluene	5.09	0.0250	5.00		102	70-130			
o-Xylene	5.16	0.0250	5.00		103	70-130			
p,m-Xylene	10.3	0.0500	10.0		103	70-130			
Total Xylenes	15.5	0.0250	15.0		103	70-130			
Surrogate: 4-Bromochlorobenzene-PID	7.26		8.00		90.8	70-130			

### Matrix Spike (2349098-MS1)

Source: E312044-27

Prepared: 12/08/23 Analyzed: 12/12/23

Benzene	4.69	0.0250	5.00	ND	93.7	54-133			
Ethylbenzene	4.94	0.0250	5.00	ND	98.9	61-133			
Toluene	5.01	0.0250	5.00	ND	100	61-130			
o-Xylene	5.09	0.0250	5.00	ND	102	63-131			
p,m-Xylene	10.2	0.0500	10.0	ND	102	63-131			
Total Xylenes	15.3	0.0250	15.0	ND	102	63-131			
Surrogate: 4-Bromochlorobenzene-PID	7.33		8.00		91.6	70-130			

### Matrix Spike Dup (2349098-MSD1)

Source: E312044-27

Prepared: 12/08/23 Analyzed: 12/12/23

Benzene	4.36	0.0250	5.00	ND	87.1	54-133	7.30	20	
Ethylbenzene	4.64	0.0250	5.00	ND	92.8	61-133	6.38	20	
Toluene	4.68	0.0250	5.00	ND	93.6	61-130	6.74	20	
o-Xylene	4.77	0.0250	5.00	ND	95.3	63-131	6.63	20	
p,m-Xylene	9.58	0.0500	10.0	ND	95.8	63-131	6.23	20	
Total Xylenes	14.3	0.0250	15.0	ND	95.6	63-131	6.36	20	
Surrogate: 4-Bromochlorobenzene-PID	7.29		8.00		91.1	70-130			



## QC Summary Data

Reliable Production  
407 Ouray Ave  
Farmington NM, 87401

Project Name: BGT Sampling  
Project Number: 20015-C-0001  
Project Manager: Clay Green

Reported:  
12/15/2023 11:24:53AM

### Nonhalogenated Organics by EPA 8015D - GRO

Analyst: RKS

Analyte	Result mg/kg	Reporting Limit mg/kg	Spike Level mg/kg	Source Result mg/kg	Rec %	Rec Limits %	RPD %	RPD Limit %	Notes
---------	-----------------	-----------------------------	-------------------------	---------------------------	----------	--------------------	----------	-------------------	-------

#### Blank (2349098-BLK1)

Prepared: 12/08/23 Analyzed: 12/12/23

Gasoline Range Organics (C6-C10)	ND	20.0							
Surrogate: 1-Chloro-4-fluorobenzene-FID	7.09		8.00		88.6	70-130			

#### LCS (2349098-BS2)

Prepared: 12/08/23 Analyzed: 12/12/23

Gasoline Range Organics (C6-C10)	41.8	20.0	50.0		83.7	70-130			
Surrogate: 1-Chloro-4-fluorobenzene-FID	7.24		8.00		90.5	70-130			

#### Matrix Spike (2349098-MS2)

Source: E312044-27

Prepared: 12/08/23 Analyzed: 12/12/23

Gasoline Range Organics (C6-C10)	41.9	20.0	50.0	ND	83.8	70-130			
Surrogate: 1-Chloro-4-fluorobenzene-FID	7.21		8.00		90.1	70-130			

#### Matrix Spike Dup (2349098-MSD2)

Source: E312044-27

Prepared: 12/08/23 Analyzed: 12/12/23

Gasoline Range Organics (C6-C10)	42.6	20.0	50.0	ND	85.2	70-130	1.69	20	
Surrogate: 1-Chloro-4-fluorobenzene-FID	7.24		8.00		90.5	70-130			



## QC Summary Data

Reliable Production	Project Name:	BGT Sampling	Reported:
407 Ouray Ave	Project Number:	20015-C-0001	
Farmington NM, 87401	Project Manager:	Clay Green	12/15/2023 11:24:53AM

### Nonhalogenated Organics by EPA 8015D - DRO/ORO

Analyst: KM

Analyte	Result mg/kg	Reporting Limit mg/kg	Spike Level mg/kg	Source Result mg/kg	Rec %	Rec Limits %	RPD %	RPD Limit %	Notes
---------	-----------------	-----------------------------	-------------------------	---------------------------	----------	--------------------	----------	-------------------	-------

**Blank (2350045-BLK1)**

Prepared: 12/13/23 Analyzed: 12/14/23

Diesel Range Organics (C10-C28)	ND	25.0							
Oil Range Organics (C28-C36)	ND	50.0							
Surrogate: n-Nonane	42.2		50.0		84.4	50-200			

**LCS (2350045-BS1)**

Prepared: 12/13/23 Analyzed: 12/14/23

Diesel Range Organics (C10-C28)	219	25.0	250		87.7	38-132			
Surrogate: n-Nonane	40.8		50.0		81.6	50-200			

**Matrix Spike (2350045-MS1)**

Source: E312048-03

Prepared: 12/13/23 Analyzed: 12/14/23

Diesel Range Organics (C10-C28)	226	25.0	250	ND	90.5	38-132			
Surrogate: n-Nonane	40.2		50.0		80.3	50-200			

**Matrix Spike Dup (2350045-MSD1)**

Source: E312048-03

Prepared: 12/13/23 Analyzed: 12/14/23

Diesel Range Organics (C10-C28)	218	25.0	250	ND	87.4	38-132	3.49	20	
Surrogate: n-Nonane	42.6		50.0		85.1	50-200			



## QC Summary Data

Reliable Production 407 Ouray Ave Farmington NM, 87401	Project Name: BGT Sampling Project Number: 20015-C-0001 Project Manager: Clay Green	Reported: 12/15/2023 11:24:53AM
--	---	------------------------------------

### Anions by EPA 300.0/9056A

Analyst: BA

Analyte	Result mg/kg	Reporting Limit mg/kg	Spike Level mg/kg	Source Result mg/kg	Rec %	Rec Limits %	RPD %	RPD Limit %	Notes
---------	-----------------	-----------------------------	-------------------------	---------------------------	----------	--------------------	----------	-------------------	-------

#### Blank (2350008-BLK1)

Prepared: 12/11/23 Analyzed: 12/12/23

Chloride	ND	20.0							
----------	----	------	--	--	--	--	--	--	--

#### LCS (2350008-BS1)

Prepared: 12/11/23 Analyzed: 12/12/23

Chloride	245	20.0	250		98.2	90-110			
----------	-----	------	-----	--	------	--------	--	--	--

#### Matrix Spike (2350008-MS1)

Source: E312044-22

Prepared: 12/11/23 Analyzed: 12/12/23

Chloride	251	20.0	250	ND	100	80-120			
----------	-----	------	-----	----	-----	--------	--	--	--

#### Matrix Spike Dup (2350008-MSD1)

Source: E312044-22

Prepared: 12/11/23 Analyzed: 12/12/23

Chloride	250	20.0	250	ND	100	80-120	0.321	20	
----------	-----	------	-----	----	-----	--------	-------	----	--

#### QC Summary Report Comment:

Calculations are based off of the raw (non-rounded) data. However, for reporting purposes all QC data is rounded to three significant figures. Therefore, hand calculated values may differ slightly.



Definitions and Notes

Reliable Production	Project Name:	BGT Sampling	
407 Ouray Ave	Project Number:	20015-C-0001	Reported:
Farmington NM, 87401	Project Manager:	Clay Green	12/15/23 11:24

- ND Analyte NOT DETECTED at or above the reporting limit
  - NR Not Reported
  - RPD Relative Percent Difference
  - DNI Did Not Ignite
  - DNR Did not react with the addition of acid or base.
- Note (1): Methods marked with \*\* are non-accredited methods.
- Note (2): Soil data is reported on an "as received" weight basis, unless reported otherwise.

Page 12 of 13

Page 24 of 38  
Received by OCD: 12/20/2023 7:08:33 AM  
Released to Imaging: 12/26/2023 11:40:29 AM

# Envirotech Analytical Laboratory

Printed: 12/11/2023 11:49:51AM

## Sample Receipt Checklist (SRC)

Instructions: Please take note of any NO checkmarks.

If we receive no response concerning these items within 24 hours of the date of this notice, all the samples will be analyzed as requested.

Client:	Reliable Production	Date Received:	12/08/23 10:18	Work Order ID:	E312046
Phone:	(505) 801-8508	Date Logged In:	12/08/23 13:02	Logged In By:	Alexa Michaels
Email:	clay@walsheng.net	Due Date:	12/15/23 17:00 (5 day TAT)		

### Chain of Custody (COC)

1. Does the sample ID match the COC? Yes
2. Does the number of samples per sampling site location match the COC? Yes
3. Were samples dropped off by client or carrier? Yes
4. Was the COC complete, i.e., signatures, dates/times, requested analyses? Yes
5. Were all samples received within holding time? Yes

Note: Analysis, such as pH which should be conducted in the field, i.e., 15 minute hold time, are not included in this discussion.

Carrier: Clay Green

### Sample Turn Around Time (TAT)

6. Did the COC indicate standard TAT, or Expedited TAT? Yes

### Sample Cooler

7. Was a sample cooler received? Yes
8. If yes, was cooler received in good condition? Yes
9. Was the sample(s) received intact, i.e., not broken? Yes
10. Were custody/security seals present? No
11. If yes, were custody/security seals intact? NA
12. Was the sample received on ice? If yes, the recorded temp is 4°C, i.e., 6°±2°C Yes

Note: Thermal preservation is not required, if samples are received w/i 15 minutes of sampling

13. If no visible ice, record the temperature. Actual sample temperature: 4°C

### Sample Container

14. Are aqueous VOC samples present? No
15. Are VOC samples collected in VOA Vials? NA
16. Is the head space less than 6-8 mm (pea sized or less)? NA
17. Was a trip blank (TB) included for VOC analyses? NA
18. Are non-VOC samples collected in the correct containers? Yes
19. Is the appropriate volume/weight or number of sample containers collected? Yes

### Field Label

20. Were field sample labels filled out with the minimum information:  
Sample ID? Yes  
Date/Time Collected? Yes  
Collectors name? Yes

### Sample Preservation

21. Does the COC or field labels indicate the samples were preserved? No
22. Are sample(s) correctly preserved? NA
24. Is lab filtration required and/or requested for dissolved metals? No

### Multiphase Sample Matrix

26. Does the sample have more than one phase, i.e., multiphase? No
27. If yes, does the COC specify which phase(s) is to be analyzed? NA

### Subcontract Laboratory

28. Are samples required to get sent to a subcontract laboratory? No
29. Was a subcontract laboratory specified by the client and if so who? NA Subcontract Lab: NA

### Client Instruction

Signature of client authorizing changes to the COC or sample disposition.

Date



envirotech Inc.

District I  
1625 N. French Dr., Hobbs, NM 88240  
District II  
811 S. First St., Artesia, NM 88210  
District III  
1000 Rio Brazos Road, Aztec, NM 87410  
District IV  
1220 S. St. Francis Dr., Santa Fe, NM 87505

State of New Mexico  
Energy Minerals and Natural  
Resources Department

Oil Conservation Division  
1220 South St. Francis Dr.  
Santa Fe, NM 87505

Form C-141  
Revised August 24, 2018  
Submit to appropriate OCD District office

Incident ID	
District RP	
Facility ID	
Application ID	

## Release Notification

### Responsible Party

Responsible Party <b>Reliable Production, LLC</b>	OGRID <b>371618</b>
Contact Name <b>Shawna Martinez</b>	Contact Telephone <b>505-327-4892</b>
Contact email <b>Shawna@walsheng.net</b>	Incident # (assigned by OCD) <b>N/A</b>
Contact mailing address: <b>332 Road 3100 Aztec, NM 87410</b>	

### Location of Release Source

Latitude 36.7735176 Longitude -107.9843521  
(NAD 83 in decimal degrees to 5 decimal places)

Site Name <b>Sangre De Cristo #2</b>	Site Type <b>GAS</b>
Date Release Discovered: <b>N/A</b>	API# (if applicable) <b>30-045-20881</b>

Unit Letter	Section	Township	Range	County
D	34	30N	11W	San Juan

Surface Owner: ☐ State ☒ Federal ☐ Tribal ☐ Private (Name: \_\_\_\_\_)

### Nature and Volume of Release

Material(s) Released (Select all that apply and attach calculations or specific justification for the volumes provided below)

<input type="checkbox"/> Crude Oil	Volume Released (bbls)	Volume Recovered (bbls)
<input type="checkbox"/> Produced Water	Volume Released (bbls)	Volume Recovered (bbls)
	Is the concentration of dissolved chloride in the produced water >10,000 mg/l?	<input type="checkbox"/> Yes <input type="checkbox"/> No
<input type="checkbox"/> Condensate	Volume Released (bbls)	Volume Recovered (bbls)
<input type="checkbox"/> Natural Gas	Volume Released (Mcf)	Volume Recovered (Mcf)
<input type="checkbox"/> Other (describe)	Volume/Weight Released (provide units)	Volume/Weight Recovered (provide units)

Cause of Release: **All Analytical results came back non-detect demonstrating a release did not occur on the BGT removal.**

State of New Mexico  
Oil Conservation Division

Incident ID	
District RP	
Facility ID	
Application ID	

Was this a major release as defined by 19.15.29.7(A) NMAC?  <input type="checkbox"/> Yes <input checked="" type="checkbox"/> No	If YES, for what reason(s) does the responsible party consider this a major release?
If YES, was immediate notice given to the OCD? By whom? To whom? When and by what means (phone, email, etc)?	

Initial Response

*The responsible party must undertake the following actions immediately unless they could create a safety hazard that would result in injury*

<input type="checkbox"/> The source of the release has been stopped. <input type="checkbox"/> The impacted area has been secured to protect human health and the environment. <input type="checkbox"/> Released materials have been contained via the use of berms or dikes, absorbent pads, or other containment devices. <input type="checkbox"/> All free liquids and recoverable materials have been removed and managed appropriately.
If all the actions described above have <u>not</u> been undertaken, explain why:
Per 19.15.29.8 B. (4) NMAC the responsible party may commence remediation immediately after discovery of a release. If remediation has begun, please attach a narrative of actions to date. If remedial efforts have been successfully completed or if the release occurred within a lined containment area (see 19.15.29.11(A)(5)(a) NMAC), please attach all information needed for closure evaluation.
I hereby certify that the information given above is true and complete to the best of my knowledge and understand that pursuant to OCD rules and regulations all operators are required to report and/or file certain release notifications and perform corrective actions for releases which may endanger public health or the environment. The acceptance of a C-141 report by the OCD does not relieve the operator of liability should their operations have failed to adequately investigate and remediate contamination that pose a threat to groundwater, surface water, human health or the environment. In addition, OCD acceptance of a C-141 report does not relieve the operator of responsibility for compliance with any other federal, state, or local laws and/or regulations.  Printed Name: <u>Shawna Martinez</u> Title: <u>Regulatory Specialist</u>  Signature: _____ Date: <u>12/19/2023</u>  email: <u>Shawna@walsheng.net</u> Telephone: <u>505-327-4892</u>
<b><u>OCD Only</u></b>  Received by: _____ Date: _____

State of New Mexico  
Oil Conservation Division

Incident ID	
District RP	
Facility ID	
Application ID	

## Closure

The responsible party must attach information demonstrating they have complied with all applicable closure requirements and any conditions or directives of the OCD. This demonstration should be in the form of a comprehensive report (electronic submittals in .pdf format are preferred) including a scaled site map, sampling diagrams, relevant field notes, photographs of any excavation prior to backfilling, laboratory data including chain of custody documents of final sampling, and a narrative of the remedial activities. Refer to 19.15.29.12 NMAC.

**Closure Report Attachment Checklist:** *Each of the following items must be included in the closure report.*

- ☐ A scaled site and sampling diagram as described in 19.15.29.11 NMAC
- ☐ Photographs of the remediated site prior to backfill or photos of the liner integrity if applicable (Note: appropriate OCD District office must be notified 2 days prior to liner inspection)
- ☐ Laboratory analyses of final sampling (Note: appropriate ODC District office must be notified 2 days prior to final sampling)
- ☐ Description of remediation activities

I hereby certify that the information given above is true and complete to the best of my knowledge and understand that pursuant to OCD rules and regulations all operators are required to report and/or file certain release notifications and perform corrective actions for releases which may endanger public health or the environment. The acceptance of a C-141 report by the OCD does not relieve the operator of liability should their operations have failed to adequately investigate and remediate contamination that pose a threat to groundwater, surface water, human health or the environment. In addition, OCD acceptance of a C-141 report does not relieve the operator of responsibility for compliance with any other federal, state, or local laws and/or regulations. The responsible party acknowledges they must substantially restore, reclaim, and re-vegetate the impacted surface area to the conditions that existed prior to the release or their final land use in accordance with 19.15.29.13 NMAC including notification to the OCD when reclamation and re-vegetation are complete.

Printed Name: Shawna Martinez Title: Regulatory Specialist

Signature:  Date: 12/19/2023

email: Shawna@walsheng.net Telephone: 505-327-4892

**OCD Only**

Received by: \_\_\_\_\_ Date: \_\_\_\_\_

Closure approval by the OCD does not relieve the responsible party of liability should their operations have failed to adequately investigate and remediate contamination that poses a threat to groundwater, surface water, human health, or the environment nor does not relieve the responsible party of compliance with any other federal, state, or local laws and/or regulations.

Closure Approved by: \_\_\_\_\_ Date: \_\_\_\_\_

Printed Name: \_\_\_\_\_ Title: \_\_\_\_\_

# Reliable Production, L.L.C

## Below Grade Tank Closure Plan

Sangre De Cristo #2

U/L: D, Section 34, TWN: 30N. RNG: 11W

San Juan County, New Mexico

As stipulated in Rule 19 .15 .17 .13 NMAC, the following information adheres to the requirements established in closing below-grade tanks (BGTs) on Reliable Production, L.L.C well sites. This plan will address the standard protocols and procedures for closure of BGTs.

Reliable Production, L.L.C proposes to close its existing BGTs that do not meet the requirements of Paragraphs (1) through (4) of Subsection I of 19.15.17.11 NMAC or are not included in Paragraph (5) of Subsection I of 19.15.17.11 NMAC in accordance with this closure plan and the transitional provisions of Subsection E of 19.15.17.17 NMAC.

The following outline addresses all requirements for closure of Reliable Production, L.L.C BGTs:

1. Prior notification of Reliable Production, L.L.C intent to close the BGT will follow 19.15.17.13J (1) and (2).

a. Reliable Production, L.L.C will notify the surface owner by certified mail, return receipt requested, of closure plans. Evidence of mailing of the notice to the address of the surface owner shown in the county tax records is enough to demonstrate compliance with this requirement.

b. Notification will also be given to the division District II office verbally or by other means at least 72 hours, but not more than one (1) week, prior to any closure operation. The notice will include the operator's name and the well's name, number, and API number, in addition to the well's legal description, including the unit letter, section, township, and range.

**Notice was provided to the NMOCD District III office and the Farmington NM BLM Office. Attached is a copy of the notification.**

2. Reliable Production, L.L.C will remove liquids and sludge from the BGT prior to implementing a closure method and dispose of the liquids and sludge in a NMOCD's division-approved facility. A list of EPIC Energy, L.L.C approved disposal facilities is below:

Fluid disposal:

**Agua Moss**

Sunco well #1

U/L=E, SWNW, Section 2, T29N-R12W San Juan, New Mexico

Permit #NM-01-0009

**Basin Disposal Inc.**

Basin Disposal well # 1

U/L=F, SWNW, Section 3, T29N-R1 1 W San Juan, New Mexico

Permit #NM-01-0005

Solid disposal: **Envirotech Land Farm**

Disposal Facility

Section 6, T26N-R10W, County Road #7175 San Juan, New Mexico

Permit #NM-01-0011

**All liquids that were in the BGT were removed and sent to one of their referenced Division approved faculties.**

3. Reliable Production, L.L.C will remove the BGT from the pit and place it at ground level adjacent to the original BGT site and dispose of it in a NMOCD approved facility or recycle, reuse, or reclaim it in a manner that the NMOCD approved. If a liner is present and must be disposed of it will be cleaned and disposed at a permitted solid waste facility, pursuant to Subparagraph (m) of Paragraph (1) of Subsection C of 19.15.35.8 NMAC.

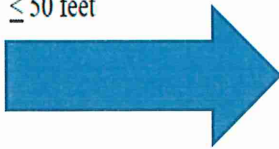
**The BGT was transported for recycling.**

4. Reliable Production, L.L.C will hook up necessary equipment and piping for temporary tank use. At this time, any on-site equipment not necessary to the operation of the tank will be removed from the site.

**All equipment associated with the BGT removal has been removed.**

5. Reliable Production, L.L.C will test the soils beneath the original BGT location to determine whether a release has occurred. At a minimum, a five (5) point composite sample will be collected in addition to individual grab samples from areas that are wet, discolored, or showing other evidence of a release. The samples will be analyzed for BTEX, TPH, and chlorides to demonstrate that they do not exceed certain concentrations. The testing methods and closure standards for those constituents are as follows:

**All analytical results that were collected during the removal of the Below Grade Tank came back Non-Detect. An OCD nor BLM representative was not onsite to witness the removal of the BGT and sampling.**

Table I Closure Criteria for Soils Impacted by a Release			
Minimum depth below any point within the horizontal boundary of the release to ground water less than 10,000 mg/l TDS	Constituent	Method*	Limit**
≤ 50 feet 	Chloride***	EPA 300.0 or SM4500 Cl B	600 mg/kg
	TPH (GRO+DRO+MRO)	EPA SW-846 Method 8015M	100 mg/kg
	BTEX	EPA SW-846 Method 8021B or 8260B	50 mg/kg
	Benzene	EPA SW-846 Method 8021B or 8260B	10 mg/kg
51 feet-100 feet	Chloride***	EPA 300.0 or SM4500 Cl B	10,000 mg/kg
	TPH (GRO+DRO+MRO)	EPA SW-846 Method 8015M	2,500 mg/kg
	GRO+DRO	EPA SW-846 Method 8015M	1,000 mg/kg
	BTEX	EPA SW-846 Method 8021B or 8260B	50 mg/kg
	Benzene	EPA SW-846 Method 8021B or 8260B	10 mg/kg
>100 feet	Chloride***	EPA 300.0 or SM4500 Cl B	20,000 mg/kg
	TPH (GRO+DRO+MRO)	EPA SW-846 Method 8015M	2,500 mg/kg
	GRO+DRO	EPA SW-846 Method 8015M	1,000 mg/kg
	BTEX	EPA SW-846 Method 8021B or 8260B	50 mg/kg
	Benzene	EPA SW-846 Method 8021B or 8260B	10 mg/kg

Notes: mg/Kg= milligram per kilogram; BTEX = benzene, toluene, ethylbenzene, and total xylenes; TPH = total petroleum hydrocarbons. Other EPA methods that the division approves may be applied to all constituents listed. The Chlorides closure standards will be determined by whichever concentration level is greatest.

6. Reliable Production, L.L.C will notify the division District III office of the soil test results on Form C-14 I. It is understood that the NMOCD may require additional delineation upon review of the results.

**A C-141 is attached for Closure demonstrating a release did not occur on the Sangre De Cristo #2.**

7. If it is determined that a release has occurred, then EPIC Energy, L.L.C will comply with 19.15.3.116 NMAC and 19.15.1.19 NMAC, as appropriate.

**A C-141 is attached for Closure demonstrating a release did not occur on the Sangre De Cristo #2.**

8. If the confirmation sampling demonstrates that a release has not occurred or that any release does not exceed the concentrations specified above, then EPIC Energy, L.L.C will backfill the excavation with compacted, non-waste containing, earthen material; construct a division prescribed soil cover; re-contour the site; and move the fiberglass tank onto the newly backfilled and compacted site. The division-prescribed soil cover, re-contouring, and re-vegetation requirements shall comply with Subsections G, H, and I of 19.15.17.13 NMAC.

**The area has been backfilled and will be reclaimed once the well has been plugged and abandoned.**

9. Reclamation will follow 19.15.17.130 (1) and (2).

a. The BGT location and all areas associated with the BGT, including associated access roads, if applicable, will be reclaimed to a safe and stable condition that blends with the surrounding undisturbed area. It is understood that Reliable Production, L.L.C shall substantially restore the impacted surface area to the condition that existed prior to oil and gas operations by placement of the soil cover as provided in Subsection H of 19.15.17.13 NMAC and re-contour the location and associated areas to a contour that approximates the original contour and blends with the surrounding topography.

b. Re-vegetation will not be completed at the time the BGT pit is reclaimed but will instead be applied for as part of the P&A process when the well is plugged and abandoned.

10. Soil cover will follow 19.15.17.13H (1) and (3).

a. The soil cover for closures where the BGT has been removed or contaminated soil has been remediated to the NMOCD's satisfaction will consist of the background thickness

of topsoil or one (1) foot of suitable material to establish vegetation at the site, whichever is greater.

b. The soil cover will be constructed to the site's existing grade, and all possible efforts will be conducted to prevent ponding of water and erosion of the cover material.

**The area has been backfilled and will be reclaimed once the well has been plugged and abandoned.**

11. Within 60 days of closure completion, Reliable Production, L.L.C will submit a closure report on NMOCD's Form C-144, with necessary attachments to document all closure activities, including sampling results; information required by 19.15.17 NMAC; and details on backfilling, capping, and covering, where applicable. EPIC Energy, L.L.C will certify that all information in the report and attachments is correct and that EPIC Energy, L.L.C has complied with all applicable closure requirements and conditions specified in the approved closure plan.

# **RELIABLE PRODUCTION, LLC**

**SANGRE DE CRISTO #2**

**960' FNL 800' FWL**

**SEC D34 T30N R11W**

**LAT: 36.7735176**

**LONG: -107.9843521**

**LEASE #NMNMO27002**

**API #30-045-20881**

**SAN JUAN COUNTY, NEW MEXICO**

**EMERGENCY: 505-801-8508**







**District I**  
1625 N. French Dr., Hobbs, NM 88240  
Phone:(575) 393-6161 Fax:(575) 393-0720  
**District II**  
811 S. First St., Artesia, NM 88210  
Phone:(575) 748-1283 Fax:(575) 748-9720  
**District III**  
1000 Rio Brazos Rd., Aztec, NM 87410  
Phone:(505) 334-6178 Fax:(505) 334-6170  
**District IV**  
1220 S. St Francis Dr., Santa Fe, NM 87505  
Phone:(505) 476-3470 Fax:(505) 476-3462

State of New Mexico  
Energy, Minerals and Natural Resources  
Oil Conservation Division  
1220 S. St Francis Dr.  
Santa Fe, NM 87505

CONDITIONS  
  
Action 296430

CONDITIONS

Operator: RELIABLE PRODUCTION LLC 407 Ouray Ave Farmington, NM 87401	OGRID: 371618
	Action Number: 296430
	Action Type: [C-144] Below Grade Tank Plan (C-144B)

CONDITIONS

Created By	Condition	Condition Date
vvenegas	None	12/26/2023