



333 Main Street Shelby, Montana 59474 / P.O. Box 10640 Bozeman, MT 59179

(406) 460-0903

TO: Jim Griswold, OCD

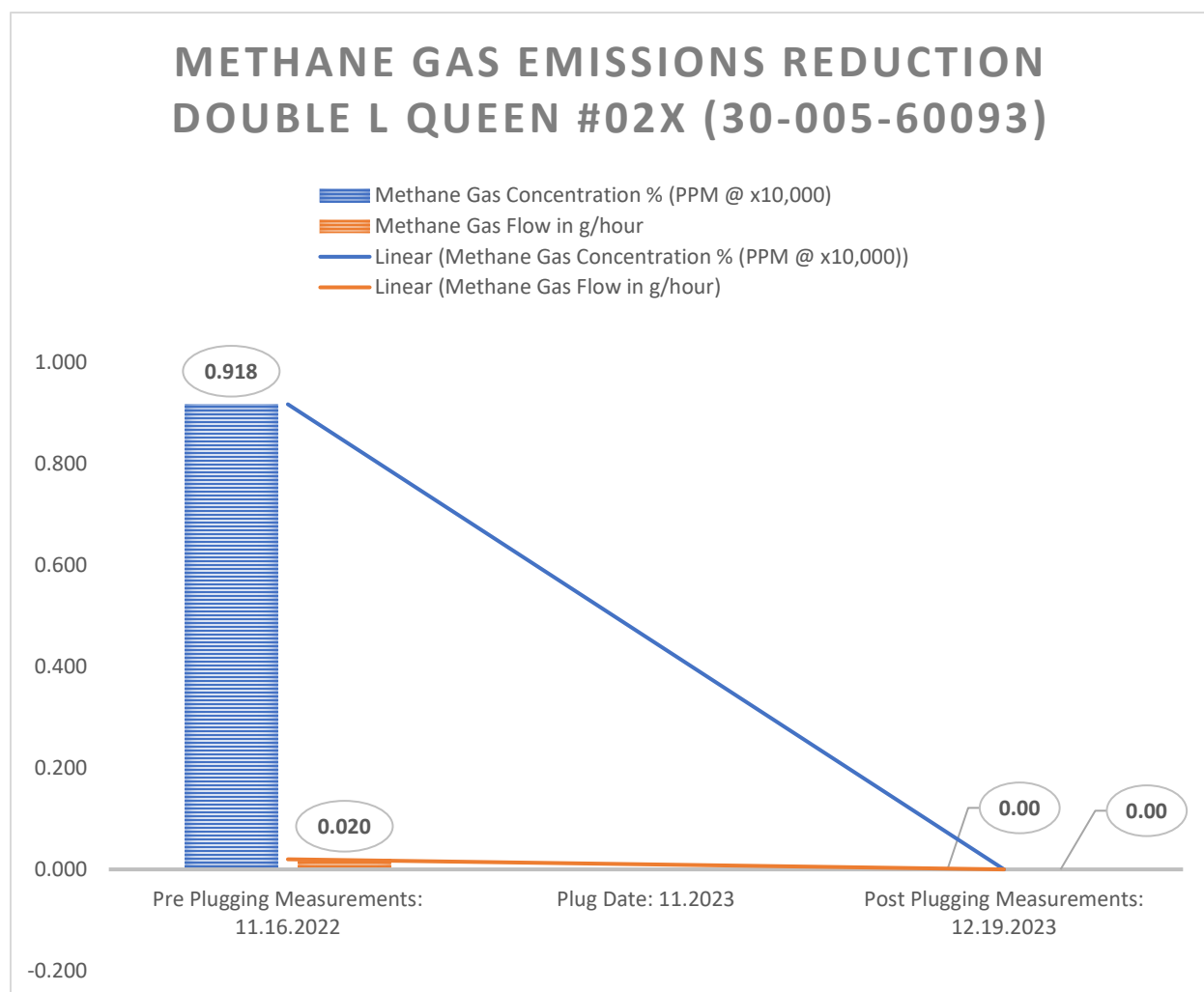
FROM: Curtis Shuck, WDNM

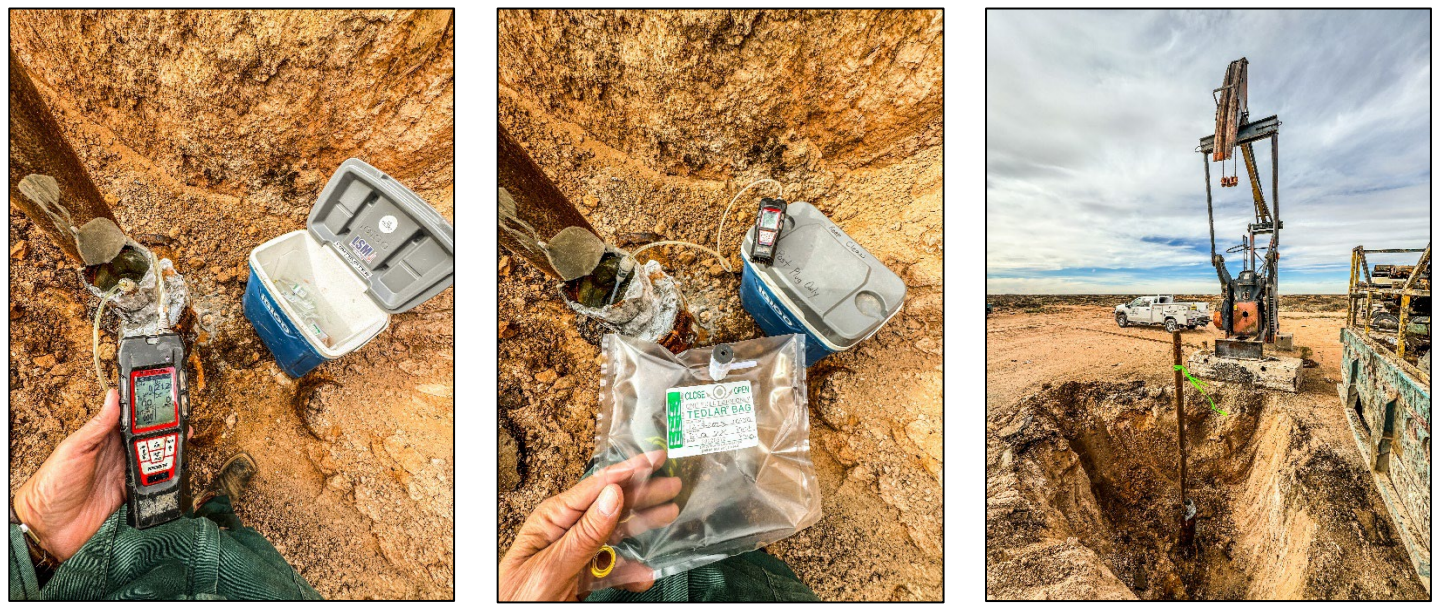
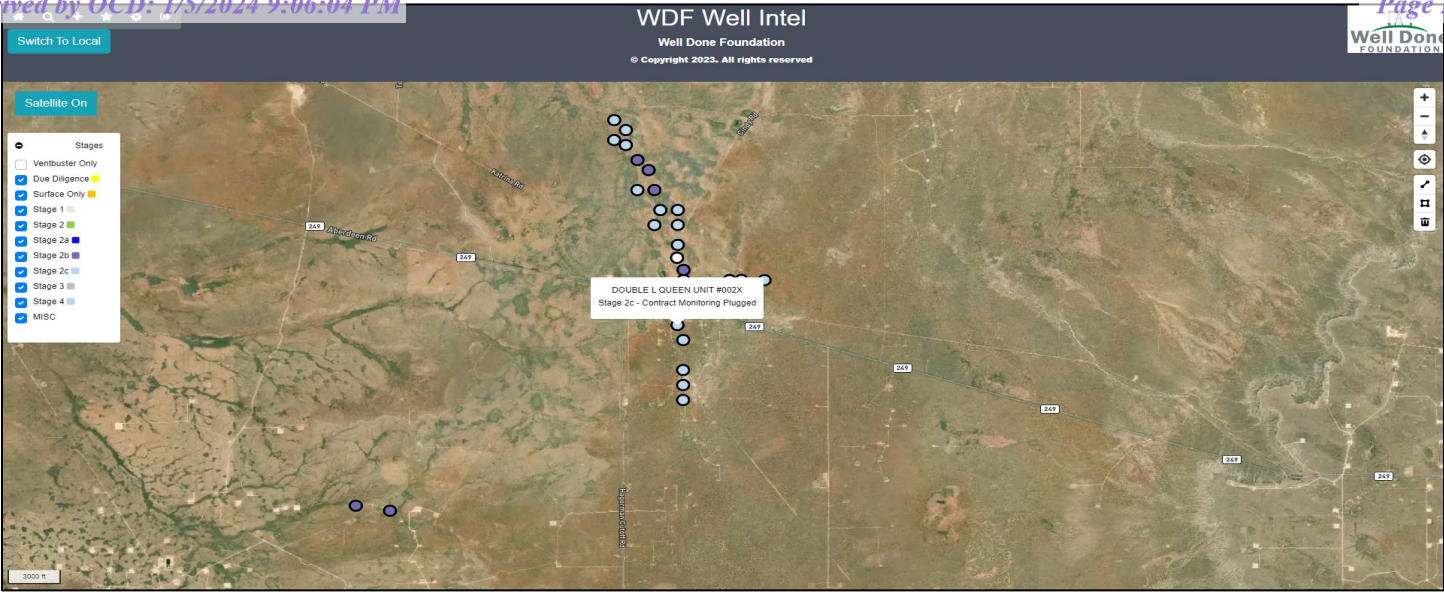
DATE: December 31, 2023

RE: Double L Queen #02X (30-005-60093) Post Plugging Methane Emission Reduction Report

### MEMORANDUM

Well Done New Mexico LLC performed Post Plugging Orphan Well Methane Emission Testing, Gas Sampling & Analysis on the Double L Queen #02X (30-005-60093) on December 19, 2023. The following are the conclusions:



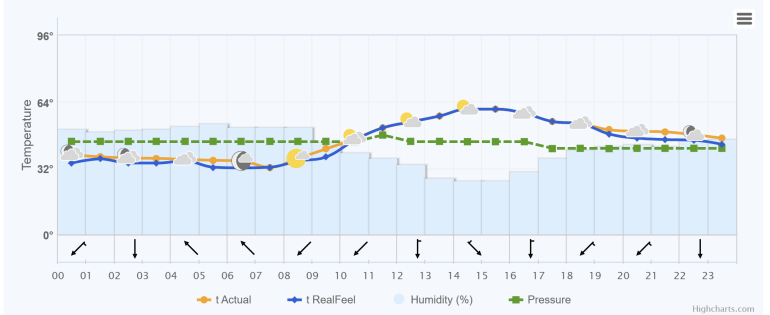


<b>C6+ Gas Analysis Report</b>			
19609G	DLQ 2X POST PLUG	DLQ 2X POST PLUG	
Sample Point Code	Sample Point Name	Sample Point Location	
Laboratory Services: 2023091618 BAG CES - Spot			
Source Laboratory	Lab File No	Customer Identity	Sampler
USA	USA	USA	New Mexico
District	Area Name	Field Name	Facility Name
Dec 19, 2023 10:30	Dec 1, 2023	Dec 20, 2023 09:11	Dec 20, 2023
Date Sampled	Date Effective	Date Received	Date Reported
Ambient Temp (°F) Flow Rate (Nf) Analyst Press PSI @ Temp (°F) Source Conditions			
Well Done Foundation			
Operator Lab Source Description			
Component	Normalized Mol %	Un-Normalized Mol %	GPM
H2S (H2S)	0.0000	0	
Nitrogen (N2)	94.8640	94.86373	
CO2 (CO2)	0.1460	0.14561	
Methane (C1)	0.0000	0	
Ethane (C2)	0.3590	0.35982	0.0960
Propane (C3)	0.3880	0.38803	0.1070
i-Butane (iC4)	0.0950	0.09481	0.0210
n-Butane (nC4)	0.3650	0.36537	0.1150
i-Pentane (iC5)	0.2880	0.2885	0.1050
n-Pentane (nC5)	0.5270	0.52677	0.1910
Hexanes Plus (C6+)	2.9680	2.96837	1.2880
TOTAL	100.0000	100.0000	1.9330
Gross Heating Values (Real, BTU/lb)			
14.096 PSI @ 60.00 61°F 14.773 PSI @ 60.00 61°F			
Dry	Saturated	Dry	Saturated
216.8	213.9	217.3	214.4
Calculated Total Sample Properties			
GPM245-18 °C Calculated at Contract Conditions			
Relative Density (Real)			
1.0548			
Molecular Weight			
30.5791			
C6+ Group Properties			
Assumed Composition			
C6 = 60.0000% C7 = 30.0000% CB = 10.0000%			
Real H2S			
0 PPM			
PROTEND STATUS:			
Passed By Validator on Dec 20, 2023			
DATA SOURCE:			
First sample taken @ this point, composition looks reasonable			
VALIDATOR:			
Dustin Armstrong			
VALIDATOR COMMENTS:			
OK			
Analyzer Information			
Device Type:	Gas Chromatograph	Device Make:	Shimadzu
Device Model:	GC-2014	Last Cal Date:	Dec 18, 2023
Source	Date	Notes	
Dustin Armstrong	Dec 20, 2023 4:22 pm	Methane = 0 ppm	

December 19, 2023

	Atmospheric conditions and temperature °F	RealFeel °F	Atmospheric pressure inHg	Wind speed mph	Humidity
Night	+37°	+37°	26.4	SW 2.7	78%
Morning	+32°	+32°	26.4	NW 1.8	81%
Day	+57°	+57°	26.4	S 5.4	43%
Evening	+50°	+48°	26.3	SW 5.4	67%

Hourly forecast for 19.12.2023





19609G	DLQ 2X POST PLUG	DLQ 2X POST PLUG	
Sample Point Code	Sample Point Name	Sample Point Location	
Laboratory Services	2023081618	BAG	CES - Spot
Source Laboratory	Lab File No	Container Identity	Sampler
USA	USA	USA	New Mexico
District	Area Name	Field Name	Facility Name
Dec 19, 2023 10:30	Dec 1, 2023	Dec 20, 2023 09:11	Dec 20, 2023
Date Sampled	Date Effective	Date Received	Date Reported
Admin			
Ambient Temp (°F)	Flow Rate (Mcf)	Analyst	Press PSI @ Temp °F Source Conditions
Well Done Foundation	NG		
Operator	Lab Source Description		

Component	Normalized Mol %	Un-Normalized Mol %	GPM
H2S (H2S)	0.0000	0	
Nitrogen (N2)	94.8640	94.86373	
CO2 (CO2)	0.1460	0.14561	
Methane (C1)	0.0000	0	
Ethane (C2)	0.3590	0.35882	0.0960
Propane (C3)	0.3880	0.38803	0.1070
I-Butane (IC4)	0.0950	0.09481	0.0310
N-Butane (NC4)	0.3650	0.36537	0.1150
I-Pentane (IC5)	0.2880	0.2885	0.1050
N-Pentane (NC5)	0.5270	0.52677	0.1910
Hexanes Plus (C6+)	2.9680	2.96837	1.2880
TOTAL	100.0000	100.0000	1.9330

Method(s): Gas C6+ - GPA 2261, Extended Gas - GPA 2286, Calculations - GPA 2172

Analyzer Information			
Device Type:	Gas Chromatograph	Device Make:	Shimadzu
Device Model:	GC-2014	Last Cal Date:	Dec 18, 2023

Gross Heating Values (Real, BTU/ft³)			
14.696 PSI @ 60.00 Å°F	14.73 PSI @ 60.00 Å°F		
Dry	Saturated	Dry	Saturated
216.8	213.9	217.3	214.4
Calculated Total Sample Properties			
GPA2145-16 *Calculated at Contract Conditions			
Relative Density Real	Relative Density Ideal		
1.0548	1.0543		
Molecular Weight			
30.5391			
C6+ Group Properties			
Assumed Composition			
C6 - 60.000%	C7 - 30.000%	C8 - 10.000%	
Field H2S			
0 PPM			

## PROTREND STATUS:

Passed By Validator on Dec 20, 2023

## DATA SOURCE:

Imported

## PASSED BY VALIDATOR REASON:

First sample taken @ this point, composition looks reasonable

## VALIDATOR:

Dustin Armstrong

## VALIDATOR COMMENTS:

OK

Source	Date	Notes
Dustin Armstrong	Dec 20, 2023 4:22 pm	Methane = 0 ppm



**District I**  
1625 N. French Dr., Hobbs, NM 88240  
Phone:(575) 393-6161 Fax:(575) 393-0720  
**District II**  
811 S. First St., Artesia, NM 88210  
Phone:(575) 748-1283 Fax:(575) 748-9720  
**District III**  
1000 Rio Brazos Rd., Aztec, NM 87410  
Phone:(505) 334-6178 Fax:(505) 334-6170  
**District IV**  
1220 S. St Francis Dr., Santa Fe, NM 87505  
Phone:(505) 476-3470 Fax:(505) 476-3462

**State of New Mexico**  
**Energy, Minerals and Natural Resources**  
**Oil Conservation Division**  
**1220 S. St Francis Dr.**  
**Santa Fe, NM 87505**

DEFINITIONS

Action 300516

DEFINITIONS

Operator: CANYON E & P COMPANY 251 O'Connor Ridge Blvd. Irving, TX 75038	OGRID: 269864
	Action Number: 300516
	Action Type: [UF-OMA] Post-Plug Methane Monitoring (UF-OMA-MMB)

DEFINITIONS

The Orphan Well Mitigation Activity (OMA) forms are a subset of the OCD's forms exclusively designed for activities related to State of New Mexico's contracted plugging and reclamation activities. Specifically, these forms are used for orphan wells or associated facilities which are in a "Reclamation Fund Approved" status. This status represents wells or facilities where the OCD has acquired a hearing order allowing the OCD to perform plugging or reclamation on wells and associated facilities that no longer have a viable operator to perform the necessary work. These forms are not to be utilized for any other purpose.

**District I**

1625 N. French Dr., Hobbs, NM 88240  
Phone:(575) 393-6161 Fax:(575) 393-0720

**District II**

811 S. First St., Artesia, NM 88210  
Phone:(575) 748-1283 Fax:(575) 748-9720

**District III**

1000 Rio Brazos Rd., Aztec, NM 87410  
Phone:(505) 334-6178 Fax:(505) 334-6170

**District IV**

1220 S. St Francis Dr., Santa Fe, NM 87505  
Phone:(505) 476-3470 Fax:(505) 476-3462

**State of New Mexico**  
**Energy, Minerals and Natural Resources**  
**Oil Conservation Division**  
**1220 S. St Francis Dr.**  
**Santa Fe, NM 87505**

QUESTIONS

Action 300516

**QUESTIONS**

Operator: CANYON E & P COMPANY 251 O'Connor Ridge Blvd. Irving, TX 75038	OGRID: 269864
	Action Number: 300516
	Action Type: [UF-OMA] Post-Plug Methane Monitoring (UF-OMA-MMB)

**QUESTIONS**

<b>Prerequisites</b>	
[OGRID] Well Operator	[269864] CANYON E & P COMPANY
[API] Well Name and Number	[30-005-60093] DOUBLE L QUEEN UNIT #002X
Well Status	Reclamation Fund Approved

**Monitoring Event Information***Please answer all the questions in this group.*

Reason For Filing	Post-Plug Methane Monitoring
Date of monitoring	12/19/2023
Latitude	33.04328
Longitude	-103.97526

**Monitoring Event Details***Please answer all the questions in this group.*

Flow rate in cubic meters per day (m³/day)	0.00
Test duration in hours (hr)	2.0
Average flow temperature in degrees Celsius (°C)	0.0
Average gauge flow pressure in kilopascals (kPag)	0.0
Methane concentration in part per million (ppm)	0
Methane emission rate in grams per hour (g/hr)	0.00
Testing Method	Steady State

**Monitoring Contractor***Please answer all the questions in this group.*

Name of monitoring contractor	Well Done New Mexico LLC
-------------------------------	--------------------------