



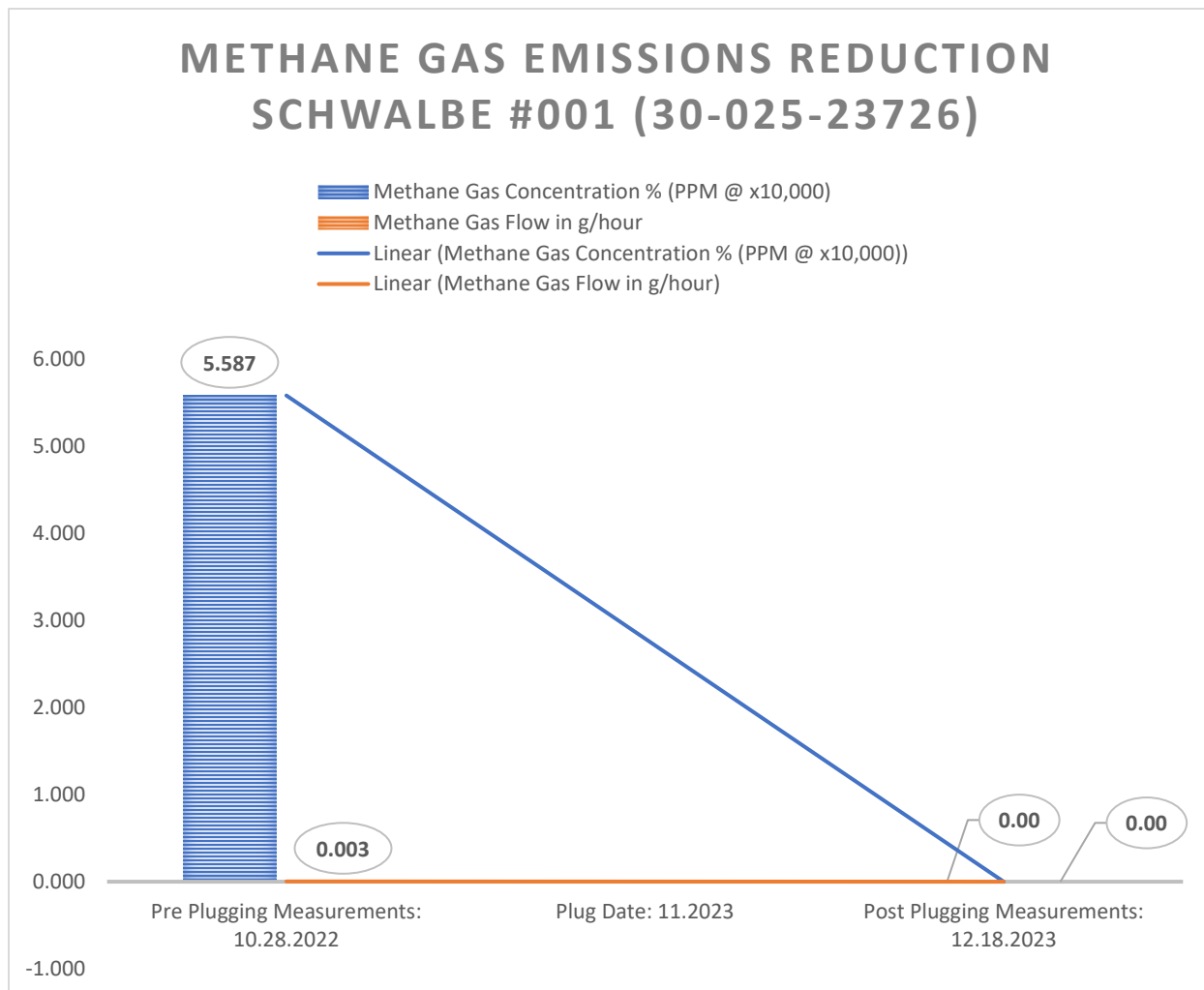
333 Main Street Shelby, Montana 59474 / P.O. Box 10640 Bozeman, MT 59179

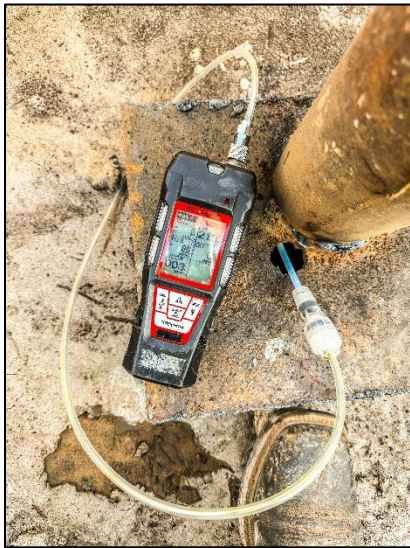
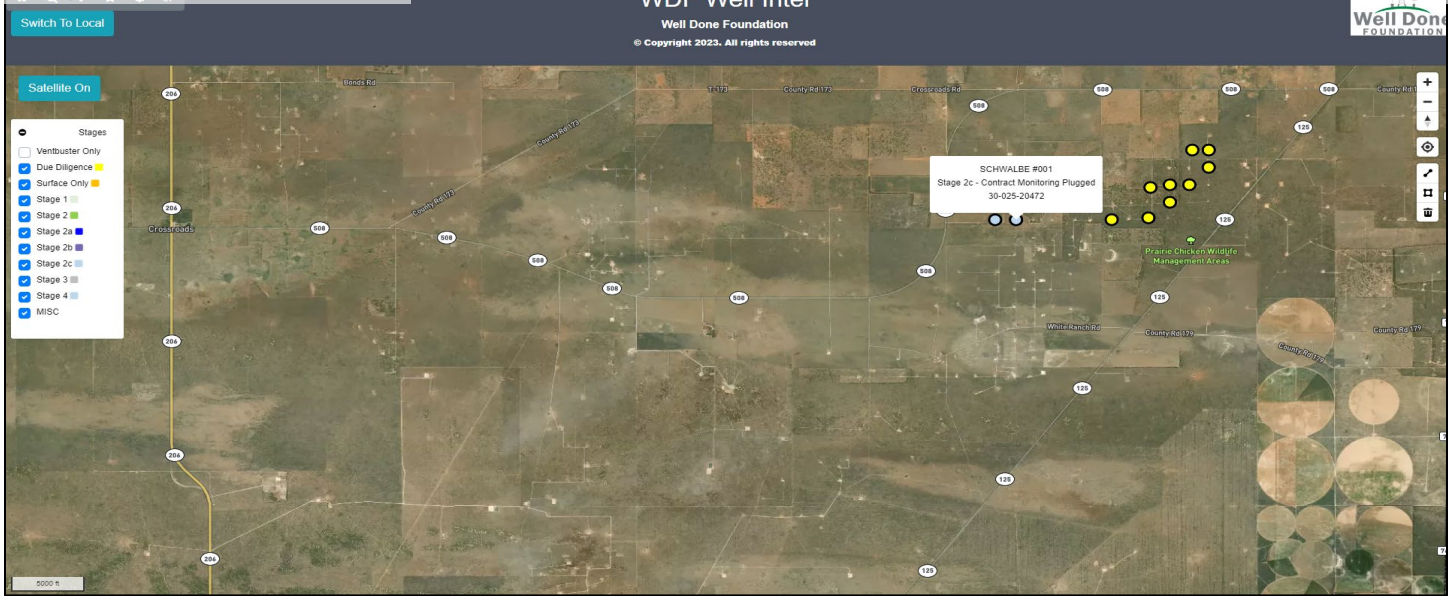
(406) 460-0903

TO: Jim Griswold, OCD
FROM: Curtis Shuck, WDNM
DATE: December 31, 2023
RE: Schwalbe #001 (30-025-23726) Post Plugging Methane Emission Reduction Report

MEMORANDUM

Well Done New Mexico LLC performed Post Plugging Orphan Well Methane Emission Testing, Gas Sampling & Analysis on the Schwalbe #001 (30-025-23726) on December 18, 2023. The following are the conclusions:





December 18, 2023

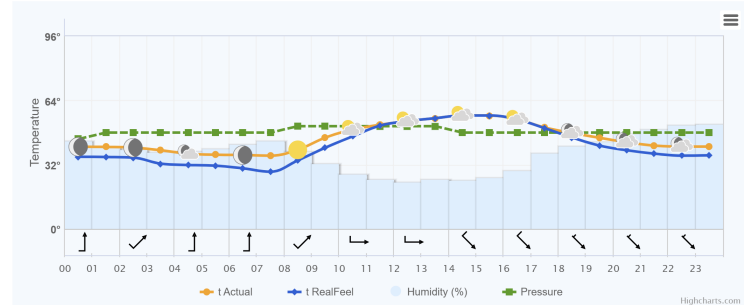
LABORATORY SERVICES www.permits.com 575.397.3713 2023 W. Main St. Hobbs, NM 88240

C6+ Gas Analysis Report

19616G	SCHWALBE 001 POST PLUG	SCHWALBE 001 POST PLUG
Sample Point Code	Sample Point Name	Sample Point Location
Laboratory Services	2023081625	BAG
Source Laboratory	Lab File No	Container Identity
USA	USA	USA
District	Area Name	Field Name
Dec 18, 2023 14:50	Dec 1, 2023	Dec 20, 2023 09:27
Date Sampled	Date Effective	Date Received
	System Administrator	Date Reported
Ambient Temp (°F)	Flow Rate (Mcf)	Analyst
		Press PSI @ Temp °F
		Source Conditions
Well Done Foundation		NG
Operator		Lab Source Description
Component	Normalized Mol %	Un-Normalized Mol %
H2S (H2S)	0.0000	0
Nitrogen (N2)	99.7360	99.736
CO2 (CO2)	0.0400	0.04
Methane (C1)	0.0000	0
Ethane (C2)	0.0000	0
Propane (C3)	0.0000	0
I-Butane (IC4)	0.0000	0
N-Butane (NC4)	0.0000	0
I-Pentane (IC5)	0.0000	0
N-Pentane (NC5)	0.0000	0
Hexanes Plus (C6+)	0.2240	0.224
TOTAL	100.0000	100.0000
GPM		0.0970
Gross Heating Values (Real, BTU/lb)		
14.086 PSI @ 60.000 °F 14.773 PSI @ 60.000 °F		
Dry 11.5 Saturated 12.2 Dry 11.5 Saturated 12.2		
Calculated Total Sample Properties		
GPA2145-16 *Calculated at Contract Conditions		
Relative Density (Real) 0.9723 Relative Density (Ideal) 0.9724		
Molecular Weight 28.1658		
C6+ Group Properties		
Assumed Composition		
C7 - 30.000% C8 - 10.000%		
Field H2S 0 PPM		
POTREND STATUS: Passed By Validator on Dec 20, 2023		
DATA SOURCE: Imported		
PASSED BY VALIDATOR REASON: First sample taken @ this point, composition looks reasonable		
VALIDATOR: Dustin Armstrong		
VALIDATOR COMMENTS: OK		
Analyzer Information		
Device Type: Gas Chromatograph Device Make: Shimadzu		
Device Model: GC-2014 Last Cal Date: Dec 18, 2023		
Source	Date	Notes
Dustin Armstrong	Dec 20, 2023 4:38 pm	Methane = 0 ppm

	Atmospheric conditions and temperature °F	RealFeel °F	Atmospheric pressure inHg	Wind speed mph	Humidity
Night	+41°	+36°	26.5	▼ N 9.6	64%
Morning	+36°	+28°	26.5	▼ N 8.7	69%
Day	+55°	+55°	26.6	► SE 8.9	39%
Evening	+45°	+41°	26.5	► SE 7.2	68%

Hourly forecast for 18.12.2023





19616G

SCHWALBE 001 POST PLUG

SCHWALBE 001 POST PLUG

Sample Point Code

Sample Point Name

Sample Point Location

Laboratory Services

2023081625

BAG

CES - Spot

Source Laboratory

Lab File No

Container Identity

Sampler

USA

USA

USA

New Mexico

District

Area Name

Field Name

Facility Name

Dec 18, 2023 14:50

Dec 1, 2023

Dec 20, 2023 09:27

Dec 20, 2023

Date Sampled

Date Effective

Date Received

Date Reported

System Administrator

Ambient Temp (°F)

Flow Rate (Mcf)

Analyst

Press PSI @ Temp °F
Source Conditions

Well Done Foundation

NG

Operator

Lab Source Description

Component	Normalized Mol %	Un-Normalized Mol %	GPM
H2S (H2S)	0.0000	0	
Nitrogen (N2)	99.7360	99.736	
CO2 (CO2)	0.0400	0.04	
Methane (C1)	0.0000	0	
Ethane (C2)	0.0000	0	0.0000
Propane (C3)	0.0000	0	0.0000
I-Butane (IC4)	0.0000	0	0.0000
N-Butane (NC4)	0.0000	0	0.0000
I-Pentane (IC5)	0.0000	0	0.0000
N-Pentane (NC5)	0.0000	0	0.0000
Hexanes Plus (C6+)	0.2240	0.224	0.0970
TOTAL	100.0000	100.0000	0.0970

Method(s): Gas C6+ - GPA 2261, Extended Gas - GPA 2286, Calculations - GPA 2172

Analyzer Information

Device Type: Gas Chromatograph Device Make: Shimadzu
 Device Model: GC-2014 Last Cal Date: Dec 18, 2023

Gross Heating Values (Real, BTU/ft³)

14.696 PSI @ 60.00 Å°F	14.73 PSI @ 60.00 Å°F
Dry	Saturated
11.5	12.2
Dry	Saturated
11.5	12.2

Calculated Total Sample Properties

GPA2145-16 *Calculated at Contract Conditions

Relative Density Real

Relative Density Ideal

0.9723

0.9724

Molecular Weight

28.1658

C6+ Group Properties

Assumed Composition

C6 - 60.000% C7 - 30.000% C8 - 10.000%

Field H2S

0 PPM

PROTREND STATUS:

Passed By Validator on Dec 20, 2023

DATA SOURCE:

Imported

PASSED BY VALIDATOR REASON:

First sample taken @ this point, composition looks reasonable

VALIDATOR:

Dustin Armstrong

VALIDATOR COMMENTS:

OK

Source	Date	Notes
Dustin Armstrong	Dec 20, 2023 4:38 pm	Methane = 0 ppm

District I
1625 N. French Dr., Hobbs, NM 88240
Phone:(575) 393-6161 Fax:(575) 393-0720
District II
811 S. First St., Artesia, NM 88210
Phone:(575) 748-1283 Fax:(575) 748-9720
District III
1000 Rio Brazos Rd., Aztec, NM 87410
Phone:(505) 334-6178 Fax:(505) 334-6170
District IV
1220 S. St Francis Dr., Santa Fe, NM 87505
Phone:(505) 476-3470 Fax:(505) 476-3462

State of New Mexico
Energy, Minerals and Natural Resources
Oil Conservation Division
1220 S. St Francis Dr.
Santa Fe, NM 87505

DEFINITIONS

Action 300585

DEFINITIONS

Operator: ROBINSON OIL INC P.O. Box 1829 Eunice, NM 88231	OGRID: 37636
	Action Number: 300585
	Action Type: [UF-OMA] Post-Plug Methane Monitoring (UF-OMA-MMB)

DEFINITIONS

The Orphan Well Mitigation Activity (OMA) forms are a subset of the OCD's forms exclusively designed for activities related to State of New Mexico's contracted plugging and reclamation activities. Specifically, these forms are used for orphan wells or associated facilities which are in a "Reclamation Fund Approved" status. This status represents wells or facilities where the OCD has acquired a hearing order allowing the OCD to perform plugging or reclamation on wells and associated facilities that no longer have a viable operator to perform the necessary work. These forms are not to be utilized for any other purpose.

District I
1625 N. French Dr., Hobbs, NM 88240
Phone:(575) 393-6161 Fax:(575) 393-0720
District II
811 S. First St., Artesia, NM 88210
Phone:(575) 748-1283 Fax:(575) 748-9720
District III
1000 Rio Brazos Rd., Aztec, NM 87410
Phone:(505) 334-6178 Fax:(505) 334-6170
District IV
1220 S. St Francis Dr., Santa Fe, NM 87505
Phone:(505) 476-3470 Fax:(505) 476-3462

State of New Mexico
Energy, Minerals and Natural Resources
Oil Conservation Division
1220 S. St Francis Dr.
Santa Fe, NM 87505

QUESTIONS

Action 300585

QUESTIONS

Operator: ROBINSON OIL INC P.O. Box 1829 Eunice, NM 88231	OGRID: 37636
	Action Number: 300585
	Action Type: [UF-OMA] Post-Plug Methane Monitoring (UF-OMA-MMB)

QUESTIONS

Prerequisites	
[OGRID] Well Operator	[37636] ROBINSON OIL INC
[API] Well Name and Number	[30-025-23726] SCHWALBE #001
Well Status	Reclamation Fund Approved

Monitoring Event Information	
<i>Please answer all the questions in this group.</i>	
Reason For Filing	Post-Plug Methane Monitoring
Date of monitoring	12/18/2023
Latitude	33.51427
Longitude	-103.15117

Monitoring Event Details	
<i>Please answer all the questions in this group.</i>	
Flow rate in cubic meters per day (m³/day)	0.00
Test duration in hours (hr)	1.0
Average flow temperature in degrees Celsius (°C)	12.5
Average gauge flow pressure in kilopascals (kPag)	0.0
Methane concentration in part per million (ppm)	0
Methane emission rate in grams per hour (g/hr)	0.00
Testing Method	Steady State

Monitoring Contractor	
<i>Please answer all the questions in this group.</i>	
Name of monitoring contractor	Well Done New Mexico LLC