



333 Main Street Shelby, Montana 59474 / P.O. Box 10640 Bozeman, MT 59179

(406) 460-0903

TO: Jim Griswold, OCD

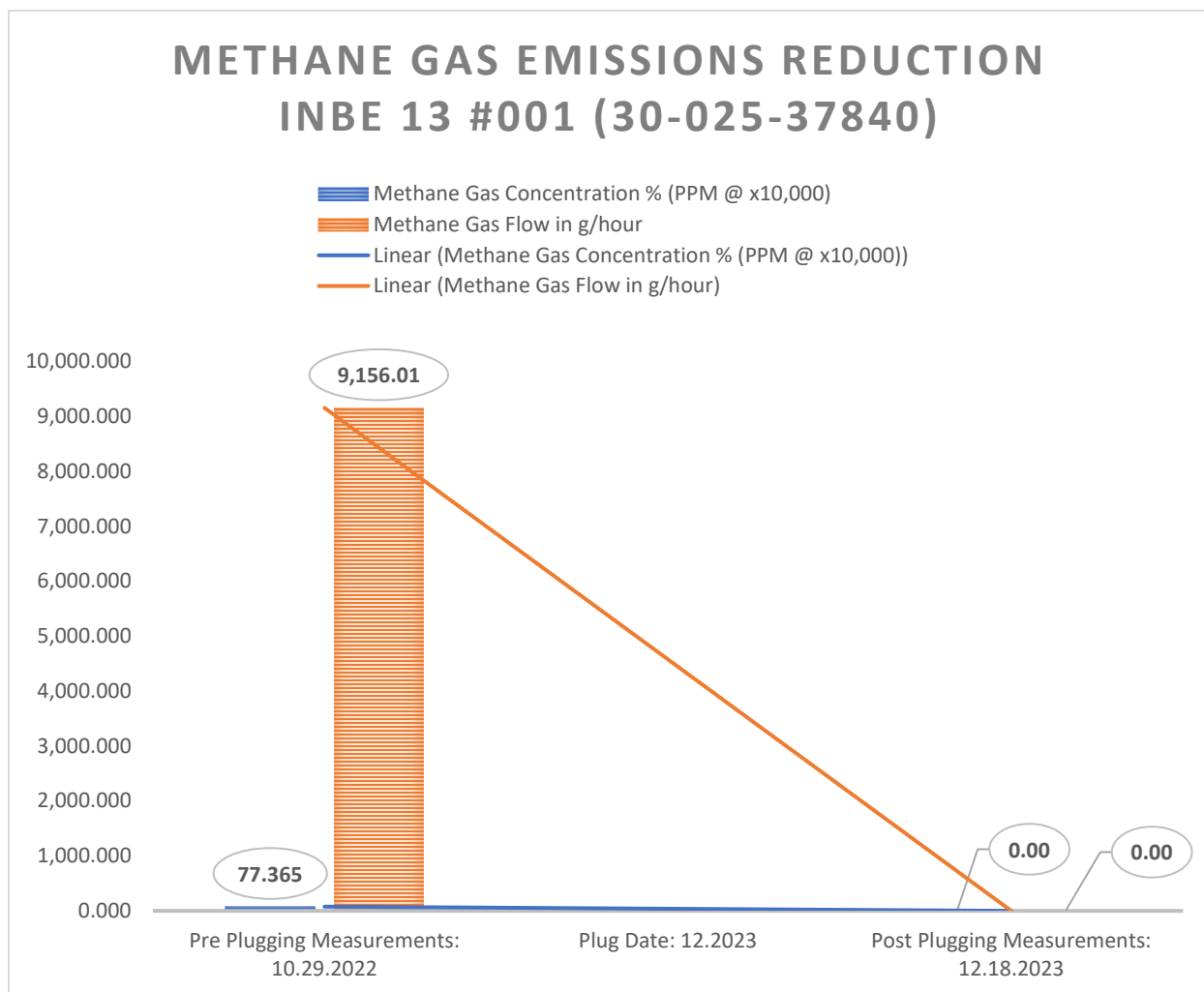
FROM: Curtis Shuck, WDNM

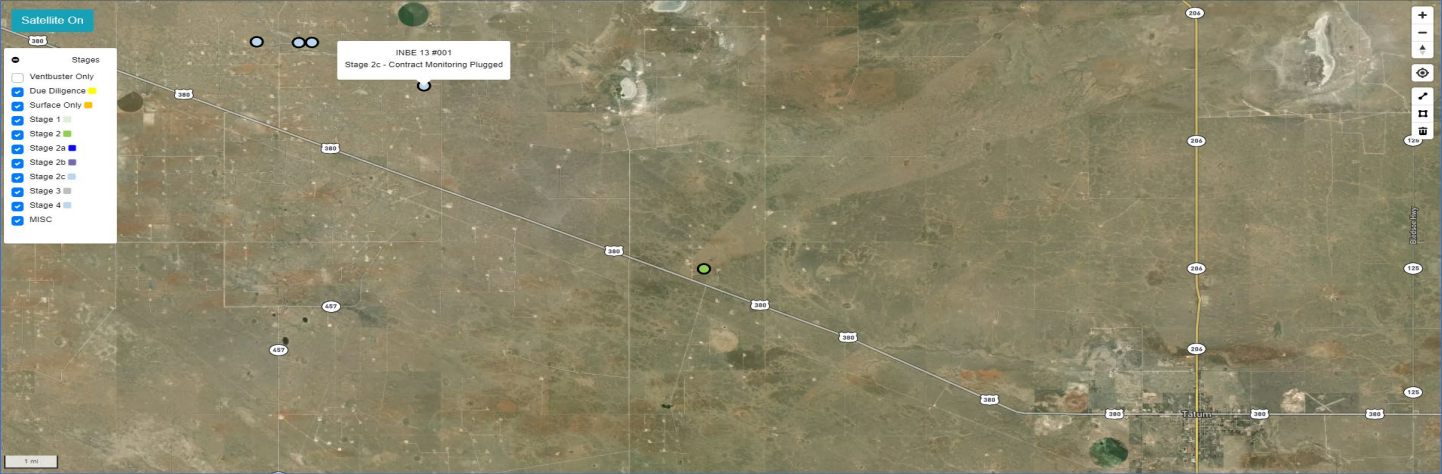
DATE: December 31, 2023

RE: Inbe 13 #001 (30-025-37840) Post Plugging Methane Emission Reduction Report

MEMORANDUM

Well Done New Mexico LLC performed Post Plugging Orphan Well Methane Emission Testing, Gas Sampling & Analysis on the Inbe 13 #001 (30-025-37840) on December 18, 2023. The following are the conclusions:





www.perrinlabs.com
575.397.3713 2020 W. Main St. Hobbs NM 88240

C6+ Gas Analysis Report

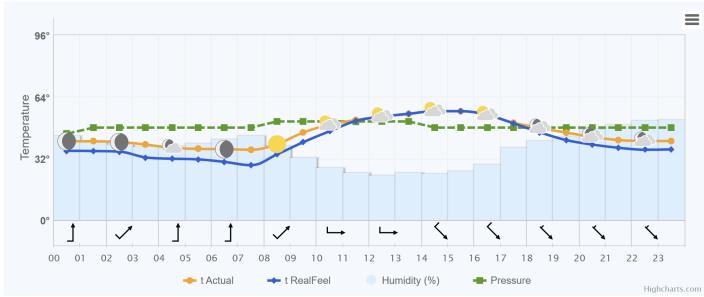
December 18, 2023

19619G	INBE 13 001 POST PLUG	INBE 13 001 POST PLUG
Sample Point Code	Sample Point Name	Sample Point Location
Laboratory Services	2023081628	BAG
Source Laboratory	Lab File No	Container Identity
USA	USA	USA
District	Area Name	Field Name
Dec 18, 2023 12:15	Dec 1, 2023	Dec 20, 2023 09:44
Date Sampled	Date Effective	Date Received
Dec 20, 2023		
Date Reported		
System Administrator		
Ambient Temp (°F)	Flow Rate (Mcf)	Analyst
		Press PSI @ Temp °F
		Source Conditions

Atmospheric conditions and temperature °F		RealFeel °F	Atmospheric pressure inHg	Wind speed mph	Humidity
Night	☾ +41°	+36°	26.5	▼ N 9.6	64%
Morning	☀ +36°	+28°	26.5	▼ N 8.7	69%
Day	☁ +55°	+55°	26.6	▼ SE 8.9	39%
Evening	☾ +45°	+41°	26.5	▼ SE 7.2	68%

Well Done Foundation				NG			
Operator				Lab Source Description			
Component	Normalized Mol %	Un-Normalized Mol %	GPM	Gross Heating Values (Real, BTU/lb)			
H2S (H2S)	0.0000	0		14.696 PSI @ 60.00 ºF 14.73 PSI @ 60.00 ºF			
Nitrogen (N2)	99.6130	99.613		Dry 17.8 Saturated 18.4 Dry 17.8 Saturated 18.4			
CO2 (CO2)	0.0410	0.041		Calculated Total Sample Properties			
Methane (C1)	0.0000	0		GPA2145-16 *Calculated at Contract Conditions			
Ethane (C2)	0.0000	0	0.0000	Relative Density Real 0.9751 Relative Density Ideal 0.9752			
Propane (C3)	0.0000	0	0.0000	Molecular Weight 28.2455			
I-Butane (IC4)	0.0000	0	0.0000	C6+ Group Properties			
N-Butane (NC4)	0.0000	0	0.0000	Assumed Composition			
I-Pentane (IC5)	0.0000	0	0.0000	C6 - 60.000% C7 - 30.000% C8 - 10.000%			
N-Pentane (NC5)	0.0000	0	0.0000	Field H2S			
Hexanes Plus (C6+)	0.3460	0.346	0.1500	0 PPM			
TOTAL	100.0000	100.0000	0.1500	PROTEND STATUS:			
Method(s): Gas C6+ - GPA 2261, Extended Gas - GPA 2286, Calculations - GPA 2172				Passed By Validator on Dec 20, 2023			
Analyzer Information				DATA SOURCE: Imported			
Device Type: Gas Chromatograph Device Make: Shimadzu				PASSED BY VALIDATOR REASON:			
Device Model: GC-2014 Last Cal Date: Dec 18, 2023				First sample taken @ this point, composition looks reasonable			
Source				VALIDATOR: Dustin Armstrong			
Date				VALIDATOR COMMENTS: OK			
Dustin Armstrong				Dec 20, 2023 4:39 pm Methane = 0 ppm			
Notes							

Hourly forecast for 18.12.2023





19619G	INBE 13 001 POST PLUG	INBe 13 001 POST PLUG	
Sample Point Code	Sample Point Name	Sample Point Location	
Laboratory Services	2023081628	BAG	CES - Spot
Source Laboratory	Lab File No	Container Identity	Sampler
USA	USA	USA	New Mexico
District	Area Name	Field Name	Facility Name
Dec 18, 2023 12:15	Dec 1, 2023	Dec 20, 2023 09:44	Dec 20, 2023
Date Sampled	Date Effective	Date Received	Date Reported
System Administrator			
Ambient Temp (°F)	Flow Rate (Mcf)	Analyst	Press PSI @ Temp °F Source Conditions
Well Done Foundation	NG		
Operator	Lab Source Description		

Component	Normalized Mol %	Un-Normalized Mol %	GPM
H2S (H2S)	0.0000	0	
Nitrogen (N2)	99.6130	99.613	
CO2 (CO2)	0.0410	0.041	
Methane (C1)	0.0000	0	
Ethane (C2)	0.0000	0	0.0000
Propane (C3)	0.0000	0	0.0000
I-Butane (IC4)	0.0000	0	0.0000
N-Butane (NC4)	0.0000	0	0.0000
I-Pentane (IC5)	0.0000	0	0.0000
N-Pentane (NC5)	0.0000	0	0.0000
Hexanes Plus (C6+)	0.3460	0.346	0.1500
TOTAL	100.0000	100.0000	0.1500

Method(s): Gas C6+ - GPA 2261, Extended Gas - GPA 2286, Calculations - GPA 2172

Analyzer Information			
Device Type:	Gas Chromatograph	Device Make:	Shimadzu
Device Model:	GC-2014	Last Cal Date:	Dec 18, 2023

Gross Heating Values (Real, BTU/ft³)			
14.696 PSI @ 60.00 Å°F	14.73 PSI @ 60.00 Å°F		
Dry	Saturated	Dry	Saturated
17.8	18.4	17.8	18.4

Calculated Total Sample Properties	
GPA2145-16 *Calculated at Contract Conditions	
Relative Density Real	Relative Density Ideal
0.9751	0.9752
Molecular Weight	
28.2455	

C6+ Group Properties		
Assumed Composition		
C6 - 60.000%	C7 - 30.000%	C8 - 10.000%

Field H2S
0 PPM

PROTREND STATUS:

Passed By Validator on Dec 20, 2023

DATA SOURCE:

Imported

PASSED BY VALIDATOR REASON:

First sample taken @ this point, composition looks reasonable

VALIDATOR:

Dustin Armstrong

VALIDATOR COMMENTS:

OK

Source	Date	Notes
Dustin Armstrong	Dec 20, 2023 4:39 pm	Methane = 0 ppm

District I
1625 N. French Dr., Hobbs, NM 88240
Phone:(575) 393-6161 Fax:(575) 393-0720
District II
811 S. First St., Artesia, NM 88210
Phone:(575) 748-1283 Fax:(575) 748-9720
District III
1000 Rio Brazos Rd., Aztec, NM 87410
Phone:(505) 334-6178 Fax:(505) 334-6170
District IV
1220 S. St Francis Dr., Santa Fe, NM 87505
Phone:(505) 476-3470 Fax:(505) 476-3462

State of New Mexico
Energy, Minerals and Natural Resources
Oil Conservation Division
1220 S. St Francis Dr.
Santa Fe, NM 87505

DEFINITIONS

Action 300590

DEFINITIONS

Operator: LEASE HOLDERS ACQUISITIONS, INCORPORATED 705 S Mustang Rd #127 Yukon, OK 73099	OGRID: 372878
	Action Number: 300590
	Action Type: [UF-OMA] Post-Plug Methane Monitoring (UF-OMA-MMB)

DEFINITIONS

The Orphan Well Mitigation Activity (OMA) forms are a subset of the OCD's forms exclusively designed for activities related to State of New Mexico's contracted plugging and reclamation activities. Specifically, these forms are used for orphan wells or associated facilities which are in a "Reclamation Fund Approved" status. This status represents wells or facilities where the OCD has acquired a hearing order allowing the OCD to perform plugging or reclamation on wells and associated facilities that no longer have a viable operator to perform the necessary work. These forms are not to be utilized for any other purpose.

District I
1625 N. French Dr., Hobbs, NM 88240
Phone:(575) 393-6161 Fax:(575) 393-0720
District II
811 S. First St., Artesia, NM 88210
Phone:(575) 748-1283 Fax:(575) 748-9720
District III
1000 Rio Brazos Rd., Aztec, NM 87410
Phone:(505) 334-6178 Fax:(505) 334-6170
District IV
1220 S. St Francis Dr., Santa Fe, NM 87505
Phone:(505) 476-3470 Fax:(505) 476-3462

State of New Mexico
Energy, Minerals and Natural Resources
Oil Conservation Division
1220 S. St Francis Dr.
Santa Fe, NM 87505

QUESTIONS

Action 300590

QUESTIONS

Operator: LEASE HOLDERS ACQUISITIONS, INCORPORATED 705 S Mustang Rd #127 Yukon, OK 73099	OGRID: 372878
	Action Number: 300590
	Action Type: [UF-OMA] Post-Plug Methane Monitoring (UF-OMA-MMB)

QUESTIONS

Prerequisites	
[OGRID] Well Operator	[372878] LEASE HOLDERS ACQUISITIONS, INCORPORATED
[API] Well Name and Number	[30-025-37840] INBE 13 #001
Well Status	Plugged (not released)

Monitoring Event Information	
Please answer all the questions in this group.	
Reason For Filing	Post-Plug Methane Monitoring
Date of monitoring	12/18/2023
Latitude	33.36749
Longitude	-103.56411

Monitoring Event Details	
Please answer all the questions in this group.	
Flow rate in cubic meters per day (m³/day)	0.00
Test duration in hours (hr)	1.0
Average flow temperature in degrees Celsius (°C)	12.2
Average gauge flow pressure in kilopascals (kPag)	0.0
Methane concentration in part per million (ppm)	0
Methane emission rate in grams per hour (g/hr)	0.00
Testing Method	Steady State

Monitoring Contractor	
Please answer all the questions in this group.	
Name of monitoring contractor	Well Done New Mexico LLC