



333 Main Street Shelby, Montana 59474 / P.O. Box 10640 Bozeman, MT 59179

(406) 460-0903

TO: Jim Griswold, OCD

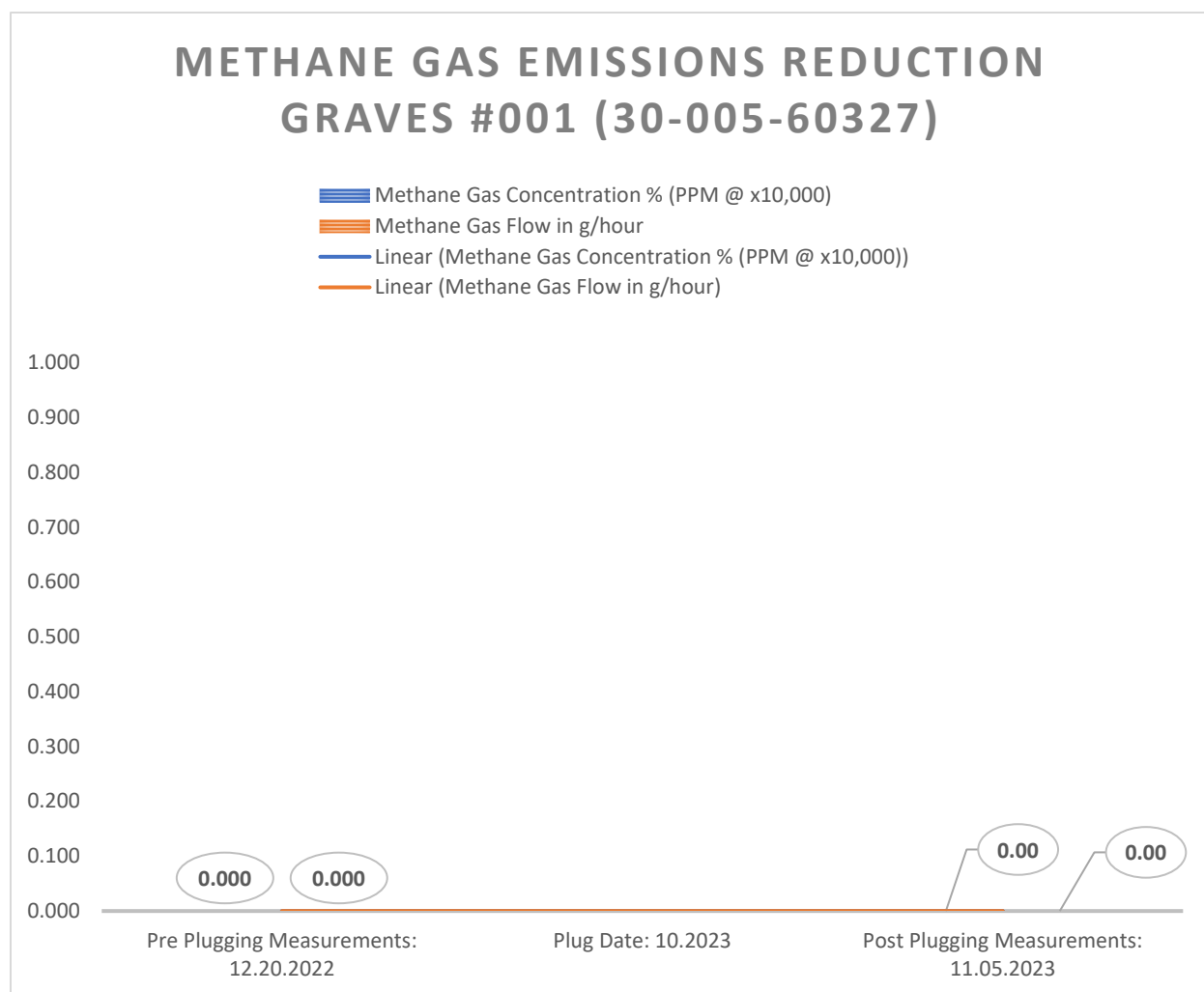
FROM: Curtis Shuck, WDNM

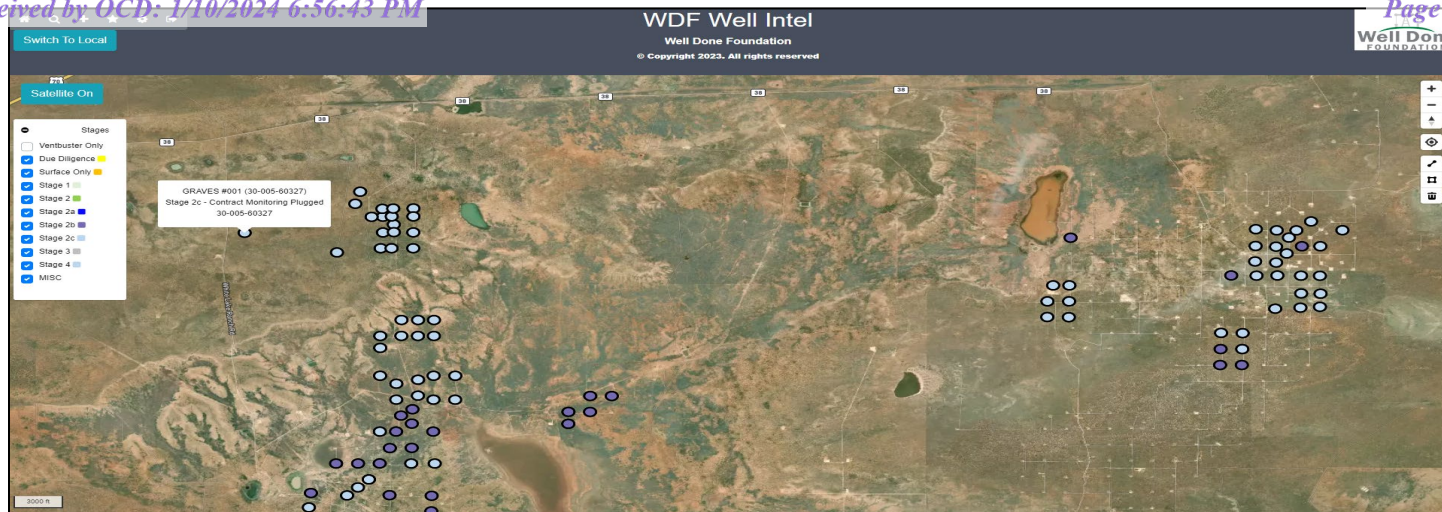
DATE: December 31, 2023


RE: Graves #001 (30-005-60327) Post Plugging Methane Emission Reduction Report

MEMORANDUM



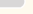

Well Done New Mexico LLC performed Post Plugging Orphan Well Methane Emission Testing, Gas Sampling & Analysis on the 60327 #001 (30-005-60327) on November 5, 2023. The following are the conclusions:



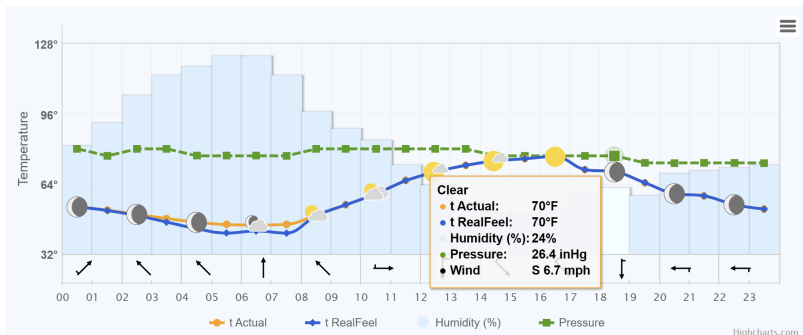


	<small>www.petriscams.com 575.597.3713 2029 W Mainland Mobile NE 65245</small>			Gas Analysis Report
1555SG	Graves #001 Post Plug		Graves #001 Post	
Sample Point Code	Sample Point Name		Sample Point Location	
Laboratory Services	203078648	NA	CES - Spot	
Source Laboratory	Lab File No	Container Identity	Sampler	
USA	USA	USA	New Mexico	
District	Area Name	Field Name	Facility Name	
Nov 5, 2023 17:45	Nov 5, 2023 17:45	Nov 6, 2023 10:52	Nov 20, 2023	
Date Sampled	Date Effective	Date Received	Date Reported	
Admin				
Ambient Temp (°F)	Flow Rate (McF)	Analyst	Press PSI @ Temp °F Source Conditions	
Well Done Foundation			NG	
Operator			Lab Source Description	
Component	Normalized Mol %	Un-Normalized Mol %	GPM	Gross Heating Values (Real, BTU/lb*H) 14.696 PSI @ 60.00 °F 14.773 PSI @ 60.00 °F Dry Saturated Dry Saturated 3.4 4.3 3.4 4.3
H2S (H2S)	0.0000	0		
Nitrogen (N2)	99.8970	99.89789		
CO2 (CO2)	0.0360	0.03553		
Methane (C1)	0.0000	0		Calculated Total Sample Properties GPA215-16 *Calculated at Contract Conditions Relative Density Real Relative Density Ideal 0.9688 0.9689 Molecular Weight 28.0628
Ethane (C2)	0.0000	0	0.0000	
Propane (C3)	0.0000	0	0.0000	
I-Butane (IC4)	0.0000	0	0.0000	
N-Butane (NC4)	0.0000	0	0.0000	
I-Pentane (IC5)	0.0000	0	0.0000	
N-Pentane (NC5)	0.0000	0	0.0000	
Hexanes Plus (C6+)	0.0670	0.06658	0.0290	
TOTAL	100.0000	100.0000	0.0290	
				C6+ Group Properties Assumed Composition C6 - 60.000% C7 - 30.000% C8 - 10.000%
				Field H2S 0 PPM
METHOD(S): Gas C6+ - GPA 2861, Extended Gas - GPA 2286, Calculations - GPA 2172				PROTEND STATUS: Passed By Validator on Nov 20, 2023 PASSED BY VALIDATOR REASON: Close enough to be considered reasonable.
ANALYZER INFORMATION Device Type: Gas Chromatograph Device Make: Shimadzu Device Model: GC-2014 Last Cal Date: Nov 20, 2023				DATA SOURCE: Imported
VALIDATOR: Ashley Russell VALIDATOR COMMENTS: OK				

November 05, 2023

	Atmospheric conditions and temperature °F	RealFeel °F	Atmospheric pressure inHg	Wind speed mph	Humidity
Night	 +52°	+52°	26.4	▼ N 6.3	47%
Morning	 +45°	+41°	26.4	▲ NW 4.3	64%
Day	 +73°	+73°	26.5	▼ SE 7.2	19%
Evening	 +64°	+64°	26.3	▼ SW 5.1	21%

Hourly forecast for 05.11.2023





15555G	Graves #001 Post Plug	Graves #001 Post	
Sample Point Code	Sample Point Name	Sample Point Location	
Laboratory Services	2023078648	NA	CES - Spot
Source Laboratory	Lab File No	Container Identity	Sampler
USA	USA	USA	New Mexico
District	Area Name	Field Name	Facility Name
Nov 5, 2023 17:45	Nov 5, 2023 17:45	Nov 6, 2023 10:52	Nov 20, 2023
Date Sampled	Date Effective	Date Received	Date Reported
Admin			
Ambient Temp (°F)	Flow Rate (Mcf)	Analyst	Press PSI @ Temp °F Source Conditions
Well Done Foundation		NG	
Operator		Lab Source Description	

Component	Normalized Mol %	Un-Normalized Mol %	GPM
H2S (H2S)	0.0000	0	
Nitrogen (N2)	99.8970	99.89789	
CO2 (CO2)	0.0360	0.03553	
Methane (C1)	0.0000	0	
Ethane (C2)	0.0000	0	0.0000
Propane (C3)	0.0000	0	0.0000
I-Butane (IC4)	0.0000	0	0.0000
N-Butane (NC4)	0.0000	0	0.0000
I-Pentane (IC5)	0.0000	0	0.0000
N-Pentane (NC5)	0.0000	0	0.0000
Hexanes Plus (C6+)	0.0670	0.06658	0.0290
TOTAL	100.0000	100.0000	0.0290

Method(s): Gas C6+ - GPA 2261, Extended Gas - GPA 2286, Calculations - GPA 2172

Analyzer Information			
Device Type:	Gas Chromatograph	Device Make:	Shimadzu
Device Model:	GC-2014	Last Cal Date:	Nov 20, 2023

Gross Heating Values (Real, BTU/ft³)			
14.696 PSI @ 60.00 Å°F		14.73 PSI @ 60.00 Å°F	
Dry	Saturated	Dry	Saturated
3.4	4.3	3.4	4.3

Calculated Total Sample Properties	
GPA2145-16 *Calculated at Contract Conditions	
Relative Density Real	Relative Density Ideal
0.9688	0.9689
Molecular Weight	
28.0628	

C6+ Group Properties		
Assumed Composition		
C6 - 60.000%	C7 - 30.000%	C8 - 10.000%

Field H2S
0 PPM

PROTREND STATUS: Passed By Validator on Nov 22, 2023
DATA SOURCE: Imported

PASSED BY VALIDATOR REASON:
 Close enough to be considered reasonable.

VALIDATOR:
 Ashley Russell

VALIDATOR COMMENTS:
 OK

District I
1625 N. French Dr., Hobbs, NM 88240
Phone:(575) 393-6161 Fax:(575) 393-0720
District II
811 S. First St., Artesia, NM 88210
Phone:(575) 748-1283 Fax:(575) 748-9720
District III
1000 Rio Brazos Rd., Aztec, NM 87410
Phone:(505) 334-6178 Fax:(505) 334-6170
District IV
1220 S. St Francis Dr., Santa Fe, NM 87505
Phone:(505) 476-3470 Fax:(505) 476-3462

State of New Mexico
Energy, Minerals and Natural Resources
Oil Conservation Division
1220 S. St Francis Dr.
Santa Fe, NM 87505

DEFINITIONS

Action 302398

DEFINITIONS

Operator: CANYON E & P COMPANY 251 O'Connor Ridge Blvd. Irving, TX 75038	OGRID: 269864
	Action Number: 302398
	Action Type: [UF-OMA] Post-Plug Methane Monitoring (UF-OMA-MMB)

DEFINITIONS

The Orphan Well Mitigation Activity (OMA) forms are a subset of the OCD's forms exclusively designed for activities related to State of New Mexico's contracted plugging and reclamation activities. Specifically, these forms are used for orphan wells or associated facilities which are in a "Reclamation Fund Approved" status. This status represents wells or facilities where the OCD has acquired a hearing order allowing the OCD to perform plugging or reclamation on wells and associated facilities that no longer have a viable operator to perform the necessary work. These forms are not to be utilized for any other purpose.

District I
1625 N. French Dr., Hobbs, NM 88240
Phone:(575) 393-6161 Fax:(575) 393-0720
District II
811 S. First St., Artesia, NM 88210
Phone:(575) 748-1283 Fax:(575) 748-9720
District III
1000 Rio Brazos Rd., Aztec, NM 87410
Phone:(505) 334-6178 Fax:(505) 334-6170
District IV
1220 S. St Francis Dr., Santa Fe, NM 87505
Phone:(505) 476-3470 Fax:(505) 476-3462

State of New Mexico
Energy, Minerals and Natural Resources
Oil Conservation Division
1220 S. St Francis Dr.
Santa Fe, NM 87505

QUESTIONS

Action 302398

QUESTIONS

Operator: CANYON E & P COMPANY 251 O'Connor Ridge Blvd. Irving, TX 75038	OGRID: 269864
	Action Number: 302398
	Action Type: [UF-OMA] Post-Plug Methane Monitoring (UF-OMA-MMB)

QUESTIONS

Prerequisites	
[OGRID] Well Operator	[269864] CANYON E & P COMPANY
[API] Well Name and Number	[30-005-60327] GRAVES #001
Well Status	Plugged (not released)

Monitoring Event Information	
<i>Please answer all the questions in this group.</i>	
Reason For Filing	Post-Plug Methane Monitoring
Date of monitoring	11/05/2023
Latitude	33.63720
Longitude	-104.06102

Monitoring Event Details	
<i>Please answer all the questions in this group.</i>	
Flow rate in cubic meters per day (m³/day)	0.00
Test duration in hours (hr)	1.0
Average flow temperature in degrees Celsius (°C)	22.0
Average gauge flow pressure in kilopascals (kPag)	0.0
Methane concentration in part per million (ppm)	0
Methane emission rate in grams per hour (g/hr)	0.00
Testing Method	Steady State

Monitoring Contractor	
<i>Please answer all the questions in this group.</i>	
Name of monitoring contractor	Well Done New Mexico LLC