

Submit 1 Copy To Appropriate District Office
 District I – (575) 393-6161
 1625 N. French Dr., Hobbs, NM 88240
 District II – (575) 748-1283
 811 S. First St., Artesia, NM 88210
 District III – (505) 334-6178
 1000 Rio Brazos Rd., Aztec, NM 87410
 District IV – (505) 476-3460
 1220 S. St. Francis Dr., Santa Fe, NM 87505

State of New Mexico
 Energy, Minerals and Natural Resources

Form C-103
 Revised July 18, 2013

OIL CONSERVATION DIVISION
 1220 South St. Francis Dr.
 Santa Fe, NM 87505

WELL API NO. 30-025-00996
5. Indicate Type of Lease STATE <input type="checkbox"/> FEE <input type="checkbox"/>
6. State Oil & Gas Lease No.
7. Lease Name or Unit Agreement Name JP Collier
8. Well Number #001
9. OGRID Number 372076
10. Pool name or Wildcat BAGLEY;PERMO PENN, NORTH

SUNDRY NOTICES AND REPORTS ON WELLS
 (DO NOT USE THIS FORM FOR PROPOSALS TO DRILL OR TO DEEPEN OR PLUG BACK TO A DIFFERENT RESERVOIR. USE "APPLICATION FOR PERMIT" (FORM C-101) FOR SUCH PROPOSALS.)

1. Type of Well: Oil Well <input checked="" type="checkbox"/> Gas Well <input type="checkbox"/> Other <input type="checkbox"/>
2. Name of Operator Lease Holders Acquisitions
3. Address of Operator 705 S Mustang rd #127, Yukon, OK 73099
4. Well Location Unit Letter: F : 1980 feet from the N line and 1980 feet from the W line Section 10 Township 11S Range 33E NMPM County: Lea
11. Elevation (Show whether DR, RKB, RT, GR, etc.)

12. Check Appropriate Box to Indicate Nature of Notice, Report or Other Data

NOTICE OF INTENTION TO:

PERFORM REMEDIAL WORK ☐ PLUG AND ABANDON ☐
 TEMPORARILY ABANDON ☐ CHANGE PLANS ☐
 PULL OR ALTER CASING ☐ MULTIPLE COMPL ☐
 DOWNHOLE COMMINGLE ☐
 CLOSED-LOOP SYSTEM ☐
 OTHER: ☐

SUBSEQUENT REPORT OF:

REMEDIAL WORK ☐ ALTERING CASING ☐
 COMMENCE DRILLING OPNS. ☐ P AND A ☒
 CASING/CEMENT JOB ☐
 OTHER: ☐

13. Describe proposed or completed operations. (Clearly state all pertinent details, and give pertinent dates, including estimated date of starting any proposed work). SEE RULE 19.15.7.14 NMAC. For Multiple Completions: Attach wellbore diagram of proposed completion or recompletion.

See Plugging Procedure/Events Below

Spud Date:

Rig Release Date:

I hereby certify that the information above is true and complete to the best of my knowledge and belief.

SIGNATURE: Ethan Wakefield TITLE: Authorized Representative DATE: 12/18/2023

Type or print name: Ethan Wakefield E-mail address: e.wakefield@dwsrigs.com PHONE: 405-343-7736

For State Use Only

APPROVED BY: John Garcia TITLE: Supervisor DATE: 1/18/24

Conditions of Approval (if any):

Lease Holders Acquisitions

Plug And Abandonment End Of Well Report

JP Collier #001

1980' FNL & 1980' FWL, Section 10, 11S, 33E

Lea County, NM / API 30-025-00996

Work Summary:

- 11/4/23** Made BLM and NMOCD P&A operations notifications at 9:00 AM MST.
- 11/5/23** Arrived on location and held safety meeting. Moved unit and equipment to location. Prepped road, location and WH using backhoe. Rigged up unit. Secured well.
- 11/6/23** Arrived on location and held safety meeting. Checked well pressures. Bleed down well. Waited for the mechanic to assess fuel problems. Cleared fuel lines. R/U. Removed WH. L/D 2 pop joints. BOP requires different bolts for installation. Installed WH and secured well. Dug up cellar by hand. Moved crew to previous location to load up 71 joints of 2-3/8" tubing on trailer. Shut down for the day.
- 11/7/23** Arrived on location and held safety meeting. Checked well pressures. Bleed down well. NU BOP and function tested. Load up pipe float with work string (315 joints). Used rig up truck to move pipe float. P/U 51 joints. Shut in and secured well.
- 11/8/23** Arrived on location and held safety meeting. Checked well pressures. Bleed down well. TIH and tag at 8740'. R/U pump and swivel. Cleaned out from 8740' to 9025'. Stand back swivel. TOOH 13 stands. Shut in and secured well for the day.
- 11/9/23** Arrived on location and held safety meeting. Checked well pressures. Bleed down well. TIH with 10 stands. P/U swivel. Cleaned from 9025' to 9394'. Lost circulation. TOOH with 150 stands. P/U CR. Shut in for the day.

- 11/10/23** Arrived on location and held safety meeting. Checked well pressures. P/U CR. TIH and set CR at 9345'. R/U cementers. Successfully pressure tested tubing. Stung out of CR. Circulated hole with 200 bbls. Attempted to pressure test casing but test failed. TOOH. R/U wireline services. RIH and logged well. POOH. TIH with 76 stands. Shut in and secured well for the day.
- 11/11/23** Arrived on location and held safety meeting. Checked well pressures. TIH with 77 stands. R/U cementing services. Pumped plug #1 from 9345' to 9198'. R/D cementing services. L/D 5 joints and TOOH with 13 stands. WOC 4 hours. Tagged plug #1 at 9151'. R/U cementing services. Pumped mud/gel spacer from 9151' to 8550'. L/D 19 joints. R/U cementing services. Pumped plug #2 from 8550' to 8332'. L/D 10 joints and TOOH with 15 stands. WOC overnight. Shut in and secured well.
- 11/12/23** Arrived on location and held safety meeting. Checked well pressures. Heavy fog forced a late start. TIH and tagged plug #2 at 8265'. R/U cementing services. Pumped mud/gel spacer from 8265' to 7378'. L/D 27 joints and TOOH. R/U wireline services. Ran out of line at 6830'. R/D wireline. Shut in and secured well for the day.
- 11/13/23** Arrived on location and held safety meeting. Checked well pressures. R/U wireline services. TIH and perforated at 7378'. POOH. R/D wireline services. P/U packer. TIH with packer and set at 7064'. R/U cementing services. Attempted to establish an injection rate but was unsuccessful. TOOH with packer. TIH to 7433'. R/U cementing services. Pumped plug #3 from 7433' to 7160'. R/D cementers. L/D 10 joints. TOOH with 10 stands. Shut in and secured well for the day.
- 11/14/23** Arrived on location and held safety meeting. Checked well pressures. TIH and tagged plug #3 at 7150'. R/U cementing services. Attempted to pressure test casing but was unsuccessful. Pumped mud/gel spacer from 7150' to 6925'. R/D cementers. L/D 6 joints and TOOH. R/U wireline services. RIH and perforated at 6925'. POOH. R/D wireline services. P/U 5.5" packer. TIH and set at 6340' with EOT at 6435'. R/U cementing services. Attempted to establish and injection rate, but casing pressured up. Unset packer and TOOH. L/D packer. TIH to 7002'. R/U cementers. Pumped plug #4 from 7002' to 6455'. R/D cementers. L/D 18 joints and TOOH. Shut in and secured well.
- 11/15/23** Arrived on location and held safety meeting. Checked well pressures. TIH and tagged plug #4 at 6403'. R/U cementers. Attempted to pressure test casing but test failed. Pumped mud/gel spacer from 6403' to 5182'. R/D cementers. L/D 39 joints and TOOH. R/U wireline services. RIH and perforated at 5182'. POOH. P/U 5.5"

packer. TIH and set packer at 4826', with EOT at 4921'. R/U cementing services. Attempted to establish and injection rate but was unsuccessful, casing pressured up. R/D cementers. Unset packer and TOOH. L/D packer. TIH to 5237'. R/U cementers. Pumped plug #5 from 5237' to 4967'. R/D cementers. L/D 9 joints and TOOH. WOC overnight. Shut in and secured well.

11/16/23 Arrived on location and held safety meeting. Checked well pressures. TIH and tagged plug #5 at 4952'. R/U cementing services. Attempted to pressure test casing but test failed. Pumped mud/gel spacer from 4952' to 4249'. R/D cementers. L/D 22 joints and TOOH. R/U wireline services. RIH and perforated at 4249'. POOH. R/D wireline. R/U 5.5" packer. TIH and set packer at 4102', with end of tubing at 4195'. R/U cementing services. Attempted to establish an injection rate but casing pressured up. Unset packer and TOOH. L/D packer. TIH to 4300'. R/U cementing services. Pumped plug #6 from 4300' to 4099'. R/D cementers. L/D 8 joints and TOOH. WOC overnight. Shut in and secured well.

11/17/23 Arrived on location and held safety meeting. Checked well pressures. TIH and tagged plug #6 at 4195'. R/U cementing services. Continued pumping plug #6 from 4195' to 4099'. R/D cementers. L/D 4 joints and TOOH. WOC 4 hours. TIH and tagged plug #6 at 4071'. R/U cementing services. Attempted to pressure test casing but test failed. Pumped mud/gel spacer from 4071' to 3775'. R/D cementers. L/D 10 joints and TOOH. R/U wireline services. RIH and perforated at 3775'. R/D wireline. P/U 5.5" packer. TIH and set it at 3504' with end of tubing at 3599'. R/U cementers. Attempted to establish an injection rate but casing pressured up. Unset packer and TOOH. L/D packer. TIH to 3819'. R/U cementing services. Pumped plug #7 from 3819' to 3625'. R/D cementers. L/D 7 joints and TOOH. WOC overnight. Shut in and secured well.

11/18/23 Arrived on location and held safety meeting. Checked well pressures. TIH and tagged plug #7 at 3610'. R/U cementing services. Successfully pressure tested casing to 800 psi. Pumped mud/gel spacer from 3610' to 2503'. R/D cementers. L/D 35 joints and TOOH. R/U wireline services. TIH and perforated at 2503'. R/D wireline. P/U 5.5" packer. TIH and set at 2221' with end of tubing at 2314'. R/U cementers. Pumped plug #8 from 2503' to 2353'. R/D cementers. Unset packer and TOOH. WOC 4 hours. TIH and tagged plug #8 at 2221'. R/U cementing services. Pumped mud/gel spacer from 2221' to 1855'. R/D cementers. L/D 12 joints. Shut in and secured well for the day.

11/19/23 Arrived on location and held safety meeting. Checked well pressures. TOOH. R/U wireline services. RIH and perforated at 1855'. POOH.

R/D wireline. P/U 5.5" packer. TIH and set packer at 1568' with end of tubing at 1663'. R/U cementers. Successfully established an injection rate. Pumped plug #9 from 1855' to 1705'. R/D cementers. Unset packer and TOOH. WOC 4 hours. TIH and tagged plug #9 at 1663'. R/U cementers. Pumped mud/gel spacer from 1663' to 371'. R/D cementers. L/D tubing. R/U wireline services. RIH and perforated at 371'. POOH. R/D wireline. R/U cementing services. Successfully circulated water down 5.5" casing, into perforations at 371', and out BH at surface. Pumped cement down 5.5" casing, into perforations at 371', and out BH at surface. R/D cementers. R/D floor. ND BOP, NU WH. Prepared to MOL.

11/20/23 Arrived on location and held safety meeting. R/D unit and equipment. Prepped equipment for rig move. Completed rig maintenance. Shut down for the day.

12/16/23 Arrived on location and held safety meeting. Used backhoe to safely expose wellhead. Set up welding unit on location. Performed wellhead cutoff. Removed old wellhead. Cement was to surface in both casing strings. Welder attached marker per NMOCD regulations.

Plug Summary:

Plug #1: (Perforations, 9,345'-9,151', 17 Sacks Class H Cement)

P/U CR. TIH and set CR at 9345'. R/U cementers. Successfully pressure tested tubing. Stung out of CR. Circulated hole with 200 bbls. Attempted to pressure test casing but test failed. TOOH. R/U wireline services. RIH and logged well. POOH. TIH. R/U cementing services. Pumped plug #1 from 9345' to 9198'. R/D cementing services. L/D 5 joints and TOOH with 13 stands. WOC 4 hours. Tagged plug #1 at 9151'.

Plug #2: (Wolfcamp Formation Top, 8,550'-8,265', 24 Sacks Class H Cement)

R/U cementing services. Pumped plug #2 from 8550' to 8332'. L/D 10 joints and TOOH with 15 stands. WOC overnight. TIH and tagged plug #2 at 8265'.

Plug #3: (Abo Formation Top, 7,433'-7,150', 31 Sacks Class H Cement)

R/U wireline services. TIH and perforated at 7378'. POOH. R/D wireline services. P/U packer. TIH with packer and set at 7064'. R/U cementing services. Attempted to establish an injection rate but was unsuccessful. TOOH with packer. TIH to 7433'. R/U cementing

services. Pumped plug #3 from 7433' to 7160'. R/D cementers. WOC overnight. TIH and tagged plug #3 at 7150'.

Plug #4: (Drinkard and Tubb Formation Tops, 7,002'-6,403', 61 Sacks Class H Cement)

R/U wireline services. RIH and perforated at 6925'. POOH. R/D wireline services. P/U 5.5" packer. TIH and set at 6340' with EOT at 6435'. R/U cementing services. Attempted to establish and injection rate, but casing pressured up. Unset packer and TOOH. L/D packer. TIH to 7002'. R/U cementers. Pumped plug #4 from 7002' to 6455'. WOC overnight. TIH and tagged plug #4 at 6403'.

Plug #5: (Glorieta Formation Top, 5,237'-4,952', 30 Sacks Type I/II Cement)

R/U wireline services. RIH and perforated at 5182'. POOH. P/U 5.5" packer. TIH and set packer at 4826', with EOT at 4921'. R/U cementing services. Attempted to establish and injection rate but was unsuccessful, casing pressured up. R/D cementers. Unset packer and TOOH. L/D packer. TIH to 5237'. R/U cementers. Pumped plug #5 from 5237' to 4967'. R/D cementers. WOC overnight. TIH and tagged plug #5 at 4952'.

Plug #6: (Intermediate Casing Shoe, 4,300'-4,071', 34 Sacks Type I/II Cement)

R/U wireline services. RIH and perforated at 4249'. POOH. R/D wireline. R/U 5.5" packer. TIH and set packer at 4102', with end of tubing at 4195'. R/U cementing services. Attempted to establish an injection rate but casing pressured up. Unset packer and TOOH. L/D packer. TIH to 4300'. R/U cementing services. Pumped plug #6 from 4300' to 4099'. R/D cementers. L/D 8 joints and TOOH. WOC overnight. TIH and tagged plug #6 at 4195'. R/U cementing services. Continued pumping plug #6 from 4195' to 4099'. R/D cementers. L/D 4 joints and TOOH. WOC 4 hours. TIH and tagged plug #6 at 4071'.

Plug #7: (San Andres Formation Top, 3,819'-3,610', 22 Sacks Type I/II Cement)

R/U wireline services. RIH and perforated at 3775'. R/D wireline. P/U 5.5" packer. TIH and set it at 3504' with end of tubing at 3599'. R/U cementers. Attempted to establish an injection rate but casing pressured up. Unset packer and TOOH. L/D packer. TIH to 3819'. R/U cementing services. Pumped plug #7 from 3819' to 3625'. R/D

cementers. L/D 7 joints and TOO H. WOC overnight. TIH and tagged plug #7 at 3610'.

Plug #8: (Yates Formation Top, 2,503'-2,221', 39 Sacks Type I/II Cement)

R/U wireline services. TIH and perforated at 2503'. R/D wireline. P/U 5.5" packer. TIH and set at 2221' with end of tubing at 2314'. R/U cementers. Pumped plug #8 from 2503' to 2353'. R/D cementers. Unset packer and TOO H. WOC 4 hours. TIH and tagged plug #8 at 2221'.

Plug #9: (Rustler Formation Top, 1,855'-1,663', 39 Sacks Type I/II Cement)

R/U wireline services. RIH and perforated at 1855'. POOH. R/D wireline. P/U 5.5" packer. TIH and set packer at 1568' with end of tubing at 1663'. R/U cementers. Successfully established an injection rate. Pumped plug #9 from 1855' to 1705'. R/D cementers. Unset packer and TOO H. WOC 4 hours. TIH and tagged plug #9 at 1663'.

Plug #10: (Surface, 371'-Surface', 190 Sacks Type I/II Cement (0 sx for top off))

R/U wireline services. RIH and perforated at 371'. POOH. R/D wireline. R/U cementing services. Successfully circulated water down 5.5" casing, into perforations at 371', and out BH at surface. Pumped cement down 5.5" casing, into perforations at 371', and out BH at surface. Performed wellhead cutoff. Removed old wellhead. Cement was to surface in both casing strings. Welder attached marker per NMOCD regulations.

Completed Wellbore Diagram

LEASE HOLDERS ACQUISITIONS

JP Collier #001

API: 30-025-00996

Lea County, New Mexico

Surface Casing

13.375" 48# @ 321 ft

OH: 17.25"

Plug 5

5237 feet - 4952 feet

285 foot plug

30 Sacks of Type I/II Cement

Plug 4

7002 feet - 6403 feet

599 foot plug

61 Sacks of Class H Cement

Plug 3

7433 feet - 7150 feet

283 foot plug

31 Sacks of Class H Cement

Plug 2

8550 feet - 8265 feet

285 foot plug

24 Sacks of Class H Cement

Plug 1

9345' feet - 9151 feet

203 foot plug

17 sacks of Class H Cement

Perforations

9466 ft - 9474 ft

9862 ft - 9872 ft

10,025 ft - 10,035 ft

10,058 ft - 10,076 ft

Formation

Rustler - 1805'

Yates - 2453'

San Andres - 3725'

Glorieta - 5132'

Tubb - 6555'

Drinkard - 6875'

Abo - 7328'

Wolfcamp - 8500'

Intermediate Casing

8.625" 32# @ 4199 feet

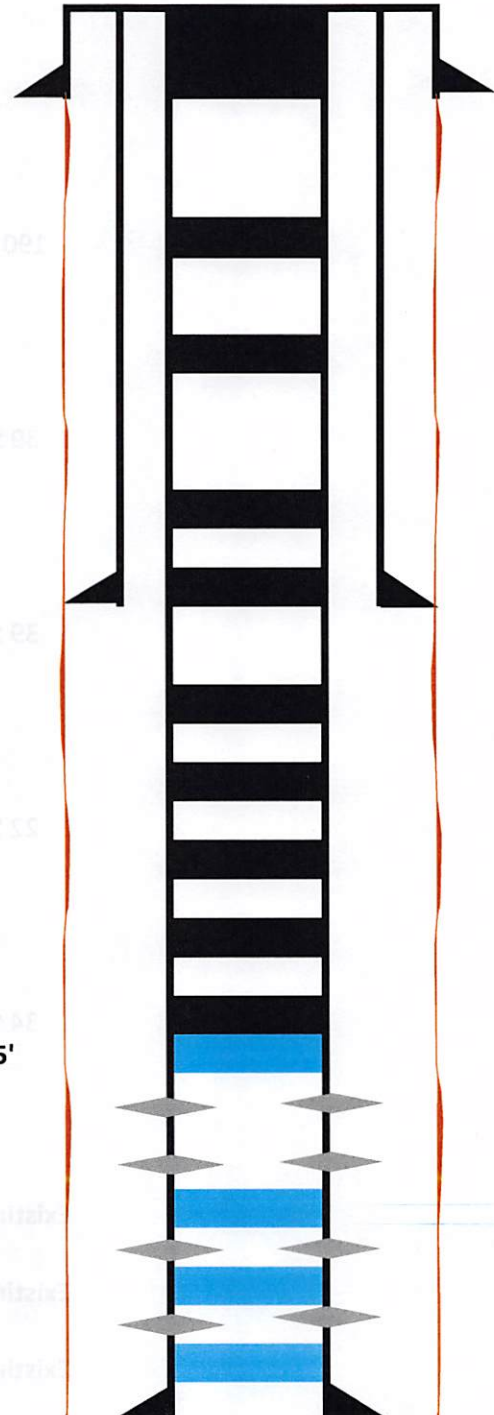
OH: 11"

Retainer @ 9345'

Production Casing

5.5" 17# @ 11,187 feet

OH: 7.875"



Plug 10

371 feet - surface

371 foot plug

190 Sacks of Type I/II Cement

Plug 9

1855 feet - 1663 feet

192 foot plug

39 Sacks of Type I/II Cement

Plug 8

2503 feet - 2221 feet

282 foot plug

39 Sacks of Type I/II Cement

Plug 7

3819 feet - 3610 feet

209 foot plug

22 Sacks of Type I/II Cement

Plug 6

4300 feet - 4071 feet

229 foot plug

34 Sacks of Type I/II Cement

Existing CIBP at 9900'

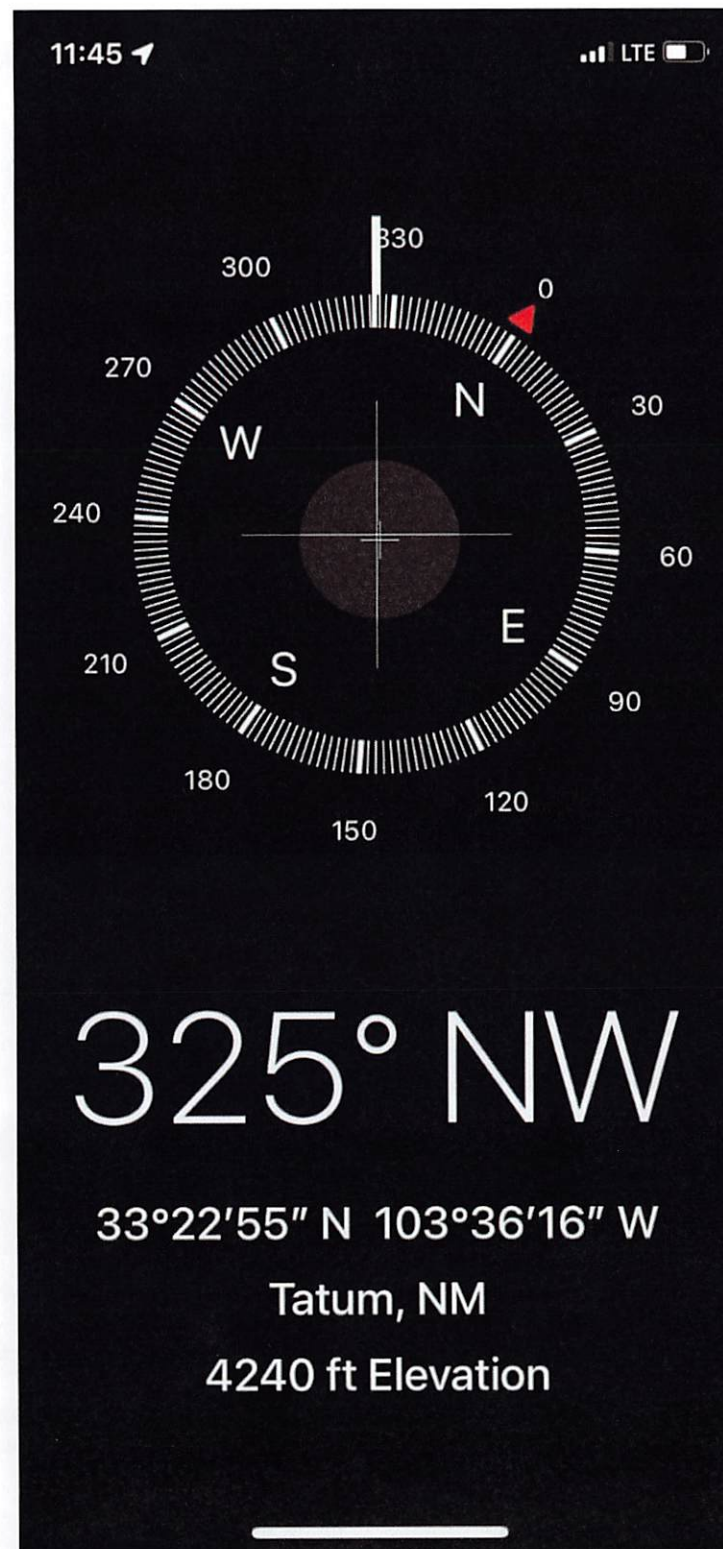
Existing Retainer at 10,050"

Existing CIBP at 10,110"











District I
1625 N. French Dr., Hobbs, NM 88240
Phone:(575) 393-6161 Fax:(575) 393-0720
District II
811 S. First St., Artesia, NM 88210
Phone:(575) 748-1283 Fax:(575) 748-9720
District III
1000 Rio Brazos Rd., Aztec, NM 87410
Phone:(505) 334-6178 Fax:(505) 334-6170
District IV
1220 S. St Francis Dr., Santa Fe, NM 87505
Phone:(505) 476-3470 Fax:(505) 476-3462

State of New Mexico
Energy, Minerals and Natural Resources
Oil Conservation Division
1220 S. St Francis Dr.
Santa Fe, NM 87505

CONDITIONS

Action 297964

CONDITIONS

Operator: LEASE HOLDERS ACQUISITIONS, INCORPORATED 705 S Mustang Rd #127 Yukon, OK 73099	OGRID: 372878
	Action Number: 297964
	Action Type: [C-103] Sub. Plugging (C-103P)

CONDITIONS

Created By	Condition	Condition Date
jagarcia	None	1/18/2024