

Submit 1 Copy To Appropriate District

Office

District I - (575) 393-6161

1625 N. French Dr., Hobbs, NM 88240

District II - (575) 748-1283

811 S. First St., Artesia, NM 88210

District III - (505) 334-6178

1000 Rio Brazos Rd., Aztec, NM 87410

District IV - (505) 476-3460

1220 S. St. Francis Dr., Santa Fe, NM

87505

State of New Mexico
Energy, Minerals and Natural Resources

OIL CONSERVATION DIVISION
1220 South St. Francis Dr.
Santa Fe, NM 87505

Form C-103
Revised July 18, 2013

SUNDRY NOTICES AND REPORTS ON WELLS (DO NOT USE THIS FORM FOR PROPOSALS TO DRILL OR TO DEEPEN OR PLUG BACK TO A DIFFERENT RESERVOIR. USE "APPLICATION FOR PERMIT" (FORM C-101) FOR SUCH PROPOSALS.)		WELL API NO. 30-025-06662
1. Type of Well: Oil Well <input type="checkbox"/> Gas Well <input checked="" type="checkbox"/> Other		5. Indicate Type of Lease STATE <input checked="" type="checkbox"/> FEE <input type="checkbox"/>
2. Name of Operator Energy Acumen LLC		6. State Oil & Gas Lease No.
3. Address of Operator 10103 Gutierrez Rd NE, Albuquerque, NM 87111		7. Lease Name or Unit Agreement Name Alves
4. Well Location Unit Letter: G : 1980 feet from the N line and 1980 feet from the E line Section 18 Township 21S Range 37E NMPM County: Eddy		8. Well Number: 002
11. Elevation (Show whether DR, RKB, RT, GR, etc.)		9. OGRID Number: 373817
10. Pool name or Wildcat EUMONT;YATES-7 RVRS-QUEEN		

12. Check Appropriate Box to Indicate Nature of Notice, Report or Other Data

NOTICE OF INTENTION TO:		SUBSEQUENT REPORT OF:	
PERFORM REMEDIAL WORK <input type="checkbox"/>	PLUG AND ABANDON <input type="checkbox"/>	REMEDIAL WORK <input type="checkbox"/>	ALTERING CASING <input type="checkbox"/>
TEMPORARILY ABANDON <input type="checkbox"/>	CHANGE PLANS <input type="checkbox"/>	COMMENCE DRILLING OPNS. <input type="checkbox"/>	P AND A <input checked="" type="checkbox"/>
PULL OR ALTER CASING <input type="checkbox"/>	MULTIPLE COMPL <input type="checkbox"/>	CASING/CEMENT JOB <input type="checkbox"/>	
DOWNHOLE COMMINGLE <input type="checkbox"/>			
CLOSED-LOOP SYSTEM <input type="checkbox"/>			
OTHER: <input type="checkbox"/>		OTHER: <input type="checkbox"/>	

13. Describe proposed or completed operations. (Clearly state all pertinent details, and give pertinent dates, including estimated date of starting any proposed work). SEE RULE 19.15.7.14 NMAC. For Multiple Completions: Attach wellbore diagram of proposed completion or recompletion.

See Plugging Procedure/Events Below

Spud Date:

Rig Release Date:

I hereby certify that the information above is true and complete to the best of my knowledge and belief.

SIGNATURE

TITLE: Authorized Representative DATE: 12/21/23

Type or print name: Ethan Wakefield

E-mail address: e.wakefield@dwsrigs.com

PHONE: (405)343-7736

For State Use Only

APPROVED BY: John Garcia

TITLE Supervisor

DATE 1/18/24

Conditions of Approval (if any):

Energy Acumen LLC

Plug And Abandonment End Of Well Report

Alves #002

1980' FNL & 1980' FEL, Section 18, 21S, 37E

Lea County, NM / API 30-025-06662

Work Summary:

- 12/2/23** Made BLM and NMOCD P&A operations notifications at 9:00 AM MST.
- 12/3/23** Held safety meeting. Moved rig and equipment to location. Prepared location, spotted equipment, and rigged up. Checked well pressures. NU BOP. Tried to pull the tubing but the tubing string was stuck. Shut down due to high winds. Secured the well.
- 12/4/23** Arrived on location and held safety meeting. Checked well pressures. R/U wireline services. RIH and free point and shot tubing off at 3405'. POOH. R/D wireline. L/D 109 joints of 2-7/8" tubing. P/U casing scraper. TIH with scraper to 3402'. TOOH. Shut in and secured well.
- 12/5/23** Arrived on location and held safety meeting. Checked well pressures. P/U CR. TIH and set CR at 3402'. R/U cementing services. Rolled hole with 85 bbls. TOOH. R/U wireline services. RIH and logged well. POOH. Shut in well for gas leak detection by Well Done.
- 12/6/23** Arrived on location and held safety meeting. Checked well pressures. TIH and tagged CR at 3402'. R/U cementing services. Pumped plug #1 from 3402' to 3182'. R/D cementers. TOOH. WOC 4 hours. TIH and tagged plug #1 at 3244'. R/U cementers. Pumped mud/gel spacer from 3244' to 2674'. R/D cementers. L/D 29 joints. R/U cementers. Pumped plug #2 from 2674' to 2375'. L/D 3 joints and TOOH. WOC overnight. Shut in and secured well.
- 12/7/23** Arrived on location and held safety meeting. Checked well pressures. TIH and tagged plug #2 at 2356'. R/U cementers. Pumped mud/gel

spacer from 2356 to 1440'. TOOH. R/U wireline services. RIH and perforated at 1440'. POOH. P/U packer. TIH and set packer. Unable to establish an injection rate. TOOH. TIH with tubing to 1491'. R/U cementing services. Pumped plug #3 from 1491' to 1130'. TOOH. WOC 4 hours. TIH and tagged plug #3 at 1196'. R/U cementing services. Continued pumping plug #3 with 12 sx. TOOH. WOC overnight. Shut in and secured well.

- 12/8/23** Arrived on location and held safety meeting. Checked well pressures. Performed rig maintenance. Waited on now closing unit. Energy hauled water and disposal.
- 12/9/23** Arrived on location and held safety meeting. Checked well pressures. Removed old closing unit and installed new one. Function tested closing unit. TIH and tagged plug #3 at 1196'. R/U cementing serviced. Continued pumping plug #3 from 1196 to 1096'. TOOH. WOC. Could not TIH due to high winds. Shut in and secured well.
- 12/10/23** Arrived on location and held safety meeting. Checked well pressures. TIH and tagged plug #3 at 1062'. R/U cementing services. Pumped mud/gel spacer from 1062' to 224'. TOOH. R/U wireline services. RIH and perforated at 224'. POOH. TIH with packer. Set packer at 209'. Pumped through packer and out BH valve at surface. TOOH. L/D packer. R/U cementing services. Pumped plug #4 down casing, into perforations, and out BH valve at surface. R/D equipment and prepare to MOL.
- 12/20/23** Arrived on location and held safety meeting. Used backhoe to safely expose wellhead. Set up welding unit on location. Performed wellhead cutoff. Removed old wellhead. Topped off both strings with 5 sx. Welder attached marker per NMOCD regulations.

Plug Summary:

Plug #1: (Perforations, and Queen Formations Tops, 3,402'-3,224', 25 Sacks Type I/II Cement)

P/U CR. TIH and set CR at 3402'. R/U cementing services. Rolled hole with 85 bbls. TOOH. R/U wireline services. RIH and logged well. POOH. Shut in well for gas leak detection by Well Done. TIH and tagged CR at 3402'. R/U cementing services. Pumped plug #1 from 3402' to 3182'. R/D cementers. TOOH. WOC 4 hours. TIH and tagged plug #1 at 3244'.

Plug #2: (Yates and Salt Formation Tops, 2,674'-2,356', 33 Sacks Type I/II Cement)

R/U cementers. Pumped plug #2 from 2674' to 2375'. L/D 3 joints and TOOH. WOC overnight. TIH and tagged plug #2 at 2356'.

Plug #3: (Salt and Anhy Formation Tops, 1,491'-1,062', 66 Sacks Type I/II Cement)

R/U wireline services. RIH and perforated at 1440'. POOH. P/U packer. TIH and set packer. Unable to establish an injection rate. TOOH. TIH with tubing to 1491'. R/U cementing services. Pumped plug #3 from 1491' to 1130'. TOOH. WOC 4 hours. TIH and tagged plug #3 at 1196'. R/U cementing services. Continued pumping plug #3 with 12 sx. TOOH. WOC overnight. TIH and tagged plug #3 at 1196'. R/U cementing serviced. Continued pumping plug #3 from 1196 to 1096'. TOOH. WOC. TIH and tagged plug #3 at 1062'.

Plug #4: (Surface, 224'-Surface, 194 Sacks Type I/II Cement (5 sx for top off))

R/U wireline services. RIH and perforated at 224'. POOH. TIH with packer. Set packer at 209'. Pumped through packer and out BH valve at surface. TOOH. L/D packer. R/U cementing services. Pumped plug #4 down casing, into perforations, and out BH valve at surface. Performed wellhead cutoff. Removed old wellhead. Topped off both strings with 5 sx. Welder attached marker per NMOCD regulations.

Completed Wellbore Diagram

Energy Acuman LLC
Alves #002
API: 30-025-06662
Lea, New Mexico

Plug 4

224 feet - surface
224 foot plug
194 Sacks of Type I/II Cement

Plug 3

1491 feet - 1062 feet
429 foot plug
66 Sacks of Type I/II Cement

Plug 2

2674 feet - 2356 feet
318 foot plug
33 Sacks of Type I/II Cement

Plug 1

3402 feet - 3224 feet
178 foot plug
25 sacks of Type I/II Cement

Surface Casing

13.378" 48# @ 174'
OH: 17"

Formation

Anhy - 1230 feet
Salt - 1390 feet
Salt - 2475 feet
Yates - 2610 feet
Queen - 3399 feet
7 Rivers - 3490 feet
Grayburg - 3644 feet

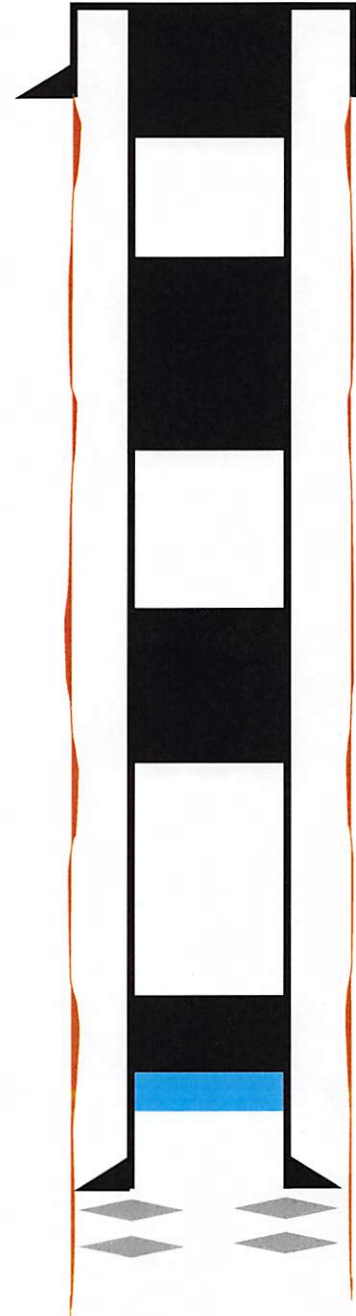
Retainer @ 3402'

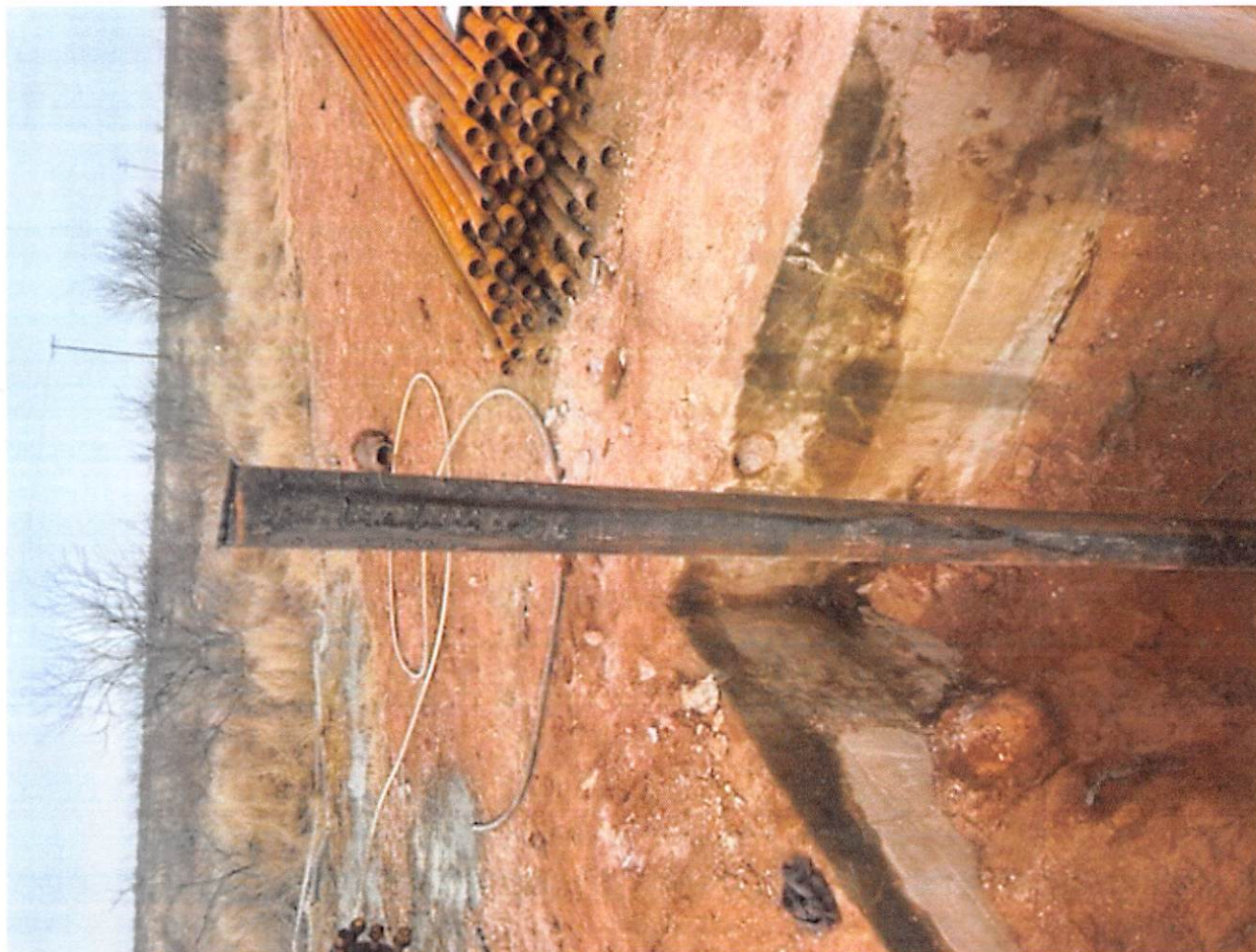
Perforations

3495 feet - 3595 feet

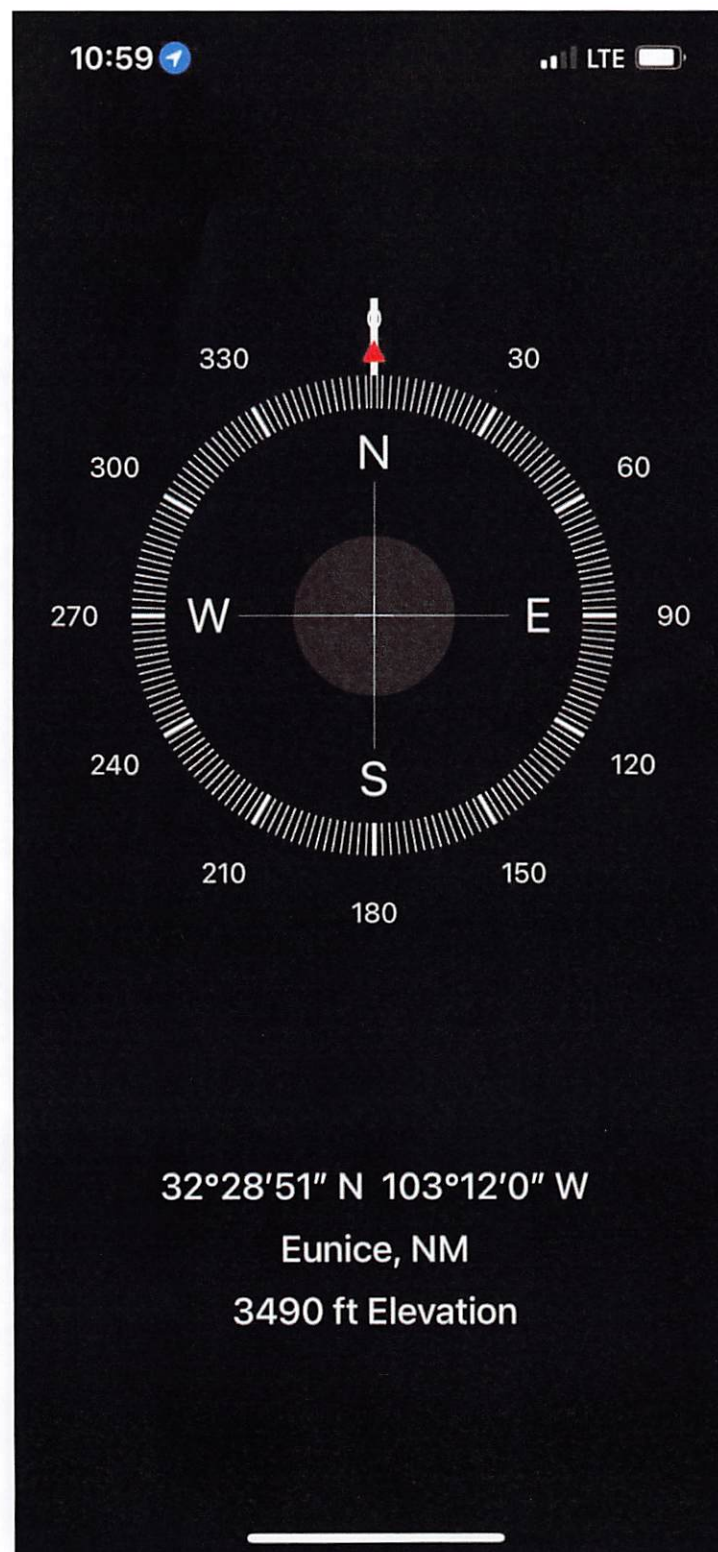
Production Casing

5.5" 15.5# @ 3463'
OH: 7.875"











District I
1625 N. French Dr., Hobbs, NM 88240
Phone:(575) 393-6161 Fax:(575) 393-0720

District II
811 S. First St., Artesia, NM 88210
Phone:(575) 748-1283 Fax:(575) 748-9720

District III
1000 Rio Brazos Rd., Aztec, NM 87410
Phone:(505) 334-6178 Fax:(505) 334-6170

District IV
1220 S. St Francis Dr., Santa Fe, NM 87505
Phone:(505) 476-3470 Fax:(505) 476-3462

State of New Mexico
Energy, Minerals and Natural Resources
Oil Conservation Division
1220 S. St Francis Dr.
Santa Fe, NM 87505

CONDITIONS

Action 298726

CONDITIONS

Operator: ROBINSON OIL INC P.O. Box 1829 Eunice, NM 88231	OGRID: 37636
	Action Number: 298726
	Action Type: [C-103] Sub. Plugging (C-103P)

CONDITIONS

Created By	Condition	Condition Date
jagarcia	None	1/18/2024