

Submit 1 Copy To Appropriate District Office
 District I – (575) 393-6161
 1625 N. French Dr., Hobbs, NM 88240
 District II – (575) 748-1283
 811 S. First St., Artesia, NM 88210
 District III – (505) 334-6178
 1000 Rio Brazos Rd., Aztec, NM 87410
 District IV – (505) 476-3460
 1220 S. St. Francis Dr., Santa Fe, NM 87505

State of New Mexico
 Energy, Minerals and Natural Resources

Form C-103
 Revised July 18, 2013

OIL CONSERVATION DIVISION
 1220 South St. Francis Dr.
 Santa Fe, NM 87505

SUNDRY NOTICES AND REPORTS ON WELLS (DO NOT USE THIS FORM FOR PROPOSALS TO DRILL OR TO DEEPEN OR PLUG BACK TO A DIFFERENT RESERVOIR. USE "APPLICATION FOR PERMIT" (FORM C-101) FOR SUCH PROPOSALS.)		WELL API NO. 30-025-22133
1. Type of Well: Oil Well <input checked="" type="checkbox"/> Gas Well <input type="checkbox"/> Other <input type="checkbox"/>		5. Indicate Type of Lease STATE <input type="checkbox"/> FEE <input type="checkbox"/>
2. Name of Operator Lease Holders Acquisitions		6. State Oil & Gas Lease No.
3. Address of Operator 705 S Mustang rd #127, Yukon, OK 73099		7. Lease Name or Unit Agreement Name JP Collier
4. Well Location Unit Letter: G : 1980 feet from the N line and 2005 feet from the E line Section 10 Township 11S Range 33E NMPM County: Lea		8. Well Number #004Y
11. Elevation (Show whether DR, RKB, RT, GR, etc.)		9. OGRID Number 372076
		10. Pool name or Wildcat BAGLEY;PERMO PENN, NORTH

12. Check Appropriate Box to Indicate Nature of Notice, Report or Other Data

NOTICE OF INTENTION TO:		SUBSEQUENT REPORT OF:	
PERFORM REMEDIAL WORK <input type="checkbox"/>	PLUG AND ABANDON <input type="checkbox"/>	REMEDIAL WORK <input type="checkbox"/>	ALTERING CASING <input type="checkbox"/>
TEMPORARILY ABANDON <input type="checkbox"/>	CHANGE PLANS <input type="checkbox"/>	COMMENCE DRILLING OPNS. <input type="checkbox"/>	P AND A <input checked="" type="checkbox"/>
PULL OR ALTER CASING <input type="checkbox"/>	MULTIPLE COMPL <input type="checkbox"/>	CASING/CEMENT JOB <input type="checkbox"/>	
DOWNHOLE COMMINGLE <input type="checkbox"/>			
CLOSED-LOOP SYSTEM <input type="checkbox"/>			
OTHER: <input type="checkbox"/>		OTHER: <input type="checkbox"/>	

13. Describe proposed or completed operations. (Clearly state all pertinent details, and give pertinent dates, including estimated date of starting any proposed work). SEE RULE 19.15.7.14 NMAC. For Multiple Completions: Attach wellbore diagram of proposed completion or recompletion.

See Plugging Procedure/Events Below

Spud Date:

Rig Release Date:

I hereby certify that the information above is true and complete to the best of my knowledge and belief.

SIGNATURE:



TITLE: Authorized Representative

DATE: 12/19/2023

Type or print name: Ethan Wakefield

E-mail address: e.wakefield@dwsrigs.com

PHONE: 405-343-7736

For State Use Only

APPROVED BY: John Garcia

TITLE: Supervisor

DATE: 1/18/24

Conditions of Approval (if any):

Lease Holders Acquisitions

Plug And Abandonment End Of Well Report

JP Collier #004Y

1980' FNL & 2005' FEL, Section 10, 11S, 33E

Lea County, NM / API 30-025-22133

Work Summary:

- 11/26/23** Made BLM and NMOCD P&A operations notifications at 9:00 AM MST.
- 11/27/23** Arrived on location and held a safety meeting. Moved rig to JP Collier #004Y. Leveled out the location, dug the cellar, and spotted equipment. Rigged up and installed a new SRL on the derrick. Removed the horse's head and unset the rod pump. The pump was stuck, so we worked it up and down. Laid down 35 rods. Shut in and secured the well for the day.
- 11/28/23** Arrived on location and held a safety meeting. Checked well pressures. Laid down rods as follows: 105 1" rods, 104 7/8" rods, and 195 3/4" rods, for a total of 404 rods. Secured the well for the day.
- 11/29/23** Arrived on location and held a safety meeting. Checked well pressures. The wellhead flange was nipped down, the blowout preventer equipment (BOP) was stripped over, and a function test was conducted. The floor and equipment, including tongs and slips, were rigged up. The 2-7/8" tubing and work string were latched on to release the tubing anchor, which took up most of the day. The well was then secured for the day. Wireline services were set up for a free point.
- 11/30/23** Arrived on location and held a safety meeting. Checked well pressures (see notes below for details). R/U wireline services. Unable to RIH due to wireline equipment failure. R/D wireline for repair. Secured and shut in well. Crew changed out BOP hoses.

- Performed rig maintenance and inspection for the remainder of the day.
- 12/1/23** Arrived on location and held a safety meeting. Checked well pressures. R/U wireline services. RIH with jet cutters. Pumped 60 bbls of fresh water to fill 2-7/8" tubing. Cut 2-7/8" tubing at 8730'. POOH. R/D wireline. Worked tubing string. Slowly L/D 40 stands. Shut in and secured well.
- 12/2/23** Arrived on location and held a safety meeting. Checked well pressures. TOOH with 97 stands of 2-7/8" tubing. Waited on fishing tools. Shut in and secured well for the day. Serviced rig.
- 12/3/23** Arrived on location and held a safety meeting. Checked well pressures. P/U fishing tools (4.5" shoe, wash pipe top sub jar, 3-3/4" and 6 2-3/8" drill collars). TIH to 3823'. Shut down due to high winds. Secured and shut in well.
- 12/4/23** Arrived on location and held a safety meeting. Checked well pressures. TIH with fishing tools and tagged damaged casing at 7237'. P/U power swivel. Pumped 70 bbls of fresh water. Attempted to work wash pipe but was unable to get down. R/D swivel. Pull back 2 stands. TOOH. Waiting on mill. Shut in and secured well.
- 12/5/23** Arrived on location and held a safety meeting. Checked well pressures. P/U mill. TIH and tagged at 7236'. R/U power swivel and pump. Milled on damaged casing from 7236' to 7238'. Never established circulation. Pumped 270 bbls. Mill was torquing up and would drag when pulling up. R/D power swivel and pump. TOOH with 10 stands. Drained equipment. Shut in and secured well.
- 12/6/23** Arrived on location and held a safety meeting. Checked well pressures. TIH and tagged at 7237'. TOOH. L/D drill Collars. P/U 5.5" packer. TIH and set packer at 7200'. R/U cementers. Successfully established an injection rate. Pumped 80 bbls total. R/D cementers. Unset packer and TOOH to 2520'. Shut in well and drained equipment.
- 12/7/23** Arrived on location and held a safety meeting. Checked well pressures. Continued to TOOH. L/D packer. P/U 5.5" CR. TIH and set CR at 7200'. R/U cementers. Pumped plug #1 through CR. R/D cementers. Stung out of CR. R/U cementers. Successfully circulated hole with 160 bbls. Pumped 170 total. Attempted to pressure test casing but was unsuccessful. R/D cementers. TOOH. R/U wireline. Wireline truck experienced issues. Shut in and secured well for the day.

- 12/8/23** Arrived on location and held a safety meeting. Checked well pressures. Pumped 18 bbls of water to fill the casing. R/U wireline services. RIH and logged well. POOH. TIH to 7200'. R/U cementing services. Pumped plug #2 from 7200' to 6954'. R/D cementers. L/D 8 joints and TOOH. WOC overnight. Shut in and secured well.
- 12/9/23** Arrived on location and held a safety meeting. Checked well pressures. TIH and tagged plug #2 at 6920'. R/U cementing services. Attempted to pressure test casing but was unsuccessful. Pumped mud/gel spacer from 6920' to 6589'. R/D cementers. L/D 8 joints and TOOH. R/U wireline services. RIH and perforated at 6589'. Attempted to TIH but had to shut down due to high winds. Shut in and secured well.
- 12/10/23** Arrived on location and held a safety meeting. Checked well pressures. P/U 5.5" packer. TIH and set packer at 6225' with end of tubing at 6320'. Attempted to establish an injection rate but was unable to. Pumped 2 bbls and tubing pressured up. Unset packer and TOOH. Attempted to TIH but high winds forced shutdown. Shut in and secured well.
- 12/11/23** Arrived on location and held a safety meeting. Checked well pressures. TIH to 6637'. R/U cementing services. Pumped Plug #3 from 6637' to 6371'. R/D cementers. L/D 9 joints and TOOH. WOC 6 hours. TIH and tagged plug #3 at 6380'. R/U cementing services. Pumped mud/gel spacer from 6380' to 5187'. R/D cementers. L/D 38 joints and TOOH to 1360'. Shut in and secured well.
- 12/12/23** Arrived on location and held a safety meeting. Checked well pressures. Finished TOOH. R/U wireline services. RIH and perforated at 5187'. POOH. R/D wireline. R/U cementers. Attempted to establish an injection rate. Pumped 19 bbls and casing pressured up but did slowly drop. TIH to 5245'. R/U cementing services. Pumped plug #4 from 5245' to 4972'. R/D cementers. L/D 7 joints and TOOH. WOC 4 hours. TIH and tagged TOC at 5104'. R/U cementing services. continued pumping plug #4 from 5104' to 4972'. R/D cementers. L/D 4 joints and TOOH. Shut in and secured well. NOTE: casing was successfully pressure tested to 500 psi on 12/11/23.
- 12/13/23** Arrived on location and held a safety meeting. Checked well pressures. TIH and tagged plug #4 at 4890'. R/U cementing services. Pumped weighted spacer from 4890' to 3873'. R/D cementers. L/D 32 joints and TOOH. R/U wireline services. RIH and perforated at 3873'. POOH. R/U cementing services. Attempted to establish and injection rate but casing pressured up, pressure did slowly drop. R/D cementers. TIH to 3927'. R/U cementing services. Pumped plug #5

from 3927' to 3637'. R/D cementers. L/D 10 joints and TOOH. WOC overnight. Shut in and secured well.

12/14/23 Arrived on location and held a safety meeting. Checked well pressures. TIH and tagged plug #5 at 3604'. R/U cementing services. Pumped mud/gel spacer from 3604' to 2520'. R/D cementers. L/D 32 joints and TOOH. R/U wireline services. RIH and perforated at 2520'. POOH. R/U cementing services. Successfully established an injection rate. P/U 5.5" packer. TIH and set at 2252' with end of tubing at 2346'. R/U cementing services. Pumped plug #6 from 2520' to 2370'. R/D cementers. Unset packer and TOOH. WOC overnight. Shut in and secured well.

12/15/23 Arrived on location and held a safety meeting. Checked well pressures. TIH and tagged plug #6 at 2252'. R/U cementing services. Pumped mud/gel spacer from 2252' to 413'. R/D cementers. L/D tubing. R/U wireline services. RIH and perforated at 413'. POOH. R/D wireline. R/U cementers. Successfully circulated water down 5.5" casing, into perforations, and out BH valve at surface. Established circulation with 10 bbls, pumped 12 bbls total. Pumped plug #7 down 5.5" casing, into perforations, and out BH valve at surface. R/D floor, ND BOP, NU WH. R/D unit and equipment. Moved Equipment to the Alves A #001.

12/16/23 Arrived on location and held safety meeting. Used backhoe to safely expose wellhead. Set up welding unit on location. Performed wellhead cutoff. Removed old wellhead. Cement was 60' low in 5.5" casing and 70' low in 8.6" casing, and 6' low in 13.9" casing. R/U cementers and topped off casing strings. Welder attached marker per NMOCD regulations.

Plug Summary:

Plug #1: (≈8,196 – 7,200', 113 Sacks Class H Cement)

P/U 5.5" CR. TIH and set CR at 7200'. R/U cementers. Pumped plug #1 through CR. R/D cementers. Stung out of CR.

Plug #2: (Abo Formation Top, 7,200'-6,920', 25 Sacks Class H Cement)

R/U cementing services. Pumped plug #2 from 7200' to 6954'. R/D cementers. L/D 8 joints and TOOH. WOC overnight. TIH and tagged plug #2 at 6920'.

Plug #3: (Tubb Formation Top, 6,637'-6,380', 30 Sacks Class H Cement)

R/U wireline services. RIH and perforated at 6589'. P/U 5.5" packer. TIH and set packer at 6225' with end of tubing at 6320'. Attempted to establish an injection rate but was unable to. Pumped 2 bbls and tubing pressured up. Unset packer and TOOH. TIH to 6637'. R/U cementing services. Pumped Plug #3 from 6637' to 6371'. R/D cementers. L/D 9 joints and TOOH. WOC 6 hours. TIH and tagged plug #3 at 6380'.

Plug #4: (Glorieta Formation Tops, 5,245'-4,890', 31 Sacks Class H Cement 15 Sacks Type I/II cement)

R/U wireline services. RIH and perforated at 5187'. POOH. R/D wireline. R/U cementers. Attempted to establish an injection rate. Pumped 19 bbls and casing pressured up but did slowly drop. TIH to 5245'. R/U cementing services. Pumped plug #4 from 5245' to 4972'. R/D cementers. L/D 7 joints and TOOH. WOC 4 hours. TIH and tagged TOC at 5104'. R/U cementing services. continued pumping plug #4 from 5104' to 4972'. R/D cementers. WOC. TIH and tagged plug #4 at 4890'.

Plug #5: (Intermediate Casing Shoe and San Andres Formation Top, 3,927'-3,604', 32 Sacks Type I/II Cement)

R/U wireline services. RIH and perforated at 3873'. POOH. R/U cementing services. Attempted to establish an injection rate but casing pressured up, pressure did slowly drop. R/D cementers. TIH to 3927'. R/U cementing services. Pumped plug #5 from 3927' to 3637'. R/D cementers. L/D 10 joints and TOOH. WOC overnight. TIH and tagged plug #5 at 3604'.

Plug #6: (Yates Formation Top, 2,520'-2,252', 49 Sacks Type I/II Cement)

R/U wireline services. RIH and perforated at 2520'. POOH. R/U cementing services. Successfully established an injection rate. P/U 5.5" packer. TIH and set at 2252' with end of tubing at 2346'. R/U cementing services. Pumped plug #6 from 2520' to 2370'. R/D cementers. Unset packer and TOOH. WOC overnight. TIH and tagged plug #6 at 2252'.

Plug #7: (Surface Casing Shoe, 413'-Surface', 221 Sacks Type I/II Cement (40 sx for top off))

R/U wireline services. RIH and perforated at 413'. POOH. R/D wireline. R/U cementers. Successfully circulated water down 5.5" casing, into perforations, and out BH valve at surface. Established circulation with 10 bbls, pumped 12 bbls total. Pumped plug #7 down 5.5" casing, into perforations, and out BH valve at surface. Performed wellhead cutoff. Removed old wellhead. Cement was 60' low in 5.5" casing and 70' low in 8.6" casing, and 6' low in 13.9" casing. R/U cementers and topped off casing strings. Welder attached marker per NMOCD regulations.

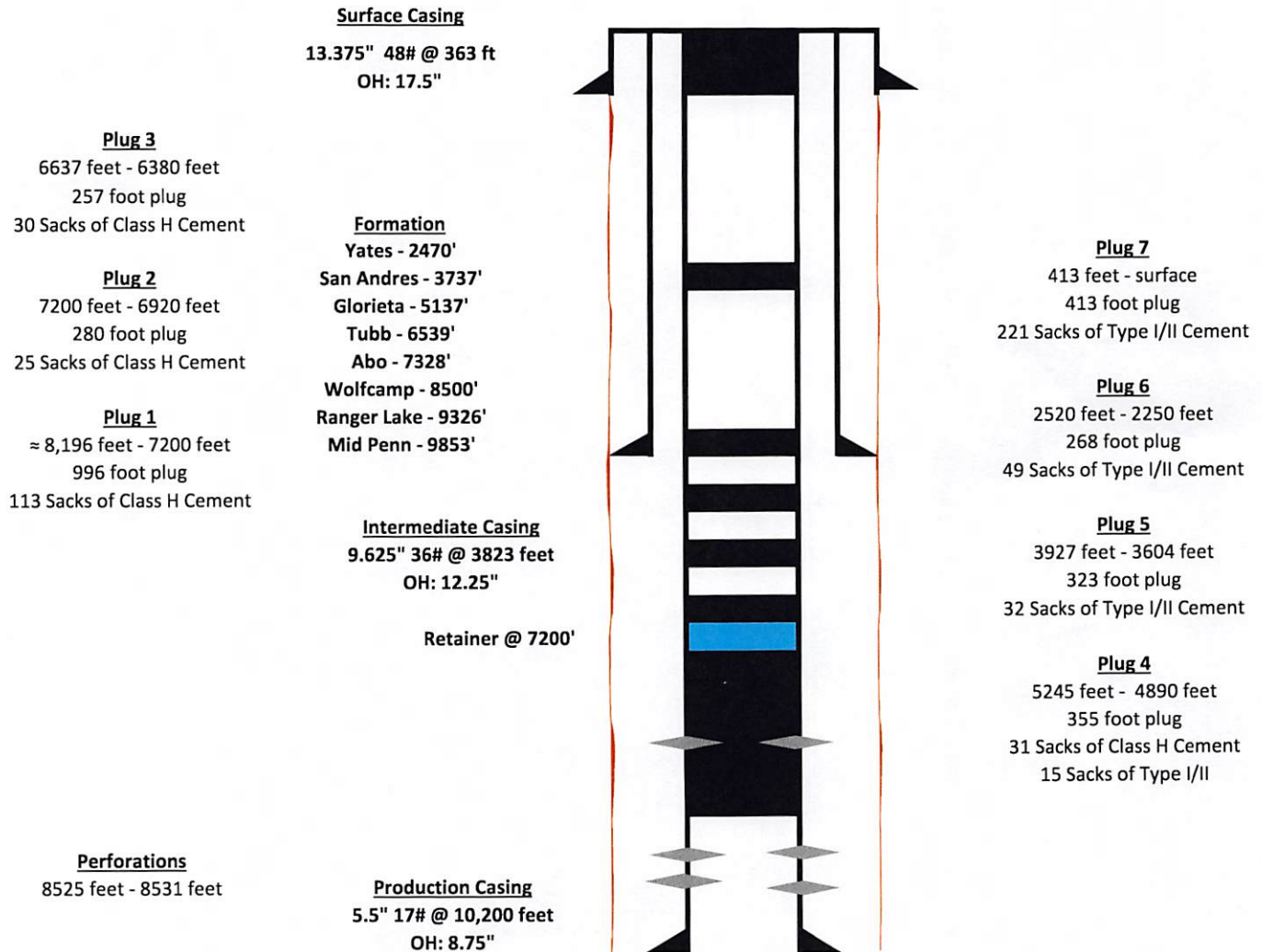
Completed Wellbore Diagram

LEASE HOLDERS ACQUISITIONS

JP Collier #004Y

API: 30-025-22133

Lea County, New Mexico













District I
1625 N. French Dr., Hobbs, NM 88240
Phone:(575) 393-6161 Fax:(575) 393-0720
District II
811 S. First St., Artesia, NM 88210
Phone:(575) 748-1283 Fax:(575) 748-9720
District III
1000 Rio Brazos Rd., Aztec, NM 87410
Phone:(505) 334-6178 Fax:(505) 334-6170
District IV
1220 S. St Francis Dr., Santa Fe, NM 87505
Phone:(505) 476-3470 Fax:(505) 476-3462

State of New Mexico
Energy, Minerals and Natural Resources
Oil Conservation Division
1220 S. St Francis Dr.
Santa Fe, NM 87505

CONDITIONS

Action 298165

CONDITIONS

Operator: LEASE HOLDERS ACQUISITIONS, INCORPORATED 705 S Mustang Rd #127 Yukon, OK 73099	OGRID: 372878
	Action Number: 298165
	Action Type: [C-103] Sub. Plugging (C-103P)

CONDITIONS

Created By	Condition	Condition Date
jagarcia	None	1/18/2024