

Submit 1 Copy To Appropriate District Office
 District I – (575) 393-6161
 1625 N. French Dr., Hobbs, NM 88240
 District II – (575) 748-1283
 811 S. First St., Artesia, NM 88210
 District III – (505) 334-6178
 1000 Rio Brazos Rd., Aztec, NM 87410
 District IV – (505) 476-3460
 1220 S. St. Francis Dr., Santa Fe, NM 87505

State of New Mexico
 Energy, Minerals and Natural Resources

Form C-103
 Revised July 18, 2013

OIL CONSERVATION DIVISION
 1220 South St. Francis Dr.
 Santa Fe, NM 87505

WELL API NO.
 30-025-36383

5. Indicate Type of Lease
 STATE ☒ FEE ☐

6. State Oil & Gas Lease No.

7. Lease Name or Unit Agreement Name
 Alves

8. Well Number: 004

9. OGRID Number: 373817

10. Pool name or Wildcat
 PENROSE SKELLY;GRAYBURG

SUNDRY NOTICES AND REPORTS ON WELLS

(DO NOT USE THIS FORM FOR PROPOSALS TO DRILL OR TO DEEPEN OR PLUG BACK TO A DIFFERENT RESERVOIR. USE "APPLICATION FOR PERMIT" (FORM C-101) FOR SUCH PROPOSALS.)

1. Type of Well: Oil Well ☒ Gas Well ☐ Other ☐

2. Name of Operator

Energy Acumen LLC

3. Address of Operator

10103 Gutierrez Rd NE, Albuquerque, NM 87111

4. Well Location

Unit Letter: H : 1800 feet from the N line and 660 feet from the E line

Section 18 Township 21S Range 37E NMPM County: Eddy

11. Elevation (Show whether DR, RKB, RT, GR, etc.)

12. Check Appropriate Box to Indicate Nature of Notice, Report or Other Data

NOTICE OF INTENTION TO:

PERFORM REMEDIAL WORK ☐ PLUG AND ABANDON ☐

TEMPORARILY ABANDON ☐ CHANGE PLANS ☐

PULL OR ALTER CASING ☐ MULTIPLE COMPL ☐

DOWNHOLE COMMINGLE ☐

CLOSED-LOOP SYSTEM ☐

OTHER: ☐

SUBSEQUENT REPORT OF:

REMEDIAL WORK ☐ ALTERING CASING ☐

COMMENCE DRILLING OPNS. ☐ P AND A ☒

CASING/CEMENT JOB ☐

OTHER: ☐

13. Describe proposed or completed operations. (Clearly state all pertinent details, and give pertinent dates, including estimated date of starting any proposed work). SEE RULE 19.15.7.14 NMAC. For Multiple Completions: Attach wellbore diagram of proposed completion or recompletion.

See Plugging Procedure/Events Below

Spud Date:

Rig Release Date:

I hereby certify that the information above is true and complete to the best of my knowledge and belief.

SIGNATURE Ethan Wakefield TITLE: Authorized Representative DATE: 12/21/23

Type or print name: Ethan Wakefield E-mail address: e.wakefield@dwsrigs.com PHONE: (405)343-7736

For State Use Only

APPROVED BY: John Garcia TITLE Supervisor DATE 1/18/24

Conditions of Approval (if any):

Energy Acumen LLC

Plug And Abandonment End Of Well Report

Alves #004

1800' FNL & 660' FEL, Section 18, 21S, 37E

Lea County, NM / API 30-025-36383

Work Summary:

- 12/10/23** Made BLM and NMOCD P&A operations notifications at 9:00 AM MST.
- 12/11/23** Held safety meeting. Moved rig and equipment to location. Prepared location, spotted equipment, and rigged up. Checked well pressures. Well had 125 PPM H₂S. Bleed gas and pressure to tank at location. Pulled 147 ¾" rods. Shut down and secured well.
- 12/12/23** Arrived on location and held safety meeting. Checked well pressures. Pumped 40 bbls of fresh water down 2-3/8" tubing. ND WH, NU BOP. Function test BOP. R/U floor and equipment. TOOH with 106 joints. P/U 5.5" scraper. TIH to 3740'. TOOH. Shut in and secured well.
- 12/13/23** Arrived on location and held safety meeting. Checked well pressures. P/U 5.5" CR. TIH and set CR at 3696'. Successfully pressure tested tubing to 800 psi. Sting out of CR. Successfully established circulation with 70 bbls, pumped 120 total. Attempted to pressure test casing but casing would not hold pressure. TOOH. R/U wireline services. RIH and logged well. POOH. Had to pump 41 bbls to fill the hole to log, pumped 66 bbls to keep the hole filled while logging. TIH to 3290'. Shut in and secured well for the day.
- 12/14/23** Arrived on location and held safety meeting. Checked well pressures. TIH to 3696'. R/U cementing services. Pump 45 bbls of water. Pumped plug #1 from 3696' to 3106'. R/D cementers. L/D 19 joints. TOOH. WOC 4 hours. TIH with 35 joints and tagged plug #1 at 3120'. R/U cementing services. Pumped mud/gel spacer from 3120' to 2915'. R/D cementers. L/D 8 joints. R/U cementing services.

Pumped plug #2 from 2928' to 2695'. R/D cementers. L/D 7 joints and TOOH. Shut in and secured well. WOC overnight.

12/15/23 Arrived on location and held safety meeting. Checked well pressures. TIH and tagged plug #2 at 2660'. R/U cementing services. Successfully pressure tested casing to 800 psi. Pumped mud/gel spacer from 2660' to 1407'. R/D cementers. L/D 47 joints and TOOH. R/U wireline services. RIH and perforated at 1407'. POOH. R/D wireline services. TIH with a 5.5" packer. Set packer at 1083'. Successfully established an injection rate. TOOH with packer. L/D packer. TIH to 1460'. R/U cementing services. Pumped plug #3 from 1460' to 1200'. L/D 8 joints and TOOH. WOC 4 hours. TIH and tagged plug #3 at 1167'. R/U cementing services. Pumped mud/gel spacer from 1167' to 100'. R/D cementers. L/D 36 joints. R/U wireline services. RIH and perforated at 100'. POOH. R/D wireline. R/U cementing services. Attempted to circulate through perforations with 30 bbls but was unable to establish circulation. Pumped plug #4 from 100' to surface. Shut in and secured well.

12/16/23 Arrived on location and held safety meeting. Checked well pressures. R/U cementing services. Pressure tested BH, pumped 4 bbls at 1.5 bbl/min at 100 psi. Attempted to circulate through the perforations at 100'. Was unable to circulate. R/U wireline services. RIH and perforated at 90'. POOH. R/U cementing services. Attempted to circulate well but was unable to. R/U wireline services. RIH and logged well from 100' to surface. R/D wireline services. R/U cementing services. Continued pumping plug #4 from 100' to 50'. R/D cementers. TOOH. R/U wireline services. RIH and perforated at 45'. Mixed at 10 bbl mud pill. Pumped mud through perforation, circulated out of BH. Continued pumping plug #4 from surface, into perforations, and out BH valve at surface. N/D BOP. Begin R/D equipment. Prepare to MOL.

12/20/23 Arrived on location and held safety meeting. Used backhoe to safely expose wellhead. Set up welding unit on location. Performed wellhead cutoff. Removed old wellhead. Cement was to surface in both casing strings. Welder attached marker per NMOCD regulations.

Plug Summary:

Plug #1: (Perforations, Grayburg, Queen, B. Bowers, and T. Bowers Formations Tops, 3,696'-3,120', 67 Sacks Type I/II Cement)

P/U 5.5" CR. TIH and set CR at 3696'. Successfully pressure tested tubing to 800 psi. Sting out of CR. Successfully established circulation with 70 bbls, pumped 120 total. Attempted to pressure

test casing but casing would not hold pressure. TOOH. R/U wireline services. RIH and logged well. POOH. Had to pump 41 bbls to fill the hole to log, pumped 66 bbls to keep the hole filled while logging. TIH to 3290'. TIH to 3696'. R/U cementing services. Pump 45 bbls of water. Pumped plug #1 from 3696' to 3106'. R/D cementers. L/D 19 joints. TOOH. WOC 4 hours. TIH with 35 joints and tagged plug #1 at 3120'.

Plug #2: (7 Rivers Formation Top, 2,928'-2,660', 26 Sacks Type I/II Cement)

R/U cementing services. Pumped plug #2 from 2928' to 2695'. R/D cementers. L/D 7 joints and TOOH. Shut in and secured well. WOC overnight. TIH and tagged plug #2 at 2660'.

Plug #3: (Surface Casing Shoe, 1,460'-1,167', 30 Sacks Type I/II Cement)

R/U wireline services. RIH and perforated at 1407'. POOH. R/D wireline services. TIH with a 5.5" packer. Set packer at 1083'. Successfully established an injection rate. TOOH with packer. L/D packer. TIH to 1460'. R/U cementing services. Pumped plug #3 from 1460' to 1200'. L/D 8 joints and TOOH. WOC 4 hours. TIH and tagged plug #3 at 1167'.

Plug #4: (Surface, 100'-Surface, 62 Sacks Type I/II Cement (0 sx for top off))

R/U wireline services. RIH and perforated at 100'. POOH. R/D wireline. R/U cementing services. Attempted to circulate through perforations with 30 bbls but was unable to establish circulation. Pumped plug #4 from 100' to surface. WOC. R/U cementing services. Pressure tested BH, pumped 4 bbls at 1.5 bbl/min at 100 psi. Attempted to circulate through the perforations at 100'. Was unable to circulate. R/U wireline services. RIH and perforated at 90'. POOH. R/U cementing services. Attempted to circulate well but was unable to. R/U wireline services. RIH and logged well from 100' to surface. R/D wireline services. R/U cementing services. Continued pumping plug #4 from 100' to 50'. R/D cementers. TOOH. R/U wireline services. RIH and perforated at 45'. Mixed at 10 bbl mud pill. Pumped mud through perforation, circulated out of BH. Continued pumping plug #4 from surface, into perforations, and out BH valve at surface. Performed wellhead cutoff. Removed old wellhead. Cement

was to surface in both casing strings. Welder attached marker per NMOCD regulations.

Completed Wellbore Diagram

Energy Acuman LLC
Alves #004
API: 30-025-36383
Lea, New Mexico

Plug 4

100 feet - Surface
100 foot plug
62 Sacks of Type I/II Cement

Plug 3

1460 feet - 1167 feet
293 foot plug
30 Sacks of Type I/II Cement

Plug 2

2928 feet - 2660 feet
268 foot plug
26 Sacks of Type I/II Cement

Plug 1

3696 feet - 3120 feet
576 foot plug
67 sacks of Type I/II Cement

Surface Casing

8.625" 24# @ 1357'
OH: 12.25"

Formation

7 Rivers - 2865 feet
T. Bowers - 3206 feet
B. Bowers - 3288 feet
Queen - 3392 feet
Grayburg - 3653 feet

CR @ 3696'

Perforations

3746 feet - 3756 feet

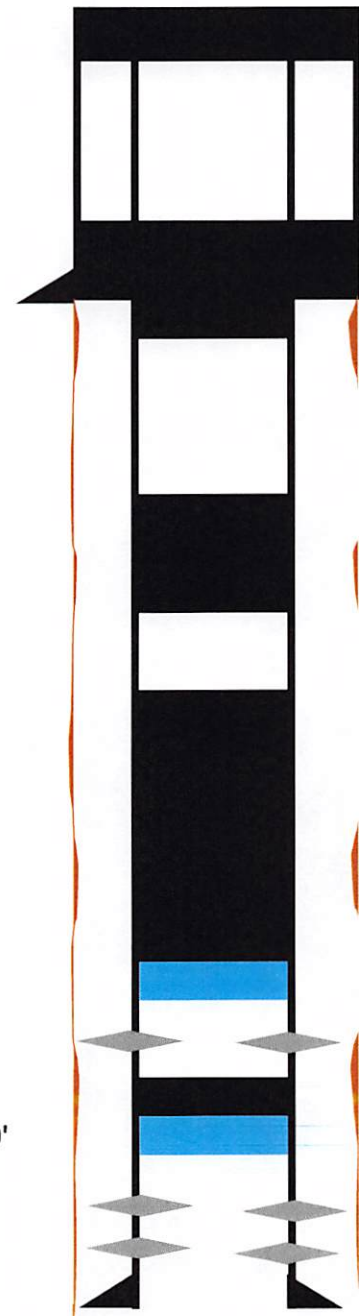
Perforations

4051 feet - 4075 feet

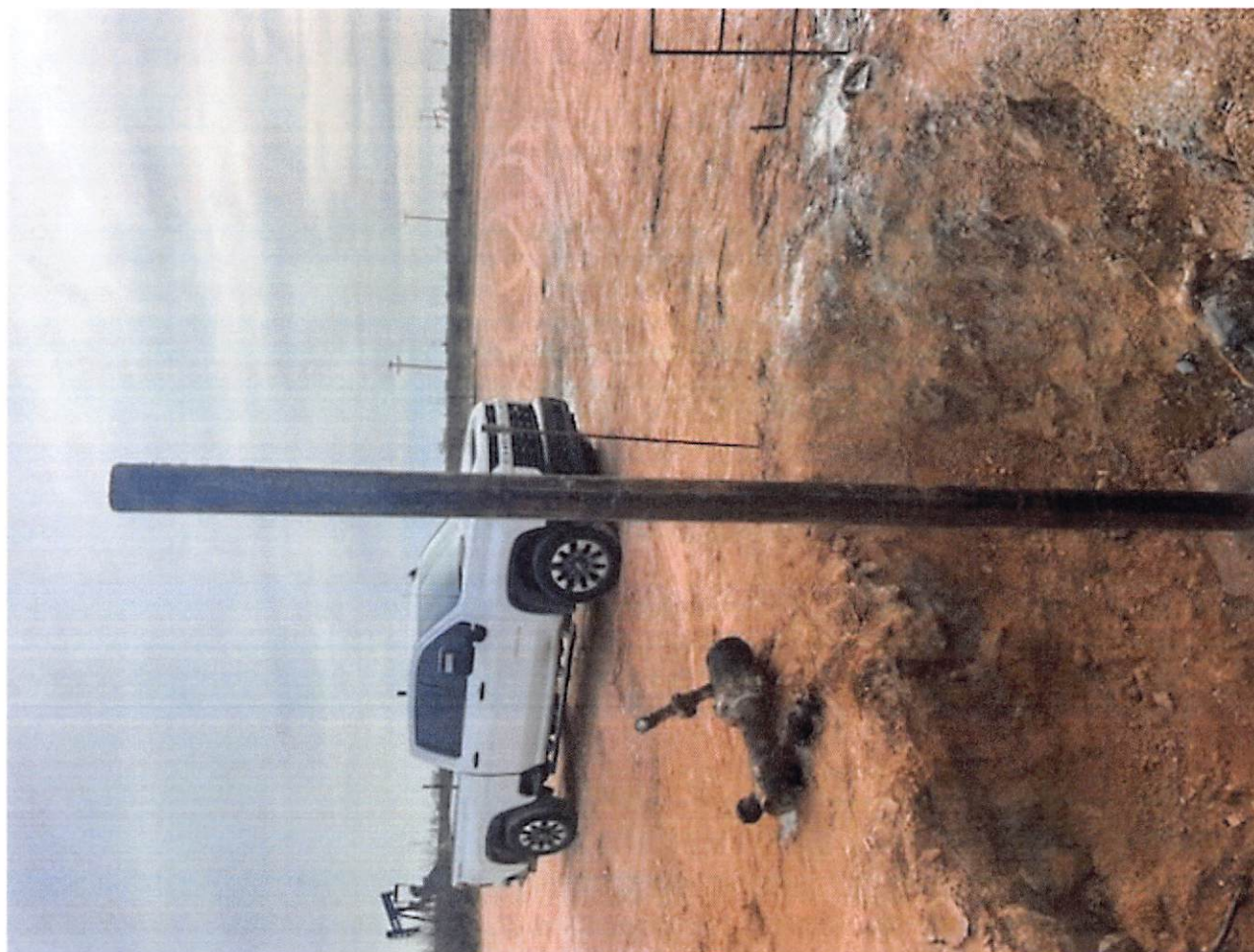
Existing CR 3990', Cement to 3970'

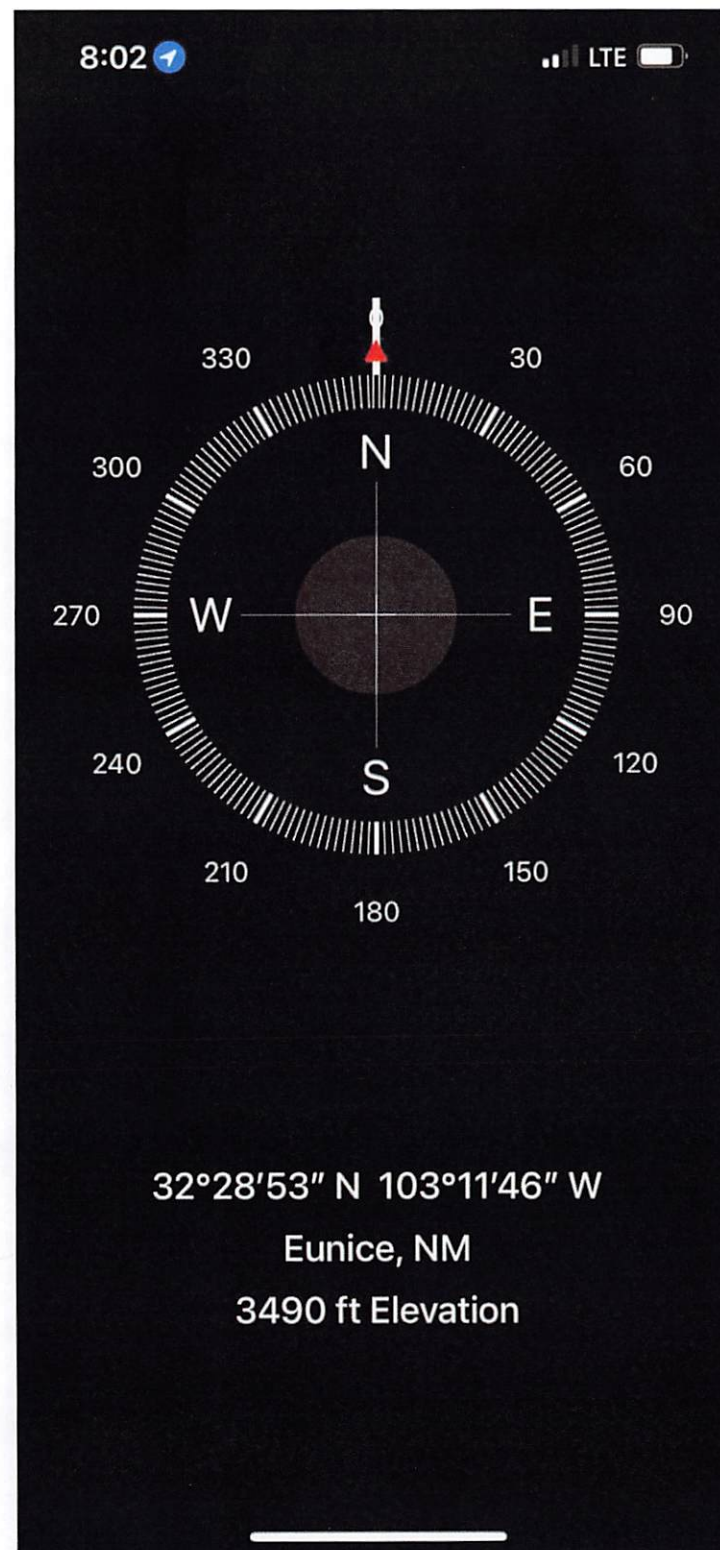
Production Casing

5.5" 15.5# @ 4300'
OH: 7.875"











District I
1625 N. French Dr., Hobbs, NM 88240
Phone:(575) 393-6161 Fax:(575) 393-0720

District II
811 S. First St., Artesia, NM 88210
Phone:(575) 748-1283 Fax:(575) 748-9720

District III
1000 Rio Brazos Rd., Aztec, NM 87410
Phone:(505) 334-6178 Fax:(505) 334-6170

District IV
1220 S. St Francis Dr., Santa Fe, NM 87505
Phone:(505) 476-3470 Fax:(505) 476-3462

State of New Mexico
Energy, Minerals and Natural Resources
Oil Conservation Division
1220 S. St Francis Dr.
Santa Fe, NM 87505

CONDITIONS

Action 298730

CONDITIONS

Operator: ROBINSON OIL INC P.O. Box 1829 Eunice, NM 88231	OGRID: 37636
	Action Number: 298730
	Action Type: [C-103] Sub. Plugging (C-103P)

CONDITIONS

Created By	Condition	Condition Date
jagarcia	None	1/18/2024