

Well Name: BURCH KEELY UNIT	Well Location: T17S / R29E / SEC 24 / SESW /	County or Parish/State: EDDY / NM
Well Number: 344	Type of Well: OIL WELL	Allottee or Tribe Name:
Lease Number: NMLC028784B	Unit or CA Name: BURCH KEELY UNIT	Unit or CA Number: NMNM88525X
US Well Number: 3001532712	Well Status: Abandoned	Operator: SPUR ENERGY PARTNERS LLC

Accepted for record –NMOCD gc2/9/2024

Subsequent Report

Sundry ID: 2709146

Type of Submission: Subsequent Report	Type of Action: Plug and Abandonment
Date Sundry Submitted: 01/03/2023	Time Sundry Submitted: 08:12
Date Operation Actually Began: 10/25/2022	

Actual Procedure: 10/25/22: MIRU then change equipment to pull rods & remove polish rod, POOH w/ rods & bleed pressure on csg then change equipment to pull tbg, well is gassing strong then RU pump & pump 25bbls water on backside, ND WH cap & PU on tbg then remove slips, put on flange then NU Bop & RU floor, check free point – pipe moving from 3500’ then SDFN. 10/26/22: Check well pressure – csg 80psi & bleed down, RU WL then RIH & cut tbg @ 2000’, POOH & RD WL then POOH w/ tbg, RBIH w/ pkr – set at 1830’ then check injection rate, PLUG #1 – mix & pump 200sxs Class C cement squeeze from 4100’ leaving toc at 2000’ then displ w/ 14.5bbls mud, SDFN. 10/27/22: Check well – tbg on vac then RU pump & pumped 25bbls brine but still on strong vac, notify BLM & they suggested to set a CIBP at 2000’ then spot 25sxs on top, release pkr & POOH, RU WL then RIH to set CIBP at 2000’ & SDFN due to pump. 10/28/22: RU pump then circulate well w/ 47bbls mud & test csg – plug held 500psi for 30min, PLUG #2 – mix & pump 25sxs Class C cement from 2000’ leaving toc at 1748’ then displ w/ 10.1bbls mud, POOH w/ all tbg & SDFN. 10/31/22: RIH w/ tbg to tag PLUG #2 at 1713’ & POOH, RU WL then RIH to perforate at 410’ & RD WL, RBIH w/ pkr to get injection rate – pressure up to 500psi & bleed down slow, notify BLM & they suggested to perforate 50’ above at 360’ then POOH w/ pkr, RU WL then RIH to perforate at 360’ & RD WL, RIH w/ pkr to check injection rate – pressure up to 500psi then bleed slowly & stay on 100psi, notify BLM & they suggested to drop 50’ to spot plug, PLUG #3 – mix & pump 21sxs Class C cement from 460’ leaving toc at 248’ then displ w/ 1.4bbls mud, POOH & SDFN. 11/01/22: RIH & tag PLUG #3 at 248’ then POOH, RU WL then RIH to perforate at 100’ & RD WL, RIH to check injection rate – pressured up to 500psi then notify BLM & they suggest to drop 50’ below perf to spot plug to surface, PLUG #4 – mix & pump 16sxs Class C cement from eot at 160’ to surface, RD floor then ND Bop & RDMO.

Received by OCD: 12/18/2023 8:50:59 AM

Page 2 of 4

Well Name: BURCH KEELY UNIT	Well Location: T17S / R29E / SEC 24 / SESW /	County or Parish/State: EDDY / NM
Well Number: 344	Type of Well: OIL WELL	Allottee or Tribe Name:
Lease Number: NMLC028784B	Unit or CA Name: BURCH KEELY UNIT	Unit or CA Number: NMNM88525X
US Well Number: 3001532712	Well Status: Abandoned	Operator: SPUR ENERGY PARTNERS LLC

SR Attachments

Actual Procedure

Burch_Keely_Unit__344_Plugged_WBD_20230103081237.pdf

Operator

I certify that the foregoing is true and correct. Title 18 U.S.C. Section 1001 and Title 43 U.S.C. Section 1212, make it a crime for any person knowingly and willfully to make to any department or agency of the United States any false, fictitious or fraudulent statements or representations as to any matter within its jurisdiction. Electronic submission of Sundry Notices through this system satisfies regulations requiring a

Operator Electronic Signature: SARAH CHAPMAN

Signed on: JAN 03, 2023 08:12 AM

Name: SPUR ENERGY PARTNERS LLC

Title: Regulatory Directory

Street Address: 9655 KATY FREEWAY, SUITE 500

City: Houston

State: TX

Phone: (832) 930-8613

Email address: SCHAPMAN@SPUREPLLC.COM

Field

Representative Name:

Street Address:

City:

State:

Zip:

Phone:

Email address:

BLM Point of Contact

BLM POC Name: JAMES A AMOS

BLM POC Title: Acting Assistant Field Manager

BLM POC Phone: 5752345927

BLM POC Email Address: jamos@blm.gov

Disposition: Accepted

Disposition Date: 01/05/2023

Signature: James A. Amos

Burch Keely Unit #344Eddy County, NM
API# 30-015-32712

CURRENT WBD

SPUD DATE: 7/29/2003

Perforations at
100'Plug #4 - 1/2sxs Class C
1100' - Surface

Perforations at 410' + 360'

8-5/8" 24# CSG @ 350'
CMT W/ 300 SXPlug #2 - 2 1/2sxs
Class C

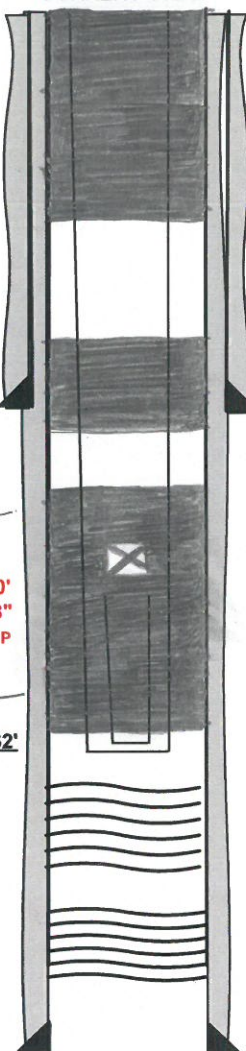
2000' - 1713'

TOP OF FISH @ ~2,050'
ASSUMED ~2,000' OF 7/8"
RODS & ROD INSERT PUMP
REMAINING IN HOLEPlug #1 - 200sxs
Class C

4100' - 2000'

2-7/8" TBG @ 4,162'5-1/2" 17# CSG @ 4,759'
CMT W/ 1,250 SXPlug #3 - 2 1/2sxs Class C
460' - 248'12/8/2021 Attempted to unseat pump, and unset TAC.
No success. Treated for paraffin and scale. Performed
manual back off and POOH with 93 7/8" rods.
(TOF @ 2,325')CIBPat
2000'12/9 - 12/13/2021 Continued fishing. Ultimately, run in
hole with 93 rods. Latched onto fish and pulled up to
40K. Hot watered the well. Attempted to use tongs and
shear the pump pull rod, no success. POOH with only
82 rods (10 additional rods lost downhole)

TOF ~ 2,050

PERFS: 4,180' - 4,525'
ACIDIZE W 2,000 GALS 15% HCL ACID

District I
1625 N. French Dr., Hobbs, NM 88240
Phone:(575) 393-6161 Fax:(575) 393-0720
District II
811 S. First St., Artesia, NM 88210
Phone:(575) 748-1283 Fax:(575) 748-9720
District III
1000 Rio Brazos Rd., Aztec, NM 87410
Phone:(505) 334-6178 Fax:(505) 334-6170
District IV
1220 S. St Francis Dr., Santa Fe, NM 87505
Phone:(505) 476-3470 Fax:(505) 476-3462

State of New Mexico
Energy, Minerals and Natural Resources
Oil Conservation Division
1220 S. St Francis Dr.
Santa Fe, NM 87505

CONDITIONS

Action 295505

CONDITIONS

Operator: Spur Energy Partners LLC 9655 Katy Freeway Houston, TX 77024	OGRID: 328947
	Action Number: 295505
	Action Type: [C-103] Sub. Plugging (C-103P)

CONDITIONS

Created By	Condition	Condition Date
gcordero	None	2/9/2024