

Submit to: 2/6/2024 3:52:16 PM
Office
District I - (575) 393-6161
1625 N. French Dr., Hobbs, NM 88240
District II - (575) 748-1283
811 S. First St., Artesia, NM 88210
District III - (505) 334-6178
1000 Rio Brazos Rd., Aztec, NM 87410
District IV - (505) 476-3460
1220 S. St. Francis Dr., Santa Fe, NM
87505

State of New Mexico
Energy, Minerals and Natural Resources

Revised July 18, 2013

OIL CONSERVATION DIVISION
1220 South St. Francis Dr.
Santa Fe, NM 87505

WELL API NO.

30-025-11318

5. Indicate Type of Lease

STATE ☐ FEE ☒

6. State Oil & Gas Lease No.

B-1506

7. Lease Name or Unit Agreement Name

JALMAT STATE GAS COM8. Well Number **#003**9. OGRID Number **873**

10. Pool name or Wildcat

JALMAT-TANSILL-YATES-7 RVRS

SUNDRY NOTICES AND REPORTS ON WELLS

(DO NOT USE THIS FORM FOR PROPOSALS TO DRILL OR TO DEEPEN OR PLUG BACK TO A DIFFERENT RESERVOIR. USE "APPLICATION FOR PERMIT" (FORM C-101) FOR SUCH PROPOSALS.)

1. Type of Well: Oil Well ☐ ☒ Gas Well ☐ Other

2. Name of Operator

APACHE CORPORATION

3. Address of Operator

303 VETERANS AIRPARK LANE, STE. 3000, MIDLAND TX 79705

4. Well Location

Unit Letter **O** : **330** feet from the **S** line and **2310** feet from the **E** lineSection **32** Township **24S** Range **37E** NMPM County **LEA**

11. Elevation (Show whether DR, RKB, RT, GR, etc.)

3255' GR

12. Check Appropriate Box to Indicate Nature of Notice, Report or Other Data

NOTICE OF INTENTION TO:

PERFORM REMEDIAL WORK ☐ **PLUG AND ABANDON** ☐TEMPORARILY ABANDON ☐ CHANGE PLANS ☐PULL OR ALTER CASING ☐ MULTIPLE COMPL ☐DOWNHOLE COMMINGLE ☐CLOSED-LOOP SYSTEM ☐OTHER: ☐

SUBSEQUENT REPORT OF:

REMEDIAL WORK ☐ ALTERING CASING ☐COMMENCE DRILLING OPNS. ☐ **P AND A** ☒CASING/CEMENT JOB ☐OTHER: ☐

13. Describe proposed or completed operations. (Clearly state all pertinent details, and give pertinent dates, including estimated date of starting any proposed work). SEE RULE 19.15.7.14 NMAC. For Multiple Completions: Attach wellbore diagram of proposed completion or recompletion.

1/17/24 - NOTIFIED NMOCD. MIRU.

1/20/24 - CIRCULATE MLF. PUMPED 65 SX CLASS "C" CEMENT FROM 3085' - 2700'.

1/22/24 - TAGGED @ 2783'. PERF @ 2500'. PUMPED 70 SX CLASS "C" CEMENT FROM 3500' - 2300'.

1/23/24 - TAGGED @ 2364'. PERF @ 1290'. PUMPED 80 SX CLASS "C" CEMENT FROM 1290' - 1090'. TAGGED @ 1093'.

1/24/24 - PERF @ 300'. PUMPED 120 SX CLASS "C" CEMENT FROM 300' - SURFACE. VERIFIED CEMENT AT SURFACE.

Approved for plugging of well bore only. Liability under bond is retained pending receipt of C-103 (Subsequent Report of Well Plugging) which may be found at OCD Web Page under Forms,

Spud Date:

Rig R

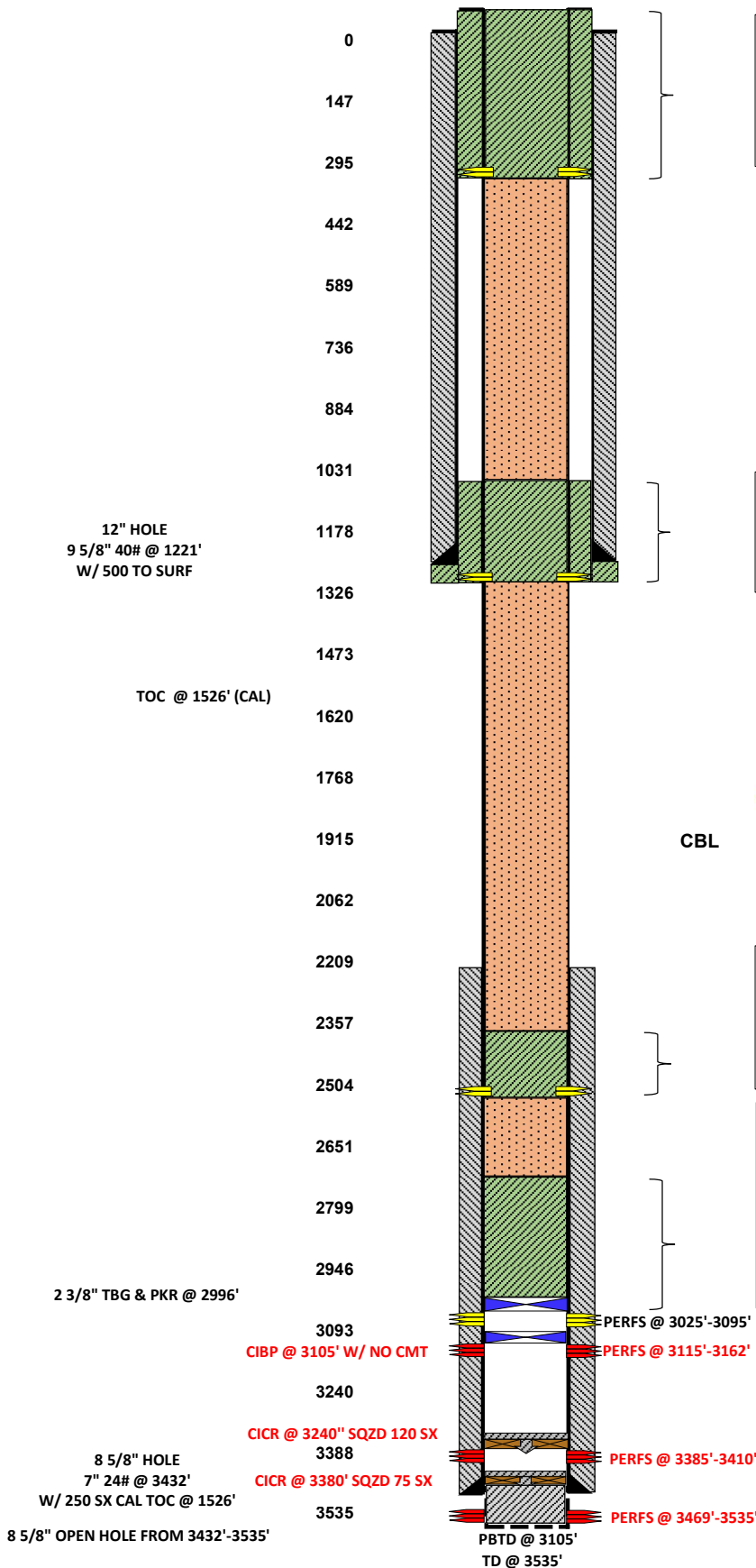
I hereby certify that the information above is true and complete to the best of my knowledge and belief.

SIGNATURE  TITLE P & A ENGINEER DATE Type or print name KELTON WOODARD E-mail address: kelton@jmrsservices.com PHONE: (432)618-1050**For State Use Only**APPROVED BY: Kerry Fortner TITLE Compliance Officer A DATE 2/23/24Conditions of Approval any



LEASE NAME	JALMAT STATE GAS COM
WELL #	#003
API #	30-025-11318
COUNTY	LEA, NM

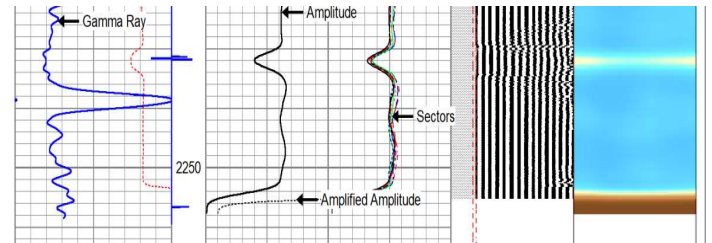
FINAL PA WB DIAGRAM



PLUG #4
1/24/2024 PUH & PERF'D @ 300', EPIR SQZ'D/CIRC'D 110 SX CLASS "C" CMT FROM 300' TO SURF & FILLED UP. RDMO, CUT OFF WH & ANCHORS, INSTALL DRY HOLE MARKER, CLEAN LOCATION, P&A COMPLETE.

PLUG #3
1/23/2024 PUH & PERF'D @ 1290' & SQZ'D 80 SX CLASS "C" CMT FROM 1290'-1090', TAGGED TOC @ 1093'. KERRY FORTNER W/OCD APPROVED TAG.

CBL



PLUG #2
1/22/2024 PUH & PERF'D @ 2500' & SQZ'D 70 SX CLASS "C" CMT FROM 2500'-2300'.
1/23/2024 TAGGED TOC @ 2364', KERRY FORTNER W/OCD APPROVED TAG.

PLUG #1
1/17-19/2024 MIRU P&A RIG & W/O WELLHEAD.
1/20/2024 RIH & VERIFY CIBP @ 3085' (SET BY PREP RIG), CIRC'D MLF & SPOTTED 65 SX CLASS "C" CMT FROM 3085'-2700'.
1/22/2024 TAGGED TOC @ 2783'. KERRY FORTNER W/OCD, APPROVED TAG. RAN CBL & TAGGED UP @ 2265' SCANNED FROM 2265' NO CMT. KERRY FORTNER W/OCD ADVISED TO PRF & SQZ FROM 2500'-2300'.

PRIOR TO P&A, MIRU PREP RIG TO POOH & LD PROD EQUIPMENT, SET CIBP @ 3085" W/ NO CMT, RDMO, TURN OVER TO P&A .

District I
1625 N. French Dr., Hobbs, NM 88240
Phone:(575) 393-6161 Fax:(575) 393-0720
District II
811 S. First St., Artesia, NM 88210
Phone:(575) 748-1283 Fax:(575) 748-9720
District III
1000 Rio Brazos Rd., Aztec, NM 87410
Phone:(505) 334-6178 Fax:(505) 334-6170
District IV
1220 S. St Francis Dr., Santa Fe, NM 87505
Phone:(505) 476-3470 Fax:(505) 476-3462

State of New Mexico
Energy, Minerals and Natural Resources
Oil Conservation Division
1220 S. St Francis Dr.
Santa Fe, NM 87505

COMMENTS

Action 312030

COMMENTS

Operator: APACHE CORPORATION 303 Veterans Airpark Ln Midland, TX 79705	OGRID: 873
	Action Number: 312030
	Action Type: [C-103] Sub. Plugging (C-103P)

COMMENTS

Created By	Comment	Comment Date
plmartinez	DATA ENTRY PM.	2/26/2024

District I
1625 N. French Dr., Hobbs, NM 88240
Phone:(575) 393-6161 Fax:(575) 393-0720
District II
811 S. First St., Artesia, NM 88210
Phone:(575) 748-1283 Fax:(575) 748-9720
District III
1000 Rio Brazos Rd., Aztec, NM 87410
Phone:(505) 334-6178 Fax:(505) 334-6170
District IV
1220 S. St Francis Dr., Santa Fe, NM 87505
Phone:(505) 476-3470 Fax:(505) 476-3462

State of New Mexico
Energy, Minerals and Natural Resources
Oil Conservation Division
1220 S. St Francis Dr.
Santa Fe, NM 87505

CONDITIONS

Action 312030

CONDITIONS

Operator: APACHE CORPORATION 303 Veterans Airpark Ln Midland, TX 79705	OGRID: 873
	Action Number: 312030
	Action Type: [C-103] Sub. Plugging (C-103P)

CONDITIONS

Created By	Condition	Condition Date
kfortner	Need C103Q and marker photo to release	2/23/2024