

Submit 1 Copy To Appropriate District Office
 District I – (575) 393-6161
 1625 N. French Dr., Hobbs, NM 88240
 District II – (575) 748-1283
 811 S. First St., Artesia, NM 88210
 District III – (505) 334-6178
 1000 Rio Brazos Rd., Aztec, NM 87410
 District IV – (505) 476-3460
 1220 S. St. Francis Dr., Santa Fe, NM 87505

State of New Mexico
 Energy, Minerals and Natural Resources

Form C-103
 Revised July 18, 2013

OIL CONSERVATION DIVISION
 1220 South St. Francis Dr.
 Santa Fe, NM 87505

SUNDRY NOTICES AND REPORTS ON WELLS (DO NOT USE THIS FORM FOR PROPOSALS TO DRILL OR TO DEEPEN OR PLUG BACK TO A DIFFERENT RESERVOIR. USE "APPLICATION FOR PERMIT" (FORM C-101) FOR SUCH PROPOSALS.) 1. Type of Well: Oil Well <input type="checkbox"/> Gas Well <input checked="" type="checkbox"/> Other <input type="checkbox"/>		WELL API NO. 30-025-06430 5. Indicate Type of Lease STATE <input checked="" type="checkbox"/> FEE <input type="checkbox"/> 6. State Oil & Gas Lease No.
2. Name of Operator Energy Acumen LLC		7. Lease Name or Unit Agreement Name Alves A
3. Address of Operator 10103 Gutierrez Rd NE, Albuquerque, NM 87111		8. Well Number: 001
4. Well Location Unit Letter: P : 330 feet from the S line and 660 feet from the E line Section 07 Township 21S Range 37E NMPM County: Lea		9. OGRID Number: 373817
11. Elevation (Show whether DR, RKB, RT, GR, etc.)		10. Pool name or Wildcat EUMONT;YATES-7 RVRS-QUEEN

12. Check Appropriate Box to Indicate Nature of Notice, Report or Other Data

NOTICE OF INTENTION TO:		SUBSEQUENT REPORT OF:	
PERFORM REMEDIAL WORK <input type="checkbox"/>	PLUG AND ABANDON <input type="checkbox"/>	REMEDIAL WORK <input type="checkbox"/>	ALTERING CASING <input type="checkbox"/>
TEMPORARILY ABANDON <input type="checkbox"/>	CHANGE PLANS <input type="checkbox"/>	COMMENCE DRILLING OPNS. <input type="checkbox"/>	P AND A <input checked="" type="checkbox"/>
PULL OR ALTER CASING <input type="checkbox"/>	MULTIPLE COMPL <input type="checkbox"/>	CASING/CEMENT JOB <input type="checkbox"/>	PNR <input type="checkbox"/>
DOWNHOLE COMMINGLE <input type="checkbox"/>			
CLOSED-LOOP SYSTEM <input type="checkbox"/>			
OTHER: <input type="checkbox"/>		OTHER: <input type="checkbox"/>	

13. Describe proposed or completed operations. (Clearly state all pertinent details, and give pertinent dates, including estimated date of starting any proposed work). SEE RULE 19.15.7.14 NMAC. For Multiple Completions: Attach wellbore diagram of proposed completion or recompletion.

See Plugging Procedure/Events Below

Approved for plugging of well bore only. Liability under bond is retained pending receipt of C-103 (Subsequent Report of Well Plugging) which may be found at OCD Web Page under Forms,

Spud Date:

Rig Release Date:

I hereby certify that the information above is true and complete to the best of my knowledge and belief.

SIGNATURE Ethan Wakefield TITLE: Authorized Representative DATE: 1/31/24

Type or print name: Ethan Wakefield E-mail address: e.wakefield@dwsrigs.com PHONE: (405)343-7736

For State Use Only

APPROVED BY: Kerry Fortner TITLE: Compliance Officer A DATE: 2/26/24

Conditions of Approval (if any):

Energy Acumen LLC

Plug And Abandonment End Of Well Report

Alves A #001

330' FSL & 660' FEL, Section 07, 21S, 37E

Lea County, NM / API 30-025-06430

Work Summary:

- 12/15/23** Made BLM and NMOCD P&A operations notifications at 9:00 AM MST.
- 12/16/23** Arrived on location. Finished moving equipment to location. Worked on road and well site. Was notified that the well had not been monitored for gas by the Well-Done Foundation. Shut in and secured well and equipment. Drove to Cato field to get tubing trailer and work string.
- 12/17/23** Arrived on location. Held safety meeting. Checked well pressures. R/D Well-Done's equipment. R/U unit and equipment. Gas detectors detected some H₂S. Pumped 80 bbls of water with 2 gallons of scavenger. ND WH, NU BOP, R/U floor and equipment. Prepped and tallied 2-3/8" work string. P/U 7" casing scraper. TIH to 3542'. Drain equipment. Shut in and secured well.
- 12/18/23** Arrived on location. Held safety meeting. Checked well pressures. TOOH. L/D casing scraper. Installed 7" CR. TIH and set CR at 3546'. R/U cementing services. Successfully circulated well with 106 bbls, pumped 150 bbls total. Attempted to pressure test casing but test failed. R/U wireline services. RIH and logged well. POOH. R/D wireline services. Shut in and secured well.
- 12/19/23** Arrived on location. Held safety meeting. Checked well pressures. Due to bad casing, picked up another 7" CR. TIH and set at 3462'. R/U cementing services. Rolled hole. Attempted to pressure test casing but test was unsuccessful. Pumped plug #1 from 3462' to 3342'. TOOH. Only pulled 18 stands out of hole. Lost tubing down

hole. TIH and attempted to screw back on to tubing but was unsuccessful. TOOH. Waiting on overshot. Shut in and secured well.

- 12/20/23** Arrived on location. Held safety meeting. Checked well pressures. P/U overshot. TIH and tagged fish at 890'. R/U wireline services. RIH with cutoff tool. Could not get into fish. Shutdown for safety meeting from 12:00 to 2:00. TIH with tagging tool. Could not get past 890'. TOOH. Service rig and completed minor maintenance. Spot pump and power swivel.
- 12/21/23** Arrived on location. Held safety meeting. Checked well pressures. Completed rig maintenance. Waited on tools and equipment to mill. R/U power swivel and tools to mill. Shut in and secured well and location.
- 12/22/23** Arrived on location. Held safety meeting. Did not have cross over from mill to 2-3/8" tubing. TOOH. L/D tubing and power swivel. Rig down equipment and rig. Move rig and equipment form location to Hobbs yard.
- 1/4/24** Arrived on location. Held safety meeting. Moved rig and all equipment from Hobbs yard to location. Heavy fog caused a late start. Monitored gas levels on location and surroundings. No gas was detected. Spot rig and equipment. Rig up floor. Checked well pressures. Pick up 6-4/3" mill and 5 collars. BHA depth 156'. P/U 23 joints and tagged top of fish at 873'. L/D 1 joint and installed 2-3/8" rubber. Shut in and secured well for the day.
- 1/5/24** Arrived on location. Held safety meeting. Checked well pressures. Ensured functionality of gas monitors. R/U power swivel. R/U mud pump and circulated well at 870' with 20 bbl. Drilled cement from 873' to 1019'. Washed down to 1115'. R/D swivel. Continue to TIH. Tagged at 1194'. Shut in and secured well.
- 1/6/24** Arrived on location. Held safety meeting. Checked gas monitors. Checked well pressures. R/U power swivel. Drilled cement from 1194' to 1204'. Metal shavings in returns. Circulate well. R/D swivel. TOOH. R/U overshot. TIH to and latched onto fish at 1229'. R/U wireline services. RIH with gage ring to 1238'. POOH. Release overshot. TOOH. Shut in and secured well.
- 1/7/24** Arrived on location. Held safety meeting. Checked gas monitors. Checked well pressures. Serviced rig and equipment. Shut in and secured well.
- 1/8/24** Arrived on location. Held safety meeting. Checked gas monitors. Checked well pressures. P/U skirted mill, 5 collars, and 7 stands of 2-

3/8". Shut down due to high winds. Secure well. Service rig and equipment. Shut down for the day.

- 1/9/24** Arrived on location. Held safety meeting. Checked gas monitors. Checked well pressures. Continue to TIH. Tagged at 1217'. R/U power swivel. Break circulation. Mill down to 1318'. Circulate hole clean. R/D swivel. TOOH. Stand back collars. Inspected mill. P/U overshot. Drain equipment, shut in well, and secure location.
- 1/10/24** Arrived on location. Held safety meeting. Checked gas monitors. Checked well pressures. Change out drill. P/U overshot. TIH to top of fish at 1318'. Latch onto fish. R/U wireline services. ran 1.75" gauge ring. Gauge ring tagged at 1315', will not go onto fish. POOH. Remove gauge ring and P/U 1.68" weighted bar. Worked down to 1319'. POOH. R/D wireline. Tried to work pipe free, but pipe will not move. Unset overshot. TOOH. Shut in and secured well.
- 1/11/24** Shutdown.
- 1/16/24** Arrived on location. Held safety meeting. Monitored location for gas. Prepped equipment and fishing tools for operations to resume tomorrow. Shut in and secured well.
- 1/17/24** Arrived on location. Held safety meeting. Monitored location for gas. Checked well pressures. Prepped and tallied wash pipe and cutting tools. P/U tools and wash pipe. TIH and tagged at 1356'. P/U tubing to 1499', shear pins. P/U power swivel. Cut tubing at 1506'. R/D power swivel. TOOH. L/D 5 joints of stuck tubing plugged with cement. Re-dress cutting tool. P/U tools and wash pipe. TIH to 1506'. P/U tubing to 1675'. Shear pins. R/U power swivel. Cut tubing at 1675'. R/D power swivel. TOOH. L/D 6 joints of tubing plugged with cement. L/D wash pipe and cutting tools.
- 1/18/24** Arrived on location. Held safety meeting. Monitored location for gas. Checked well pressures. P/U wash pipe and cutters. TIH to 1675'. P/U 6 joints. Shear pins. P/U power swivel. Cut tubing at 1863'. R/D power swivel. TOOH. L/D 6 joints of fish (tubing plugged with cement). L/D wash pipe and cutters. Re-dress cutters. P/U wash pipe and cutters. TIH to 1863'. P/U tubing to 2102'. Shear pins. P/U power swivel. Cut tubing at 2100'. R/D power swivel. TOOH. L/D 6 joints of fish (tubing plugged with cement). L/D wash pipe and cutters. Shut in and secured well.
- 1/19/24** Arrived on location. Held safety meeting. Monitored location for gas. Checked well pressures. P/U wash pipe and cutters. TIH to 2100'. P/U 6 joints. R/U power swivel. Shear pins and cut tubing at 2218'.

R/D power swivel. TOOH. L/D 6 joints of fish, tubing plugged with cement. L/D wash pipe and cutters. Re-dress cutters. P/U wash pipe and cutters. TIH to 2218'. P/U 6 joints. R/U power swivel. Shear pins and cut tubing at 2438'. R/D power swivel. TOOH. L/D 6 joints of fish, tubing plugged with cement. L/D wash pipe and cutters. Re-dress cutters. Shut in and secured well.

1/20/24 Arrived on location. Held safety meeting. Monitored location for gas. Checked well pressures. P/U wash pipe and cutters. TIH to 2438'. P/U 6 joints. R/U power swivel. Shear pins and cut tubing at 2618'. R/D power swivel. TOOH. No fish. L/D wash pipe and cutters. Re-dress cutters. P/U overshot. TIH and attempted to latch onto fish at 2438'. TOOH. No fish. Removed overshot. P/U wash pipe and cutters. TIH to 2460'. P/U 4 joints. R/U power swivel. Shear pins and cut tubing at 2540'. R/D power swivel. TOOH. L/D 3 joints of fish, tubing plugged with cement. L/D wash pipe and cutters. Re-dress cutters. Shut in and secured well.

1/21/24 Arrived on location. Held safety meeting. Monitored location for gas. Checked well pressures. P/U wash pipe and cutters. TIH to 2540'. P/U 6 joints. R/U power swivel. Shear pins and cut tubing at 2665'. R/D power swivel. TOOH. L/D 6 joints plugged with cement. L/D wash pipe and cutters. Re-dress cutters. P/U wash pipe and cutters. TIH to 2665'. P/U 6 joints. R/U power swivel. Shear pins and cut tubing at 2880'. R/D power swivel. TOOH. L/D 6 joints of fish, tubing plugged with cement. L/D wash pipe and cutters. Re-dress cutters. Shut in and secured well.

1/22/24 Arrived on location. Held safety meeting. Monitored location for gas. Checked well pressures. R/U wireline services. RIH and tagged at 3364'. R/D wireline. TIH to 2846'. R/U cementing services. Circulated hole with 11 bbls, pumped 13 bbls total. Pumped plug #2 from 2846' to 2390'. R/D cementers. L/D 16 joints and TOOH. WOC 4 hours. TIH and tagged plug #2 at 2385'. R/U cementing services. Attempted to pressure test casing but test did not pass. Pumped mud/gel spacer from 2385' to 1395'. R/D cementing services. Pumped plug #3 from 1395' to 1157'. R/D cementers. L/D 8 joints and TOOH. WOC overnight. Shut in and secured well.

1/23/24 Arrived on location. Held safety meeting. Monitored location for gas. Checked well pressures. TIH and tagged plug #3 at 1151'. R/U cementing services. Pumped weighted spacer from 1151' to 224'. R/D cementers. L/D 28 joints. R/U cementing services. Pumped plug #4 from 224' to surface, cement circulated out the BH valve, shut BH valve, opened 7" casing valve and continued pumping plug #4 to surface. L/D tubing, R/D floor, ND BOP, NU WH. R/D unit and equipment. Prepare to MOL.

1/27/24 Arrived on location. Held safety meeting. Completed gas check. Used backhoe to safely expose wellhead. Set up welding unit on location. Performed wellhead cutoff. Removed old wellhead. Cement was 10' low in both strings. R/U cementing services. Topped off both strings using 1" poly pipe. Welder attached marker per NMOCD regulations. R/U cementing services.

Plug Summary:

Plug #1: (Perforations, 3,462'-3,364', 23 Sacks Type I/II Cement)

P/U 7" CR. TIH and set at 3462'. R/U cementing services. Rolled hole. Attempted to pressure test casing but test was unsuccessful. Pumped plug #1 from 3462' to 3342'. TOOH. Only pulled 18 stands out of hole. Lost tubing down hole. TIH and attempted to screw back on to tubing but was unsuccessful. TOOH. Fished and cut tubing. R/U wireline services. RIH and tagged at 3364'. R/D wireline.

Plug #2: (Documented Formation Tops, 2,846'-2,385', 87 Sacks Type I/II Cement)

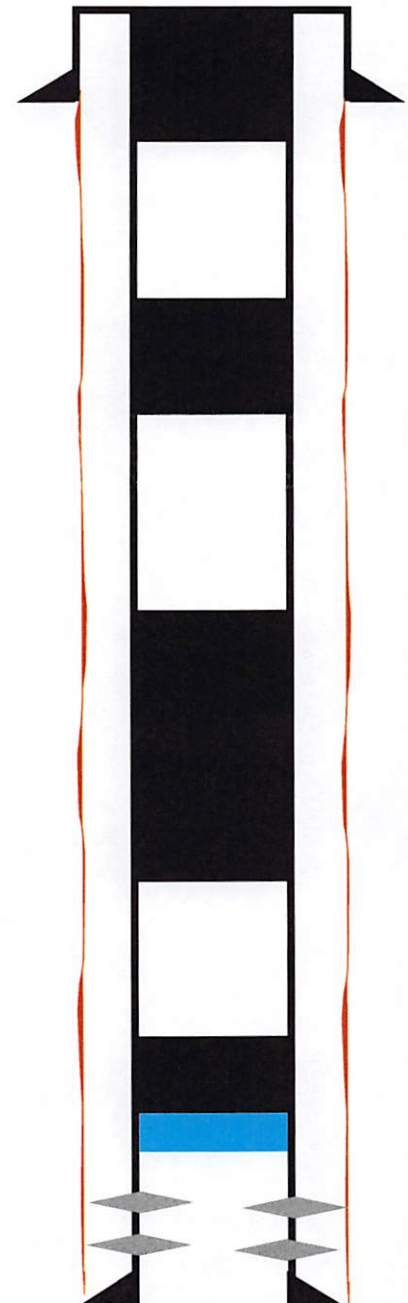
TIH to 2846'. R/U cementing services. Circulated hole with 11 bbls, pumped 13 bbls total. Pumped plug #2 from 2846' to 2390'. R/D cementers. L/D 16 joints and TOOH. WOC 4 hours. TIH and tagged plug #2 at 2385'.

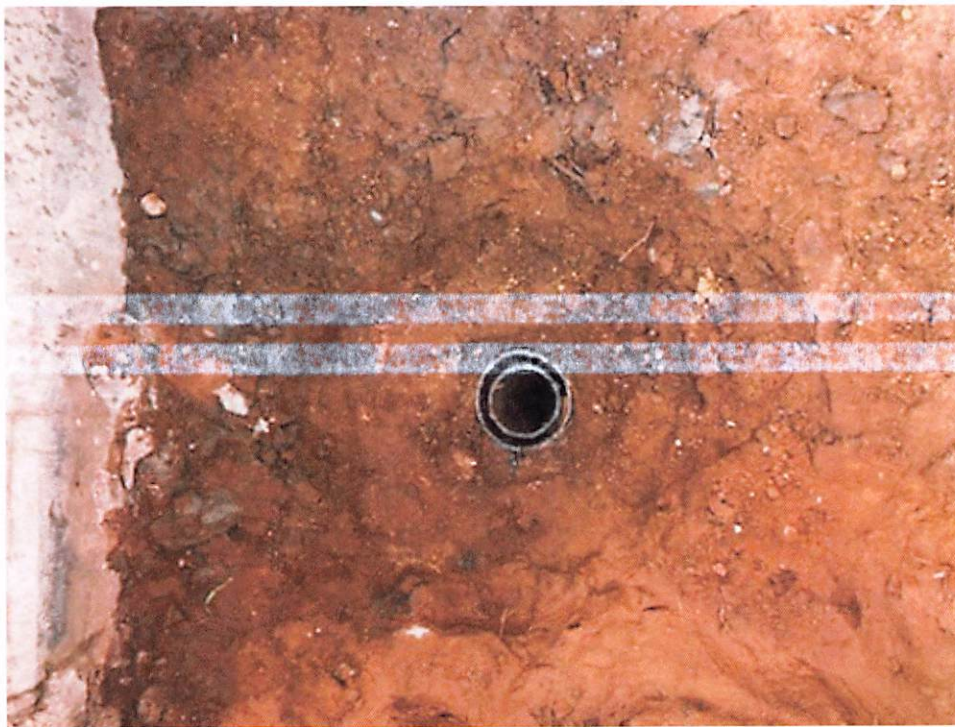
Plug #3: (Documented Formation Tops, 1,395'-1,151', 47 Sacks Type I/II Cement)

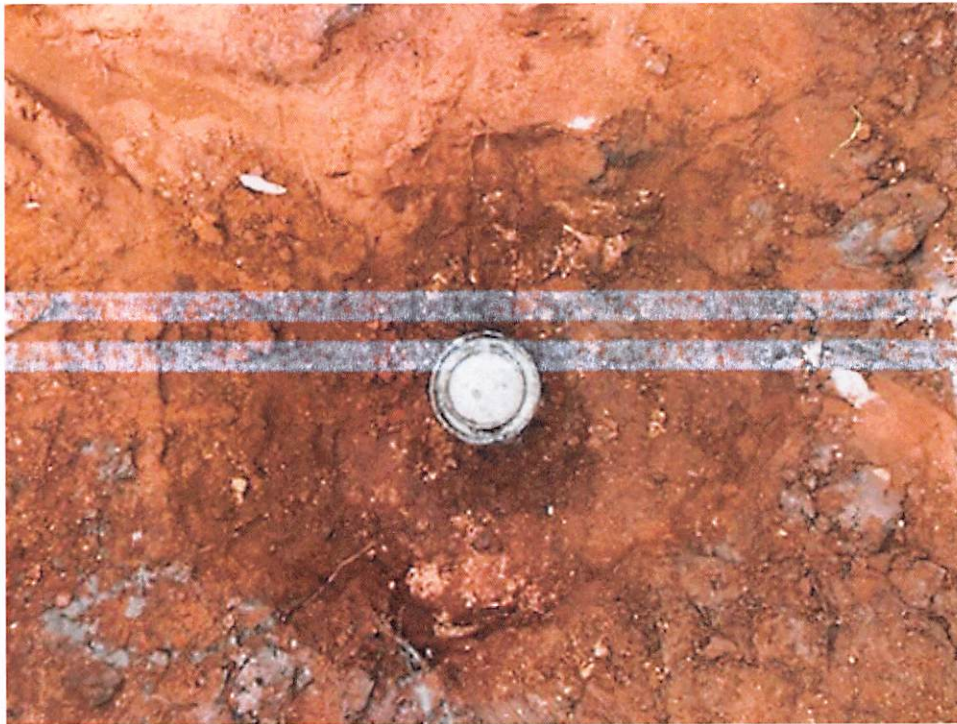
Pumped plug #3 from 1395' to 1157'. R/D cementers. L/D 8 joints and TOOH. WOC overnight. TIH and tagged plug #3 at 1151'.

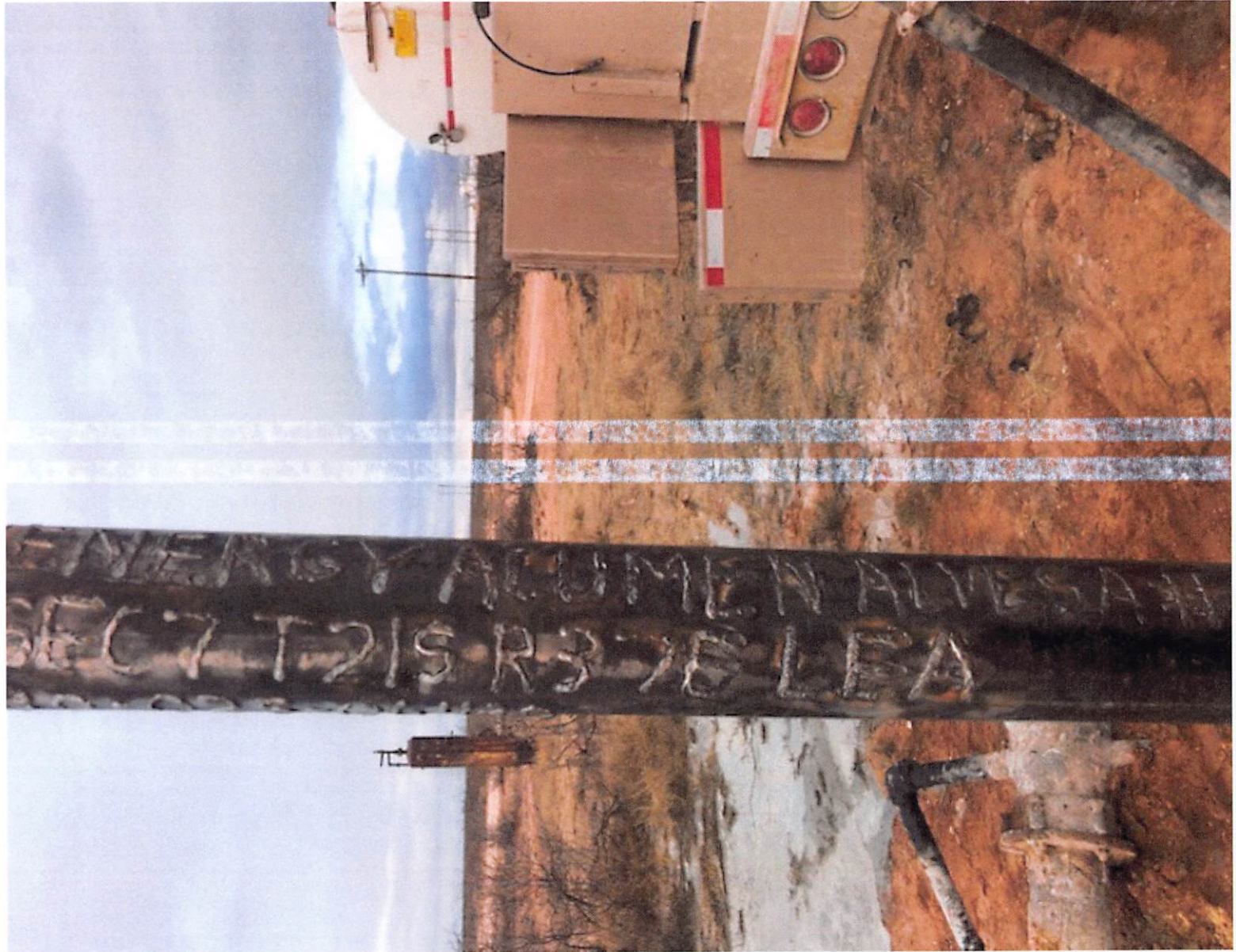
Plug #4: (Surface, 224'-Surface, 92 Sacks Type I/II Cement (12 sx for top off))

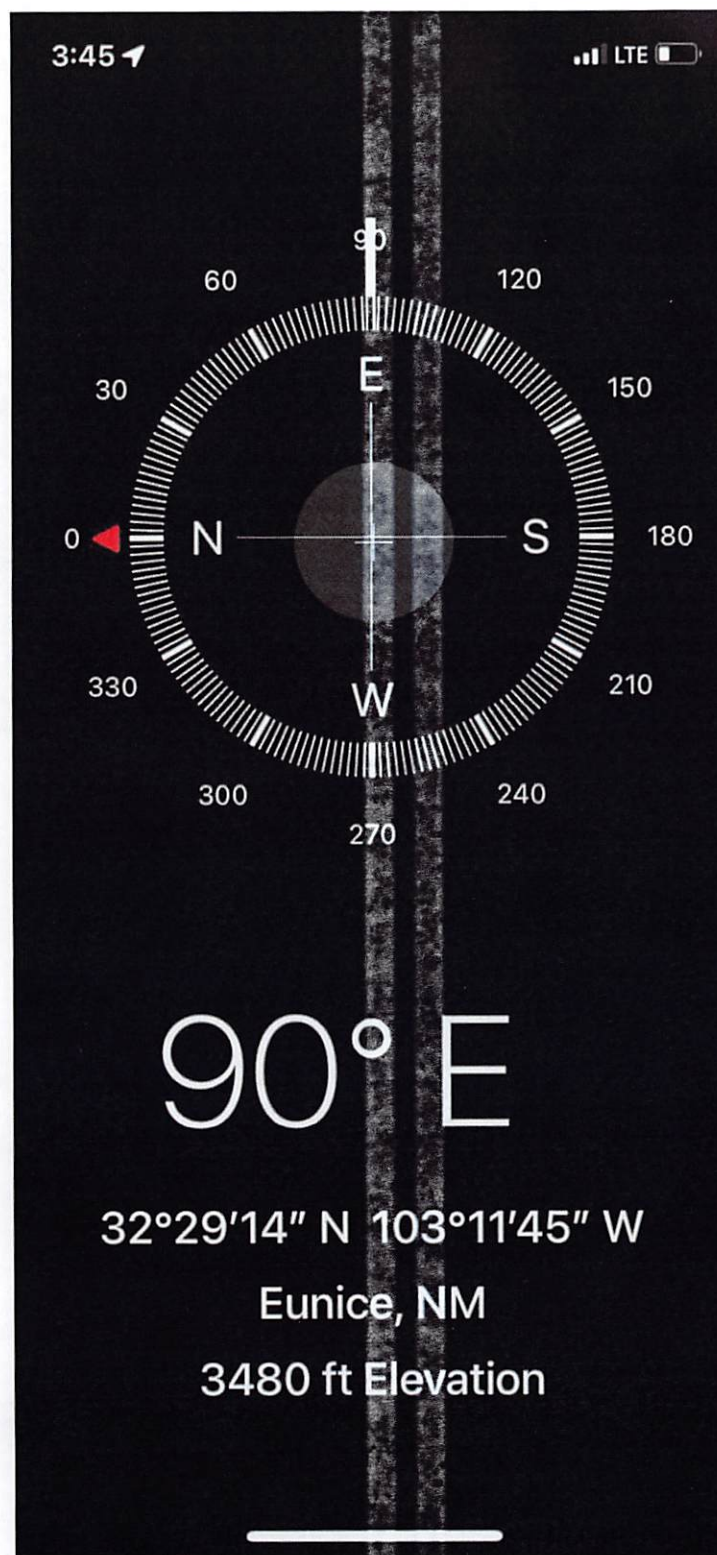
L/D 28 joints. R/U cementing services. Pumped plug #4 from 224' to surface, cement circulated out the BH valve, shut BH valve, opened 7" casing valve and continued pumping plug #4 to surface. Removed old wellhead. Cement was 10' low in both strings. R/U cementing services. Topped off both strings using 1" poly pipe. Welder attached marker per NMOCD regulations. R/U cementing services.











District I
1625 N. French Dr., Hobbs, NM 88240
Phone:(575) 393-6161 Fax:(575) 393-0720
District II
811 S. First St., Artesia, NM 88210
Phone:(575) 748-1283 Fax:(575) 748-9720
District III
1000 Rio Brazos Rd., Aztec, NM 87410
Phone:(505) 334-6178 Fax:(505) 334-6170
District IV
1220 S. St Francis Dr., Santa Fe, NM 87505
Phone:(505) 476-3470 Fax:(505) 476-3462

State of New Mexico
Energy, Minerals and Natural Resources
Oil Conservation Division
1220 S. St Francis Dr.
Santa Fe, NM 87505

COMMENTS

Action 312320

COMMENTS

Operator: Energy Acumen LLC 10103 Gutierrez Rd NE Albuquerque, NM 87111	OGRID: 373817
	Action Number: 312320
	Action Type: [C-103] Sub. Plugging (C-103P)

COMMENTS

Created By	Comment	Comment Date
plmartinez	DATA ENTRY PM.	2/27/2024

District I
1625 N. French Dr., Hobbs, NM 88240
Phone:(575) 393-6161 Fax:(575) 393-0720

District II
811 S. First St., Artesia, NM 88210
Phone:(575) 748-1283 Fax:(575) 748-9720

District III
1000 Rio Brazos Rd., Aztec, NM 87410
Phone:(505) 334-6178 Fax:(505) 334-6170

District IV
1220 S. St Francis Dr., Santa Fe, NM 87505
Phone:(505) 476-3470 Fax:(505) 476-3462

State of New Mexico
Energy, Minerals and Natural Resources
Oil Conservation Division
1220 S. St Francis Dr.
Santa Fe, NM 87505

CONDITIONS

Action 312320

CONDITIONS

Operator: Energy Acumen LLC 10103 Gutierrez Rd NE Albuquerque, NM 87111	OGRID: 373817
	Action Number: 312320
	Action Type: [C-103] Sub. Plugging (C-103P)

CONDITIONS

Created By	Condition	Condition Date
kfortner	Need C103Q and marker photo to release	2/26/2024