

Submit 1 Copy To Appropriate District
Office
District I – (575) 393-6161
1625 N. French Dr., Hobbs, NM 88240
District II – (575) 748-1283
811 S. First St., Artesia, NM 88210
District III – (505) 334-6178
1000 Rio Brazos Rd., Aztec, NM 87410
District IV – (505) 476-3460
1220 S. St. Francis Dr., Santa Fe, NM
87505

State of New Mexico
Energy, Minerals and Natural Resources

Form C-103
Revised July 18, 2013

OIL CONSERVATION DIVISION
1220 South St. Francis Dr.
Santa Fe, NM 87505

WELL API NO. 30-025-06927
5. Indicate Type of Lease STATE <input checked="" type="checkbox"/> FEE <input type="checkbox"/>
6. State Oil & Gas Lease No.
7. Lease Name or Unit Agreement Name Pruitt
8. Well Number: 001
9. OGRID Number: 373817
10. Pool name or Wildcat PENROSE SKELLY;GRAYBURG
11. Elevation (Show whether DR, RKB, RT, GR, etc.)

SUNDRY NOTICES AND REPORTS ON WELLS

(DO NOT USE THIS FORM FOR PROPOSALS TO DRILL OR TO DEEPEN OR PLUG BACK TO A DIFFERENT RESERVOIR. USE "APPLICATION FOR PERMIT" (FORM C-101) FOR SUCH PROPOSALS.)

1. Type of Well: Oil Well ☒ Gas Well ☐ Other ☐

2. Name of Operator
Energy Acumen LLC

3. Address of Operator
10103 Gutierrez Rd NE, Albuquerque, NM 87111

4. Well Location

Unit Letter: P : 660 feet from the S line and 660 feet from the E line

Section 31 Township 21S Range 37E NMPM County: Lea

12. Check Appropriate Box to Indicate Nature of Notice, Report or Other Data

NOTICE OF INTENTION TO:

PERFORM REMEDIAL WORK ☐ PLUG AND ABANDON ☐
TEMPORARILY ABANDON ☐ CHANGE PLANS ☐
PULL OR ALTER CASING ☐ MULTIPLE COMPL ☐
DOWNHOLE COMMINGLE ☐
CLOSED-LOOP SYSTEM ☐
OTHER: ☐

SUBSEQUENT REPORT OF:

REMEDIAL WORK ☐ ALTERING CASING ☐
COMMENCE DRILLING OPNS. ☐ P AND A ☒
CASING/CEMENT JOB ☐ PNR ☐
OTHER: ☐

13. Describe proposed or completed operations. (Clearly state all pertinent details, and give pertinent dates, including estimated date of starting any proposed work). SEE RULE 19.15.7.14 NMAC. For Multiple Completions: Attach wellbore diagram of proposed completion or recompletion.

See Plugging Procedure/Events Below

Approved for plugging of well bore only. Liability under bond is retained pending receipt of C-103 (Subsequent Report of Well Plugging) which may be found at OCD Web Page under Forms,

Spud Date:

Rig Release Date:

I hereby certify that the information above is true and complete to the best of my knowledge and belief.

SIGNATURE Ethan Wakefield TITLE: Authorized Representative DATE: 1/31/24

Type or print name: Ethan Wakefield E-mail address: e.wakefield@dwsrigs.com PHONE: (405)343-7736

For State Use Only

APPROVED BY: Kerry Fortner TITLE: Compliance Officer A DATE: 2/26/24

Conditions of Approval (if any):

Energy Acumen LLC

Plug And Abandonment End Of Well Report

Pruitt #001

660' FSL & 660' FEL, Section 31, 21S, 37E

Lea County, NM / API 30-025-06927

Work Summary:

- 1/18/24** Made BLM and NMOCD P&A operations notifications at 9:00 AM MST.
- 1/19/24** Arrived on location. Completed radial check for H2S and other gas. High H2S levels detected. Checked well pressures. R/U cementing services. Pumped 50 bbls of water and 2 bbls of scavenger. R/D cementers. Shut in and secured well.
- 1/20/24** Arrived on location. Completed radial check for H2S and other gas. Checked well pressures. Prepped location with backhoe. R/U unit and equipment. Removed horses head. Worked rod string. L/D polished rod, 130 3/4" stick rods, and rod pump. Pumped 40 bbls down tubing. N/D WH, NU BOP, R/U floor and equipment. Shut in and secured well.
- 1/21/24** Arrived on location. Completed radial check for H2S and other gas. Checked well pressures. L/D 114 2-3/8" joints of tubing, SN, Perforated sub, and 2-3/8" pup. Prepped and tallied 2-3/8" work string. Installed 7" mill. P/U tubing and tagged hard at 2333'. Worked hard spot. R/U power swivel and pump. Milled on hard spot from 2333' to 2335'. Hydraulic hose on unit ruptured. R/D pump and power swivel. Shut in and secured well.
- 1/22/24** Arrived on location. Held safety meeting. Completed radial check for H2S and other gas. Checked well pressures. Replaced ruptured hose. TIH with mill to 2335'. R/U pump and power swivel. Milled from 2335' to 2336'. R/D pump and power swivel. TOOH. Removed mill. Installed 5.5" scraper. TIH to 3465'. Scraper is repeatedly getting

caught. TOOH. Removed scraper. TIH to 3559'. R/U cementers. Pumped 15 bbl mud pill. R/D cementers. TOOH with 10 stands. Shut in and secured well.

1/23/24 Arrived on location. Held safety meeting. Completed radial check for H2S and other gas. Checked well pressures. TIH to 3559'. R/U cementing services. Pumped plug #1 from 3559' to 3250'. R/D cementers. L/D 11 joints. TOOH. WOC 4 hours. TIH and tagged plug #1 at 3186'. R/U cementers. Successfully circulated well with 50 bbls. Pumped 60 bbls total. Attempted to pressure test casing but casing failed test. Pumped mud/gel spacer from 3186' to 2800'. R/D cementers. L/D 11 joints. R/U cementing services. Pumped plug #2 from 2800' to 2650'. R/D cementers. L/D 6 joints and TOOH. Shut in and secured well.

1/24/24 Arrived on location. Held safety meeting. Completed radial check for H2S and other gas. Checked well pressures. Late start due to fog. TIH and tagged plug #2 at 2638'. R/U cementing services. Attempted to pressure test casing but casing failed. Attempted to pressure test BH, test did not pass the test. Filled BH with 8 bbls pumped 11 bbls total at 250#. Pumped mud/gel spacer from 2638' to 1250'. R/D cementers. L/D 44 joints and TOOH. R/U wireline services. RIH and logged well. POOH. R/D wireline. TIH to 1250'. R/U cementers. Pumped plug #3 from 1250' to 1095'. R/D cementers. L/D 6 joints and TOOH. WOC overnight. Shut in and secured well.

1/25/24 Arrived on location. Held safety meeting. Completed radial check for H2S and other gas. Checked well pressures. TIH and tagged plug #3 at 1080'. R/U cementers. Attempted to pressure test casing, casing failed test. Pumped mud/gel spacer from 1080' to 200'. R/D cementers. L/D 28 joints. R/U cementers. Pumped plug #4 from 200' to surface. Injected cement in to BH. R/D cementers. L/D tubing. R/D floor, NU WH, R/D equipment. Prepare to MOL.

1/27/24 Arrived on location. Held safety meeting. Completed gas check. Used backhoe to safely expose wellhead. Set up welding unit on location. Performed wellhead cutoff. Removed old wellhead. Cement was at surface in both strings. Welder attached marker per NMOCD regulations. R/U cementing services.

Plug Summary:

Plug #1: (Perforations and Queen Formation Top, 3,559'-3,186', 61 Sacks Type I/II Cement)

TIH to 3559'. R/U cementing services. Pumped plug #1 from 3559' to 3250'. R/D cementers. L/D 11 joints. TOOH. WOC 4 hours. TIH and tagged plug #1 at 3186'.

Plug #2: (Yates Formation Top, 2,800'-2,638', 30 Sacks Type I/II Cement)

R/U cementing services. Pumped plug #2 from 2800' to 2650'. R/D cementers. WOC overnight. TIH and tagged plug #2 at 2638'.

Plug #3: (Anhy Formation Top and Surface Casing Shoe, 1,250'-1,080', 31 Sacks Type I/II Cement)

TIH to 1250'. R/U cementers. Pumped plug #3 from 1250' to 1095'. R/D cementers. L/D 6 joints and TOOH. WOC overnight. TIH and tagged plug #3 at 1080'.

Plug #4: (Surface, 200'-Surface, 112 Sacks Type I/II Cement (0 sx for top off))

L/D tubing to 200'. R/U cementers. Pumped plug #4 from 200' to surface. Injected cement in to BH. R/D cementers. Removed old wellhead. Cement was at surface in both strings. Welder attached marker per NMOCD regulations. R/U cementing services

Proposed Wellbore Diagram

Energy Acuman LLC
Pruitt #001
API: 30-025-06927
Lea, New Mexico

Surface Casing

8.625" 24# @ 1195'
OH: 12.25"

Plug 4

200 feet - Surface
200 foot plug
112 Sacks of Type I/II Cement

Plug 3

1250 feet - 1080 feet
170 foot plug
31 Sacks of Type I/II Cement

Plug 2

2800 feet - 2638 feet
162 foot plug
30 Sacks of Type I/II Cement

Plug 1

3559 feet - 3186 feet
373 foot plug
61 sacks of Type I/II Cement

Formation tops

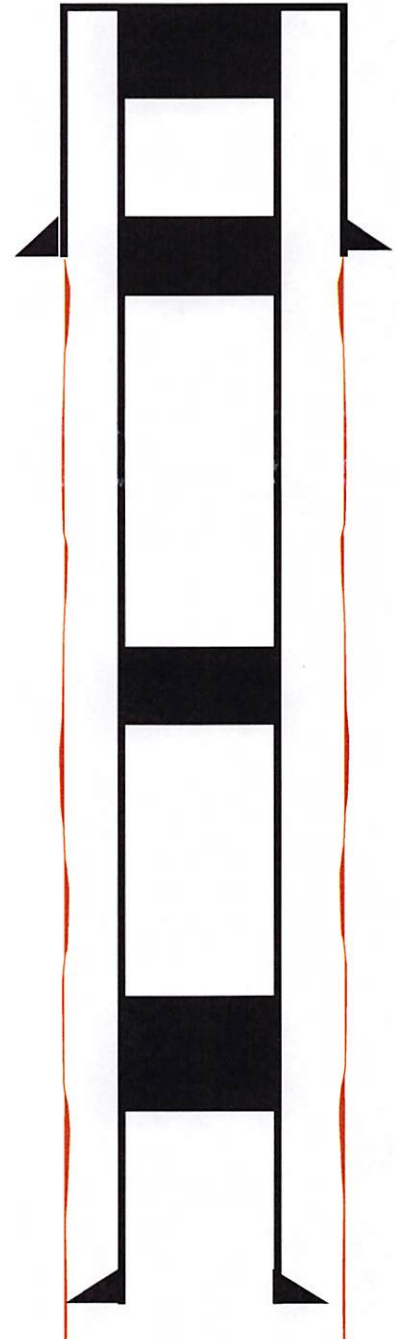
Anhy - 1200 feet
Yates - 2750 feet
Queen - 3350 feet
Grayburg - 3600 feet
San Andres - 3910 feet

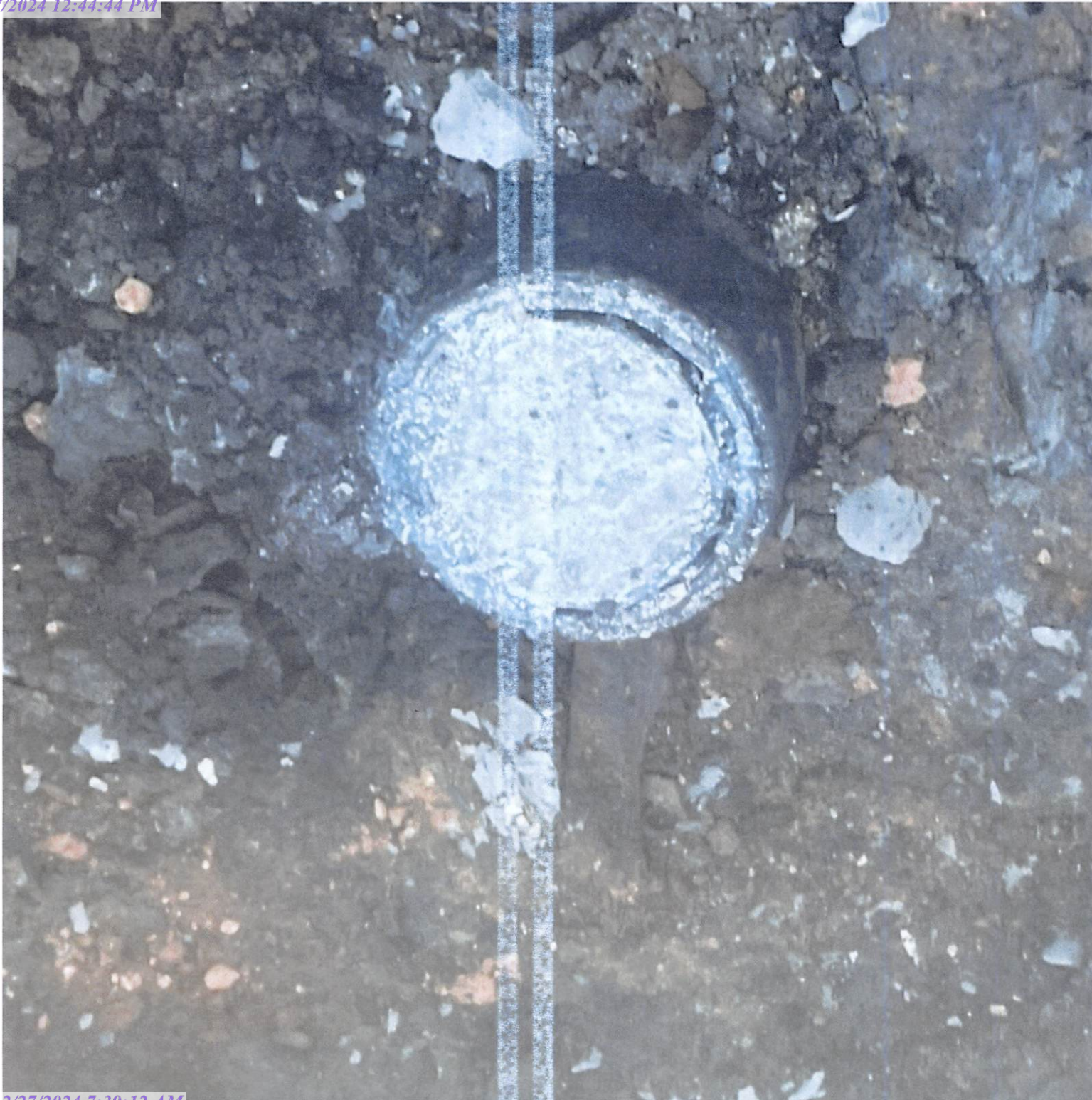
Perforations

unknown

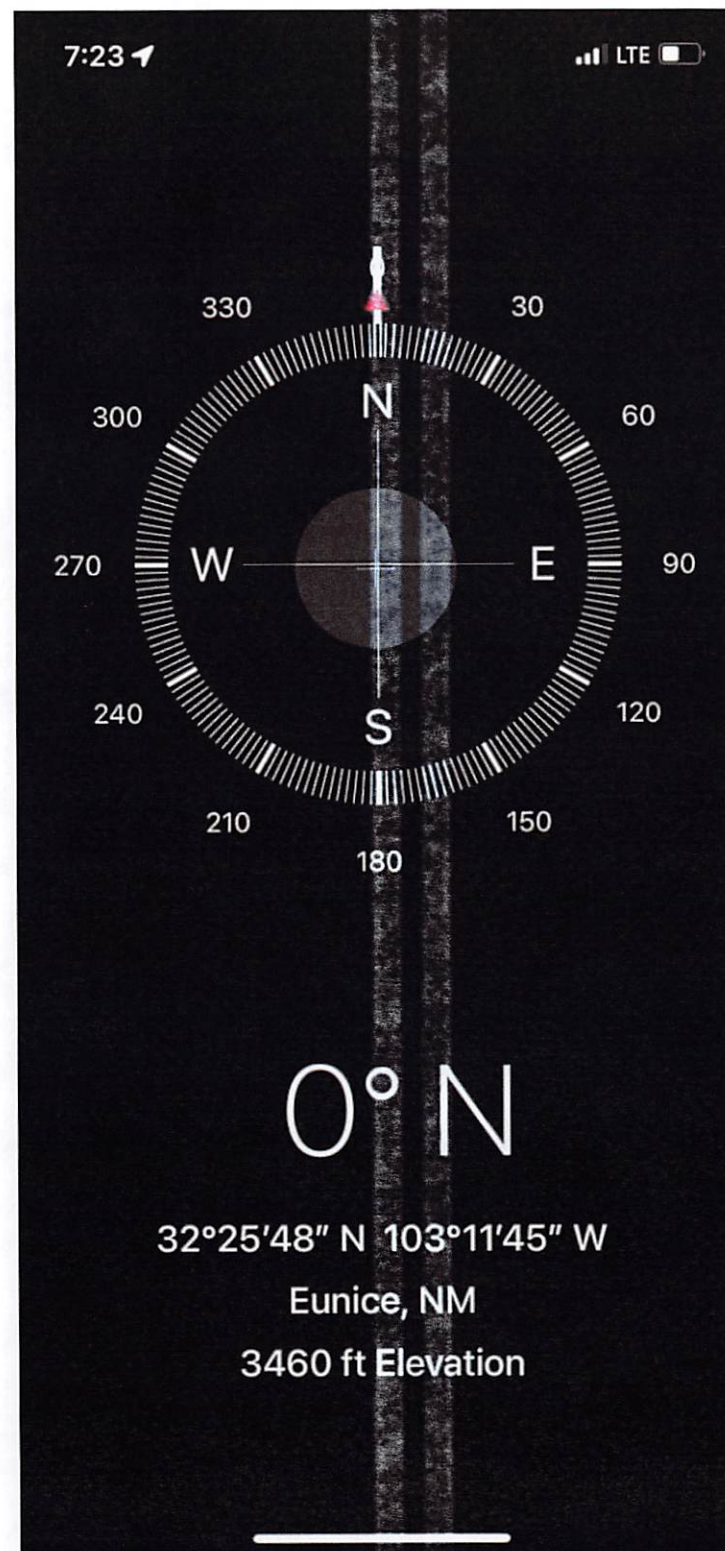
Production Casing

7" #17 @ 3592'









District I
1625 N. French Dr., Hobbs, NM 88240
Phone:(575) 393-6161 Fax:(575) 393-0720

District II
811 S. First St., Artesia, NM 88210
Phone:(575) 748-1283 Fax:(575) 748-9720

District III
1000 Rio Brazos Rd., Aztec, NM 87410
Phone:(505) 334-6178 Fax:(505) 334-6170

District IV
1220 S. St Francis Dr., Santa Fe, NM 87505
Phone:(505) 476-3470 Fax:(505) 476-3462

State of New Mexico
Energy, Minerals and Natural Resources
Oil Conservation Division
1220 S. St Francis Dr.
Santa Fe, NM 87505

COMMENTS

Action 312322

COMMENTS

Operator: Energy Acumen LLC 10103 Gutierrez Rd NE Albuquerque, NM 87111	OGRID: 373817
	Action Number: 312322
	Action Type: [C-103] Sub. Plugging (C-103P)

COMMENTS

Created By	Comment	Comment Date
plmartinez	DATA ENTRY PM.	2/27/2024

District I
1625 N. French Dr., Hobbs, NM 88240
Phone:(575) 393-6161 Fax:(575) 393-0720
District II
811 S. First St., Artesia, NM 88210
Phone:(575) 748-1283 Fax:(575) 748-9720
District III
1000 Rio Brazos Rd., Aztec, NM 87410
Phone:(505) 334-6178 Fax:(505) 334-6170
District IV
1220 S. St Francis Dr., Santa Fe, NM 87505
Phone:(505) 476-3470 Fax:(505) 476-3462

State of New Mexico
Energy, Minerals and Natural Resources
Oil Conservation Division
1220 S. St Francis Dr.
Santa Fe, NM 87505

CONDITIONS

Action 312322

CONDITIONS

Operator: Energy Acumen LLC 10103 Gutierrez Rd NE Albuquerque, NM 87111	OGRID: 373817
	Action Number: 312322
	Action Type: [C-103] Sub. Plugging (C-103P)

CONDITIONS

Created By	Condition	Condition Date
kfortner	Need C103Q and marker photo to release	2/26/2024