

Office
 District I – (575) 393-6161
 1625 N. French Dr., Hobbs, NM 88240
 District II – (575) 748-1283
 811 S. First St., Artesia, NM 88210
 District III – (505) 334-6178
 1000 Rio Brazos Rd., Aztec, NM 87410
 District IV – (505) 476-3460
 1220 S. St. Francis Dr., Santa Fe, NM
 87505

State of New Mexico
 Energy, Minerals and Natural Resources

Form C-103
 Revised July 18, 2013

OIL CONSERVATION DIVISION
 1220 South St. Francis Dr.
 Santa Fe, NM 87505

WELL API NO. 30-015-22552	
5. Indicate Type of Lease STATE <input type="checkbox"/> FEE <input checked="" type="checkbox"/>	
6. State Oil & Gas Lease No.	
7. Lease Name or Unit Agreement Name Miller Com	
8. Well Number. 001	
9. OGRID Number 269864	
10. Pool name or Wildcat Eunice Monument; Grayburg-San Andres	
11. Elevation (Show whether DR, RKB, RT, GR, etc.) GR 3102'	

SUNDRY NOTICES AND REPORTS ON WELLS

(DO NOT USE THIS FORM FOR PROPOSALS TO DRILL OR TO DEEPEN OR PLUG BACK TO A DIFFERENT RESERVOIR. USE "APPLICATION FOR PERMIT" (FORM C-101) FOR SUCH PROPOSALS.)

1. Type of Well: Oil Well ☒ Gas Well ☐ Other Injection ☐

2. Name of Operator
State of New Mexico formerly Energy Acumen LLC

3. Address of Operator
1625 N. French Drive, Hobbs, N 88240

4. Well Location
 Unit Letter C : 760 feet from the N line and 2080 feet from the W line
 Section 10 Township 23S Range 27E NMPM Eddy County

12. Check Appropriate Box to Indicate Nature of Notice, Report or Other Data

NOTICE OF INTENTION TO:

PERFORM REMEDIAL WORK ☐ PLUG AND ABANDON ☐
 TEMPORARILY ABANDON ☐ CHANGE PLANS ☐
 PULL OR ALTER CASING ☐ MULTIPLE COMPL ☐
 DOWNHOLE COMMINGLE
 CLOSED-LOOP SYSTEM ☐
 OTHER: ☐

SUBSEQUENT REPORT OF:

REMEDIAL WORK ☐ ALTERING CASING ☐
 COMMENCE DRILLING OPNS. ☐ P AND A ☒
 CASING/CEMENT JOB ☐
 OTHER: ☐

13. Describe proposed or completed operations. (Clearly state all pertinent details, and give pertinent dates, including estimated date of starting any proposed work). SEE RULE 19.15.7.14 NMAC. For Multiple Completions: Attach wellbore diagram of proposed completion or recompletion.

12/13/23: MOL. Held JSA. Prepare road and location. Spot equipment onto location. Residence 1/8 mile from well, notified resident of plugging activities. Check pressures on well; 300# Tubing, 300# Casing. Layout relief line to pit and blow down well to 15#. Unable to shut in well due to froze valves, changed out valves and SI. Secure location and SDFD.

12/14/23: Held JSA. Check well pressures; 200# Tubing, 200# Casing, open well to pit, bled down to 50#. Move old tanks on location out of way w/ forklift to spot in Rig and equipment. Shut in well, did not bleed down. Secure location and SDFD. Travel to Hobbs Yard for H2S Training.

12/15/23: Held JSA. Check pressures; 250# Tubing, 250# Casing. Call and wait for flanges, ETA around 4:30 PM. Anchor truck broke down on location, will set anchors on Saturday morning. Shut in well w/ 100# Tubing and 250# Casing. Drain and winterize equipment. Secure well and SDFD.

12/18/23: Held JSA. Check well pressures; 250# Tubing, 250# Casing, open well to pit and attempt to bleed down on casing side. RU pump to tbg, equalize well to pump. Pump 400 bbls of brine water to kill well. Tbg went on vacuum, casing still had pressure. Attempted to blow down well into blowdown tank. RU well service unit. Attempted to put gauge back on wing valve, valve and gauge failed due to bad threads. Bled down and installed 2" ball valve to shut in well. Shut in pressure 150# Casing and 0# on tbg. Drain and winterize equipment. Clean and secure location and SDFD.

12/19/23: Held JSA. Check well pressures; 250# on Casing and 50# on tbg, open well to start bleeding off well to blowdown tank. RU pump to casing and start to pump 10# brine to kill well w/ 250 bbls. Well pressured up to 500#, stopped pumping and opened well to blowdown tank, well bled down to 0# on casing. Pumped 60 bbls down tbg, went on vacuum. Casing started to pressure up again, proceeded to pump 10.5# brine down casing w/ tbg open and still on vacuum. Pumped 300 bbls, well did not pressure up. Divine Wellhead LLC removed 8 bolts on flange 4 bolts on wellhead connection. Well burped small amount of fluid. Proceeded to pump 50 bbls more of 10.5# brine down casing, no pressure on well. Removed remaining 4 bolts from flange, start to pull on tbg w/ casing open to blow down tank. Pulling on tbg lifted flange 6", well burped fluid up casing, crew set flange down on well head and pumped 50 more bbls of 10# brine down casing. Pull on tbg 6", waited 10 min well was dead w/ all valves open. Change slip dies from 2-7/8" to 2-3/8". Well came in w/ fluid and gas. Everyone instructed to run from well; operator and supervisor pulled the kill switch on rig and pump truck. Well ignited. Called 911, had emergency personal arrive. Accounted for all on location. Fire was put out by Carlsbad Fire Department. Called Tiburon Safety Services to monitor well overnight due to being still open and fuming, awaited their arrival. Secure location and SDFD.

1/3/24: Notified NMOCD of resuming plugging operations. MOL w/ Rig #16 from Hobbs Yard. Held JSA. Spot in blowdown tank and waste pit set 80' from well. Check well pressures; 100# on casing, bled down to 0# in 30 min. Monitor gas levels, low LEL no H2S. RU well service unit and plugging equipment. RU workfloor and tbg tongs. Clean around well, check pressures: tubing on a vacuum. RU pump to BOP connection in case need to pump into well. Worked tbg and tried to release packer, did not release. Secured location and SDFD.

1/4/24: Held JSA. Checked well pressures; 50# on casing and tubing on vacuum, bleed down well into blowdown tank. Spoke w/ Donald Christie w/ NMOCD, approved to cut off packer and TOO H w/ production tbg. Wait on WL. Held WL JSA. RU A Plus WL. RIH w/ jet cutter to 9700', line shorted. ROOH. RIH w/ jet cutter to 9700', cut tbg. RD WL. Pump down tubing, pull one stand to confirm tbg cut. Secure location and SDFD.

1/5/24: Held JSA. Check well pressures; 0# tubing and 10# casing, did not dig out BH to check pressure, open well to blowdown tank. ND bleed off pressure. TOO H w/ 2-3/8" prod tbg, 313 jnts. RU JSI WL, RIH w/ GRJB, tagged high @ 6891', await orders, POOH and RD WL. Spoke w/ Donald Christie w/ NMOCD, instructed to TIH to 9846 Open ended and pump 45 sxs, TOO H, WOC and tag plug, approved via email. TIH open ended, tagged 7-5/8" packer @ 9750' (possibly packer that was cut). Secure well and SDFD.

1/8/24: Held JSA. Wait on orders, directed to shut down due to high winds per Sam Stuart w/ A Plus. Secure location and SDFD.

1/9/24: Held JSA. Check well for pressures; 0# tubing, 20# casing, and 0# BH. RU pump to tbg, defrost lines. Pump 40 bbls tbg capacity. Plug #1: Mix and pump 45 sxs Class H cmt @ 14# 1.06 yield from 9700' to 9540' inside casing. TOO H LD 8 jnts and stand back 89 stands. Tbg has cement plug, started to come out wet. Call WL for drain holes. WOC 2 hrs. RU JSI WL, RIH w/ tbg punchers @ 3090', bad run had to do 2 runs, RD WL. TIH and tagged Plug #1 @ 9580'. TOO H 15 stands, install TIW valve shut in tbg. Secure location and SDFD.

1/10/24: Held JSA. Service and start equipment. Check well pressures, no pressure on well. TOO H. Spoke w/ Donald Christie w/ NMOCD, approved to load well and run CBL from TD to surface if able to get down w/ 3.75" GRJB. RU A Plus WL, RIH from surface to 9600' to make sure to get past bad spot @ 6890', RD WL. Call and wait for RTX WL 2.5 hrs. RU RTX WL, RIH and run CBL from 5400' to surface 10-3/4" casing. ROOH adjust centralizer, RIH and log from TD to surface 7-5/8" casing, RD WL. Secure location and SDFD.

1/15/24: Held JSA. Check well pressures, no pressure, open well to blowdown tank. TIH 302 jnts, RU pump to tbg. Load well and establish circulation and circulate clean w/ 400 bbls weighted water. Spoke w/ Gilbert Cordero w/ NMOCD, approved to pump balanced plugs and not WOC if casing pressure tests. Pressure test casing to 500# for 30 min, tested good.

Plug #2: Mix and pump 31 sxs Class H cmt from 9340' to 9240' @ 14# 1.06 yield. LD 10 jnts. RU pump to tbg and establish circulation.

Plug #3: Mix and pump 31 sxs Class H cmt from 9082' to 8982' @ 14# 1.06 yield. LD 12 jnts. RU pump to tbg and establish circulation. Secure location and SDFD.

1/16/24: Held JSA. Service and start equipment. Open up well; no pressure. Establish circulation.

Plug #4: Mix and pump 109 sxs Class H cmt from 5685' to 5360' @ 14# 1.06 yield. LD 109 jnts. RU pump to tbg, establish circulation.

Plug #5: Mix and pump 63 sxs Class C cmt from 2230' to 2130' 1.32 yield. PUH LD 38 jnts, RU pump to tbg.

Plug #6: Mix and pump 63 sxs Class C cmt from 1180' to 1080' # 1.32 yield. TOO H and LD all tbg. RU A Plus WL, RIH and perf @ 399', RD WL. Secure location and SDFD.

1/17/24: Held JSA. Check well pressures, no pressures. Service and start equipment, just start due to cold weather. Establish injection rate, did not circulate out BH. Pumped 180 bbls, well did not pressure up but would get water back if bled down.

Plug #8: Mix and pump 98 sxs Type III cmt from 399' to 299' @ 15.8# 1.32 yield, 35 sxs outside and 63 sxs inside casing. Shut in well and WOC for 5 hrs. Open well to bleed down, no returns. TIH and tagged Plug #8 @ 200'. TOO H and LD tbg. Secure location and SDFD.

1/18/24: Held JSA. Check pressures on well, no pressure. Service and start equipment. Wait on orders. Spoke w/ Donald Christie w/ NMOCD, approved to perf @ spot of tag 200' and attempt to circulate out BH. RU A Plus WL, RIH and perf @ 200', RD WL. Try to establish circulation/injection rate, pumped 50 bbls, well did not circulate, but would return fluid if opened to pit. Spoke w/ Donald Christie w/ NMOCD, approved to pump 98 sxs and shut in well, WOC and tag.

Plug #9: Mix and pump 98 sxs Class C cmt from 200' to 100' @ 14.8# 1.32 yield, 35 sxs outside and 63 sxs inside casing. WOC 4 hrs. TIH and tagged Plug #9 @ 80'. TOO H LD tbg. Secure location and SDFD.

1/19/24: Held JSA. Check well pressures, no pressure. Spoke w/ Donald Christie w/ NMOCD, approved to do bubble test and pump inside plug to surface.

Plug #10: Mix and pump 50 sxs Class C cmt from 80' to surface @ 14.8# 1.32 yield inside casing. LD tbg. RD work floor, ND BOP and RD plugging equipment. RD rig. Prep equipment and clean location. MOL. SDFD.

1/23/24: Travel to location. Held JSA. Dig out, cut off and remove wellhead. TOC @ surface in annulus. Install and weld on Plugged and Abandoned marker @ 32.32494*N -104.18002*W. MOL.

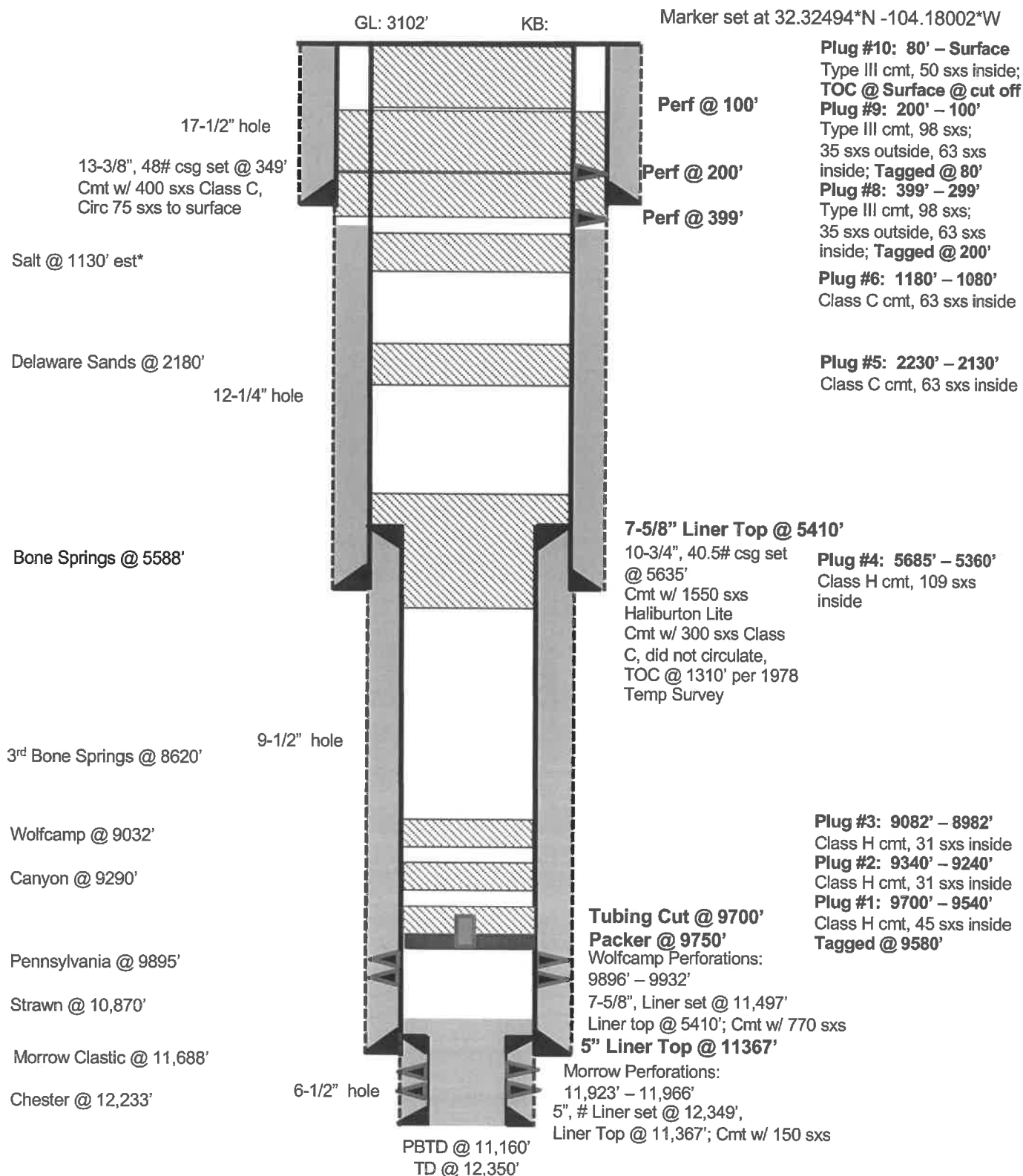
I hereby certify that the information above is true and complete to the best of my knowledge and belief.

SIGNATURE *Neil Lindenberg* TITLE *RA Engineer* DATE *2/22/24*

Type or print name *Neil Lindenberg* E-mail address: *nel@apluswell.com* PHONE: *5054866958*
For State Use Only

APPROVED BY: _____ TITLE _____ DATE _____
Conditions of Approval (if any): _____

Miller Com #1
As Plugged on 1/23/2024
Cass Draw/Wolfcamp
Unit C, 760' FNL & 2080' FWL, Section 10, T23S, R27E
Eddy County, NM, API# 30-015-22552



District I
1625 N. French Dr., Hobbs, NM 88240
Phone:(575) 393-6161 Fax:(575) 393-0720
District II
811 S. First St., Artesia, NM 88210
Phone:(575) 748-1283 Fax:(575) 748-9720
District III
1000 Rio Brazos Rd., Aztec, NM 87410
Phone:(505) 334-6178 Fax:(505) 334-6170
District IV
1220 S. St Francis Dr., Santa Fe, NM 87505
Phone:(505) 476-3470 Fax:(505) 476-3462

State of New Mexico
Energy, Minerals and Natural Resources
Oil Conservation Division
1220 S. St Francis Dr.
Santa Fe, NM 87505

CONDITIONS

Action 316633

CONDITIONS

Operator: A-PLUS WELL SERVICE, INC. P.O. Box 1979 Farmington, NM 87499	OGRID: 370317
	Action Number: 316633
	Action Type: [C-103] Sub. Plugging (C-103P)

CONDITIONS

Created By	Condition	Condition Date
kfortner	Need C103Q and marker photo to release	2/28/2024