

Submit 1 Copy To Appropriate District Office

State of New Mexico
Energy, Minerals and Natural ResourcesForm C-103
Revised July 18, 2013

District I – (575) 393-6161
1625 N. French Dr., Hobbs, NM 88240
District II – (575) 748-1283
811 S. First St., Artesia, NM 88210
District III – (505) 334-6178
1000 Rio Brazos Rd., Aztec, NM 87410
District IV – (505) 476-3460
1220 S. St. Francis Dr., Santa Fe, NM 87505

OIL CONSERVATION DIVISION
1220 South St. Francis Dr.
Santa Fe, NM 87505

WELL API NO. 30-025-28661
5. Indicate Type of Lease STATE <input type="checkbox"/> FEE <input checked="" type="checkbox"/>
6. State Oil & Gas Lease No.
7. Lease Name or Unit Agreement Name Mike
8. Well Number. 001
9. OGRID Number 269864
10. Pool name or Wildcat Eunice Monument; Grayburg-San Andres

SUNDRY NOTICES AND REPORTS ON WELLS
(DO NOT USE THIS FORM FOR PROPOSALS TO DRILL OR TO DEEPEN OR PLUG BACK TO A DIFFERENT RESERVOIR. USE "APPLICATION FOR PERMIT" (FORM C-101) FOR SUCH PROPOSALS.)

1. Type of Well: Oil Well ☒ Gas Well ☐ Other Injection ☐2. Name of Operator
State of New Mexico formerly Energy Acumen LLC3. Address of Operator
1625 N. French Drive, Hobbs, N 882404. Well Location
Unit Letter P : 660 feet from the S line and 660 feet from the E line
Section 32 Township 18S Range 37E NMPM Lea County11. Elevation (Show whether DR, RKB, RT, GR, etc.)
GR 3819'

12. Check Appropriate Box to Indicate Nature of Notice, Report or Other Data

NOTICE OF INTENTION TO:

PERFORM REMEDIAL WORK ☐ PLUG AND ABANDON ☐
TEMPORARILY ABANDON ☐ CHANGE PLANS ☐
PULL OR ALTER CASING ☐ MULTIPLE COMPL ☐
DOWNHOLE COMMINGLE ☐
CLOSED-LOOP SYSTEM ☐
OTHER: ☐

SUBSEQUENT REPORT OF:

REMEDIAL WORK ☐ ALTERING CASING ☐
COMMENCE DRILLING OPNS. ☐ P AND A ☒
CASING/CEMENT JOB ☐ PNR
OTHER: ☐

13. Describe proposed or completed operations. (Clearly state all pertinent details, and give pertinent dates, including estimated date of starting any proposed work). SEE RULE 19.15.7.14 NMAC. For Multiple Completions: Attach wellbore diagram of proposed completion or recompletion.

A-Plus P&A LLC plugged the Mike 001 on 2/4/24 per the below summary.

1/19/24: MOL. Held JSA. Check pressures on well; 50# Tubing, 100# Casing, and 0# BH. RU relief lines and blow down well pressures. Secure location and SDFD.

1/22/24: Held JSA. Check well pressures; 0# Tubing, 10# Casing, and 0# BH, open well to pit. Rig up rig and plugging equipment. Change over to rod equipment and unseat rod pump. RU rod stripper and workfloor. TOO H and LD 256 rods. Change over to 2-3/8" tubing equipment. RD rod stripper and workfloor. ND wellhead and NU and test BOP. TOO H and LD production tubing, 124 joints. Secure well and SDFD.

1/23/24: Held JSA. Check pressures and open well to pit; no pressure. RU A Plus WL, RIH w/ GRJB to 3880', TOO H and LD GRJB. RIH w/ WL set CIBP and set @ 3874', POOH and RD WL. Load hole for CBL. RU JSI WL, RIH and log from 3874' to 2200', well kept losing fluid and drop down to 2200', unable to log higher. RD JSI WL. Called into Donald Christie w/ NMOCD, directed to start pumping plugs until hole was plugged or well loads and doesn't lose fluid. TIH w/ 122 jnts of 2-3/8" work string to CIBP @ 3874'. RU pump to tubing. Secure well and SDFD.

1/24/24: Held JSA. Check well pressures and open well to pit; no pressures. Spoke w/ Donald Christie w/ NMOCD, approved to combine Plugs #1 and #2 and #3 and #4 into big plugs due to close spacing.

Plug #1-2: Mix and pump 53 sxs of Class C cmt from 3874' to 3200' @ 14.8# 1.32 yield inside casing. TOO H and LD 16 jnts, stand back 9 stands. WOC for 4 hrs. TIH and tag Plug #1-2 @ 3150'. PUH to 3062'.

Plug #3-4: Mix and pump 53 sxs of Class C cmt from 3062' to 2692' @ 14.8# 1.32 yield inside casing. TOO H and LD 16 jnts, stand back the rest. WOC plug overnight. Secure well and SDFD.

1/25/24: Held JSA. Check well pressures and open to pit; no pressures. TIH and tagged Plug #3-4 @ 2550'. RU pump to tbg and establish circulation, circulate well clean. TOOH and stand back 7 stands, LD the rest. RU JSI WL and RIH and log well from 2550' to surface, RD WL. TIH to 457' and RU pump to tbg.

Plug #5: Mix and pump 25 sxs Class C cmt from 457' to 357' @ 14.8# 1.32 yield. TOOH and WOC for 3 hours, TIH and tagged Plug #5 @ 210'. PUH to 100', RU pump to tbg and established circulation.

Plug #6: Mix and pumped 15 sxs Class C cmt from 100' to surface @ 14.8# 1.32 yield. TOOH and LD all tbg. Secure well and SDFD.

1/26/24: Held JSA. Check pressures on well, no pressure. RD Plugged equipment and Rig. MOL. SDFN.

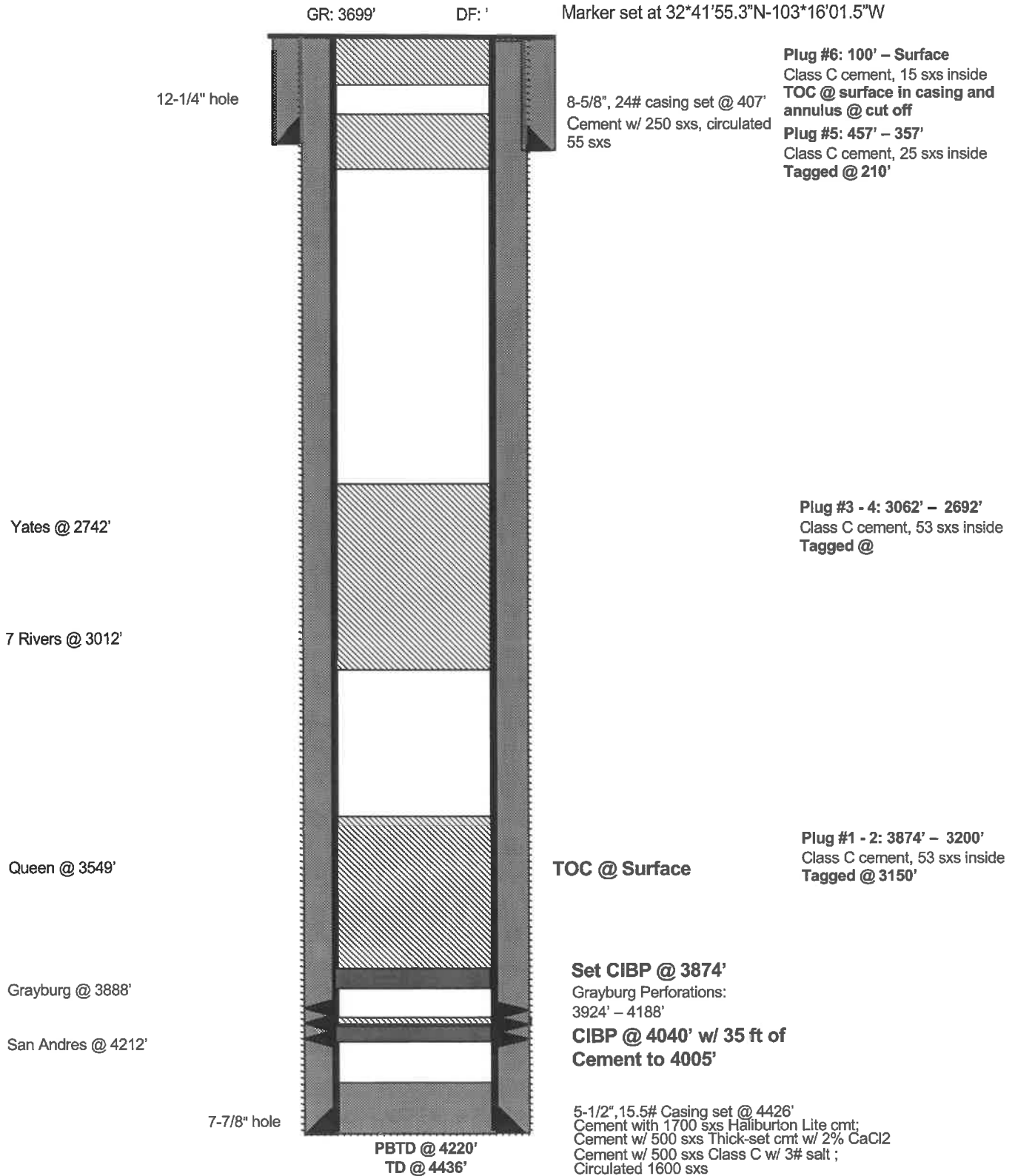
2/4/24: Travel to location. Held JSA. Dig out, cut off and remove wellhead. TOC @ surface in annulus and casing. Surface weld and install Plug and Abandon Marker @ 32*41'55.3"N -103*16'01.5"W. MOL.

I hereby certify that the information above is true and complete to the best of my knowledge and belief.

SIGNATURE *Neil Lindemeyer* TITLE *PIA Engineer* DATE *2/12/24*
Type or print name *Neil Lindemeyer* E-mail address: *neil@apluswell.com* PHONE: *5054865958*
For State Use On *Kerry Fortner*
APPROVED BY: *Kerry Fortner* TITLE *Compliance Officer A* DATE *2/28/24*
Conditions of Approval (if any):

Approved for plugging of well bore only. Liability under bond is retained pending receipt of C-103 (Subsequent Report of Well Plugging) which may be found at OCD Web Page under Forms,

Mike 001
As Plugged on 2/4/2024
 Eunice Monument Grayburg San Andres
 Unit P, 660' FSL & 660' FEL, Section 32, T18S, R37E
 Lea County, NM, API #30-025-28661



District I
1625 N. French Dr., Hobbs, NM 88240
Phone:(575) 393-6161 Fax:(575) 393-0720
District II
811 S. First St., Artesia, NM 88210
Phone:(575) 748-1283 Fax:(575) 748-9720
District III
1000 Rio Brazos Rd., Aztec, NM 87410
Phone:(505) 334-6178 Fax:(505) 334-6170
District IV
1220 S. St Francis Dr., Santa Fe, NM 87505
Phone:(505) 476-3470 Fax:(505) 476-3462

State of New Mexico
Energy, Minerals and Natural Resources
Oil Conservation Division
1220 S. St Francis Dr.
Santa Fe, NM 87505

COMMENTS

Action 313536

COMMENTS

Operator: A-PLUS WELL SERVICE, INC. P.O. Box 1979 Farmington, NM 87499	OGRID: 370317
	Action Number: 313536
	Action Type: [C-103] Sub. Plugging (C-103P)

COMMENTS

Created By	Comment	Comment Date
plmartinez	DATA ENTRY PM.	2/28/2024

District I
1625 N. French Dr., Hobbs, NM 88240
Phone:(575) 393-6161 Fax:(575) 393-0720
District II
811 S. First St., Artesia, NM 88210
Phone:(575) 748-1283 Fax:(575) 748-9720
District III
1000 Rio Brazos Rd., Aztec, NM 87410
Phone:(505) 334-6178 Fax:(505) 334-6170
District IV
1220 S. St Francis Dr., Santa Fe, NM 87505
Phone:(505) 476-3470 Fax:(505) 476-3462

State of New Mexico
Energy, Minerals and Natural Resources
Oil Conservation Division
1220 S. St Francis Dr.
Santa Fe, NM 87505

CONDITIONS

Action 313536

CONDITIONS

Operator: A-PLUS WELL SERVICE, INC. P.O. Box 1979 Farmington, NM 87499	OGRID: 370317
	Action Number: 313536
	Action Type: [C-103] Sub. Plugging (C-103P)

CONDITIONS

Created By	Condition	Condition Date
kfortner	Need C103Q and marker photo to release	2/28/2024