

Submit 1 Copy To Appropriate District

Office  
 District I – (575) 393-6161  
 1625 N. French Dr., Hobbs, NM 88240  
 District II – (575) 748-1283  
 811 S. First St., Artesia, NM 88210  
 District III – (505) 334-6178  
 1000 Rio Brazos Rd., Aztec, NM 87410  
 District IV – (505) 476-3460  
 1220 S. St. Francis Dr., Santa Fe, NM  
 87505

State of New Mexico  
 Energy, Minerals and Natural Resources

Form C-103  
 Revised July 18, 2013

OIL CONSERVATION DIVISION  
 1220 South St. Francis Dr.  
 Santa Fe, NM 87505

SUNDRY NOTICES AND REPORTS ON WELLS (DO NOT USE THIS FORM FOR PROPOSALS TO DRILL OR TO DEEPEN OR PLUG BACK TO A DIFFERENT RESERVOIR. USE "APPLICATION FOR PERMIT" (FORM C-101) FOR SUCH PROPOSALS.)		WELL API NO. 30-045-11081
1. Type of Well: Oil Well <input type="checkbox"/> Gas Well <input checked="" type="checkbox"/> Other		5. Indicate Type of Lease STATE <input type="checkbox"/> FEE <input checked="" type="checkbox"/>
2. Name of Operator HILCORP ENERGY COMPANY		6. State Oil & Gas Lease No.
3. Address of Operator 382 Road 3100, Aztec, NM 87410		7. Lease Name or Unit Agreement Name LANDAUER
4. Well Location Unit Letter <u>H</u> : <u>1430</u> feet from the <u>North</u> line and <u>1120</u> feet from the <u>East</u> line Section <u>3</u> Township <u>31N</u> Range <u>13W</u> NMPM County <u>San Juan</u>		8. Well Number <u>1</u>
11. Elevation (Show whether DR, RKB, RT, GR, etc.) 5772'		9. OGRID Number 372171
		10. Pool name or Wildcat Basin Dakota

12. Check Appropriate Box to Indicate Nature of Notice, Report or Other Data

NOTICE OF INTENTION TO:		SUBSEQUENT REPORT OF:	
PERFORM REMEDIAL WORK <input type="checkbox"/>	PLUG AND ABANDON <input type="checkbox"/>	REMEDIAL WORK <input type="checkbox"/>	ALTERING CASING <input type="checkbox"/>
TEMPORARILY ABANDON <input type="checkbox"/>	CHANGE PLANS <input type="checkbox"/>	COMMENCE DRILLING OPNS. <input type="checkbox"/>	P AND A <input checked="" type="checkbox"/>
PULL OR ALTER CASING <input type="checkbox"/>	MULTIPLE COMPL <input type="checkbox"/>	CASING/CEMENT JOB <input type="checkbox"/>	
DOWNHOLE COMMINGLE <input type="checkbox"/>			
CLOSED-LOOP SYSTEM <input type="checkbox"/>			
OTHER: <input type="checkbox"/>		OTHER: <input type="checkbox"/>	

13. Describe proposed or completed operations. (Clearly state all pertinent details, and give pertinent dates, including estimated date of starting any proposed work). SEE RULE 19.15.7.14 NMAC. For Multiple Completions: Attach wellbore diagram of proposed completion or recompletion.

Hilcorp Energy Company P&A'd the subject well on 2/13/2024 per the attached summary and wellbore schematic.

I hereby certify that the information above is true and complete to the best of my knowledge and belief.

SIGNATURE Tammy Jones TITLE Operations/Regulatory Technician – Sr. DATE 2/14/2024

Type or print name Tammy Jones E-mail address: tajones@hilcorp.com PHONE: (505) 324-5185

**For State Use Only**

APPROVED BY: \_\_\_\_\_ TITLE \_\_\_\_\_ DATE \_\_\_\_\_  
 Conditions of Approval (if any): \_\_\_\_\_

LANDAUER 1

30.045.11081

PLUG &amp; ABANDONMENT

**2/7/2024** – MIRU. CK PRESSURES. SITP = 0 PSI, SICP = 0 PSI, SIICP = 0 PSI, SIBHP = 0 PSI. B/D WELL, 0 MINS. ND WH. NU BOP, PRESSURE TEST & FUNCTION TEST BOP'S. RU RIG FLOOR. LW WITH 39 BBLS OF FW TO SURFACE. RU WIRELINE, **RUN CBL FROM 6575' TO SURFACE**. POOH R/D WIRELINE. RU CEMENTERS, PT PUMP & LINES. LW & PT TO 580 PSI. GOOD TEST. DRAIN & WINTERIZE EQUIPMENT. SISW. SDFN.

**2/8/2024** – CK PRESSURES. SITP = 0 PSI, SICP = 0 PSI, SIICP = 0 PSI, SIBHP = 0 PSI. B/D WELL, 0 MINS. MU TAG SUB, PU 210 JTS OF 2.375 TBG TO 6591' & TAG CIBP @ 6591'. LW 1 BBL, PUMP 5 BBLS & PT TO 580 PSI FOR 30 MINS. **(NMOCD REP GOOD WITH TEST) PUMP CEMENT PLUG #1 (CIBP)** 20 SX 4 BBL, 1.15, 15.8#, 5 GAL/SX. TOC @ 6425', BOC @ 6591'. LD 24 JTS. **PUMP CEMENT PLUG #2 (GALLUP TOP)** 18 SX 3.6 BBL, 1.15, 15.8#, 5 GAL/SX. TOC @ 5703', BOC @ 5853'. LD 32 JTS. **PUMP CEMENT PLUG #3 (MANCOS TOP, DV TOOL)** 20 SX 4.8 BBL, 1.37, 14.8#, 6.64 GAL/SX. TOC @ 4660', BOC @ 4855'. LD 38 JTS. **PUMP CEMENT PLUG #4 (MV, CLIFF HOUSE)** 15 SX 3.6 BBL, 1.37, 14.8#, 6.64 GAL/SX. TOC @ 3500', BOC @ 3650'. LD 16 JTS. TOOH 50 STDS OF 2.375" TBG. DRAIN & WINTERIZE EQUIPMENT. SISW, DEBRIEF CREW, SDFN. **(NMOCD REP. ANTHONY BUNNY ON LOCATION)**

**2/9/2024** – CK PRESSURES. SITP = 0 PSI, SICP = 0 PSI, SIICP = 0 PSI, SIBHP = 0 PSI. B/D WELL, 0 MINS. RU WIRELINE, RIH & PERF SQUEEZES HOLES @ 3240' (CHACRA TOP). POOH & RD WIRELINE. LW 6 BBLS, INJECTION RATE @ 2.3 BBLS/MIN, 600 PSI. MU 5.5" CICR, TIH WITH 50 STDS OF 2.375" TBG TO 3190'. SET CICR @ 3190'. **PUMP CEMENT PLUG #5 (CHACRA TOP)** 41 SX 10 BBL, 1.37, 14.8#, 6.64 GAL/SX. TOC @ 3090', BOC @ 3240'. 31 SXS UNDER CICR & 10 SXS ON TOP OF CICR. LD 3 JTS. TOOH 49 STDS OF 2.375" TBG & LD STINGER. WOC. TIH 40 STDS & TAG CEMENT PLUG #5 @ 3078'. LD 36 JTS OF 2.375" TBG TO 1989'. TOOH 31 STDS OF 2.375" TBG. RU WIRELINE, RIH & PERF SQUEEZES HOLES @ 2050' (PC TOP). POOH & RD WIRELINE. LW 9 BBLS, INJECTION RATE @ 2.3 BBLS/MIN, 200 PSI. MU 5.5" CICR & TIH 31 STDS OF 2.375" TBG TO 2000'. SET CICR @ 2000'. NO INJECTION RATE PRESSURE UP TO 1000 PSI. **(NMOCD APPROVED TO SET A 150' PLUG ON TOP OF CICR) PUMP CEMENT PLUG #6 (PC TOP)** 18 SX 3.6 BBL, 1.15, 15.8#, 5 GAL/SX. TOC @ 1850', BOC @ 2000'. LD 5 JTS. TOOH 29 STDS OF 2.375" TBG. WOC PLUG #6 OVER THE WEEKEND. DRAIN & WINTERIZE EQUIPMENT. SISW. DEBRIEF CREW, SDFN. **(NMOCD REP. ANTHONY BUNNY NOT ON LOCATION, SENDING OPERATION UPDATES BY TEXT & PHONE)**

**2/12/2024** – CK PRESSURES. SITP = 0 PSI, SICP = 0 PSI, SIICP = 0 PSI, SIBHP = 0 PSI. B/D WELL, 0 MINS. MU TAG SUB, TIH 29 STDS OF 2.375" TBG & TAG CEMENT PLUG #6 @ 1867'. LD 12 JTS. TOOH 23 STDS OF 2.375" TBG. RU WIRELINE, RIH & PERF SQUEEZES HOLES @ 1522' (FRD TOP). POOH & RD WIRELINE. LW 9 BBLS, INJECTION RATE @ 2.1 BBLS/MIN, 350 PSI. MU 5.5" CICR & TIH 23 STDS TO 1472'. SET CICR @ 1472'. **PUMP CEMENT PLUG #7 (FRD TOP)** 49 SX 10 BBL, 1.15, 15.8#, 5 GAL/SX. TOC @ 1372', BOC @ 1522'. 31 SXS UNDER CICR & 18 SXS ON TOP OF CICR. TOOH 21 STDS OF 2.375" TBG, LD STINGER & WOC. MU TAG SUB TIH & TAG CEMENT PLUG #7 @ 1370'. LD 14 JTS. TOOH 15 STDS OF 2.375" TBG. RU WIRELINE, RIH & PERF SQUEEZES HOLES @ 1060' (KRD & OJO TOPS). POOH & RD WIRELINE. LW 9 BBLS, INJECTION RATE @ 2.5 BBLS/MIN, 450 PSI. MU 5.5" CICR, TIH 15 STDS TO 1010'. SET CICR @ 1010'. **PUMP CEMENT PLUG #8 (KRD, OJO TOP)** 65 SX 13.3 BBL, 1.15, 15.8#, 5 GAL/SX. TOC @ 846', BOC @ 1060'. 46 SXS UNDER CICR & 19 SXS ON TOP OF CICR. LD 6 JTS. TOOH 13 STDS OF 2.375" TBG & WOC OVERNIGHT. DRAIN & WINTERIZE EQUIPMENT. SISW, DEBRIEF CREW, SDFN. **(NMOCD REP. ANTHONY BUNNY ON LOCATION)**

LANDAUER 1

30.045.11081

PLUG &amp; ABANDONMENT

**2/13/2024** – CK PRESSURES. SITP = 0 PSI, SICP = 0 PSI, SIICP = 0 PSI, SIBHP = 0 PSI. B/D WELL, 0 MINS. TIH 13 STDS OF 2.375" TBG & TAG CEMENT PLUG # 8 @ 852'. LD 27 JTS. RU WIRELINE, RIH & PERF SQUEEZES HOLES @ 242' (SURFACE). POOH & RD WIRELINE. LW 10 BBLS, INJECTION RATE @ 2.4 BBLS/MIN, 195 PSI. RD RIG FLOOR. ND BOP & NU WH. PREP TO PUMP CEMENT TO SURFACE. **PUMP CEMENT PLUG #8 (SURFACE)** 114 SXS 23.3 BBL, 1.15, 15.8#, 5 GAL/SX. TOC @ 0', BOC @ 242'. CEMENT CREW STAYED ON LOCATION FOR WOC & WH CUT-OFF. WHILE RIG MOVED OFF LOCATION. CUT OFF WH (TOC IN 5.5" PROD 0' & 10-3/4" SURFACE 0') WELD ON P&A MARKER. FILL CASING AND CELLAR WITH 25 SXS CEMENT. **(RIG RELEASED @ 12:30 2/13/24)**

**(NMOCD REP. ANTHONY BUNNY ON LOCATION)**

**Tammy Jones**

**From:** Kuehling, Monica, EMNRD <monica.kuehling@emnrd.nm.gov>  
**Sent:** Thursday, February 8, 2024 7:56 AM  
**To:** John LaMond  
**Cc:** Farmington Regulatory Techs; Brice Clyde - (C); Clay Padgett; Lee Murphy; Max Weaver; Rustin Mikeska  
**Subject:** RE: [EXTERNAL] CBL Submission & P&A Revision for Hilcorp's LANDAUER 1 (API # 3004511081)

**CAUTION:** External sender. DO NOT open links or attachments from UNKNOWN senders.

NMOCD approves below

Thank you

Monica Kuehling  
Compliance Officer Supervisor  
Deputy Oil and Gas Inspector  
New Mexico Oil Conservation Division  
North District  
Office Phone: 505-334-6178 ext. 123  
Cell Phone: 505-320-0243  
Email - monica.kuehling@emnrd.nm.gov

---

**From:** John LaMond <jlamond@hilcorp.com>  
**Sent:** Wednesday, February 7, 2024 6:19 PM  
**To:** Kuehling, Monica, EMNRD <monica.kuehling@emnrd.nm.gov>  
**Cc:** Farmington Regulatory Techs <FarmingtonRegulatoryTechs@hilcorp.com>; Brice Clyde - (C) <Brice.Clyde@hilcorp.com>; Clay Padgett <cpadgett@hilcorp.com>; John LaMond <jlamond@hilcorp.com>; Lee Murphy <lmurphy@hilcorp.com>; Max Weaver <mweaver@hilcorp.com>; Rustin Mikeska <rmikeska@hilcorp.com>  
**Subject:** [EXTERNAL] CBL Submission & P&A Revision for Hilcorp's LANDAUER 1 (API # 3004511081)

**CAUTION:** This email originated outside of our organization. Exercise caution prior to clicking on links or opening attachments.

Good evening Monica,

Attached is the CBL that was run today (2/7/2024) on the LANDAUER 1 (API # 3004511081). The CBL shows TOC @ ~3,544'.

Based on the results of the CBL, Hilcorp requests the following adjustments to the P&A procedure:

- Pressure test 5.5" casing.
- PLUG #1 (DK Perfs @ 6,628')
  - Pump a 150' inside plug (18sx Class G, 1.15 yield) on top of the CIBP @ 6,575'. Est. TOC @ 6,425' & est BOC @ 6,575'
  - No WOC or tag if original pressure test is good
- PLUG #2 (Gallup @ 5,803')
  - Pump a 150' inside plug (18sx Class G, 1.15 yield). Est. TOC @ 5,703' & est BOC @ 5,853'
  - No WOC or tag if original pressure test is good

- PLUG #3 (Mancos @ 4,760' & DV Tool @ 4,805')
  - Pump a 195' inside plug (20sx Class III, 1.37 yield). Est. TOC @ 4,660' & est BOC @ 4,855'
  - No WOC or tag if original pressure test is good
- PLUG #4 (MV Top @ 3,600'):
  - Pump a 150' inside plug (15sx Class III, 1.37 yield). Est. TOC @ 3,500' & est BOC @ 3,650'
  - No WOC or tag if original pressure test is good
- PLUG #5, PLUG #6, PLUG #7, PLUG #8, PLUG #9:
  - Pump as described in the approved NOI

Please let me know if you have any questions or concerns with this plan.

Thanks,

**John LaMond**

Operations Engineer – Technical Services

Hilcorp Energy Company

1111 Travis

Houston, TX 77002

346-237-2210 (Office)

832-754-9692 (Cell)

[jlamond@hilcorp.com](mailto:jlamond@hilcorp.com)

---

The information contained in this email message is confidential and may be legally privileged and is intended only for the use of the individual or entity named above. If you are not an intended recipient or if you have received this message in error, you are hereby notified that any dissemination, distribution, or copy of this email is strictly prohibited. If you have received this email in error, please immediately notify us by return email or telephone if the sender's phone number is listed above, then promptly and permanently delete this message.

While all reasonable care has been taken to avoid the transmission of viruses, it is the responsibility of the recipient to ensure that the onward transmission, opening, or use of this message and any attachments will not adversely affect its systems or data. No responsibility is accepted by the company in this regard and the recipient should carry out such virus and other checks as it considers appropriate.

---

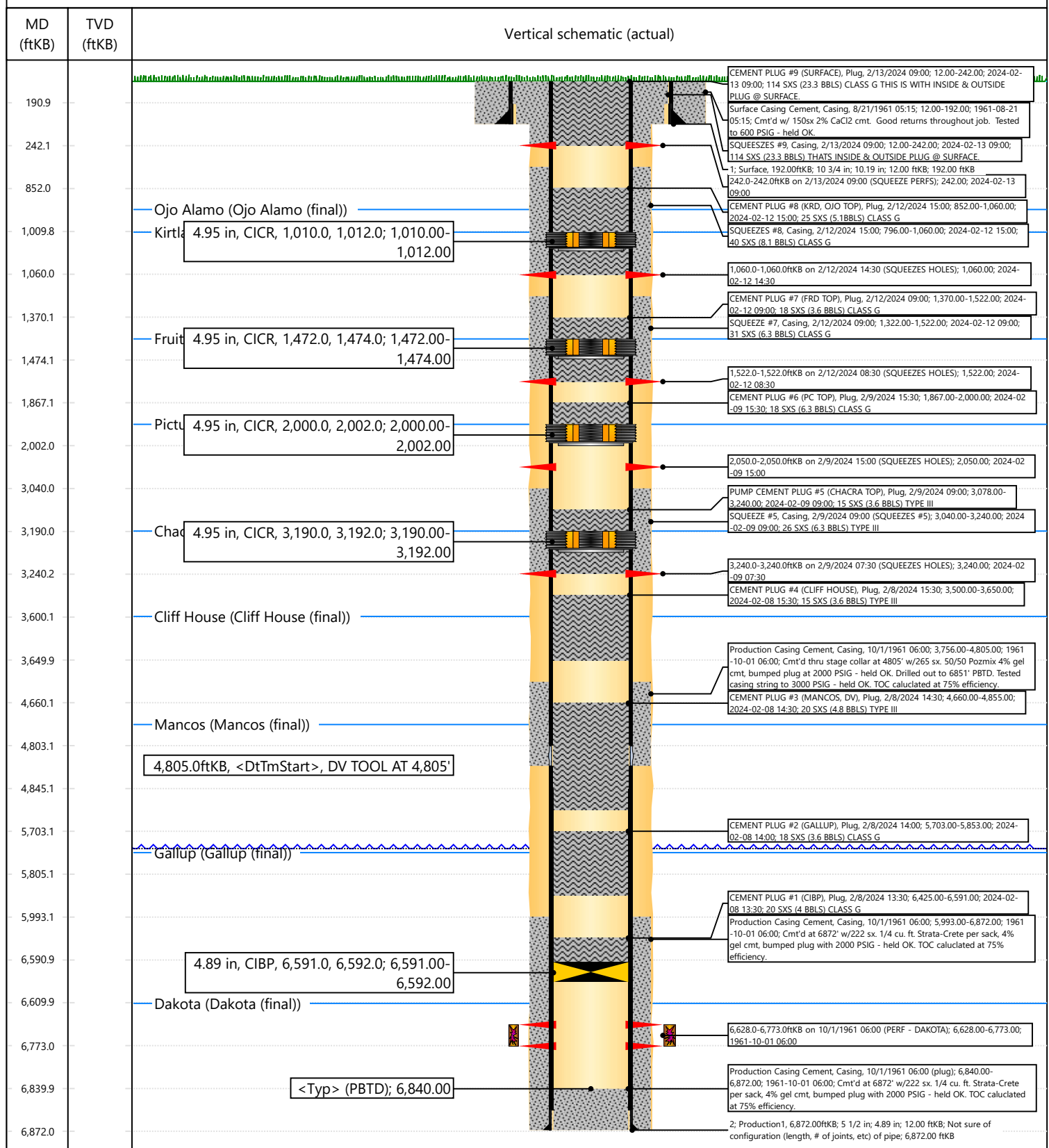


## Current Schematic - Version 3

Well Name: LANDAUER #1

API / UWI 3004511081	Surface Legal Location H-3-31N-13W	Field Name BASIN	Route 0211	State/Province NEW MEXICO	Well Configuration Type Vertical
Ground Elevation (ft) 5,772.00	Original KB/RT Elevation (ft) 5,784.00	RKB to GL (ft) 12.00	KB-Casing Flange Distance (ft)	KB-Tubing Hanger Distance (ft)	

## Original Hole [Vertical]



**District I**  
1625 N. French Dr., Hobbs, NM 88240  
Phone:(575) 393-6161 Fax:(575) 393-0720  
**District II**  
811 S. First St., Artesia, NM 88210  
Phone:(575) 748-1283 Fax:(575) 748-9720  
**District III**  
1000 Rio Brazos Rd., Aztec, NM 87410  
Phone:(505) 334-6178 Fax:(505) 334-6170  
**District IV**  
1220 S. St Francis Dr., Santa Fe, NM 87505  
Phone:(505) 476-3470 Fax:(505) 476-3462

**State of New Mexico**  
**Energy, Minerals and Natural Resources**  
**Oil Conservation Division**  
**1220 S. St Francis Dr.**  
**Santa Fe, NM 87505**

CONDITIONS

Action 314239

CONDITIONS

Operator: HILCORP ENERGY COMPANY 1111 Travis Street Houston, TX 77002	OGRID: 372171
	Action Number: 314239
	Action Type: [C-103] Sub. Plugging (C-103P)

CONDITIONS

Created By	Condition	Condition Date
mkuehling	well plugged 2/13/2024	3/4/2024