

Submit Copy To Appropriate District

Office
 District I – (575) 393-6161
 1625 N. French Dr., Hobbs, NM 88240
 District II – (575) 748-1283
 811 S. First St., Artesia, NM 88210
 District III – (505) 334-6178
 1000 Rio Brazos Rd., Aztec, NM 87410
 District IV – (505) 476-3460
 1220 S. St. Francis Dr., Santa Fe, NM
 87505

State of New Mexico
 Energy, Minerals and Natural Resources

Form C-103
 Revised July 18, 2013

OIL CONSERVATION DIVISION
 1220 South St. Francis Dr.
 Santa Fe, NM 87505

| |
|-----------------------------------------------------------------------------------------------------|
| WELL API NO. 30-045-21143 |
| 5. Indicate Type of Lease STATE <input type="checkbox"/> FEE <input checked="" type="checkbox"/> |
| 6. State Oil & Gas Lease No. FEE |
| 7. Lease Name or Unit Agreement Name Larcher |
| 8. Well Number 2 |
| 9. OGRID Number 372171 |
| 10. Pool name or Wildcat Pictured Cliffs |

| | |
|-------------------------------------------------------------------------------------------------------------------------------------------------------------------------------------------------------------------------------|--|
| SUNDRY NOTICES AND REPORTS ON WELLS (DO NOT USE THIS FORM FOR PROPOSALS TO DRILL OR TO DEEPEN OR PLUG BACK TO A DIFFERENT RESERVOIR. USE "APPLICATION FOR PERMIT" (FORM C-101) FOR SUCH PROPOSALS.) | |
| 1. Type of Well: Oil Well <input type="checkbox"/> Gas Well <input checked="" type="checkbox"/> Other | |
| 2. Name of Operator HILCORP ENERGY COMPANY | |
| 3. Address of Operator 382 Road 3100, Aztec, NM 87410 | |
| 4. Well Location Unit Letter <u>G</u> : <u>1720'</u> feet from the <u>North</u> line and <u>1725'</u> feet from the <u>East</u> line Section <u>13</u> Township <u>31N</u> Range <u>11W</u> NMPM County <u>San Juan</u> | |
| 11. Elevation (Show whether DR, RKB, RT, GR, etc.) 5860' GL | |

12. Check Appropriate Box to Indicate Nature of Notice, Report or Other Data

NOTICE OF INTENTION TO:

PERFORM REMEDIAL WORK ☐ PLUG AND ABANDON ☐
 TEMPORARILY ABANDON ☐ CHANGE PLANS ☐
 PULL OR ALTER CASING ☐ MULTIPLE COMPL ☐
 DOWNHOLE COMMINGLE ☐
 CLOSED-LOOP SYSTEM ☐
 OTHER: ☐

SUBSEQUENT REPORT OF:

REMEDIAL WORK ☐ ALTERING CASING ☐
 COMMENCE DRILLING OPNS. ☐ P AND A ☒
 CASING/CEMENT JOB ☐
 OTHER: ☐

13. Describe proposed or completed operations. (Clearly state all pertinent details, and give pertinent dates, including estimated date of starting any proposed work). SEE RULE 19.15.7.14 NMAC. For Multiple Completions: Attach wellbore diagram of proposed completion or recompletion.

Hilcorp Energy Company plugged and abandoned the subject well on 1/19/2024 per the attached report.

Spud Date:

Rig Release Date:

I hereby certify that the information above is true and complete to the best of my knowledge and belief.

SIGNATURE Priscilla Shorty TITLE Operations/Regulatory Technician – Sr. DATE 1/22/2024

Type or print name Priscilla Shorty E-mail address: pshorty@hilcorp.com PHONE: (505) 324-5188

For State Use Only

APPROVED BY: _____ TITLE _____ DATE _____

Conditions of Approval (if any):

LARCHER 2**30.045.21143****PLUG & ABANDON**

4/24/2023 –MIRU. SIBHP – 0 PSI, SICP – 50 PSI, SITP – 50 PSI. BDW. ND WH, NU BOP. PT BOP, Good test. POOH w/ tbg. TIH w/ scraper to 2540'. TOO H w/ scraper. SIW. SDFN.

4/25/2023 - SIBHP – 0 PSI, SICP – 50 PSI, SITP – 0 PSI. BDW. TIH w/ CICR and set @ 2527'. PT csg to 600 psi. Good test. **Clarence Smith, NMOCD on location to witness cement operations.**

Plug 1 (2377' – 2527' Pictured Cliffs) Mix and pump: 11 sx Type II/V, 15 PPG, 1.29 Yield. LD tbg

Plug 2 (2053' – 2203' Fruitland Coal) Mix and pump: 11 sx Type II/V, 15 PPG, 1.29 Yield. LD tbg.

Plug 3 (1619' – 1852' Kirtland/Ojo) Mix and pump: 17 sx Type II/V, 15 PPG, 1.29 Yield. LD tbg.

Plug 4 (234' – Surface) Mix and pump: 16 sx Type II/V, 15 PPG, 1.29 Yield. LD tbg. WOC. ND BOP. Cut off WH. Install dry hole marker. Top of cellar & csg w/ 14 sx cmt. RDMO.

5/3/2023 - Monica Kuehling, NMOCD, rejected the P&A report above due to the missing Kirtland and Ojo plug as requested in the COAs. Hilcorp Energy was instructed to correct the P&A.

1/11/2024 - CF&M SERVICES DUG CMT OUT OF CELLAR, WELDED 4-1/2" CSG & 8-5/8" SURFACE CSG BACK ON, BIG RED RU 8-5/8" WH.

1/12/2024 – MIRU. CHECK PSI ON WELL SITP 0#, SICP 0#, SIICP NA, BH 0#, BDW 0 MIN. ND WH, NU BOP, ADD ANNULAR TO BOP. WELLCHECK DID A BOP TEST, ANNULAR TEST, & WELL HEAD TEST. LOW TEST 250 PSI & HIGH TEST 1500 PSI. WH NOT HOLDING 1500 PSI. CHECK FOR LEAKS NONE @ SURFACE. RE-TEST ON MONDAY. RU RIG FLOOR. RU PUMP & PIT. PREP SWIVEL & EQUIP TO DRILL OUT SURFACE PLUG. SDFN.

1/13/2024 - CHECK PSI ON WELL SITP 0#, SICP 0#, SIICP NA, BH 0#, BDW 0 MIN. RD RIG FLOOR. PREP TO DIG OUT CELLAR. DUG OUT CELLAR WITH BACKHOE DOWN TO WHERE CSG WAS WELDED BACK TOGETHER TO GROUND LEVEL. RU WELLCHECK. PT CSG & WH TO 250 PSI LOWSIDE & 1500 PSI HIGH SIDE. CHECK FOR LEAKS AROUND WELDED AREAS & WH. STILL BLEEDING DOWN PSI, CHECK 4-1/2" CSG SLIPS & H-PLATE LEAKING BY. WO ORDERS TO PROCEED. DECIDED TO WELD H-PLATE TO WH. THEN PT 8-5/8" & 4-1/2" CSG TO SEE WHERE LOSING PRESSURE. RU WELLCHECK, PT 4-1/2" CSG TO 1500 PSI & FAIL. PT 8-5/8" & FAILED TEST. WO ORDERS TO PROCEED. GOT APPROVALS FROM ENGINEER & OFFICE TO PROCEED WITH DRILLING OUT SURFACE PLUG ON 1/15/2024. NU BACK UP BOP, PRESSURE TEST & FUNCTION TEST BOPS, RU RIG FLOOR. SDWE.

1/15/2024 - CHECK PSI ON WELL SITP 0#, SICP 0#, SIICP NA, BH 0#, BDW 0 MIN. TALLY & STRAP COLLARS. RU SWIVEL, MU 3.5" COLLAR & BHA. TAG CMT @ 7'. START DRILLING OUT CMT. RIG PUMP WENT DOWN. RU NEW PUMP & PUT PUMP ONLINE. DRILL OUT 45' OF CMT. CIRC WELL CLEAN. SDFN.

1/16/2024 - CHECK PSI ON WELL SITP 0#, SICP 0#, SIICP NA, BH 0#, BDW 0 MIN. PU COLLAR & BHA, RIH & SWIVEL UP. TAG CMT @ 45'. START DRILLING OUT CMT. RIG SHUT DOWN TO GET FIXED. PUT PUMP BACK ONLINE SWIVEL UP & BACK TO DRILLING OUT CMT. RD SWIVEL, TOTAL OF 35' DRILLED OUT. SDFN.

1/17/2024 - CHECK PSI ON WELL SITP 0#, SICP 0#, SIICP NA, BH 0#, BDW 0 MIN. PU COLLARS & BHA, RIH & SWIVEL UP. TAG CMT @ 80'. START DRILLING OUT CMT. CHANGE OUT BLADE BIT, HAD SIGNS OF WEAR ON FIRST BIT. TIH, TAG CMT, START DRILLING. DRILLED OUT 110' TOTAL, STILL 45' OF CMT TO DRILL OUT. TOO H, INSPECT BIT, STILL GOOD. SDFN.

LARCHER 2

30.045.21143

PLUG & ABANDON

1/18/2024 - CHECK PSI ON WELL SITP 0#, SICP 0#, SIICP NA, BH 0#, BDW 0 MIN. TIH W/ COLLARS, TAG CMT @ 190'. START DRILLING OUT CMT. DRILL THROUGH PLUG @ 230'. CIRC WELL CLEAN. TIH TO 900', MADE SURE 4.5" CSG IS CLEAR. TOOH. MU TAG SUB & TIH TO 900'. LW 3 BBLs, PUMP 10 BBLs. PT CSG TO 600 PSI & FAILED. **CORRECTED CEMENT PLUG #3 (KRD, OJO TOPS) 20 SX 4.7 BBL, 1.37, 14.8#, 6.64 GAL/SX BOC @ 900'. CLARENCE SMITH, NMOCD, WAS ON LOCATION. TOOH, WOC. MU TAG SUB, TIH & TAG CORRECTED CEMENT PLUG #3 @ 719'. CLARENCE SMITH, NMOCD, APPROVED THE TOC @ 719'. REPUMP CEMENT PLUG #4 (SURFACE) 16 SX 3.9 BBL, 1.37, 14.8#, 6.64 GAL/SX. TOC@0', BOC @ 232'. WOC SURFACE PLUG OVERNIGHT. SDFN.**

1/19/2024 - CHECK PSI ON WELL SITP 0#, SICP 0#, SIICP NA, BH 0#, BDW 0 MIN. RD RIG FLOOR, ND BOP, PREP TO CUT OFF WH. CUT OFF WH (TOC IN 4.5" 24' & 8-5/8" 0') WELD ON P&A MARKER, FILL CSG & CELLAR W/ 13 SXS. **CLARENCE SMITH, NMOCD, ON LOCATION. RD RR.**

WELL WAS PLUGGED AND ABANDONED ON 1/19/2024.

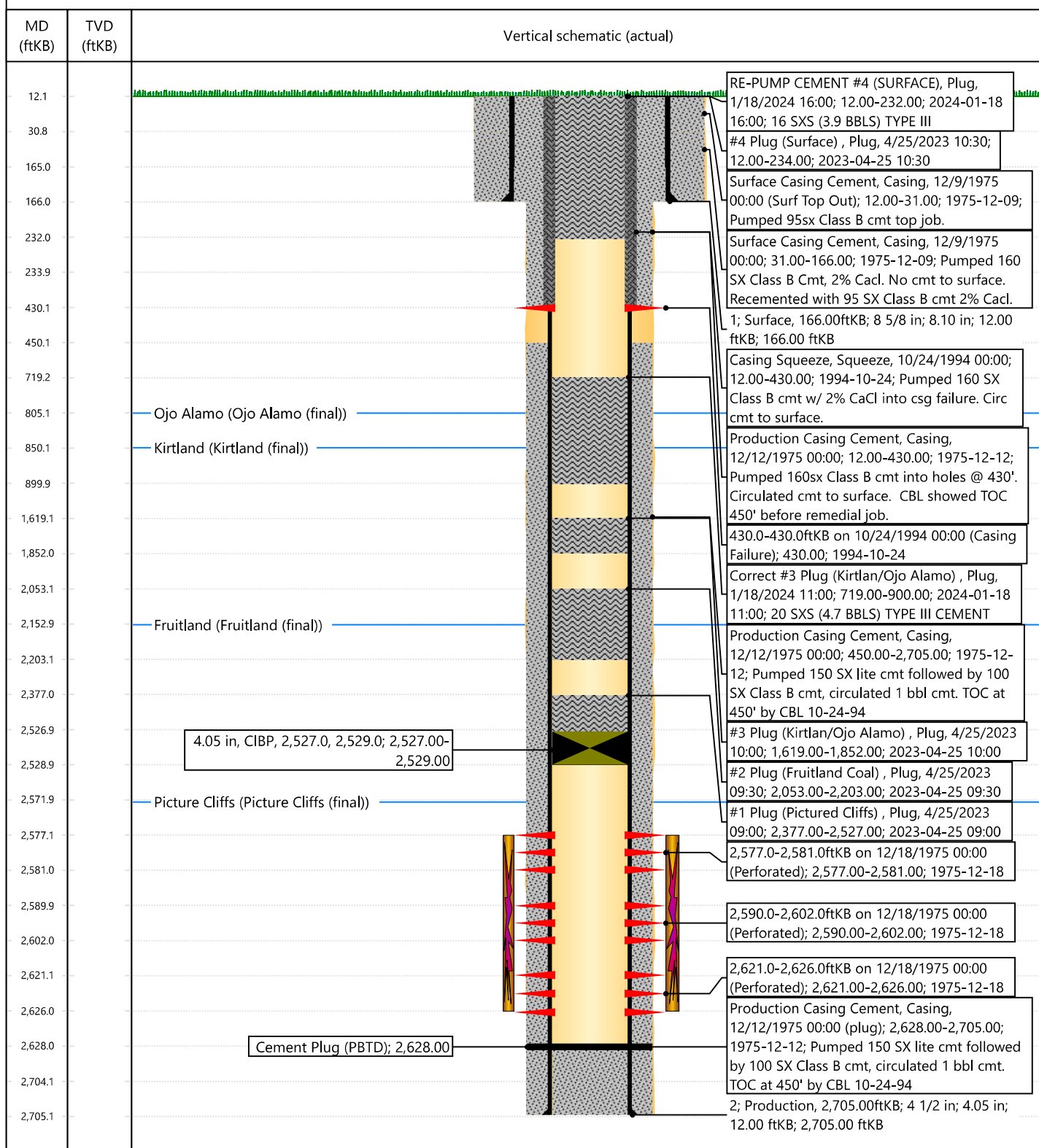


Current Schematic - Version 3

Well Name: LARCHER #2

| | | | | | |
|-----------------------------------|-------------------------------------------|--------------------------------------|--------------------------------|--------------------------------|-------------------------------------|
| API / UWI 3004521143 | Surface Legal Location T31N-R11W-S13 | Field Name Blanco Pictured Cliffs | Route 0302 | State/Province New Mexico | Well Configuration Type Vertical |
| Ground Elevation (ft) 5,860.00 | Original KB/RT Elevation (ft) 5,872.00 | RKB to GL (ft) 12.00 | KB-Casing Flange Distance (ft) | KB-Tubing Hanger Distance (ft) | |

Original Hole [Vertical]



District I
1625 N. French Dr., Hobbs, NM 88240
Phone:(575) 393-6161 Fax:(575) 393-0720
District II
811 S. First St., Artesia, NM 88210
Phone:(575) 748-1283 Fax:(575) 748-9720
District III
1000 Rio Brazos Rd., Aztec, NM 87410
Phone:(505) 334-6178 Fax:(505) 334-6170
District IV
1220 S. St Francis Dr., Santa Fe, NM 87505
Phone:(505) 476-3470 Fax:(505) 476-3462

State of New Mexico
Energy, Minerals and Natural Resources
Oil Conservation Division
1220 S. St Francis Dr.
Santa Fe, NM 87505

CONDITIONS

Action 306147

CONDITIONS

| | |
|--------------------------------------------------------------------------------|------------------------------------------------|
| Operator: HILCORP ENERGY COMPANY 1111 Travis Street Houston, TX 77002 | OGRID: 372171 |
| | Action Number: 306147 |
| | Action Type: [C-103] Sub. Plugging (C-103P) |

CONDITIONS

| Created By | Condition | Condition Date |
|------------|------------------------|----------------|
| mkuehling | well plugged 1/19/2024 | 3/4/2024 |