

U.S. Department of the Interior
BUREAU OF LAND MANAGEMENT

Well Name: PINON MESA A	Well Location: T31N / R14W / SEC 35 / NWNE /	County or Parish/State: SAN JUAN / NM
Well Number: 3	Type of Well: CONVENTIONAL GAS WELL	Allottee or Tribe Name: UTE MOUNTAIN UTE
Lease Number: MOOC14200626	Unit or CA Name:	Unit or CA Number:
US Well Number: 300452328600S1	Well Status: Abandoned	Operator: HILCORP ENERGY COMPANY

Subsequent Report

Sundry ID: 2776656

Type of Submission: Subsequent Report

Type of Action: Plug and Abandonment

Date Sundry Submitted: 02/26/2024

Time Sundry Submitted: 10:27

Date Operation Actually Began: 02/14/2024

Actual Procedure: Hilcorp Energy Company has plugged and abandoned the subject well on 2/21/2024 per the attached report.

SR Attachments

Actual Procedure

Pinon_Mesa_A_3_SR_BLM_Submitted_20240226102641.pdf

Well Name: PINON MESA A

Well Location: T31N / R14W / SEC 35 /
NWNE /County or Parish/State: SAN
JUAN / NM

Well Number: 3

Type of Well: CONVENTIONAL GAS
WELLAllottee or Tribe Name: UTE
MOUNTAIN UTE

Lease Number: MOOC14200626

Unit or CA Name:

Unit or CA Number:

US Well Number: 300452328600S1

Well Status: Abandoned

Operator: HILCORP ENERGY
COMPANY**Operator**

I certify that the foregoing is true and correct. Title 18 U.S.C. Section 1001 and Title 43 U.S.C. Section 1212, make it a crime for any person knowingly and willfully to make to any department or agency of the United States any false, fictitious or fraudulent statements or representations as to any matter within its jurisdiction. Electronic submission of Sundry Notices through this system satisfies regulations requiring a

Operator Electronic Signature: PRISCILLA SHORTY

Signed on: FEB 26, 2024 10:27 AM

Name: HILCORP ENERGY COMPANY

Title: Regulatory Technician

Street Address: 382 ROAD 3100

City: AZTEC

State: NM

Phone: (505) 324-5188

Email address: PSHORTY@HILCORP.COM

Field

Representative Name:

Street Address:

City:

State:

Zip:

Phone:

Email address:

BLM Point of Contact

BLM POC Name: JOE D KILLINS

BLM POC Title: Petroleum Engineer

BLM POC Phone: 9703851363

BLM POC Email Address: JKILLINS@BLM.GOV

Disposition: Accepted

Disposition Date: 02/26/2024

Signature: Joe Killins

PINON MESA A 3

30.045.23286

PLUG AND ABANDONMENT

2/14/2024 – MIRU. CK PRESSURES. SITP 0#, SICP 0#, SIICP 0#, BH 0#. BDW 0 MIN. ND WH, COULD NOT LOOSEN LOCK DOWN PINS ON WH. PINS RUSTED TO WH. HAD TO CUT OUT LOCK PINS. FINISH NU BOP, PRESSURE & FUNCTION TEST BOP'S, RU RIG FLOOR, PULL TBG HANGER @ 32K, 2.375" 4.7# TBG. TOO H W/ PROD TBG. MU 4.5" SCRAPER. TIH TO 5920'. SDFN.

2/15/2024 - CK PRESSURES. SITP 0#, SICP 10#, SIICP 0#, BH 0#. BDW 0 MIN. TOO H. LD SCRAPER. MU 4.5" CICR. TIH, SET CICR @ 5910'. CICR SLID DOWN AND ENDED UP BEING SET @ 5917'. RU CEMENTERS. LOAD PROD TBG. PT TBG TO 900 PSI AND HELD PSI. FINISH RELEASING CICR & LW W/ 31 BBLS & PUMP 110 BBLS @ 3.9 BBLS/MIN, 735 PSI. PT 4.5" CSG TO 580 PSI & FAILED TEST. TOO H. RU WIRELINE, RUN CBL FROM 5917' TO SURFACE. POOH RD WIRELINE. TIH TO 5917'. **RECEIVED APPROVAL TO PUMP PLUG #1 FROM CO BLM REP. PUMP CMT PLUG #1 (CIBP) 16 SX 3.2 BBL, 1.15, 15.8#, 5 GAL/SX. BOC @ 5917'. CO BLM REP RODNEY BRASHEAR ON LOCATION. TOO H. WOC. SDFN.**

2/16/2024 - CK PRESSURES. SITP 0#, SICP 0#, SIICP 0#, BH 0#. BDW 0 MIN. TIH, **TAG CMT PLUG #1 @ 5809'.** RU CEMENTERS, PT PUMP & LINES. LW. PT TO 580 PSI & FAILED. **HEC ENGINEER SENT A TEXT TO JOE KILLINS, CO BLM, AND RECEIVED APPROVAL TO WIRELINE SET CIBP @ 5150' & PT 4.5" FROM 5150' TO SURFACE.** RU WIRELINE, RIH W/ 4.5" CIBP, SET @ 5150'. POOH, LW, PT CSG TO 580 PSI. FAILED PT. LD TBG. TOO H. **CO BLM APPROVED TO PROCEED W/ NORMAL NOI APPROVALS. CO BLM REQUESTED TO WOC ON FUTURE PLUGS UNTIL HEC GETS A GOOD PT. ALSO, HEC WILL PROCEED W/O ADDITIONAL INSIDE PLUGS COVERING THE DV TOOL.** RU WIRELINE, RIH & PERF SQUEEZE HOLES @ 5130' (GALLUP). POOH & RD WIRELINE. LW 2 BBLS, INJ RATE & 1.5 BBLS/MIN, 700 PSI. MU 4.5" CICR & TIH, SET @ 5104'. INJ RATE @ 1300 PSI W/ 1.1 BBLS/MIN. **CO BLM APPROVED TO SET 150' PLUG ON TOP OF CICR @ 5104' TO 4950'. PUMP CMT PLUG #2 (GALLUP TOP) 12 SX 2.4 BBL, 1.15, 15.8# GAL/SX BOC @ 5104'. CO BLM REP RODNEY BRASHEAR ON LOCATION. TOO H. LD STINGER. WOC. SDFWE.**

2/19/2024 - CK PRESSURES. SITP 0#, SICP 0#, SIICP 0#, BH 0#. BDW 0 MIN. TIH & **TAG CMT #2 @ 4899'.** LW & PT TO 600 PSI & FAILED. **PUMP CMT PLUG #3 (MANCOS TOP) 12 SX 2.4 BBL, 1.15, 15.8#, 5 GAL/SX BOC @ 4163'. CO BLM REP RODNEY BRASHEAR ON LOCATION. TOO H. WOC. TIH & TAG CMT PLUG #3 @ 4002'.** LW & PT TO 580 PSI & FAILED. TOO H. LD TAG SUB. **HEC ENGINEER EMAIL JOE KILLINS, CO BLM, AND MONICA KUEHLING, NMOC, REQUESTING APPROVAL TO NOI CHANGES. THE FINAL CHANGES FOR PLUG #4 (MV TOP) WERE TO PERF @ 2950', SET CICR @ 2900', EST INJ RATE, PUMP 200' OUTSIDE PLUG, 50' INSIDE BENEATH CICR, AND 100' BALANCED PLUG INSIDE ON TOP OF CICR. AND COMBINE PLUGS #7 & #8 FOR 630' INSIDE PLUG FROM 630' TO SURFACE. CO BLM REP CALLED OFFICE MULTIPLE TIMES ABOUT CHANGES ON NOI, DECIDED TO APPROVE NOI CHANGE & PROCEED W/ PERF @ 2950', SETTING CICR @ 2900'. CO BLM APPROVED THE CHANGES.** RU WIRELINE, RIH & PERF SQUEEZE HOLES @ 2950' (CLIFFHOUSE). POOH & RD WIRELINE. LW, INJ RATE @ 1.2 BBLS/MIN, 750 PSI. MU 4.5" CICR, TIH TO 2900'. SET CICR. INJ RATE @ 1.2 BBLS/MIN W/ 700 PSI. **PUMP CMT PLUG #4 (CLIFFHOUSE TOP) 52 SX 10.5 BBL, 1.15, 15.8#, 5 GAL/SX. BOC @ 2950'. 44 SX UNDER CICR & 8 SX ON TOP OF CICR. TOO H. WOC. SDFN.**

2/20/2024 - CK PRESSURES. SITP 0#, SICP 0#, SIICP 0#, BH 0#. BDW 0 MIN. MU TAG SUB, TIH & **TAG CMT PLUG #4 @ 2770'.** LW W/ INHIBITOR. PT 4.5" CSG TO 600 PSI & PASS TEST. TOO H W/ TBG & LD TAG SUB. RU WIRELINE, RIH & PERF SQUEEZE HOLES @ 2460' (CHACRA TOP). POOH & RD WIRELINE. LW 2 BBLS, INJ RATE @ 1.5 BBLS/MIN, 700 PSI. MU 4.5" CICR, TIH & SET @ 2410'. INJ RATE @ 1.4 BBLS/MIN & 700 PSI. **PUMP CMT PLUG #5 (CHACRA TOP) 52 SX 10.5 BBL, 1.15, 15.8#, 5 GAL/SX BOC @ 2460'. 44 SX UNDER CICR & 8 SX ON TOP OF CICR. TOO H. WOC. MU TAG SUB, TIH & TAG CMT PLUG #5 @ 2270'. LW.**

PINON MESA A 3

30.045.23286

PLUG AND ABANDONMENT

PT 4.5" CSG TO 600 PSI & PASSED. **PUMP CMT PLUG #6 (PICTURED CLIFFS TOP) 12 SX 2.4 BBL, 1.15, 15.8#, 5 GAL/SX. TOC @ 1188', BOC @ 1338'. PUMP CMT PLUG #7 (FRD & SURFACE) 59 SX 12 BBL, 1.15, 15.8#, 5 GAL/SX TOC@ 0', BOC @ 644'. LD JTS. WASH OUT BOP OF CMT & WASH OUT TBG OF CMT. CO BLM REP RODNEY BRASHER ON LOCATION. SDFN.**

2/21/2024 - CK PRESSURES. SITP 0#, SICP 0#, SIICP 0#, BH 0#. BDW 0 MIN. RD RIG FLOOR, ND BOP & NU WH. CUT OFF WH (TOC IN 4.5" PROD 64' & 8-5/8" SURFACE 5') WELD ON P&A MARKER. FILL CSG AND CELLAR W/ 21 SX. RDRR.

WELL WAS PLUGGED AND ABANDONED ON 2/21/2024.

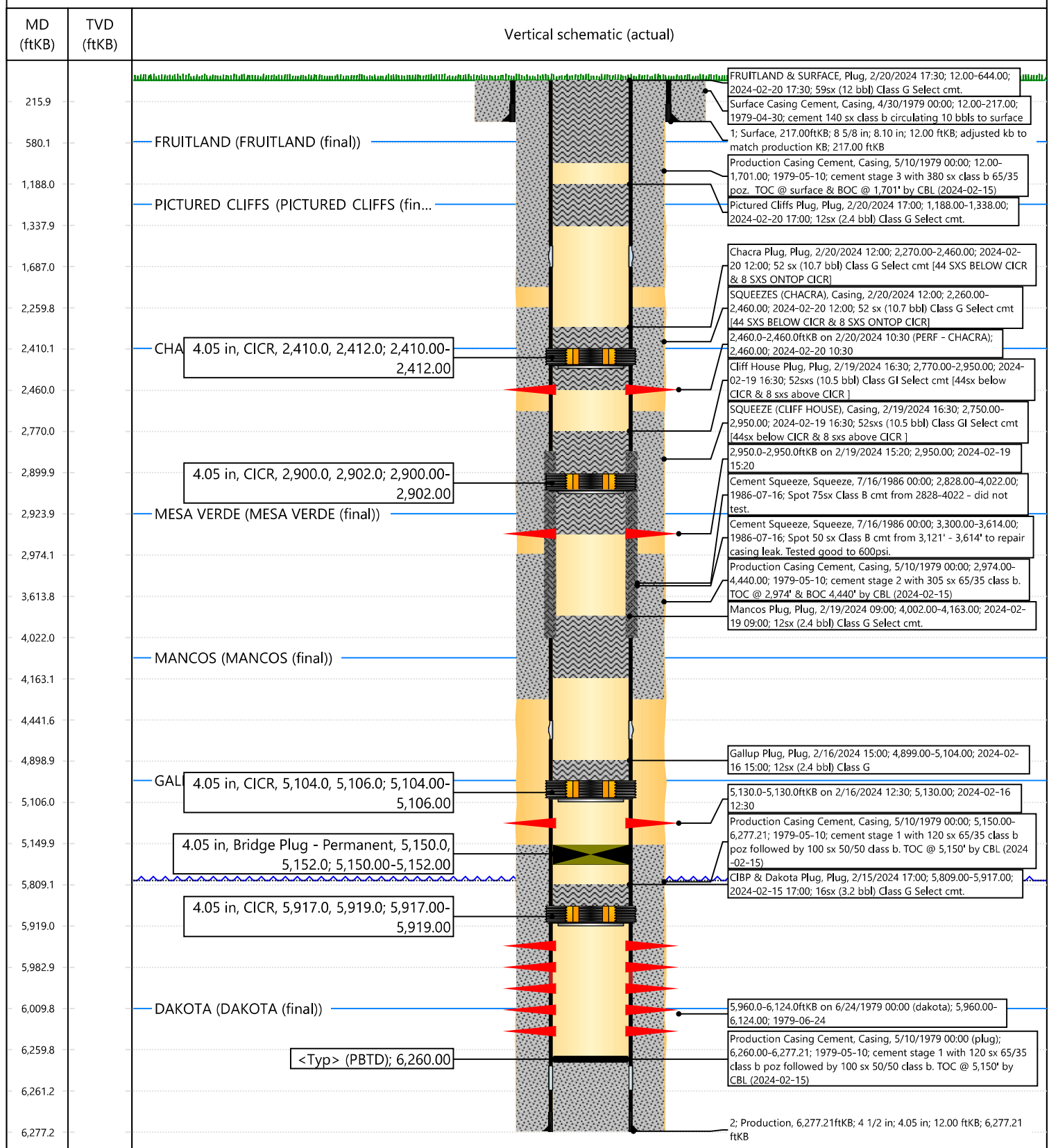


Current Schematic - Version 3

Well Name: PINON MESA A #3

API / UWI 3004523286	Surface Legal Location T31N-R14-S35	Field Name Basin Dakota	Route 0202	State/Province New Mexico	Well Configuration Type Vertical
Ground Elevation (ft) 5,632.00	Original KB/RT Elevation (ft) 5,644.00	RKB to GL (ft) 12.00	KB-Casing Flange Distance (ft)	KB-Tubing Hanger Distance (ft)	

Original Hole [Vertical]



Priscilla Shorty

From: Killins, Joe D <jkillins@blm.gov>

Sent: Tuesday, February 20, 2024 8:02 AM

To: John LaMond <jlamond@hilcorp.com>

Subject: RE: [EXTERNAL] RE: Recap of Approved P&A Revision for Hilcorp's Pinon Mesa A 3 (API # 3004523286)

Hi John,

This is acceptable.

Best regards,

Joe

Joe Killins

Petroleum Engineer

Tres Rios Field Office

161 Burnett Drive - Unit 4

Durango, CO 81301-3647

Cell: 970-759-8988

From: Kuehling, Monica, EMNRD <monica.kuehling@emnrd.nm.gov>

Sent: Monday, February 19, 2024 1:40 PM

To: John LaMond; jkillins@blm.gov

Cc: Farmington Regulatory Techs; Brice Clyde - (C); Clay Padgett; Lee Murphy; Max Weaver;
Rustin Mikeska

Subject: RE: [EXTERNAL] RE: Recap of Approved P&A Revision for Hilcorp's Pinon Mesa A 3 (API # 3004523286)

NMOCD approves below emailed 1:39 p.m. with prior approval from the BLM

Thank you

Monica Kuehling

Compliance Officer Supervisor

Deputy Oil and Gas Inspector

New Mexico Oil Conservation Division

North District

Office Phone: 505-334-6178 ext. 123

Cell Phone: 505-320-0243

Email - monica.kuehling@emnrd.nm.gov

From: John LaMond <jlamond@hilcorp.com>

Sent: Monday, February 19, 2024 1:39 PM

To: Kuehling, Monica, EMNRD <monica.kuehling@emnrd.nm.gov>; Killins, Joe D <jkillins@blm.gov>

Cc: Farmington Regulatory Techs <FarmingtonRegulatoryTechs@hilcorp.com>; Brice Clyde - (C) <Brice.Clyde@hilcorp.com>; Clay Padgett <cpadgett@hilcorp.com>; Lee Murphy <lmurphy@hilcorp.com>; Max Weaver <mweaver@hilcorp.com>; Rustin Mikeska <rmikeska@hilcorp.com>; John LaMond <jlamond@hilcorp.com>

Subject: RE: [EXTERNAL] RE: Recap of Approved P&A Revision for Hilcorp's Pinon Mesa A 3 (API # 3004523286)

Monica,

We will make that adjustment. We will plan to do the following:

PLUG #4 (MV TOP @ 2,924'):

- Perforate squeeze perms @ 2,950'
- TIH & set the CICR at 2,900', establish an injection rate
- Pump a 200' outside plug, 50' of cement inside beneath the CICR, and a 100' balanced inside plug on top of the CICR (est. TOC @ 2,800').

PLUG #7 & PLUG #8 (Fruitland Top @ 580' and Surface Shoe @ 217'):

- Combine these two plugs, pumping a 630' inside plug from 630' to surface.

Joe, please let us know if you agree with this plan.

Thanks,

John LaMond

Operations Engineer – Technical Services

Hilcorp Energy Company

1111 Travis

Houston, TX 77002

346-237-2210 (Office)

832-754-9692 (Cell)

jlamond@hilcorp.com

From: Kuehling, Monica, EMNRD <monica.kuehling@emnrn.dnm.gov>

Sent: Monday, February 19, 2024 2:08 PM

To: John LaMond <jlamond@hilcorp.com>; jkillins@blm.gov

Cc: Farmington Regulatory Techs <FarmingtonRegulatoryTechs@hilcorp.com>; Brice Clyde - (C)

<Brice.Clyde@hilcorp.com>; Clay Padgett <cpadgett@hilcorp.com>; Lee Murphy <lmurphy@hilcorp.com>; Max Weaver

<mweaver@hilcorp.com>; Rustin Mikeska <rmikeska@hilcorp.com>

Subject: RE: [EXTERNAL] RE: Recap of Approved P&A Revision for Hilcorp's Pinon Mesa A 3 (API # 3004523286)

CAUTION: External sender. DO NOT open links or attachments from UNKNOWN senders.

John

You need to be running 200 feet on the outside

50 feet below the retainer

100 feet above the retainer

Plugs should be ran with 150 feet of cement on the inside 200 feet on the outside -

Monica

From: John LaMond <jlamond@hilcorp.com>

Sent: Monday, February 19, 2024 12:44 PM

To: Kuehling, Monica, EMNRD <monica.kuehling@emnrn.dnm.gov>; jkillins@blm.gov

Cc: Farmington Regulatory Techs <FarmingtonRegulatoryTechs@hilcorp.com>; Brice Clyde - (C) <Brice.Clyde@hilcorp.com>; Clay Padgett <cpadgett@hilcorp.com>; Lee Murphy <lmurphy@hilcorp.com>; Max Weaver <mweaver@hilcorp.com>; Rustin Mikeska <rmikeska@hilcorp.com>; John LaMond <jlamond@hilcorp.com>
Subject: RE: [EXTERNAL] RE: Recap of Approved P&A Revision for Hilcorp's Pinon Mesa A 3 (API # 3004523286)

Monica,

Will do. We will plan to do the following:

PLUG #4 (MV TOP @ 2,924'):

- Perforate squeeze perms @ 2,950'
- TIH & set the CICR at 2,900', establish an injection rate
- Pump a 200' outside plug, 50' of cement inside beneath the CICR, and a 76' balanced inside plug on top of the CICR (est. TOC @ 2,824').

PLUG #7 & PLUG #8 (Fruitland Top @ 580' and Surface Shoe @ 217'):

- Combine these two plugs, pumping a 630' inside plug from 630' to surface.

Joe, please let us know if you agree with this plan.

Thanks,

John LaMond

Operations Engineer – Technical Services
Hilcorp Energy Company
1111 Travis
Houston, TX 77002
346-237-2210 (Office)
832-754-9692 (Cell)
jlamond@hilcorp.com

From: Kuehling, Monica, EMNRD <monica.kuehling@emnr.dn.m.gov>

Sent: Monday, February 19, 2024 12:33 PM

To: John LaMond <jlamond@hilcorp.com>; jkillins@blm.gov

Cc: Farmington Regulatory Techs <FarmingtonRegulatoryTechs@hilcorp.com>; Brice Clyde - (C) <Brice.Clyde@hilcorp.com>; Clay Padgett <cpadgett@hilcorp.com>; Lee Murphy <lmurphy@hilcorp.com>; Max Weaver <mweaver@hilcorp.com>; Rustin Mikeska <rmikeska@hilcorp.com>

Subject: RE: [EXTERNAL] RE: Recap of Approved P&A Revision for Hilcorp's Pinon Mesa A 3 (API # 3004523286)

CAUTION: External sender. DO NOT open links or attachments from UNKNOWN senders.

John

Please run 50 feet of cement below the retainer inside.

The rest is approved with prior approval from the BLM.

Thank you

Monica Kuehling
Compliance Officer Supervisor
Deputy Oil and Gas Inspector
New Mexico Oil Conservation Division
North District
Office Phone: 505-334-6178 ext. 123
Cell Phone: 505-320-0243
Email - monica.kuehling@emnrd.nm.gov

From: John LaMond <jlamond@hilcorp.com>
Sent: Monday, February 19, 2024 10:49 AM
To: jkillins@blm.gov
Cc: Kuehling, Monica, EMNRD <monica.kuehling@emnrd.nm.gov>; Farmington Regulatory Techs <FarmingtonRegulatoryTechs@hilcorp.com>; Brice Clyde - (C) <Brice.Clyde@hilcorp.com>; Clay Padgett <cpadgett@hilcorp.com>; Lee Murphy <lmurphy@hilcorp.com>; Max Weaver <mweaver@hilcorp.com>; Rustin Mikeska <rmikeska@hilcorp.com>; John LaMond <jlamond@hilcorp.com>
Subject: [EXTERNAL] RE: Recap of Approved P&A Revision for Hilcorp's Pinon Mesa A 3 (API # 3004523286)

CAUTION: This email originated outside of our organization. Exercise caution prior to clicking on links or opening attachments.

Good morning Joe,

After additional review, Hilcorp requests the following adjustments to the approved NOI procedure:

PLUG #4 (MV TOP @ 2,924'):

- The approved NOI calls for squeeze perfs @ 2,974'. Based on the CBL run 2/15/2024, cement is present at that depth.
- Hilcorp requests to instead perforate squeeze perfs @ 2,950'. We will then run the CICR at the already proposed 2,924', establish injection rate, pump a 200' outside plug, 26' of cement inside beneath the CICR, and a 100' balanced inside plug on top of the CICR (est. TOC @ 2,824').

PLUG #7 & PLUG #8 (Fruitland Top @ 580' and Surface Shoe @ 217'):

- Hilcorp requests to combine these two plugs, pumping a 630' inside plug from 630' to surface.

Joe, do you approve of these adjustments?

Thanks,

John LaMond

Operations Engineer – Technical Services
Hilcorp Energy Company
1111 Travis
Houston, TX 77002
346-237-2210 (Office)
832-754-9692 (Cell)
jlamond@hilcorp.com

From: John LaMond <jlamond@hilcorp.com>
Sent: Monday, February 19, 2024 9:19 AM
To: jkillins@blm.gov
Cc: Kuehling, Monica, EMNRD <monica.kuehling@emnrd.nm.gov>; Farmington Regulatory Techs <FarmingtonRegulatoryTechs@hilcorp.com>; Brice Clyde - (C) <Brice.Clyde@hilcorp.com>; Clay Padgett <cpadgett@hilcorp.com>; John LaMond <jlamond@hilcorp.com>; Lee Murphy <lmurphy@hilcorp.com>; Max Weaver <mweaver@hilcorp.com>; Rustin Mikeska <rmikeska@hilcorp.com>
Subject: Recap of Approved P&A Revision for Hilcorp's Pinon Mesa A 3 (API # 3004523286)

Good morning Joe,

Below describes the events and approved changes of the Pinon Mesa A 3 P&A thus far.

I have attached the originally approved NOI as well as the CBL run 2/15/2024 for reference.

2/14/2024:

- MIRU, NU & test BOPs, TOOH w/ tubing & TIH with casing scraper.

2/15/2024:

- TOOH w/ casing scraper, TIH and attempt to set CICR @ 5,910'. CICR slid down and ended up being set at 5,917'
- Pressure test 2-3/8" tubing to 900 psi (good test)
- Pressure test 4-1/2" casing to 580 psi (test failed)
- RU Wireline, run CBL (attached)
- Received approval to pump Plug #1 from BLM rep
- Pump Plug #1 – 16sx of Class G cement (Est. TOC @ 5,704' and Est. BOC @ 5,917')
- WOC overnight

2/16/2024:

- TIH w/ tubing and tag cement Plug #1 @ 5,809'
- Pressure test 4-1/2" casing to 580 psi (test failed)
- Received verbal approval from Joe Killins w/ BLM to set a CIBP @ 5,150' and pressure test casing again
- Wireline set CIBP @ 5,150' and pressure test 4-1/2" casing to 580 psi (test failed)
- Received verbal approval to perforate squeeze perfs @ 5,130' and set CICR @ 5,104', and set 124' balanced plug on top of the CICR @ 5,104'.
- Additionally received verbal approval to proceed with the remainder of the approved NOI plugs as planned, while also WOC on all future plugs until a good pressure test is recorded. NOI plugs approved based on the results of the CBL. Additionally Hilcorp received verbal approval to proceed without any additional inside plugs to cover the DV tools.
- RIH w/ wireline and perforate @ 5,130', TIH and set CICR @ 5,104'. Sting into CICR @ 5,104' and establish injection rate (1.1 BPM @ 1,300 psi). Contact BLM to discuss options.
- Received verbal approval from BLM to 150' of cement on top of CICR @ 5,104'.
- Pump Plug #2 (TOC @ 4,950' and BOC @ 5,104').
- WOC. Shut down for weekend.

Please let me know if you have any questions, Joe!

Thanks,

John LaMond

Operations Engineer – Technical Services

Hilcorp Energy Company
1111 Travis
Houston, TX 77002
346-237-2210 (Office)
832-754-9692 (Cell)
jlamond@hilcorp.com

District I
1625 N. French Dr., Hobbs, NM 88240
Phone:(575) 393-6161 Fax:(575) 393-0720
District II
811 S. First St., Artesia, NM 88210
Phone:(575) 748-1283 Fax:(575) 748-9720
District III
1000 Rio Brazos Rd., Aztec, NM 87410
Phone:(505) 334-6178 Fax:(505) 334-6170
District IV
1220 S. St Francis Dr., Santa Fe, NM 87505
Phone:(505) 476-3470 Fax:(505) 476-3462

State of New Mexico
Energy, Minerals and Natural Resources
Oil Conservation Division
1220 S. St Francis Dr.
Santa Fe, NM 87505

CONDITIONS

Action 317545

CONDITIONS

Operator: HILCORP ENERGY COMPANY 1111 Travis Street Houston, TX 77002	OGRID: 372171
	Action Number: 317545
	Action Type: [C-103] Sub. Plugging (C-103P)

CONDITIONS

Created By	Condition	Condition Date
mkuehling	well plugged for record 2/21/2024	3/4/2024