

<b>Well Name:</b> FOOTHILLS C	<b>Well Location:</b> T30N / R12W / SEC 19 / NWNE / 36.803452 / -108.133804	<b>County or Parish/State:</b> SAN JUAN / NM
<b>Well Number:</b> 1B	<b>Type of Well:</b> OTHER	<b>Allottee or Tribe Name:</b>
<b>Lease Number:</b> NMNM048576	<b>Unit or CA Name:</b>	<b>Unit or CA Number:</b>
<b>US Well Number:</b> 3004528974	<b>Well Status:</b> Abandoned	<b>Operator:</b> HILCORP ENERGY COMPANY

### Subsequent Report

**Sundry ID:** 2774081

**Type of Submission:** Subsequent Report

**Type of Action:** Plug and Abandonment

**Date Sundry Submitted:** 02/08/2024

**Time Sundry Submitted:** 07:03

**Date Operation Actually Began:** 02/05/2024

**Actual Procedure:** Hilcorp Energy Company has plugged and abandoned the subject well on 2/7/2024 per the attached report.

### SR Attachments

#### Actual Procedure

FOOTHILLS\_C\_1B\_P\_A\_SR\_BLM\_Submitted\_20240208070245.pdf

Well Name: FOOTHILLS C

Well Location: T30N / R12W / SEC 19 /  
NWNE / 36.803452 / -108.133804County or Parish/State: SAN  
JUAN / NM

Well Number: 1B

Type of Well: OTHER

Allottee or Tribe Name:

Lease Number: NMNM048576

Unit or CA Name:

Unit or CA Number:

US Well Number: 3004528974

Well Status: Abandoned

Operator: HILCORP ENERGY  
COMPANY**Operator**

I certify that the foregoing is true and correct. Title 18 U.S.C. Section 1001 and Title 43 U.S.C. Section 1212, make it a crime for any person knowingly and willfully to make to any department or agency of the United States any false, fictitious or fraudulent statements or representations as to any matter within its jurisdiction. Electronic submission of Sundry Notices through this system satisfies regulations requiring a

Operator Electronic Signature: PRISCILLA SHORTY

Signed on: FEB 08, 2024 07:03 AM

Name: HILCORP ENERGY COMPANY

Title: Regulatory Technician

Street Address: 382 ROAD 3100

City: AZTEC

State: NM

Phone: (505) 324-5188

Email address: PSHORTY@HILCORP.COM

**Field**

Representative Name:

Street Address:

City:

State:

Zip:

Phone:

Email address:

**BLM Point of Contact**

BLM POC Name: MATTHEW H KADE

BLM POC Title: Petroleum Engineer

BLM POC Phone: 5055647736

BLM POC Email Address: MKADE@BLM.GOV

Disposition: Accepted

Disposition Date: 02/08/2024

Signature: Matthew Kade

FOOTHILLS C 1B

30.045.28974

PLUG AND ABANDONMENT

**2/5/2024** – HEC ENGINEER EMAILED KENNY RENNICK, BLM, AND MONICA KUEHLING, NMOCD, REQUESTING TO PUMP INSIDE PLUGS BASED ON CBL AND TO TOP OFF CMT WITH 1" POLYLINE AS NEEDED. ALSO, ASKED FOR CLARIFICATION ON PLUG COMBINATIONS. BLM REQUESTED TO COMBINE PLUGS #2 AND #3 AND SET PLUG #1 BY ITSELF. NMOCD REQUESTED TO PERFORATE @ 290' TO GET CMT TO SURFACE AND DECISION AFTER THE KIRTLAND OJO PLUG WILL DEPEND ON CSG TEST. MIRU. CHECK PSI ON WELL SITP 0#, SICP 0#, SIICP 0#, BH 0#, BDW 0 MIN. ND WH, NU BOP, PRESSURE TEST & FUNCTION TEST BOPS. RU RIG FLOOR. MU 5.5" SCRAPER. RIH TO 1824' TAG CIBP. SDFN.

**2/6/2024** – CK PSI ON WELL SITP 0#, SICP 0#, SIICP 0#, BH 0#, BDW 0 MIN. RU CEMENTERS. LW W/ 1.5 BBLS & PUMP 30 BBLS. PT TO 580 SPI & HOLD FOR 30 MINS. GOOD TEST. HEC ENGINEER EMAILED AN UPDATE TO KENNY RENNICK, BLM, AND MONICA KUEHLING, NMOCD, THAT AFTER A SUCCESSFUL PRESSURE TEST, APPROVALS WERE GIVEN TO PUMP PLUG #1 PER NOI DESIGN AND TO PERF @ 290', EST CIRC UP 5-1/2" X 8-5/8" ANNULUS, RIH TO 616' AND PUMP #2 AND #3 COMBINED. THE COMBINED PLUG WILL BE FROM 616' TO SURFACE AND OUTSIDE PLUG FROM 290' TO SURFACE. PUMP CEMENT PLUG #1 (CIBP & FRD TOP) 15 SX 3.6 BBL, 1.37, 14.8#, 6.64 GAL/SX. BOC @ 1824'. JOSEPH MAESTAS, BLM REP, ON LOCATION. TOOH. WOC. TIH AND TAG CEMENT PLUG #1 @ 1695'. TOOH. RU WIRELINE, RIH & PERF CIRC HOLES @ 290' (SURFACE). POOH & RD WIRELINE. LW 9 BBLS, INJ RATE @ 2.9 BBLS/MIN, 169 PSI. GOOD CIRC OUT BH & 5.5" CSG @ SURFACE. PUMP CEMENT PLUG #2 (KRD, OJO, & SURFACE) 99 SX, 24.1 BBL, 1.37, 14.8#, 6.64 GALS/SX TOC @ 0', BOC @ 616'. 60 SX IN 5.5" & 39 SX IN 8-5/8". LD JTS. RD RIG FLOOR. WOC SURFACE PLUG. SDFN.

**2/7/2024** - CK PSI ON WELL SITP 0#, SICP 0#, SIICP 0#, BH 0#, BDW 0 MIN. RD FLOOR, ND BOP & NU WH. CUT OFF WH. TOC IN 5.5" PROD 0' & 8-5/8" SURFACE 0'. WELD ON P&A MARKER, FILL CASING AND CELLAR W/ 16 SX CMT. JOSEPH MAESTAS, BLM, WAS ON LOCATION. RD RR.

**WELL WAS PLUGGED AND ABANDONED ON 2/7/2024.**

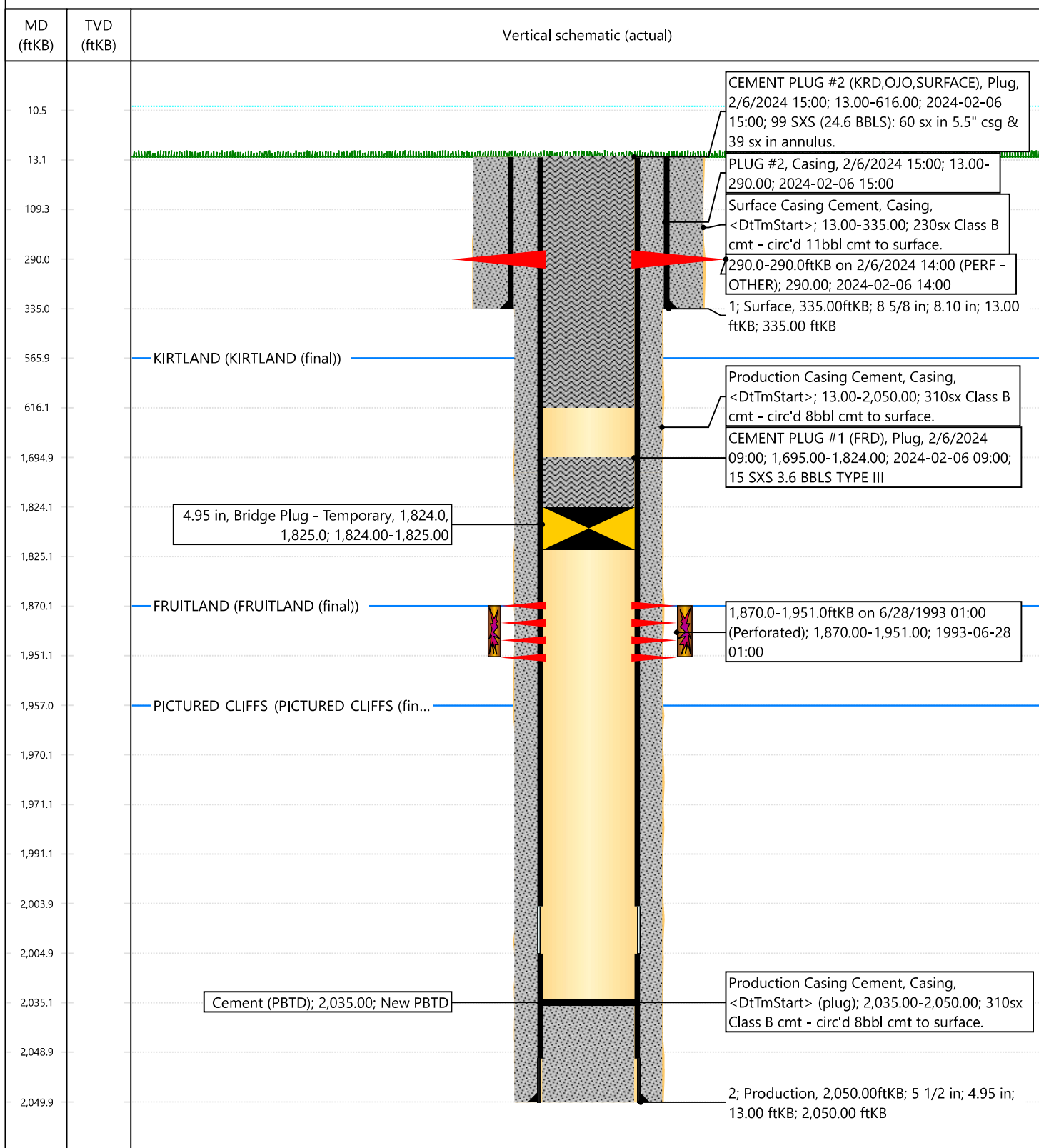


## Current Schematic - Version 3

Well Name: FOOTHILLS C #1B

API / UWI 3004528974	Surface Legal Location T30N-R12W-S19	Field Name Basin Fruitland Coal	Route 0209	State/Province New Mexico	Well Configuration Type Vertical
Ground Elevation (ft) 5,844.00	Original KB/RT Elevation (ft) 5,857.00	RKB to GL (ft) 13.00	KB-Casing Flange Distance (ft)	KB-Tubing Hanger Distance (ft)	

## Original Hole [Vertical]



**Priscilla Shorty**

---

**From:** Kuehling, Monica, EMNRD <monica.kuehling@emnrd.nm.gov>  
**Sent:** Tuesday, February 6, 2024 10:11 AM  
**To:** John LaMond; Rennick, Kenneth G; Kade, Matthew H  
**Cc:** Farmington Regulatory Techs; Brice Clyde - (C); Clay Padgett; Lee Murphy; Max Weaver; Rustin Mikeska  
**Subject:** RE: [EXTERNAL] CBL Submission & P&A Revision for Hilcorp's FOOTHILLS C 1B (API # 3004528974)

**CAUTION:** External sender. DO NOT open links or attachments from UNKNOWN senders.

NMOCD approves with prior approval from the BLM

Thank you

Monica Kuehling  
Compliance Officer Supervisor  
Deputy Oil and Gas Inspector  
New Mexico Oil Conservation Division  
North District  
Office Phone: 505-334-6178 ext. 123  
Cell Phone: 505-320-0243  
Email - monica.kuehling@emnrd.nm.gov

---

**From:** John LaMond <jlamond@hilcorp.com>  
**Sent:** Tuesday, February 6, 2024 9:46 AM  
**To:** Kuehling, Monica, EMNRD <monica.kuehling@emnrd.nm.gov>; Rennick, Kenneth G <krennick@blm.gov>; Kade, Matthew H <mkade@blm.gov>  
**Cc:** Farmington Regulatory Techs <FarmingtonRegulatoryTechs@hilcorp.com>; Brice Clyde - (C) <Brice.Clyde@hilcorp.com>; Clay Padgett <cpadgett@hilcorp.com>; Lee Murphy <lmurphy@hilcorp.com>; Max Weaver <mweaver@hilcorp.com>; Rustin Mikeska <rmikeska@hilcorp.com>  
**Subject:** RE: [EXTERNAL] CBL Submission & P&A Revision for Hilcorp's FOOTHILLS C 1B (API # 3004528974)

Good morning Kenny and Monica,

Based on the successful pressure test against the CIBP @ 1,824', Hilcorp received verbal approval from the BLM and NMOCD for the following operations:

- 1) Pump Plug #1 per NOI design
  - a. WOC 4 hours and tag TOC per NMOCD and BLM
- 2) Perforate 5-1/2" production casing at 290'
  - a. Establish circulation up the 5-1/2" x 8-5/8" annulus
  - b. RIH w/ work string to 616'. Reestablish circulation. Pump Plug #2 and Plug #3 combined (inside plug from 616' to surface and outside plug from 290' to surface).
  - c. Top of cement as needed.

Please let me know if you have any questions or concerns with this plan.

Thanks,

**John LaMond**

Operations Engineer – Technical Services  
Hilcorp Energy Company  
1111 Travis  
Houston, TX 77002  
346-237-2210 (Office)  
832-754-9692 (Cell)  
[jlamond@hilcorp.com](mailto:jlamond@hilcorp.com)

---

**From:** Kuehling, Monica, EMNRD <[monica.kuehling@emnrd.nm.gov](mailto:monica.kuehling@emnrd.nm.gov)>  
**Sent:** Monday, February 5, 2024 4:09 PM  
**To:** John LaMond <[jlamond@hilcorp.com](mailto:jlamond@hilcorp.com)>; Rennick, Kenneth G <[krennick@blm.gov](mailto:krennick@blm.gov)>; Kade, Matthew H <[mkade@blm.gov](mailto:mkade@blm.gov)>  
**Cc:** Farmington Regulatory Techs <[FarmingtonRegulatoryTechs@hilcorp.com](mailto:FarmingtonRegulatoryTechs@hilcorp.com)>; Brice Clyde - (C) <[Brice.Clyde@hilcorp.com](mailto:Brice.Clyde@hilcorp.com)>; Clay Padgett <[cpadgett@hilcorp.com](mailto:cpadgett@hilcorp.com)>; Lee Murphy <[lmurphy@hilcorp.com](mailto:lmurphy@hilcorp.com)>; Max Weaver <[mweaver@hilcorp.com](mailto:mweaver@hilcorp.com)>; Rustin Mikeska <[rmikeska@hilcorp.com](mailto:rmikeska@hilcorp.com)>  
**Subject:** RE: [EXTERNAL] CBL Submission & P&A Revision for Hilcorp's FOOTHILLS C 1B (API # 3004528974)

**CAUTION:** External sender. DO NOT open links or attachments from UNKNOWN senders.

John

I do not see good cement at the surface shoe.

Try perforating at 290. Try getting cement to surface after that

BLM is calling Ojo at 408 – 308 will come up into the shoe

Casing test has not been performed.

Decision on whether to proceed after Kirtland ojo plug will depend on casing test. Let me know results.

Thank you

Monica Kuehling  
NMOCD

---

**From:** John LaMond <[jlamond@hilcorp.com](mailto:jlamond@hilcorp.com)>  
**Sent:** Monday, February 5, 2024 8:17 AM  
**To:** Kuehling, Monica, EMNRD <[monica.kuehling@emnrd.nm.gov](mailto:monica.kuehling@emnrd.nm.gov)>; Rennick, Kenneth G <[krennick@blm.gov](mailto:krennick@blm.gov)>; Kade, Matthew H <[mkade@blm.gov](mailto:mkade@blm.gov)>  
**Cc:** Farmington Regulatory Techs <[FarmingtonRegulatoryTechs@hilcorp.com](mailto:FarmingtonRegulatoryTechs@hilcorp.com)>; Brice Clyde - (C) <[Brice.Clyde@hilcorp.com](mailto:Brice.Clyde@hilcorp.com)>; Clay Padgett <[cpadgett@hilcorp.com](mailto:cpadgett@hilcorp.com)>; John LaMond <[jlamond@hilcorp.com](mailto:jlamond@hilcorp.com)>; Lee Murphy

<[lmurphy@hilcorp.com](mailto:lmurphy@hilcorp.com)>; Max Weaver <[mweaver@hilcorp.com](mailto:mweaver@hilcorp.com)>; Rustin Mikeska <[rmikeska@hilcorp.com](mailto:rmikeska@hilcorp.com)>

**Subject:** [EXTERNAL] CBL Submission & P&A Revision for Hilcorp's FOOTHILLS C 1B (API # 3004528974)

CAUTION: This email originated outside of our organization. Exercise caution prior to clicking on links or opening attachments.

Good morning Kenny and Monica,

Hilcorp is planning to move onto the FOOTHILLS C 1B for P&A later this morning (2/5/2024).

In advance of moving onto this well, please find attached a CBL that was run on 6/28/1993. The CBL shows cement up to ~323'.

Based on the results of the CBL, Hilcorp requests to proceed with pumping inside plugs only. We will then RIH w/ 1" polyline down the backside and top off cement to surface as needed.

In addition, I had a question regarding the COAs in attached approved NOI for this P&A.

- The BLM requested that Plug #1 and Plug #2 are combined in order to cover the Ojo Alamo Formation.
  - Kenny, did the BLM mean to instead request the combination of Plug #2 and Plug #3? Plug #1 covers the Fruitland only. Combining Plug #2 and Plug #3 would cover from the Kirtland to Surface, and would include the Ojo Alamo in that coverage.
  - Do we have permission to Set Plug #1 by itself, and combine Plug #2 and Plug #3? This would cover from ~616' to surface.

Please let me know if you have any questions or concerns with this plan.

Thanks,

**John LaMond**

Operations Engineer – Technical Services

Hilcorp Energy Company

1111 Travis

Houston, TX 77002

346-237-2210 (Office)

832-754-9692 (Cell)

[jlamond@hilcorp.com](mailto:jlamond@hilcorp.com)

---

The information contained in this email message is confidential and may be legally privileged and is intended only for the use of the individual or entity named above. If you are not an intended recipient or if you have received this message in error, you are hereby notified that any dissemination, distribution, or copy of this email is strictly prohibited. If you have received this email in error, please immediately notify us by return email or telephone if the sender's phone number is listed above, then promptly and permanently delete this message.

While all reasonable care has been taken to avoid the transmission of viruses, it is the responsibility of the recipient to ensure that the onward transmission, opening, or use of this message and any attachments will not adversely affect its systems or data. No responsibility is accepted by the company in this regard and the recipient should carry out such virus and other checks as it considers appropriate.

---

## Priscilla Shorty

---

**From:** Rennick, Kenneth G <krennick@blm.gov>  
**Sent:** Monday, February 5, 2024 8:56 AM  
**To:** John LaMond; Kuehling, Monica, EMNRD; Kade, Matthew H  
**Cc:** Farmington Regulatory Techs; Brice Clyde - (C); Clay Padgett; Lee Murphy; Max Weaver; Rustin Mikeska  
**Subject:** Re: [EXTERNAL] CBL Submission & P&A Revision for Hilcorp's FOOTHILLS C 1B (API # 3004528974)

**CAUTION:** External sender. DO NOT open links or attachments from UNKNOWN senders.

Hello John,

Pardon for the error, the BLM did mean to request the combination of plug 2 and 3. Permission is granted for setting plug 1 by itself.

The BLM finds the proposed inside plugs and poly line appropriate.

Let me know if you need additional clarifications.

Kenny Rennick

Kenneth (Kenny) Rennick

Petroleum Engineer

Bureau of Land Management  
Farmington Field Office  
6251 College Blvd  
Farmington, NM 87402

Email: [krennick@blm.gov](mailto:krennick@blm.gov)  
Mobile & Text: 505.497.0019

---

**From:** John LaMond <jlamond@hilcorp.com>  
**Sent:** Monday, February 5, 2024 8:16 AM  
**To:** Kuehling, Monica, EMNRD <monica.kuehling@emnrn.nm.gov>; Rennick, Kenneth G <krennick@blm.gov>; Kade, Matthew H <mkade@blm.gov>  
**Cc:** Farmington Regulatory Techs <FarmingtonRegulatoryTechs@hilcorp.com>; Brice Clyde - (C) <Brice.Clyde@hilcorp.com>; Clay Padgett <cpadgett@hilcorp.com>; John LaMond <jlamond@hilcorp.com>; Lee Murphy <lmurphy@hilcorp.com>; Max Weaver <mweaver@hilcorp.com>; Rustin Mikeska <rmikeska@hilcorp.com>  
**Subject:** [EXTERNAL] CBL Submission & P&A Revision for Hilcorp's FOOTHILLS C 1B (API # 3004528974)



**This email has been received from outside of DOI - Use caution before clicking on links, opening attachments, or responding.**

Good morning Kenny and Monica,

Hilcorp is planning to move onto the FOOTHILLS C 1B for P&A later this morning (2/5/2024).

In advance of moving onto this well, please find attached a CBL that was run on 6/28/1993. The CBL shows cement up to ~323'.

Based on the results of the CBL, Hilcorp requests to proceed with pumping inside plugs only. We will then RIH w/ 1" polyline down the backside and top off cement to surface as needed.

In addition, I had a question regarding the COAs in attached approved NOI for this P&A.

- The BLM requested that Plug #1 and Plug #2 are combined in order to cover the Ojo Alamo Formation.
  - Kenny, did the BLM mean to instead request the combination of Plug #2 and Plug #3? Plug #1 covers the Fruitland only. Combining Plug #2 and Plug #3 would cover from the Kirtland to Surface, and would include the Ojo Alamo in that coverage.
  - Do we have permission to Set Plug #1 by itself, and combine Plug #2 and Plug #3? This would cover from ~616' to surface.

Please let me know if you have any questions or concerns with this plan.

Thanks,

**John LaMond**

Operations Engineer – Technical Services

Hilcorp Energy Company

1111 Travis

Houston, TX 77002

346-237-2210 (Office)

832-754-9692 (Cell)

[jlamond@hilcorp.com](mailto:jlamond@hilcorp.com)

---

The information contained in this email message is confidential and may be legally privileged and is intended only for the use of the individual or entity named above. If you are not an intended recipient or if you have received this message in error, you are hereby notified that any dissemination, distribution, or copy of this email is strictly prohibited. If you have received this email in error, please immediately notify us by return email or telephone if the sender's phone number is listed above, then promptly and permanently delete this message.

While all reasonable care has been taken to avoid the transmission of viruses, it is the responsibility of the recipient to ensure that the onward transmission, opening, or use of this message and any attachments will not adversely affect its systems or data. No responsibility is accepted by the company in this regard and the recipient should carry out such virus and other checks as it considers appropriate.

---

**District I**  
1625 N. French Dr., Hobbs, NM 88240  
Phone:(575) 393-6161 Fax:(575) 393-0720  
**District II**  
811 S. First St., Artesia, NM 88210  
Phone:(575) 748-1283 Fax:(575) 748-9720  
**District III**  
1000 Rio Brazos Rd., Aztec, NM 87410  
Phone:(505) 334-6178 Fax:(505) 334-6170  
**District IV**  
1220 S. St Francis Dr., Santa Fe, NM 87505  
Phone:(505) 476-3470 Fax:(505) 476-3462

State of New Mexico  
Energy, Minerals and Natural Resources  
Oil Conservation Division  
1220 S. St Francis Dr.  
Santa Fe, NM 87505

CONDITIONS  
  
Action 312533

CONDITIONS

Operator: HILCORP ENERGY COMPANY 1111 Travis Street Houston, TX 77002	OGRID: 372171
	Action Number: 312533
	Action Type: [C-103] Sub. Plugging (C-103P)

CONDITIONS

Created By	Condition	Condition Date
mkuehling	well plugged 2/7/2024	3/4/2024